

From: [Kevin R. Eberle](#)
To: [Emmons, Karen](#)
Subject: RE: Tornado Pix
Date: Tuesday, May 31, 2016 3:04:11 PM

Also, here is the 1944 Sanborn map. Most of the neighborhood was plowed under for the Gadsden Green development, including that house with the three dormers. But the extreme SW corner was still there. (This is oriented with East to the top.) The edge of the map cuts off just west of Chestnut Street (Hagood Ave.), but you can see that there was a building with a side porch on the north side (left side of the map) at the extreme bottom right. That's the house that I think the street view was taken from.

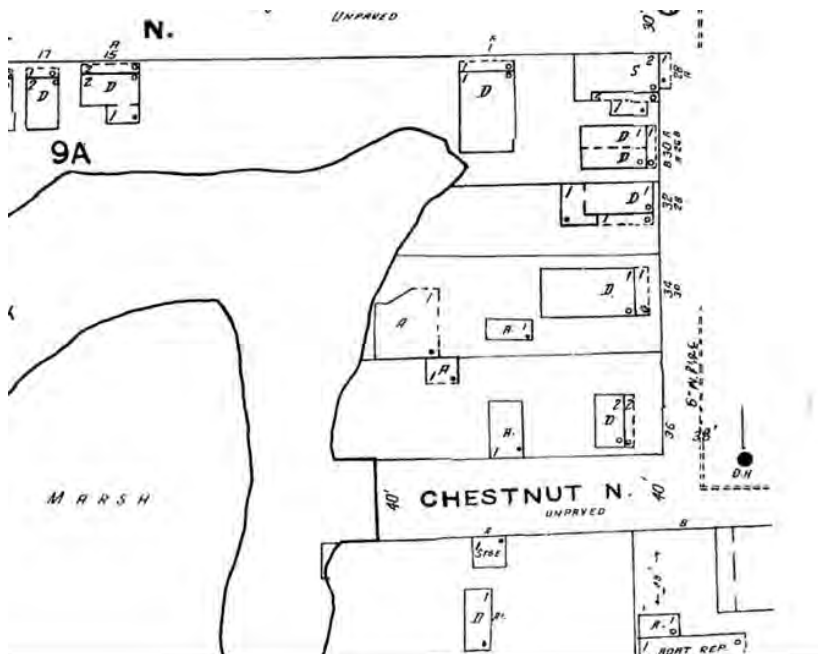
Then, you can see a house marked as 36 Ashton at the opposite corner. It's hard to say whether the house in the street view that had had its piazzas torn off is that same house or not. The photo looks like the main house might have been salvageable, so maybe they just rebuilt the piazzas? Or it might have been a totally new house after 1938.

Then, you can see a single-story house at 34 Ashton. That must be a new house after the tornado. I suspect that that lot is where the two-story house stood that was seen in a pile of debris in the street view.

Next door to that is 32 Ashton. That, I think, is the house that I marked in orange on the earlier photos. It is still standing today!

Next to that is 30 Ashton. That would be the second single-story house that you can barely make out in the streetview. In the photo, it looks like it lost its front porch.

And then there is 28 Ashton at the corner. It has a two-story side piazza on it and a weird one-story porch that sticks out over the sidewalk. That might be the two-story building that you can see in the background of the streetview. It also had those two-story side porches.





From: Emmons, Karen [mailto:kemmons@historiccharleston.org]
Sent: Tuesday, May 31, 2016 12:14 PM
To: Kevin R. Eberle
Subject: RE: Tornado Pix

No need to download any more. I'll just link the NWS site to the catalog records.

Karen Brickman Emmons
Archivist/Librarian
Historic Charleston Foundation
40 East Bay Street
Charleston, SC 29401
(843) 724-8490

From: Kevin R. Eberle [mailto:keberle@charlestonlaw.edu]
Sent: Tuesday, May 31, 2016 12:11 PM
To: Emmons, Karen
Subject: Tornado Pix

So, this is actually sort of interesting!

The woman with the Uptown photos actually got those pics of the tornado damage from another source. There is a set of images on the webpage of the National Weather Service, of all places! (<http://www.weather.gov/chs/1938CharlestonTornadoes>) That page includes note that reads: "The following photographs were sent to us on 14 February 2012 by John Lentz, Jr. They were taken by his father, John Harold Lentz, at the age of 19."

I've downloaded those, and I'm attaching them to this email.

And, in doing some close examination of them, I noticed a couple of things that are really helpful in pinpointing a location of a few of them!

I'm going to send a follow up email in a few minutes with some more thoughts.

Kevin

The information transmitted is intended only for the person or entity to which it is addressed and may contain confidential and/or legally privileged material. Any review, retransmission, dissemination or other use of this information, directly or indirectly, by persons or entities other than the intended recipient is prohibited. If you are not the intended recipient please contact the sender and delete the material from all computers in which it resides. Internet communications cannot be guaranteed to be secure or error-free as information could be intercepted, corrupted, lost, destroyed, arrive late, incomplete, or contain viruses. Therefore, we do not accept responsibility for any errors or omissions that are present in this message, or any attachment, that have arisen as a result of e-mail transmission. If verification is required, please request a hard-copy version or contact us by phone. Any views or opinions presented are solely those of the author and do not necessarily represent those of the Charleston School of Law.