

From: [Kevin R. Eberle](#)
To: [Kevin R. Eberle](#); [Emmons, Karen](#)
Subject: RE: Tornado pics
Date: Tuesday, May 31, 2016 3:55:49 PM
Attachments: [image002.png](#)
[image003.png](#)
[image004.png](#)

One correction. I reversed the location of Allway and Ashton in my mind. Everything below is correct (I think) except that where I wrote "Ashton," I should have said "Allway." Allway is the east-west street that runs one block north of Ashton.

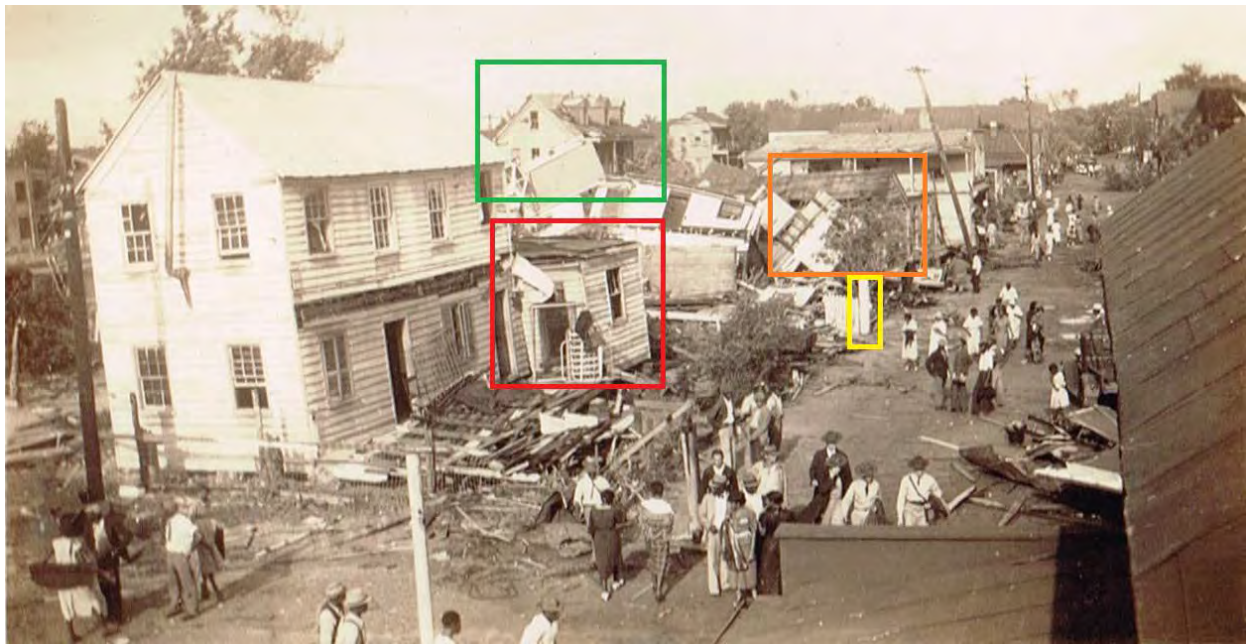
From: Kevin R. Eberle
Sent: Tuesday, May 31, 2016 1:37 PM
To: Emmons Karen
Subject: Tornado pics

And here is the REALLY remarkable coincidence.

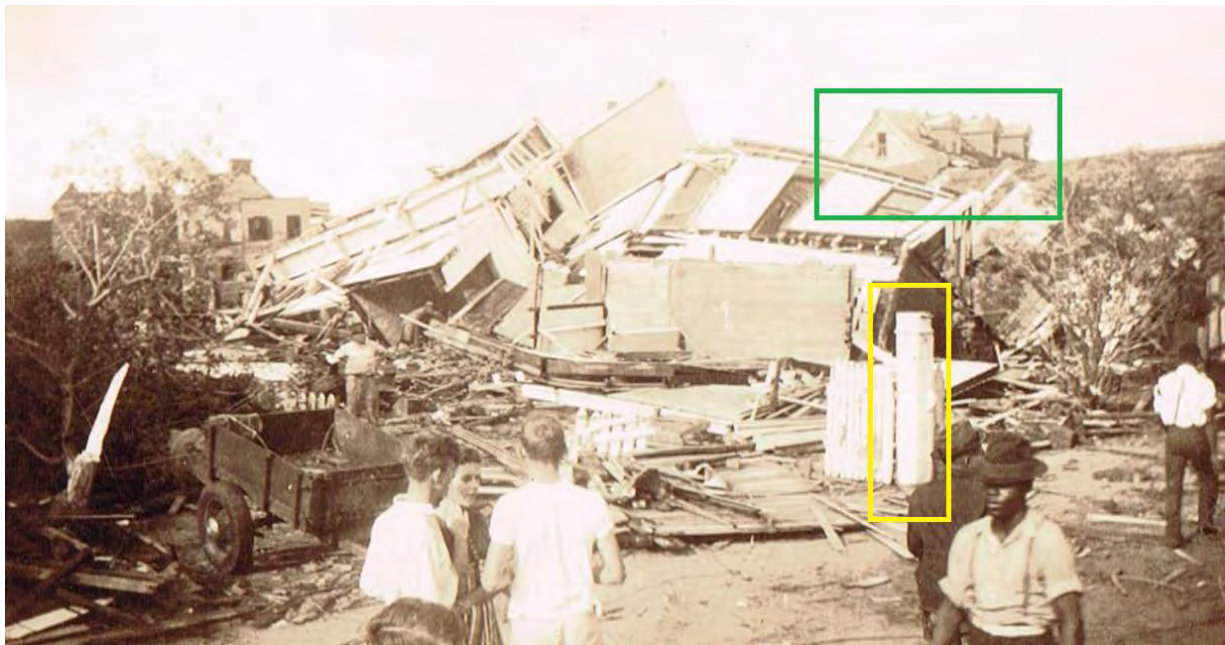
Here is one of the original photos that I dropped off a few weeks ago. The only hint about a location was the handwritten note about being in the Negro section near Hilly Street (prob. Lily Street). Not enough to work from . . . until now! I've marked four things on the photo that can be used as markers. The most notable is the two-story house with three dormers in the background (marked in green). It seems to be on a cross street a few doors down. Next, you can see a Charleston cottage (marked in orange) facing on the mystery street. Then, there is a white fence post also on the street (marked in yellow). And, last, there is some debris of a collapsed building in the foreground (marked in red).



Check out this photo from the Weather page! This shows the exact same image from a slightly different view! There is the fence post and all of the buildings!



Here is another of the images from the Weather photos. Because it was taken from a little further down the street, you can't see all four of the markers, but you can definitely identify two of them. It's the same view!



That last image was titled "President near Harmon Field," but I think that is wrong. Here's why.

Check out that second photo again. It was a picture taken from the second floor of some house. And, the house was at the end of the street that you see stretching out in the distance. So, it must have been at a T-intersection. The great detail is this: That second photo is titled as a shot of the Always store taken from the Elsey house. That's a great detail. If you check the city directories, there was an Elsey family that lived at 29 Chestnut Street. Chestnut Street later became Hagood Ave., and 29 Chestnut Street was just about four doors south of where the street deadended into the marsh.

One thing to note about the photo from the second floor of the house is that you can see the roof of the one-story piazza of the house on the left along the bottom of the shot. That is really odd because on the building across the street the piazza is facing the photographer. There are only a handful of houses in Charleston where the piazzas are on the "wrong" side of the house, but here is a case where the two piazzas are facing each other.

Now, take a look at this 1934 aerial photo from the Citadel archives. See that house marked in a blue? That is a house on Chestnut (now Hagood) smack at the end of Ashton Street. And, it seems to have an oddball single-story porch on the NORTH side, which is almost unheard of. And it is just about four doors south of where the street deadended into the marsh.

There is a two-story house across the street on the NE corner of Ashton and Chestnut Street, but it is unfortunately cloaked in trees. But, look at that house in

green! It is the only house in the entire neighborhood that has three dormer windows on its roof. And, it's location matches what would be expected from the other photos if shot from the intersection of Chestnut and Ashton.

And, you can see that there were two one-story houses, one of which is probably the same one shown above in orange. In the other shots above, the house that was destroyed in the tornado was clearly a two-story building. You can even see two doors, one-above-the-other, on the same wall in the wreckage. And, look at that! Next to the house seen below in the photo taken four years before the tornado, there was a two-story house!



The long and the short of this is that I think the street scenes show Ashton Street looking east.

Thoughts?

Kevin

The information transmitted is intended only for the person or entity to which it is addressed and may contain confidential and/or legally privileged material. Any review, retransmission, dissemination or other use of this information, directly or indirectly, by persons or entities other than the intended recipient is prohibited. If you are not the intended recipient please contact the sender and delete the material from all computers in which it resides. Internet communications cannot be guaranteed to be secure or error-free as information could be intercepted, corrupted, lost, destroyed, arrive late, incomplete, or contain viruses. Therefore, we do not accept responsibility for any errors or omissions that are present in this message, or any attachment, that have arisen as a result of e-mail transmission. If verification is required, please request a hard-copy version or contact us by phone. Any views or opinions presented are solely those of the author and do not necessarily represent those of the Charleston School of Law.