

NATIONALLY IMPORTANT BUILDINGS - Churches



✓ St. Michael's Church
Protestant Episcopal Church
Pre-Revolutionary Period, 1752-1760
Excellent condition



✓ St. Philip's Church
Protestant Episcopal Church
Ante-bellum period, 1835
Excellent condition



✓ First Baptist Church
First Baptist Congregation
Post-Revolutionary period, 1822
Good condition



✓ Chapel of the Orphan House,
City of Charleston
Post-Revolutionary, 1802
Good condition



42.15



88.16



40.22



42.10



2.7



40.1



43.11



6.21



33.4



38.11

THE METROPOLITAN PATTERN



46.5
Subdivision architecture



46.16 Government Housing 46.15



46.21 "Defense Housing" 46.7



47.12 Demountable Houses 47.5



47.11



47.2

Old Plantations



46.33



46.32

R.F.D.



46.17

Trailer camp



46.19

Workers cottages

CONTRASTS

After



Before



70 King Street



These were once like the above "Before"



50 and 54 Beaufain



east

Logan Street

west

COMMERCIAL AND INDUSTRIAL BUILDING



Warehouse



Bank



Office



Dwelling + Shop combinations



Merchants offices



Rice Mill



Apothecary shop



Rice Mill



313 King Street Clothing Store

BUILDINGS DESTROYED IN 1941



450 King St.



Horlbeck Alley



7-9-11 Beaufain St.



10 Charlotte St.



Buildings between Charlotte and Henrietta Streets, on Meeting, to
be demolished at the end of the war.

Existing and Possible Parks

White Point Gardens



"The Battery"

WASHINGTON SQUARE



"City Hall Park"

Colonial Common



"The Pond"



HAMPTON PARK



Wragg Square



Dedicated to the Use of
the People of
CHARLESTON, S.C.
in the Division of the
Estate of John Wragg
1801



Wragg Mall



St. Peters Cemetery



Westminster Cemetery



Quaker Graveyard



St. Andrews Hall Site

REHABILITATION OF OLD HOUSES IN HASSELL STREET



The Side Piazza



Piazza added to early house
69 Church St



89 Beaufain St



Piazza included in plan
89 Beaufain St



Piazza taken under roof



Victorian piazza



Colossal order



Use of piazza defeated



Loss of piazzas.

ALTERATION OF OLD HOUSES INTO MULTIPLE DWELLINGS



6 Montagu St.

60 Meeting St.



32 Pitt St

86 Anson St.

10 Meeting St.



1941

48 Pitt Street

Bull

New Buildings on Old Garden Sites



22 Thomas St.

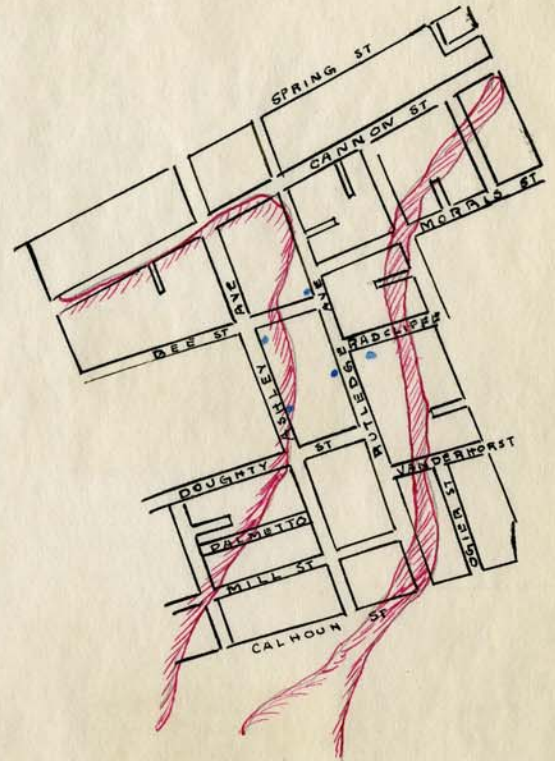
Meeting St

Cannonsboro

A low and marshy tract owned between 1762 and 1800 by Daniel Cannon, and house carpenter and mechanic, who owned lumber mills here. (Plt.Bk.CED p.80)

A plat made for the division of lots belonging to the heirs of Jonathan Lucas in 1753 shows a large part of this same area.

Dwellings 41
Churches 1



178 Ashley Ave



192 Ashley



173 Rutledge Avenue



172 Rutledge Ave



185 Rutledge Ave.

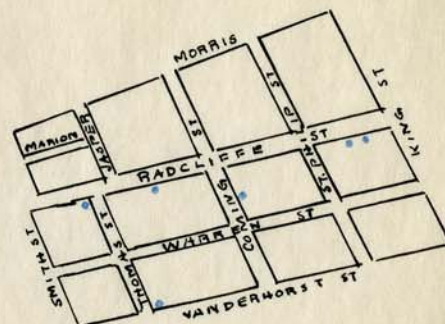
Radcliffeboro, and Elliott Lands

The former (lower section) was developed by Thomas Radcliffe, and surveyed by J. Purcell, 1786.

RMCO, McCrady Plats, Bk. 2, - .38

Elliott Lands on Charleston Neck were also surveyed J. Purcell in 1786.

Dwellings 26
churches 3



6 Thomas Street



47 Radcliffe Street



St. Paul's



57 Radcliffe Street

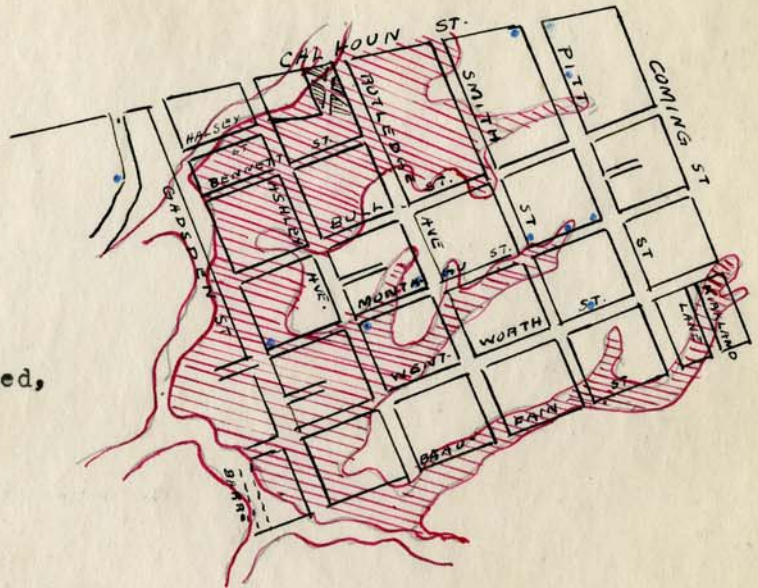


Radcliffe St.

Harleston

Part of the grant made to John Coming (whose widow was the donor of Glebe Lands) in 1685. After the death of John Coming and his wife, it was inherited by Mrs. Coming's nephews, the Harlestons, whose name the section bore when it was developed, and streets were opened up in 1770. The streets were patriotically named for famous men of the day.

Dwellings 103
churches 1



Bethel Church



20 Montagu



93 Ashley Ave.



1 Lucas Street



60 Montagu St.



56 Pitt Street
56



28 Montagu St



54 Smith



94 Rutledge Ave



92 Rutledge Ave



128 Wentworth St.

Free School Lands

Land given in 1710 by Act of Assembly
(A/a vol.11,389,342) for a Free
School, and later (D vol.IV,675)
1785, reserved for the use of
the College.

Dwellings 15

Public Bldg. 1



COLLEGE OF CHARLESTON



Library



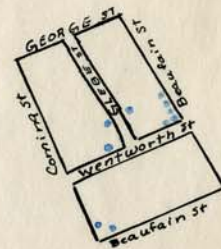
Main Building



Green Street

Glebe Lands

Seventeen acres given to the minister of the Church of England in Charles Town and his successors in office forever, by Mrs. Affra Coming, 1698. Land divided into 38 building lots in 1770; and into 14 more lots created, and Glebe Street cut through in 1797.



RMCO V7-5

Dwellings 26
Churches 2



Grace Church



6 Glebe St



Mt. Zion Church



86-88 Wentworth



17-19 St. Philip



10 Coming St



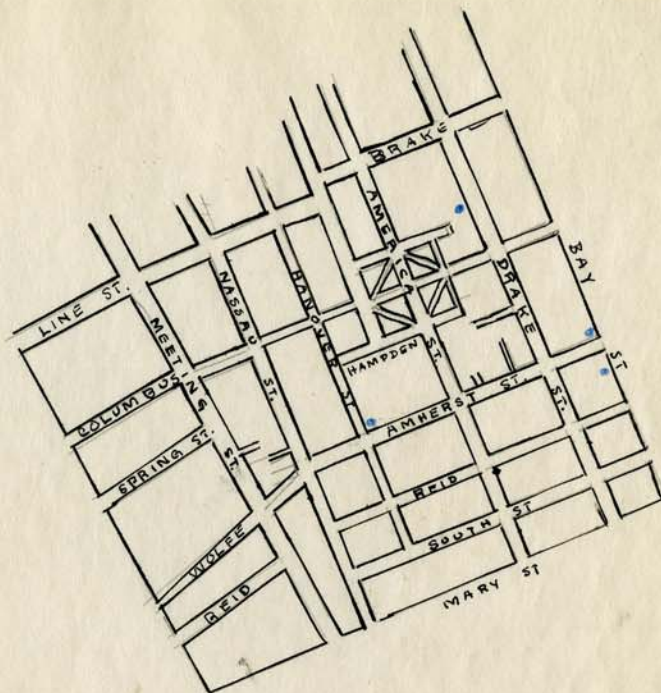
64 Beaufain St

Hampstead

Laid out for Henry Laurens
in 1789.

(RMCO Y10-45,
Plt.Bk,CEO p.8

Dwellings 18
churches 1



St. John's



2 Amherst St



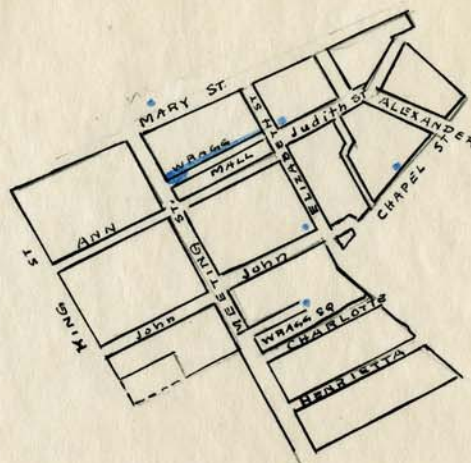
105 Drake St



Bay St

Wraggborough

Land that was a part of the extensive holdings of Joseph Wragg, partitioned between John Wragg and others in 1751. John Wragg received the 79 acres on the east of the "Broad Path" (King Street). A plat of 1806 shows it substantially as it exists today. The streets of Wraggboro were named with the Christian names of the Wragg children. The two parks were created in 1801.



RMCO B3-247, A7-415,
Plt.Bk, CEO p.24

Dwellings 19
Churches 2



4 John Street



Aiken Row, Wragg Mall



48 Elizabeth St.



34 Chapel St.



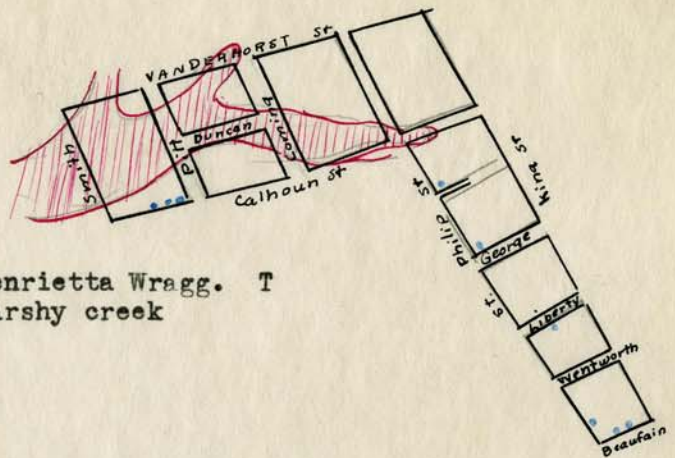
Mary Street



2nd Presbyterian Ch.

Wragg Lands and
Wragg Pasture Lands

Parts of the grant to Joseph Wragg, partitioned between his son John and others in 1751. The lower portion was the allotment of Henrietta Wragg. The upper was penetrated by a marshy creek that extended to Pitt Street.



RMCO B3-247

Dwellings 27
churches 3
Public Bldgs. 1



Old Bethel Church



56 St. Philip St.



58 George St.



214 Calhoun St.



6 St. Philip St.



220 Calhoun St.



9 Liberty St.



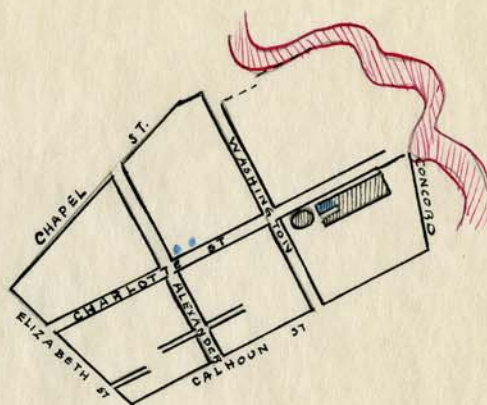
12-16 Boaufain

Mazyckborough

Land developed by Alexander Mazyck.
Surveyed, "at the request
of the proprietor", and
streets laid off by J.
Purcell, 1786.

RMCO L3-414
Plt.Bk. CEO p.144

Dwellings 17



20 Charlotte St



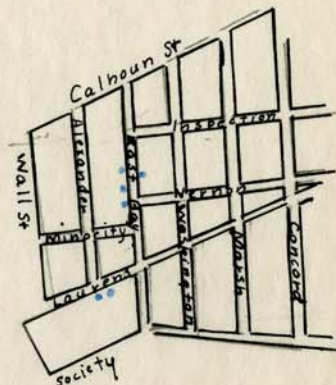
17 Charlotte St



Gas Works, Charlotte St.

Gen. Christopher Gadsden's Lands or
Middlesex

An original grant to Isaac Mazyck in 1720. After successive owners, 20 acres of high land and 20 acres of marsh were sold to Gadsden, who had them divided into six wharf lots and 197 back lots, built a brick market, and with Alexander Mazyck, his neighbor, provided a canal and landing. He named the streets for his political interests, but most of them have been changed.



RMCO I3-313,Q5-251
Plt.Bk. CEO,p.40

Dwellings 32
churches 1



55 Laurens St

Garvey



53 Laurens St.



Wall St.



833 E. Bay

*Thos
Wynn*



329 E. Bay

*Thos
Wynn*



321 E. Bay

*William
Blake*

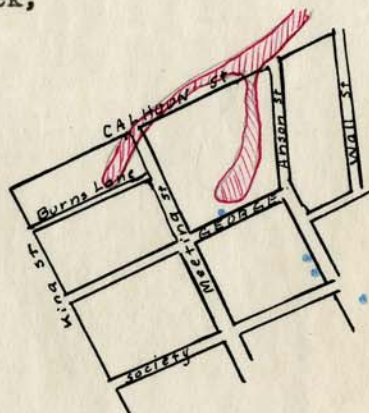


320 E. Bay

Pomero

Ansonborough

Land originally granted to Isaac Mazyck, which in 1746 became the possession of Capt. George Anson, Developed as Ansonborough after 1747. On a plat in Plat Book in City Engineer's Office, p.70, it is marked: "Part of a plantation in the Parish of St. Philip's, formerly known by the name of Bowling Green, belonging to George Anson, divided into 25 lots". The Streets of Ansonborough were named for the owner, and Squirrel, Centurion, and Scarborough for the ships in which he circumnavigated the globe.



Dwellings 49

Churches 3

Pub. Bldgs. 4



St. Stephen's Ch.



14 George St.



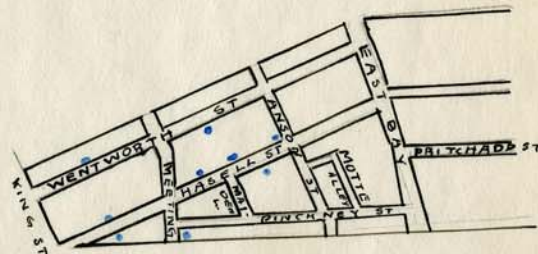
30 Anson St



71 Anson St.

Rhettisbury

Land granted to William Rhett in 1714 and known as Point Plantation of Rhettisbury. Divided by his great-grand-daughters, Susannah and Mary Hasell, whose marriages to Parker Quince and John Ancrum, were formerly commemorated in the streets of Rhettisbury.



RMCO LH6,491
McCrary Plats, Case 45

Dwellings 24

Churches 5

Pub. Bldgs. 2

#60

#54



37 Hasell St.



Charleston Hotel



Market Hall



St. Andrew's Church



St. Johannes Church



St. Mary's Church



Centenary Church



Beth El Shalom Synagogue

Mazyck Lands

Land granted to James Moore in 1698,
conveyed by trustees of his will, 1712
to Isaac Mazyck. In 1742 partitioned
between the four sons of
Isaac Mazyck and
others.

RMCO B3-460

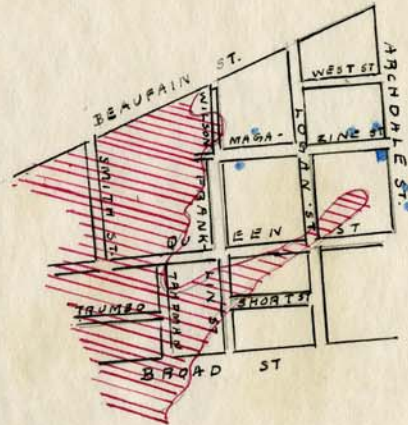
RMCO B3-486

Plat Book, City Engineer's
Office, p.58

Dwellings 24

Churches 4

Public Bldgs. 3



Magazine St.



21 Archdale St



19 Archdale St



The Gaol



St. John's Church



Unitarian Church

Small Houses

Victorian Period



50-52 King St.



3 Atlantic St



21 King St



Dock St. Theatre

Churches



First Baptist



St. Michael's



St. Philip's

Public Buildings



Court House



Exchange



S.C. Society Hall

Old and Historic Charleston

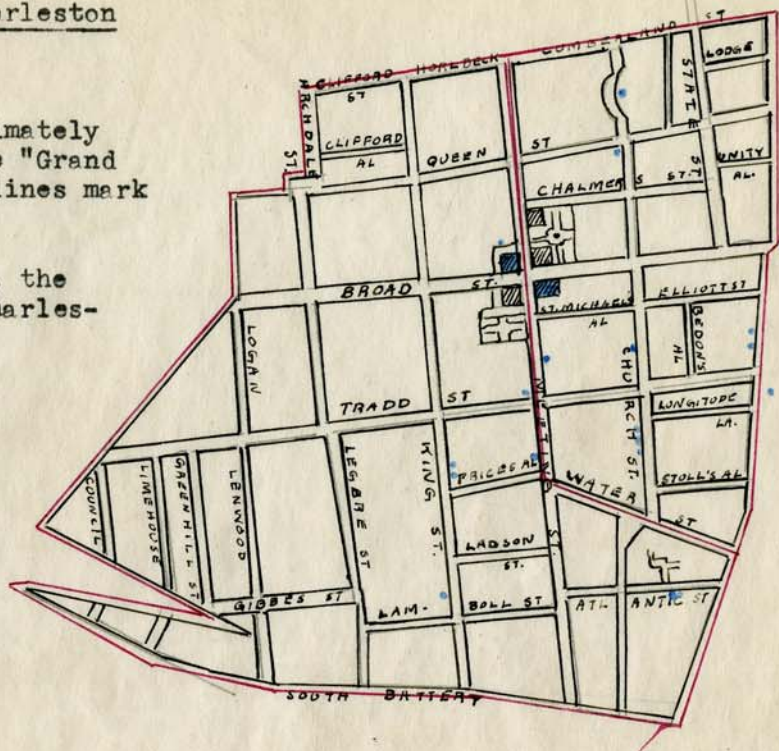
This area is approximately that included in the "Grand Modell". The inner lines mark the walls of 1704.

It is also, roughly, the "Old and Historic Charleston" of the Zoning Ordinance of 1931.

Dwellings 339

Churches 6

Pub. Bldgs 9



Pre-Revolutionary



Tradd St.



69 Church St



87 Church St



59 Meeting St

Post-Revolutionary



95 E. Bay



101 E. Bay



Vander Horst Bow, E. Bay



4-6 Court House Sq

NATIONALLY IMPORTANT BUILDINGS - Dwellings



✓ 8 South Battery, Pre-Revolutionary
Single Dwelling, privately owned, excellent condition



✓ 27 King Street, Pre-Revolutionary,
Single dwelling, shown as a museum, excellent condition



✓ 64 South Battery, Post-Revolutionary
Single dwelling, privately owned, excellent condition



✓ 51 Meeting Street, Post-Revolutionary
Single dwelling, privately owned, excellent condition

✓ 350 Meeting Street, Post-Revolutionary
Museum owned, USO operated, excellent condition

✓ Black
18 Bull Street

26.

NATIONALLY IMPORTANT BUILDINGS - Dwellings

✓ 54 Hasell Street, Pre-Revolutionary
Single dwelling, privately owned, excellent condition



✓ 71 Church Street, Pre-Revolutionary
Single dwelling, privately owned, excellent condition



✓ 59 Meeting Street, Pre-Revolutionary
Single dwelling, privately owned, excellent condition



✓ 69 Church Street, Pre-Revolutionary
Single dwelling, privately owned, excellent condition



✓ 14 Legare Street, Pre-Revolutionary
Single dwelling, privately owned, excellent condition



✓ 87 Church Street, Pre-Revolutionary
Owned and operated by the Charleston Museum, excellent condition



✓ 34 Meeting Street, Pre-Revolutionary
Single dwelling, privately owned, excellent condition



✓ 106 Tradd Street, Pre-Revolutionary
Single dwelling, privately owned, excellent condition

NATIONALLY IMPORTANT BUILDINGS - Public, Industrial



Court House

Charleston County, governmental use

Post-Revolutionary, after 1788

Good condition, recently enlarged, and interior altered

Attributed to William Dreyton



Exchange and Customs House

Daughters of the Revolutions, Museum and meeting place

Pre-Revolutionary, 1767-71

Fair condition

Peter and John Horlbeck



City Hall

City of Charleston, governmental use

Post Revolutionary, 1801

Good condition, interior considerably altered

Attributed to Gabriel Menigault



Fireproof Building

Charleston County, county offices and Historical Society

Post-Revolutionary, 1822

Fair condition

Robert Mills



College of Charleston, educational use

Post Revolutionary, and ante-bellum

Good condition

Strickland, (central portion, 1828), E.B. White, (portico and wings, 1846)



Marine Hospital

Housing Authority of City of Charleston, offices

Ante-Bellum

Good condition, restored, 1937

Robert Mills



South Carolina Society Hall

South Carolina Society, social uses

Post-Revolutionary

Excellent Condition

Gabriel Menigault, 1804, and Frederick Wesner (portico) 1825



Bennett's Rice Mill

Seaboard Air Line Railway

Ante-Bellum, 1844

Poor condition