



DOCUMENTATION OF A HISTORIC KITCHEN HOUSE AT

9 MARION STREET

CHARLESTON, SOUTH CAROLINA

05 MARCH, 2012



VICINITY MAP

NOTE: STRUCTURE IS DETERIORATED BEYOND REPAIR, AND HAS BEEN APPROVED FOR DEMOLITION BY THE BOARD OF ARCHITECTURAL REVIEW (8 FEBRUARY, 2012). THE FOLLOWING DOCUMENTATION IS INTENDED TO RECORD THE EXISTING AND HISTORIC CONDITIONS AT THIS PROTOTYPICAL EXAMPLE OF A SUBORDINATE KITCHEN STRUCTURE, SO FEW OF WHICH REMAIN.





VIEW FROM SOUTHWEST



FRONT HOUSE



SOUTH ELEVATION



WEST ELEVATION @ BATHROOM INFILL



NORTH/WEST ELEVATION



EAST ELEVATION

Julia F. Martin Architect LLC
210 Rutledge Avenue • 2nd Floor
Charleston, South Carolina 29403
www.juliamartinarchitect.com

t: 843.577.3275
f: 843.577.3277

DOCUMENTATION OF A KITCHEN HOUSE AT
9 MARION STREET
CHARLESTON, SOUTH CAROLINA

EXISTING EXTERIOR
CONDITIONS

05 MARCH, 2012

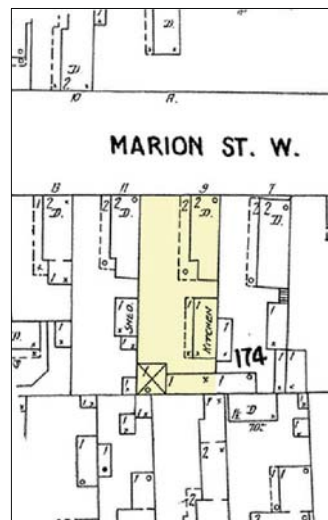
SANBORN MAP EXCERPT: 1888
PAGE 45

NOTE: PRESUME DEPENDENCY STRUCTURE
SHOWN TO HAVE BEEN DEMOLISHED/DESTROYED
AND SUBSEQUENTLY REPLACED.



SANBORN MAP EXCERPT: 1902
PAGE 17

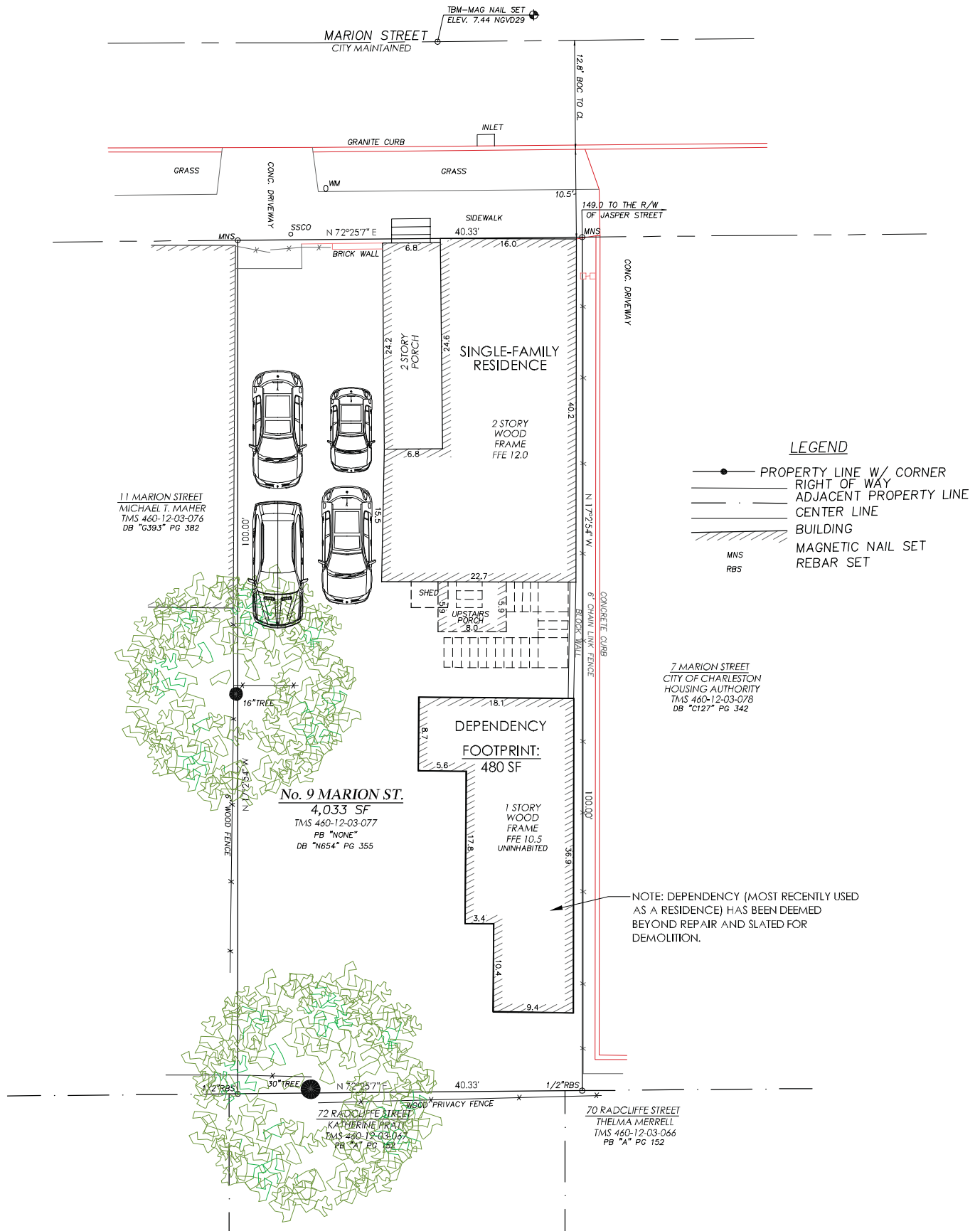
NOTE: PRESUME KITCHEN HOUSE STRUCTURE
SHOWN BUILT SUBSEQUENT TO 1888.

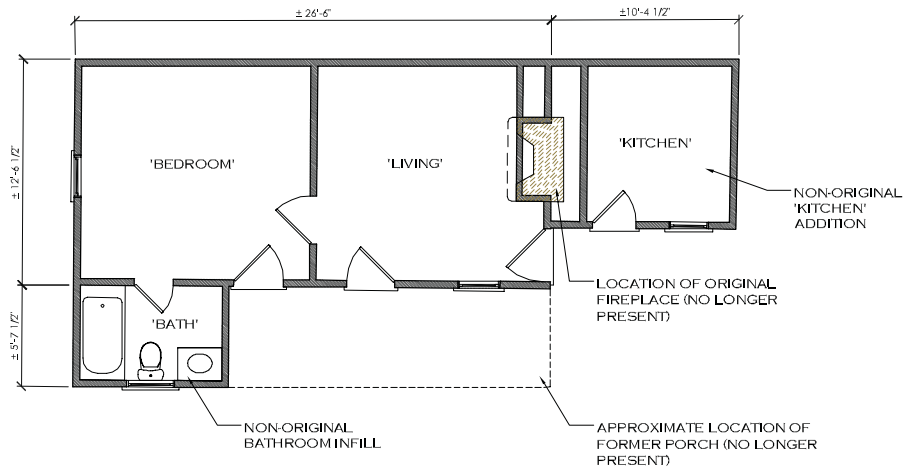


SANBORN MAP EXCERPT: 1944
PAGE 17

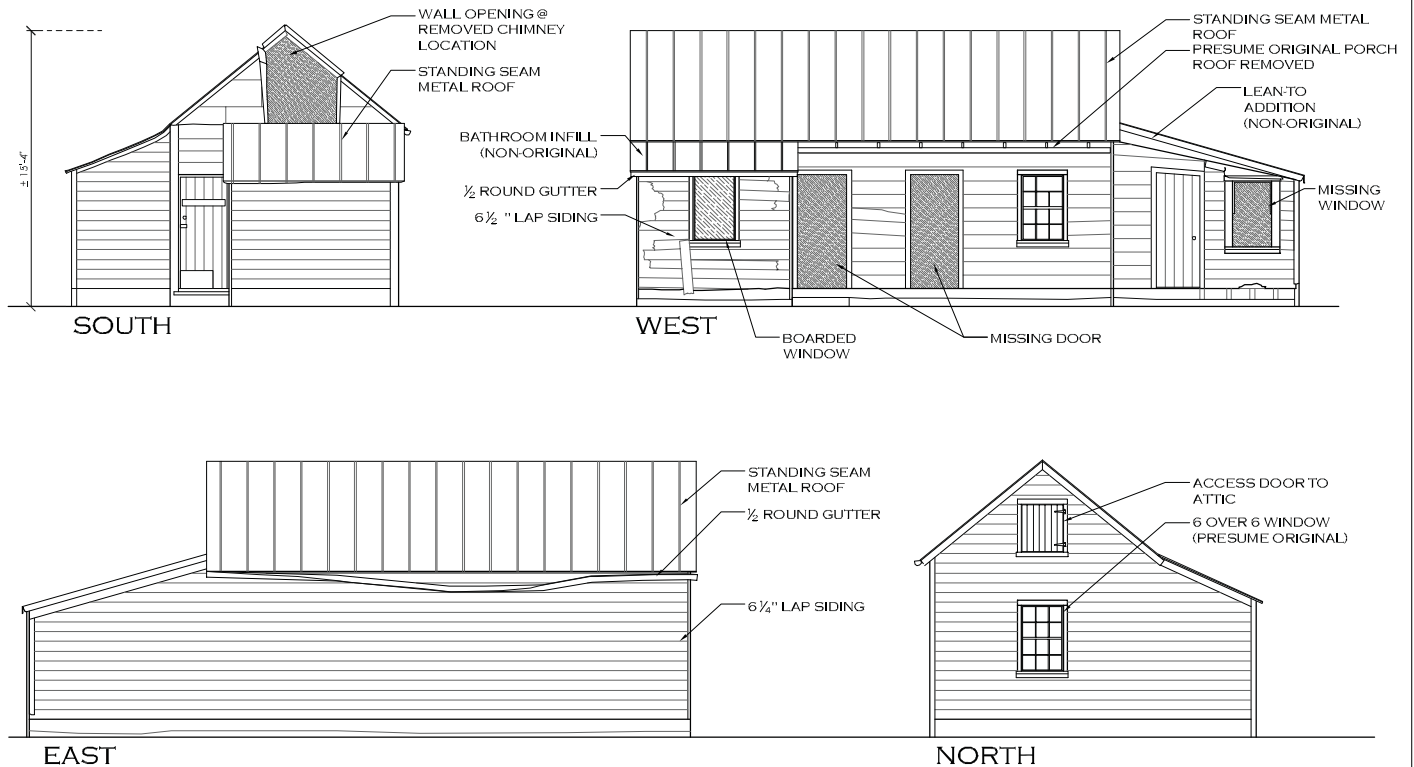
NOTE: NO CHANGES TO KITCHEN HOUSE
SINCE 1902.



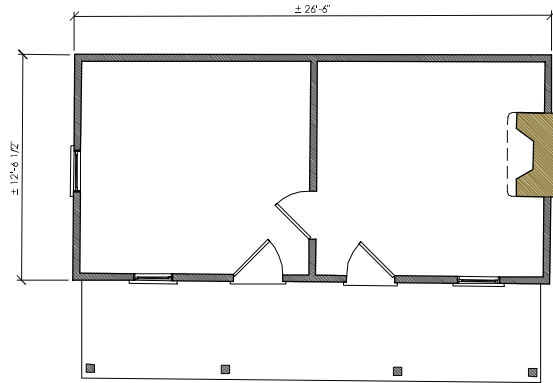




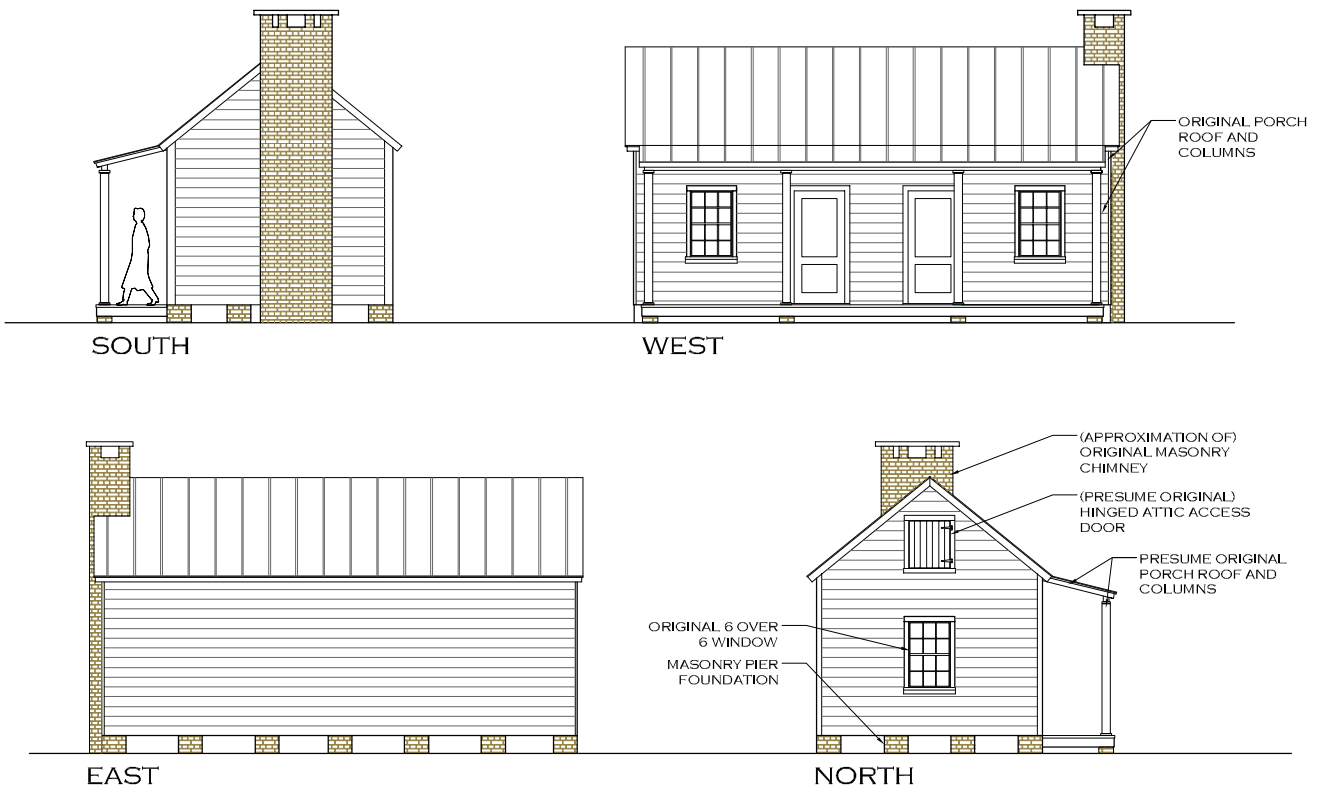
EXISTING PLAN/LAYOUT



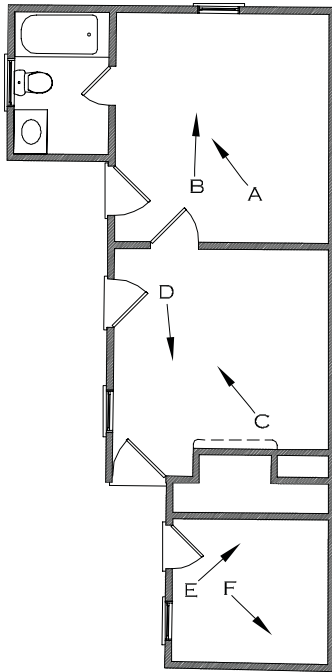
EXISTING EXTERIOR ELEVATIONS



ORIGINAL/HISTORIC PLAN (APPROXIMATION)



ORIGINAL/HISTORIC EXTERIOR ELEVATIONS (APPROXIMATIONS)



A



B



C



D



E



F

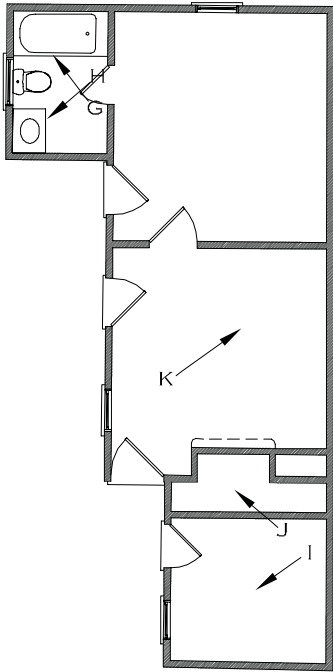


Julia F. Martin Architect LLC
210 Rutledge Avenue • 2nd Floor
Charleston, South Carolina 29403
t: 843.577.3275
f: 843.577.3277
www.juliamartinarchitect.com

DOCUMENTATION OF DEPENDENCY AT
9 MARION STREET
CHARLESTON, SOUTH CAROLINA

INTERIOR
PHOTOGRAPHS

05 MARCH, 2012



G



H



I



J



K



Julia F. Martin Architect LLC
210 Rutledge Avenue • 2nd Floor
Charleston, South Carolina 29403
t: 843.577.3275
f: 843.577.3277
www.juliamartinarchitect.com

DOCUMENTATION OF DEPENDENCY AT
9 MARION STREET
CHARLESTON, SOUTH CAROLINA

INTERIOR
PHOTOGRAPHS

05 MARCH, 2012