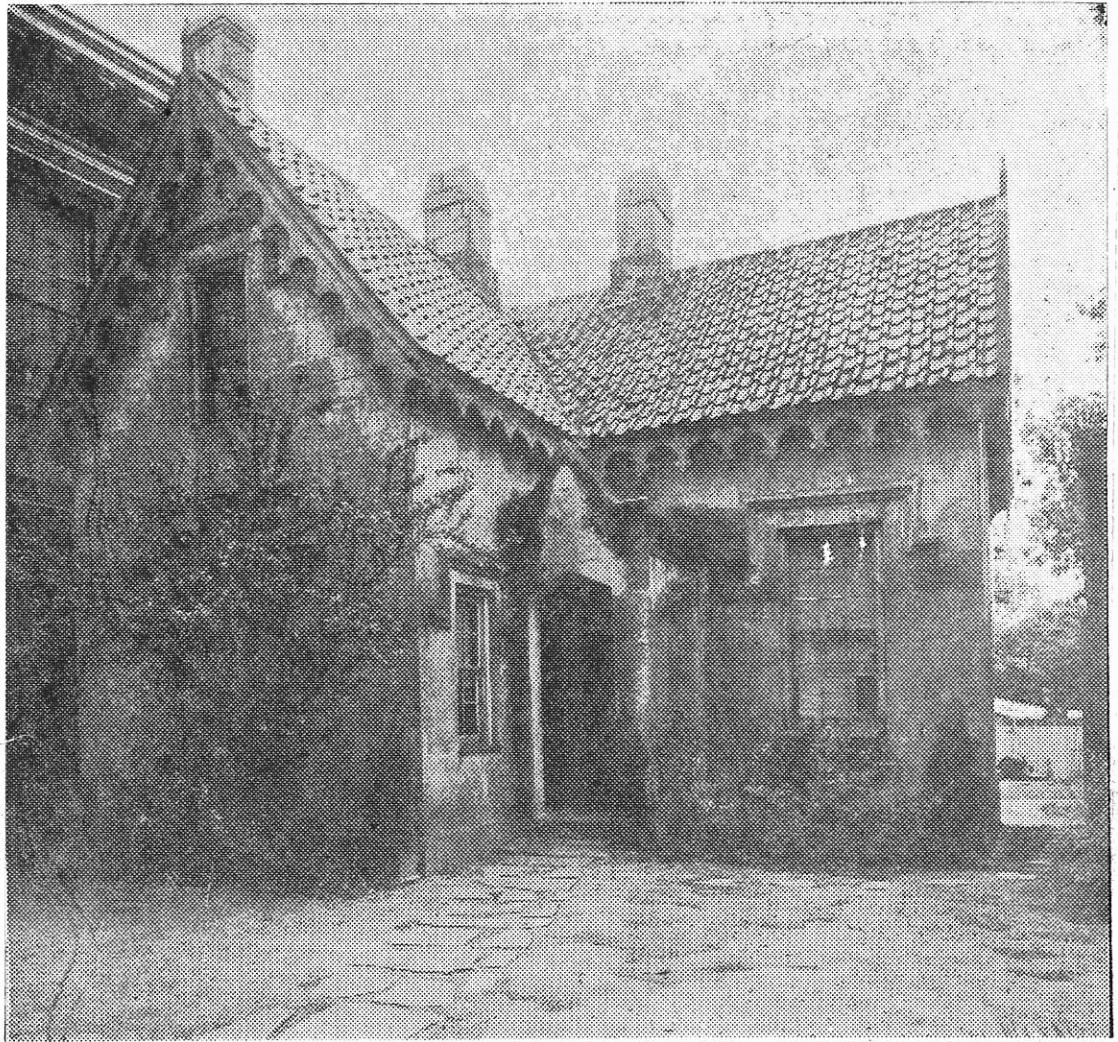


Do You Know Your Charleston?

"Queen Anne Cottage"

NTC 3/7/38



Quaint Building on Grounds at Memminger, Once Kitchen of Pinckney Home, Landmark to Schoolgirls

News + Courier

3-7-38

Known as the Queen Anne cottage, a small building on the campus of the Memminger high school has been a familiar landmark to generations of school girls, though scarcely noticed by the casual passerby in St. Philip street.

This building, now nestled between two massive school buildings, originally was the kitchen of the Henry L. Pinckney dwelling which occupied the lot prior to its purchase in 1858 for erection of the Normal school, as it was called at first.

When the school was built, the little brick lodge was the only building on the premises left intact, and it was occupied by the Irish gardener, who had been employed immediately after the purchase of the estate.

It remained the janitor's lodge until three years ago. At that time interest was awakened in the preservation of the building. The student council, under the guidance of Miss Edna Parham, faculty adviser,

arranged one of the rooms as a meeting room. The grounds about the cottage were transformed into a garden.

The June graduating class of 1935 left a gift to be used on its restoration.

Several suggestions have been made for permanent use of the cottage. Among these are a meeting place for various organizations participating in extra-curricula activities or a model home for practical demonstration classes in the home economics department.

The picture shown above was taken a few days after the gardening was begun. The flag-stones just had been laid and the shrubbery planted. The present beauty spot about Queen Anne cottage is the result of the cooperative efforts of the Parent-Teacher association of the school and the student council building and grounds committee. The P.-T. A. made the first contribution toward the gardening project.