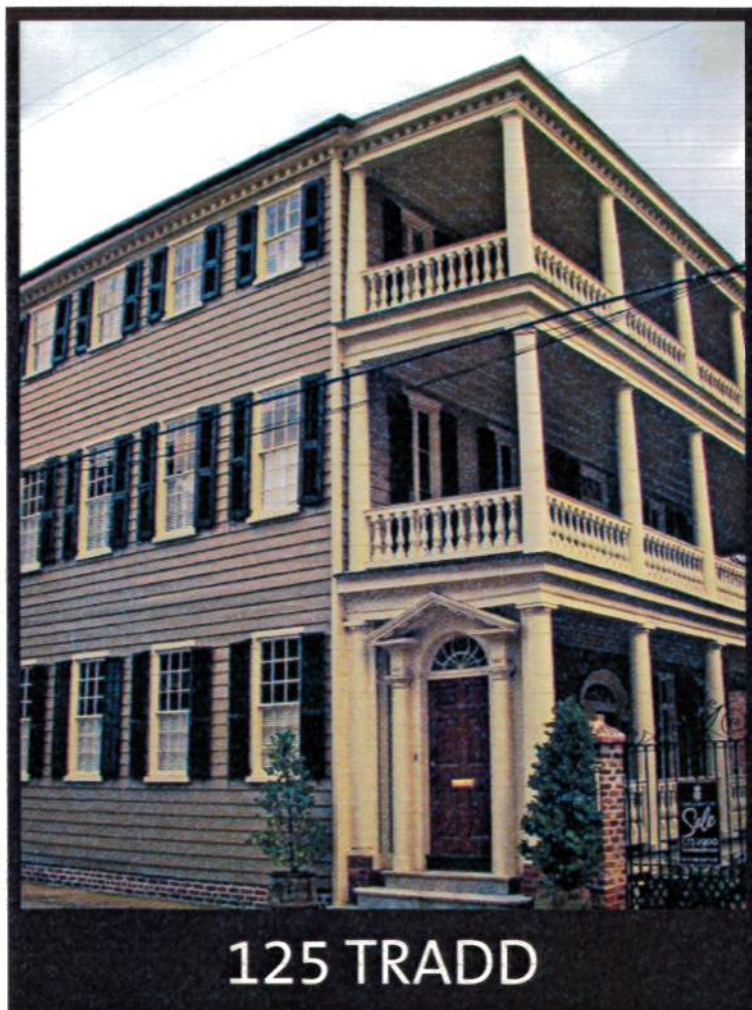




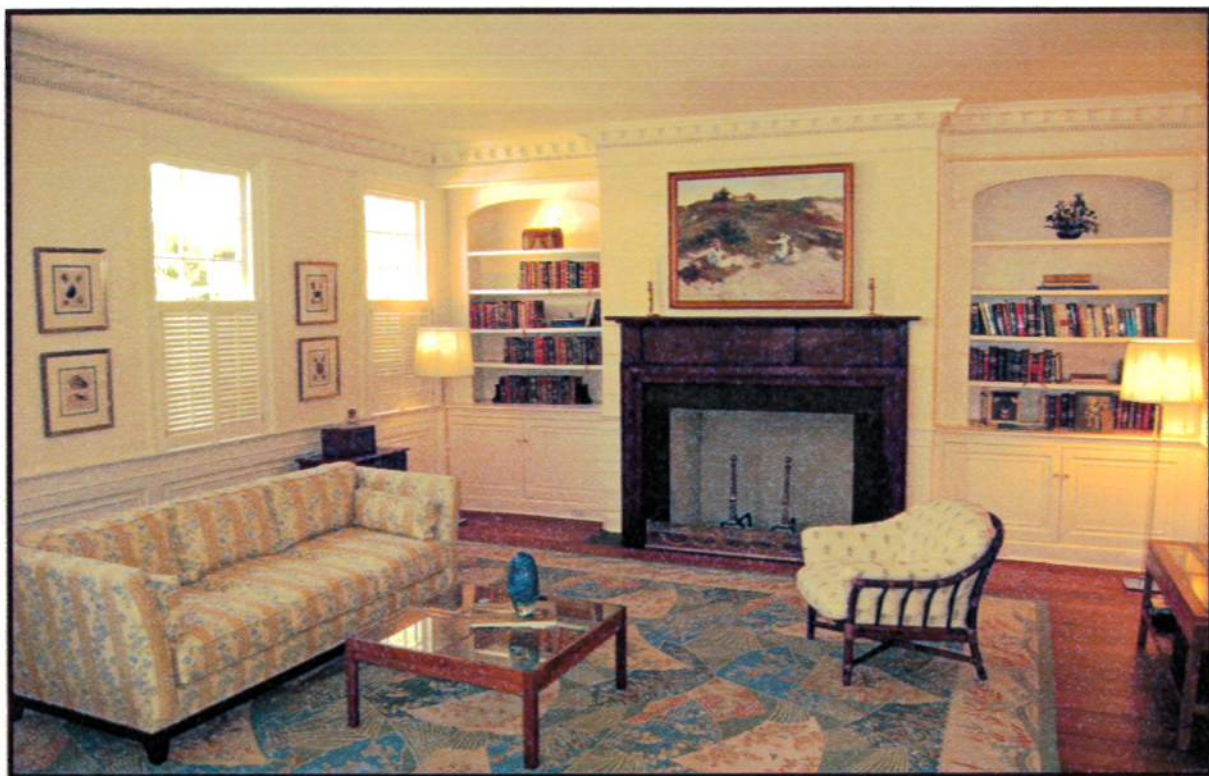
LANE & SMYTHE REAL ESTATE BROKERS



125 TRADD

\$4,200,000

listing agent, Ruthie Smythe





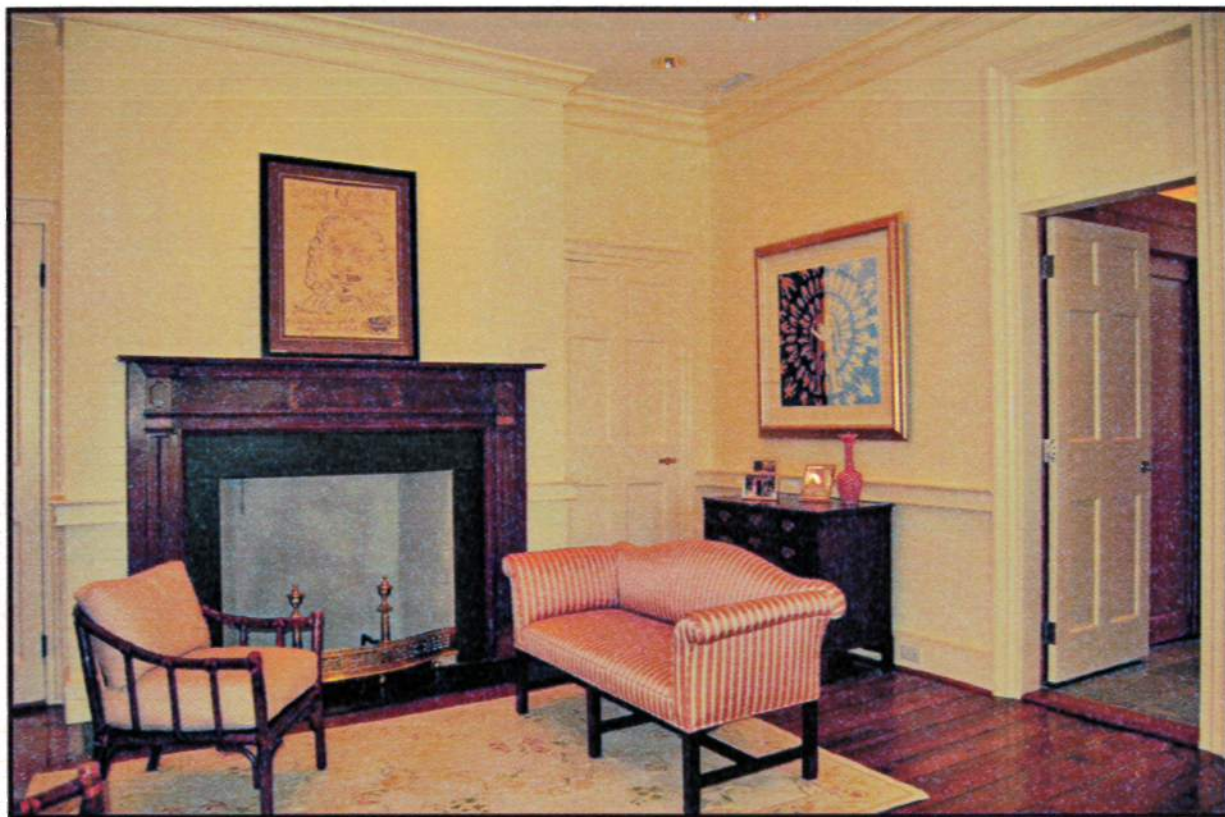
Tax Map #: 457-11-04-099
2007 Taxes: \$12,193 (4%)
Approximate Square Footage: 5400
Lot Size: 50 x 208
Approximate Year Built: 1807

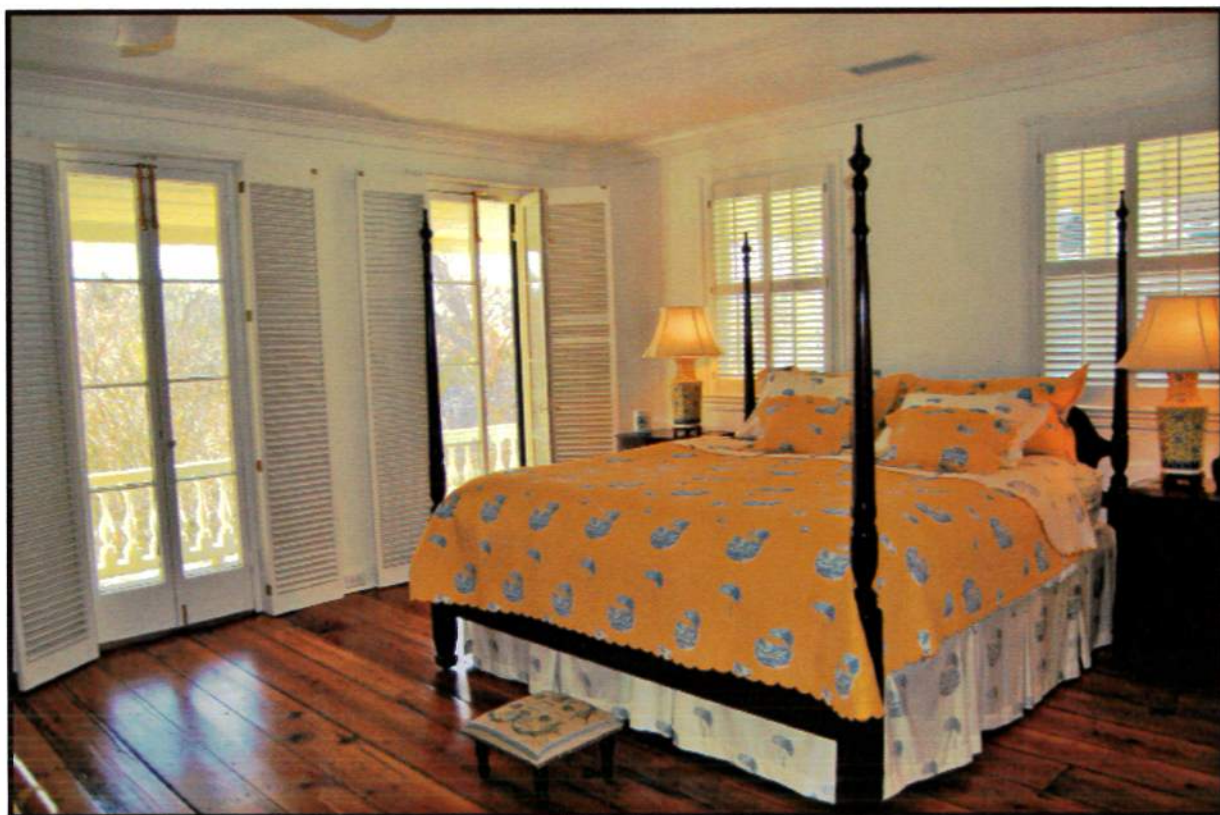
125 tradd

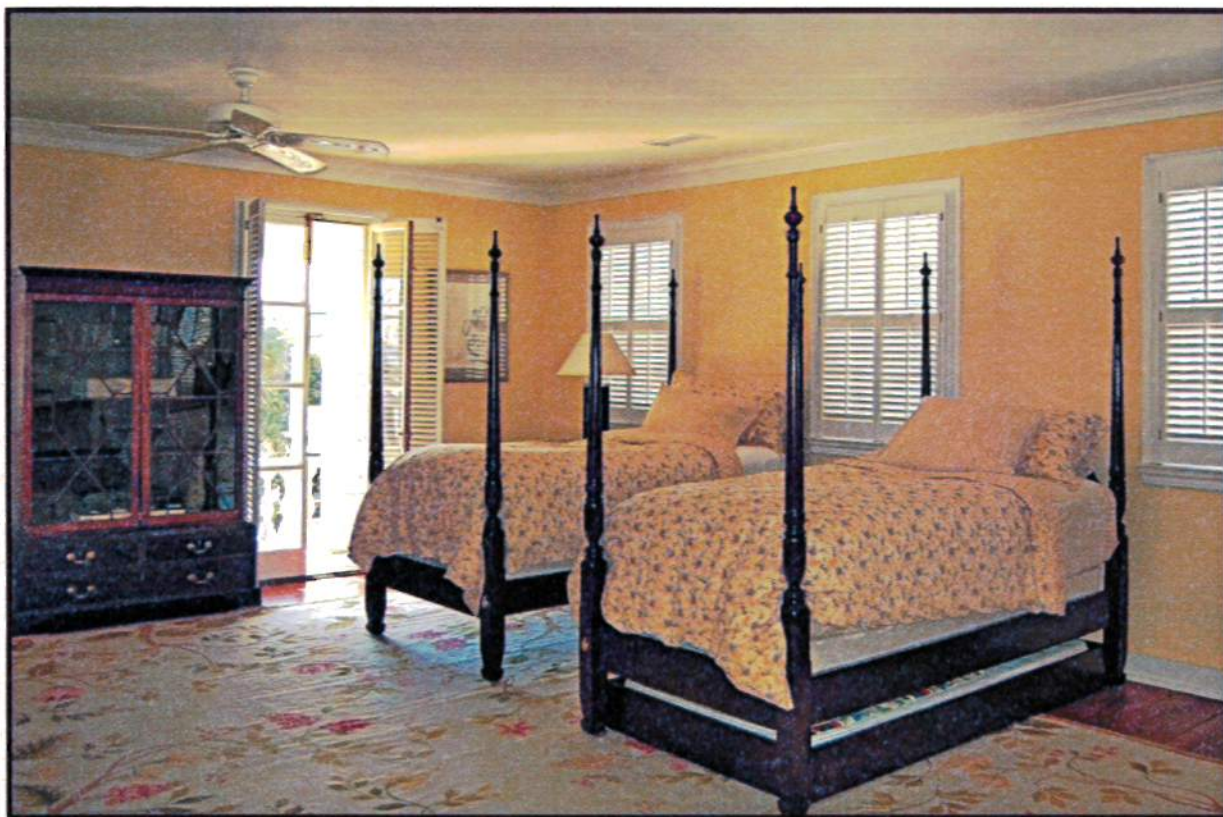
The Captain John Morrison House, circa 1807, is regarded as one of Charleston's most distinctive single houses. Its wide street frontage explains the exceptional depth of its stair hall and flanking rooms. As customary in the Federal style the house retains its nine over nine windows on the first two floors and the smaller six over six windows on the third floor. It is noted for its handsome four bay facade facing Tradd Street and the expansive three tiered piazzas which were added in the 1840's. Great care has been taken to restore period moldings, hardware and replacement of new glass with old glass. A thoughtful renovation by Harper James Finucan, one of Charleston's top restoration contractors, has incorporated the grand 18th century architecture with the demands and expectations of the 21st century. All fireplaces have been relined for wood burning fires, and an elegant kitchen and baths have been added. The main house has four bedrooms, three and two half baths. The garden house contains another full bath. The house is protected by a facade easement with Historic Charleston.



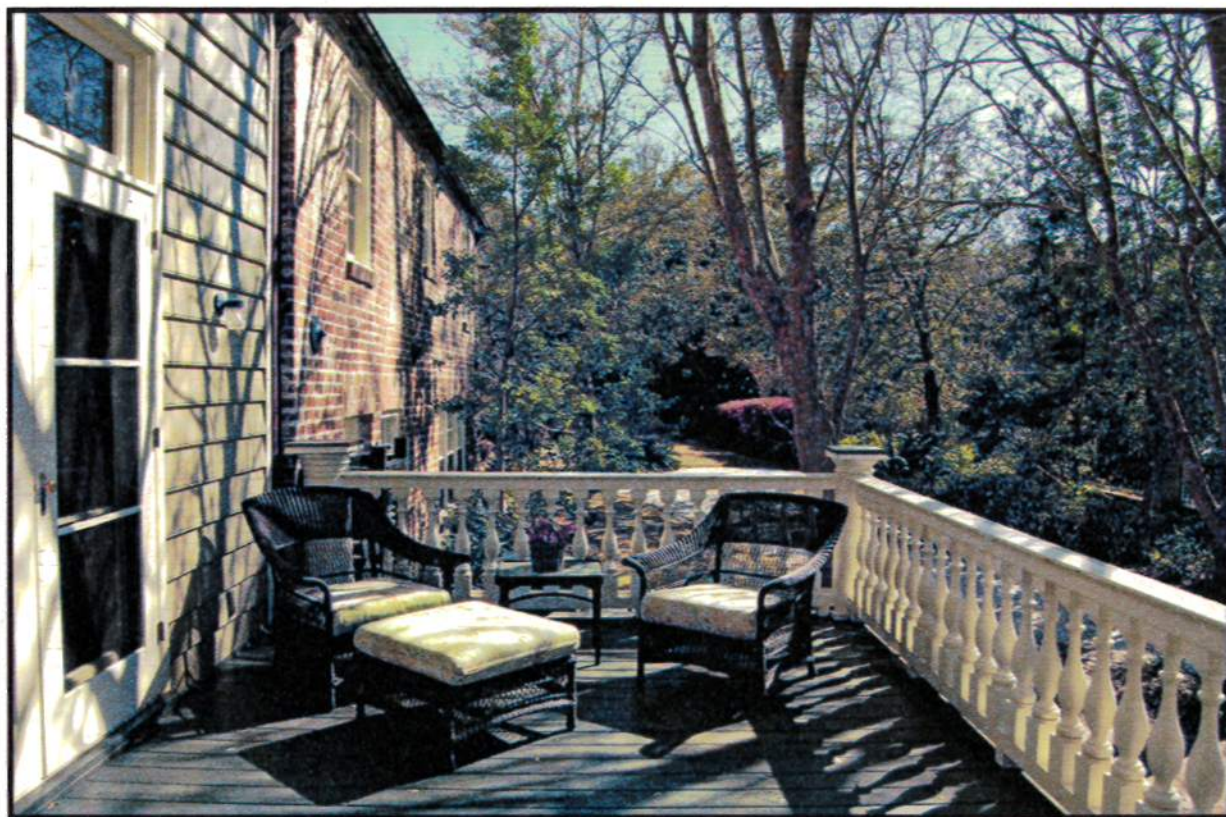




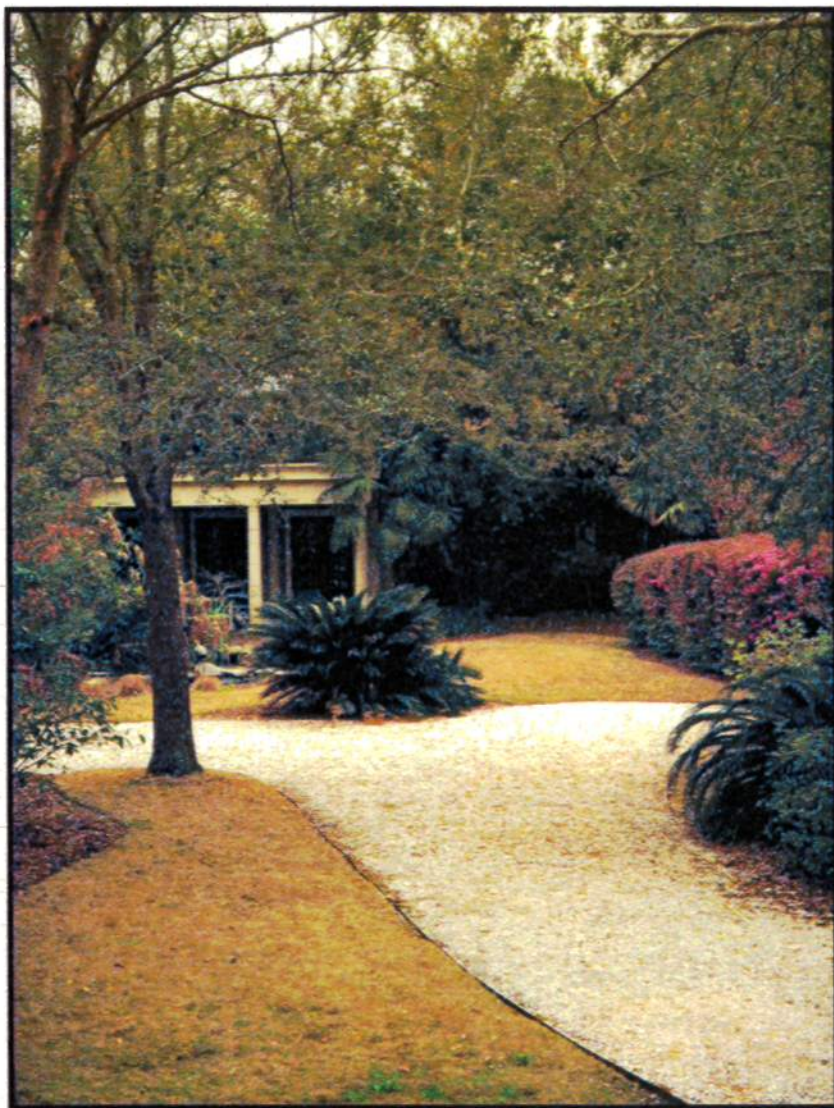










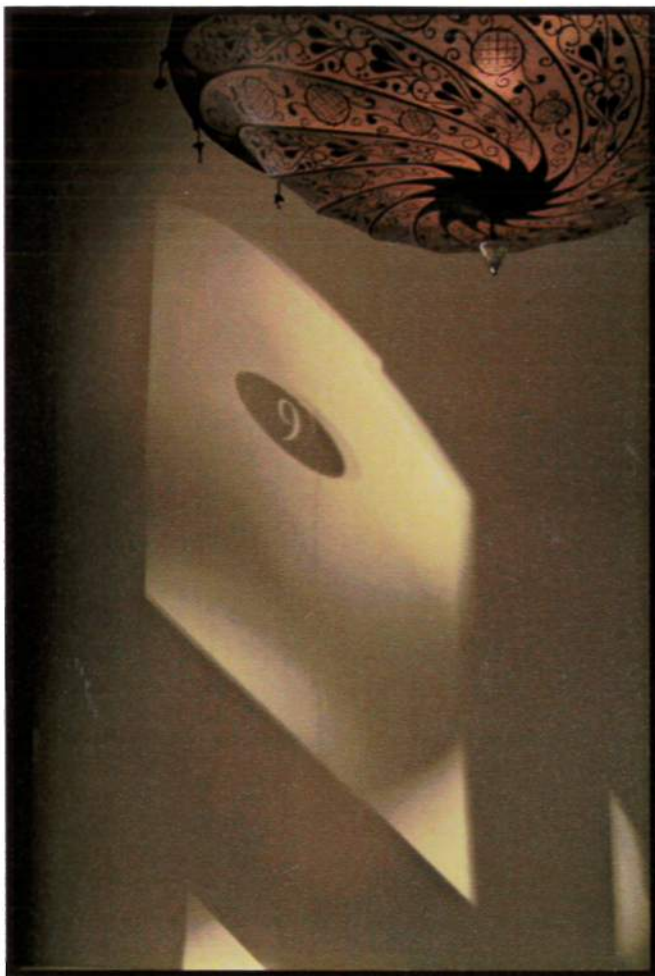




SOUTH OF BROAD

CHARLESTON · SOUTH CAROLINA

Map not to scale - for illustrative purposes only. © 2004 JF Designs



Located on Charleston's premier business street, Nine Broad was built in the early 1850s as a cotton exchange office, designed by Edward Brickell White. In 1918, Preservationist Susan Pringle Frost, Charleston's first real estate broker, opened her office on Nine Broad Street. Three quarters of a century later, our firm, Lane & Smythe Real Estate, has continued her legacy, undertaking the restoration of Miss Frost's real estate office to its original architectural design.

For over twenty years we have been Charleston's leading real estate brokers, specializing in properties located in historic Charleston. We offer our clients the personal attention they deserve through our years of professional expertise, prominent advertising, and repeat business and referrals. Lane & Smythe successfully brings qualified buyers and sellers together... for those who call Charleston home.

The information herein is furnished to the best of our knowledge, but is subject to verification by purchaser, and agent assumes no responsibility for correctness thereof, nor warrants or guarantees the accuracy of the information or the condition of the property. This property is offered without respect to race, color, creed or national origin.