

Insurance Maps of Charleston, South Carolina, Vol. I, a/k/a Sanborn Maps

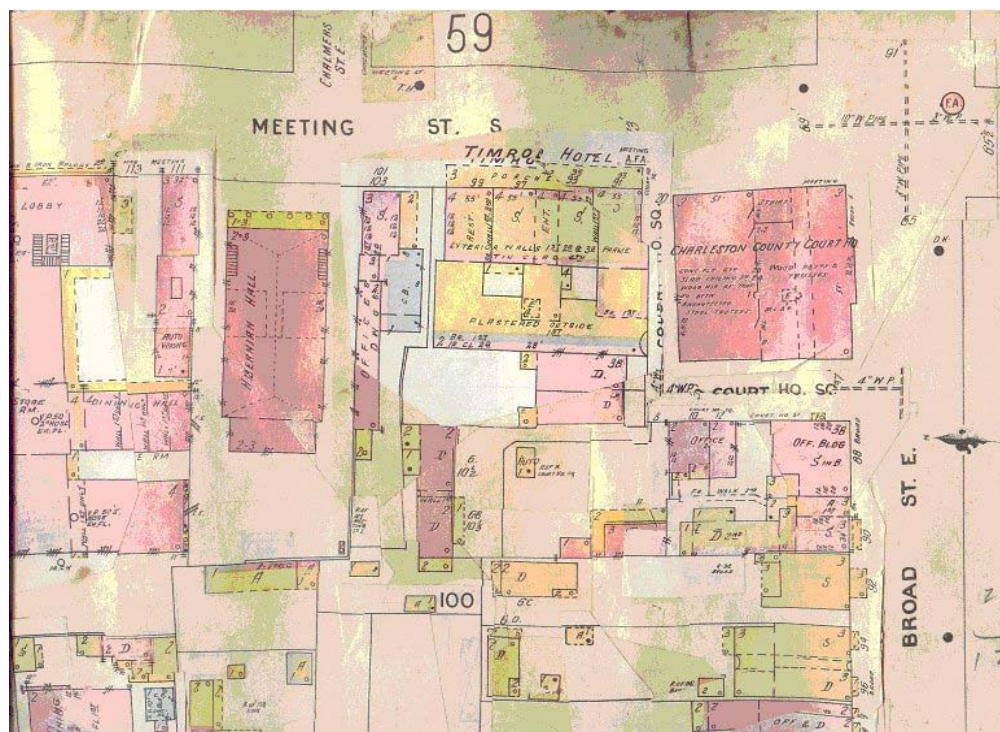
Insurance Maps of Charleston, South Carolina, Vol. I

Publisher: Sanborn Map Co., Pelham, NY, 1902 (with updates through 1953)

DESCRIPTION

Insurance Maps of Charleston, South Carolina (a/k/a Sanborn Maps) are a series of large-scale detailed maps of Charleston that depict the city's commercial, industrial, and residential sections. This volume was published in 1902, with updates, corrections, and addenda through 1953. The maps illustrate the site, size, shape, construction, and building material of dwellings, commercial and public buildings, and factories. Building details include firewalls, location and number of windows and doors, style and composition of roofs, wall thickness, cracks in exterior walls, and numbers of stories. The maps are colored-keyed to identify a building's material composition. The maps also indicate building use; sidewalk and street widths; street layout and names; property boundaries; distance between buildings; house and block numbers; and location of water mains, hydrants, piping, wells, cisterns, and fuel storage tanks. Many buildings are labeled by name, so one can determine where the post office, city hall, dry goods stores, bakeries, etc., were located. Corrections, addenda, and updates have been pasted over original maps; often the original maps underneath are visible when held up to light, allowing the researcher to see changes over time. See Notes for details of addenda, indexes, etc.

Refer to the accompanying booklet, "Description and Utilization of the Sanborn Map," in Drawer 1, for instructions on how to read the maps and for key to symbols.



DRAWER/FOLDER INDEX TO SANBORN MAPS

ALL SANBORN MAPS ARE LOCATED IN MAP CABINET #3

DRAWER 1

- FOLDER 1 **Description and Utilization of the Sanborn Map* (instruction booklet)
- *Indexes (photocopies):
- index 1: Addenda (Feb. 1941) to Additional Index of Feb. 1939; Additional Index, Feb. 1951; Addenda, Dec. 1953, to Additional Index Feb. 1951
- index 2: New Index, March, 1942
- index 3: Additional Indexes: May, 1934, and Feb. 1939
- FOLDER 2 *Title page - page. i
- New Report, Sept. 1952 (providing demographic and municipal data)
- New Index, March, 1942
- *Pgs. ii-iii:
- Indexes (see above)
- Map of peninsula designating ward numbers and ward boundaries
- FOLDER 3 *Pg. iv:
- Key Map (of peninsula)
- Key to Symbols
- Correction Record with entries from 1942 to 1953
- *Map, pages 1-3
- FOLDER 4 *Maps, pages 4-7

DRAWER 2

- FOLDER 5 *Maps, pages 8-11
- FOLDER 6 *Maps, pages 12-15
- FOLDER 7 *Maps, pages 16-19
- FOLDER 8 *Maps, pages 20-23
- FOLDER 9 *Maps, pages 24-27

DRAWER 3

- FOLDER 10 *Maps, pages 28-31
- FOLDER 11 *Maps, pages 32-35
- FOLDER 12 *Maps, pages 36-39
- FOLDER 13 *Maps, pages 40-43
- FOLDER 14 *Maps, pages 44-45 (also includes skeletons* of p. 43 & 44)

*Note: There are several duplicate ("skeleton") maps containing only the outline of property boundaries and buildings.

DRAWER 4

- FOLDER 15 *Maps, pages 46-49
- FOLDER 16 *Maps, pages 50-53
- FOLDER 17 *Maps, pages 54-56 (also includes skeleton of p. 55)
- FOLDER 18 *Maps, pages 57-58 (also includes skeletons of pp. 56 & 57)
- FOLDER 19 *Maps, pages 59-60 (also includes skeletons of pp. 58 & 59)

DRAWER 5

- FOLDER 20 *Maps, pages 61-63 (also includes skeleton of p. 60)
- FOLDER 21 *Maps, pages 64-67
- FOLDER 22 *Maps, pages 68-71
- FOLDER 23 *Maps, pages 72-75
- FOLDER 24 *Maps, pages 76-79

NOTES

Updates and addenda include:

- Inside front cover: Updates/addenda to indexes (pasted in inside front cover) as follows:
 - Addenda Feb. 1941 to additional index of Feb. 1939
 - Additional index, Feb. 1951
 - Addenda Dec. 1953 to additional index of Feb. 1951

Also pasted inside front cover, this notice: "Feb. 1941 correction includes additional territory formerly unmapped, now appearing on sheets 84, 85, and 106."

- p. [i]: New Report, Sept. 1952, providing demographic and municipal data, and New Index, March, 1942.
- p. [ii]: Additional Indexes: May, 1934, and Feb. 1939 (pasted over Oct. 1935 addenda to May 1934 and Additional Index, Feb. 1938)
- p. [iii]: Map of peninsula taped to page, designating ward numbers and boundaries, with note from J.W.D. Zerbst, County Auditor, who presumably added this map into the volume.
- p. [iv]: Key map of peninsula; key to symbols (see also booklet); correction record with entries from 1942 to 1953.

In 2007, maps were removed from the binding/cover, placed in protective sleeves, and filed in a map cabinet obtained with a Preservation Access Grant awarded by the National Endowment of the Humanities.

MATERIALS IN OTHER REPOSITORIES

Some volumes have been digitized and are available online via both Charleston County Public Library and University of South Carolina.

Available on microfilm at College of Charleston, Charleston County Public Library, and SC Historical Society.

Some institutions (C of C Special Collections, SC Historical Society) have physical volumes in their collections (access may be limited).