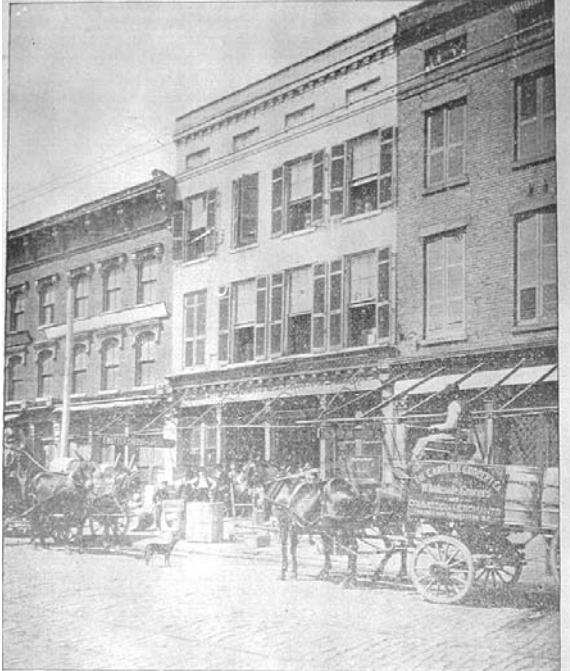




East Bay Street (foreground). Identified as looking down Lodge Alley to State Street, ca. 1900s.



Identified as looking down Lodge Alley to State Street, ca. 1900.



~193-197 East Bay Street, site of “Lodge Alley Project”
(don’t have photo; this is from a publication)



Anderson’s Battery marching on East Bay Street, ~199
East Bay Street, ca. 1900s.



West side of East Bay Street across from Custom House, ca. 1900s.