

Constructed between 1740-1770, the George Pawley House at 1019 Front Street in Georgetown, South Carolina stands today as one of the most prominent houses in the city. It is the only extant masonry structure in Georgetown from the eighteenth century. Situated on a bluff overlooking the Sampit River, the George Pawley House is renowned for its water views, regional architectural, superiority of construction, and historical figure associations.

Constructed originally in the Georgian style by Robert Stewart, the son of one of the original settlers of South Carolina, the house has over the years had multiple developments which showcase changing architectural styles These include stuccoing of the brickwork and the addition of Adamesque elements. The Adamesque additions of circular wings and interior decorative molding are estimated to have been added in the early nineteenth century.

Facing the Sampit River and the historical main road, the home is known as the house with two fronts and, more notably, the house where George Washington slept. In 1791, while the home was under the ownership of Daniel Tucker, George Washington toured Georgetown. Washington was escorted to the George Pawley House by local militia and a reception committee. He was offered tea and overnight accommodations. A journal entry from Washington mentions this event stating “Crossing the Waggamaw to George town... I dined with citizens in public in the afternoon and was introduced to upwards of 50 ladies who has assembled (at a tea party) on the occasion.”

With the death of homeowner Joseph P. Wyatt in 1910, the George Pawley House passed into the hands of his daughter Penelope Parker. The house remained in the Parker family until 1976 when ownership was assumed by First Federal Savings Loan Association of Georgetown in an effort to continue preservation work done by the Parkers. The house was leased by the City of Georgetown and in 2006 was acquired by the National Society of the Colonial Dames of America in the State of South Carolina. Today, the house is open to the public for tours and event space. The George Pawley House has been known by several different names. The house museum today is known as the Stewart-Parker House, and has also been referred to as the Robert Stewart House and the Parker-Pawley House in the Georgetown Historic District National Register of Historic Places listing. Perpetual protection for the land, exterior, and interior has recently been secured with easements through Historic Charleston Foundation.

PROJECT LEADERS:

SHANNON DEPIESSE
KAELYN ROBINSON
PATRICIA ANNA WILLIS

TEAM MEMBERS:

GARRETT GRANTHAM
AVERY KENNEDY-PENUEL
JAS NORTON

HILLARY KING - ADJUNCT PROFESSOR

AMERICAN COLLEGE OF THE BUILDING ARTS
CHARLESTON, SC

DRAWING INDEX:

COVER SHEET
SITE PLAN AND LOCATION MAP
BASEMENT AND FIRST FLOOR PLANS
SECOND FLOOR AND ATTIC PLANS
ELEVATIONS
SECTION
18TH CENTURY DETAILS
19TH CENTURY ADDITION DETAILS
WINDOW AND DOOR DETAILS

DRAWN BY: PATRICIA ANNA WILLIS

NATIONAL PARK SERVICE
UNITED STATES DEPARTMENT OF THE INTERIOR

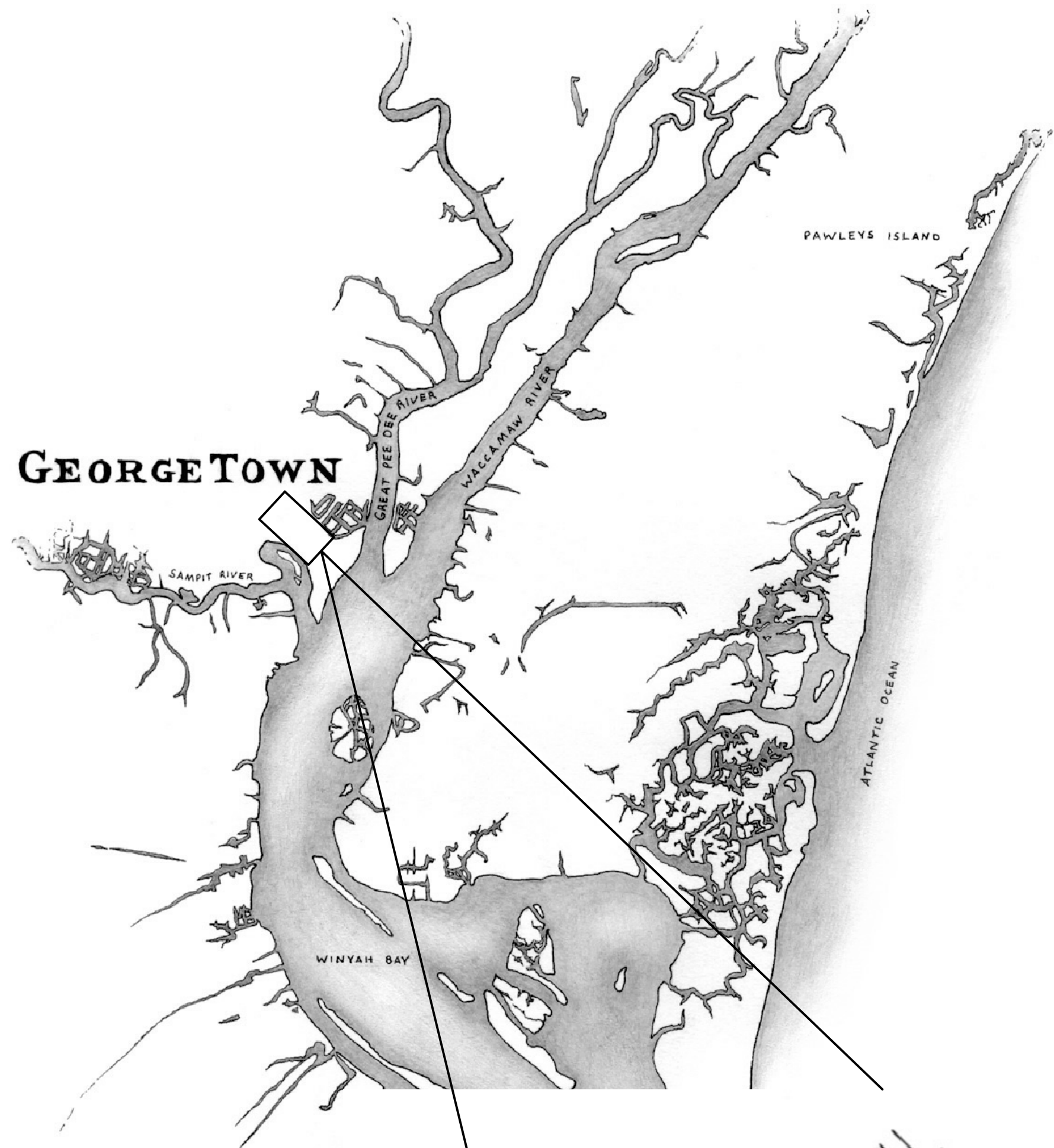
GEORGE PAWLEY HOUSE
1019 FRONT STREET GEORGETOWN GEORGETOWN COUNTY SOUTH CAROLINA

HISTORIC AMERICAN
BUILDINGS SURVEY
SHEET 1 OF 9 SHEETS

SURVEY NO.

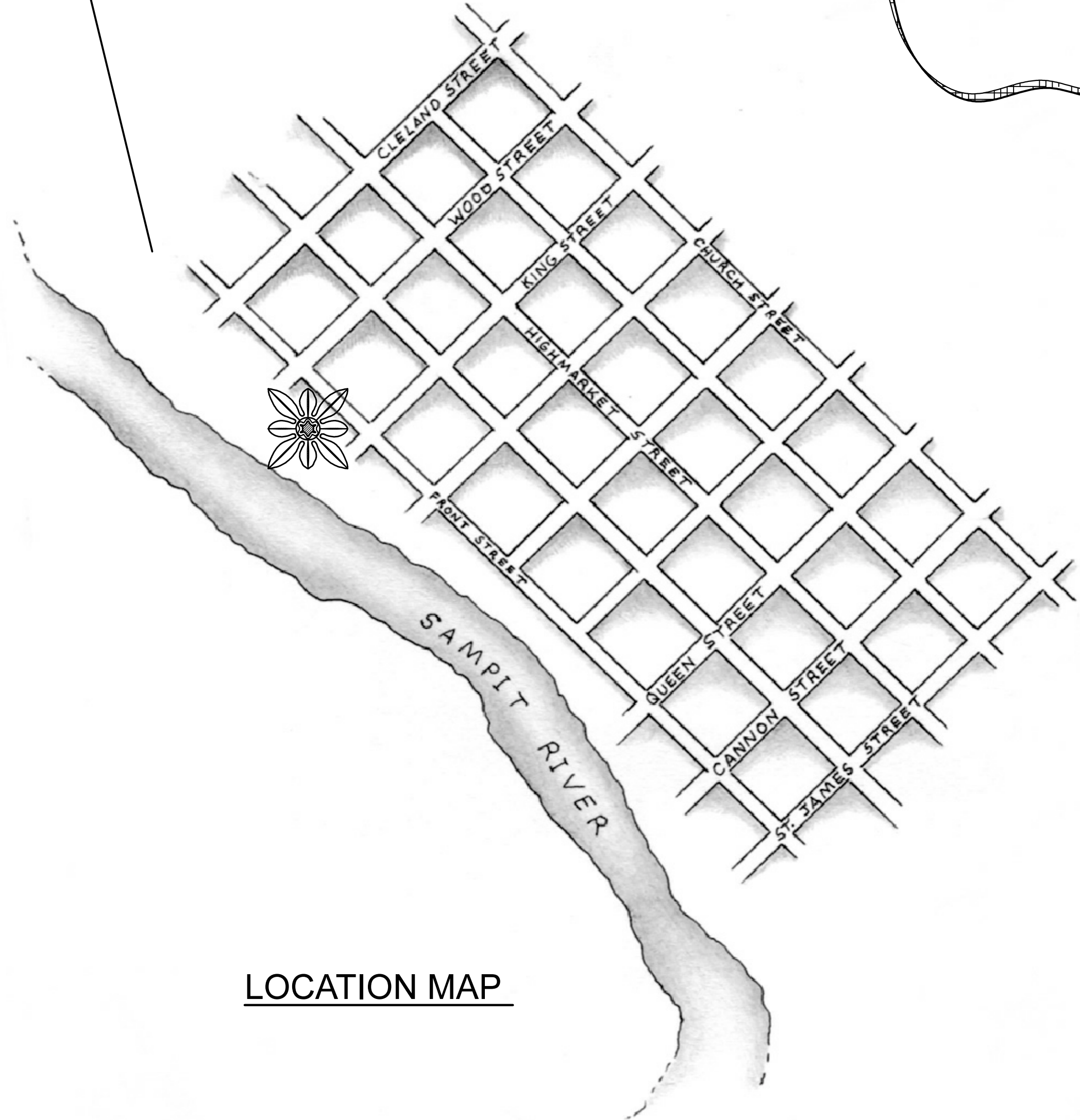
UNIVERSITY OF CHARLOTTE
FIELD NUMBER

IF REPRODUCED, PLEASE CREDIT THE HISTORIC AMERICAN BUILDINGS SURVEY, NATIONAL PARK SERVICE, NAME OF DELINEATOR, DATE OF DRAWING

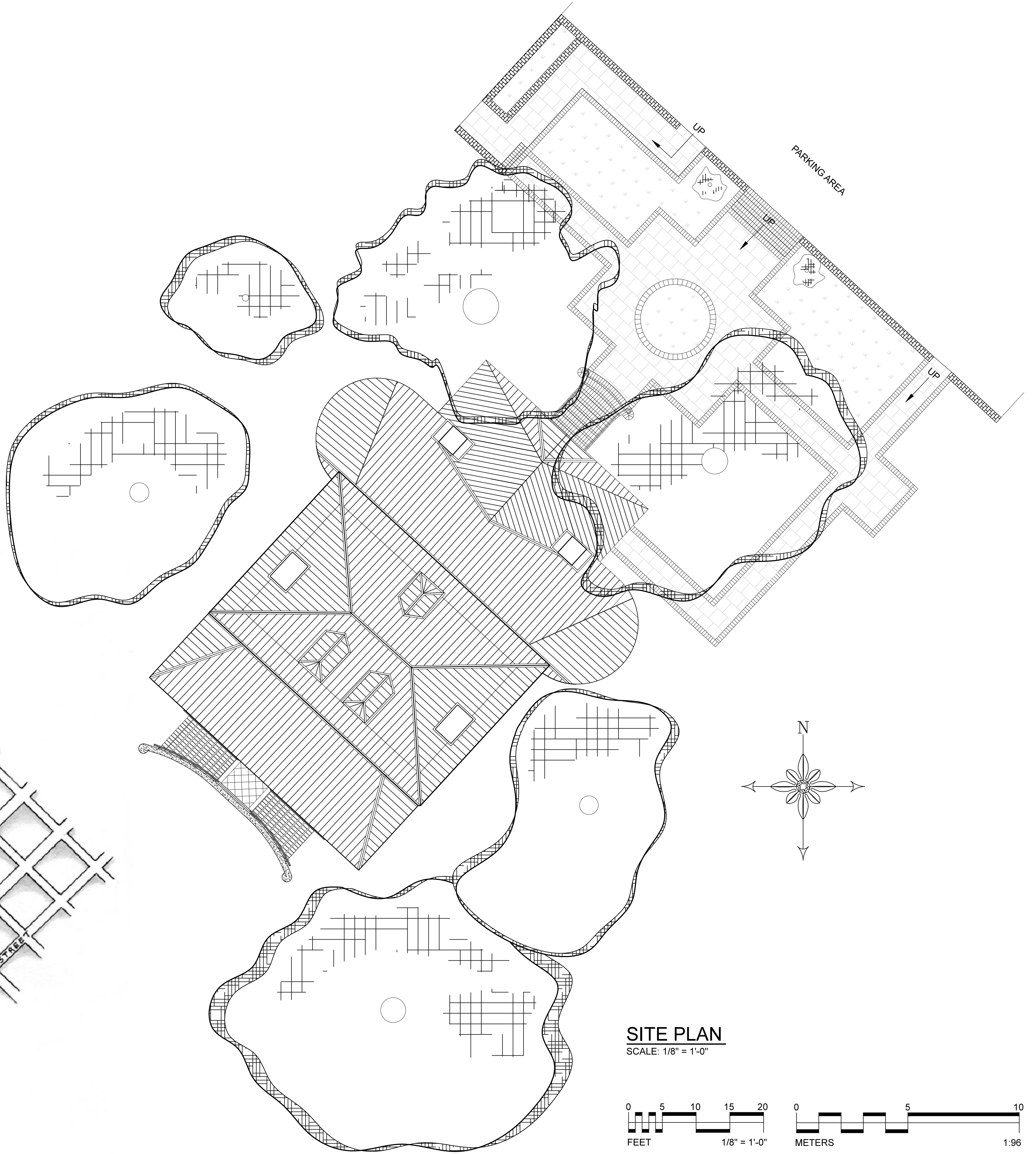


GEORGETOWN

VICINITY MAP

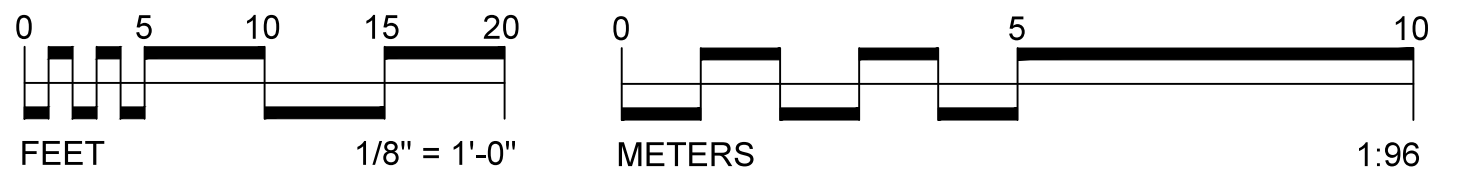


LOCATION MAP



SITE PLAN

SCALE: 1/8" = 1'-0"



DRAWN BY: KAEALYN ROBINSON, SHANNON DEPIESSE, AVERY KENNEDY-PENUEL, GARRETT GRANTHAM

NATIONAL PARK SERVICE
UNITED STATES DEPARTMENT OF THE INTERIOR

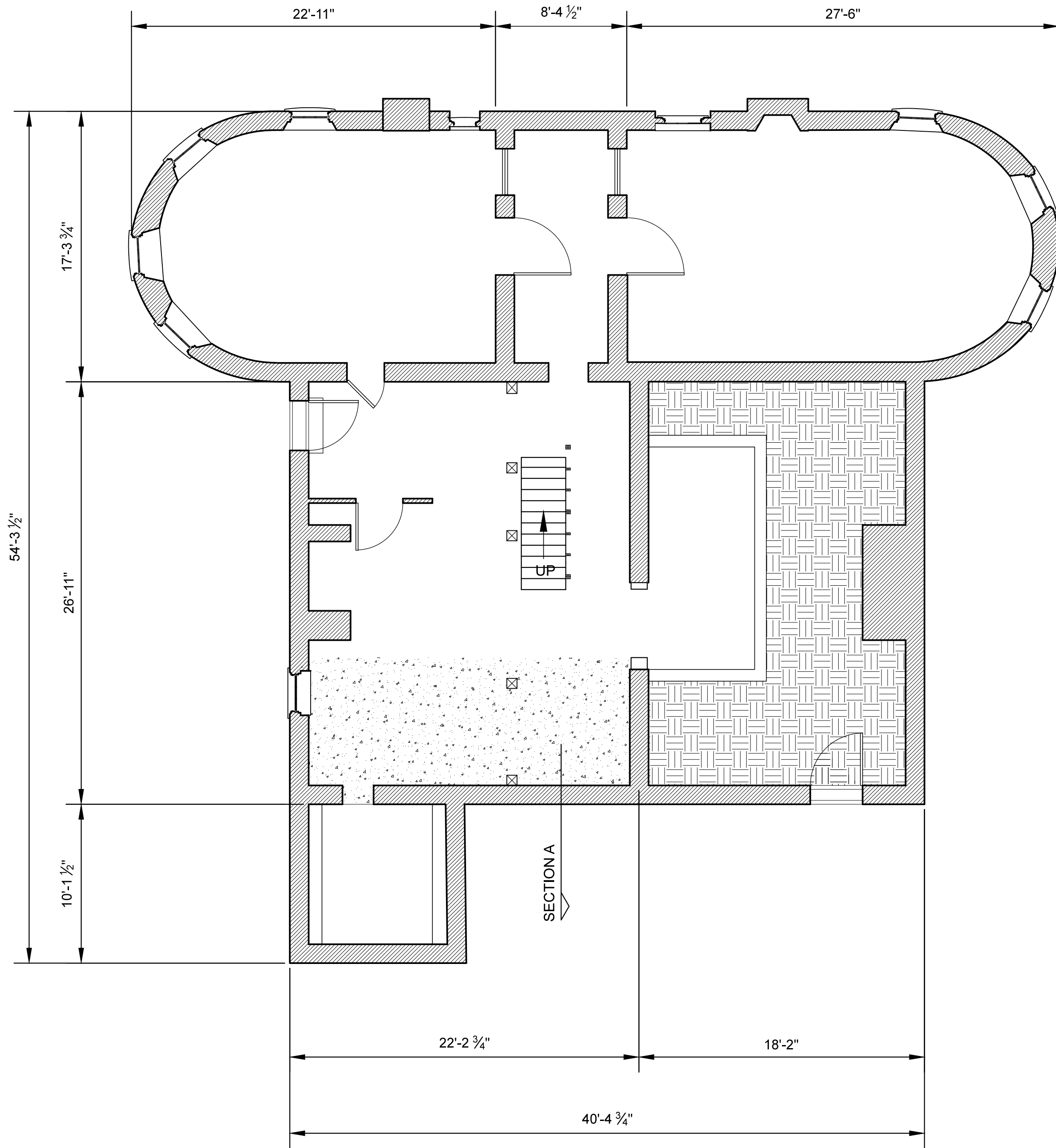
1019 FRONT STREET GEORGETOWN GEORGETOWN COUNTY SOUTH CAROLINA

GEORGE PAWLEY HOUSE

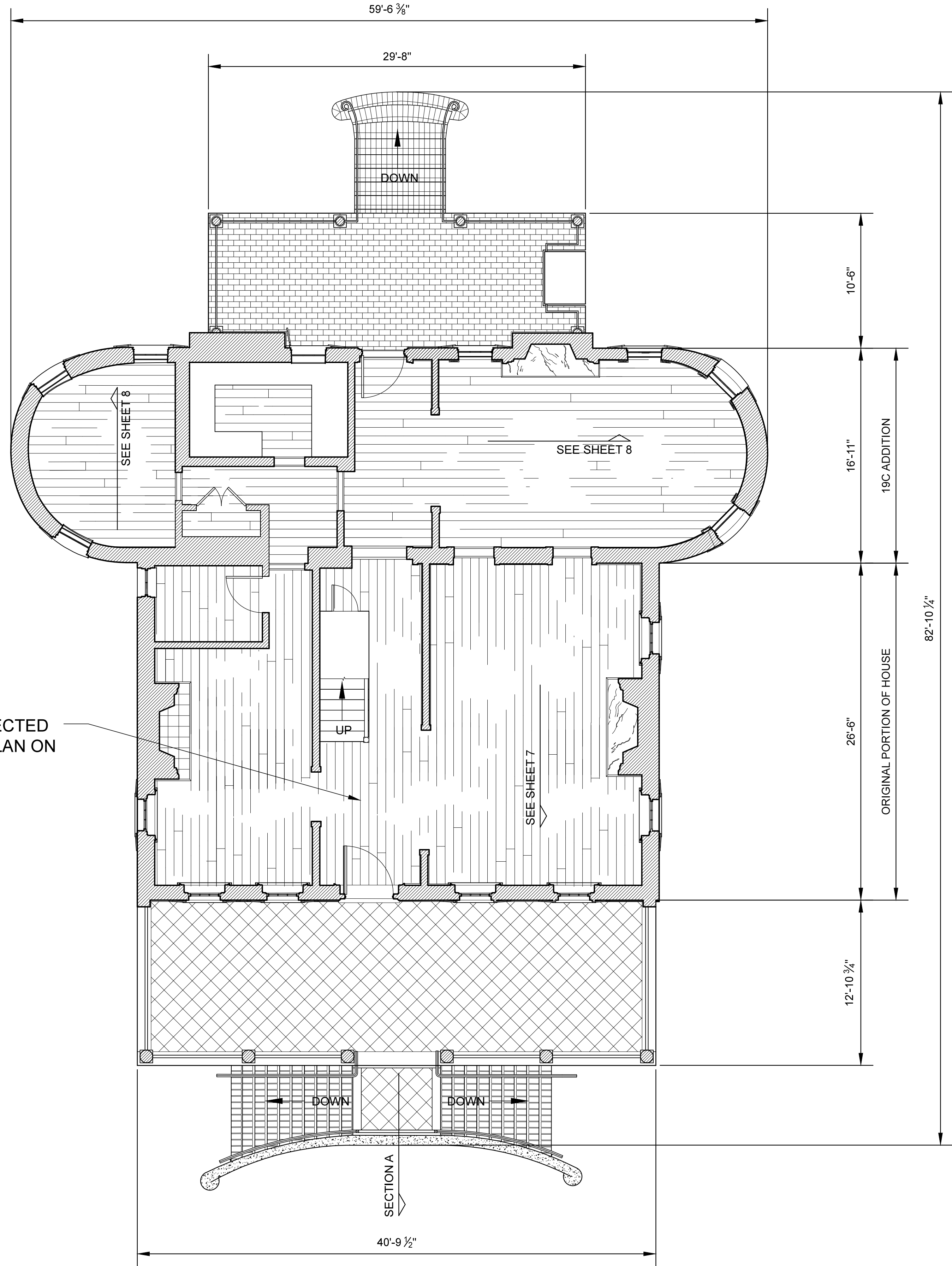
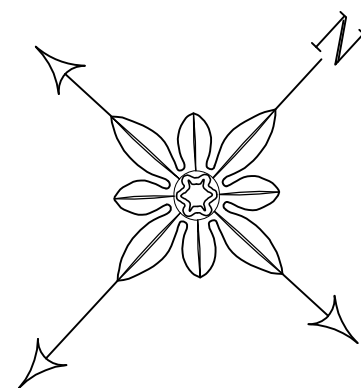
HISTORIC AMERICAN
BUILDINGS SURVEY
SHEET 2 OF 9 SHEETS

SURVEY NO.
LIBRARY OF CONGRESS
PAGE NUMBER

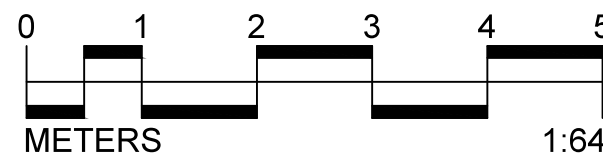
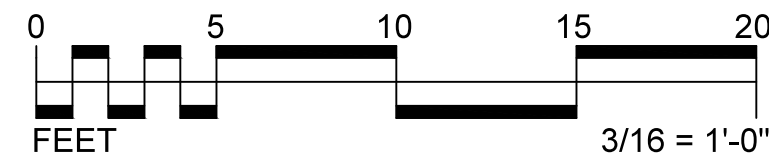
IF REPRODUCED, PLEASE CREDIT THE HISTORIC AMERICAN BUILDINGS SURVEY, NATIONAL PARK SERVICE, NAME OF Delineator, DATE OF DRAWING



BASEMENT PLAN
SCALE: 3/16" = 1' - 0"



FIRST FLOOR PLAN
SCALE: 3/16" = 1' - 0"



DRAWN BY: AVERY KENNEDY-PENUEL, KAELYN ROBINSON, SHANNON DEPIESSE

NATIONAL PARK SERVICE
UNITED STATES DEPARTMENT OF THE INTERIOR

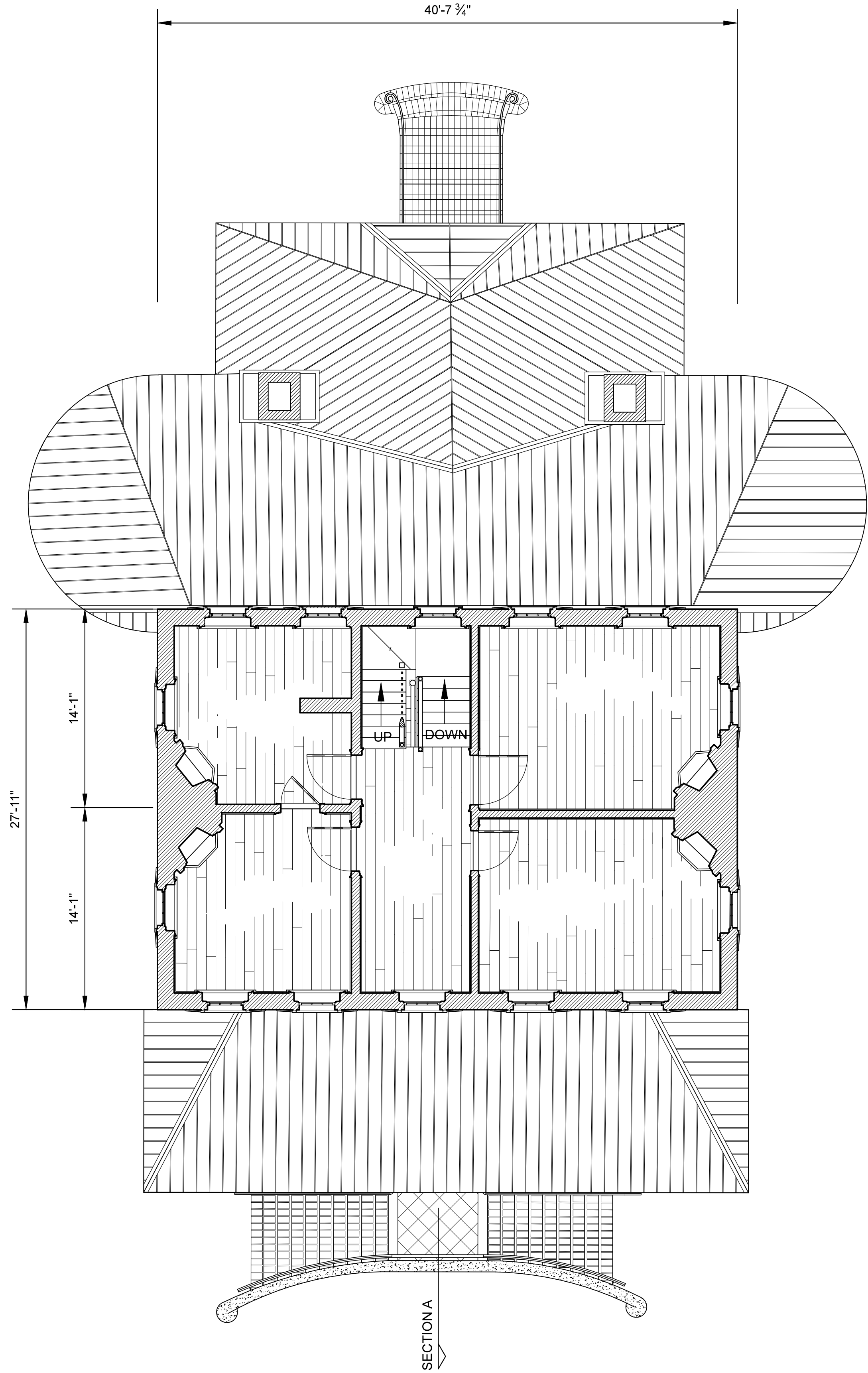
GEORGE PAWLEY HOUSE
1019 FRONT STREET GEORGETOWN GEORGETOWN COUNTY SOUTH CAROLINA

HISTORIC AMERICAN
BUILDINGS SURVEY
SHEET 3 OF 9 SHEETS

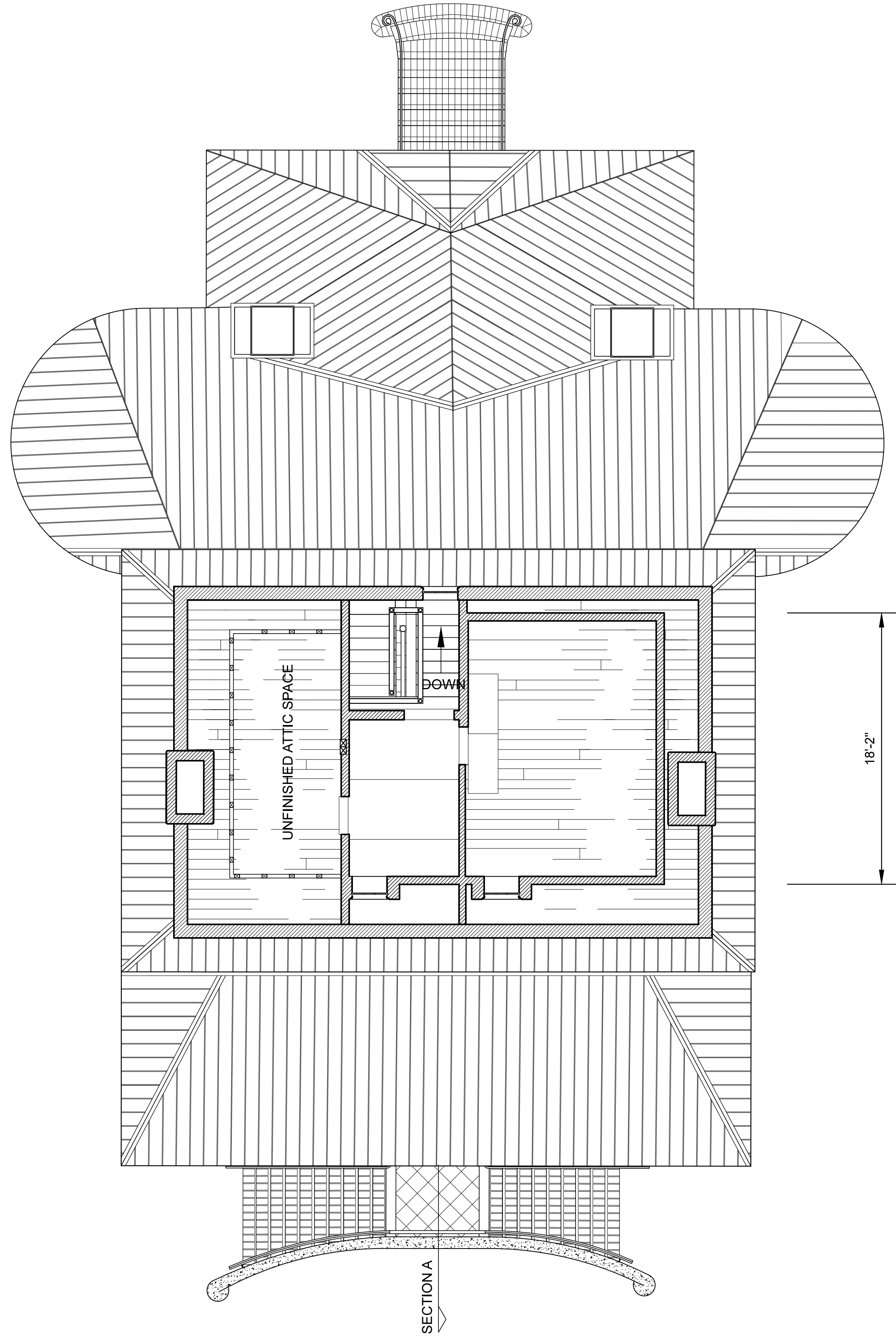
SURVEY NO.

REVISION NUMBER

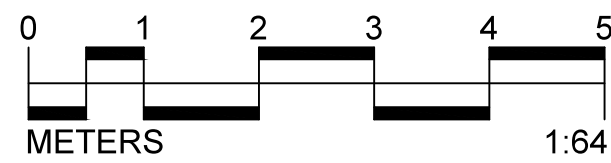
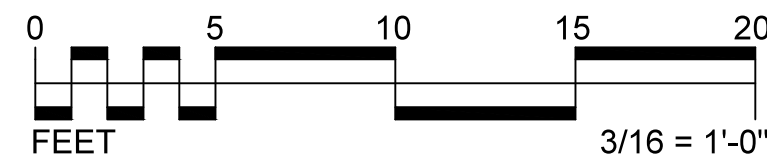
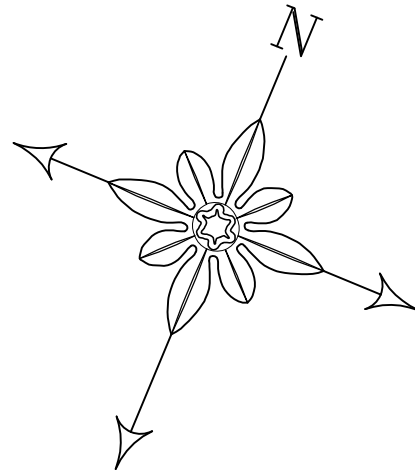
REPRODUCED: PLEASE CREDIT THE HISTORIC AMERICAN BUILDINGS SURVEY, NATIONAL PARK SERVICE, NAME OF DELINEATOR, DATE OF DRAWING

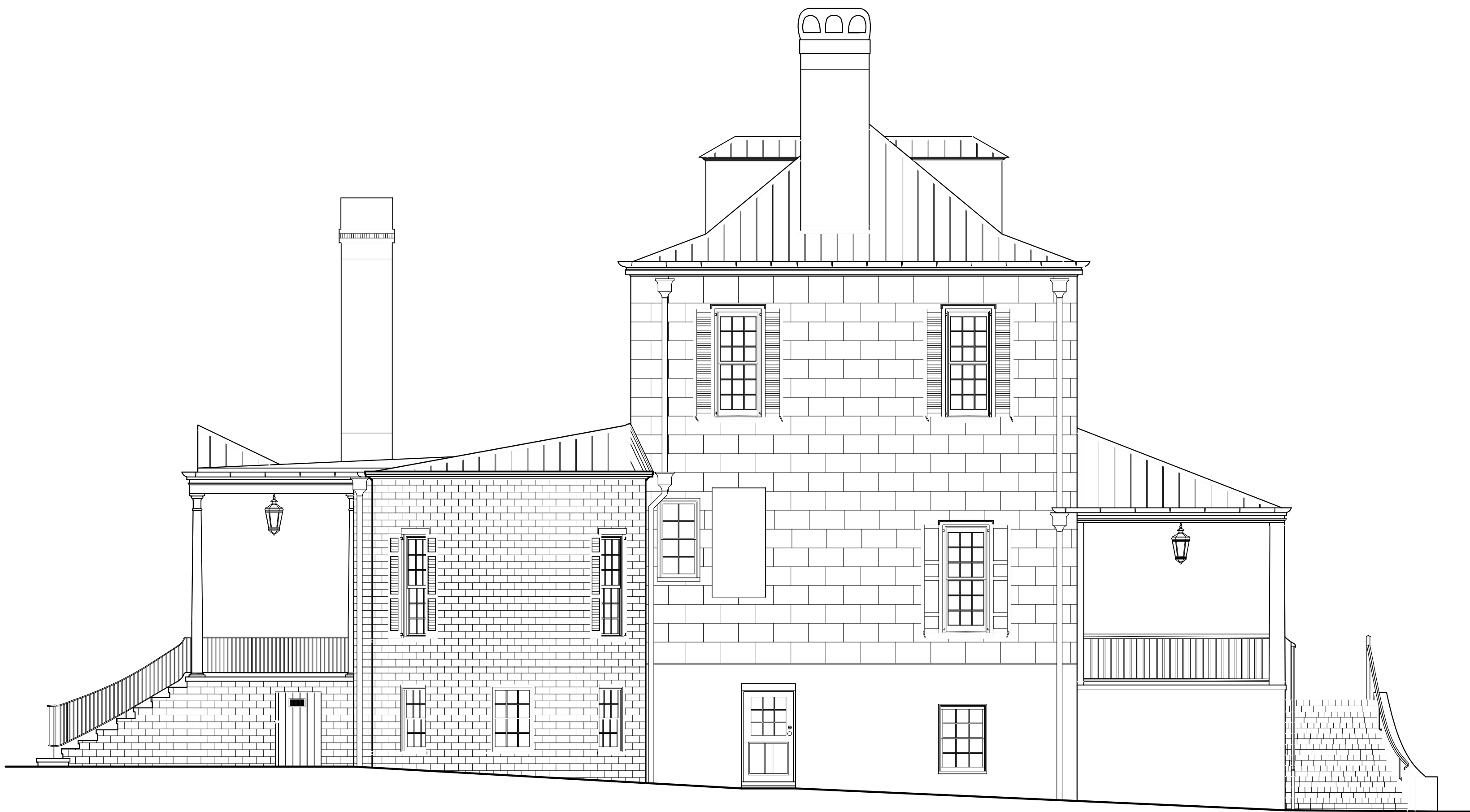


SECOND FLOOR PLAN
SCALE: 3/16" = 1' - 0"



ATTIC PLAN
SCALE: 3/16" = 1' - 0"





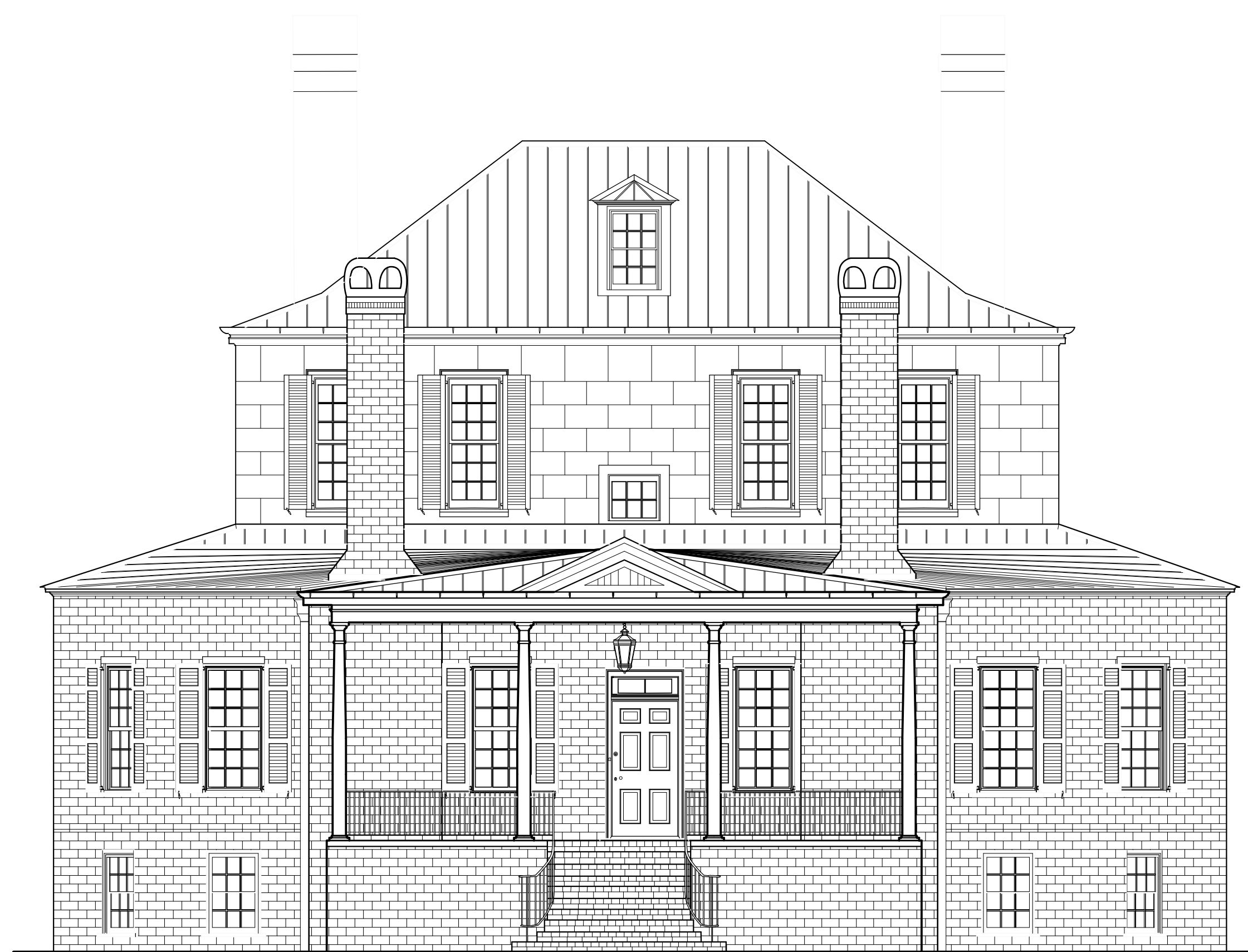
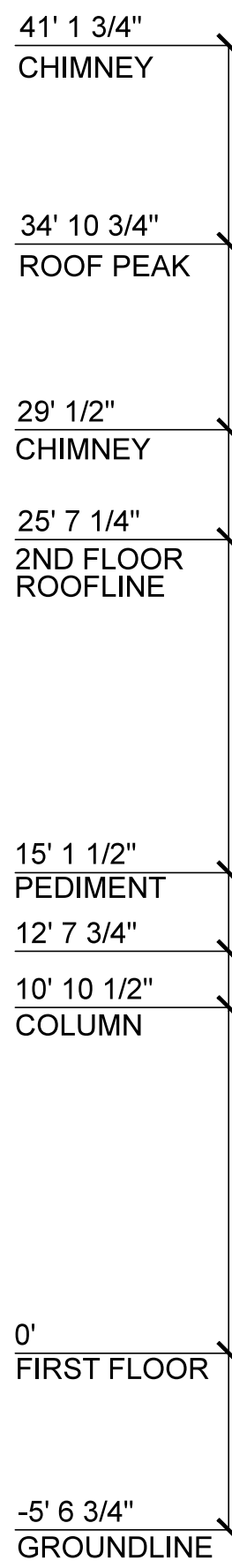
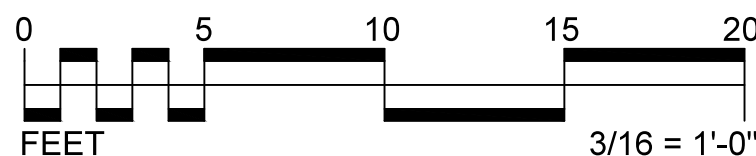
NORTHWEST ELEVATION

SCALE: 3/16" = 1' - 0"



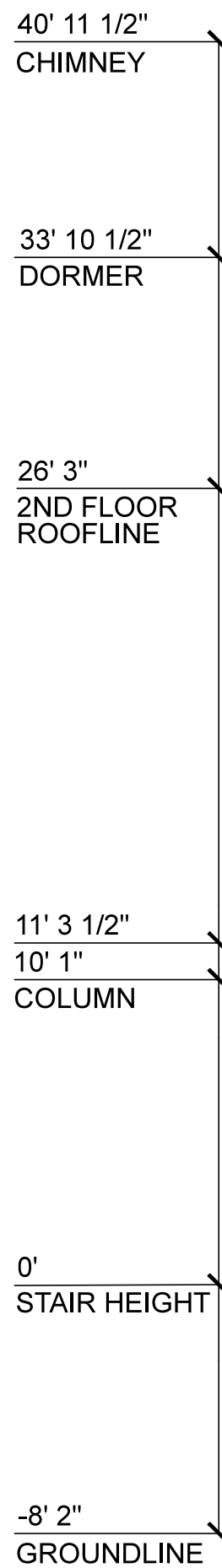
SOUTHWEST ELEVATION

SCALE: 3/16" = 1' - 0"



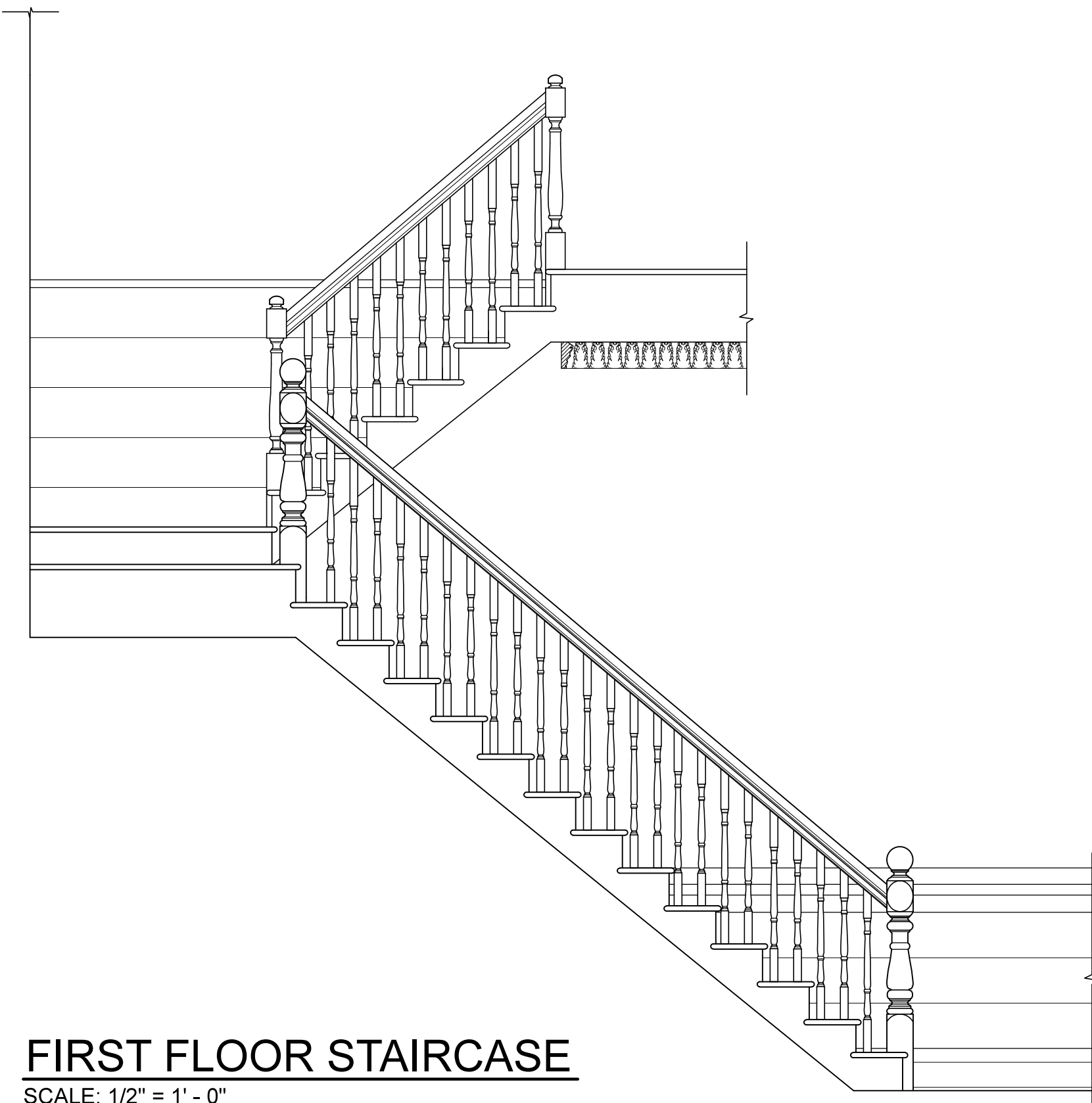
NORTHEAST ELEVATION (FACING FRONT STREET)

SCALE: 3/16" = 1' - 0"

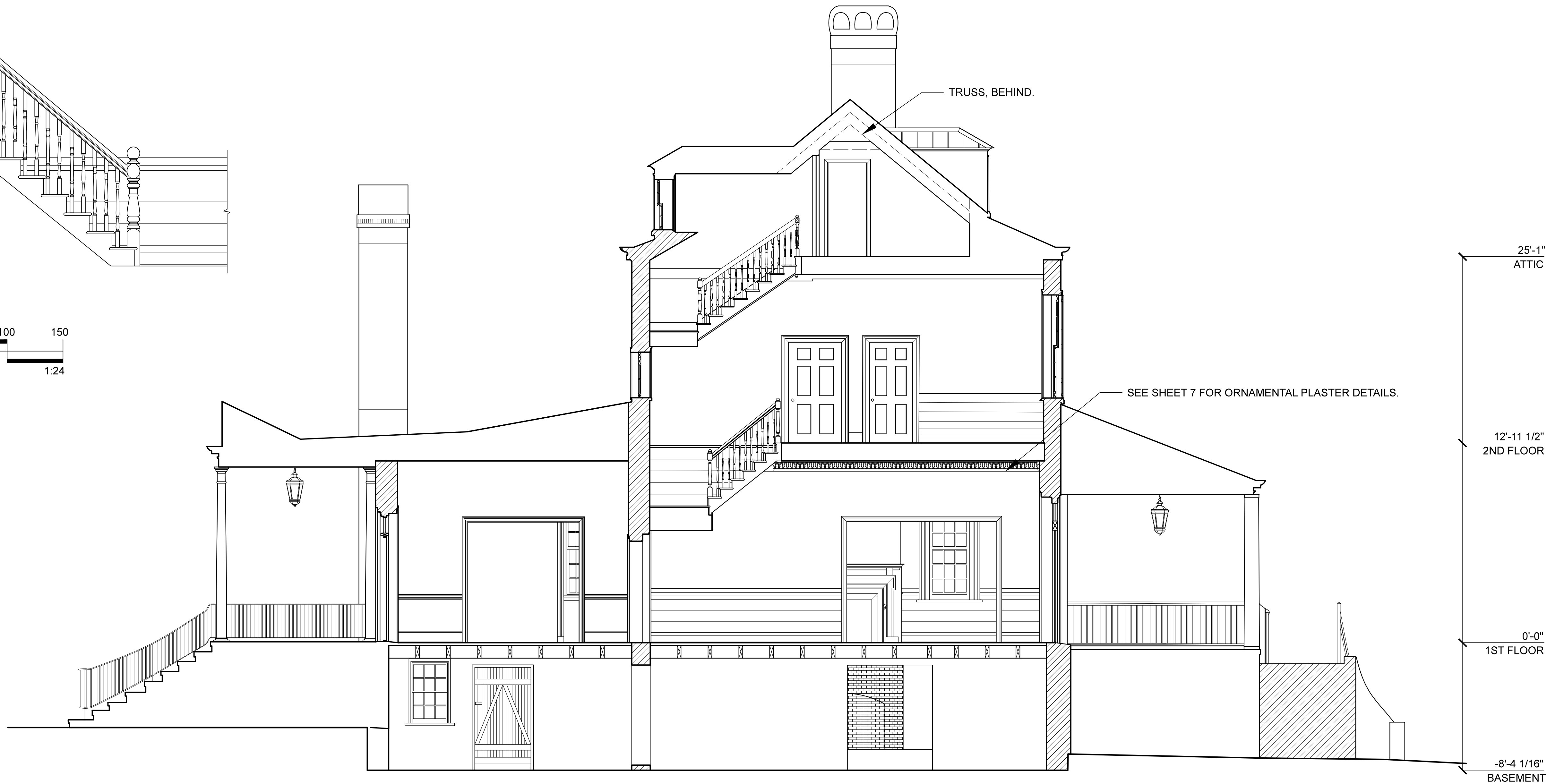
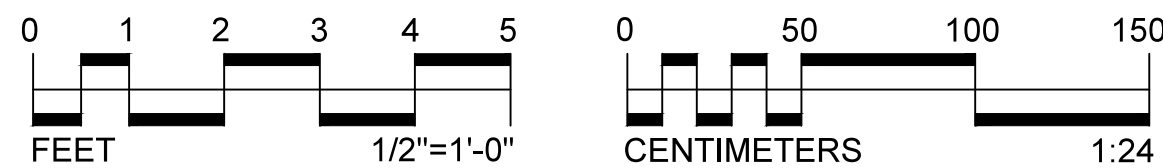


SOUTHWEST ELEVATION (FACING SAMPIT RIVER)

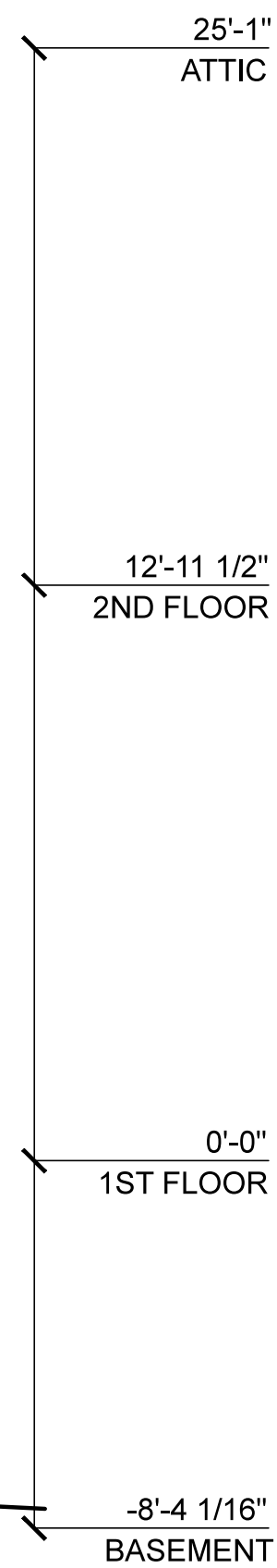
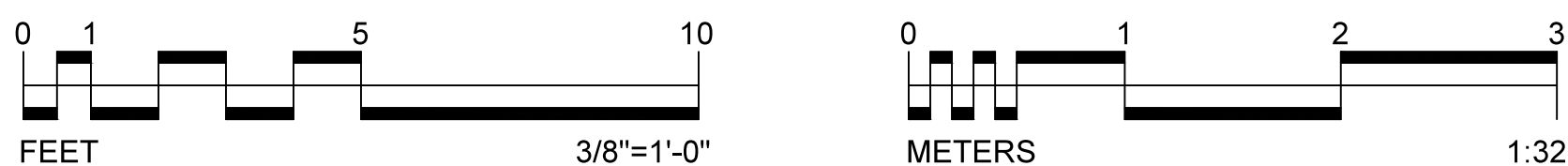
SCALE: 3/16" = 1' - 0"



FIRST FLOOR STAIRCASE
SCALE: 1/2" = 1' - 0"



SECTION A
SCALE: 3/8" = 1' - 0"



DRAWN BY: JAS NORTON, PATRICIA WILLIS, KAELYN ROBINSON, SHANNON DEPIESSE

NATIONAL PARK SERVICE
UNITED STATES DEPARTMENT OF THE INTERIOR

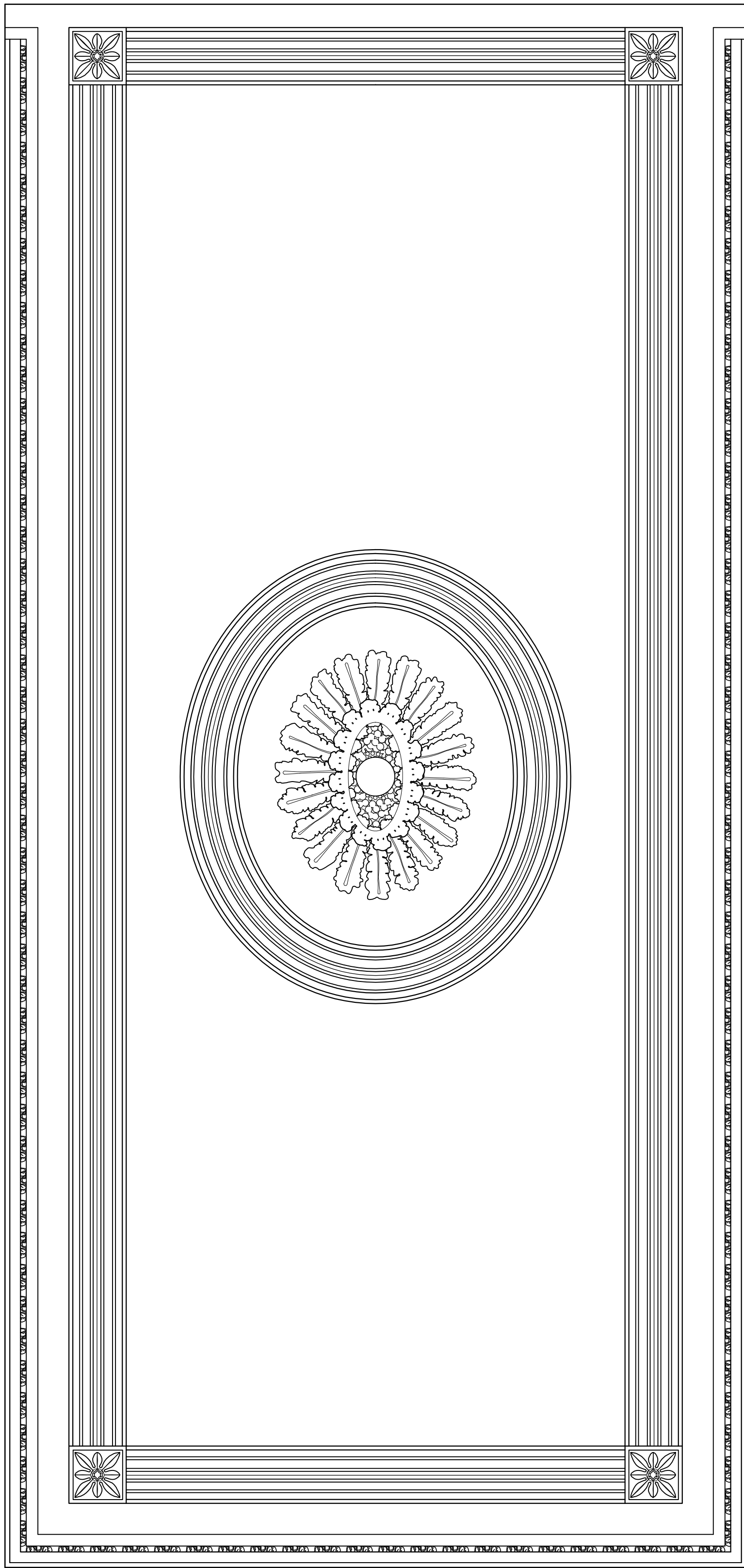
GEORGE PAWLEY HOUSE
1019 FRONT STREET GEORGETOWN GEORGETOWN COUNTY SOUTH CAROLINA

HISTORIC AMERICAN
BUILDINGS SURVEY
SHEET 6 OF 9 SHEETS

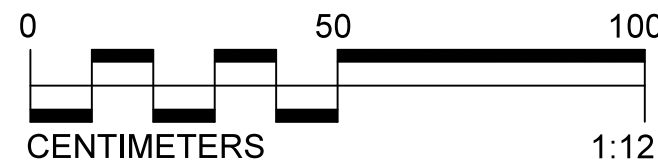
SURVEY NO.

LIBRARY OF CONGRESS
PREF. NUMBER

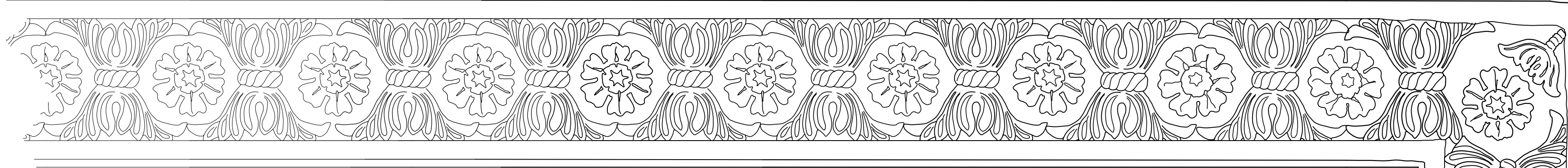
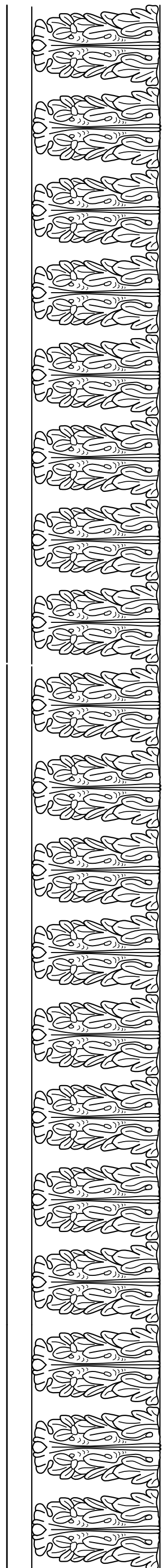
IF REPRODUCED, PLEASE CREDIT THE HISTORIC AMERICAN BUILDINGS SURVEY, NATIONAL PARK SERVICE, NAME OF Delineator, DATE OF DRAWING



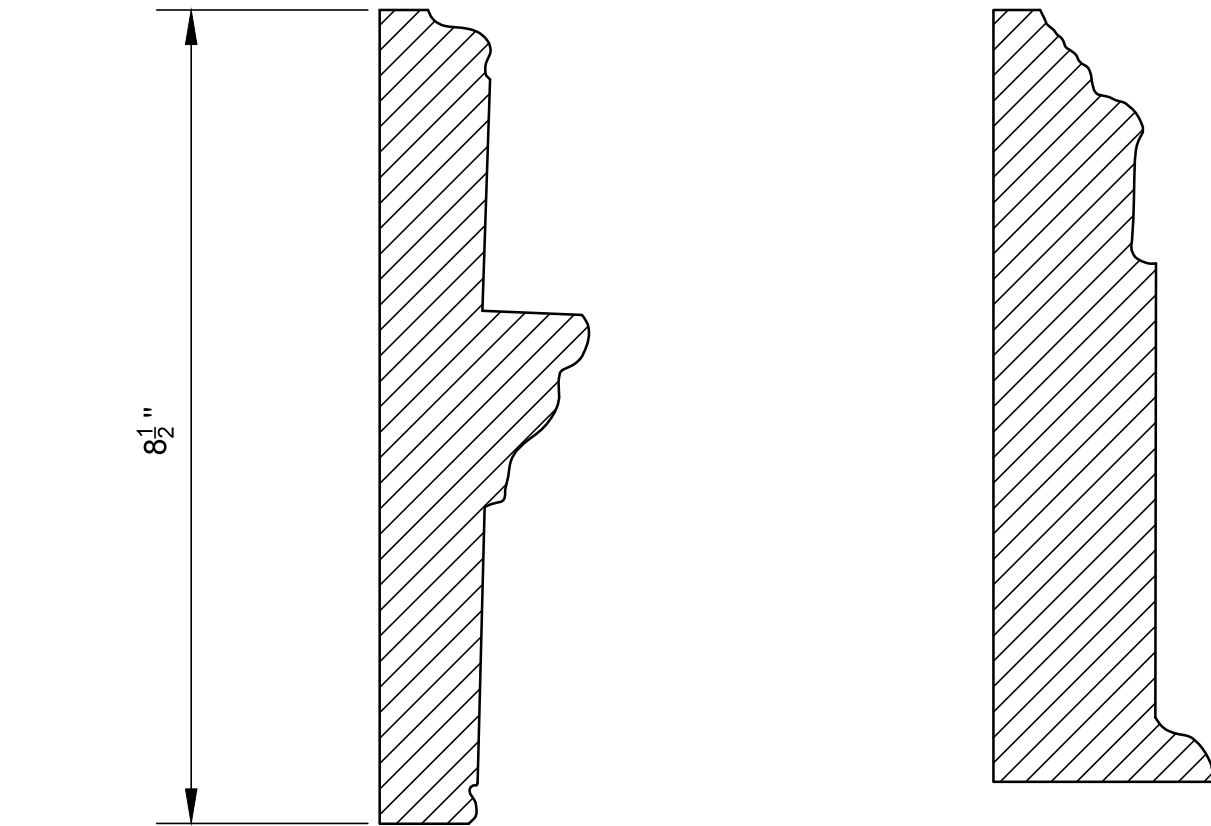
REFLECTED CEILING PLAN - ENTRY
SCALE: 1" = 1' - 0"



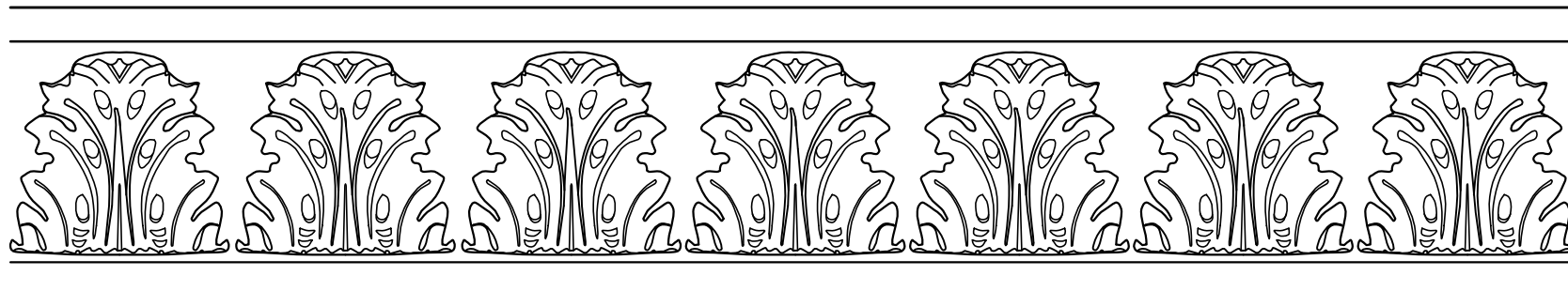
CROWN MOULDING - ENTRY
SCALE: 3" = 1' - 0"



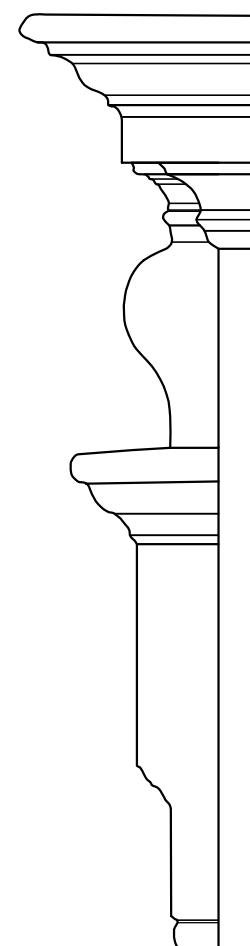
PLASTER CEILING BORDER
SCALE: 3" = 1' - 0"



MOULDING PROFILES - CHAIR AND BASEBOARD
SCALE: 6" = 1' - 0"



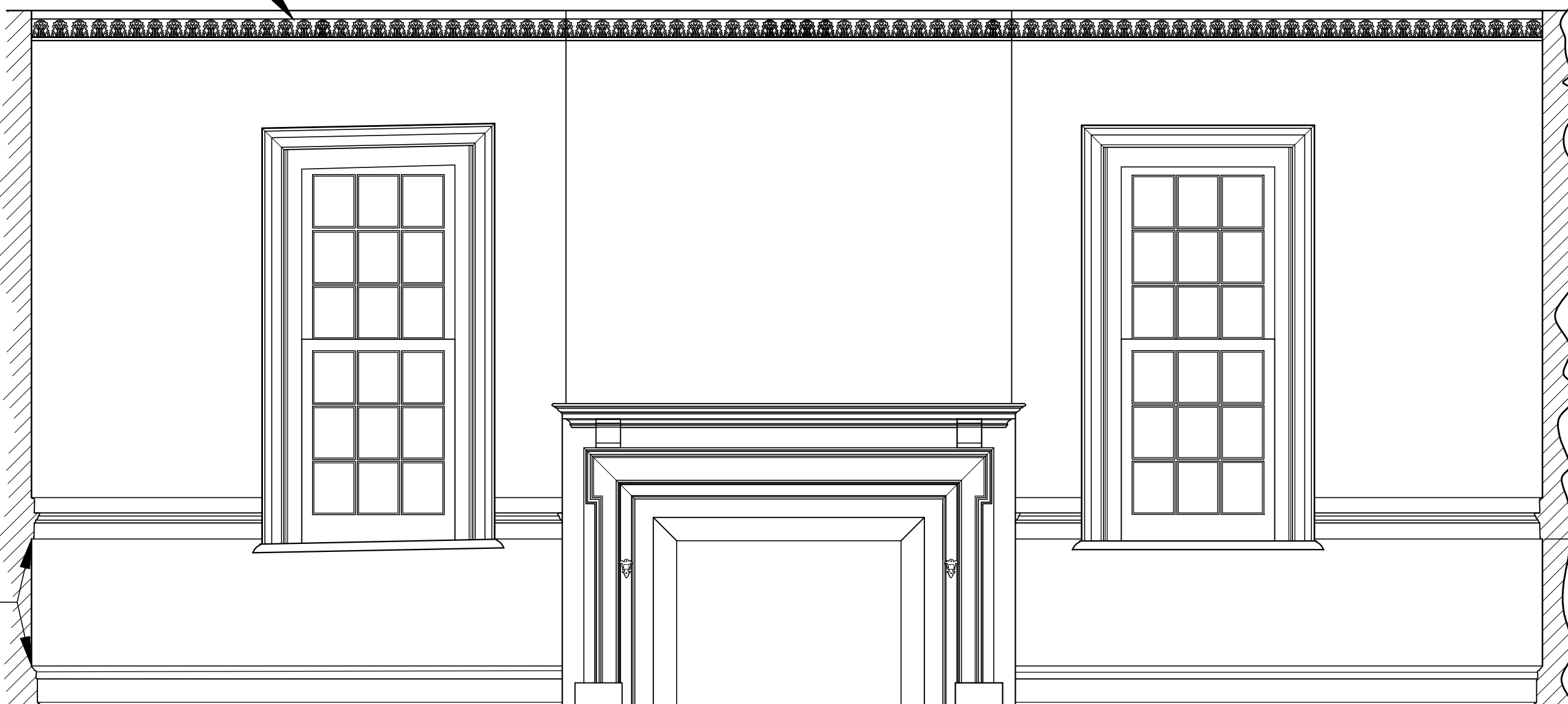
PLASTER CROWN MOULDING
SCALE: 3" = 1' - 0"



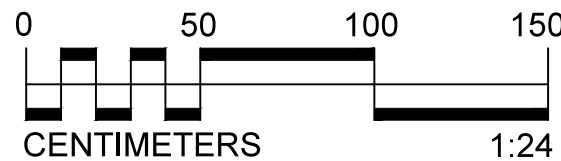
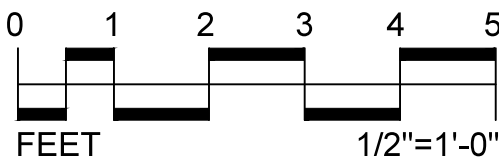
FIREPLACE SURROUND
SCALE: 3" = 1' - 0"

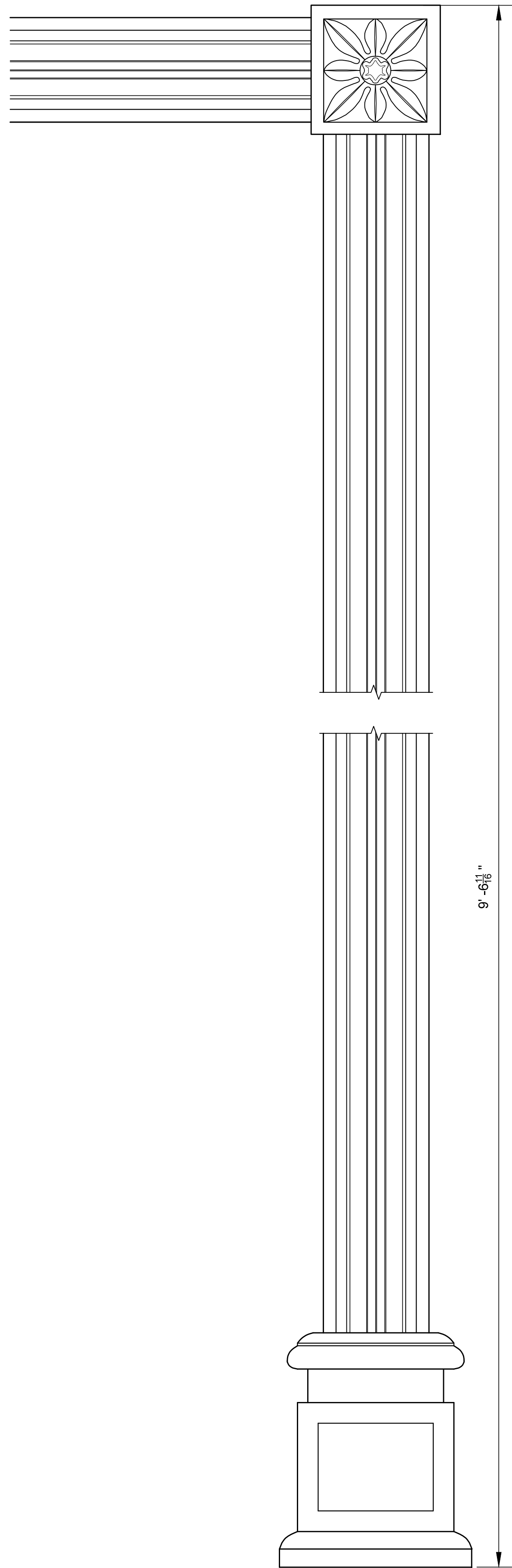
FOR DETAIL - SEE CEILING BORDER
AND CROWN MOULDING ABOVE

FOR DETAIL -
SEE MOULDING
PROFILES ABOVE

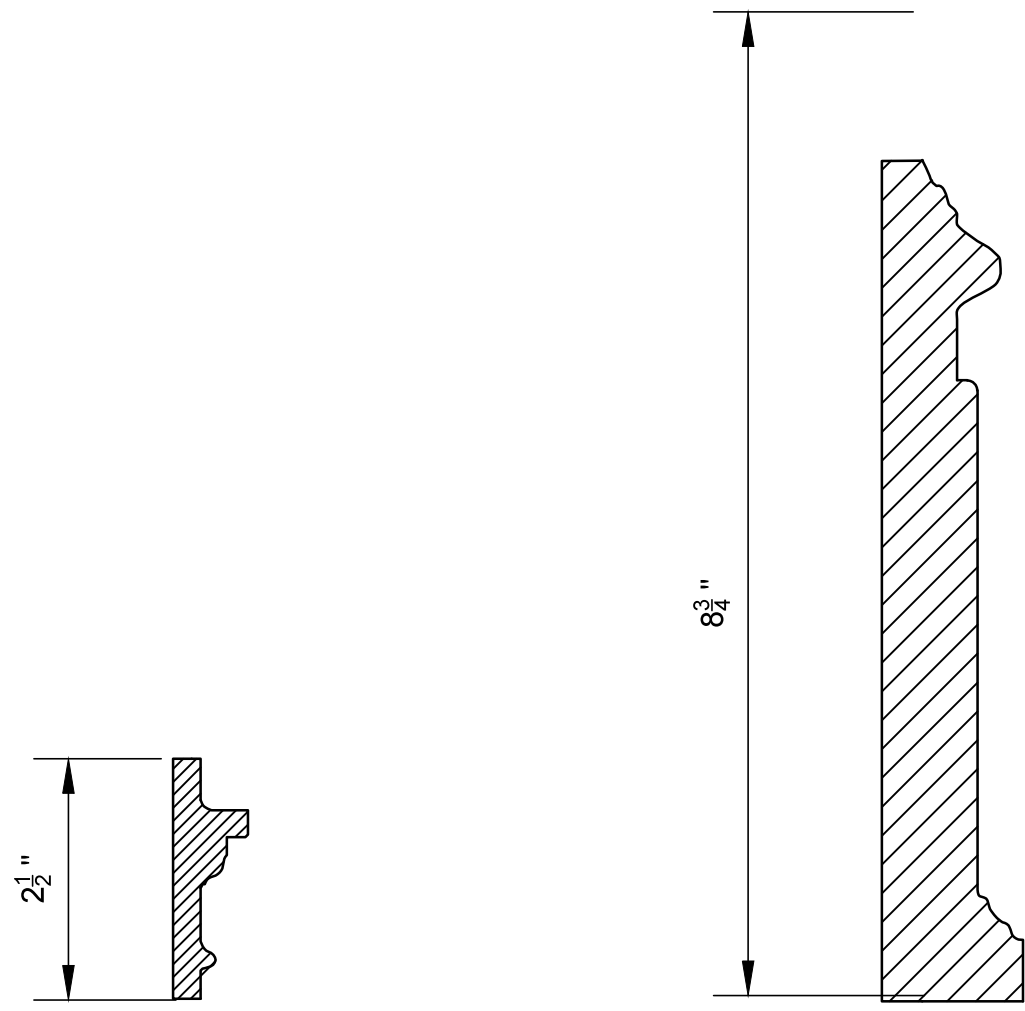


18TH C INTERIOR ELEVATION
SCALE: 1/2" = 1' - 0"

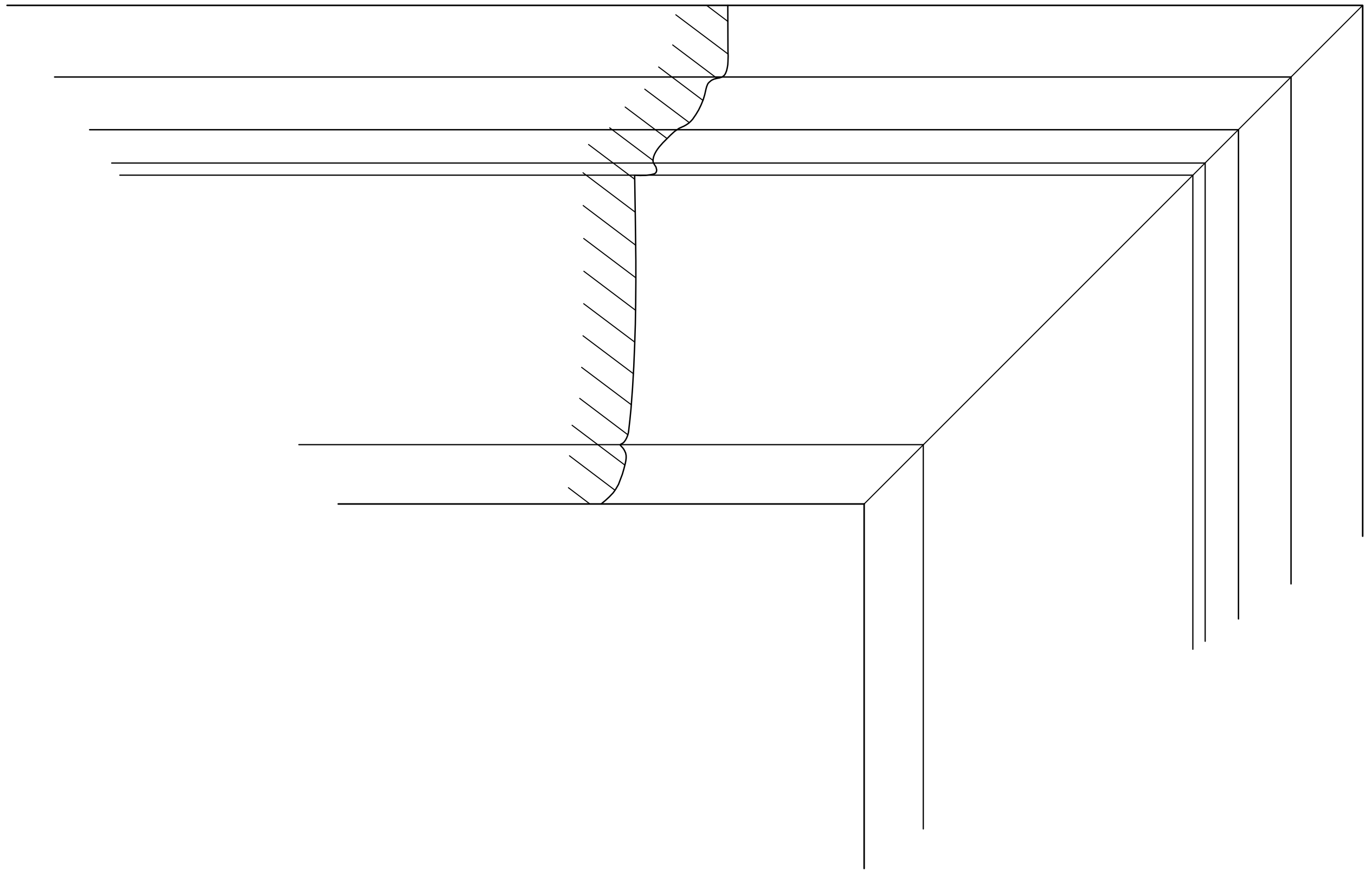




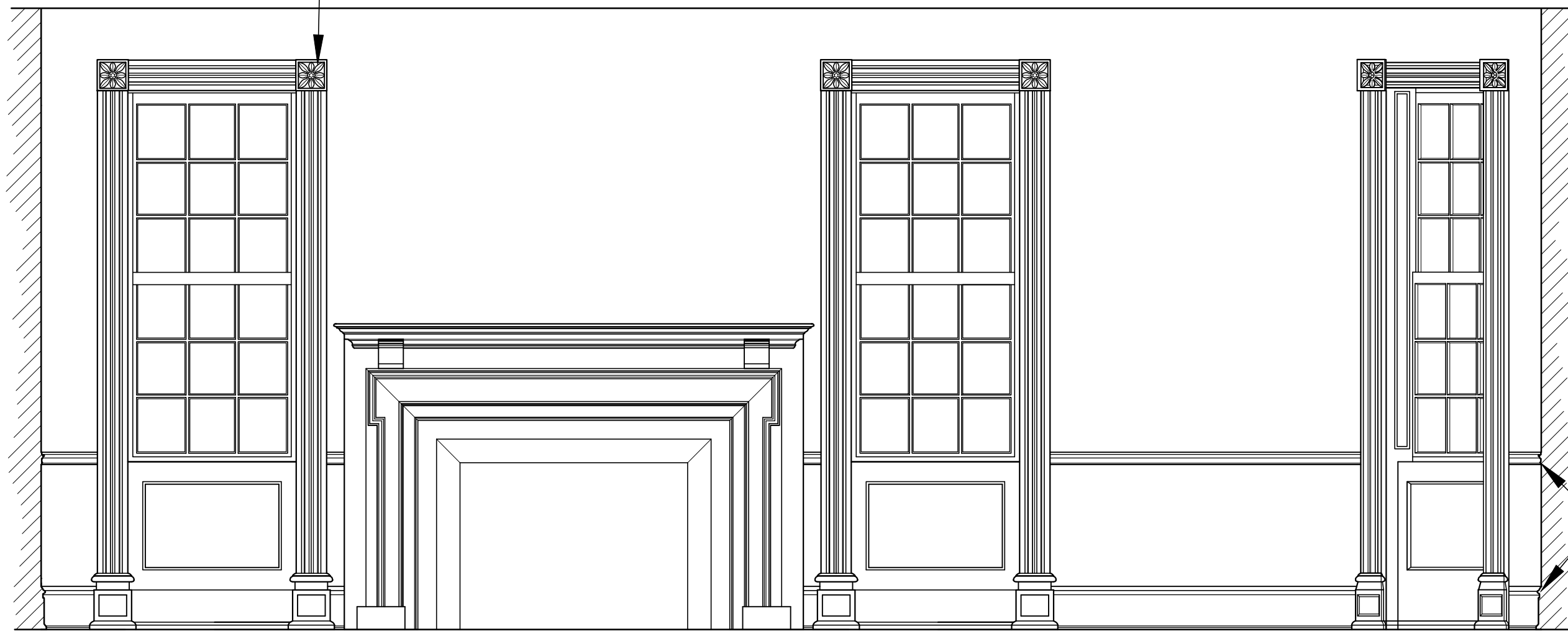
MOULDING PROFILES - CHAIR AND BASEBOARD
SCALE: 6" = 1' - 0"



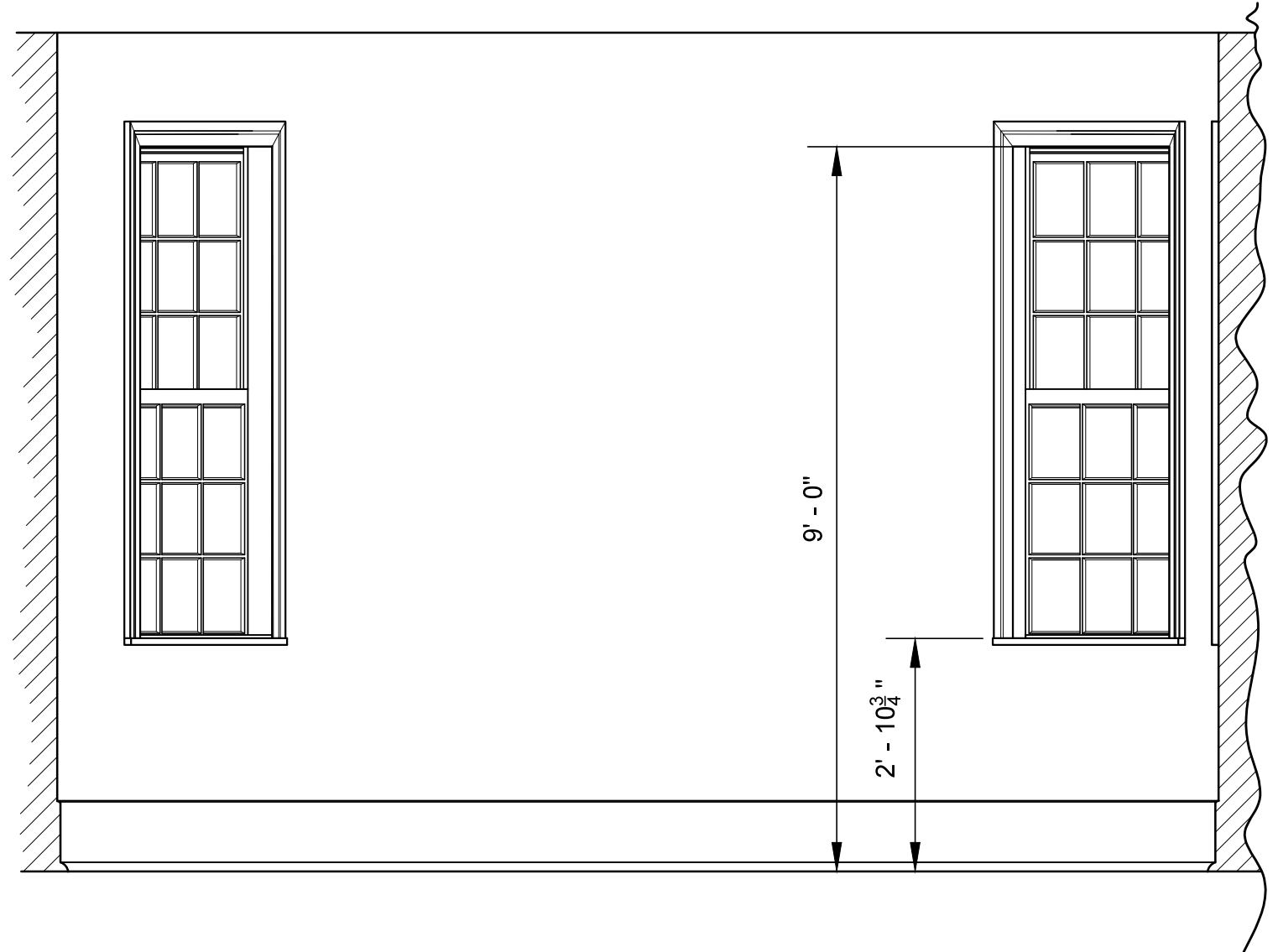
MOULDING DETAIL-?
SCALE: 1' - 0" = 1' - 0"



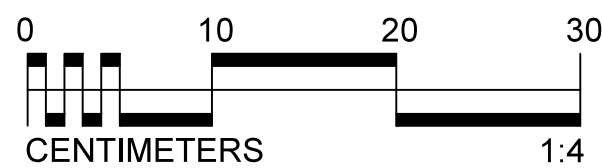
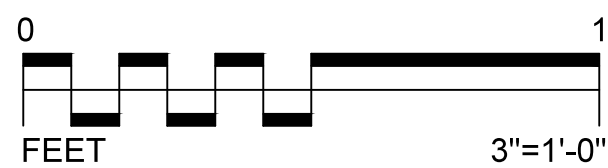
FOR DETAIL - SEE WINDOW TRIM



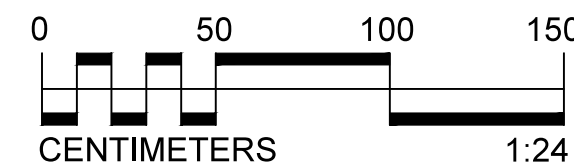
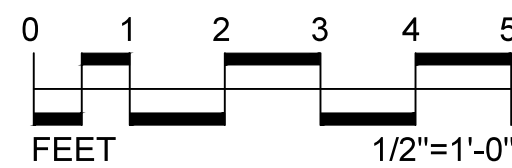
FOR DETAIL -
SEE MOULDING
PROFILES ABOVE

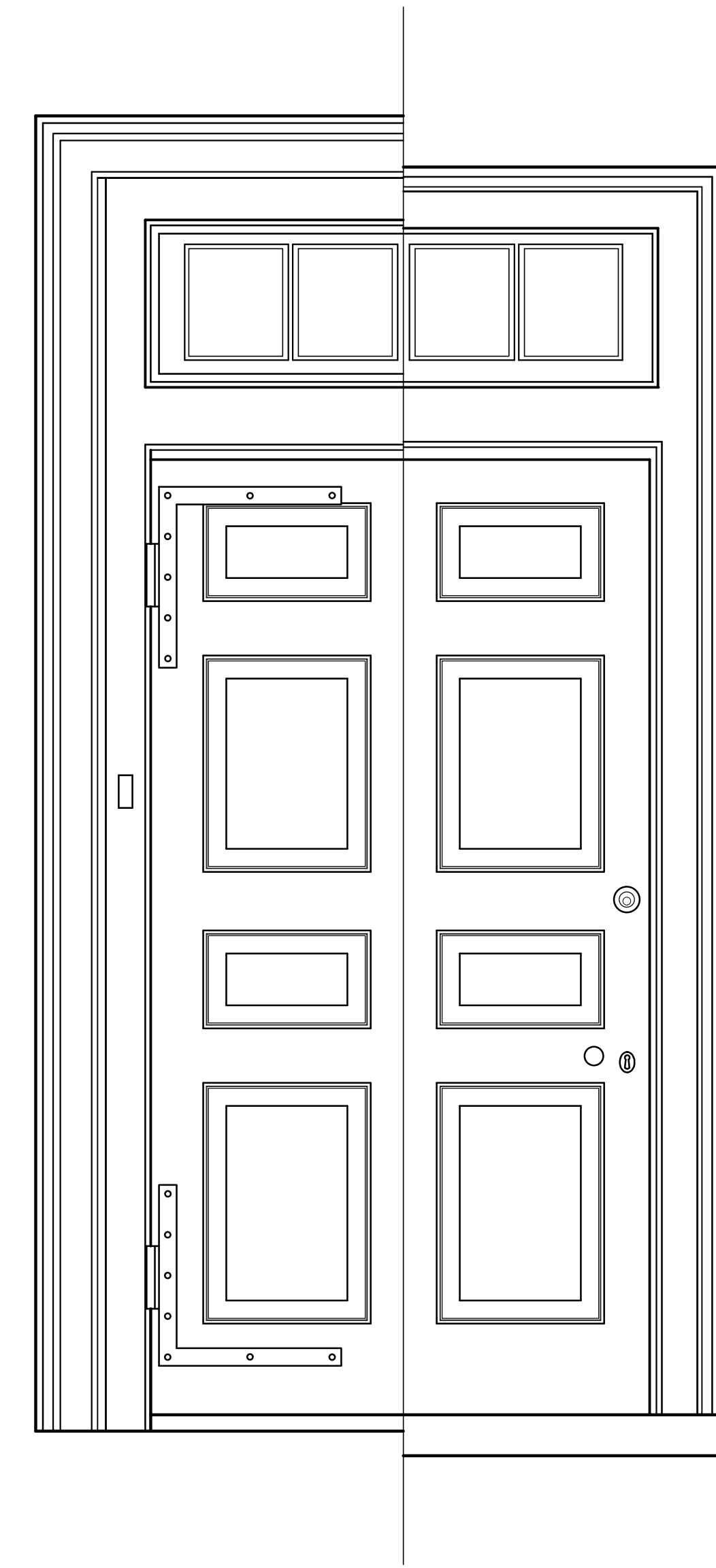


WINDOW TRIM DETAILS - NORTHWEST WING
SCALE: 3" = 1' - 0"

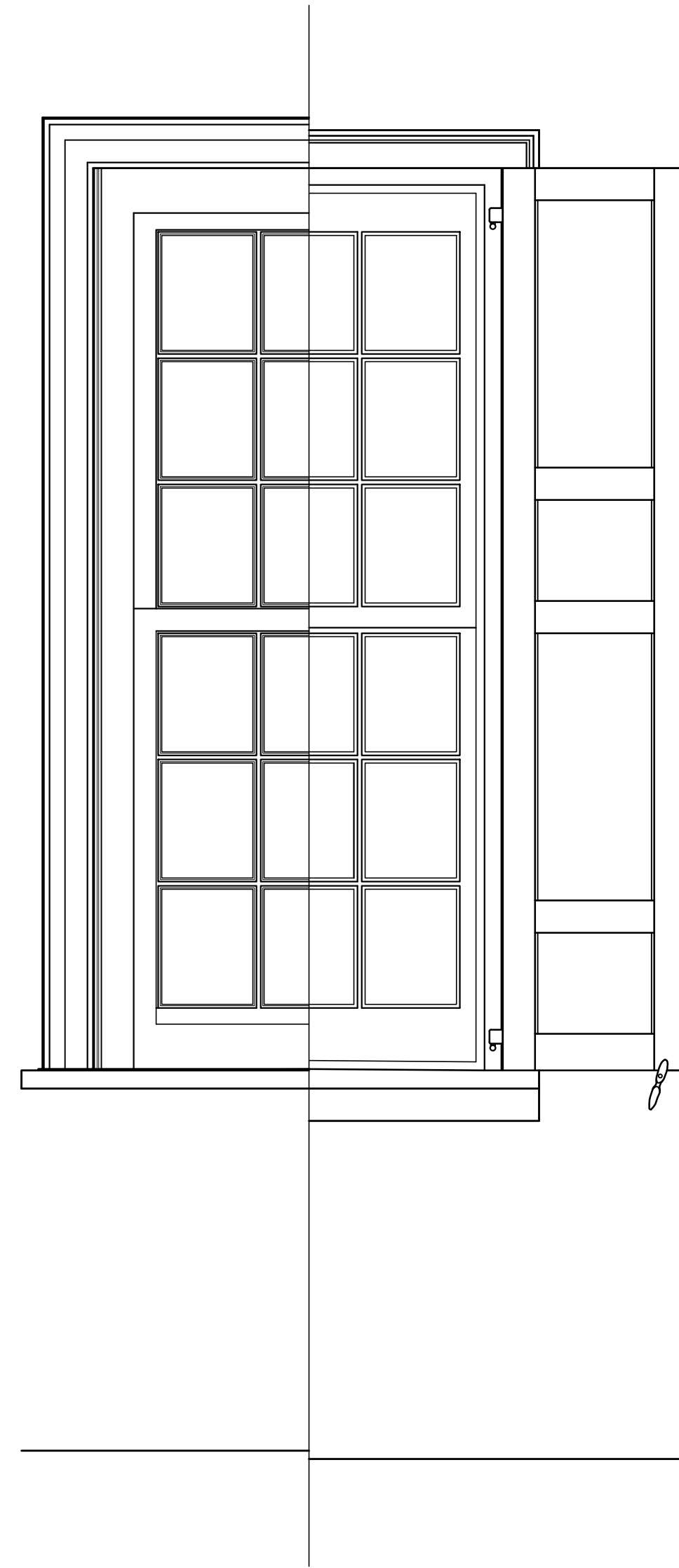


19TH C INTERIOR ELEVATIONS- NORTHWEST AND SOUTHEAST WINGS
SCALE: 1/2" = 1' - 0"

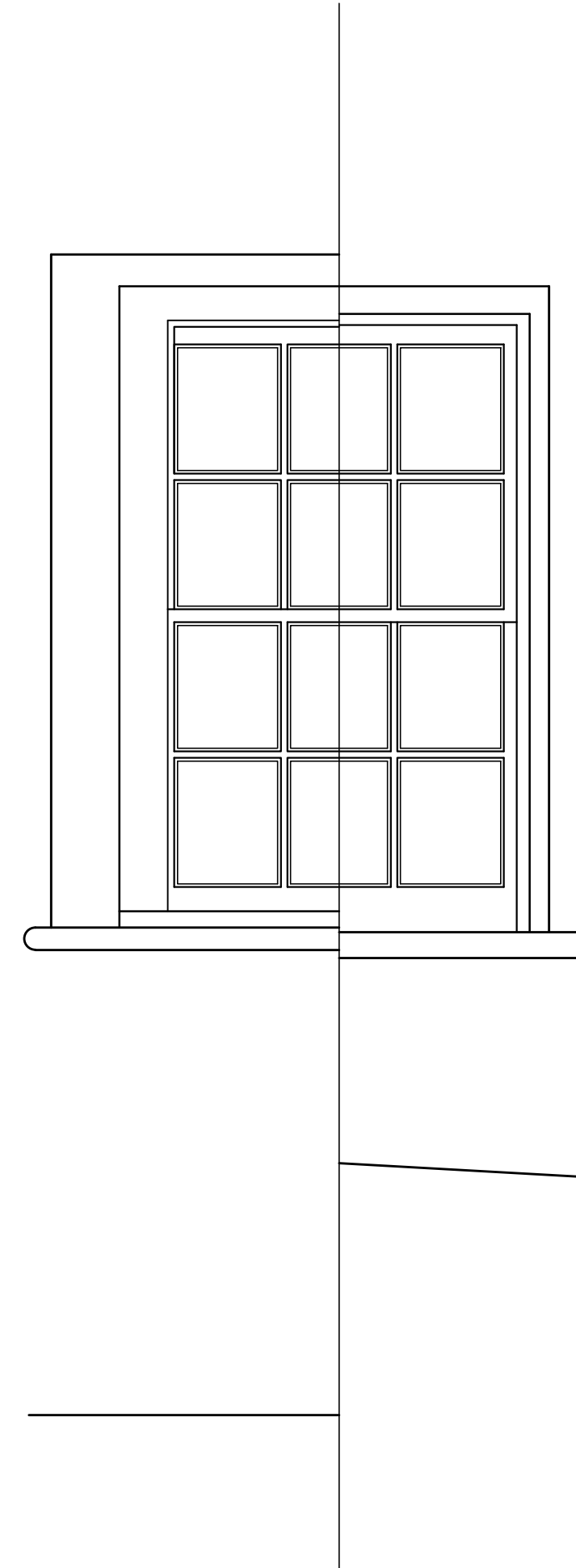




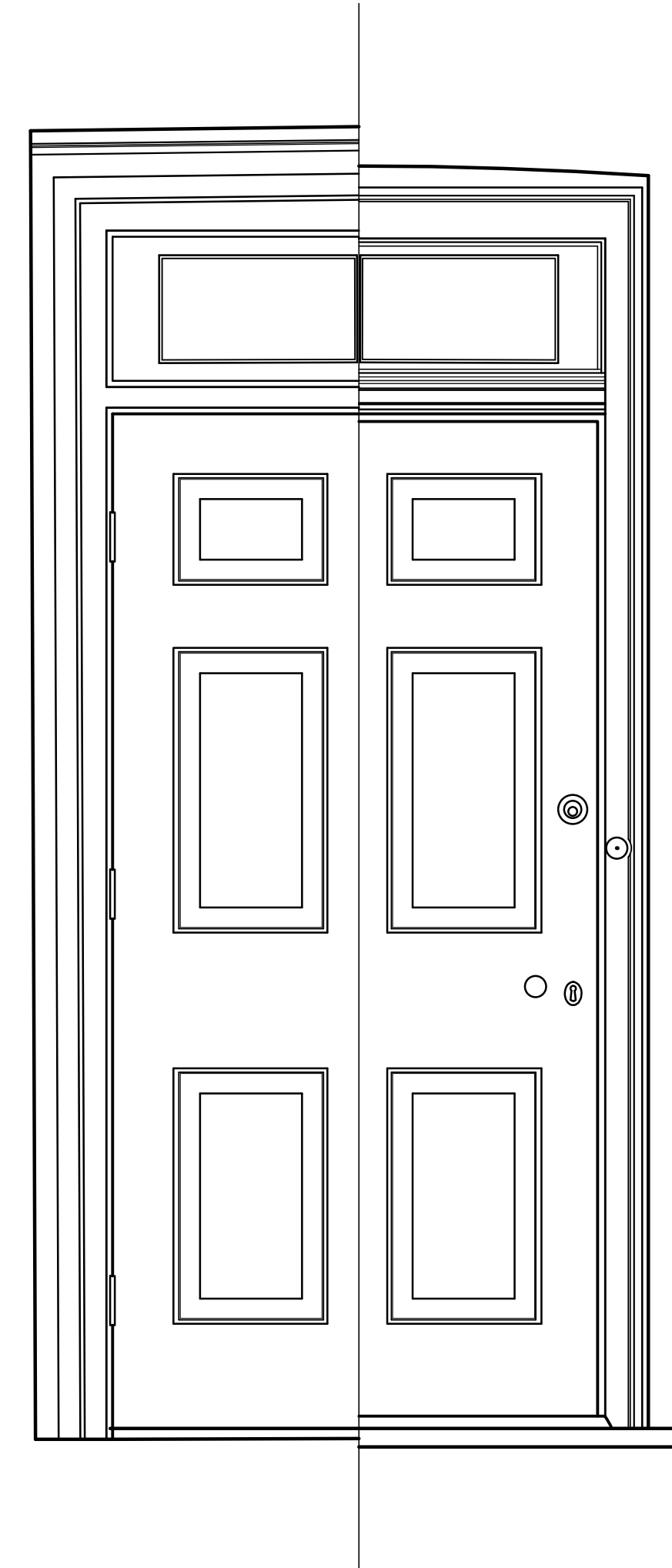
SOUTHWEST ENRTY DOOR
SCALE: 1" = 1' - 0"



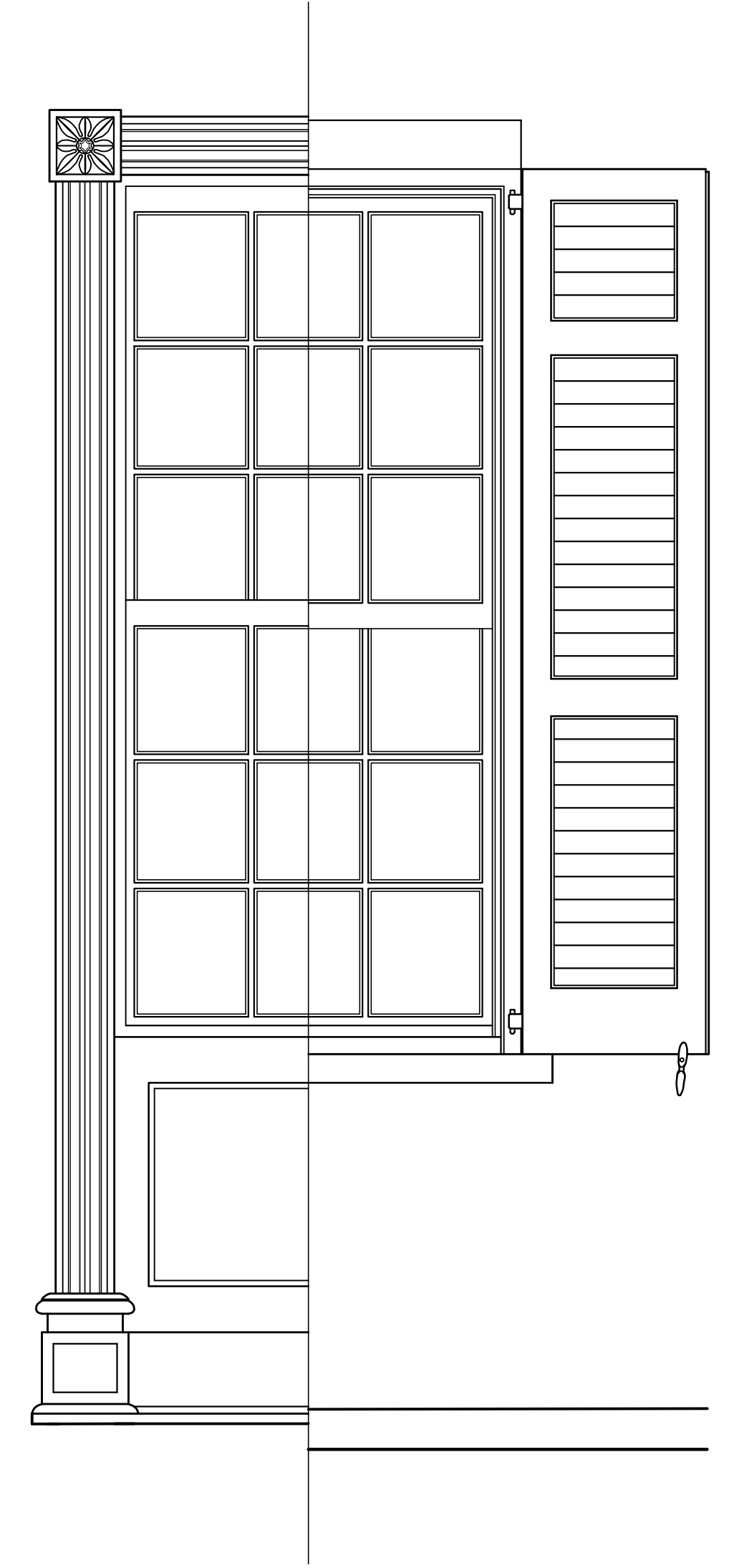
18TH C WINDOW
SCALE: 1" = 1' - 0"



ATTIC WINDOW
SCALE: 1" = 1' - 0"



NORTHEAST ENTRY DOOR
SCALE: 1" = 1' - 0"



19TH C WINDOW
SCALE: 1" = 1' - 0"

