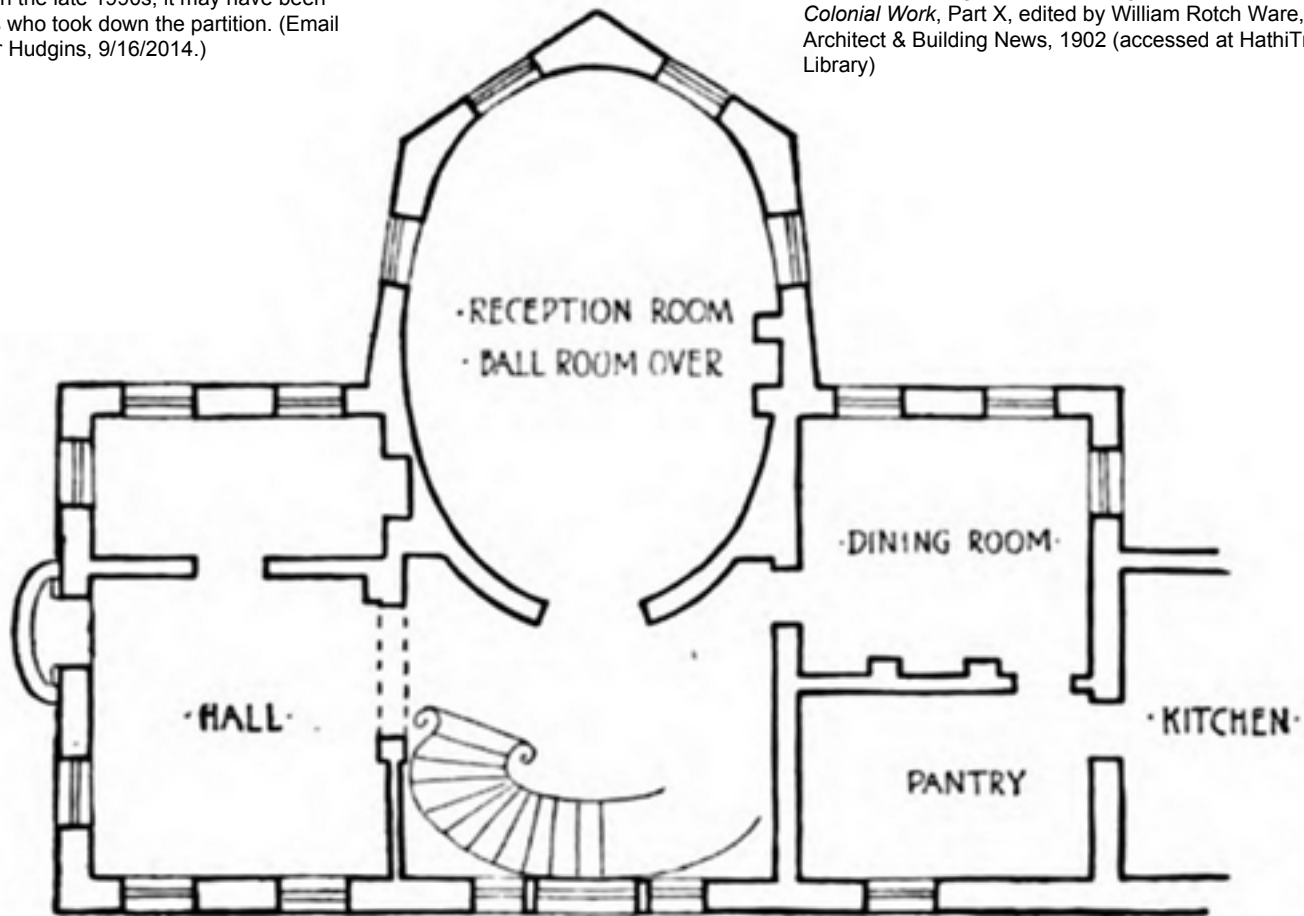


Shows partition in front reception room that HCF reinserted in the late 1990s; it may have been the Pelzers who took down the partition. (Email from Carter Hudgins, 9/16/2014.)

From: *"The Georgian Period" Being Measured Drawings of Colonial Work*, Part X, edited by William Rotch Ware, American Architect & Building News, 1902 (accessed at HathiTrust Digital Library)



Plan of the Nathaniel Russell House.