

Jennifer,

Attached are some documents that will help clarify the history of the site.

1. Sanborn maps from 1884, 1888, 1902, 1944. General observation regarding the SCEG building on Meeting – it appears that the rear addition behind 141 Meeting may have been constructed between 1888 and 1902. It was connected with a hyphen by the 1944 map. (from our site visit, it appears to have been heavily modified).
2. The 1872 Birds Eye map. This map was created before the 141 Meeting St structure was built (1876), but it appears that the building at 176 King existed at that time.
3. The 1852 Bridgens & Allen map. This map shows that in 1852, there were several structures along King Street where they do not exist now. (see the untitled folder).

From the Halsey Map, it looks like the buildings in this area were burned down in the fire of 1861, which explains the gaps along King Street. Photography didn't really become well used until the 1860s, so it is unlikely that we will be able to find a photo of the buildings on King Street.

Just wanted to share in case it would be helpful.

Thanks,
April



APRIL J. WOOD

MANAGER OF EASEMENTS AND TECHNICAL OUTREACH

843.805.6731

awood@historiccharleston.org

HISTORIC CHARLESTON FOUNDATION

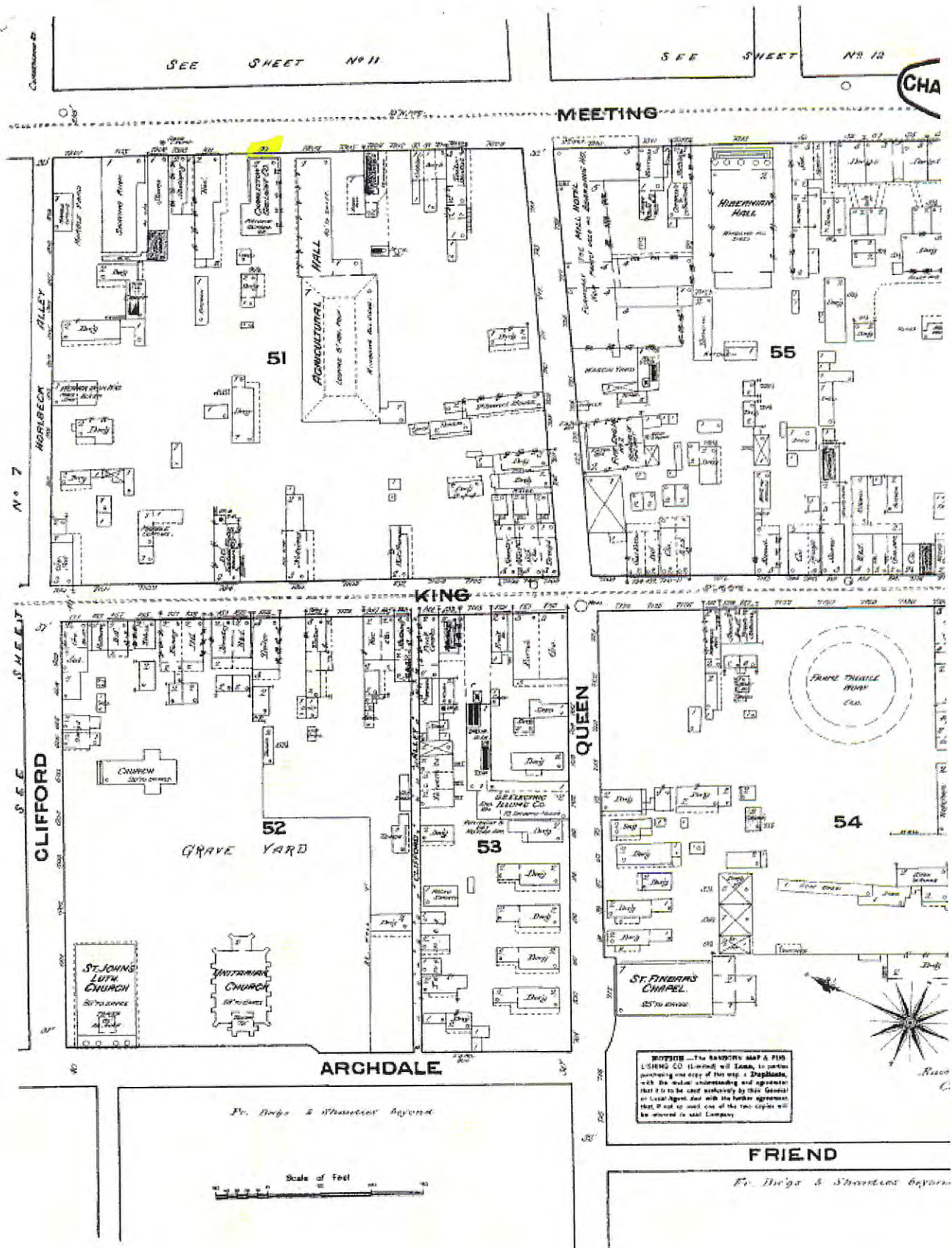
40 East Bay Street

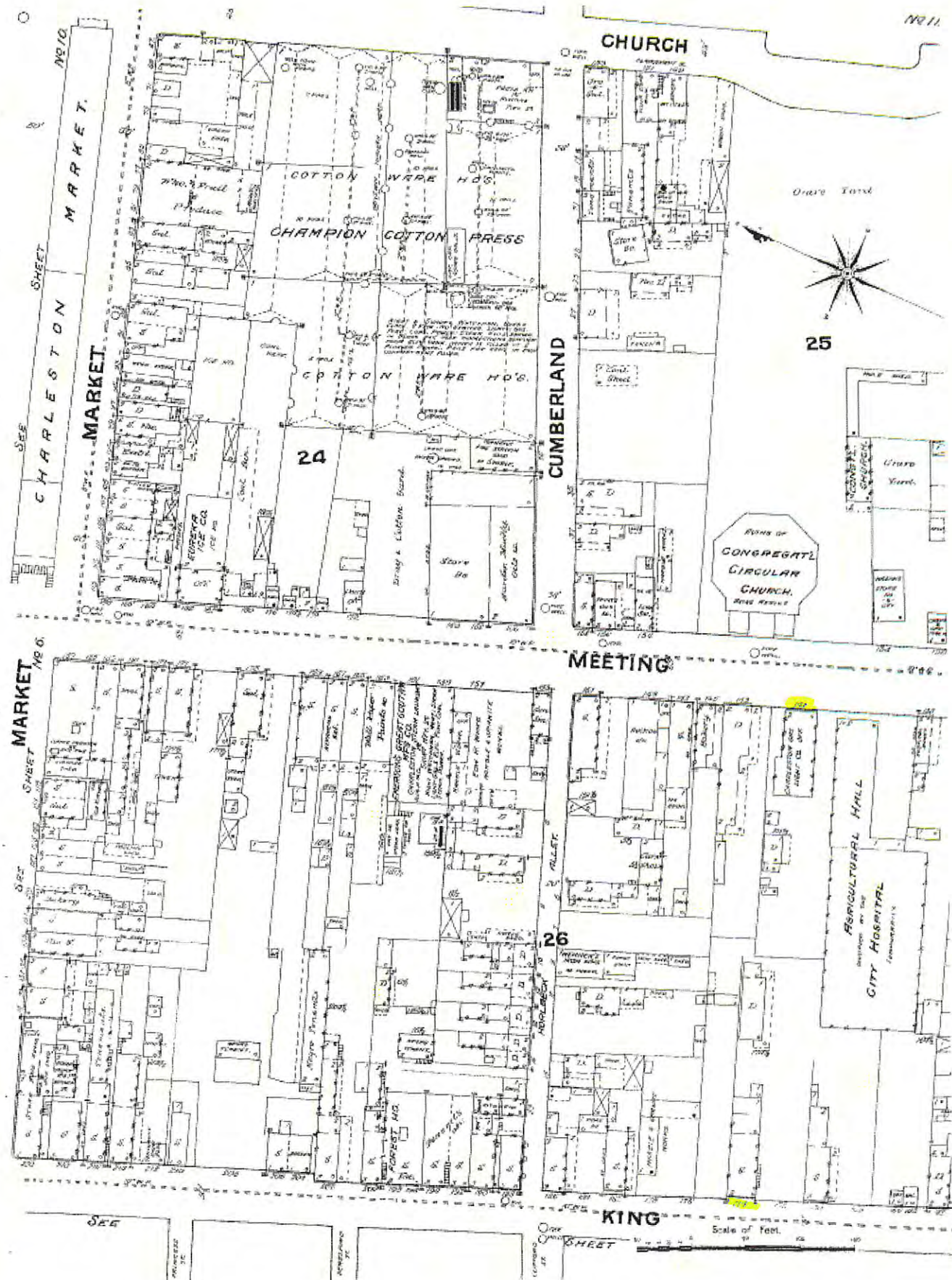
Charleston, SC 29401

www.HISTORICCHARLESTON.ORG

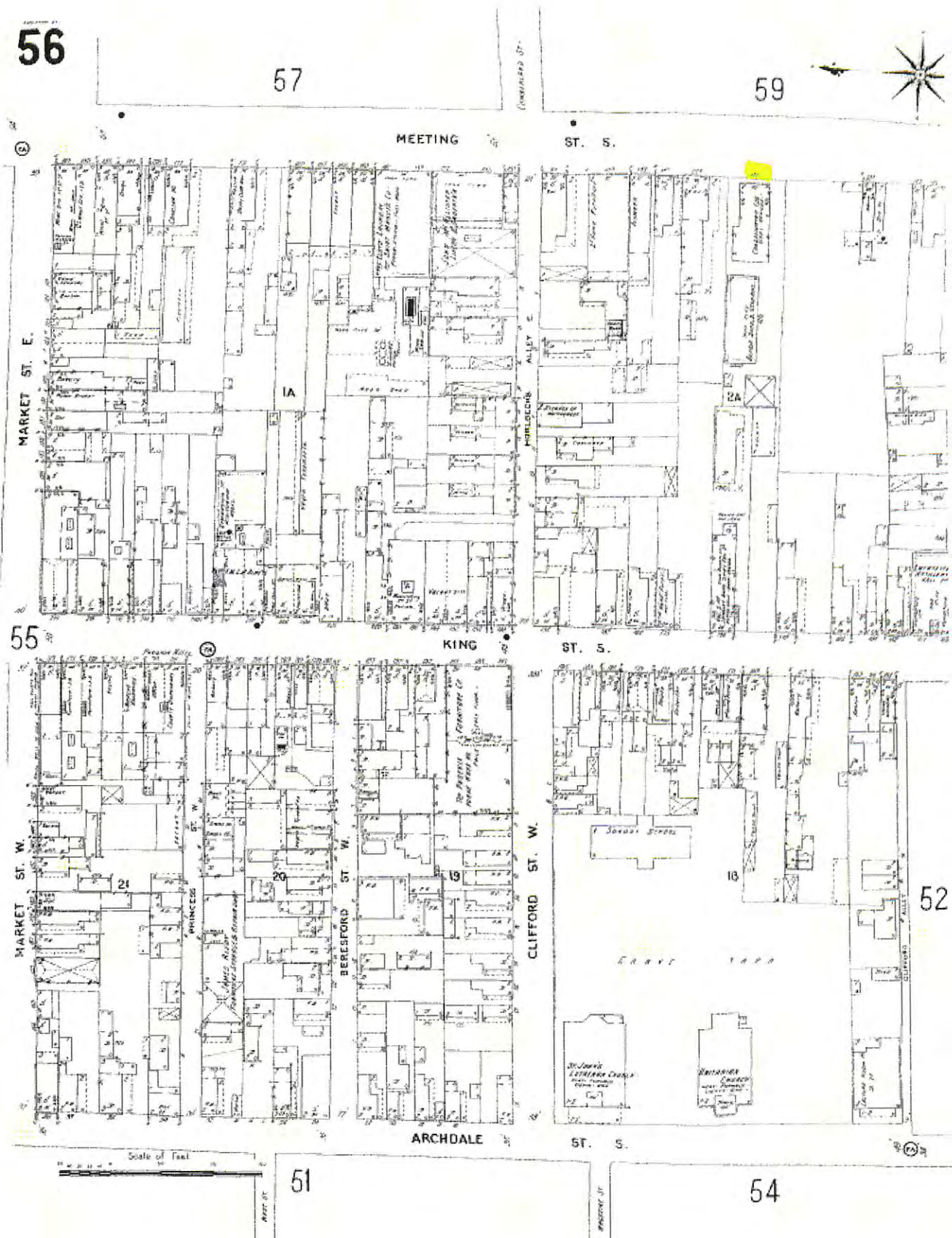
Find us on: [Facebook](#), [Twitter](#) and [Pinterest](#)

1884

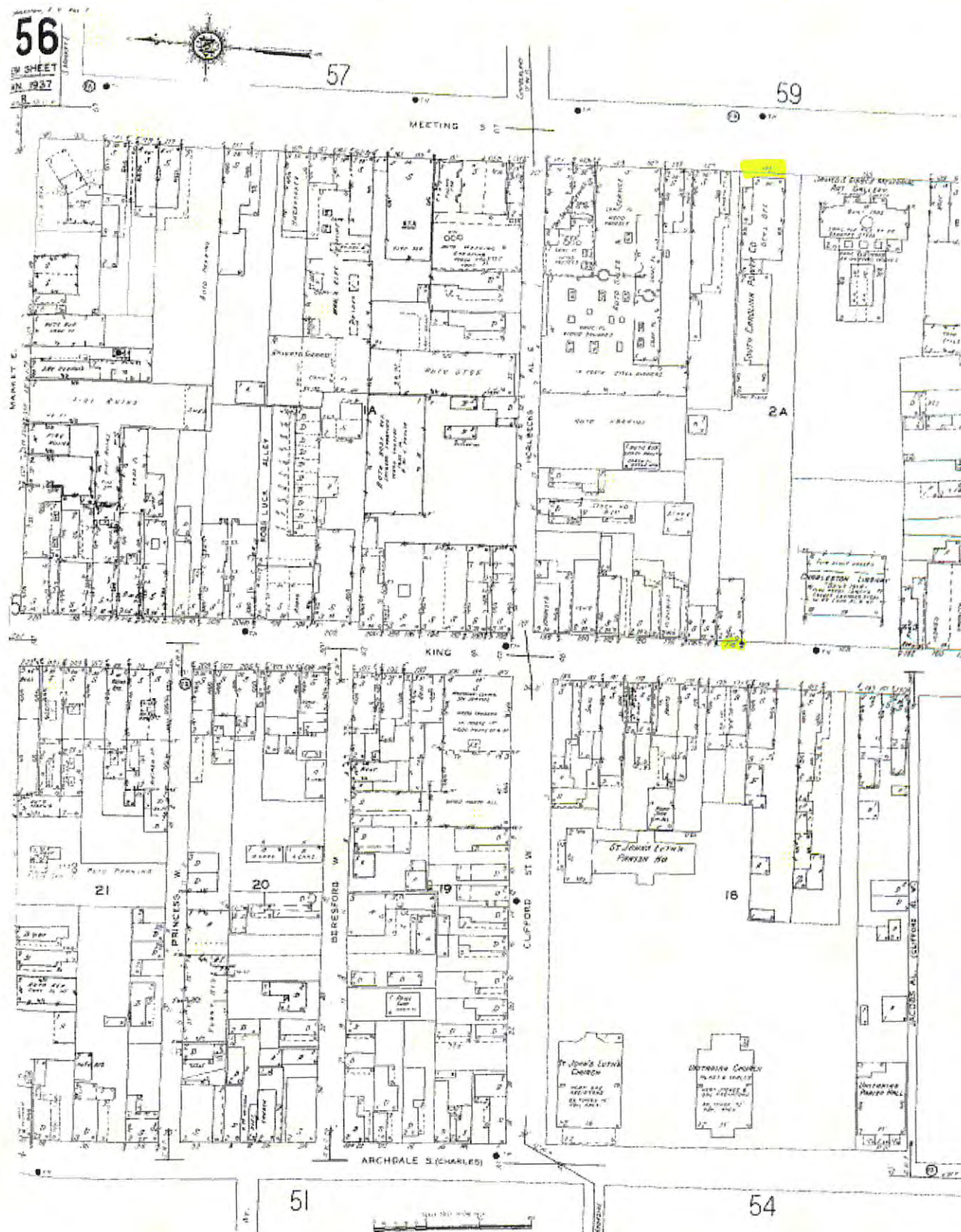




1902



1902-1944





QUEEN

KING

ICE

AND

88

42

73

34

