

Rehabilitation of 13 Porters Court in the Elliottborough neighborhood of Charleston, South Carolina

May 31, 2000

Index of Drawings

T1
Title Sheet

A1
Existing Floor Plans / New Floor Plans

A2
Existing Elevations

A3
New Elevations

E1
Electrical and Mechanical Floor Plans

Project Team:

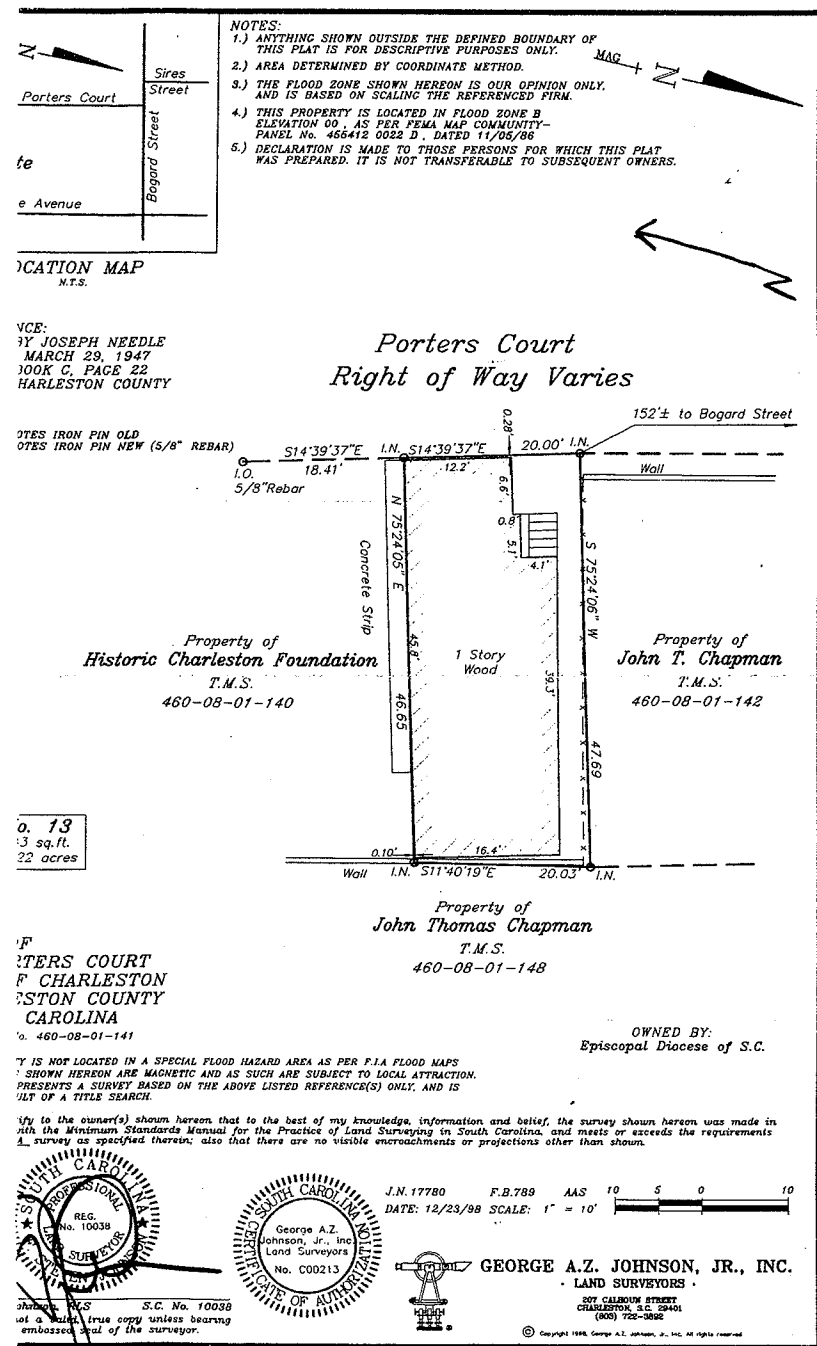
Historic Charleston Foundation
(Neighborhood Impact Initiative)

City of Charleston

Calvary Episcopal Church
(Episcopal Diocese)

Community Housing Development Organization

Dufford Young Architects



FINAL APPROVAL:
SEE NOTES ON THIS APPLICATION.

BOARD OF ARCHITECTURAL REVIEW

APPLICATION # SR-00-1055

☐ APPROVED:
☐ DENIED
☐ DEFERRED
☐ WITHDRAWN

☐ AS SUBMITTED
☒ WITH REVISIONS

☐ NEW CONST.
☐ REHABILITATION
☐ DEMOLITION

7.17.00
DATE

Eddie Bell
PRESERVATION OFFICER

THIS APPLICATION EXPIRES WITHIN ONE YEAR FOR DEMOLITIONS AND THREE YEARS FOR NEW CONSTRUCTION. EXP. DATE: 7.17.03

THIS APPROVAL DOES NOT CONSTITUTE APPROVAL BY OTHER CITY BOARDS OR DEPARTMENTS.

Copyright © 2000
DUFFORD YOUNG ARCHITECTS, LLC

87C Hasell Street
Charleston, S.C. 29401
803 577 0737

All rights reserved.
The reproduction or use
of this drawing or the
design herein without the
written consent of the
Architect is prohibited.

These documents are limited
in scope. Architect warrants
all responsibility and liability
for failure to follow these
plans and design. They
contain or provide which
are from other sources to
obtain and follow the
architect's guidance with
respect to any
requirements, errors,
omissions, ambiguities or
conflicts which are alleged.

D Y A

DUFFORD YOUNG ARCHITECTS

87C Hasell Street
Charleston, SC 29401
803 577 0737

13 PORTERS COURT

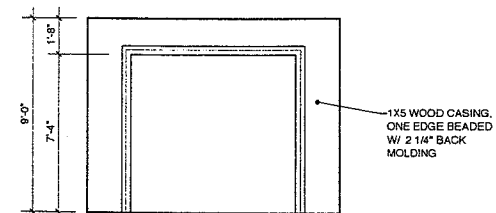
CHARLESTON, S.C.

date
05.31.00

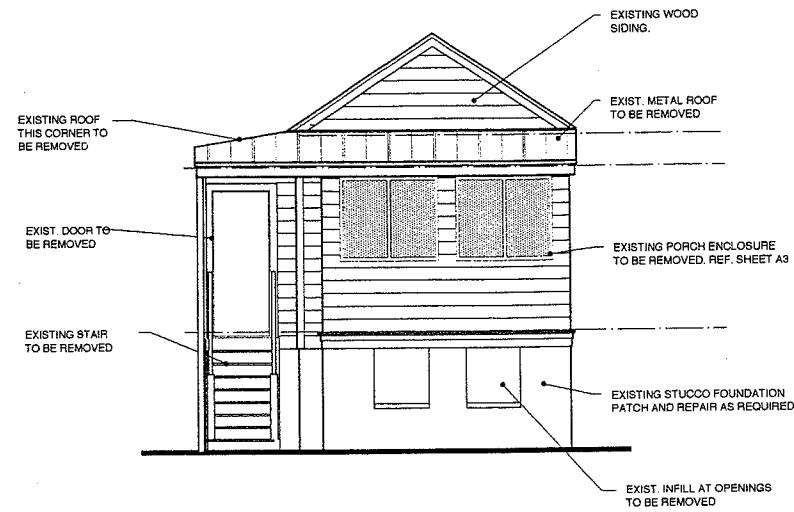
drawn
JLY

comm. no.

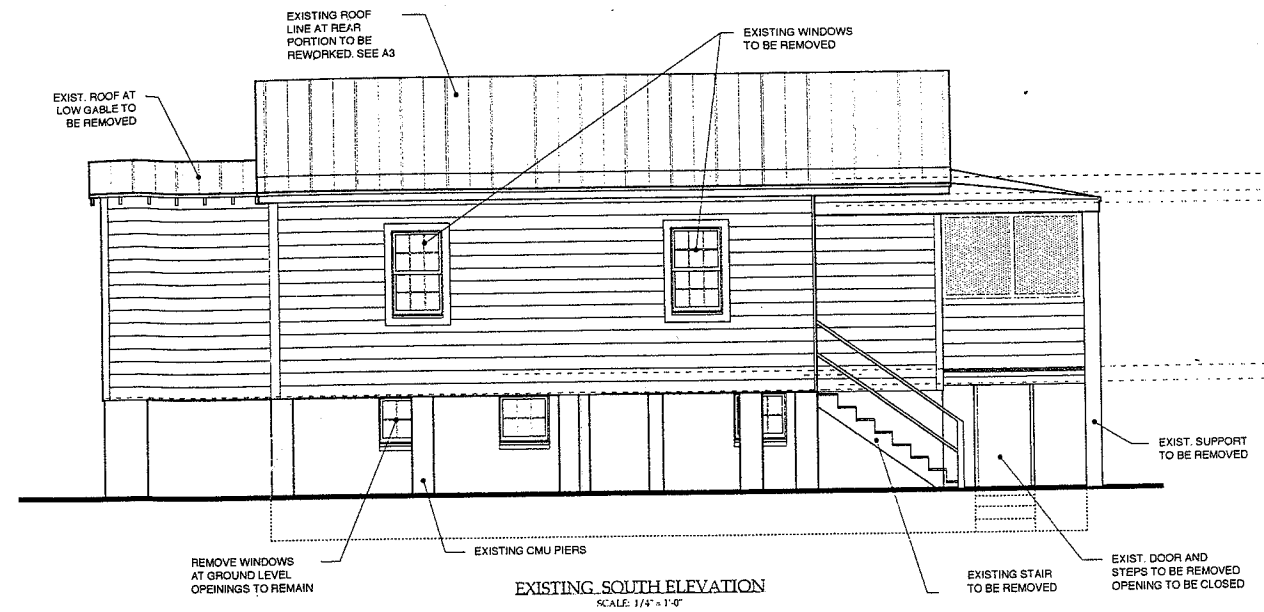
revisions



revisions

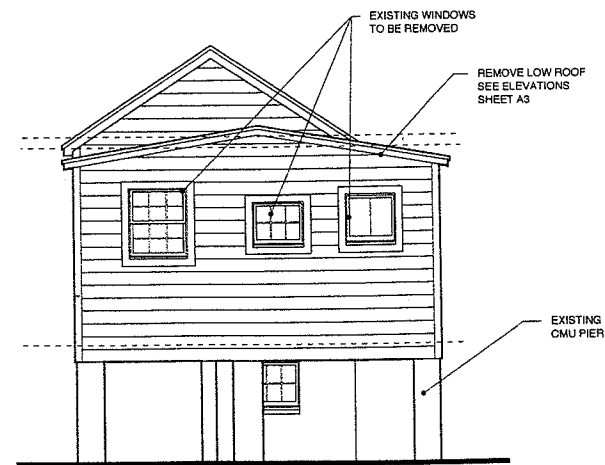


EXISTING EAST ELEVATION
SCALE: 1/4" = 1'-0"

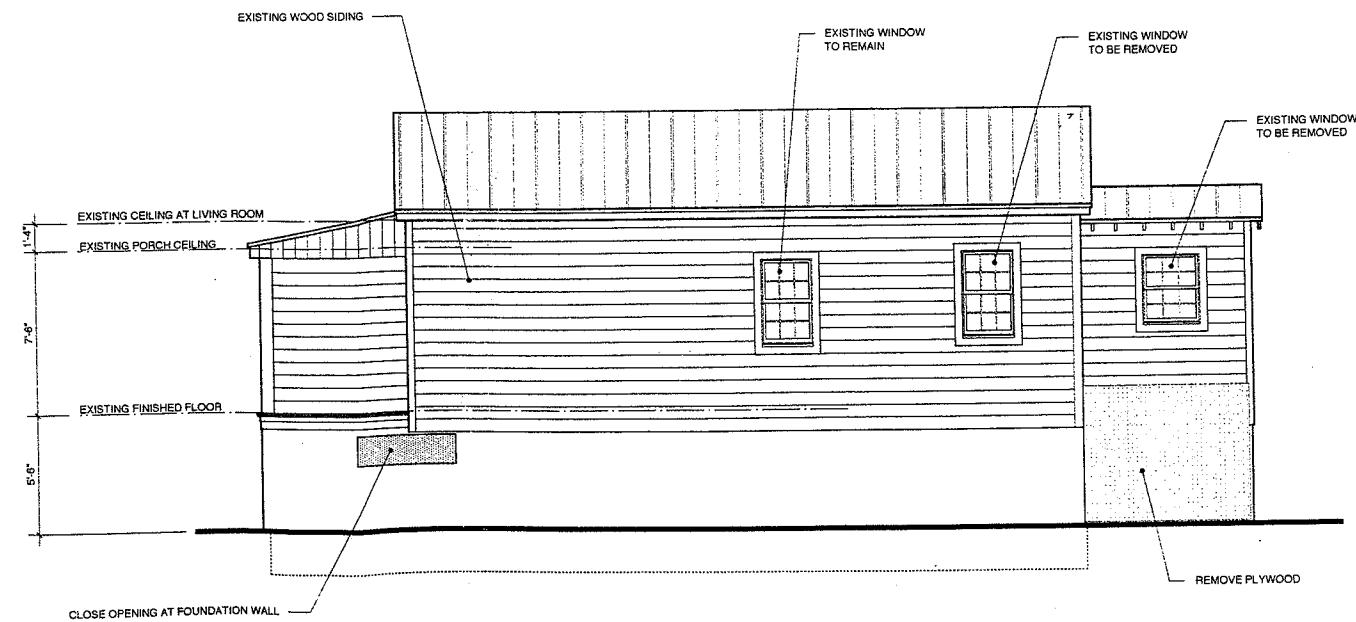


EXISTING SOUTH ELEVATION
SCALE: 1/4" = 1'-0"

NOTE: SEE SHEETS A1 AND A3 FOR COMPLETE DEMOLITION



EXISTING WEST ELEVATION
SCALE: 1/4" = 1'-0"



NEW NORTH ELEVATION
SCALE: 1/4" = 1'-0"

DUFFORD YOUNG

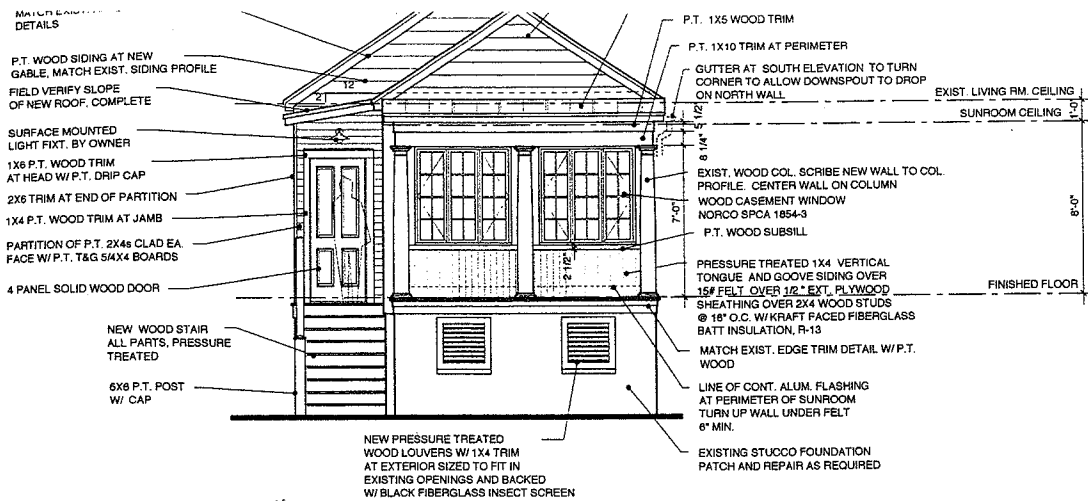
87C Hasell Street
Charleston, SC 29401
803 577 0737

13 PORTER'S
CHARLESTON

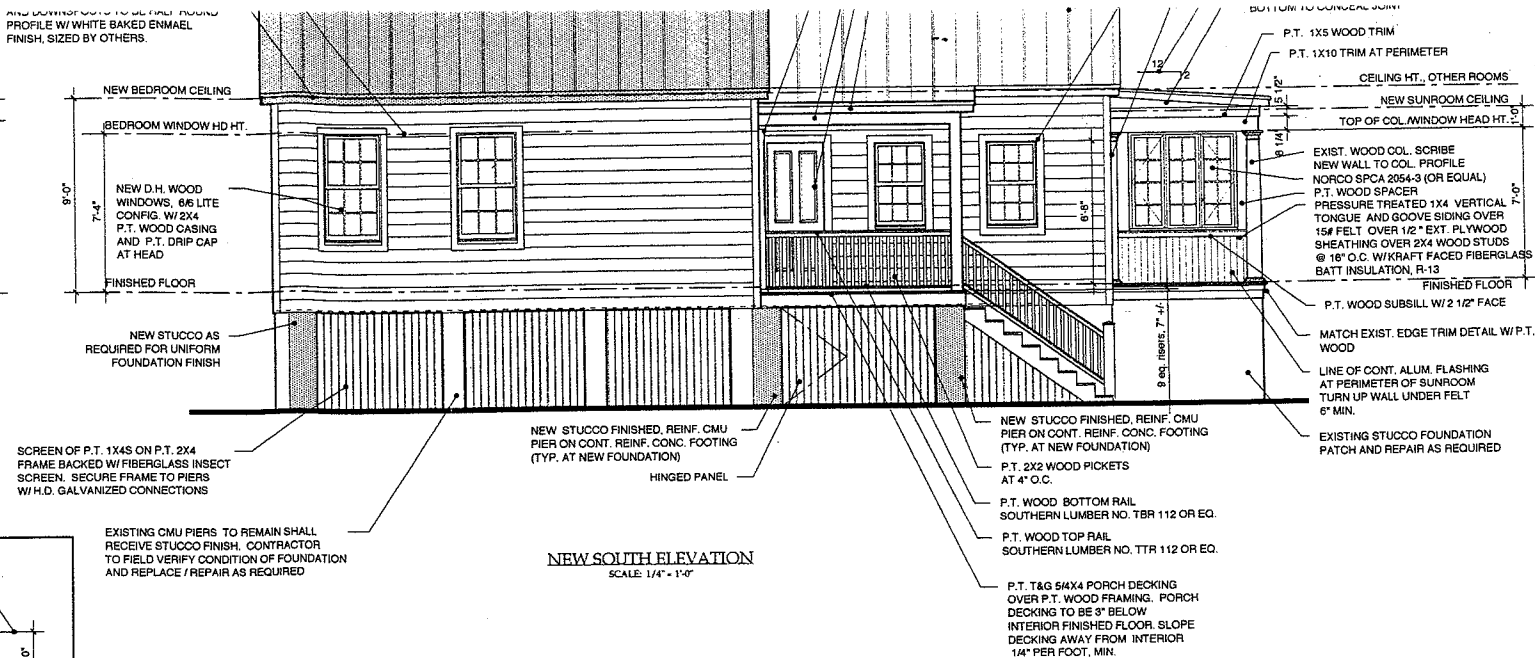
date
05-31-00

drawn
amj, jly

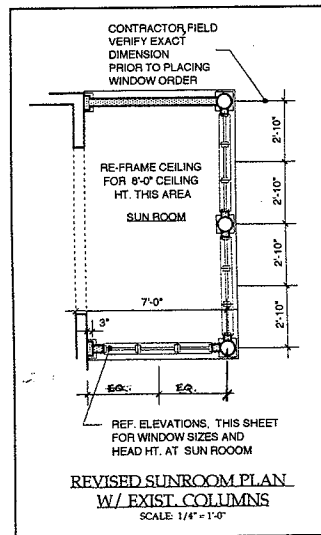
comm. no.



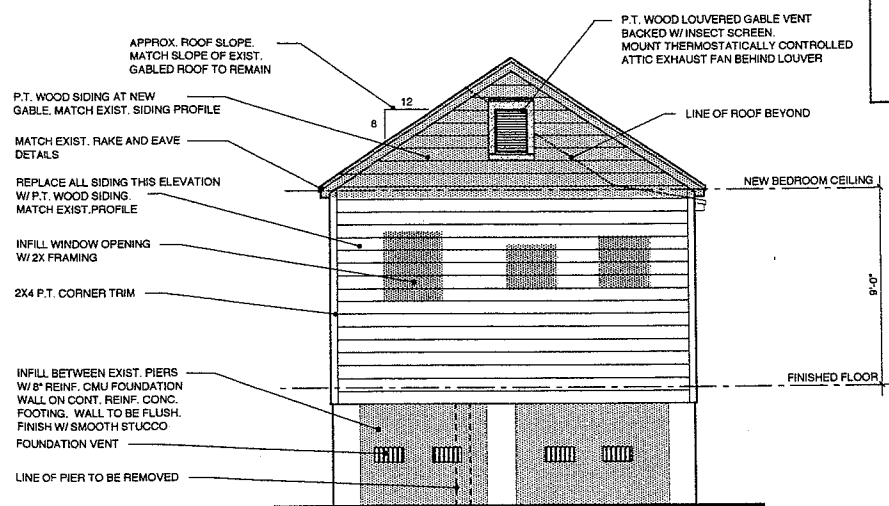
NEW EAST ELEVATION
SCALE: 1/4" = 1'-0"



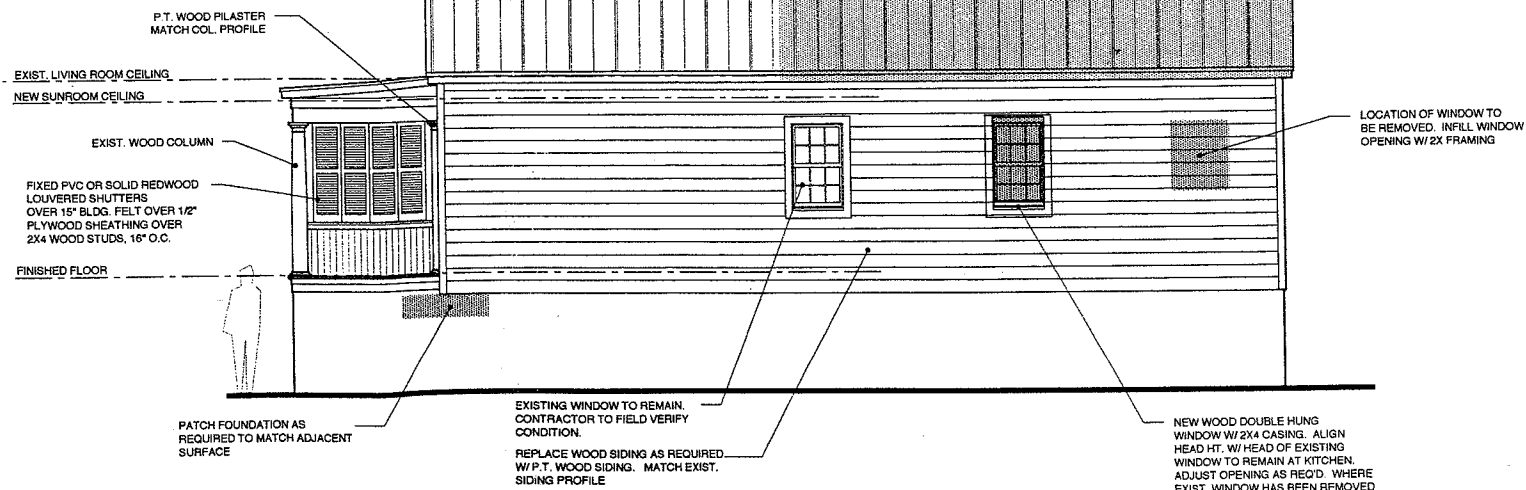
NEW SOUTH ELEVATION
SCALE: 1/4" = 1'-0"



REVISED SUNROOM PLAN
W/ EXIST. COLUMNS
SCALE: 1/4" = 1'-0"



NEW WEST ELEVATION
SCALE: 1/4" = 1'-0"



NEW NORTH ELEVATION
SCALE: 1/4" = 1'-0"

NOTE: THIS SHEET SHALL REPLACE SHEET A-3 IN THE ORIGINAL SET OF "13 PORTERS COURT" DOCUMENTS, DATED 5/31/00. EXISTING COLUMNS REVEALED SHALL REMAIN AS PART OF SUNROOM ENCLOSURE AS DIRECTED BY HISTORIC CHARLESTON FOUNDATION, EASEMENTHOLDER. SUNROOM ENCLOSURE HAS BEEN REVISED AS PER THE ELEVATIONS AND PARTIAL FLOOR PLAN DRAWINGS ON THIS SHEET.

DUFFORD YOUNG A

87C Hasell Street
Charleston, SC 29401
803 577 0737

13 PORTER'S C
CHARLESTON.

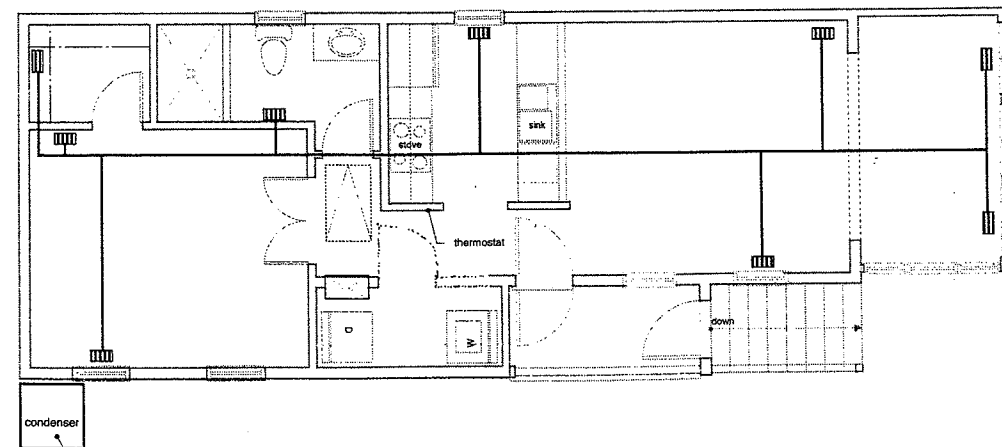
date
05/31/00

drawn
JLY

comm. no.

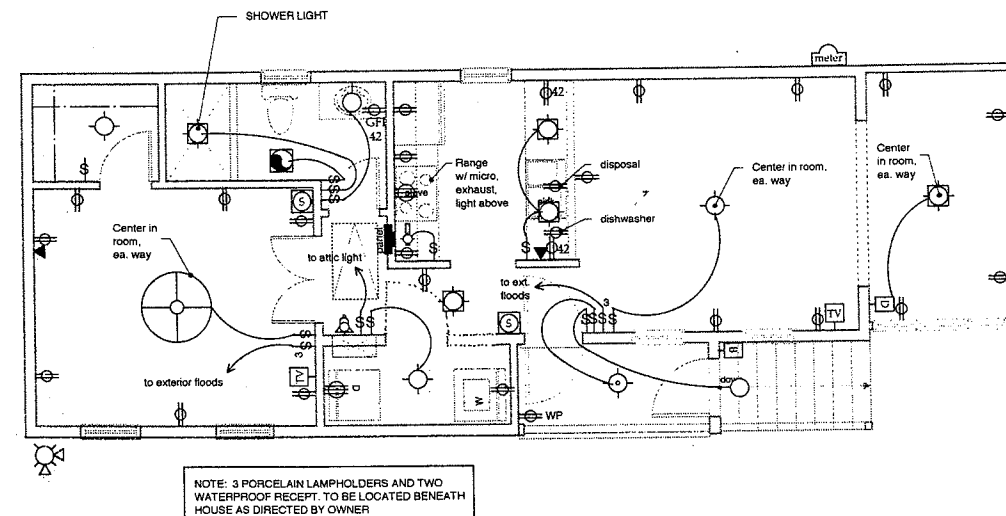
revisions
07/05/00

NEW ELEVATION



FIRST FLOOR MECHANICAL PLAN
SCALE: 1/4" = 1'-0"

1. Ducts to be sized by mechanical contractor.
2. First floor ductwork located in crawl space with floor mounted registers.
3. Type and size of HVAC system to be determined by owner and mechanical contractor.
4. Air handler to be located in crawl space. Place to maximize usable storage area in crawl space.



FIRST FLOOR ELECTRICAL PLAN
SCALE: 1/4" = 1'-0"
(for fixture, switch, & outlet locations only)

- ceiling mounted recessed light fixture
- wall mounted light fixture
- push button
- doorbell chimes
- soffit mounted security light
- single pole switch
- 3 pole switch
- dimmer switch
- receptical (110V)
- receptical, half-hot (110V)
- receptical (220V)
- ceiling mounted exhaust fan / light
- ceiling mounted exhaust fan
- telephone outlet
- television cable
- electric meter
- electric panel
- ceiling fan

Receptical Notes:
42 = 2 of inches 3/4
4 = quadruplex recept.
CFI = ground fault int.
WP = water-proof, ext.

DUFFORD YOU
87C Hasell Street
Charleston, SC 29405
803 577 0737

13 PORTE
CHARL

date
05/31/00
drawn
and j. jly
comm. no.

revisions
Classical Design