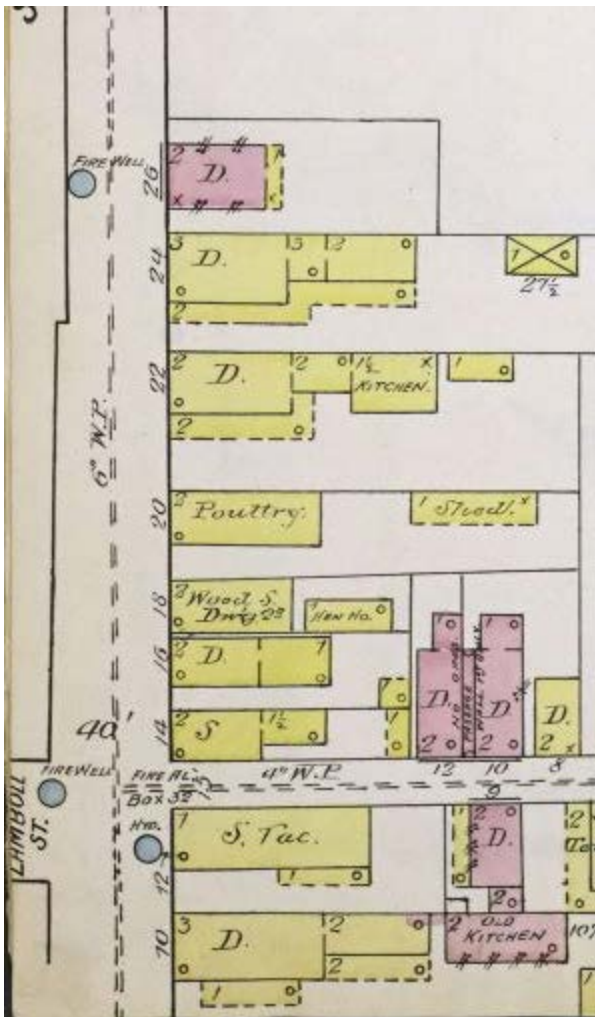


**From:** [Kevin R. Eberle](#)  
**To:** [Emmons, Karen](#)  
**Subject:** RE: 11 Lamboll  
**Date:** Tuesday, October 27, 2020 3:17:36 PM  
**Attachments:** [image004.png](#)

---

It is very likely looking north on King from Lamboll. More info to follow.

This is the 1888 Sanborn map showing the east side of King Street at the intersection of Lamboll. The wooden houses seem to be the small wooden houses from 14-20 King with a slight view of 22 beyond.



---

**From:** Emmons, Karen <[kemmons@historiccharleston.org](mailto:kemmons@historiccharleston.org)>  
**Sent:** Tuesday, October 27, 2020 2:45 PM  
**To:** Kevin R. Eberle <[keberle@charlestonlaw.edu](mailto:keberle@charlestonlaw.edu)>  
**Subject:** RE: 11 Lamboll

**\*External Email\* – Use Caution with Links/Attachments**

Thanks, as always, for sending the 2 photos. I wonder if the mystery photo was on Logan or

Beaufain Street?



HISTORIC CHARLESTON FOUNDATION

**KAREN BRICKMAN EMMONS**

Archivist/Librarian

[kemmons@historiccharleston.org](mailto:kemmons@historiccharleston.org)

843.724.8490

[Donate](#). [Engage](#). [Explore](#).



---

**From:** Kevin R. Eberle <[keberle@charlestonlaw.edu](mailto:keberle@charlestonlaw.edu)>  
**Sent:** Tuesday, October 27, 2020 9:14 AM  
**To:** Emmons, Karen <[kemmons@historiccharleston.org](mailto:kemmons@historiccharleston.org)>  
**Subject:** RE: 11 Lamboll

The owner of those Lamboll Street pics shared these this morning.

One is clearly looking south on King Street toward South Battery from Lamboll Street. The three-story house on the corner lost a floor later but is still there.

The other photo is a mystery right now. It doesn't really look like the Lamboll Street neighborhood, but there are not any good clues that pop out.

---

**From:** Emmons, Karen <[kemmons@historiccharleston.org](mailto:kemmons@historiccharleston.org)>  
**Sent:** Monday, October 26, 2020 3:53 PM  
**To:** Kevin R. Eberle <[keberle@charlestonlaw.edu](mailto:keberle@charlestonlaw.edu)>  
**Subject:** RE: 11 Lamboll

**\*External Email\* – Use Caution with Links/Attachments**

Any details to go along with the photos in the post? Date of photos, if not 1893ish? Was it in the poster's family? Etc.?

I'll have to walk by there this week. Is it still there?



HISTORIC CHARLESTON FOUNDATION

**KAREN BRICKMAN EMMONS**

Archivist/Librarian

[kemmons@historiccharleston.org](mailto:kemmons@historiccharleston.org)

843.724.8490

[Donate](#). [Engage](#). [Explore](#).



---

**From:** Kevin R. Eberle <[keberle@charlestonlaw.edu](mailto:keberle@charlestonlaw.edu)>  
**Sent:** Monday, October 26, 2020 2:40 PM  
**To:** Emmons, Karen <[kemmons@historiccharleston.org](mailto:kemmons@historiccharleston.org)>  
**Subject:** 11 Lamboll

A new member of the Charleston history Facebook group just shared these two great photos of 11 Lamboll (SE corner of King). I've sent her a message to ask for high res scans for the HCF collection.

The house was built in 1893 (there was a short blurb about how the neat cottage with its steep tower was an improvement over the derelict shack that had been there for so long).

The information transmitted is intended only for the person or entity to which it is addressed and may contain confidential and/or legally privileged material. Any review, re-transmission, dissemination or other use of this information, directly or indirectly, by persons or entities other than the intended recipient is prohibited. If you are not the intended recipient please contact the sender and delete the material from all computers in which it resides. Internet communications cannot be guaranteed to be secure or error-free as information could be intercepted, corrupted, lost, destroyed, arrive late, incomplete, or contain viruses. Therefore, we do not accept responsibility for any errors or omissions that are present in this message, or any attachment, that have arisen as a result of e-mail transmission. If verification is required, please request a hard-copy version or contact us by phone. Any views or opinions presented are solely those of the author and do not necessarily represent those of the Charleston School of Law.