



The Thomas Rose House

59 Church Street
Charleston, South Carolina

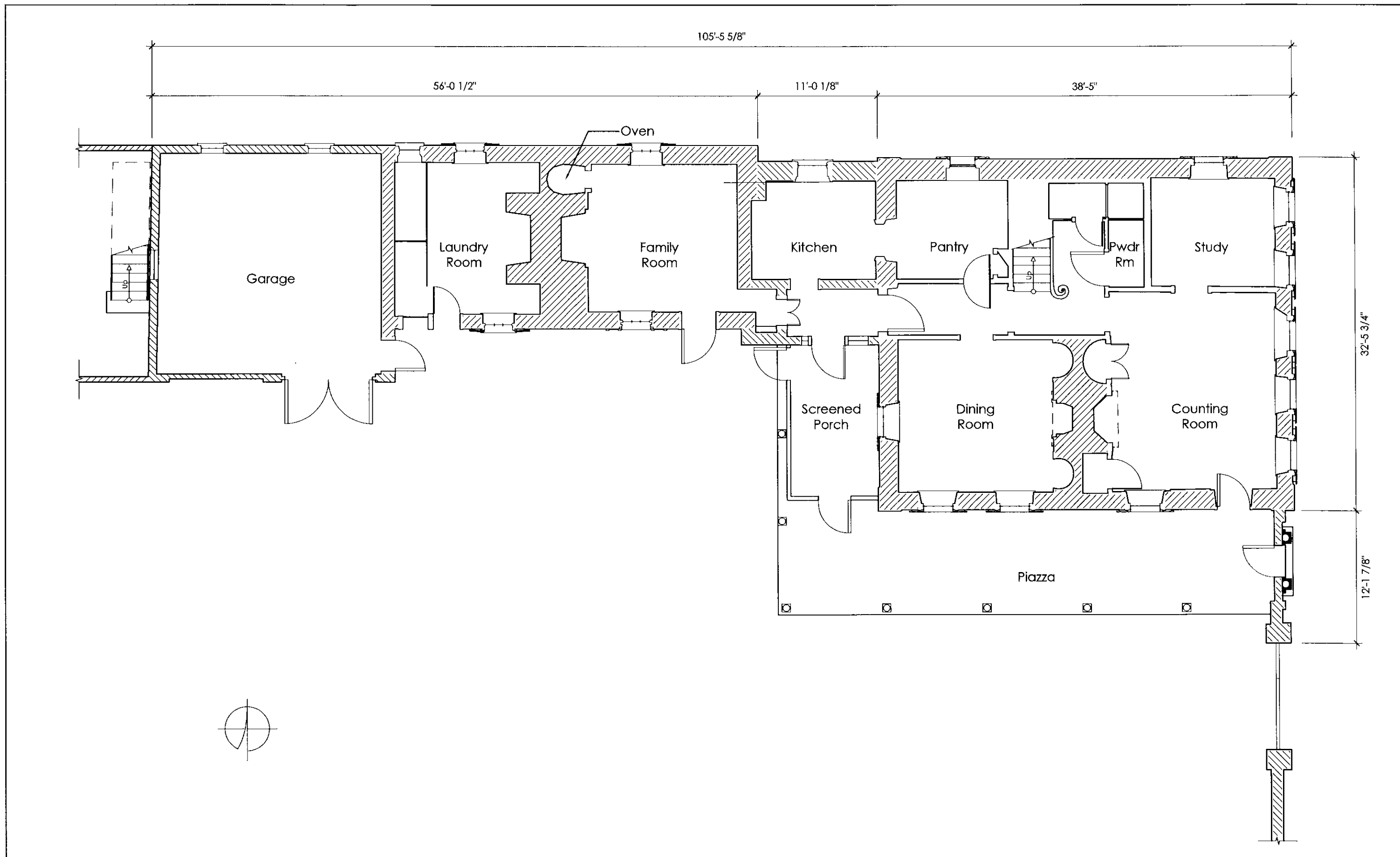
6 August 2015

Meredith Wilson
Clemson University/College of Charleston
Masters of Science in Historic Preservation
Class of 2016

Contents of Drawing Set

- | | |
|------|--------------------------|
| I. | First Floor Plan |
| II. | Second Floor Plan |
| III. | Third Floor Plan |
| IV. | East Exterior Elevation |
| V. | South Exterior Elevation |
| VI. | Fenestration Details |



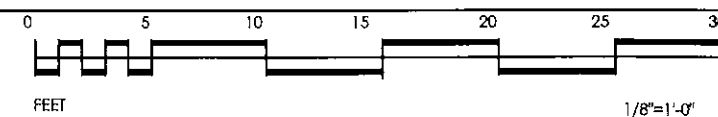


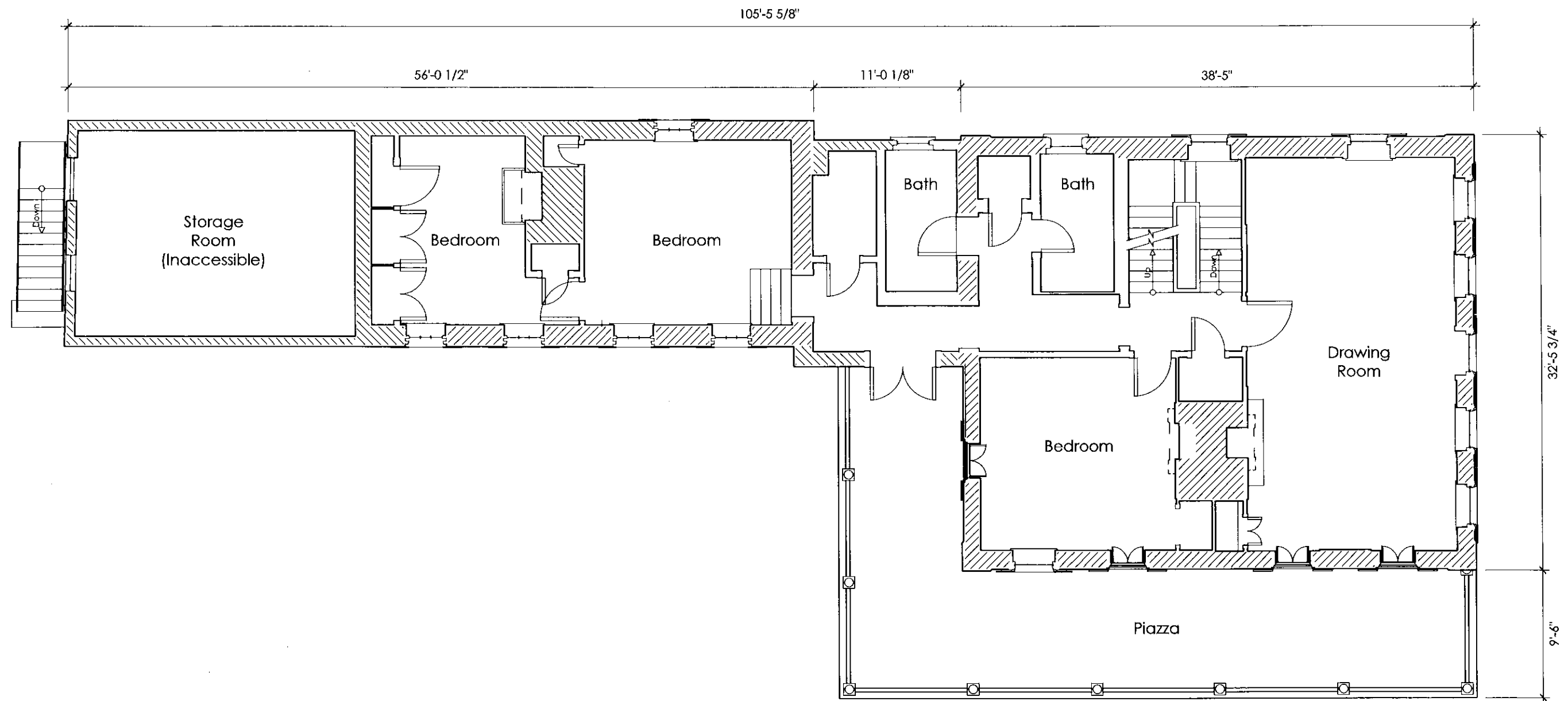
DRAWN BY: Meredith Wilson

THOMAS ROSE HOUSE - FIRST FLOOR PLAN

1/8"=1'-0"

1:96



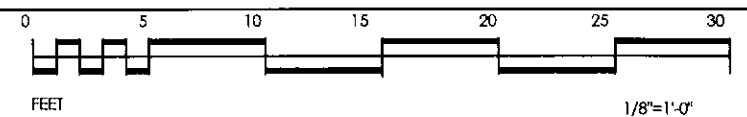


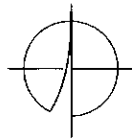
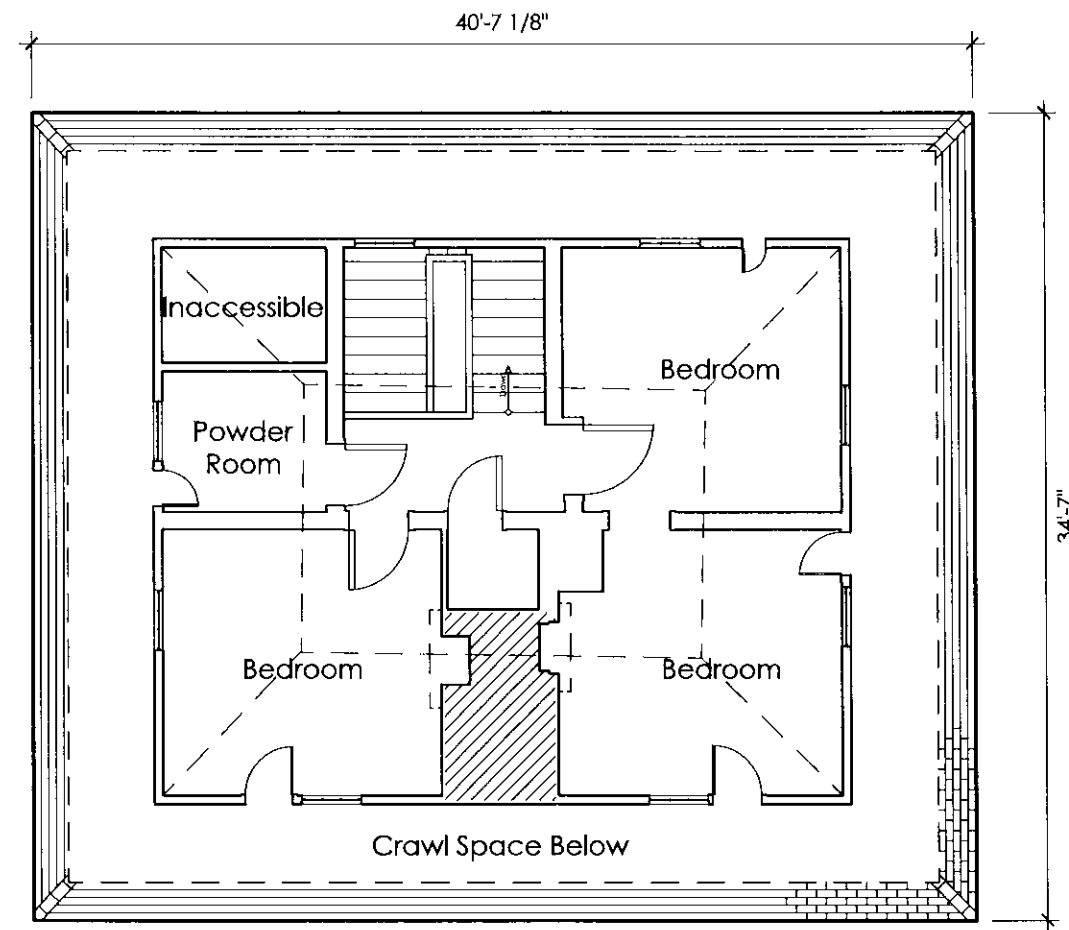
DRAWN BY: Meredith Wilson

THOMAS ROSE HOUSE - SECOND FLOOR PLAN

1/8"=1'-0"

1:96

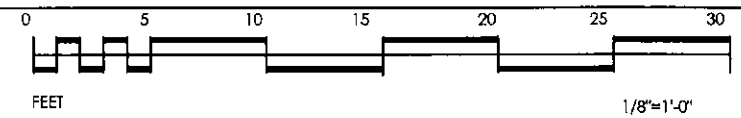




DRAWN BY: Meredith Wilson

THOMAS ROSE HOUSE - THIRD FLOOR PLAN

1/8"=1'-0" 1:96





NOTE ON MEASUREMENTS

Roof height and slope, as well as dimensions for the dormers, were extrapolated from the 1929 Simons and Lapham drawings.



NOTE ON MEASUREMENTS

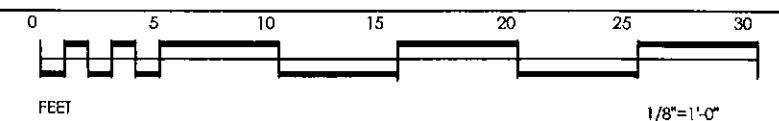
Roof height and slope, as well as dimensions for the dormers, were extrapolated from the 1929 Simons and Lapham drawings. The metal sheets of the standing seam metal roof were estimated to be 1'6" in width with a 1" seam.

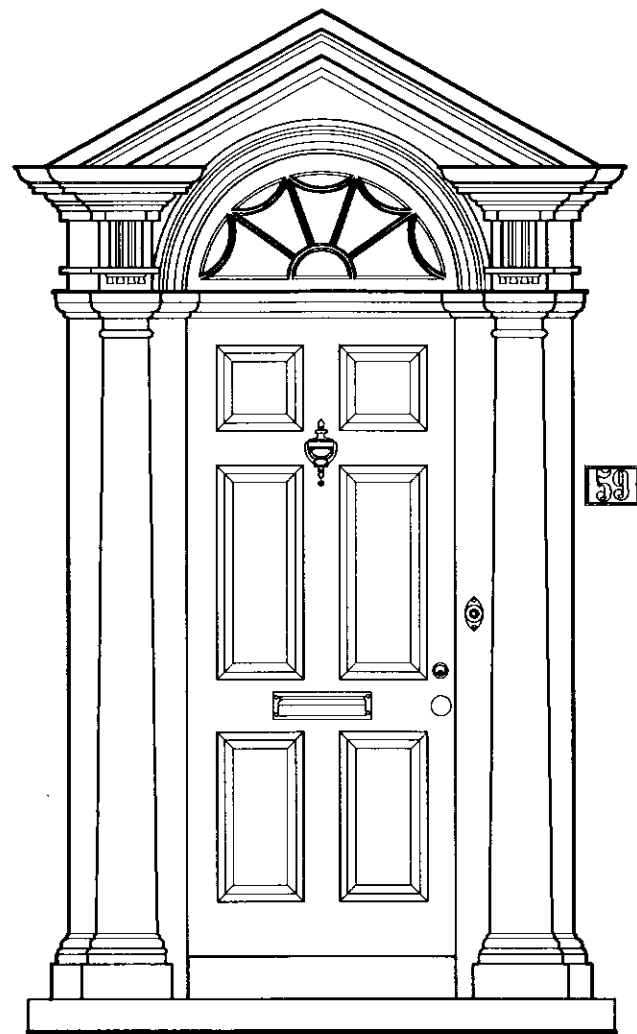
DRAWN BY: Meredith Wilson

THOMAS ROSE HOUSE - SOUTH EXTERIOR ELEVATION

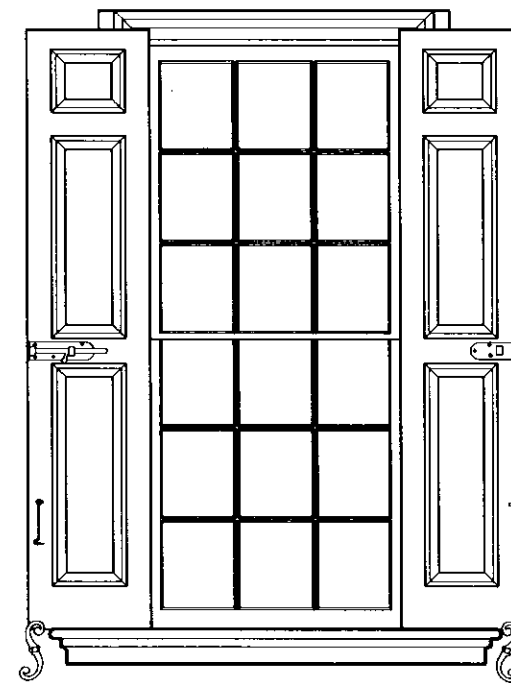
1/8"=1'-0"

1:96

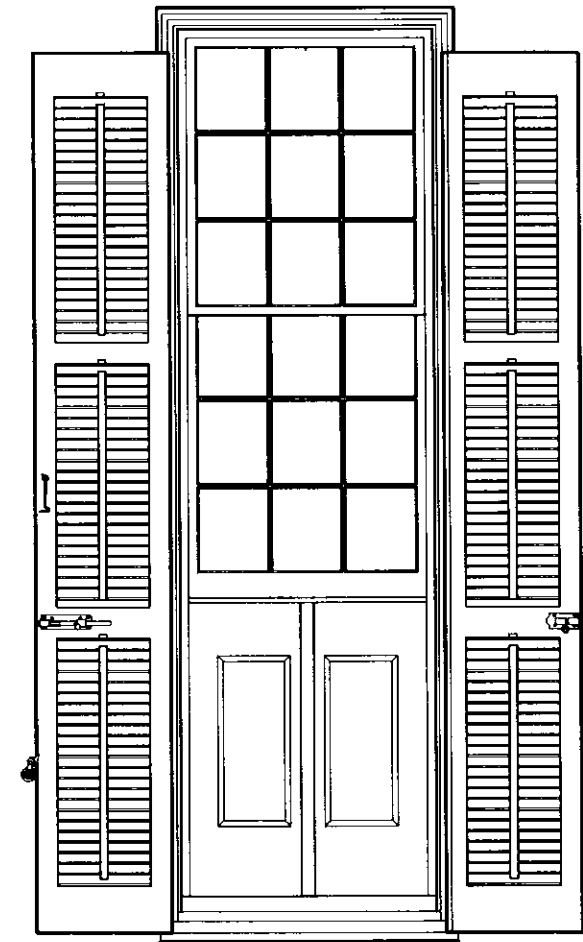




Piazza Screen Detail



First Floor Window
East Facade



Second Floor Jib Door
South Facade