

Conservation Treatment Report

Date: 11 February 2025

Owner/Agent: Historic Charleston Foundation Collection/
American Revolution Institute of The Society of the Cincinnati

Artist: Lieutenant William Elliot

Title/Description: *Attack on Fort Moultrie*

Materials: oil on canvas

Dimensions:
(H x W x D)

Before Treatment Condition Summary

Treatment was required to repair a sharp dent in the upper right quadrant of the picture and to stabilize lifting paint along the left and right edges. A moderate layer of surface grime dulled the picture overall.



Before Treatment – Normal lighting



After Treatment – Normal lighting

Treatment

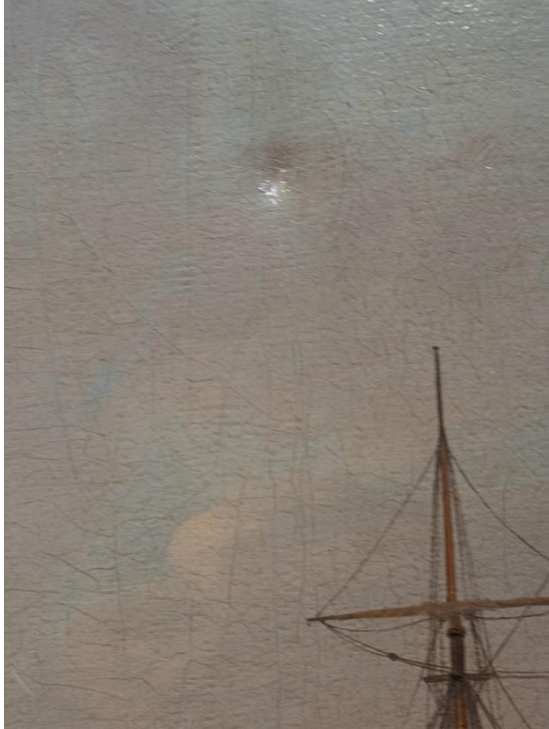
The framed painting was placed upright on an easel. Paper tape covering the edges of the stretcher was removed, working around existing labels, to access large staples securing the painting in the frame. The staples securing were carefully pulled away from the stretcher, leaving them in the frame to re-use later.

The painting was placed face up on a flat surface and the canvas was supported from the reverse. Isinglass adhesive, 5% concentration in distilled water, was wicked into raised cracks and beneath areas of lifting paint at the left and right edges. Lifted paint was relaxed and set down through silicone-coated mylar using a heated spatula and gentle finger pressure.

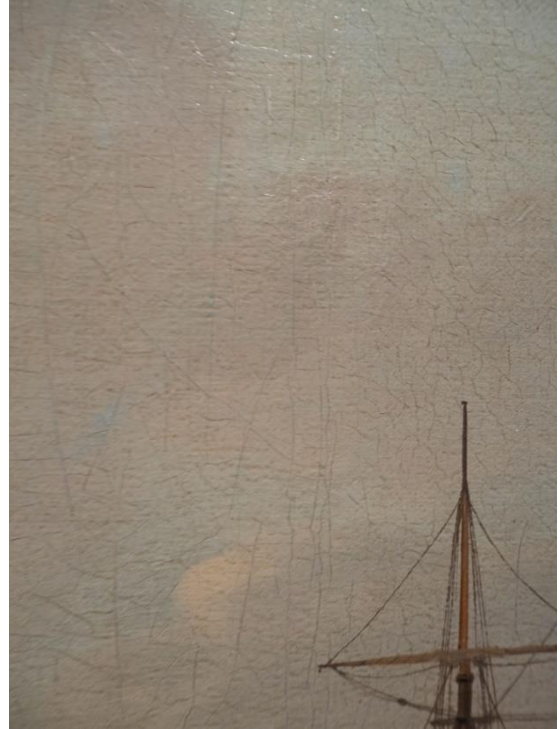
Isinglass adhesive was also wicked into cracks surrounding the dent at upper right to stabilize insecure paint in this area. The painting was placed face down on a smooth, padded surface. The reverse was cleaned of loose dust and dirt using stiff brush. In the area of the dent, the canvas was gently humidified using dampened blotter paper and slowly relaxed using a heated spatula. Heat and moisture were applied intermittently to relax the canvas and glue lining adhesive; gentle pressure was used to reduce the dent and coax the surrounding canvas into plane. The painting was then placed on the easel, and working from the front and back, lifted paint surrounding the dent was set down using a

heated spatula. Due to the particularly sharp nature of the original damage, a small depression in the paint remained in the center of the dented area.

The varnished paint surface was cleaned using cotton swabs and a 1% solution of sodium citrate in distilled water. The cleaning solution was cleared using swabs and distilled water. An area of loss near the lower left edge was filled using Modostuc, a fine putty of calcium carbonate in a poly(vinyl-acetate) binder. The small depression remaining in the area of the dent was filled with Cosmoloid 80H, a clear microcrystalline wax. Both areas, along with two areas of discolored retouching near the upper left corner, were inpainted with Gamblin Conservation Colors (pure pigments bound in synthetic urea-aldehyde resin). The painting was re-secured into the frame using the existing staples.



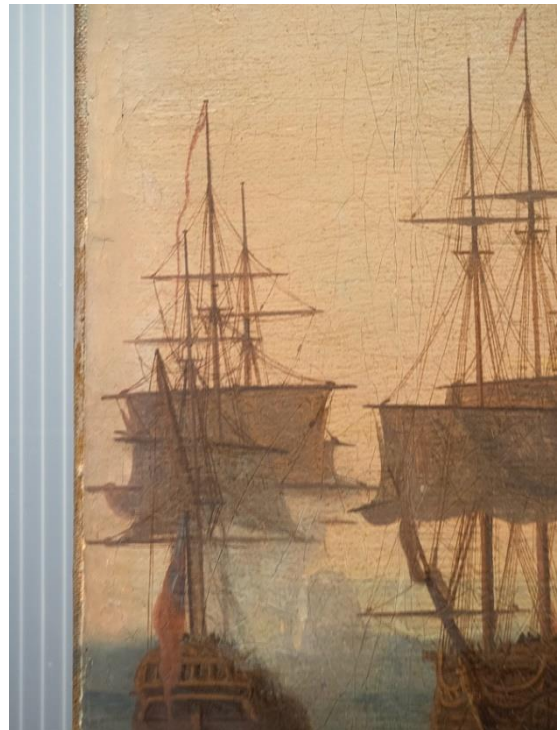
Before Treatment – Detail, Upper Right, Normal lighting



After Treatment – Detail, Upper Right, Normal lighting



Before Treatment – Detail, Lower Left, Normal lighting



After Treatment – Detail, Lower Left, Normal lighting