

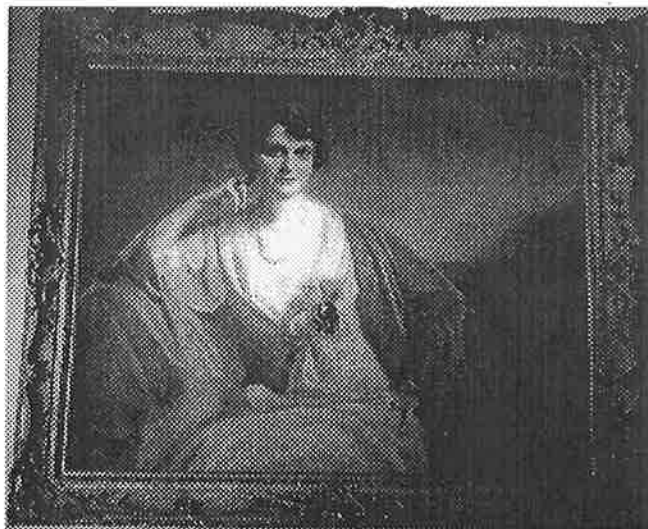
Coe Hall Frame Survey

Title: Portrait of Caroline Coe
Location: Great Hall
Frame Type: Carved wood; Gesso; Gold Leaf
Maker/Date: Mark Davis/1987
Examiner: Eric Price

Dimensions: 60" x 50"
Moulding Dimensions: 5 1/4"W x 3 1/2"D

Description

The frame was examined on the wall, therefore the type of wood and the joint method could not be observed. Louis 15th style frame. All carved wood ornament. Ogee profile with cut through ornament. Outer band of egg and leaf, scrolling foliate on ogee with scallop corners sand texture gesso and inner foliate band. The frame is finished in gold leaf with red bole.



Condition

The frame has a grime layer. The finish has been intentionally abraded with small wood losses. There are scattered gesso losses and the gesso is actively flaking along the front edge.

Painting Installation

The face of the painting contacts the bare wood rabbet.

Treatment Recommendations

Remove grime. Consolidate unstable gesso and inpaint losses. Install painting properly.

PRIORITY: LOW

TIME COMMITMENT: LOW -25 HOURS