

ACCESSION NUMBER _____

NEGATIVE NUMBER _____

DATE _____

ACQUISITION INFORMATION

Source of Acquisition _____

Address _____

Type of Acquisition

Gift

Purchase

Other

Date of Acquisition _____

OBJECT INFORMATION

Object Classification

Marble topped demi lune table

Condition of Object

Good

Fair

Poor

Requires Conservation Examination/Treatment

Notation of Damage or Parts and Pieces Missing from the Object

Marble Cracked

Measurements, Given in Inches and Metric

Height: *32* inches _____ metricWidth: *40* inches _____ metric

Length: _____ inches _____ metric

Depth: _____ inches _____ metric

Thickness _____ inches _____ metric

Diameter: _____ inches _____ metric

OBJECT DESCRIPTION AND HISTORY

Date of Object _____

Artist or Maker _____

Country _____

Material(s) from which Object is made _____



**French Room
Demi lune Table**



**French Room
End Table**



Conservation Comments:

William Clark: Re-glued the figures on the stretchers.

David Bayne: Both appear stable but need more examination. The gilding and the gesso on the demi-lune table is especially vulnerable.

Recommendations:

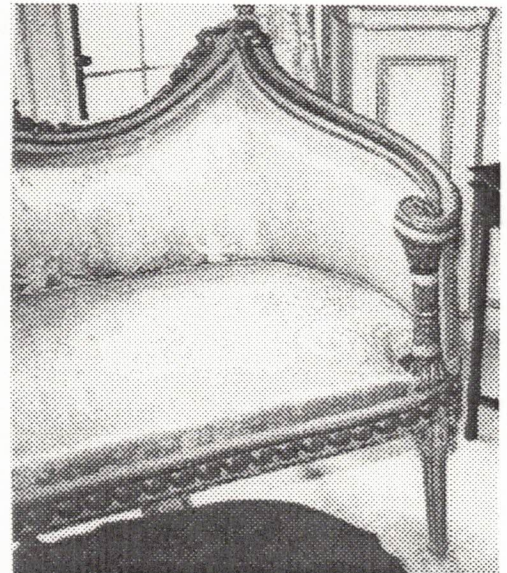
David Bayne: Fabric is new. Re-upholstery is very tight and since the furniture is not sat on, the tension of the springs could be loosened without changing the profile.

Needs brief exam by the textile conservator.

Director's Comments

Fabric is an acceptable match to the original and the profile on the front edge is better here than on the chairs.

**French Room
Settee**



French Room

3. **Pair Louis XVI Style Gilt Wood and Glazed Vitrines-on-Stand**

A pair of early 20th Century Louis XVI style gilt and painted wood vitrines-on-stand, having straight molded-edge cornice with leaf-carved detail, cut-cornered ends, over a central, long, glazed door, opening to a glass-shelved interior with mirrored back and base; the cabinet set on conforming stand with carved intertwining "ribbon" frieze, supported on straight tapered legs, with carved laurel-leaf and horizontal cross-fluted design, ending in cuffed, foliate-carved feet, "X"-stretchered base, with central domed, circular laurel-leaf carved medallion, (extensive restoration to base of each).

69" 30" x 14"

Two 19,000

Provenance: William R. Coe;
Estate of Caroline Coe, (his wife).

4.

Louis XVI Style Demi-Lune Console Table

A late 19th - early 20th Century Louis XVI style carved gilt wood and marble demi-lune console table, having a Sienna marble molded-edge top, with outset side-back and side-front protrusions, set on conforming base, with ornately carved pierced skirt frieze, with three inset laurel-leaf carved panels, gadroon edge surround, interspersed with stylized anthemion-leaf medallion, the whole set on four turned, tapered fluted legs, with laurel-carved motif at top and bottom, each ending in cuffed and turned, tapered foot, with curviate "X"-stretchered base, centered by a carved, foliate-filled urn finial, with cascading floral swag, (some damage to the cascading floral swag).

32" x 40" x 20"

12,500

Provenance: William R. Coe;
Estate of Caroline Coe, (his wife).