

COE HALL INVENTORY WORKSHEET

PLANTING FIELDS FOUNDATION

Accession Number: 1995.024.001

Other Number: _____

Source of Acquisition: Scudder

Date: 6/28/95

Address: Cleft Road

Mill Neck, NY

Phone: _____

Method of Acquisition:

☒ Gift

☐ Purchase

☐ Other: _____

Object name: Clock, Mantle

Classification: _____

Description: A late 19th c French mantle clock having a rectangular bronze glazed case with champléve borders, flat top + footed base. Contains circular brass spring driven works with blue, white, gold dial + mercury pendulum

Materials: Bronze, glass

Measurements: Height: 11.5 Length: _____ Width: 6.5 Depth: 5 Diameter: _____

Markings or inscriptions: "Vincent & Cie 1855" "Made in France"

Date of Object: 1855 Country of Origin: France

Artist/Maker/Distributor: Vincent + Cie

Value: 1,500 Authority: Abbe, Jr. Appraisal on File? Y Date: 3/8/95

Object Location: Louis XVI Room Date: _____

Condition/Conservation Priority:

1 - Urgent

2 - Serious

3 - Requires Treatment

4 - Needs Work

☒ 5 - Good

Notation of damage, missing elements, repairs or conservation history: _____

Provenance and/or exhibit history: _____

Other Comments: _____

Compiler: Cannarsa

Date: 1/29/07

APPRAISAL OF CERTAIN FINE ART AND DECORATIVE
PROPERTIES
A RECENT GIFT TO THE COE HALL MUSEUM
PLANTING FIELDS FOUNDATION
OYSTER BAY, N.Y. 11771
FROM MISS SAIDIE SCUDDER
CLEFT ROAD
MILL NECK, N.Y. 11765
MARCH 8, 1995

1. "MOTHER JACK" Nurse to King Edward VI, 1537-1553.
A bust portrait of woman wearing white dress and wimple.
A framed and matted modern reproduction of a tinted
pencil drawing in the Royal Collection.
Plate size: 14" x 9 1/2" 175.--
2. "A GRAND NATIONAL NIGHTMARE"
A lampoon of steeple chase in which the horses have
reversed roles with the spectators.
A framed early 20th century tinted photo engraving.
Plate size: 11" x 7"
Signed: P. Buchanan. 135.-

Note: Peter Buchanan, English School, exhibited
at the Royal Academy ca. 1888.
3. A pair of 19th century ring and baluster turned
brass candlestick with circular base.
13 3/4" high x 4 3/4" diameter. 300.-
Note: Undeciphered makers marks on bottom
edge.
4. A late 19th century French mantle clock.
Marked: "Vincent & Cie 1855" and "Made in France",
having a rectangular bronze glazed case with
champleve borders, flat top and footed base.
Contains circular brass spring driven works with
blue, white and gold dial, and mercury pendulum.
11 1/2" x 6 1/2" x 5" 1,500.-
Marked: Made in France
Vincent & Cie
Medaille d'Argent, 1855"

5. **Edwardian Lady's Writing Table**

An Edwardian Sheraton style faded mahogany lady's writing table, with straight, line-inlaid edge, over long drawer, over two short side drawers, supported on straight tapered legs, each ending in square brass castors, reeded, bail-handle brass pulls.

30" x 35" x 20"

4500

6. **Edwardian Spider-Leg Occasional Table**

An Edwardian mahogany, walnut and satinwood-inlaid spider-leg occasional table, having an intricate marquetry and parquetry-inlaid top, beautifully patinated, with cross-banded edge surround, the inlay depicting a scene of garden walls and buildings, with cartouche-type surround, the table top set on curviate marquetry-inlaid skirt, supported on four turned, tapered legs, with "X"-stretched base, (top most probably 18th Century).

25" x 21" x 15"

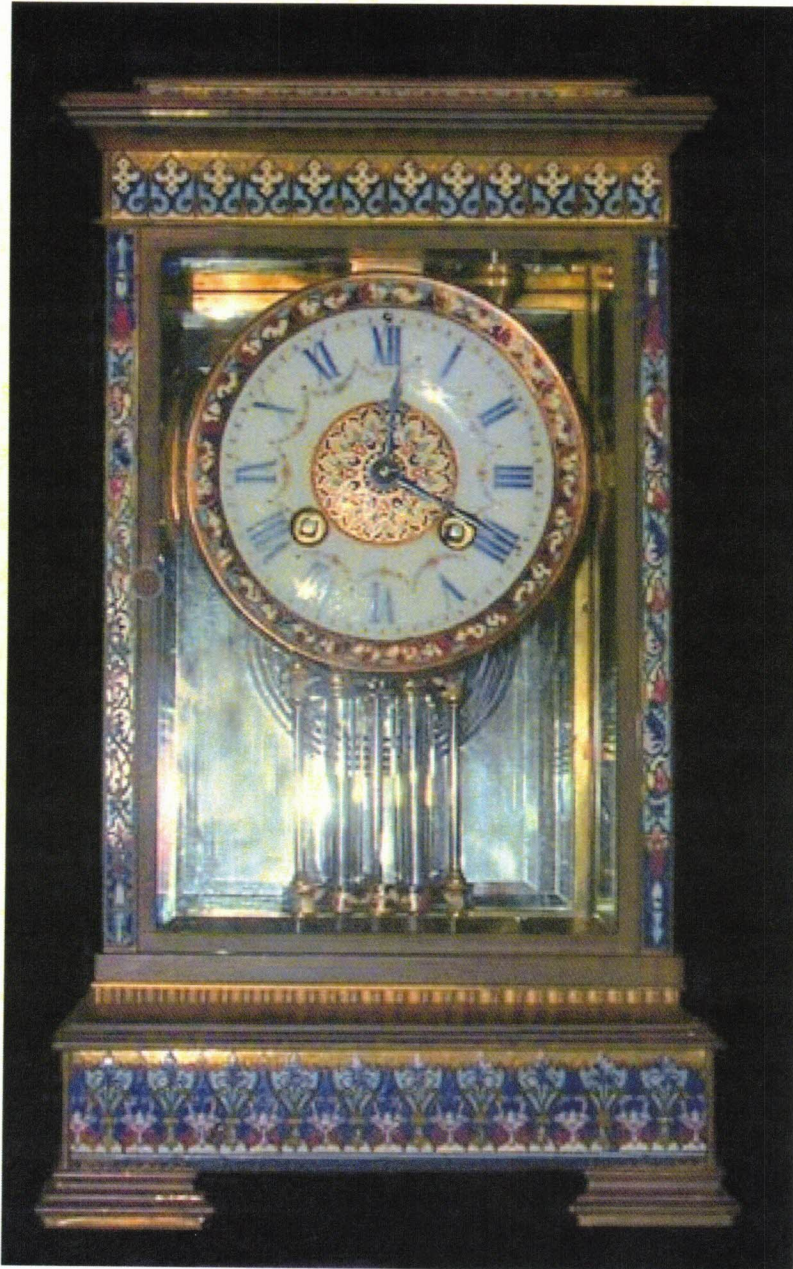
12,000

7. **French Brass, Glass and *Champlevé* Enamel Mantle Clock**
FAB

A late 19th Century cast brass, glass and *champlevé* enamel mantle clock, c.1895, *Duceux Leroy*, French, probably at *Amiens*, the enamel design in stylized Arabesque form, having stepped-down top with *champlevé* enamel trim over and on the frieze, a long beveled glass door, glazed case on three additional sides, the door revealing a white enamel circular dial with hand-painted floral swag garlands, Roman numerals, and *champlevé* trim surround, mercury tube pendulum, also with *champlevé* enamel, the whole set on stepped-down pedestal base, with *champlevé* frieze, set on four, square-molded feet.

11 1/2" x 6 1/4" x 4 1/2"

4800



Description

A late 19th Century French mantle clock having a rectangular bronze glazed case with champleve borders, flat top and footed base. Contains circular brass spring driven works with blue, white and gold dial, and mercury pendulum.

Marked: Made in France / Vincent & Cie / Medaille d'Argent, 1855"

Moved from Louis XVI Reception Room by Henry B. Joyce , 12.2008.