

The Metropolitan Museum of Art

March 20, 1997

Susan Donovan
Educational Services Coordinator
Coe Hall at Planting Fields
Arboretum State Historic Park
P.O. Box 58
Oyster Bay
New York, NY 11771

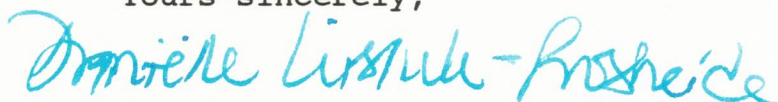
Dear Susan,

Enclosed please find two references to cabinets inlaid with ivory and mother-of-pearl similar to the one at Coe Hall.

Thank you for making my visit to Mr. Coe's estate such a pleasant one. I am looking forward to return with warmer weather so as to enjoy the gardens as well.

With best wishes.

Yours sincerely,



Daniëlle O. Kisluk-Grosheide
Associate Curator
European Sculpture
and Decorative Arts

DOK-G:hz

English Furniture Illustrated

*A Pictorial Review of English
Furniture from Chaucer
to Queen Victoria*

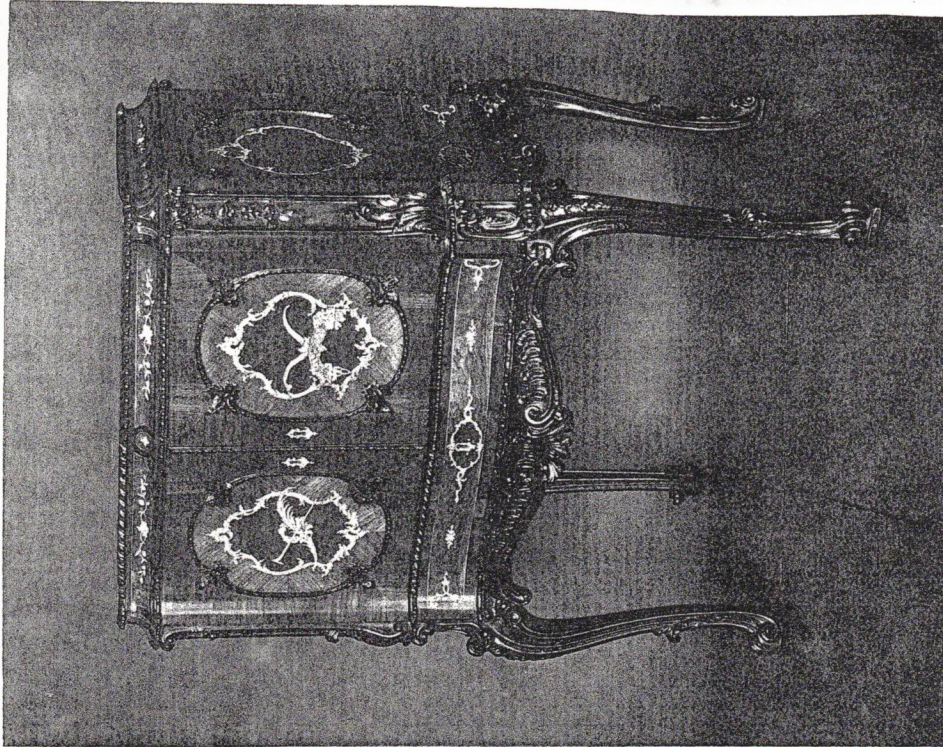
By
OLIVER BRACKETT

Revised and edited by

H. CLIFFORD SMITH, F.S.A.



ERNEST BENN LIMITED
LONDON
1950



QUEEN CHARLOTTE'S JEWEL CABINET

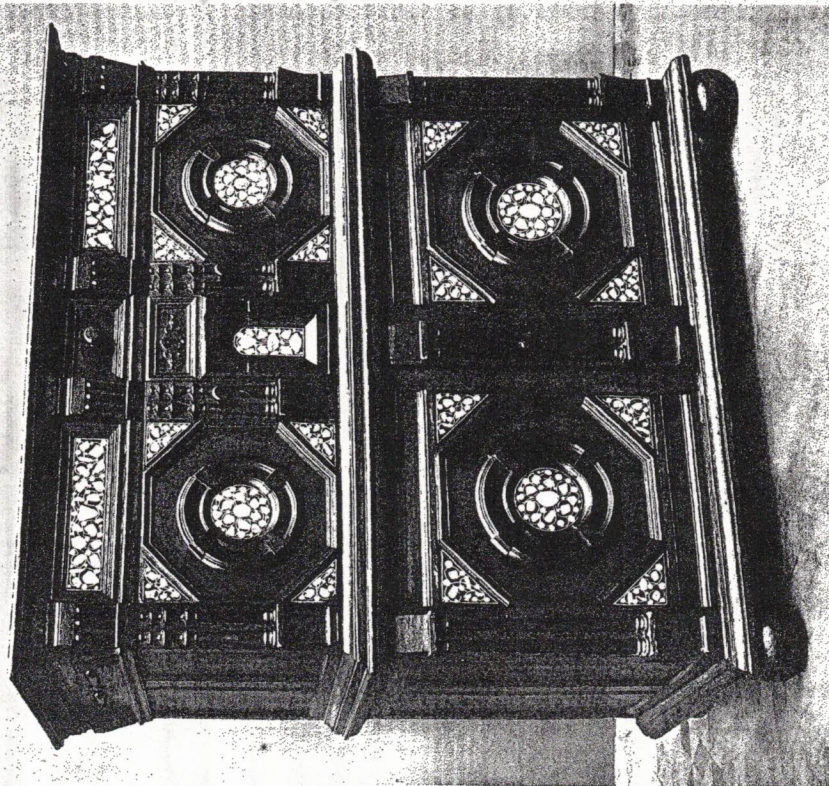
Of mahogany inlaid with various woods and engraved ivory. Made by William Vile in 1762

The property of the Marquess of Cambridge



OAK HANGING CUPBOARD
About 1640

Victoria and Albert Museum



OAK CHEST OF DRAWERS
About 1655

*The property of the Duke of Bucklebury,
at Eoughton House, Northamptonshire*



[74]

74

AN EBONISED, OAK AND FRUITWOOD CHEST inlaid in ivory and mother-of-pearl in two sections, decorated overall with flowerheads and foliate scrolls with moulded rectangular top above one long panelled drawer inlaid with the date 1652 and another arcaded panelled deep drawer with central roundel with a bird and ebonised mouldings, the lower section with two panelled doors with octagonal mouldings containing roundels flanked and divided by ebonised mouldings, on toupie feet, 19th Century
47in. (119cm.) wide; 51½in. (131cm.) high; 25. (63.5cm.) deep

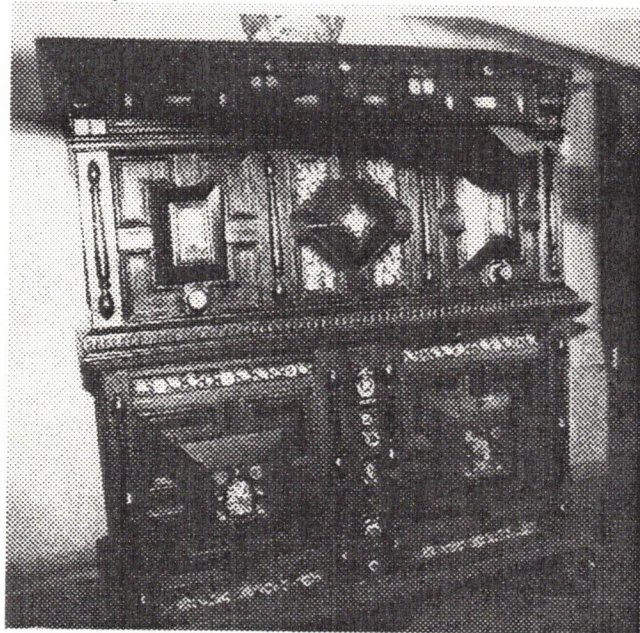
Cf. O. Brackett, *English Furniture Illustrated*, London, rev. ed. 1950, p. 79 for a very similar chest belonging to the Duke of Buccleuch, Boughton House, Northamptonshire
£3,000-5,000

161 B721

Chromie's London
3 May 1990



Entry Hall



Inlaid Press Cupboard



detail of door

Conservation Comments:

William Clark: Reset block fronts (for example of "block fronts" see detail) by flattening back of the panels and re-attached.

David Bayne: Now missing several areas of molding and inlay. Unfortunately viewing it is difficult due to ramp that leads to den. Both mother of pearl and ivory used in inlay along with ebony. The arrangement and combinations of doors and drawers is confusing since what appear to be doors seemed to function as drawers. This was not investigated further because of accessibility, fragility, and tightness due to humidity.

Unstable and high priority *BUNFEET SHOW WATER DAMAGE FROM MOPPING*

Recommendations:

Is it possible to remove ramp to improve visibility of an important piece? Mylar coasters should be used under the objects displayed on the top. The doors should be fixed so that visitors can not open.

Director's Comments

Not original to the collection. Acquired from the Neuhooff collection. Referred to as a "game piece" since incorporates game markers (fish, flowers etc.) in decoration. Is it authentic or made of parts? Could the inlay have been added much later?

MANY DIFFERENT OPINIONS EXPRESSED BY SOTHEBY'S & GEO. WAY

FRONT HALL

→ 14. William & Mary Chest of Drawers

A late 17th Century oak, bone, ebony and mother-of-pearl inlaid chest of drawers, English or Continental, in two parts, some of the bone and mother-of-pearl inlay of a later date, having a straight, molded-edge top, with mitered corners, over a shallow long drawer, over a deep long drawer; the lower part with two cupboard doors, opening to three long drawers, the whole set on deeply molded base, carved, scrolled feet; the upper long drawer having three recessed panels, inlaid with mother-of-pearl fish, (later), each recessed panel separated by carved molding, with applied, turned-bone "buttons," the drawer centered by a large, turned, ebony pull, screwed into a ratcheted circular bone *appliqué*, the pull, with inset bone-ring trim; the deep, long drawer, a complex combination of raised and recessed panels, each panel with "pillow centers," bone and pearl inlay with applied ebony half-pilasters between the panels, with two pulls similar to above; the lower cupboard doors, also raised and recessed panels, also with intricate bone and pearl inlay of foliate and geometric design, with applied, ebony half-pilasters; the three long drawers behind the cupboard doors, are less ornately paneled, the bone pulls are simpler, with applied and tapered half-pilasters, (restorations and adaptations).

50" x 46" x 25"

20,000

Provenance: Neuhoﬀ Collection, Long Island, 1968.

15. Charles I Press Cupboard

A mid-17th Century carved oak press cupboard, probably Charles I, having straight edge top, over a flatly carved frieze, supported at each end by bulbous, carved, urn-shaped balusters, flanking recessed, three-sided cupboard, with canted sides, the three sides with heavily carved frames, each centered by foliate inlaid panels, the flowers being stylized tulip and carnation, with inlaid heart detail; the lower section with flat inlaid frieze over one long, foliate-carved drawer, over two cupboard doors, each with inlaid, recessed panels, similar to above, carved side stiles, centered below by straight skirt with curviate carving, deeply recessed side panels, (some losses to inlay, back is of later date, feet are probably restored, some restorations elsewhere, mostly intact).

56 1/2" x 56 1/2" x 19"

30,000

Provenance: Neuhoﬀ Collection, Long Island, 1967.

JACOBEOAN CARVED AND INLAID OAK TALL CHEST OR CABINET

English, XVII Century 1979.1

Plain top projecting over a frieze drawer and a deep long drawer with a pair of cupboard doors beneath. all paneled with molded sections and raised central panels and enriched with applied ebony sceptre-like ornaments. and inlaid in mother-of-pearl and bone with floral arrangements. fish. birds and flowers. Ebony knob handles and unusual scrolled frontal supports. The doors open to three long drawers with bandings of thumb-nail flutes and fitted with ivory knob handles. Some restoration.

Height 50 1/2 inches; width 46 inches

VALUE \$ 3,000.00

JACOBEEAN CARVED AND INLAID OAK TALL CHEST OR CABINET

English, XVII Century 1979.1

Plain top projecting over a frieze drawer and a deep long drawer with a pair of cupboard doors beneath. all paneled with molded sections and raised central panels and enriched with applied ebony sceptre-like ornaments. and inlaid in mother-of-pearl and bone with floral arrangements. fish. birds and flowers. Ebony knob handles and unusual scrolled frontal supports. The doors open to three long drawers with bandings of thumb-nail flutes and fitted with ivory knob handles. Some restoration.

Height 50 1/2 inches; width 46 inches

VALUE \$ 3,000.00

JACOBEOAN CARVED AND INLAID OAK TALL CHEST OR CABINET

English, XVII Century 1272

Plain top projecting over a frieze drawer and a deep long drawer with a pair of cupboard doors beneath. all paneled with molded sections and raised central panels and enriched with applied ebony sceptre-like ornaments, and inlaid in mother-of-pearl and bone with floral arrangements, fish, birds and flowers. Ebony knob handles and unusual scrolled frontal supports. The doors open to three long drawers with bandings of thumb-nail flutes and fitted with ivory knob handles. Some restoration.

Height 50 1/2 inches; width 46 inches

VALUE \$ 3,000.00