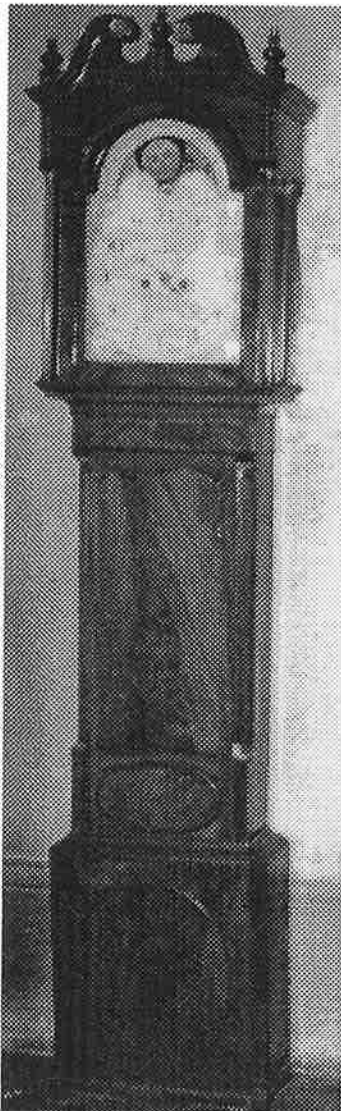




Writing Room and Hall

Writing Room Hall Tall case Clock



Conservation Comments:

William Clark: Glue blocks had slipped and the mechanism had slipped down. Glue blocks re-glued.

David Bayne: Finish is very good and overall appears stable.

Recommendations:

Director's Comments



Conservation Comments:

David Bayne: Settle was not examined in detail but light levels are very good and the piece is stable. *NEUHOFF COLLECTION.*

Recommendations:

Pull back from the wall and check for bio-deterioration in rear. Check for mop and housekeeping damage to bottom members.

Writing Room Hall Settle

