



Small Town Girl Arts

Alyssa Feihel

58 Lexington Avenue

Malverne, NY 11565

516-987-4523 alyssa@smalltowngirlarts.com

---

**CONDITIONS REPORT FOR PLANTING FIELDS ARBORETUM:**  
**STAINED GLASS WINDOW REPAIR 2025 – 2026**



## ***Report Description***

The following report will detail the conservation of one stained glass window. It will include written description of the work being done, photos of the work (including before, during, and after restoration), and recommendations for future maintenance.

## ***Conservation Work***

- ❖ The window consists of a historic panel in a metal box inserted into a rectangular grid of clear glass. Before photographs were taken (Figures 1-7).
- ❖ The grid of the window was deconstructed. Original lead was in poor condition and was discarded for recycling. New lead of the matching profile was purchased for re-leading: 5/8" flat (Figure 8).
- ❖ During deconstruction, it was discovered that there were several horizontal pieces of lead that had a hollow-heart (comes that have an opening in the heart so that a flat metal bar can be inserted). The one directly under the metal box had the metal bar dangerously up against the glass with nothing in between (Figures 9-11). A diagram was created to mark those locations (Figure 12). After searching for 5/8" hollow heart lead from several suppliers, there was none available at this time. The solution was to utilize a material called Strong Line – this is an internal steel reinforcement which will provide the additional structural support the window requires. Strong Line was inserted at the same locations at the metal bars – one strip on each side of the heart of the lead.
- ❖ The historic panel insert was removed from the box and the plastic sheet of Lexan was discarded. This material is known to yellow over time and exposure to the elements. A new piece of clear plate glass was purchased from a local glazier and reinstalled in the box. This greatly improved the visual of the window from the exterior of the house.
- ❖ The decaying foam weatherstripping inside the metal frame was scraped off and replaced with new.
- ❖ To reinsert the metal box in the window, all warped/mangled lead was removed from the box, which was then gently cleaned. New lead comes were soldered neatly to the metal box, creating a smoother



# Small Town Girl Arts

Alyssa Feihel

58 Lexington Avenue

Malverne, NY 11565

516-987-4523 alyssa@smalltowngirlarts.com

aesthetic from the exterior.

- ❖ All of the clear glass pieces were scraped of excess dirt and putty, then scrubbed with mild detergent and water for cleaning.
- ❖ There were four broken pieces in the window (Figure 11). Clear glass was chosen for replacements of these pieces. The glass was matched to the existing texture of the original glass as best as possible – slight wave texture and very clear.
- ❖ The historic panel was given an extensive cleaning. This included removing as much of the old putty as possible, a detailed cleaning of the front and back of each piece of glass, and then finished with new putty for waterproofing and stability (Figures 13 and 14).
- ❖ The window was then leaded with new came – the cleaned metal box was reinserted during this process. Once the window was soldered, puttied, and cleaned, the restored historic panel was reinstalled in the metal box. The entire window was then placed in a custom-built crate for transportation to the site (Figures 15 and 16).
- ❖ The finished piece was just slightly smaller than the window opening. This is common with older windows as they tend to warp slightly in place over time due to gravity, loss of putty, etc. When a full re-leading is done, the overall dimensions typically shrink slightly as the rebuilding process takes place on a flat table surface. An additional lead came will be added at the top to account for this difference.
- ❖ For installation, a small putty bevel was added to secure the window in place and the stops were reattached from the outside (Figures 17 and 18).
- ❖ Before and After comparisons were created for the following: cleaning test on historic panel, center medallion of historic panel, full view of historic panel, exterior view, and interior view (Figures 19 – 23).
- ❖ Continued Maintenance is a huge part of extending the lifespan of these windows. Routine checks for loss of putty, warping of lead, etc. should be done on a regular basis. Gentle cleaning/dusting is recommended as well.



# Small Town Girl Arts

Alyssa Feihel

58 Lexington Avenue

Malverne, NY 11565

516-987-4523 alyssa@smalltowngirlarts.com

**Photos:**



**FIGURE 1: Interior view on site, before conservation**



# Small Town Girl Arts

Alyssa Feihel

58 Lexington Avenue

Malverne, NY 11565

516-987-4523 alyssa@smalltowngirlarts.com



**FIGURE 2: Exterior view on site, before conservation**



# Small Town Girl Arts

Alyssa Feihel

58 Lexington Avenue

Malverne, NY 11565

516-987-4523 alyssa@smalltowngirlarts.com



**FIGURE 3: Detail of warped/mangled lead around metal box, view from exterior**



# Small Town Girl Arts

Alyssa Feihel

58 Lexington Avenue

Malverne, NY 11565

516-987-4523 alyssa@smalltowngirlarts.com



**FIGURE 4: Detailed views of broken glass and yellowed Lexan panel**



# Small Town Girl Arts

Alyssa Feihel

58 Lexington Avenue

Malverne, NY 11565

516-987-4523 alyssa@smalltowngirlarts.com



**FIGURE 5: Exterior (left) and interior (right) views, before conservation**



Small Town Girl Arts

Alyssa Feihel

58 Lexington Avenue

Malverne, NY 11565

516-987-4523 alyssa@smalltowngirlarts.com



**FIGURE 6: Historic panel detail, before conservation**



# Small Town Girl Arts

Alyssa Feihel

58 Lexington Avenue

Malverne, NY 11565

516-987-4523 alyssa@smalltowngirlarts.com



**FIGURE 7: Historic panel center medallion detail, before conservation**



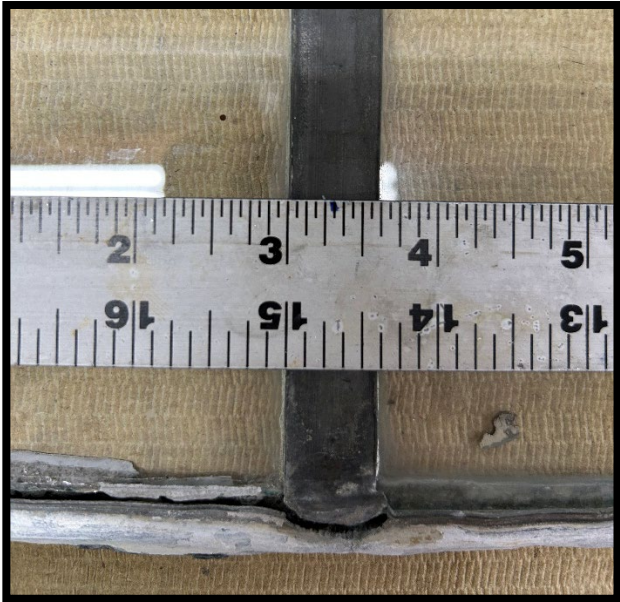
# Small Town Girl Arts

Alyssa Feihel

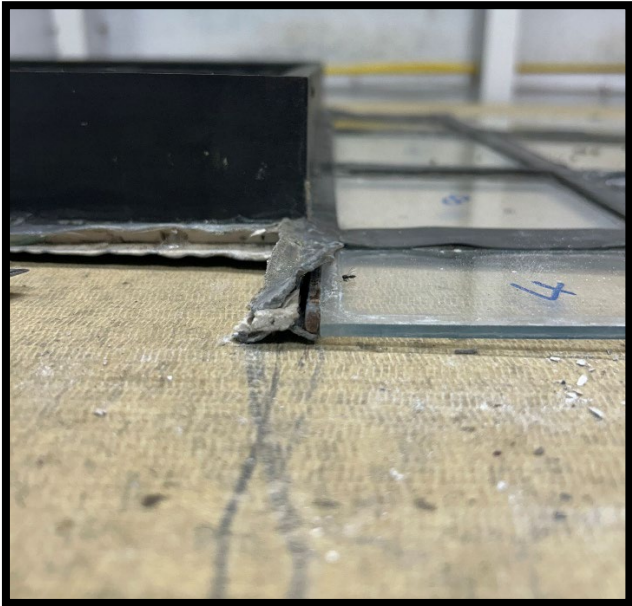
58 Lexington Avenue

Malverne, NY 11565

516-987-4523 alyssa@smalltowngirlarts.com



**FIGURE 8: 5/8" lead came profile**



**FIGURE 9: Metal bar directly against glass**



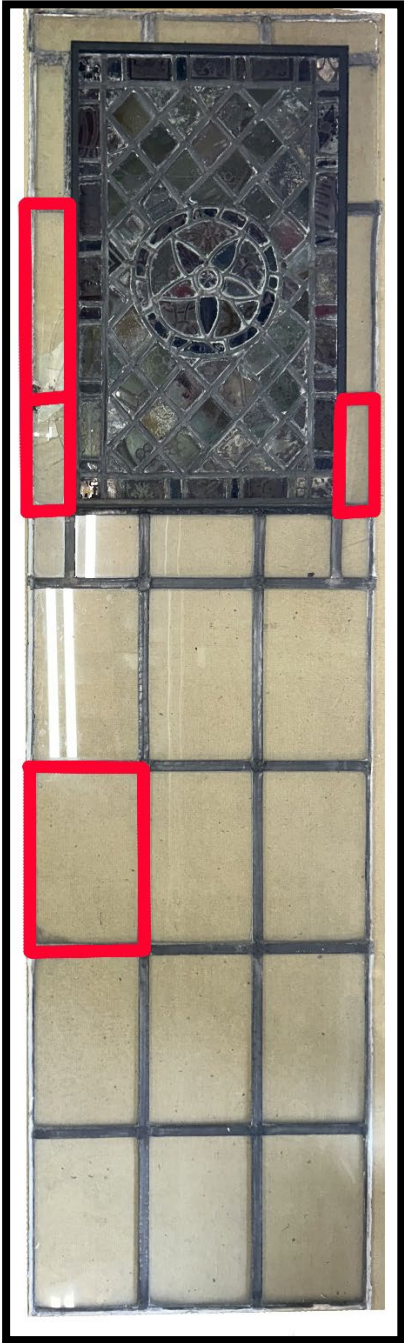
**FIGURE 10: Views of hollow heart lead came**



# Small Town Girl Arts

Alyssa Feihel  
58 Lexington Avenue  
Malverne, NY 11565

516-987-4523 alyssa@smalltowngirlarts.com



**FIGURES 11 and 12: Existing conditions diagrams, broken glass for replacement (left) and hollow heart lead came (right)**



Small Town Girl Arts

Alyssa Feihel

58 Lexington Avenue

Malverne, NY 11565

516-987-4523 alyssa@smalltowngirlarts.com



**FIGURE 13:** *New putty for the historic panel*



Small Town Girl Arts

Alyssa Feihel

58 Lexington Avenue

Malverne, NY 11565

516-987-4523 [alyssa@smalltowngirlarts.com](mailto:alyssa@smalltowngirlarts.com)



**FIGURE 14:** Historic panel, after conservation



Small Town Girl Arts

Alyssa Feihel

58 Lexington Avenue

Malverne, NY 11565

516-987-4523 alyssa@smalltowngirlarts.com



**FIGURE 15: Re-leaded panel with new comes, exterior and interior views**



Small Town Girl Arts

Alyssa Feihel

58 Lexington Avenue

Malverne, NY 11565

516-987-4523 alyssa@smalltowngirlarts.com



**FIGURE 16: Historic panel reinserted into window and packed in box for transport**



# Small Town Girl Arts

Alyssa Feihel

58 Lexington Avenue

Malverne, NY 11565

516-987-4523 alyssa@smalltowngirlarts.com



**FIGURE 17: Finished panel reinserted on site, exterior view**



# Small Town Girl Arts

Alyssa Feihel

58 Lexington Avenue

Malverne, NY 11565

516-987-4523 alyssa@smalltowngirlarts.com



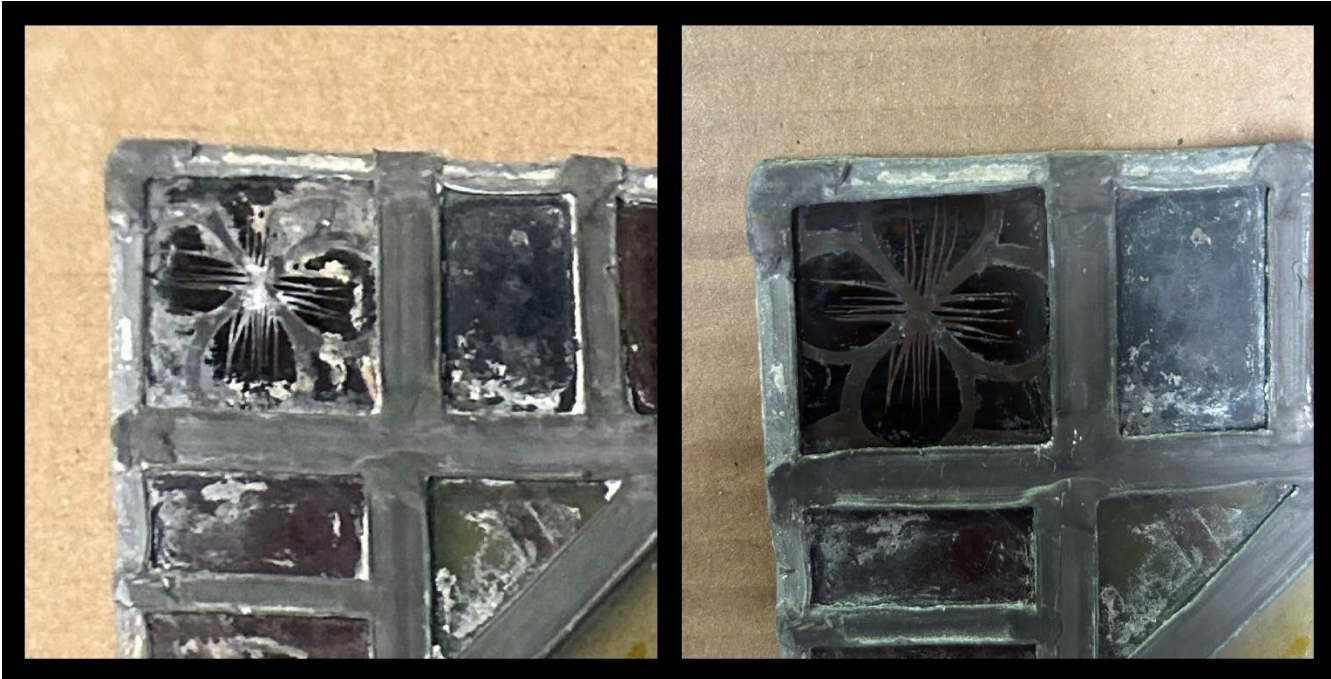
**FIGURE 18: Finished panel reinserted on site, interior view**



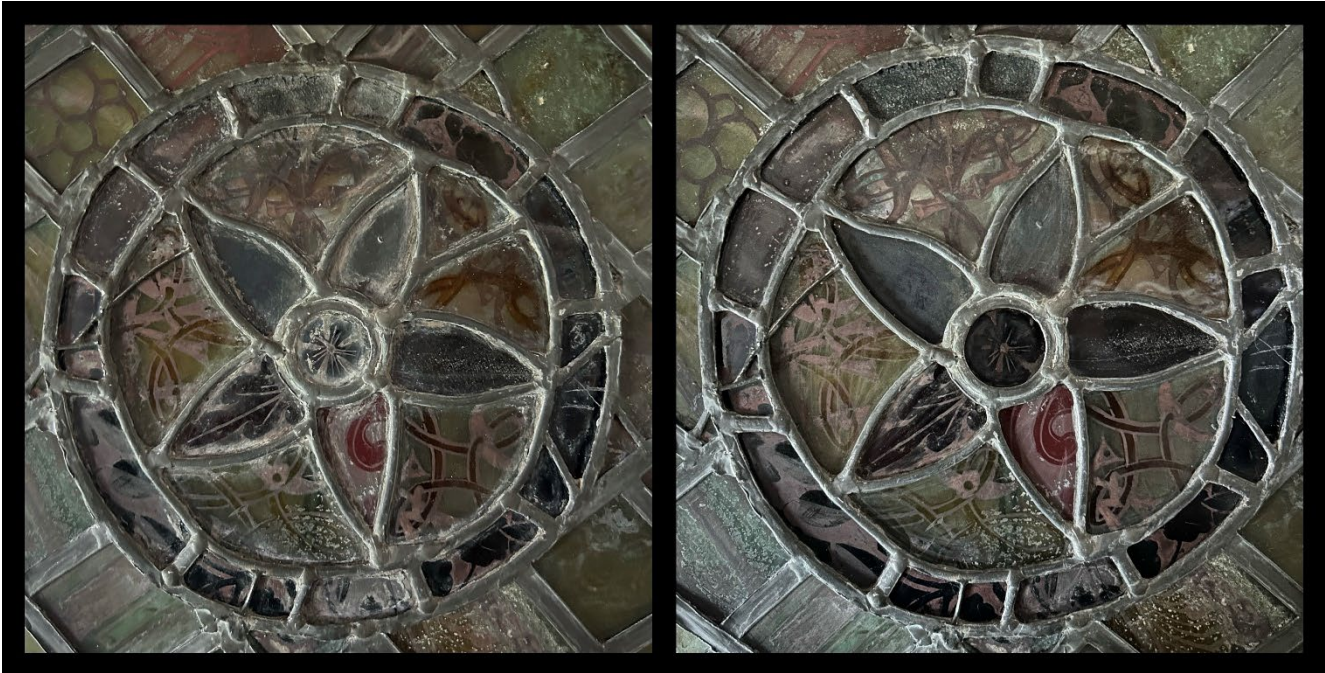
# Small Town Girl Arts

Alyssa Feihel  
58 Lexington Avenue  
Malverne, NY 11565

516-987-4523 alyssa@smalltowngirlarts.com



**FIGURE 19: Before and After, cleaning test of historic panel**



**FIGURE 20: Before and After, cleaning center medallion of historic panel**



Small Town Girl Arts

Alyssa Feihel

58 Lexington Avenue

Malverne, NY 11565

516-987-4523 alyssa@smalltowngirlarts.com



**FIGURE 21: Before and After, historic panel**



# Small Town Girl Arts

Alyssa Feihel

58 Lexington Avenue

Malverne, NY 11565

516-987-4523 alyssa@smalltowngirlarts.com



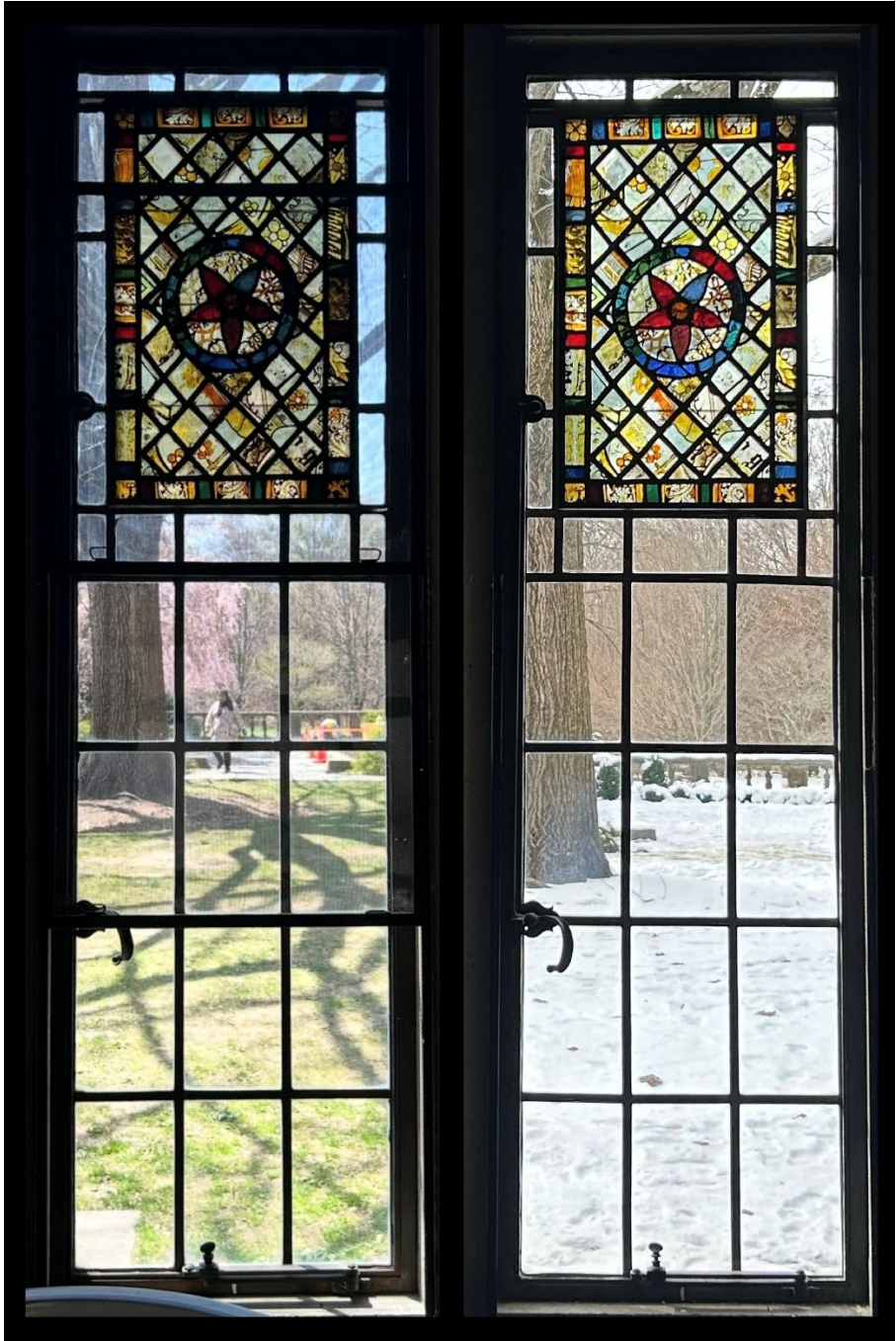
**FIGURE 22: Before and After conservation, exterior view**



# Small Town Girl Arts

Alyssa Feihel  
58 Lexington Avenue  
Malverne, NY 11565

516-987-4523 alyssa@smalltowngirlarts.com



*FIGURE 23: Before and After conservation, interior view*