

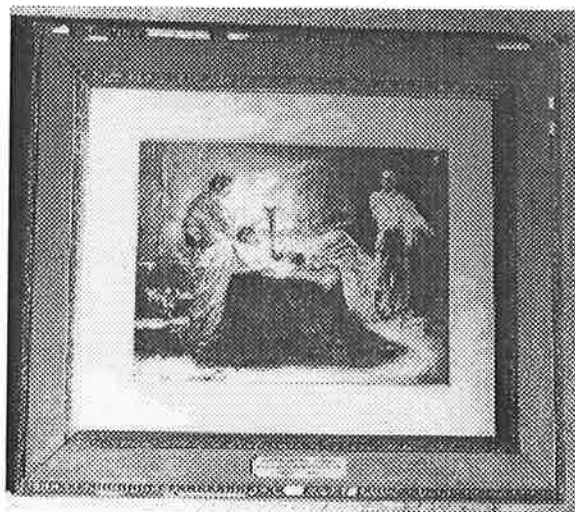
## Coe Hall Frame Survey

*Title:* Brutus and the Ghost  
*Location:* Writing Room Hall  
*Frame Type:* Wood; Compo ornament; Gesso layer; Gold leaf  
*Maker/Date:* Unknown maker/late 19th C.  
*Examiner:* Eric Price

*Dimensions:* 14 1/2" x 16 1/2"  
*Moulding Dimensions:* 1 7/8"W x 1"D

### Description

The frame was examined on the wall therefore the type of wood and the joint method could not be observed. Wide flat moulding. All compo ornament consisting of outer band of leaf and tongue and small foliate band along the sight edge. The original finish was gold leaf.



### Condition

The surface has been mostly covered with bronze powder overpaint. The mitered corners are open. There are major compo losses in the outer band of leaf and tongue ornament and scattered gesso losses. The remaining ornament is very unstable.

### Painting Installation

The watercolor painting is behind glass.

### Treatment Recommendations

Stabilize compo ornament and consolidate gesso layer. Remove grime and overpaint. Fill gesso losses. Replace compo losses. Gild and tone repairs.

**PRIORITY: HIGH**

**TIME COMMITMENT: MEDIUM - 50 HOURS**