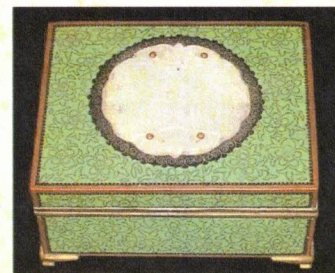


Collection
Other#
Old#
Accession# 1986.018.004
Received as Gift
Cataloged by Cannarsa
Source Coe, Mrs. Clover Simonton
Creditline
Home loc Storage

002\1986018004.JPG



Description A green enameled box with hinged lid. Top of box has a white jade carved medallion design fixed to it with nails. Box sits on four feet, has a fine gold floral pattern throughout.

Date		Status date	
Year Range	0 - 0	Status by	
Condition	Good	Status	OK
Height	2.000 in	Dim Notes	
Length	4.250 in		
Diameter	0.000 in		
Weight	0.000 oz		

Subjects	Classification
Search terms	People
Legal	Repatriation
Publications	Related Notes
Maint start 11/28/2006	Maint notes
Maint cycle	
Condition Good	Cond date
Condition by	Cond notes

Appraisor	Acq value	Current value min
App notes	Value date	Current value max

Notes Label on bottom reads "Mrs W. R. Coe, 1/79 - Page 5, Item #53"

1986.018.004 ~ Box (continued)

Collector Clover Simonton Coe
Site
Excavated by
Identified by
Preparator
Pl origin

Coll date / /
Site#
Excav date / /
Ident date / /
Prep date / /

Event
Material Metal/Stone: Jade

Found
Used
Made
Owned

Provenance Clover Simonton Coe
Planting Fields Foundation

Title
Signed loc
Signed name

Artist
Artist2
Artist3

Medium Metal, Stone
Material Metal/Stone: Jade
Technique
Culture
School

Accessories
Image size
Inscription type
Inscrip techq
Inscrip lang
Makers mark

Frame desc
Frame size
Inscription text
Inscription position
Inscription translation

Dating Method

Feature

Unit	X-Coordinate	0.00	Datum
Level	Y-Coordinate	0.00	Box Number
Stratum	Z-Coordinate	0.00	Bag Number

Presrv Method

Habitat

Skeletal Elem

Kingdom	Sub-Family	Age
Phylum	Genus	Era
Class	Species	Period
Order	Sub-species	Epoch
Family	Sex	Stage

Varieties

Ocurrence

Texture

Formation	Lithofacies
Member	Assem zome
Rock type	Origin
Chemical comp	Grain size
Crystal System	Classification
Spec Gravity	Color
Hardness	Fossils
Luster	Pressure
Streak	Temperature
Fracture	Surface Proc
Updated/by	Dataset

10/30/2014 04:54 PM Unknown