



**French Room
Demi lune Table**



**French Room
End Table**



Conservation Comments:

William Clark: Re-glued the figures on the stretchers.

David Bayne: Both appear stable but need more examination. The gilding and the gesso on the demi-lune table is especially vulnerable.

Recommendations:

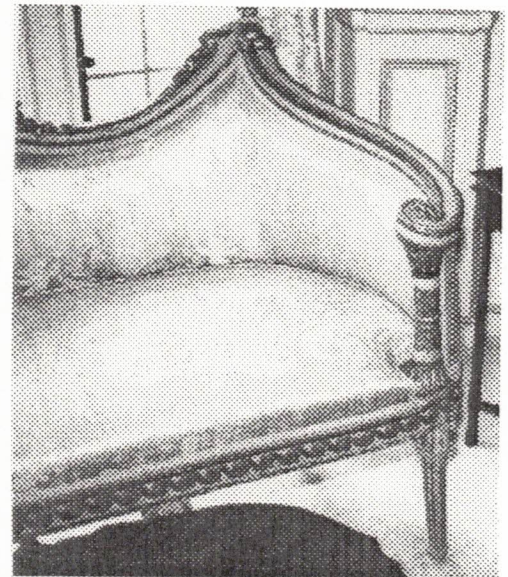
David Bayne: Fabric is new. Re-upholstery is very tight and since the furniture is not sat on, the tension of the springs could be loosened without changing the profile.

Needs brief exam by the textile conservator.

Director's Comments

Fabric is an acceptable match to the original and the profile on the front edge is better here than on the chairs.

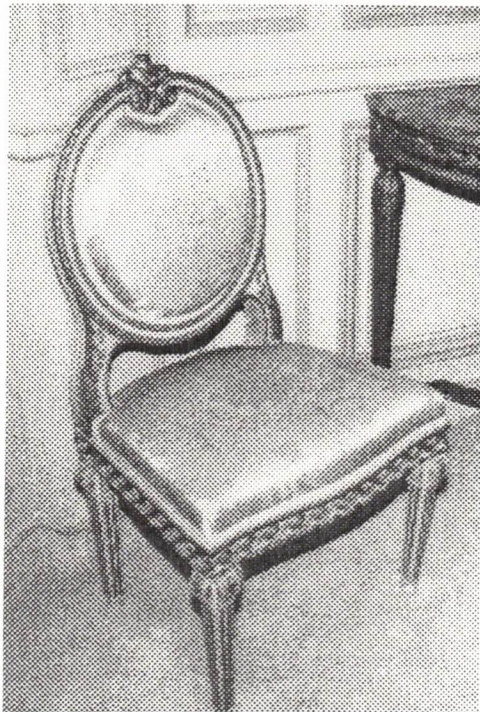
**French Room
Settee**



French Room



Upholstered Chairs



Conservation Comments:

David Bayne: There are three of these chairs in the French Room with several more in storage that have not been re-upholstered but still have there original "cake"

Recommendations:

Similar to the settee and all the upholstered furniture, the tension on the seats is not necessary since they are not sat on.

Director's Comments

The chairs were moved to Rome and then back. Scalamanore did the upholstery work

SCALAMANDRE FABRIC
CONTRACTOR DID UPHOLSTERY &
DRAPERY FABRICATION

French Room Desk



Conservation Comments:

David Bayne: The desk appears to be stable and no problem except for high light exposure on the proper right side.

Recommendations:

Block the light from the window where it hits the desk.

Director's Comments

None

THERE ARE UV FILTERS ON
WINDOWS - WE NEED TO CHECK
FOR LIGHT RATING