



Conservation Comments:

David Bayne: Painted red with bronze paint decorations that is now tarnished and dull. The chairs have rush seating that is varnished and flaking. The rush itself is in relatively good shape. Loose joints on the chairs and some repairs on table and chairs with modern plated screws through the front of the legs. Overall the entire set is not exceptional since it is a relatively cheaply made factory set.



Recommendations:

The heads of the screws are disfiguring and need to be removed and joints re-glued as necessary. Clean the dirty paint. The tarnished bronze paint though can not be restored or brightened without re-doing it..

Director's Comments

More chairs are in storage; set purchased for the room and is priority.

Buffalo Room Sideboard

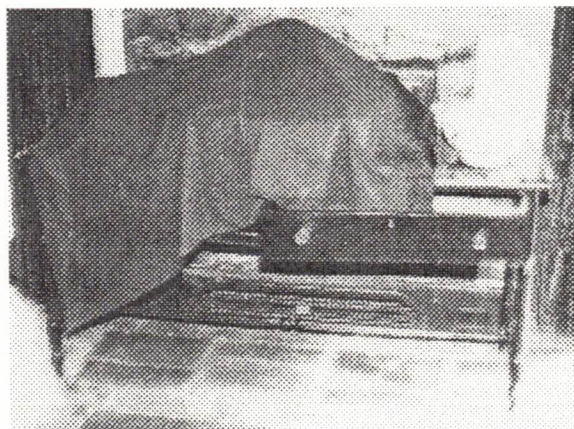
Conservation Comments:

David Bayne: Sideboard is part of the set with similar decoration. Drawers used for storage of cloth that covers silver during closed hours. Suffers from many of the same problems as the rest of the set.

Needs more examination.

Dining Room

ORIGINAL TO COLLECTION



- b. six dining side chairs with ladder-back, each "ladder" rung, with stencilled design, in imitation of the twist design on the table skirt, rush seat, legs similar to the table, box-stretchered base;

40" h.

- c. a sideboard with slightly bowed front, with two frieze-drawers, supported on turned, tapered and fluted legs, "H"- stretchered base, gilt highlights on fluting and twisted-curve designs.

32" x 66" x 22"

Suite 6500

Provenance: William R. Coe;
Estate of Caroline Coe, (his wife).

85. **William & Mary Style Sideboard**

An early 20th Century William & Mary style oak sideboard, having straight, molded-edge top over two deep, recessed-panel drawers, with tear-drop pulls, curviate skirt frieze, all set on ring-turned legs, box-stretchered base, (some losses to molding).

33" x 57" x 19"

1000

86. **Two Brass Kerosene Lamps**

Two cast brass kerosene table lamps, c.1900, with classical columnar form body, gadroon edge trim, electrified.

base, 13"; 24" h. overall

Two 1500

87. **Pair Baroque Style Ecclesiastical Candlestick Table Lamps**

A pair of baroque style gilt, gessoed, carved-wood ecclesiastical-candlesticks, with patinated finish, electrified, made as table lamps.

candlestick, 25" h.; 38" h. overall

Two 2250

Provenance: William R. Coe

MEMO: 8/24/78

To: Planting Fields File

From: ELW

Re: Furniture at the Manor House identified by Lawrence Palmer 8/8/78
as originating from Coe Hall (*) and other items of furniture at
the Manor House which are similar to the style of the original
Coe Hall furnishings

LOCATION 8/8/78 in MANOR HOUSE

ORIGINAL LOCATION IN COE HALL
from Hewitt/Healy Photograph Album
ca. 1928

First Story:

Mrs. Coe's Bedroom

* mantle

Gordon Jones' Office

* Knoll sofa
* Flemish chairs (2)
* mirror
* mantle & andirons

painting by Guardi
barometer

Hall

* consoles (2)
* wall sconces
* tall-case clock
* jade lamps(2)

French Room

Alcoves

* vitrines (2)
* consoles (2)

French Room
Powder Room

lacquer mirror
gold console

Elliptical Living Room

* mirror
* Waterford crystal sconces
* mantle

French Room.

Chippendale chair
Hepplewhite chairs (2 different designs)

Dining Room

mirror

Help's Dining Room

* round dining table

Buffalo Room

Miscellaneous

joint stools (2 different designs)

B a s e m e n t :

Large room at end of hall

* dining chairs (3)

* sideboard

Buffalo Room

Buffalo Room

library table

credenza

tapestry settee

Queen Anne side chair

gilt picture frame

tole lamp

Stuart tall-back chairs

Small room on left before above room

tole lamp

Queen Anne console

S e c o n d S t o r y :

Hall

chest of drawers

Windsor chair

gateleg table

paintings (2)