

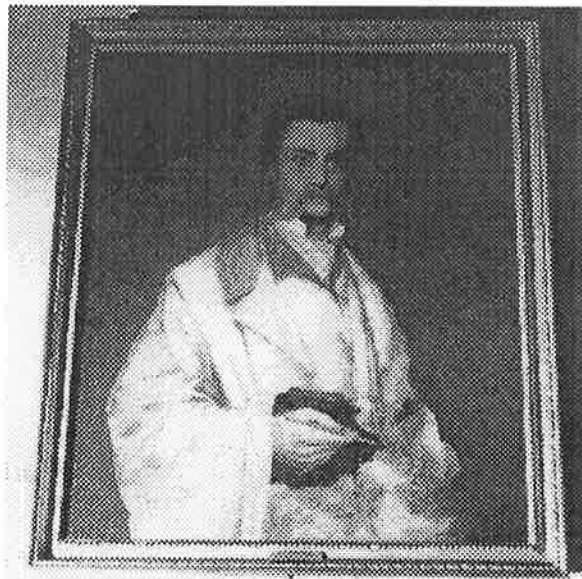
Coe Hall Frame Survey

Title: Self Portrait of William Robertson
Location: Great Hall
Frame Type: Wood; Compo Ornament; Gesso Layer; Gold Leaf
Maker/Date: Unknown maker/19th C.
Examiner: Eric Price

Dimensions: 33" x 20"
Moulding Dimensions:

Description

The frame is nearly identical to the frame for the **Tangier Street Scene** in the Writing Room Hall. The frame was examined on the wall, therefore the type of wood and the joint method could not be observed. Deep stepped ogee profile with a band of compo beads on a string near the sight edge. And applied rope ornament in the step of the ogee. The frame was originally finished in gold leaf.



Condition

The frame appears to have been refinished. The finish appears to be metal leaf with a surface coating. The detail has been lost in the ornament. There are bead ornament losses at the bottom center and the beads are unstable along the right side. The miters are open at the upper right.

Painting Installation

The face of the painting contacts the bare wood rabbet.

Treatment Recommendations

Remove grime. Consolidate unstable ornament. Secure separated corner miter. Replace ornament losses, gild and tone repairs. Install painting properly in frame.

PRIORITY: MODERATE

TIME COMMITMENT: MEDIUM - 40 HOURS