

BIRD BATHS



E. E. SODERHOLTZ
WEST GOULDSBORO
MAINE

GOULDSBORO HISTORICAL
SOCIETY

#20
(duplicate)



BIRD BATHS

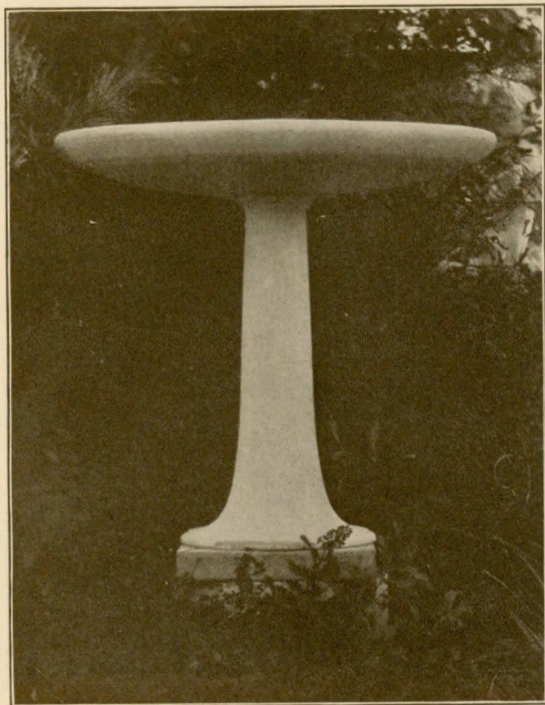
DID you ever try the experiment of being friendly with Nature? The birds, the bees, the little four-footed creatures, the flowers, the grasses, the trees — all respond to friendly advances. With a little encouragement a barren bit of land will transform itself into a veritable gem of out-door beauty. With a little help and protection grass will grow, trees will get a start, flowers will spring up — the bees, birds, and little animals will appear. Encouragement, protection, and friendliness — Nature will respond eagerly to these. Did you ever try the experiment? I did.

Outside my study window is a small patch of lawn, velvety green in Spring, sun-baked straw in Summer, desolate barrenness in Autumn and Winter. At the end of this lawn is a large gray boulder partly covered with ivy, and beyond, a tangle of briars and huge

brakes. Beside the gray boulder is a tall white birch whose slender branches droop canopy-wise in a vague attempt to shelter the hapless bit of lawn.

Last Spring I cleared away the briars and brakes which lay nearest the gray boulder. Around the base of the boulder I planted a few perennials. On top of the boulder I placed a gray concrete bird bath of the wide, shallow-bowl type, a pleasing example of the potter's art. I hoped that the birds of the neighborhood would use this bowl, but hardly expected it would attract more than a rarely occasional visit. In fact, I had more thought of the vista from my study window than of the birds. It made a spot that pleased the eye. The low gray bowl harmonized perfectly with the gray of the boulder and the silver-white of the birch. The little pool above the colorful flowers and the gleaming ivy seemed like a miniature sylvan shrine.

And indeed so it came to be. Hardly had a week passed when a pair of bluebirds came and looked upon it and approved. They built a home in a hollow limb not far distant and were constant visitors at the bath. They were the first — but after them came a robin, and so on, until it ceased to fill me with wonder. I shall never forget the thrill of wonder that those first two bluebirds brought to me.



No. 105. BIRD BATH PRICE \$17.50

Height 2' 0" Diameter of basin 2' 0"

No. 105A. *Height 3' 0"* PRICE \$28.00

Diameter of basin 2' 0"

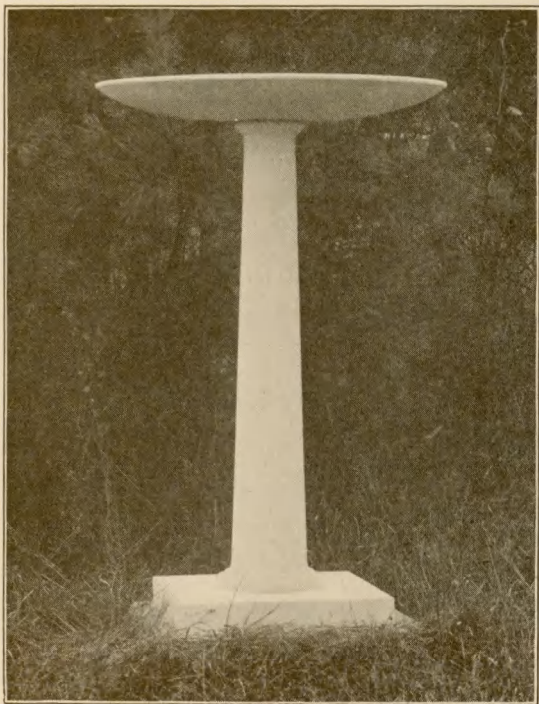
PRICES INCLUDE CRATING—F.O.B. WEST GOULDSBORO

A shallow pool of clear water — sunlight filtering through the shading branches of the birch, falling in glittering flecks upon the surface of the pool. A flicker of wings — a flash of blue — a splash of water and sunshine —

Birdlovers need not be told that there is a great deal of pleasure to be derived from helping and watching birds. Almost every one enjoys having birds about the home grounds where they can be watched and studied, but wholly aside from the enjoyment and pleasure which their presence gives, there is a practical value in encouraging the feathered folk to visit and linger through the seasons on your premises. Birds are your most helpful allies in the struggle against injurious insects and they give ample return in services for whatever you do for them. The chief problems of a bird's life are the securing of food and water, the rearing of young, and protection from dangers that menace them at all times.

One of the most effective means at your disposal for attracting birds is the bird bath or fountain. Birds are likely to nest near by watering-places. As many as sixty-nine different species of birds have been observed in one season visiting the same bird basin on a suburban lawn.

Water for drinking and bathing is a necessity of bird life. The natural sources of supply



No. 89

BIRD BATH

PRICE \$28.00

Height 3' 1" Diameter of basin 2' 0"

PRICES INCLUDE CRATING—F.O.B. WEST GOULDSBORO

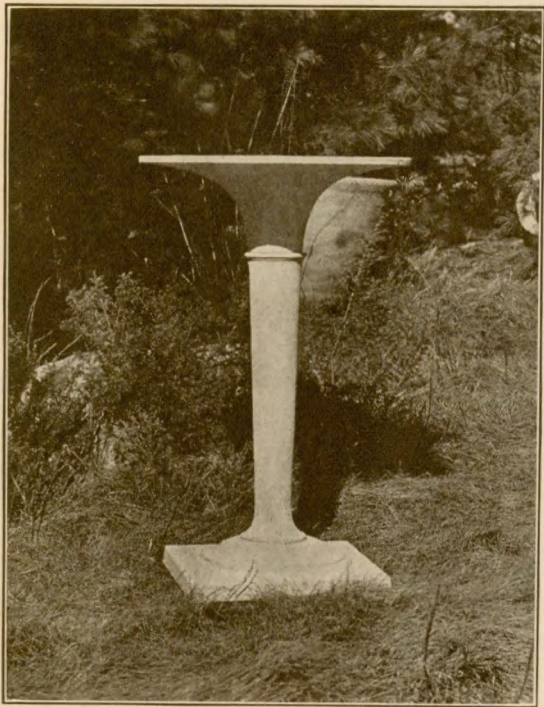
are often made unavailable at certain seasons, and birds are often hard put to it to find a safe place to drink and bathe. Especially during hot weather is this true. The heat dries up small pools and streams — and renders others stagnant. At that time of the year birds are often obliged to travel long distances, and in the case of young birds just learning to fly, such journeys are very hazardous, and at times impossible.

In Winter, snow may serve as a substitute for water — but only in part, and the birds will be found to be just as appreciative of a basin or fountain then as in warmer weather.

One factor that a well-planned bird bath can supply, which is lacking in most natural watering-places, is safety. Most natural drinking places are surrounded by shrubs or tall grasses which furnish a lurking place for the enemies of birds. A bird bath should always be so placed as to avoid giving cover to cats and other bird destroyers. When a bird's feathers are wet, it flies with difficulty and is an easy prey.

The water in a bird bath should be shallow and the edge of the basin should be of roughened material so that the birds will not slip. Modern concrete is ideal material from this point of view.

The bird bath should be placed where it can be observed without alarming the birds.



No. 164

BIRD BATH

PRICE \$28.00

Height 2' 9"

Diameter of basin 1' 9 $\frac{1}{4}$ "

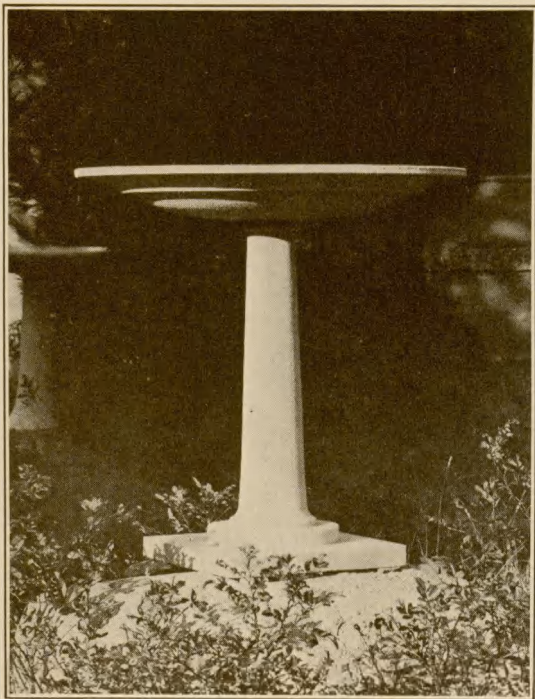
PRICES INCLUDE CRATING—F.O.B. WEST GOULDSBORO

Birds, like human beings, do not like to be conscious of being spied upon — but there is endless pleasure to be had from watching their comings and goings, their playful antics, and their workaday doings. The number and great variety of birds that will visit a bird bath is surprising — and there is much to learn of them. Regular visitors are distinguishable and come in time to seem quite as individual as any human acquaintances.

Most species of birds have a passion for bathing. In fact, they are more particular about the water in which they bathe than they are about their drinking water. Curiously, they will drink any dirty water, but much prefer to have clean water for bathing. It is interesting to observe that sea-birds often fly inland to fresh-water ponds and lakes to bathe.

Some birds prefer dusting to bathing and will roll in the dust or sprinkle it over themselves with their bills. Dusting and bathing are seldom practiced by the same bird. Sparrows do both, and some other species have been observed indulging in both customs, but it is not the rule.

Many fine flyers take their dip on the wing. Swallows, Humming-birds, and Kingfishers bathe in this fashion. The custom of plunging into the water at high speed seems to be fol-



No. 102. BIRD BATH PRICE \$17.50

Height 2' 0" Diameter of basin 2' 0"

No. 102A. *Height 3' 0"* PRICE \$28.00

Diameter of basin 2' 0"

PRICES INCLUDE CRATING—F.O.B. WEST GOULDSBORO

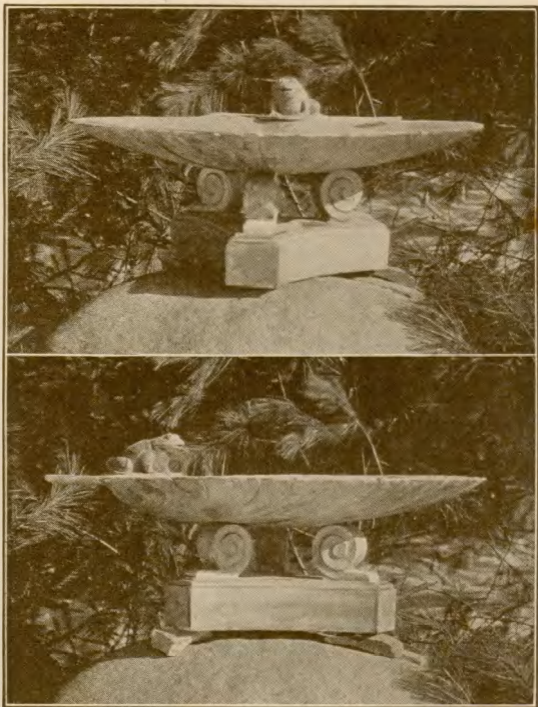
lowed generally by birds which take their food by the use of their wings, but some of the birds who are active on their feet occasionally plunge — more as a playful trick than as a custom.

A Word about Construction

SEVERAL essential qualities enter into the make-up of bird baths, fountains, and other garden pottery. When making a selection it is well to look for excellence of design, color, texture, and for adequate structural strength. Garden Pottery is distinguished by the following qualities : —

Design. — In the making of garden material design is considered of supreme importance. The gardens of the Old World and the Orient have supplied the *motifs* from which these designs have had their genesis, and every effort has been made to preserve the classical form and spirit of the originals in this modern adaptation. It has never been found necessary to sacrifice any of the æsthetic values to achieve a practical result.

Color and Texture. — The permanent pigments employed for coloring, like the delicate cool and warm hues of the garden decorations of the Orient, harmonize integrally with the ribbed rocks and evergreens of New England



No. 165

BIRD FOUNTAIN

PRICE \$42.50

Height 0' 9" Diameter of shelf 2' 2"

PRICES INCLUDE CRATING—F.O.B. WEST GOULDSBORO

as well as the Poinsettias and Bougainvillæa of the South. A choice of color and texture may be had.

Structural Strength. — The nature of the material and the method of construction assures permanence and strength. The product illustrated herewith is made of concrete by a method of spinning or turning which allows the careful placement of galvanized steel wires for reënforcement. This reënforcing is placed laterally and transversely while in process, with the result that the finished product is practically indestructible, and will withstand the stress and strain of extreme weather. All pipe connections on fountains are of brass or bronze to insure against corrosion.

