

# THE HOUSE BEAUTIFUL

367

GOULDSBORO  
HISTORICAL SOCIETY  
West Gouldsboro  
COLLECTION

*Garden  
Number*

Please return to  
E. E. Soderholtz  
West Gouldsboro  
Maine

*S. Wendell Mitchell*

25 CENTS

MARCH · 1919

3.00 A YEAR



# Charming Pieces of Pottery for Your Garden Which

*Designed by E. E. Soderholtz*

*of*

*West Gouldsboro, Maine*

*Pieces Ranging in Price*

*from*

*Five to Fifty Dollars*



*Height 3 feet. Diameter 2 feet 4 inches. Price \$45.*



*Height 2 feet 2 inches. Diameter 1 foot 7 inches. Price \$30.*



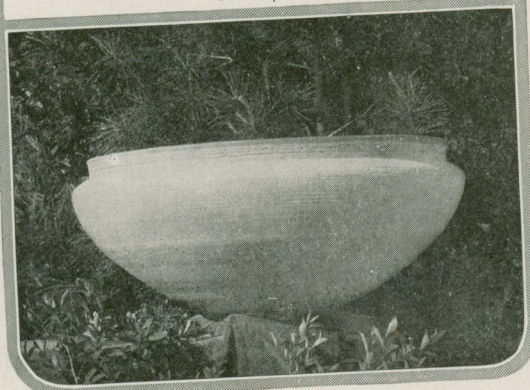
*Height 1 foot 10 inches. Diameter at top 1 foot 5 inches. Price \$15.*

MANY years of careful study lie back of these wonderful pieces of garden pottery. Mr. Soderholtz not only traveled extensively in every recognized centre of art and craftsmanship, but searched out every remote nook and corner where he was likely to find any noteworthy examples. With most painstaking care he photographed these pieces, and he has followed their proportions most faithfully in his reproductions. Strange as it may seem, the copies are

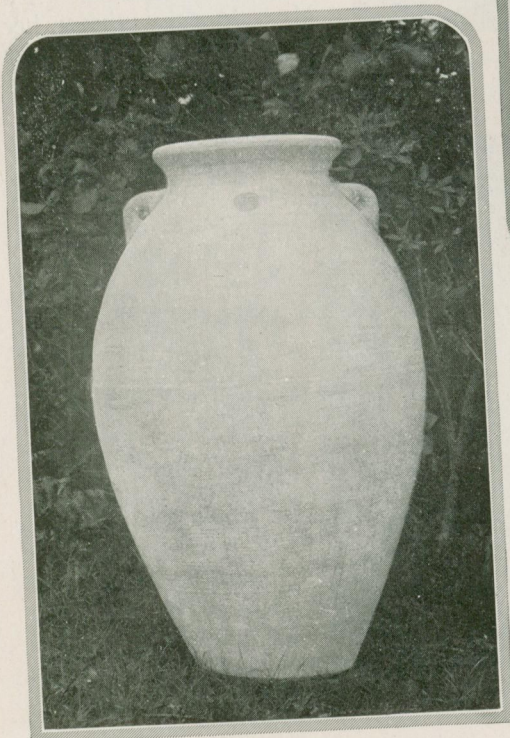
even more durable than the originals. They are made of concrete, far more enduring than the clay of the old pieces, and are scientifically reinforced with galvanized steel. This framework does not affect in the least the distinctiveness or beauty of design but does result in a permanence impossible in the clay. Each piece is made by a special process—not cast, but turned or spun as were the old clay pots on the potter's wheel. As all the pottery is made by hand no two pieces



*Height 1 foot 3 inches. Diameter 2 feet 5 inches. Price \$16.*



*Height 11 inches. Diameter 2 feet 5 inches. Price \$15.*



*(Left). Height 3 feet 1 inch. Price \$30.*

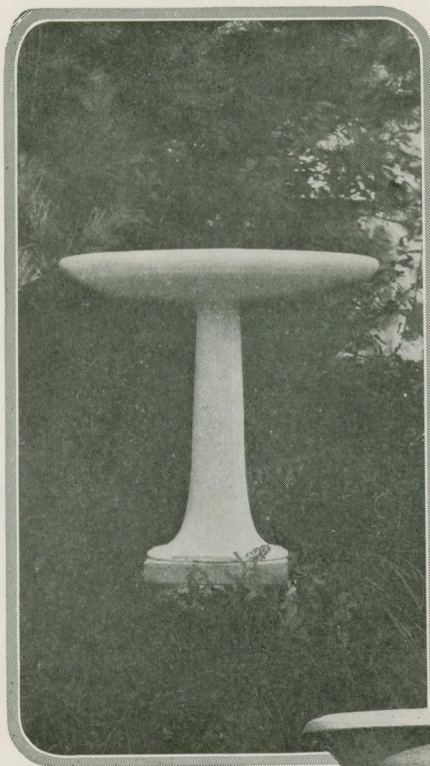
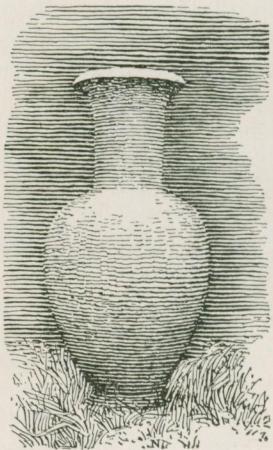
*Height 3 feet 6 inches. Iron stand included. Price \$45.*



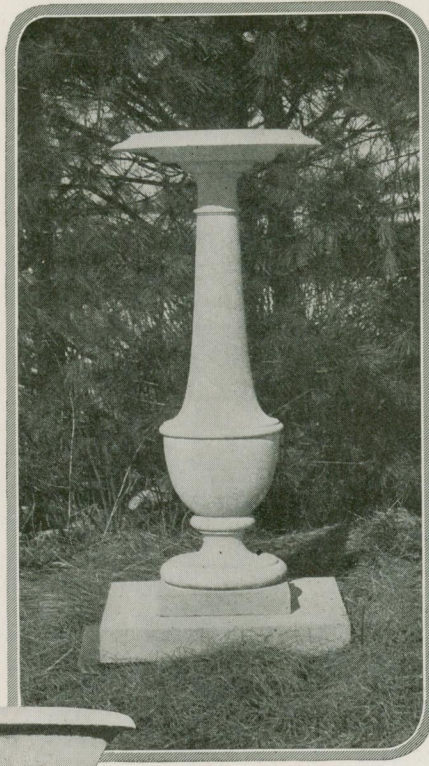


# Are Reproductions of Masterpieces of Ceramic Art

*Bird-bath. Height 2 feet.  
Diameter of basin 2 feet.  
Price \$15.*



*(Left). Height 3 feet 11 inches. Diameter 1 foot 11 inches. Price \$50.*



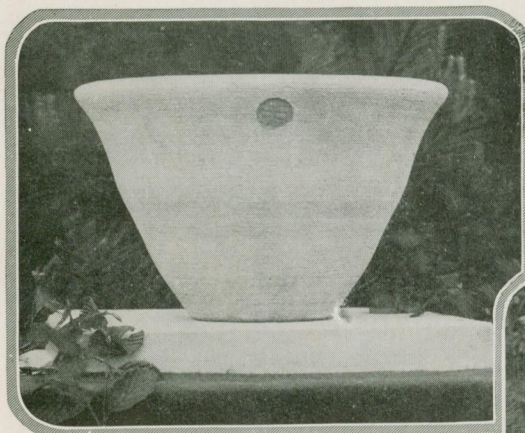
*(Right). Height 3 feet. Price \$20.*

*Sundial pedestal. Height 3 feet. Price \$35.*

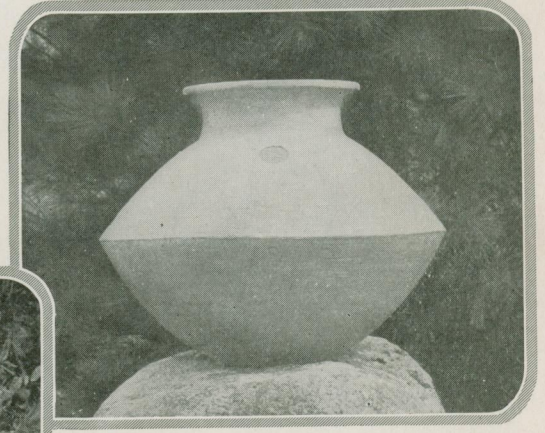
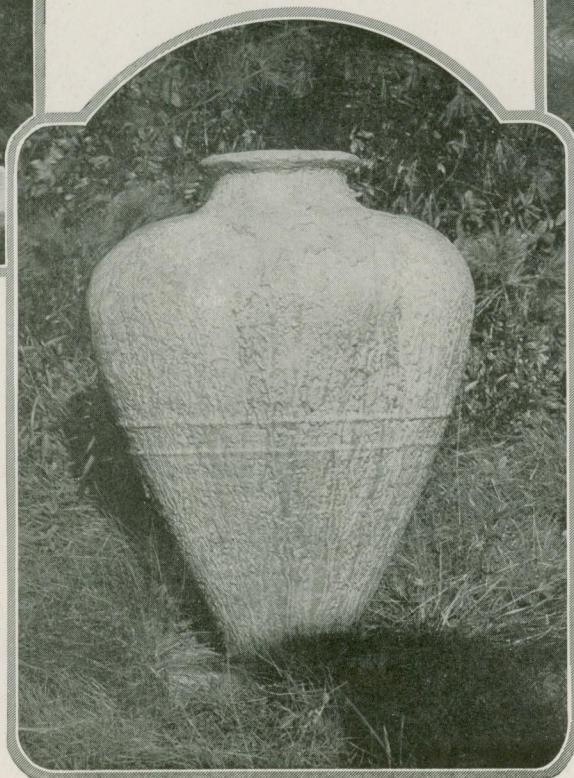
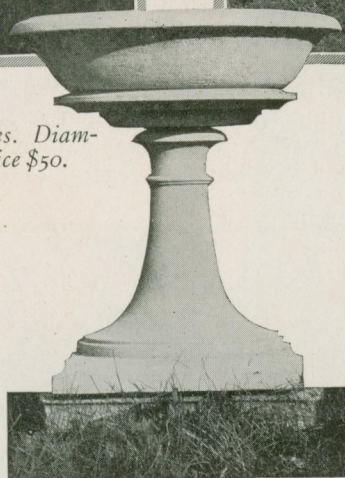


*(Right). Height 1 foot 8 inches. Diameter 1 foot 6 inches. Price \$18.*

*(Below). Height 1 foot 6 inches. Diameter 1 foot 10½ inches. Price \$18.*



*Height 11 inches. Diameter 1 foot 5 inches. Price \$5.*



*(Left). Height 2 feet 7 inches. Diameter 2 feet 1 inch. Price \$35.*

are exactly alike. So far from losing in the least measure the charms of the older pottery, Mr. Soderholtz's product preserves them in their entirety, possesses their identical qualities and provides in addition a superiority over the product of mechanical casting. After the proportions and the material were worked out, the next important step was to find pigments which would be impervious to the inroads of sun and storm.

The permanent pigments employed

by Mr. Soderholtz for coloring his composition, like the delicate cool and warm hues of the garden decorations of the Orient, harmonize integrally with the ribbed rocks and evergreens of New England, as well as with the poinsettias and bougainvilleas of the South. They adorn with an indefinable finesse, but with a compelling witchery, whatever they accompany. The idlest glance at them reveals them as although a unit, yet the distinguishing unit of the plan.