

West Shore Land
Co.

Frenchman's Bay

Canfieldshoro, Maine.

Mrs. H. D. Bickford
Mrs. Carrie B. Bickford
PROSPECTUS.



West Shore Land Company,

South Gouldsboro, Me.



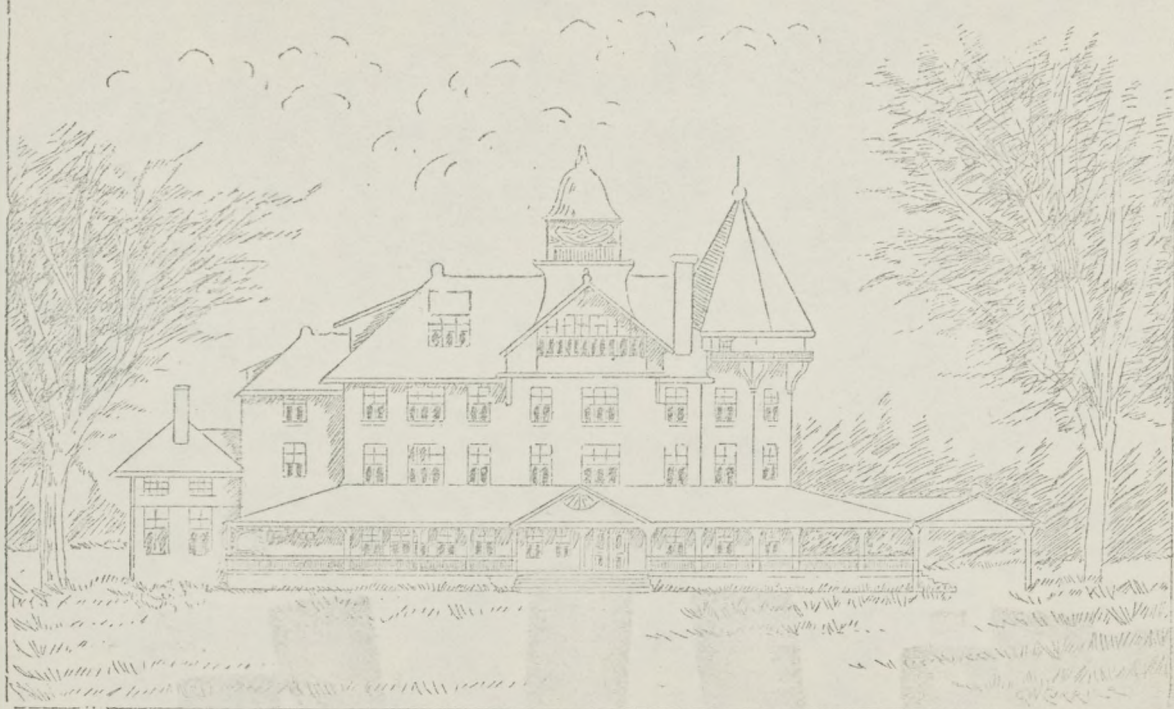
HORACE W. JORDAN, *President.*

A. H. WATKINS, *Treasurer.*

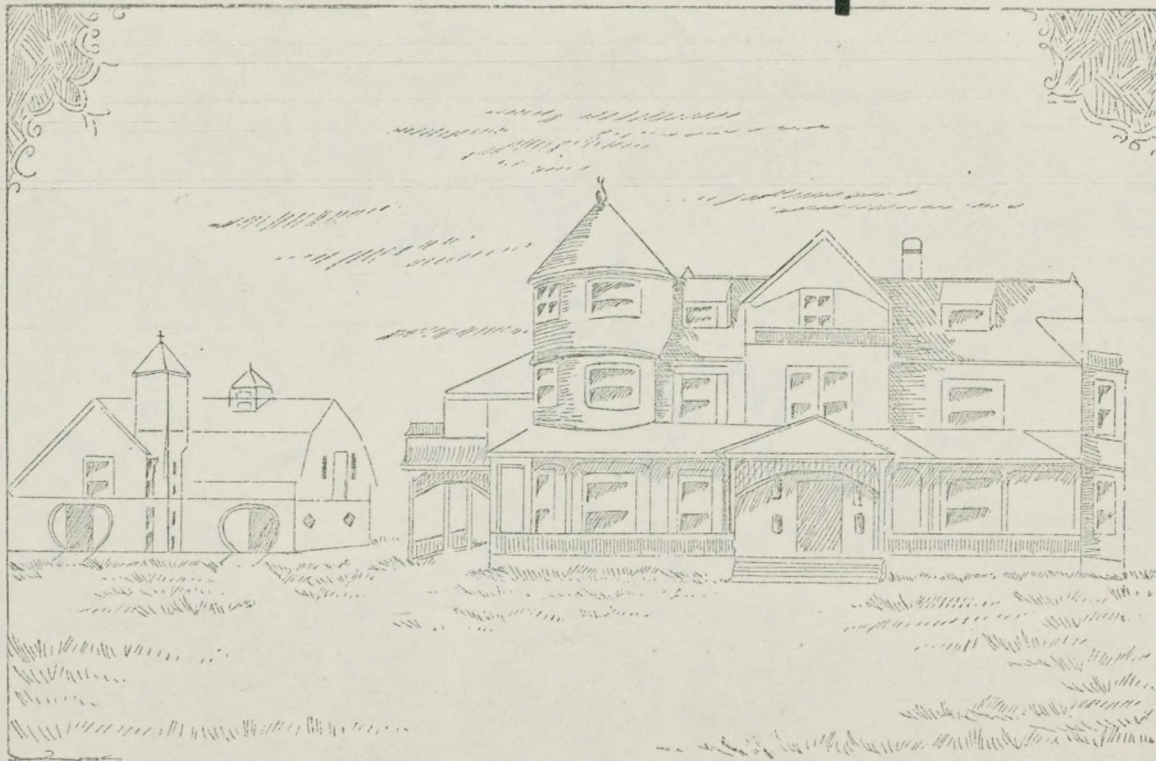


1893.

Mrs. Raymond D. Bickford
South Gouldsboro, Maine



WEST SHORE HOTEL



WEST SHORE CLUB HOUSE.



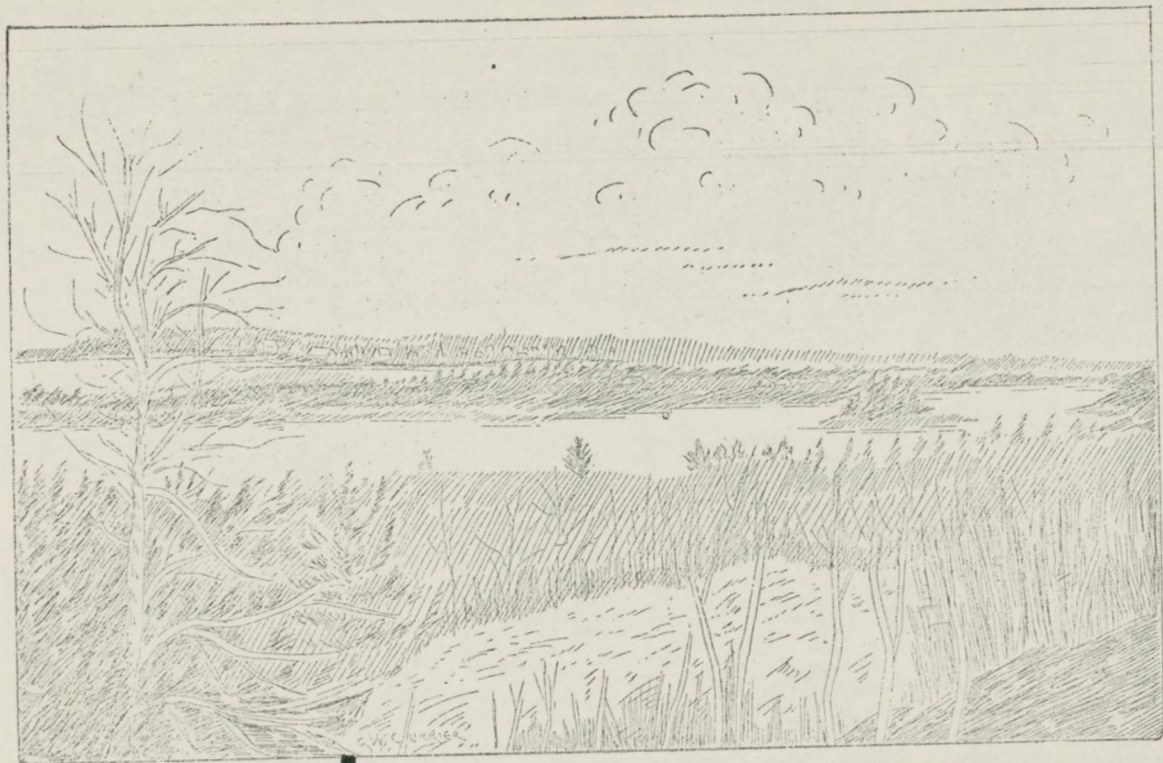
Frenchman's Bay has long been known as one of the most charming spots on the coast of Maine. Its shores are noted for their surpassing beauty, and are being encroached upon by the summer tourists more and more each year. Every one has heard of Bar Harbor and its surroundings, but there has been a decided tendency of late years to seek a summer home in the vicinity of that fashionable spot, and not be resident in it.

Bar Harbor is on an island possessing many beauties to be sure, but yet having its drawbacks. On the opposite side of the bay, twenty minutes' sail from Bar Harbor, a large tract of land has been secured, which will be improved and laid out as one of the most delightful summer places in that locality. This land lies entirely on the water front, and commands a view that cannot be excelled. It consists of six hundred and fifty-acres.

At Bar Harbor there are a very few shore lots, many of the summer residences being situated five miles or more back from the shore. At Gouldsboro every residence *will face the bay*, there being no

back land. There is nothing so delightful in selecting a summer home, as to know that one has certainly obtained as many advantages as possible. On the shore of Gouldsboro one can enjoy the delightful waters of Frenchman's Bay, and at the same time the beautiful country scenery that extends for miles into the State of Maine. As he retires at night he listens to the ripples of the water on the shore, and hears the drowsy sighing of the trees around him. The air is filled with health-giving properties, and one's sleep is as refreshing and restful as that of a child. This tract of land is owned by the West Shore Land Company, and every precaution has been taken to make this spot the most healthy and the most charming of any on the coast. This land is very productive, drainage is perfect, and the drinking water is supplied by Lily Pond, the water of which possesses many medicinal properties. Much of the land is high, being broken by ravines and mounds interspersed with rocks and rich foliage, all making a beautiful picture, which is charming to gaze upon.

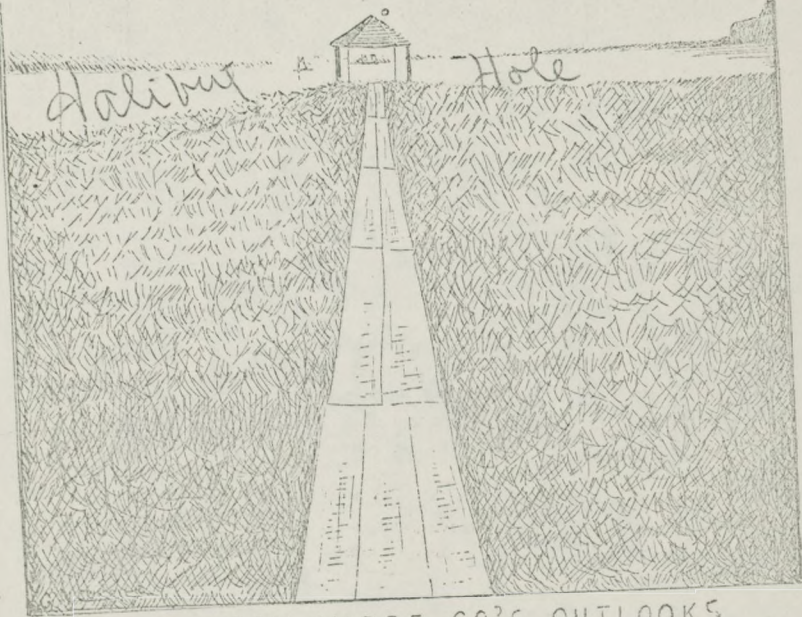
The drives about old Gouldsboro are unsurpassed, and extend along the coast for many miles. Excursions can be made to interesting points inland, and to the many islands in the bay. One of these islands near by is Stave Island, on which President Eliot of Harvard University has spent ten summers.



WEST SHORE VIEW

~~intro my map~~

Mr. Jordans Lookout



ONE OF WEST SHORE CO'S OUTLOOKS

Look-out on Jordan's Island

Called the Peasant Stand

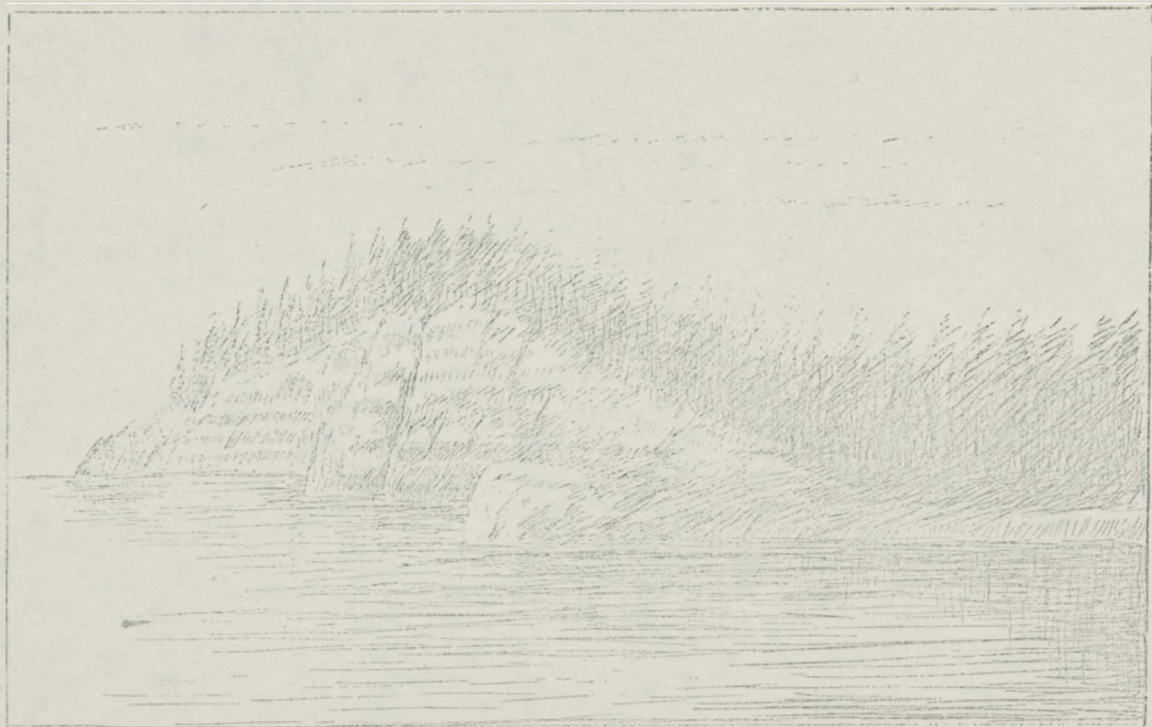
Steamers touch at Gouldsboro at frequent intervals, and the mail connections and means of communication with New York, Boston, Portland, and other places are well provided for.

From Jordan's Mountain a delightful view of the surrounding country can be had looking as far east as Nova Scotia and as far north, south, and west as the eye can reach. A gorge runs to the top of Jordan's Mountain, an elevation of 370 feet. This is a great natural curiosity. The company will build a magnificent hotel; plans are now in the hands of the architects, and no money will be spared to make it as modern and attractive as possible, the location being unsurpassed. Streets are already laid out and sidewalks completed. The streets are curved, thus giving greater beauty to the effect as a whole. The land lies along the shore most happily. A bar connects the shore with Jordan's Island, thus protecting the bay in this neighborhood from the angry sea and making a perfectly safe anchorage for yachts and other vessels. The length of shore frontage is 8,600 feet, the length of roads built 10,700. The company has engaged Mr. G. E. Simpson of Sullivan, one of the best-known surveyors in the State of Maine, to superintend the laying out of streets and house lots, retaining the most beautiful trees that abound on this land besides the natural foliage abounding on this property. The harbor is one of the best on the coast of Maine, pro-

viding safe sailing, abundant fishing, only a few minutes' sail to the fishing-grounds, and in all respects being the most desirable in all New England. Clams and lobsters are very abundant off this shore, and *fish are always waiting to be caught*. Fishes are also found in the numerous lakes on the mainland, lake trout predominating. Fishermen have been known to catch as large fish as any taken from the Rangeley Lakes. The locality about Mount Desert has become so widely known of late years that the mainland in its vicinity is being rapidly bought and improved. The traffic by the railroads has been phenomenal. The Maine Central Railroad carried passengers to Bar Harbor and vicinity in

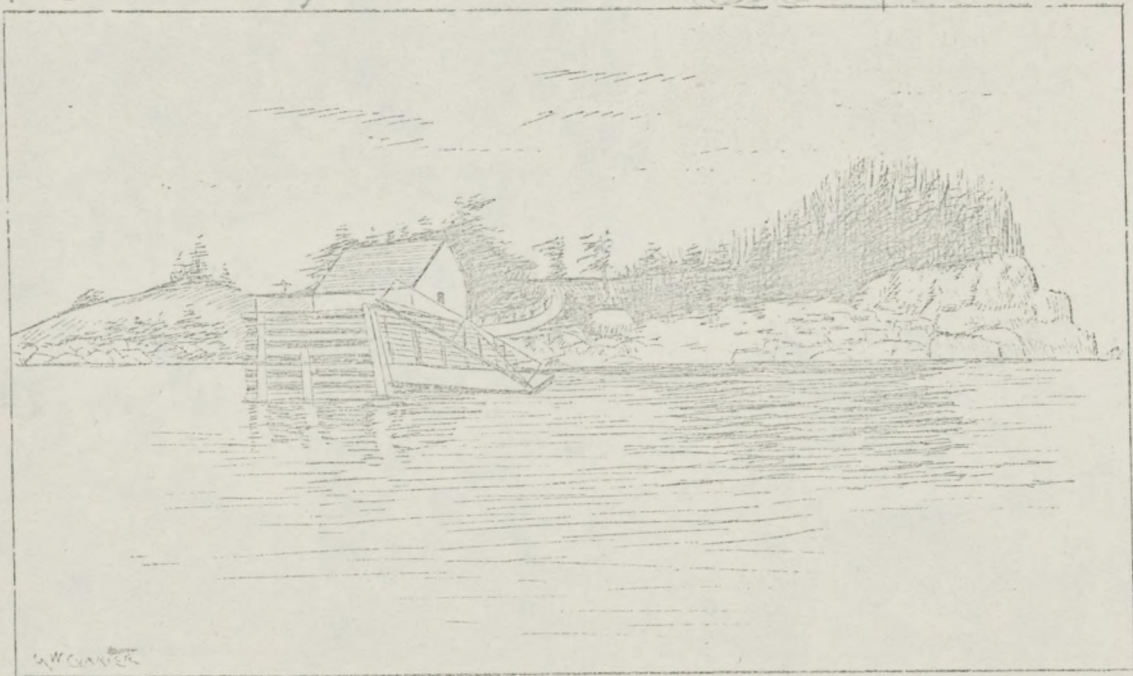
1884	11,043
1887	30,951
1888	55,342
1889	58,622
1890	61,890
1891	66,941
1892	72,910
1893	81,704

The daily line of the Boston and Bangor Steamship Company, and the steamship line running between St. John and New York, touch at Bar Harbor each trip and transfer to this region many thousand passengers, showing an increase each year in the popularity in which this noted section is held.



IRONBOUND ISLAND

The Wharf and Bath House on Jordan's Island



JORDAN'S ISLAND

The wharf and bath house

Grindstone Neck is a point of land that juts out into the bay and is located at the southern extremity of this tract of land. A ridge runs along the centre of this peninsula and is well built over by handsome cottages. The shores are rocky and present many beauties in outline and ruggedness. Many balsam firs are found on Grindstone Neck, also other small trees. The view from this point of land is very fine and the cottagers are most desirable people. The cottages have been built under restrictions as to cost and architecture, thus answering the best result as a whole and making a fitting terminus on the south to the property of the West Shore Land Company.

Schoodic Peninsula is another point of land which juts into the bay just south of Grindstone Neck, and from which a delightful view of the open sea can be had. The peninsula is also blessed with beautiful natural scenery, and it is studded with numerous eminences and dotted with luxuriant foliage. Another interesting place situated near this point of land and easy of access is Winter Harbor, which is a quaint village and derives its name from the fact that its bay has never been frozen over. This village is over one hundred years old, and was settled originally by some fishermen, and it is populated to day largely by their descendants. There is always a certain fascination about a fishing-town, especially

to those who have been accustomed to a large city or inland town the greater part of their lives. Here can be found a boat-building yard, fishermen's cottages, a public library, markets, country stores, barber shop, etc. The bay at Winter Harbor is very deep and is a charming sheet of water. There are many islands in and about its entrances, on one of which — Mark Island — is located the Winter Harbor lighthouse. There are a number of coves and creeks about this bay, which renders canoeing and boating particularly enjoyable. The celebrated dunfish are found on this coast, which have heretofore been considered a distinct species of the cod. They differ, however, from the common cod only in the circumstance of their being caught in and cured in winter.

CRANBERRY ISLANDS.

These islands lie a few miles east by south from Gouldsboro, and embrace Great and Little Cranberry, Sutton's and Baker's Island, and were attached to the town of Mount Desert until 1830, when they were incorporated. They afford good harbors, and are well located for the shore fishery.

JORDAN'S ISLAND.

This is the summer home of Horace W. Jordan, the president of the West Shore Land Company. It

is believed to have been named in honor of an ancestor, who was collector of several ports on the Maine coast. It comprises four hundred and fifty acres in extent. Game of all kinds abounds there. It is in close proximity to Ironbound Island, Stave Island, and Long Porcupine. Mr. Jordan has been offered fabulous sums for this property, but this gentleman has always declined. It has been the good fortune of his many friends to be annually entertained there.

HALIBUT HOLE.

Through this narrow pass the tides flow in and out between Ironbound and Jordan's Island. At certain stages of the tide the waters rush through here with a powerful current. There is no difficulty, however, in navigating the strait with safety, as the depth is of such an extent that large steamers and sailing vessels can pass through in safety.

The company will soon build a hotel, plans for which are now in the hands of the architect. No money will be spared to make it one of the best in the country.

WEST SHORE CLUB HOUSE.

This club house, as seen in frontispiece, is located on the southern end of the company's property. It is nearly new; contains sixteen large rooms; has all



FRENCHMAN'S BAY ME.

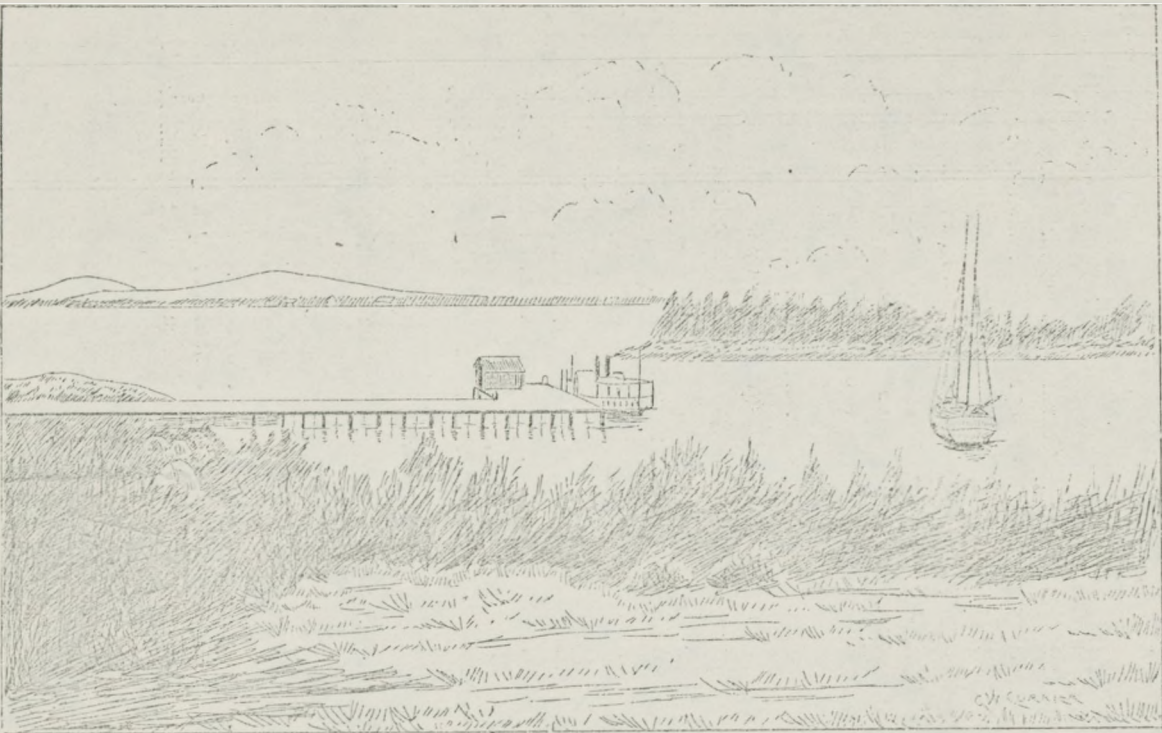
the modern improvements. The furnishings are elegant; location unsurpassed; charmingly located on an eminence, its broad piazzas commanding a magnificent view of the surrounding country, with the beautiful bay and the broad Atlantic in the distance. This building cost \$17,000. Club life can be enjoyed here as in no other locality.

SORRENTO.

About seven years ago a company was formed, a hotel built, and cottages were at once erected on this spot. Sorrento adjoins Gouldsboro, but is inland, and has grown to such an extent that few building lots remain. It is populated by well-known people from all parts of the country, who spend their summers here, among them being the Hon. Frank Jones, Gen. S. V. Benet, Hon. Daniel Lamont, Gen. A. W. Greely, and others. Much might be said of many adjoining towns on Frenchman's Bay, all in view of Gouldsboro on account of its altitude. The natural ovens at Lamoyne open in a solid rock, and are situated near the property of the West Shore Land Company.

FRENCHMAN'S BAY.

This important bay extends from the Atlantic about twenty miles inland and contains many fine harbors and beautiful islands. It is bounded west by Baker's

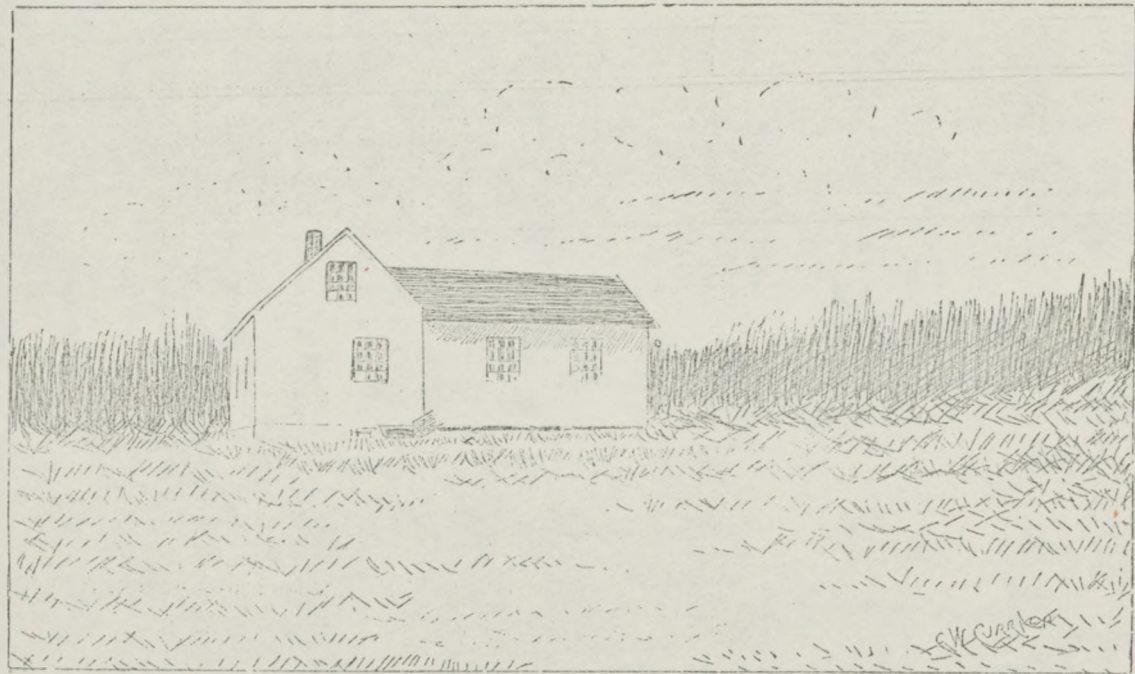


BOAT LANDING OF WEST SHORE LAND CO.

Winder Harbor

Island, one of the Cranberry group, and on the east by a peninsula in the town of Gouldsboro. The width of this bay from Baker's Island to Gouldsboro point is ten miles. It is surrounded by the towns of Eden, Trenton, Hancock, Sullivan, and Gouldsboro, and receives many valuable streams. It is one of the best retreats in a storm on the *American coast*, being easy of access and never obstructed by ice.

It is manifest that the West Shore Land Company has selected a most beautiful and desirable tract of land for settlement. It is surrounded by most attractive hamlets, country scenery, rocky shores, thriving villages, and it must be remembered it is located entirely on the water front. It is protected from the rough elements of the open sea, has safe anchorage for yachts and other sailing vessels, abundant fishing-grounds, clam beds, game and fresh water fish. It is in sight of Bar Harbor and the whole eastern portion of Mount Desert, Sorrento, and other places. It is centrally located, all points of interest being easy of access either by water or land. Every effort has been made to insure this locality becoming the most desirable on the coast. The West Shore Land Company has been organized under the laws of the State of Maine, having a capital of one million dollars. The officers are well-known business men and capitalists, who ask those who wish to secure a beautiful summer home to come forward and secure one or



STAVE ISLAND

Look Out on the Hill Above



the Indian Ground

THE "INDIAN GROUND"

more lots, realizing that it is not only a safe investment, but the future will show that the property will greatly enhance in value; and in no other locality will anything prove so remunerative to the buyer as to invest in this property. Great care will be taken to have it rival any summer watering-place in this country. Plans of the land can be seen at the company's office in Boston, and all information will be freely given. The well-known law firm of Wiswell & King has been engaged as attorneys, and the titles given will be a sufficient guarantee as to the clearness of the same.

“INDIAN GROUND.”

One of the great points of interest in this locality is the “Indian Ground,” located near the boat landing of the West Shore Land Company.

The Indians, in traditional times, before any white people settled in this neighborhood, selected this beautiful spot for their camp. It is well known that the Indians never failed to select *the best and most advantageous spot for their settlement*, and, from the fact that this “Indian Ground” was so long inhabited by the original Indian tribes, it is evident that the West Shore Land Company has made a most excellent choice for a most charming summer spot in which to spend the hot months each year. This “Indian Ground” has long been noted for the great

interest which people in neighboring localities have taken in their search for relics of those old historical times, and many persons have been rewarded for their labors by finding old implements of Indian warfare and employments, tomahawks, arrow-heads; and oddly fashioned stone implements have been found buried in the soil, and it is well known that the ground still holds many of these same interesting curiosities. One feature of this "Indian Ground" is the vast amount of clam shells, which lie ten feet deep, over a considerable extent of ground. What wonderful and enjoyable good old "clam bakes" by the salt-smelling and appetizing sea breezes these aborigines must have enjoyed on this picturesque and delightful shore!

