



The Norman Bird Flyer

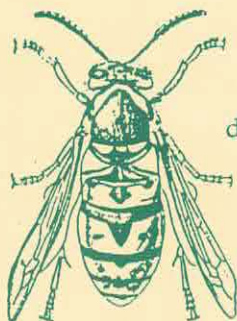
VOLUME NO. 14 ISSUE 2

A QUARTERLY NEWSLETTER

Summer Residents

Summer 1993

by Amy Bartlett Wright



Along our asphalt driveway, there is a short, steep, grassy slope planted with white pine trees. Several summers ago, we were concerned to see yellow jackets gathering around a small hole on the grassy slope close to where our young sons play on the driveway.

I was up early in the morning and could watch the wasps before their activity for the day intensified. The hole was the entrance to a colony in a hive underground. The asphalt provided a stable ceiling and the sloping ground to the east allowed something of a cutaway for access to perhaps an existing hollow place. Throughout the day, wasps leaving from the entrance flew in a direct route east; those returning followed the same route west, like a plane following the same runway for takeoff and landing. The wasps scattered into different flight paths when away from the runway area. As I watched the wasps and learned about their movements around the entrance, I found that if I stood behind their runway area, I could safely watch without disturbing them. The colony must have increased in size because there were many more wasps, their body hairs dusted with pollen, coming and going from this entrance hole in the grass as the summer progressed.

I felt the wasp activity was not a danger to us or our children playing in the driveway because we were directly behind their flight path to the entrance hole. I instructed my sons not to go near the wasps without me and play was forbidden on that grassy slope in any way that would cross the wasps' "runway" or flight path. I enjoyed watching them and did not want to interfere with their natural business of feeding, pollinating, raising young and attacking intruders.

Early one morning in mid-August I went outside to check on them. Their tiny entrance hole in the grass had been torn open! Soil, rocks, dirty comb, dead wasps and a few white larvae lay where the hive before had been so well concealed. There was no motion, no buzzing and no exciting anxiety of getting stung. There was a smell. A skunk smell, and tracks.

A skunk dug out the nest during the night, when the production of the hive was at its height, to eat the larvae, ripe in their chambers. No doubt the wasps swarmed the skunk in a great effort to sting him and save the colony, but the skunk's fur is thick and the wasp's stings don't reach the skunk's flesh. He dug out the comb, swallowed the plump grubs and probably a few adults, too. Skunks aren't bothered by stingers in their stomachs.

So, the wasp colony went the way of nature's cycle. The following summer, bumble bees recolonized that hollow space under the driveway. I watched them through that summer without disturbing them. Again a skunk came in August and the hollow place has been vacant all winter, as far as I know. •

The First Caterpillar Guide

"In my many walks outdoors, ever since I was young, I have watched caterpillars and wondered what they would become as butterflies or moths. Sometimes I would pick them up and take them home, put them in a jar with a little grass and a loose top, then wait. Some would pupate and later become a moth or butterfly. So that is what that caterpillar was! I could look up the adult in many field guides but the caterpillar was lost."

Few of the butterfly guides show adequate material on caterpillars. Seeing a need for an easy guide that would focus primarily on identifying the caterpillar form of common butterflies and moths, Amy Wright has written and illustrated the first general guide to caterpillars, Peterson First Guide to Caterpillars, published by Houghton-Mifflin. This guide will be available in our Sanctuary Store in May. 125 common species of caterpillars are illustrated, with their adult forms, in color. All the food-plants are named and are also illustrated. The author reared many of the caterpillars and the adults in her home in Portsmouth.

"I want children and gardeners to think of caterpillars being as beautiful and vital as the butterflies and moths they become."

Amy is a free-lance scientific illustrator. She studied scientific illustration at the University of Maryland and Rhode Island School of Design and worked at Smithsonian's Museum of Natural History in Washington D.C. Her illustrations of wildlife, insects and gardening have been published in many books including The Diversity of Life, the most recent book by Harvard University's E.O. Wilson. Amy's illustrations can also be found throughout the Sanctuary's Trailside Museum.

Director's Notes

It's a boy!! Congratulations and best wishes to the Sanctuary's Education Coordinator, Lisa Pritchard, and her husband Ken Dolbashian on the birth of their son Lukaia Cree Edward Dolbashian. The little guy with the big name was born on January 7th. About the time you receive this newsletter, Lisa will be returning from maternity leave to her job part-time at first as she balances motherhood and her career.

As I write these notes a harbinger of Spring, the Red-wing Blackbird, just back from the tropics, is singing from atop a hedgerow across the field. The witch-hazel out in the yard has been blooming for a week, and our volunteers are putting out the tree swallow nesting boxes.

As the swelling red-maple buds redden the branches and prepare to burst forth, the Sanctuary board, staff and volunteers are busy in anticipation of a very active Spring and Summer season. The calendar on the wall shows a full schedule of school field trips. Birds and Breakfast, scheduled for May 16th, will also be the opening day for our revitalized gift shop, now called the "Barn Owl Shop." (Please see insert)

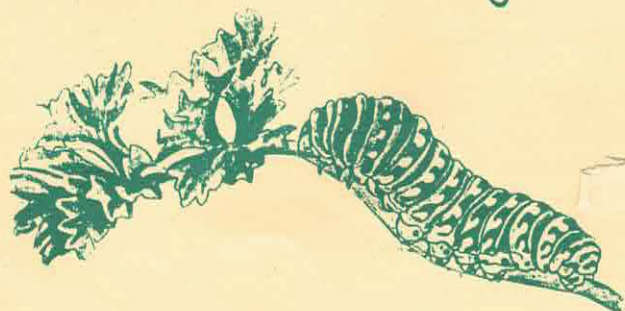
Our Annual Meeting is tentatively scheduled for June 17th. We hope to make this a grand event; we have also planned the "Opening" of our Trailside Museum in the Barn Loft. All members, old and new, are encouraged to attend. More information will be forthcoming.

On the trails this Spring you'll meet some new faces (18 as of now) who are members of the Volunteer Ranger Corps, a new program we are coordinating along with the US Fish and Wildlife Service. The Rangers will assist with visitor information and safety as well as wildlife monitoring at both the Sachuest Point Refuge and the Sanctuary. Additional Rangers are needed. Please call us if you are interested.

So stop by soon. Attend our Spring programs. Before you know it, the whole place will be in full bloom, once again.

Best Wishes,

Larry



Family Programs

Whalewatch with the Director of the Center for Coastal Studies

Saturday, June 12. 12:30-4:30 pm. Join us on this four-hour cruise to search for Humpback, Minke, and Right whales off of the Cape Cod coast. We are privileged to have Dr. Charles Mayo, the Director of the Center for Coastal Studies, with us to describe the biology and behavior of the whales we will be seeing. Whalewatch leaves at 12:30 pm, but participants must be there by noon. Pre-registration and pre-payment required by Saturday, May 29th. Carpools will be leaving from NBS around 9 that morning. Please call for information if you are interested.

Children are welcome but must be accompanied by an adult.

Limit: 30

Fee: \$20 (\$16 NBS Members)

Pre-registration and pre-payment required.

Animal Origami!!

Offered for the first time ever, this class will teach the traditional oriental art of paper-folding. But with a twist! Instructor Susan Kevin will begin with a brief history of Origami. Then, as the class folds each animal, Susan will discuss the natural history of that animal. In each two hour session participants will fold about four animals. Three classes will be offered. Different figures are folded each session but no experience is necessary for any of the classes. Children 7 and under

must bring a parent (No charge if the parent doesn't want to fold). Materials are provided. Susan will bring her books and will discuss sources for materials for those who are interested in pursuing origami.

Sign up for all three classes and save two dollars! Non members, pay only \$16, members pay only \$10.

1) Slimers and Slitherers

Sunday, May 23. 1-3 pm.

Usher in Spring by learning to fold a tadpole, frog, snail and snake. No experience necessary.

Limit: 20

Fee: \$6 (\$4 NBS Members)

Pre-registration is required.

2) Birds and Bugs

Sunday, June 6. 1-3 pm

This class will fold a butterfly, traditional crane, swan and bug. No experience necessary.

Limit: 20

Fee: \$6 (\$4 NBS Members)

Pre-registration is required.

Pre-registration is required.

3) Birds and Bugs

Sunday, July 11. 1-3 pm.

This class will fold a dragonfly, bee, double crane, and pelican. No experience necessary.

Limit: 20

Fee: \$6 (\$4 NBS Members)

Pre-registration is required.

Remember, sign up for all three classes and save two dollars!!!

Animal Olympics

Saturday, July 10. 10:30 am-12 pm

Can you out-jump a kangaroo? See farther than a falcon? Hop higher than a flea? This program is a chance for you to find out!! Parents are encouraged to join in the fun with their children. Kids eight and over can come on their own. But parents, its gonna be fun!!! This program appeals to our curiosity about animal abilities compared to our own. Stations will be set up in the big field where kids and their parents can try out their skills.

Limit: 15.

Fee: \$4 (\$2 NBS Members)

Pre-registration is required.

Springtime Natural History Walk

Saturday, May 22 1-3pm

Experience the renewal and resurgence of life that Spring brings to the Sanctuary. Smell the Spring air, listen for the songs of courting birds, and enjoy new wildflowers as the group discovers them along the trails. Bring binoculars and wear sturdy shoes.

Fee: \$5 for non-members (\$3 for members)

Limit: 15

Pre-registration required.

Map and Compass

Saturday, May 29 10 am -12pm

Learn how to use a map, compass, and the two together. The class will end in a scavenger hunt where the participants use their newly-learned skills to find a series of clues throughout the Sanctuary. Participants must be 12 years or older.

Limit: 10

Fee: \$6 (\$4 NBS Members)

Pre-registration required.

The Sanctuary will provide compasses for the day.

Pre-payment and pre-registration are required for all classes unless noted otherwise !!

Adult Programs

Baskets with Sharon Culberson

Williamsburg Basket

Saturday May 1 and 8 1-4 pm.

This is a new design offered by Sharon for beginning or experienced basket-makers. A practical basket with a 10" square bottom, it has handles that flare out

toward the top. This basket is sturdy enough for all of your garden goodies.

Fee: \$25 (\$22 NBS Members)

Limit: 12

Pre-registration is required.

Small Herb Basket.

Saturday, June 5 1-5 pm

This is a small, round-frame basket with a handle.

Suitable for beginners. One session.

Fee: \$24 (\$22 NBS Members)

Limit: 12

Pre-registration required.

Twill Weave Market Basket

July 17 and 24 1-5 pm

This is a sturdy basket for carrying your vegetables fresh from the garden. Some experience is helpful. Two Sessions.

Limit: 12

Fee: \$36 (\$30 NBS Members)

Pre-registration required.



Geology Walk

Saturday, May 1 1-3 pm

Have you ever wondered how our three ridge formation (unique in North America) came to be? Join Naturalist Hap Morgan on this walk and explore the geology of the Sanctuary. Learn about the fascinating history of Hanging Rock and other formations. Please wear sturdy shoes.

Fee \$5 (\$4 NBS Members)

Limit: 10

Pre-registration is required.



Sunset and Full Moon Walk.

Friday, June 11th. TIME TBA.

Our senses come alive as we take a Spring sunset walk through the Sanctuary accompanied by Naturalist Hap Morgan. Experience a sunset from atop hanging rock and feel how the wild night creatures awaken from their days sleep. Watch as the full moon rises into the night. Bring your five senses and a flashlight.

Fee: \$5 (\$4 NBS Members)

Limit: 10.

Pre-registration is required.

Spring Migration Birdwalks

Sunday Mornings 8am

The best time to see birds at NBS is during the Spring migration and early Summer courting season. During migration, a wide variety of song-birds that are "just passing through" make an appearance at the Sanctuary and are most visible during the first period just before leaves reach their full size. Also during this time, species that nest here are actively courting and defending their territories. Join Sanctuary Director, Larry Taft, for these Sunday morning walks.

Fee: Free

Pre-registration is not required.

Medicinal Herb Walk: An Introduction to Wildcraft

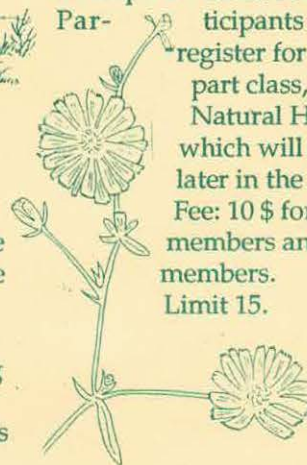
Tuesday, June 15 6:30-8 pm

Herbs have been a part of traditional folk medicine since the beginning of time. Naturalist and Herbalist Hap Morgan, in conjunction with Swinburne School, will lead an herb identification walk around the fields and woodland edges of the Sanctuary, teaching how to identify wild herbs which may be used for simple home remedies.

Participants may also register for the three part class, "Herbs and Natural Healing" which will take place later in the summer. Fee: 10 \$ for both members and non members.

Limit 15.

Pre-registration is required.



Herbs and Natural Healing: An Apprenticeship with Hap Morgan

June 22, 24, and 29th 6-8 pm

This popular, three-part class will teach the fundamentals of herbalism, the medicinal uses of plants, and the identification of local plant species. Techniques of wildcrafting, gathering plants, and preserving them will be emphasized with the help of field guides. Participants will make herbal salve, a liniment, and a blend of tea for simple home remedies. Please bring a small widemouth jar, a 1 ounce bottle, and a small bag or jar for the tea.

Fee: \$35 for both members and non members. There is also a \$6 materials fee.

Limit: 10

Pre-registration is required.

Animal Pause: Injured Wildlife



Its almost Spring and the calls about injured or orphaned wildlife have started coming in. "There is a bird flapping around in our front yard. It looks like it has a broken wing and can't fly. Can I bring it in?" The Sanctuary gets this kind of call all of the time, and generally, as much as we would like to, we cannot take the animal in.

There are several reasons why the Sanctuary does not take injured wildlife. We are a wildlife refuge, not an animal hospital. Rehabilitation facilities, when properly outfitted, are expensive, requiring a licensed veterinarian or rehabilitator, treatment rooms, and rehabilitation cages.

Wildlife rehabilitation also does not have a high rate of success. Even after expert care, most injured wild animals do not survive after being released. Often contact with humans worsens the animal's condition rather than improves it. It is hard for anyone to ignore an animal if she sees it suffering. As RI

Audubon states, : "Although alien to our human way of thinking, nature provides for the survival of the species rather than the individual, and the fittest tend to be survivors. Because the human race is endowed with a great capacity for caring about others, letting nature take its course is a very difficult concept for most people to accept."

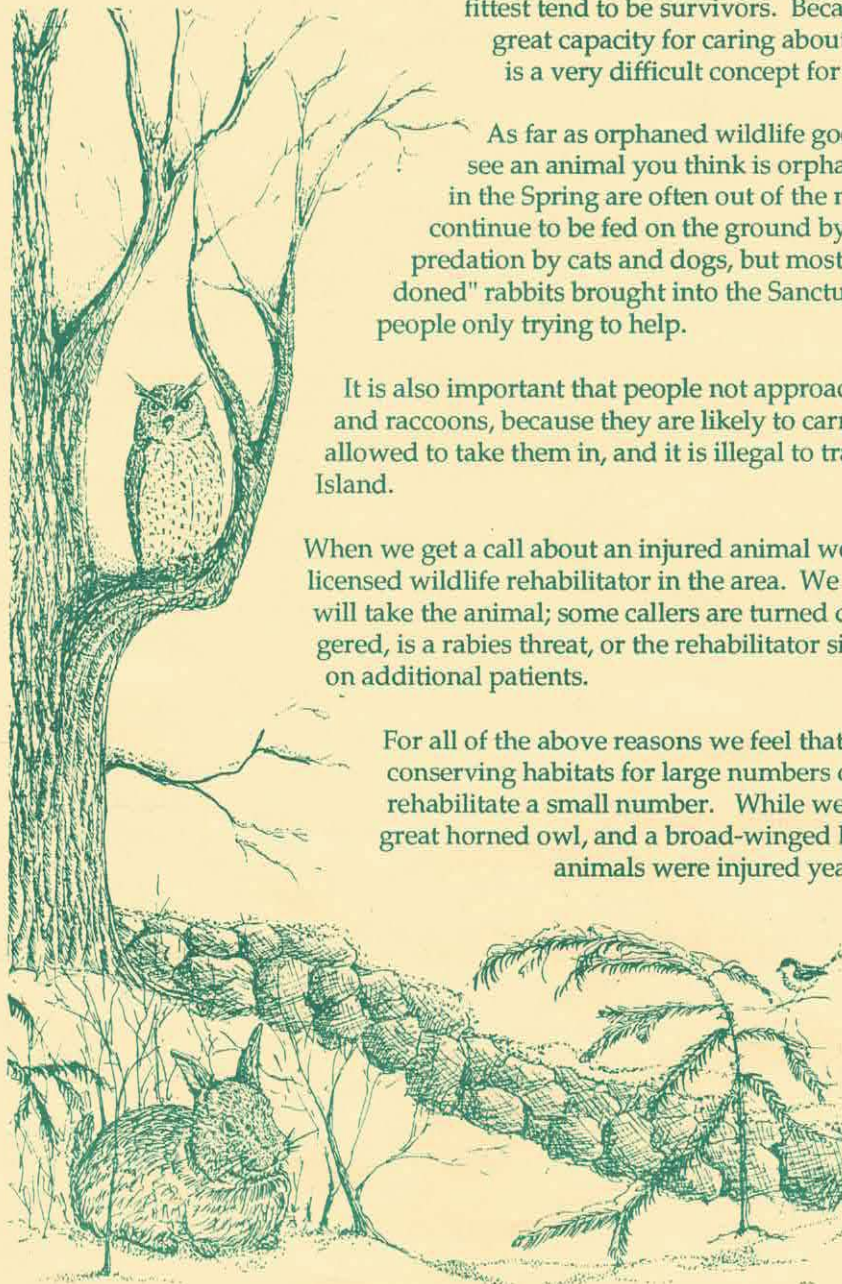
As far as orphaned wildlife goes, the rule of thumb is that when you see an animal you think is orphaned, it probably isn't. Fledgling birds in the Spring are often out of the nest before they are ready to fly, and continue to be fed on the ground by their parents. It is true that they risk predation by cats and dogs, but most manage to survive. Many "abandoned" rabbits brought into the Sanctuary are often taken from their nests by people only trying to help.

It is also important that people not approach mammals, especially skunks, foxes and raccoons, because they are likely to carry rabies. Rehabilitators are not allowed to take them in, and it is illegal to trap or transport these species in Rhode Island.

When we get a call about an injured animal we will give the caller the number of a licensed wildlife rehabilitator in the area. We cannot guarantee that the rehabilitator will take the animal; some callers are turned down because the animal isn't endangered, is a rabies threat, or the rehabilitator simply does not have the space to take on additional patients.

For all of the above reasons we feel that our limited resources are better spent conserving habitats for large numbers of animals, rather than attempting to rehabilitate a small number. While we do care for two red-tailed hawks, a great horned owl, and a broad-winged hawk, we do so only because these animals were injured years ago and can never be released.

These injured raptors are not the focus of our Sanctuary. We exist to provide a variety of habitats for island species, and we provide trails so that visitors may safely explore and experience the wonder of woods, fields and streams in the ever changing seasons.



VOLUNTEER NEWS

The Sanctuary is lucky to have many wonderful people who donate their time and talents. We have welcomed Susan Kevin, Hanif Christopher, Megan Decke, and John Carroll as our animal caretakers, and Kim Richardson has donated many hours to help with details in our office. Lauren Carson and Tim Moore are working to make our membership drive a success. Finally, be sure to look for the wonderful results from the work of Morag Charmatz, Chris Thomas, Jocelyn Sherman, Anne Damon, Candy Powell and Betsy de Leiris in our newly refurbished store. Thank you to all the people listed below for your donations of time, talents, and food for the animals...

Mailings and Office Work: Fran Holmes, Kim Richardson, Susan, Samantha and Nicholas Logler, Jill Howard, Chris Barry, Yong Marhoffer, Alicia Spinner, Doris Midgley, Ben and Bobbi Lamont, Linda Everitt, Sandy Otilige, Hodges Badge Company.

Animals: Rachel Wood, Emily Leslie, Hera Tar, Casey Kirwin Tom and Sam Richter, The Cookie Jar, Gail, Mike, Ian and Merideth Shepherd, Pat Callahan, Sheila O'Brien. We have had to say goodbye to several animal caretakers this season. Many thanks to Dick Sadler, Jennifer Dowell, Matt Oakley, Landon Merrill, and Laura Mazurski. Our animals will miss you.

Education: Marilyn Lyell, Marybeth Hunte, Bobbi Lamont, Helene Pritchard, Samantha Logler, Lauren Streitfeld, Hilary Ward, Laura Oakley, Kay Kozinski, Jane Barber and Glenna McCaffrey, and Susan Kevin.

Donations: Thank you to Judy Burns for her donation of 2 office chairs and to Potter Animal League for their donation of a waxer.

VOLUNTEER OPPORTUNITIES

Would you like to volunteer here at NBS? If so, look below for a list of possibilities in the months ahead. Please call the Sanctuary for more information.

Bakers and Workers - We need people to bake breads, muffins, coffee cakes, etc. for our Birds and Breakfast fund-raiser on Sunday, May 16th, as well as people to work that day. There are many different jobs and shifts available.

Gardeners - Our gardens will be in full bloom soon. Volunteers wanted to weed and water our perennial, herb and shade gardens. A great activity for the whole family! There will be an training session and organizational meeting for all those interested on Sunday, April 18th at 1:00 pm.

Visitor Reception/Office Volunteers - We are always in need of people to help out in the office/store on weekends, answer the phone, greet visitors and collect trail fees. If interested, please attend our training session on Sunday, April 18th at 3 pm.

Rangers

In cooperation with the United States Fish and Wildlife Service, the Sanctuary has formed a volunteer ranger corps. The corps hikes the trails of the Norman Bird Sanctuary and Sachuest Point to assist with visitor information and safety, trail maintenance and wildlife surveys. **The next training session is scheduled for Sunday April 25th at 1pm.** If you are interested in volunteering, please call the Sanctuary office.



JOB OPPORTUNITIES

Teacher Naturalist Assistant

One very important "TNA" will be needed to assist Teacher Naturalists during the 1993 summer camp season. Interested applicants should be at least 15 years old, enjoy working with small children, and love to explore nature. The camp runs from June 21 -to August 27, 1993 (includes a training week). Wages are \$4.45 per hour. Call or stop by to pick up an application. Application Deadline: May 8th, 1993.

Youth Conservation Project

NBS is now accepting applications to fill four to six openings. The participants will work in a crew with 4-6 other youths doing trail maintenance and wildlife conservation projects for three weeks. Applicants should be at least 14 years old and be able to perform vigorous outdoor work. Wages are \$4.45 per hour. Call or stop by for an application. Application deadline: May 8th, 1993.



Children's Programs

Spring Celebration

Wednesday, May 19 12-2pm

3, 4, and 5 year olds, join Marilyn and Marybeth for a hike and a picnic in the woods. Kids, please bring a parent. Fee \$4 (\$2 for NBS Members) Limit: 15 children. One adult can be responsible for up to two children. Pre-registration required.

Down to Earth Day: Explore the Shore

Sunday, May 2nd 9:30 am-2pm

Join us for this day of seashore adventuring. We will hike from the Sanctuary to the nearby coast line to explore the habitats and discover the inhabitants of the rocky and sandy shores. We will follow the tides and our noses during our shoreline play time. We will supply buckets, shovels, strainers and nets. You supply sunscreen and old shoes. Bring a bag lunch and a drink. A mid-morning snack will be served. Limit 8. Grades 2-5. Fee: \$15 (\$12 Members). Pre-registration required.

Down to Earth Day: Marsh Mucking

Saturday, June 5th 9:30 am-2 pm

This is your chance to go slurping through our swamps, plopping through our ponds, and mucking through our marshes. Hands on. Or should we say "feet-in?" Wear old clothes and be prepared to get muddy. Bring a bag lunch and a drink. A mid-morning snack will be provided. Grades 2-5. Limit :8 Fee: \$15 (\$12 Members). Pre-registration required.

.....

Garden Club Calendar (for those already signed up):

Garden Harvest Party: Saturday, June 12th. 3-5pm

Harvest peas, lettuce, and broccoli while soaking up the sunshine!

Fun Day in the Garden: Sunday, June 20th. 10:30 am-12:00 pm.

Bugs, Bugs, Bugs. A garden wouldn't be complete without its own selection of creepy crawlers. Play in the dirt and help us look for critters that might be getting into our veggies.

Fall Veggie Planting: Sunday, July 18. 2-4 pm.

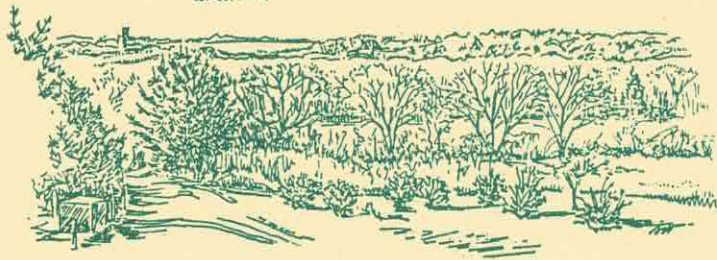
Veggie Harvest Party: Sunday August 22nd. 2-4 pm.

.....

Nature Journaling with Clare Walker Leslie

We are sorry to announce that this program has been postponed until the Fall. More details TBA.

Mud Season



Dear Friends,

Last September I discovered the new trail carved during the summer through the Gray Craig property. For a few months, I wandered across the wetlands and up to the ridge, enjoying the quiet of the woods undisturbed by other hikers. We are creatures of habit, and migrate to those vistas with which we are most familiar. I learned as the autumn unfolded to appreciate the new trail as one of the real jewels in the treasure that the Sanctuary is to me. My children and I discovered the oddities of caddis fly larvae in the brook, we thrilled over the palate of fall colors, and we lost count of the waterfowl sheltering in the wetlands and ponds. And I continued, through the winter, to enjoy solitary walks and the peace that comes with that quiet time.

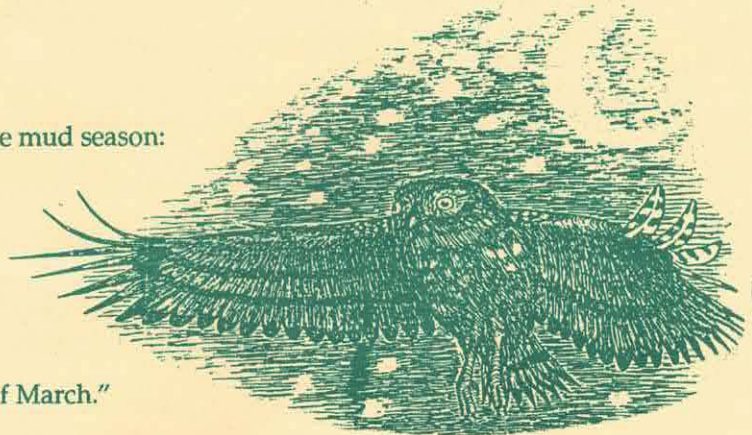
I often hear folks say that the Sanctuary offers its bounties chiefly to families with young children. As the children grow, some families forget the richness of its offerings, reminded only at the festive Harvest Fair or the ritual welcoming of Spring at Birds and Breakfast. Every month of the year our own staff, enriched by the talent from the region, offers stimulating programs for adults: Native American traditions and culture, astronomy, migratory birds, wildlife tracking, even rock climbing for those with less of a fear of heights than I. One of the rewards of participation is the warmth of friendship generated through shared interests.

Everyday of the year, the trails of the Sanctuary are enjoyed by folks of every age. In a society that stresses consumption, development and high technology, the Sanctuary has protected an island of 450 acres of diverse habitats, and offers us tranquility, a renewal of spirit, moments of beauty undisturbed by the hustle and bustle of our daily lives.

We are undertaking our first-ever membership drive, to share our hidden treasure with those in our communities who may not know the Sanctuary, or with those who thought the time in their lives had passed when the Sanctuary had something to offer them. Please give us a call if you have friends, perhaps those new to the community, who would cherish those special delights hiding in the trails of the Norman Bird Sanctuary; we'd love to send them an invitation to join us. Even better, give a membership to your friends or family. We depend on your support to allow us to preserve this treasure, and to offer quality programs that appeal to every age.

Robert Frost described the unpredictable nature of the mud season:

"You know how it is with an April day
When the sun is out and the wind is still,
You're one month on in the middle of May.
But if you so much dare to speak,
A cloud comes over the sunlit arch,
A wind comes off a frozen peak,
And you're two months back in the middle of March."



It's that time of year. But the magic is already unfolding in the sheltered corners of woodland, meadow, and marsh. I'll look for you on the ridge as I welcome back Spring.

Betsy

Betsy Grossman deLeiris
Chairman, Board of Directors

Pre-registration and pre-payment are required for all classes unless otherwise specified !!

Program Registration

Please complete and return with payment for program registration. If you need more space for additional registrants, please copy this form .

Name: _____ Grade: _____
Address: _____ Age: (if child) _____
Town: _____ Phone: Home: _____ Work: _____

	<u>Program Title</u>	<u>Date(s)</u>	<u>Program Fee</u>
1.	_____	_____	_____
2.	_____	_____	_____
3.	_____	_____	_____

NBS membership:

To become a member or to renew membership, please check appropriate category and include dues in the registration check.

☐ New ☐ Renew ☐ Indiv. (\$20) ☐ Family (\$30) ☐ Contributing (\$35)
☐ Sustaining (\$50) ☐ Institution (\$100) ☐ Patron (\$100)
☐ Supporting (\$250) ☐ Benefactor (\$500) ☐ Life (\$1000)

Please make checks available to Norman Bird Sanctuary. TOTAL AMOUNT ENCLOSED: _____
Send to: NBS
583 Third Beach Road
Middletown, R.I. 02840

Parent Authorization Emergency Form

For children ages 16 and under attending NBS program,
parents must complete the following:

Child's name : _____
Parent or Guardian : _____
Phone Number(s) where we can reach you during program hours: _____

Neighbor or Relative: _____ Phone: _____
Doctor: _____ Phone: _____
Allergies/Medications/Special Needs: _____

Waiver: In the event that I cannot be reached in an emergency, I hereby give my permission to the Norman Bird Sanctuary's staff or medical personnel to take emergency measures as necessary.

Parent Signature: _____ Date: _____

BIRDS & BREAKFAST

Sunday, May 16th



**birdwalks
start at 6:30**

breakfast seatings
7:30, 8:30, 9:30, & 10:30
adults 5⁰⁰ children 3⁰⁰

Reservations Suggested
846-2577

Ticket Information

Please send me adult tickets and children's tickets for the NBS Birds and Breakfast 1993
(Adults: \$5; Children, ages 3-12: \$3)

My preferred breakfast seating is 7:30 8:30 9:30 10:30 (Please check first and second choice)

☐ I would like to donate to be raffled at Birds and Breakfast 1992.
Please call me at during these hours .

Name: Phone #:

Address: State: Zip:

Amount Enclosed \$ Please make check payable to the Norman Bird Sanctuary. Send to NBS 583 Third Beach Road, Middletown, R.I. 02840
(Tickets will be mailed to the address above through Wed., May 12. After which, we will hold them at the door for you.)

What's Happening in the Rest of Rhode Island??

THE NATURE CONSERVANCY IS SPONSORING A NUMBER OF EVENTS THIS SPRING AND SUMMER...

Earthday Cleanup at Goosewing Beach and Fogland Marsh Saturday, April 17th 10 am.

Weekly Birdwalks at Goosewing Beach Call TNC at (401) 331-7110 for more information.

Numerous birdwalks on Block Island Bioreserve Known for its beautiful beaches, quaint town, and fabulous birding, Block Island has been named one of America's "Last Great Places." Call TNC Block Island Field Office at (401) 466-2129 for more information.

OTHER EXCITING EVENTS...

Second Annual Bird Paraphernalia Show Opens Memorial Day Weekend, May 31st, and runs throughout the summer. This show features locally-made crafts with a bird theme, including hand-made bird houses, paintings, and pottery bird-baths, and will be held at Newport's "Handmaids" located at 128 Spring Street. For more information call "Handmaids" at 849-0732.

Rhode Island Habitats Sampler: A Special Program for Teachers Interested in gaining some new and exciting ideas for improving your science curriculum? Want to dive into a freshwater or marine environment or wander in a Rhode Island forest? The Rhode Island Habitats Sampler is a chance to do these things and more. Each two-part section has a classroom and field trip component. Try one or try them all! **Where:** URI Environmental Education Center, W. Alton Jones Campus, West Greenwich. **When:** Thursdays, 4-7 pm. **Course Fee:** \$47 per section or \$186 for all four sections. Please register through URI. For information call 792-6211.

Section 1: Global Ecology. April 22 & 29. Instructor: Keith Winsten, Curator of Education at Roger Williams Zoo

Section 2: Field and Forest. May 6 & 13. Instructor: Larry Taft, Director at the Norman Bird Sanctuary.

Section 3: Ponds, Streams and Wetlands. May 20 & 27. Instructor: Lori Ross, Education Specialist for RI Audubon.

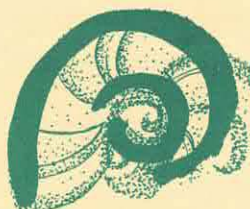
Section 4: Marine Concepts and Coastal Creatures. June 3 & 10. Instructor: Elizabeth Gibbs, Education Writer for RI Sea Grant.

Aquidneck Island Earth Day

Saturday, April 24 10 am-1 pm: There will be a number of beach cleanups in Newport, Middletown and Portsmouth. Come join local efforts to keep our beaches clean!

Saturday, April 24 Noon- 4 pm: Local environmental organizations will have display tables set up in Touro Park. There will be live acoustic music, games and food. So come join the fun and help celebrate Earth Day!

For more information call: Newport Clean and Green at 848-7720



DEM Grant for Integrated Pest Management

NBS has recently received a grant from the RI Department of Environmental Management for Integrated Pest Management (IPM) in our Children's Garden. IPM is an attempt to reduce our reliance upon chemical pesticides.

Sponsor a Child

Each year, NBS members have graciously sponsored needy children who would benefit from a full week at Nature Day Camp, (grades K-4) or Summer Challenge (grades 5-7) during the summer months. Agencies and schools, including Child and Family Services, Project Head Start, the Jamestown School and Gaudet Middle School have helped us locate these children. If you or your business wishes to be a sponsor for one, or many of these children, please enclose a check for the member's fee per child, specifying Nature Day Camp or Summer Challenge and send care of NBS Summer Camp Sponsor Fund, by **May 15, 1993**. Your generosity will be appreciated.

In Memory of Harriet J. Phelps

Thank you to those who have donated money in memory of Harriet J. Phelps: Elizabeth Morris Smith, Mildred House, Eric Derleth, Cynthia House, Edith Loeb, and the Preservation Society of Newport County.

Norman Bird Sanctuary
583 Third Beach Road
Middletown, RI 02840



The *Norman Bird Flyer* is published quarterly by the Friends of the Norman Bird Sanctuary, a non-profit corporation organized to support the mission of the trusts established under the Will of Mabel Norman Cerio. Our mission: to preserve the 450 acre Norman Bird Sanctuary for the protection of animals and birds and for the enjoyment of the public; to assist the Trustee(s) in the overall management and development of the Sanctuary; to conduct programs for children and adults in environmental education and natural sciences; to work with individuals and groups in the region in the preservation of natural habitats and open space.

Trustee: Rhode Island Hospital Trust National Bank
Board of Directors: Betsy deLeiris-Chairman, Dickson Boenning-Vice Chairman, Paul Raducha-Treasurer, Charles Moore-Secretary, Larry Allen, Cheryl O'Neil Fisher, Thomas Gunzelman, Katherine Irving, Alan Libby, Candace Powell, Ray Rogers, Gay Sheffield, Jocelyn Sherman, and Julie Toland.

Executive Director: Lawrence Taft
Education Coordinator: Lisa Pritchard
Naturalist: Hap Morgan
Office Manager: Sue VanDerhoof
Caretaker: Matt Bensen
Education Intern: Ruth Goldstein

Address: 583 Third Beach Road, Middletown, RI 02842
(401) 846-2577

Hours: 9am-5pm Tuesday through Friday until Memorial Day.
Memorial Day-Labor Day: 9am-5pm EVERY DAY.
Please, no dogs, horses, or bikes. Thanks.

Printed by PDQ on recycled paper with soy-based ink.

Graphics by UMD students under Bob Barry, Amy Wright, or Lucia deLeiris

Non Profit Org. US Postage Paid Newport RI 02840 Permit No. 43
--

Or Current Resident

Norman Bird Sanctuary Nature Day Camps 1993



About the Norman Bird Sanctuary...

Created in 1949 at the bequest of Mabel Norman Cerio, the Norman Bird Sanctuary is a 450 acre wildlife refuge and environmental education center. The Sanctuary is known throughout the region for its geographical features and for the diversity of its natural habitats.

While the protection of native plant and animal communities and the preservation of the unique land forms found in the refuge are our foremost concerns, just as important is the sharing of this natural resource with our visitors. Through educational programming and summer camp experiences, we hope to enhance your child's appreciation of the natural world.

About our Summer Camps...

Our Nature Day Camps are created for children who are curious about the natural world and who love to learn through exploration. As always, we are looking forward to a summer full of natural learning and the joy that comes with its discovery. We invite your child to join us!

A few scholarships are available each year for children of families with limited economic means. If you are interested in information about these scholarships, please call us for more information.

NBS Camp Schedule 1993

June 28 - July 2

Nature Day Camp 1 9-2:30 M-F

July 5 - July 9

Nature Day Camp 2 9-2:30 M-F

Preschool A 9:30-11:30 T,Th

July 12 - July 16

Nature Day Camp 3 9-2:30 M-F

Preschool A 9:30-11:30 T,Th

Summer Challenge I 9-2:30 M,T
all day W, Th, pick-up 10 am F

July 19 - July 23

Nature Day Camp 4 9-2:30 M-F

Preschool B 9:30-11:30 T,Th

Summer Challenge II 9-2:30M, T,
all day W, Th, pick-up 10 am F

July 26 - July 30

Nature Day Camp 5 9-2:30 M-F

Preschool B 9:30-11:30 T,Th

Returning Camper Week 9-2:30
M, T, W, F and 3:30-9 Th

August 2 - August 6

Nature Day Camp 6 9-2:30 M-F

Preschool C 9:30-11:30 T,Th

Summer Challenge III 9:30-2:30M,
T, all day W, Th, pick-up 10 am F

August 9 - August 13

Nature Day Camp 7 9-2:30 M-F

Preschool C 9:30-11:30 T,Th

Returning Summer Challenge
9-2:30 M, T, all day W, Th, pick-
up 10 am F

August 16 - August 20

Nature Day Camp 8 9-2:30 M-F

Fledglings 9:30-11:30 M,W, F

Returning Camper Week 9-2:30
M, T, W, F and 3:30-9 Th

August 23 - August 27

Nature Day Camp 9 9-2:30 M-F

Preschoolers With Parents

Open to boys and girls ages 3-5
with a parent or guardian.

Designed as an introduction to the Sanctuary, this camp offers preschoolers and their parents a chance to participate in a camp setting through sensory exploration, nature stories and songs, and observations of the outside world. Three sessions will run for two weeks on Tuesday and Thursday mornings. One adult may be responsible for up to two children.

Session A: July 6, 8, 13, 15

Session B: July 20, 22, 27, 29

Session C: Aug. 3, 5, 10, 12

Time: 9:30 A.M. - 11:30 A.M.

Fees Per Session:

\$35 (\$25 each additional child)

NBS Members:

\$30 (\$20 each additional child)

Enrollment limited to one session

Fledgling Camp

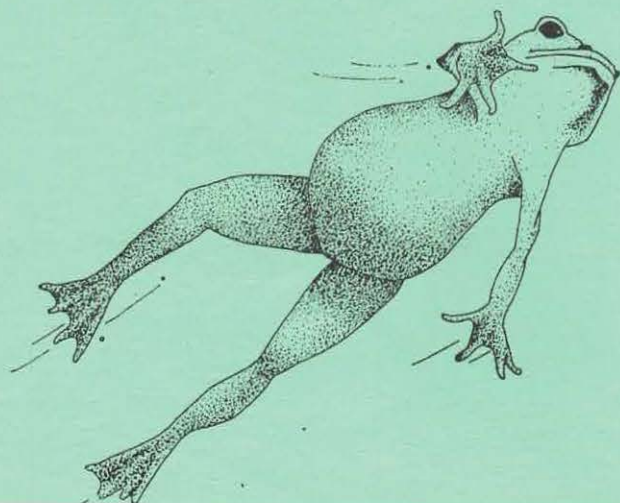
Open to those returning preschoolers (ages 4-5) who have already participated with parents in previous years and are still too young for day camp.

During this week, we'll offer a chance for campers to come "on their own". By coming three mornings during the week (Mon., Wed., & Fri., 9:30 am - 11:30 pm) they will get a taste of Nature Day Camp, independence, and natural learning fun! Children who have already participated in camp earlier in the summer are not eligible for Fledgling Camp unless room is available.

Fledgling Camp: Aug. 16, 18, & 20

Time: 9:30 A.M. - 11:30 P.M.

Fee Per Session: \$40 (\$35 NBS members)



Nature Day Camp

Open to boys and girls entering grades K - 4

Children will explore the diversity of the Sanctuary's lands learning about animals and plants and their habitats. Activities include natural craft making, group-spirited games, nature songs and stories, and investigation of ecological cycles of the field, forest, pond, ridge, marsh, and seashore. Children will be grouped by age, and led by our enthusiastic staff.

Session 1: June 28 - July 2

Session 2: July 5 - July 9

Session 3: July 12 - July 16

Session 4: July 19 - July 23

Session 5: July 26 - July 30*

Session 6: Aug. 2 - Aug. 6

Session 7: Aug. 9 - Aug. 13

Session 8: Aug. 16 - Aug. 20*

Session 9: Aug. 23 - Aug. 27

Time: 9 A.M. - 2:30 P.M.

Fee per session: \$95 (\$85 NBS members)

* It is not recommended for children in grades 3 and 4 to enroll in these two sessions, as they will be grouped with younger children if not participating in RCW described below.

Enrollment limited to one session

Returning Campers Weeks

Open to children entering 3rd or 4th grade who have been to Nature Day Camp for 2 or more years

During Sessions 5 and 8, we are offering a chance to enroll in our "Returning Campers Week". Familiar NDC themes will be combined with special advanced activities and a Thursday evening program (3:30-9 pm instead of day hours). Limited to 20 children per session. When registering, write "RCW" next to Session 5 or 8.

Session 5 RCW: July 26 - July 30

Session 8 RCW: Aug. 16 - Aug. 20

Time: 9 a.m. - 2:30 p.m. Mon., Tues., Wed., and Fri.;
3:30- 9 pm Thurs.

Fee per session: \$95 (\$85 NBS members)

Enrollment limited to one session

—Registration Form

(Please see back for additional campers. Should you need an additional registration form, please photocopy this form)

Office Use Only

Camp\$ _____ Ck # _____

Bal. Due \$ _____

Bal. Pd / \$ _____ # _____

Pre/FL/NDC/RCW _____

SC/RSC In Ses. _____

WL 1 _____ WL 2 _____ WL 3 _____

Parents' name _____

Street _____ Town _____ State _____ Zip _____

In case we have questions about registration, where can we reach you from 9 am to 9 pm?

Home phone # _____ Mom's work # _____ Dad's work # _____

Are you a current NBS family member through June 1993? yes _____ no _____ joining _____

For renewals and new memberships, please use a separate membership form and enclose a separate check.

1. Name of Camper: _____ Age: _____ Grade Entering: _____

Name of Camp: _____ Session # (1st choice) _____ (2nd choice) _____ (3rd choice) _____

She/He would like to be in the same session as _____

She/He would like to be in the same group as _____ (Both must be same age)

Did this camper attend an NBS camp in 1992? yes _____ no _____

Camp fee/Camper 1: _____ Deposit/fee enclosed: _____ Balance due by June 15: _____

Emergency Information for Camper 1

If parent or guardian named above is not available, Please notify:

Name: _____ Relationship to camper _____

Address: _____ Town _____ Phone: _____

Health History of Camper 1

Is the participant subject to any of the following: Yes _____ (check below) No _____

Fainting _____ Food Allergy (please list foods) _____

Hay Fever _____ Convulsions _____ Allergy to bee/wasp stings _____ Allergy to insect bites _____

Asthma _____ Epilepsy _____ Extreme Allergy to poison ivy _____

Allergy to Medications (please name) _____

Will she/he be taking any medications at camp? If yes, please list medications and instructions below

The summer camp programs at the Sanctuary involve physical, outdoor activities. Has the camper experienced any illness, injury, or operation which might interfere with her/his full participation? Yes _____ No _____

If so, please describe: _____

Camper's physician: _____ Phone: _____

Emergency Authorization: In the event that I cannot be reached in an emergency, I hereby give my permission to the physician selected by the camp director to hospitalize, secure proper treatment for, and to order injection, and/or anesthesia and/or surgery for my child as named above. I also give my permission for routine first aid care for my child by the camp staff.

Signature of Parent/Guardian: _____ date: _____

Swimming Permission:

I give my permission for my son/daughter to go swimming at the guarded section of Third Beach under the supervision of the NBS staff.

Camper's swimming ability: _____

Signature of Parent/Guardian: _____ date: _____

Should you need an additional registration form, please photocopy this form)

Camp fee/Camper 2: _____ Deposit/fee enclosed: _____ Balance due by June 15: _____

Health History of Camper 2

Please make checks payable to the Norman Bird Sanctuary.
Send to: NBS-Summer Camp 583 Third Beach Rd. Middletown, R.I. 02840

Summer Challenge

Open to all adventurous
explorers entering grades 5-7

Summer Challenge is an action packed week of activities that emphasize group cooperation, problem solving, exploration, nature study and low impact camping. Participants will learn about nature study, wild edibles, map-and-compass, canoeing, local wildlife, fire building, and camping under the stars. Fees include camp food, tenting materials, and day trip costs. There will be two nights of camping, Wednesday and Thursday evenings, and there will be no camp on the Friday following the overnights.

Session I: July 12 -16

Session II: July 19 - 23

Session III: August 2 - 6

Time: 9-2:30 Mon. & Tues., all day Wed. & Thurs.
Pick up on Friday at 9:30 am.

Fee per session: \$120 (\$110 NBS members)

Enrollment limited to one session

New!

Returning Summer Challenge (RSC)

Designed for those returning from previous Summer Challenges (grades 6 and 7) who would like two days of canoeing (including one day on the Wood River), two overnights, and some additional twists on the Summer Challenge day and nighttime themes.

Session RSC: August 9- 13

Time: 9-2:30 Mon. & Tues., all day and night Wed. & Thurs.. Pick up on Friday at 10 am.

RSC Session fee: \$130 (\$120 NBS members)

Enrollment limited to one session

Additional Information for both Summer Challenge and Returning Summer Challenge:

A list of suggested camping supplies and canoeing information will be sent at the time of confirmation.

Volunteer parent drivers will be needed for each Summer Challenge Wednesday canoe trip. If you can help, please let us know.

"Returning Summer Challengers" will be taking a bus to and from the river on Thursday.

For all camps... During your child's registered camp week(s), the NBS Teacher Naturalist may decide to bring his/her group to Third Beach as part of the day's activities. During these days, we allow campers to go swimming under the supervision of a lifeguard and the Sanctuary staff. You will be notified the day before the group is scheduled to go so that beach gear may be brought to camp that day.

REGISTRATION PROCEDURES

-PLEASE READ CAREFULLY-

Dear Parents,

The Norman Bird Sanctuary's Summer Camps are very popular with Sanctuary and we have had to make some important changes regarding registration over the past few years. With the guidelines set below, we are trying to make the camp registration process fair to all children as possible. Though camp size is limited, our goal is to accommodate as many people as we can without compromising on camp quality or the integrity of the preserve. Thanks for your support and cooperation.

1. Registrations may be mailed or dropped off at the NBS office.
2. All campers will be limited to one session. However, Nature Day campers (grades K-4) may register for two sessions after June 1, only if space allows. Priority will be given to those campers on the waiting list who are not yet enrolled in camp.
3. We will only accept registration forms from one family per envelope.
4. All registrations received up until April 13, 1993 will be mixed randomly and put into a secured box. (We cannot prioritize by postmark or by the number of years as a NBS member.)

Continued on the back

(Registration procedures continued from previous page)

5. After this date, we will continue to accept registrations by the order in which they are received and as spaces are available.
6. After the April 13th registration date, you will be notified of placement by May 7. You will receive a confirmation letter, and any other camp information. If you do not hear from us by then, please call us to check on your status. (An emergency form and swimming permission for each camper is included as part of the 1993 registration form.)
7. Non-member camp registrations will begin on **May 19, 1993**, if spaces are available.
8. The completed registration form and a \$20 non-refundable/non-transferable* deposit per camper per week is required. Deposits will be applied to the total camp fee. (* Deposits cannot be switched from camper to camper, or from camp to camp).
9. All camp balances are due by **Monday, June 15, 1993**. If we do not receive the camp balance by this date, your child's name will be dropped from the camp session and another camper will be chosen from our waiting list.
10. Family memberships are for immediate family members only. Cousins will not be accepted as immediate family members, unless legal guardianship has been granted. Separate memberships may be taken out.
11. Refunds of the camp balance, or pro-rated refunds of the balance will be made if we can fill the spot from the waiting list, or in the case of a medical emergency. All requests for refunds must be made in writing to the Sanctuary.

If you have any questions about the above procedures, please call NBS 846-2577.

Norman Bird Sanctuary
583 Third Beach Road
Middletown, R.I. 02840

Non-Profit Org.
U.S. Postage Paid
Newport, R.I.
02840
Permit No. 43

Or To Current Resident



NEWS FROM

The Barn Owl Shop

We've taken a fresh look at our store over the past few months with an effort to develop it as a true resource for bird lovers and naturalists, and to provide support material for educational programs we sponsor. We are also looking to provide things which are beautiful, thought provoking, special or fun! But most of all, we want our store to be a resource of products members and the community can feel positive about.

After a winter of investigating fresh ideas and products which support these goals of making the Sanctuary store more dynamic, the Spring will find us taking action.

During April, look for a clearance sale of products we will no longer carry. Come in for bargains! Meanwhile, we will be closing the actual retail shop space for an April refurbishment.

We anticipate putting our fresh face forward during Birds & Breakfast weekend and being in full swing by the June Annual Meeting.

Meeting this schedule will be a tall order for which we can certainly use interested volunteers..... especially several individuals interested in learning about the products and becoming our in store good will ambassadors!

IN STORE FOR THIS SUMMER

The Barn Owl Shop at the Norman Bird Sanctuary Barn will be the place for.....field guides and good summer reading.....walking sticks.....flower presses.....sun protection and insect repellent that you want to be in....family games that are a learning experienceand much more still under wraps!

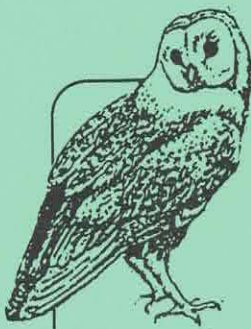
Spring Hours:

Tuesday through Sunday
9:00am - 5:00pm

Summer Hours (after Memorial Day):

Every Day
9:00am - 5:00pm

**NORMAN BIRD SANCTUARY MEMBERS RECEIVE A 10% DISCOUNT
ON ALL BARN OWL SHOP PURCHASES!**



Barn Owl Shop
at the Norman Bird Sanctuary Barn

**TAKE AN ADDITIONAL 10% OFF ANY CLEARANCE
MERCHANDISE WITH THIS COUPON!**

*offer valid during
April 1993 only*

The Barn Owl Shop
at the Norman Bird Sanctuary Barn
GRAND OPENING INVITATION

We want to encourage you to come in and take a look!

RECEIVE A ONE DAY TRAIL PASS, GOOD FOR UP TO 5 PEOPLE (VALUE TO \$10.),
WITH THIS COUPON AND ANY PURCHASE IN OUR SHOP. GIVE IT AS A GIFT TO A FRIEND!

*offer valid during
June 1993 only*

The Barn Owl Shop

*will be creating a list of products which we feel are well suited to the young naturalists
in your life (ages 5 - 12). If you would like to receive a copy, please send us this (or
drop it by and visit the Sanctuary!).*

NAME _____

ADDRESS _____

The Barn Owl Shop

I am interested in becoming a Barn Owl Shop volunteer!

NAME _____

ADDRESS _____

TEL # _____

