



The Norman Bird Flyer

VOLUME NO. 13 ISSUE 1

A QUARTERLY NEWSLETTER

Winter from the Water: A Surfer's Perspective

By Ken Dolbashian

Winter 1992

Awakened before dawn by habit, I peek outside the bedroom window to find, somewhat disappointingly, the ground still bare. The coastal storm that the weatherman had predicted last night must not have moved close enough to New England to bring the season's first snow. Yet I note that my neighbor's weathervane is pointing into the northeast - usually a harbinger of good surf.

While the rest of the house sleeps, I quietly gather together my board and wetsuit and slip outside to load up the car. It is relatively mild for the second week of December - 29 degrees - but even so the water will seem almost bath-like as the ocean's temperature hovers near 50 degrees. (During harsh winters the water may get as cold 32 degrees in late February.) The drive to the beach is quick, and as I pull into the lot I see two other "diehards" already suited up and heading into the ocean. The waves are well shaped but rather small, lending credence to the idea that the storm which developed last night stayed far out to sea.

Checking my watch - 6:30 - I don my wetsuit, wax up the board and head out into the surf. As I paddle out into the lineup, one of the other surfers catches my attention and points off to his left a distance of about 25 feet. Greeting the three of us this beautiful morning is the true local of the surfbreak, a small brownish-black seal. Not an uncommon sight in R.I. waters during the wintertime, the Harbor seal has been known to pop up within arms length of the unwary surfer. Once the shock passes, the thrill of sharing the ocean with one of its native inhabitants more than makes up for the initial fright.

Ordinarily, I would have found it odd to encounter this plump, yet surprisingly agile creature so early in the winter season. In fact, in all of my fifteen years of winter surfing, I had never seen a seal in December. However, recalling a recent news article, read only a week or so before this "go out", I was alerted to the potential for such an early sighting. The seal population in the North Atlantic has been growing and as such the pressure on the food supply (particularly herring and squid) has forced many of the younger seals to venture southward in greater numbers.

This stroke of good fortune in seeing the seal almost immediately upon entering the water, as you might imagine, served to get my blood and adrenaline flowing. Yet at the same time, it directed me into a more pensive state of mind, contemplating other such opportunities to observe nature from the vantage point of a surfboard. The mere fact that storms that bring good surf are more prevalent during the winter months increases the surfer's opportunities in this regard. One need not be a marine biologist, a graduate student in meteorology, nor even a hard core bird-watcher to appreciate the many gifts the marine environment may present to those aware enough. (Continued on p. 2)

INSIDE

DIRECTOR'S
NOTES.....p. 2

SPECIAL
EVENTSp. 3

WINTER CHILDREN'S
PROGRAMSp. 4

WINTER PUBLIC
PROGRAMSp. 6

ANIMAL
PAUSEp. 8

VOLUNTEERS AND
DONATIONS.....p. 9

WINTER
CALENDARp. 10

WINTER BIRD SEED
SALEp. 11

MEMBERSHIP
INFORMATION ..p. 12



(Continued from p. 1)

For instance, many surfers, myself included, are unaware of the precise reasons accounting for the greater number of surf-producing storms during the cold months of the year. Though most realize that the outward tilt of the earth on its axis and its relationship to the sun plays some role in winter's colder temperatures, it is often difficult to make the connection, at least scientifically, between this reduction in temperature and the formation of winter storms off the mid-Atlantic coast.

Yet there are tidbits of information that serve us well. For instance, most surfers in R.I. know that a strong southwest wind, early in the morning, means that a storm system and cold front is approaching from the west, while a northeast or east wind, such as the conditions on this particular day, indicates that a coastal storm has taken shape to the south of our area. Obviously the need to understand the chemistry of storm formation is not as important as being able to read the little clues that a storm invariably presents.

While waiting for a set of waves to approach I turn back toward the shoreline and notice a large "V" of geese flying east over the headland. My thoughts return in time to some interesting occurrences with another group of winter visitors to our shores; migratory sea birds. I think back on a number of occasions during past winters when I've shared the ocean with a loon. Any surfer who has witnessed this large, lone bird submerge itself to search for fish and then emerge after what seems like an eternity, 100 yards down the beach, realizes that this bird-watching perspective is quite unlike any that a landlubber would be privy to.

Another seabird whose path I have crossed on more than one occasion is the Bufflehead duck. Quite a bit smaller than the

loon, and distinctive by its white head patch (and buffalo shaped head as suggestive of its name), the Bufflehead tends to stay closer to the shoreline in what surfers refer to as the "shorebreak." Many times I've passed through rafts of these ducks on the paddle out and ended up in their laps at the end of a ride.

I find it enjoyable to be able to observe these sea creatures in their natural habitat as if nature has bestowed an honor on those who make the effort to join them in the water. When I'm surfing in the winter and a loon pops up nearby I'm not usually contemplating its biology. I don't usually focus on the evolution of the loon's seaworthiness. Instead, I tend to regard such occasions as a sort of reward for facing the elements. The exhilaration that one feels from diving under a wave in the dead of winter, from looking a seal in the eye from twenty feet, admiring, in fact envying its adaptation to the marine environment, from looking at a bright pink sky in the west just before the sun sets, is seldom duplicated.

After an hour and a half our friend the harbor seal has moved on to a different locale and I think the time has come for me to do likewise. Having ridden my share of waves on this crisp winter morning I paddle hard to catch a final roller and, as I get to my feet, I look toward the shorebreak; Watch out Buffleheads - coming through!



Director's Notes

First things first...

I would like to wish you, our members and friends, a Happy New Year and to thank you for your support during this past one. Given the economy, your continued support is all the more appreciated and needed. I hope that you will continue to support our programs through the year ahead.

Better late than never...

By the time this newsletter has been delivered, the Sanctuary should have received a check for \$400,000 from DEM toward the \$1.15 million purchase of land and conservation easements at Gray Craig. We were informed that the check would be written on December 20th. Given the financial problems of the state government, and it having backed out on other open space projects, we are extremely lucky to still be in the game. Receipt of the DEM funds will allow us to set a closing date for this purchase.

The relative quiet of the winter season will allow us to continue cleaning up the hurricane damage on the trails, to begin construction on a new trail to the Gray Craig property, to resume work on the trailside museum, and to plan for an active year of programs ahead.

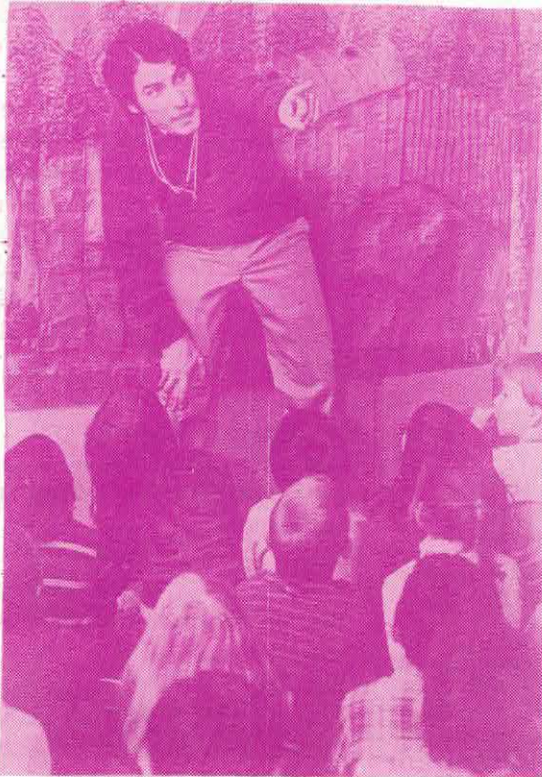
Best wishes for the new year,

Lawrence Taft
Lawrence Taft

Community Garden Meeting Sunday, March 29 1 pm

The Sanctuary has approximately 35 garden plots in both 200 and 400 square-foot sizes. These plots are available to members who wish to have an organic vegetable garden on the refuge. Any current member who is interested in having a garden plot for the 1992 season should attend this meeting. Returning gardeners must also attend in order to retain the plots used last year. During the meeting, the Sanctuary's garden policy will be reviewed and plots will be assigned. A short presentation on organic gardening and composting will follow.

The Norman Bird Sanctuary and the Audubon Society of Rhode Island
are pleased to co-sponsor



Keepers of the Earth: Completing the Circles of Life

with Michael Caduto

Sunday, March 8 1-2 pm
at the Norman Bird Sanctuary

Book sales and signing to take place
immediately after the performance

Families and Teachers are invited to join us today, as master storyteller and author, Michael Caduto performs Native American myths and legends. The performance will include songs, chants, native instruments, a dance and stories that are carefully chosen from among the native North American cultures to share lessons for wise environmental stewardship. Participants will be introduced to, and actively involved in the great circles of life—the traditional native American basis for a balanced, sustainable, existence with the earth.

"A magical hour" — Northfield News, Vermont

"Your performance was a Conservation Summit favorite"— National
Wildlife Federation

"Michael lured the audience into a raptured silence" — Librarian,
Middlebury, Vermont

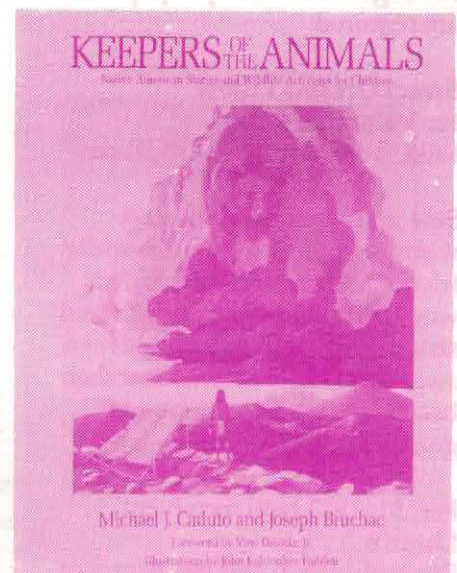
After his performance, Michael will be selling and autographing his nationally acclaimed best-seller *Keepers of the Earth* and its popular sequel, *Keepers of the Animals*. Half the proceeds from the sales of these books will be donated to the Sanctuary and Audubon. You do not have to participate in the performance in order to take part in the book sale or signing.

Fee: \$8 (\$6 NBS and RI Audubon members) adults
\$6 (\$4 NBS and RI Audubon members) children

Space will be limited

Pre-registration and pre-payment are required.

Add \$1 per person for payment on day of performance



Children's Programs

Preschoolers with Parents Nature Hour

Wednesday mornings and
afternoons 10-11 am or 1-2 pm

We are delighted to offer two times for our popular nature hour for children, ages 3-5, accompanied by a parent. Taught by enthusiastic "Parent Volunteer Naturalists," Mary Beth Hunte and Marilyn Lyell, these classes will serve to introduce children to nature, gently. Hands-on props and live animals will help to reinforce simple ecological concepts. Parents can be responsible for a maximum of two children and should expect to participate. Dress for the weather.

Winter Session:

1/22: Who has feathers?
1/29: Tracks to Follow
2/5: Snug as a Bug
2/12: Love a Skunk

Early Spring Session:

3/18: Weather, Wind, and Warmer Days
3/25: Reptiles Around Us
4/1: Funny Finds for Fools' Day
4/8: Eggs

Fee per session: \$15 (\$12 NBS members)
Limit: 10 child/parent pairs
Pre-registration and pre-payment are required

Sweet Dreams Pillow for Valentine's Day

Wed. February 12 3:30-5:30 pm

Sew up this simple but heart-warming pillow for your favorite friend. Stuff it with soft carded wool (from the Sanctuary's "baaad" sheep) and herbs that will invoke sweet dreams to all who rest their heads upon it. For children in grades 2-5.

Fee: \$14 (\$12 NBS members)
Limit: 8
Pre-registration and pre-payment are required.

Nature Club

Saturday mornings 9:30-12:30

Children in grades K-4 are invited to join us for our winter and early spring nature club. During these sessions, we will explore nature during her cooler seasons through hiking, games, crafts, stories and songs. A mid-morning energy snack will be served. Dress warmly, in layers.

Winter Session:

1/25: Wild Winter Weather
2/1: Tracking Wildlife
2/8: Surviving the Winter
2/15: Pine Cones and Evergreens

Early Spring Session:

3/21: Watching Birds
3/28: Discovering Spring
4/4: Exploring the Valleys
4/11: Amphibians Around Us

Fee: \$40 (\$36 NBS members)

Limit: 20

Pre-registration and pre-payment are required.

For registration, see "Program
Registration" on page 7



Greenhouse Chemistry

Saturday, Feb. 15 1-4 pm

Make a terrarium greenhouse to bring home! We will use our mini greenhouses to discuss the greenhouse effect on our precious Earth. Children will learn the basics of atmospheric chemistry in a friendly way that will include their active participation. This class will be led by Bobbi Lamont, a local member of the American Chemical Society, and is open to children in grades 2-6. Participants are asked to bring an empty, clear plastic soda bottle. All other materials will be provided.

Fee: \$10 (\$8 NBS members)

Limit: 10

Pre-registration and pre-payment are required

Winter Vacation Week- for public schools

February 18 - 21

Tuesday-Friday 9:30 am-12:30 pm
(Spring Vacation Week registration will be in our Spring Flyer April 14-17)

Early Spring Vacation Week- for private schools

March 17-20

Tuesday- Friday 9:30 am-12:30 pm

During both vacation weeks, we will offer children a fun-filled week of hiking, crafts, stories, and songs. Every day there will be a new natural theme to explore! A healthy mid-morning snack will be served. Children are asked to dress for the weather. Come and spend your vacation with nature! Vacation weeks are for children in grades K-4.

Fee per vacation week: \$36 (\$32 NBS members)

Limit: 20 children

Pre-registration and pre-payment are required.



Easter Basket -Making for Kids Thursday, April 16 1-4 pm (during vacation week)

Children in 1st grade or above can make this easy square-bottomed basket with bright Spring colors. Add a handle for carrying all those goodies! Sharon Culberson is excited to teach this first children's basket class to be offered at NBS! Bring scissors.

Fee: \$14 (\$12 NBS members)
Limit: 6
Pre-registration and pre-payment are required.

Spring Egg Hunt Saturday, April 18 1 pm

Celebrate the return of Spring and warmer weather! Venture through the Sanctuary's buildings and upper trails looking for chocolate covered eggs and other goodies, as part of the search for signs of Spring. Find the extra special "earth eggs" that contain earth loving surprises. Children ages 3-10 may participate in this members-only Sanctuary event. Bring your own collecting basket.

Fee: \$5 one child/parent pair or \$8 family
Limit: 30 children
Pre-registration and pre-payment are required.

For registration, see "Program Registration" on page 7

Special Programs for children

Island Arts, founded by Natasha Harrison and Lisa Utman, is a newly formed organization aimed at providing low cost, innovative art experiences for children and adults. Their eventual goals include providing studio space, art workshops, non-commercial gallery space and a coffeehouse/arts information center. Until they find a permanent space, they will be offering their programs at various locations in the Newport area. We are happy to have them offer their first series of workshops here at NBS in the coming months. For additional information about Island Arts, call Natasha at 847-4240 or Lisa at 848-0307.

Island Arts Programs for Kids:

Make Your Mark at the Bird Sanctuary! Sundays Jan. 19, 26 and Feb. 2 1-4 pm

Children in grades 2 and above are invited to explore the plant and animal life around the Sanctuary. They will then interpret their discoveries with paint, using the floor and windows of the barn as their canvas. The final results will be open for display. All materials will be provided.

Fee: \$32 (\$30 NBS members)
Limit: 12
Pre-registration is required

Open Your Eyes: Microscopic Nature to Macroscopic Art Sundays Feb. 9, 16, and 23 1-4 pm

During this workshop, children in grades 2 and above, can explore nature to seek out details that ordinarily go unnoticed. Back indoors, they will transfer their findings into large scale monoprints. Children will have the opportunity to learn about Mabel Norman, NBS founder and artist as well as to see her studio, adjacent to NBS, where she once painted. The children's work will be displayed for viewing afterwards. All materials will be provided.

Fee: \$32 (\$30 NBS members)
Limit: 12
Pre-registration is required

St. Patrick's Day Parade- March with Art! Sundays, March 1, 8*, 15 1-4 pm

Children will create imaginative animal costumes using paper mache and various found and recycled objects. They will march with their creations in Newport's St. Patrick's Day Parade, supervised by the Island Arts staff. Children in grades 2 and above are invited to this program. *For those who might want to hear our storyteller on this day, we will make special arrangements for you.

Fee: \$32 (\$30 NBS members)
Limit: 12
Pre-registration is required

Special rate for all three workshops: \$95 (\$85 NBS members)

Public Programs

Owl Prowl at NBS

Thursday, January 23 7-8:30

If you are fascinated with this magical bird, join us as we learn about our local owls during their courting season. We'll spend a few minutes indoors learning about their unique adaptations before venturing out in the woods to hear them. Dress warmly.

Fee: \$6 (\$5 NBS members)

Limit: 10 adults

Pre-registration and pre-payment are required.

Winter Birding on Aquidneck Island's Coast

Wednesday eve. Jan. 22 7:30 pm

Sunday morn. Jan. 26 7:30 am

Whether you've been a bird watcher for years, or just a beginner, this 2 part minicourse on birding may be right for you. Sanctuary Director, Lawrence Taft will teach about the identification and behaviors of many of the sea ducks, shore birds, and birds of prey that visit the island's coast each winter. The evening session will be a presentation using slides and stuffed specimens. During the field trip, explore the coastline and ponds in search of birds. Please bring binoculars and a field guide.

Fee: \$12 (\$10 NBS members)

Limit: 15

Pre-registration and pre-payment required.

Garlic Basket -Making Class

Saturday, January 25 1-4 pm

Using round reed and "twining" weaving, participants will create this 6" basket for storing this important culinary addition. If you are a beginner weaver, this basket class is a perfect start to a wonderful hobby. Sharon Culberson, from Hilltop Gardens will be the instructor. Please bring heavy scissors. Extra materials will be available for purchase afterwards.

Fee: \$14 (\$12 NBS members)

Limit: 10

Pre-registration and pre-payment are required

Protecting our Shorebirds: Piping Plover in RI

Thursday, Feb. 13 7-8 pm

Griff Venator from The Nature Conservancy will give an evening lecture and media presentation on the endangered Piping Plover that summers on Goosewing Beach in Little Compton. Goosewing is one of the largest undisturbed barrier beaches in Southeastern New England and has the largest number of pipers of any single site in R.I. Griff will describe last year's nesting successes and explain the coming season's volunteer monitoring program. Volunteers will be used during the Spring and Summer to patrol and monitor nesting sites. This is an opportunity to learn how you can help endangered species in their fight to survive.

Fee: \$2 (Free to NBS members)

Pre-registration and pre-payment are required.

Heart Basket -Making Class

Thurs. eves Jan.30 & Feb. 6

6:30-8:30 pm

For the intermediate basket weaver, Sharon will lead this two part class through the making of a square-bottomed, heart-shaped basket for you or your favorite friend. Warm valentine colors of pinks, reds and purples will be available, as well as a handle for your creation, if one is desired. Bring heavy scissors. Extra materials will be available for purchase afterwards.

Fee: \$18 (\$15 NBS members)

Limit: 10

Pre-registration and pre-payment are required.

Natural Skin Care

Saturday, Feb. 29 1-3 pm

Leap into Spring on this "leap day" by pampering yourself through the last days of winter. Sharon, from Hilltop Gardens will discuss these alternative treatments and then help you make three healthy potions to take home with you - an oatmeal bath for relaxation, a fragrant herbal essence for freshening, and an herbal oil for massage. Come to soothe yourself, naturally!

Fee: \$14 (\$12 NBS members)

Limit: 15

Pre-registration and pre-payment are required

Twig Swags for Springtime

Saturday, March 21 1-3 pm

Help put the final decorative touches onto this swag made from native twigs and budded branches to hang above your door or on your wall. Seed pods, berries, cones, and dried flowers will be among the natural items available from which to choose. Bring heavy scissors.

Fee: \$24 (\$20 NBS members)

Limit: 8

Pre-registration and pre-payment are required.





A Wildlife Refuge

NORMAN BIRD SANCTUARY

1992 Environmental Education Programs

-Winter through Spring-

The Norman Bird Sanctuary has the following natural history programs available for students, in grades Pre- 7, teachers, youth group leaders, and community groups. All programs require pre-registration. Space is limited. Please call early ! 846-2577

Natural History Walks

(Winter-Spring)

On the trail, a special kind of learning takes place not easily forgotten by students or teachers. Guided by Sanctuary Naturalists, most walks travel through several of the seven diverse habitats that are found at NBS. Sensory awareness, observation, group cooperation, problem solving and action games all help to round out the pleasure of hiking in the protected refuge.

Fee: \$2 per student (1 1/2- 2 hour walks), \$3.00 per student (3 hour walk)

Time: 1 1/2 - 3 hours

Note: One chaperone per 10 children. There is no charge for chaperones.

Topics:

Four Seasons Walk (Pre- 1st grade)

Exploring Habitats (2nd-8th grade)

Wildlife Adaptations (4th-8th grade)

Self Guided Tours: We encourage any teacher who would like to guide his/her own class. Special arrangements will be made for you, including an appointment with one of our educational staff, and a self-guiding packet. The fee for a self-guided walk is \$1 per student. Please call us for more information.

In-School Programs

(December - April)

Bring the unique resources of the Sanctuary to your classroom during the colder months. Designed to enrich your science curriculum, these programs can serve as an exciting introduction or culmination to a study unit, or as lessons themselves. A Sanctuary Naturalist will visit with live animals, museum specimens, and other learning aids for a program to spark the child's imagination while teaching about the natural sciences.

Fee: \$40 per first class/school \$30 each class thereafter (3 classes/school/day)*

Time: 45 minutes per program

Note: Maximum group size is 50 students, or two classes

Travel fee for off island visits: \$10

Topics:

Animal Kingdom (Pre-4th grade)

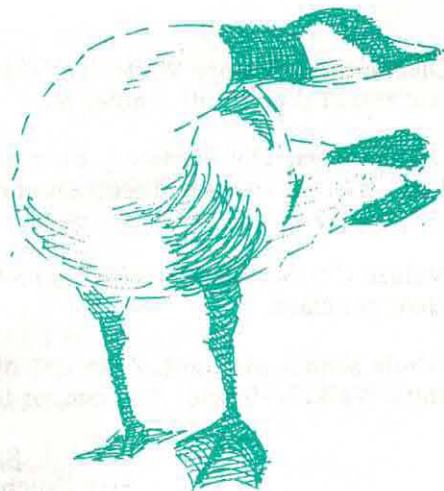
Beaks, Bills, and Feathers (1st-5th grades)

Raptors: The Predatory Birds (4th-8th grades)

Winter Adaptations (3 parts) (K-8th grades)*

*Winter Adaptations consists of 3, 1 hour programs.

The fee is \$85



More programs on back...

Norman Bird Sanctuary
583 Third Beach Road
Middletown, R.I. 02840
(401) 846-2577

To interested educator at same address or

Teacher/Parent Workshops

These workshops will help both educators and parents learn about the Sanctuary's approach when working with children in an outdoor setting. Using nature to set the stage, each workshop will combine use of outdoor techniques and resources with indoor projects and games. Hand-outs will be included. Space will be limited.

Fee: \$15 per person/or \$75 for 6-10 adults
Time: 3-5 pm

Topics:

Geology for the Non-Geologist
The World of Birds
Learning about Nature through Songs and Games
Conceptual Learning through Natural Crafts

School Yard Walks

(Oct.-June)

Perhaps your class cannot afford to pay for a trip to the Sanctuary, but you have a desire to have your students learn in an outdoor setting. School yard walks are a perfect way to learn about the outdoors, your school, and ways to help wildlife living around your school. Even asphalt has some life between its cracks! Let NBS help you discover your school yard.

Fee: \$40 per first class/school \$30 each class thereafter (3 classes/school/day)
Time: 30 minutes - 2 hours

Early Bird Special Programs

Discounted fees.. but staffing and scheduling are limited
(Call early !)

1. One Natural History Walk (Fall/Spring) and one In-School visit (Winter) per class....Take \$10 off regular fees
2. One Raptors: The Predatory Birds Inschool program (Fall-Winter) with live hawk, handouts, and indoor classroom games, dissection of owl pellets, and a guided Owl Prowl Night Hike at the Sanctuary (Winter) ...\$120 per class
3. Nature Crafts Workshop for students(Winter) instructions and materials provided ... \$5 per student per class.
4. Whole school discount...Take 10% off total program cost for whole school scheduling of a Natural History Walk, In-School Program, or School Yard Walk.



Sanctuary Teaching Staff:

Lisa Pritchard - NBS Education Coordinator
Hap Morgan - NBS Naturalist



Woodcock Walk

Sat. March 21 5:30 pm sharp!

We're quite sad to report that our resident woodcocks were not their usual amorous selves last year, as it was the first in many years that the courtship fields were quiet. (We hear that their populations are in decline due to the continuous loss of nesting habitat-open fields with some brushy cover). So...please come this year with your fingers crossed and lots of hope as we take our annual walk to find these unusual birds. We will celebrate their return with a toast to Spring and a commitment toward helping all the earth's creatures in trouble.

Fee: \$4 (\$3 NBS members)

Limit: 15

Pre-registration and pre-payment are required

Easter Basket -Making

Saturday, March 28 1-4 pm

Just in time for the egg hunt, make this bright and easy 8" basket for collecting! Careful instruction and pastel colors of Spring will be provided by Sharon Culberson. Bring heavy scissors. Extra materials will be available for purchase afterwards.

Fee: \$19 (\$16 NBS members)

Limit: 10

Pre-registration and pre-payment are required.

The Sunday morning birdwalks will be discontinued during the months of January and February. Please join us again for the Spring season beginning March 1 at 8am.

For Adults and Kids

Winter Wildlife Discoveries

Saturday, Feb. 8 2-4 pm

Along with the cold and often snowy months of winter comes the time of discovery and surprise along the Sanctuary's trails. Tracks, scat and other signs left by fox, rabbit, squirrels, birds, and even insects may give us the opportunity to unlock some of nature's winter secrets. Participants are asked to dress warmly for going out on a quest through the forest, fields, and ridges in search of clues that may tell us how creatures survive the cold months.

Fee: \$6 (\$4 NBS members) adults

\$5 (\$3 NBS members) children in grades K and older, accompanied by an adult

Limit: 15

Pre-registration and pre-payment are required.

Program Registration

Program registration with accompanied payment, either by mail or in person will be given priority over phone reservations. Phone reservations will be accepted for programs, but payment must be made within 24 hours of program before registration can take place. Please use the registration form below and return to NBS. By using this form, you may deduct \$2 from your total. Thank you.

PROGRAM(S): _____

NAME: _____

ADDRESS: _____

PHONE: (h) _____ (w) _____

AGE (If child) _____ GRADE _____ (If child)

Are you a current NBS member? _____ Program Fee(s): \$ _____

PROGRAM(S): _____

NAME: _____

ADDRESS: _____

PHONE: (h) _____ (w) _____

AGE (If child) _____ GRADE _____ (If child)

Are you a current NBS member? _____ Program Fee(s): \$ _____

PROGRAM(S): _____

NAME: _____

ADDRESS: _____

PHONE: (h) _____ (w) _____

AGE (If child) _____ GRADE _____ (If child)

Are you a current NBS member? _____ Program Fee(s): \$ _____

***IF YOU NEED ADDITIONAL SPACE,
PLEASE USE A SEPARATE PIECE OF PAPER***

TOTAL PROGRAM FEES: _____

DEDUCT \$2 - _____

TOTAL FEES ENCLOSED: _____

Please send to: Program Registration, NBS, 583 Third Beach Road
Middletown, R.I. 02840

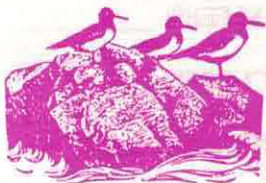
IEEP Interns at the Sanctuary

by Susanna Craib-Cox
and Tucker Thompson

This fall, we were the first students from St. George's School to participate in the International Environmental Exchange Program at the Norman Bird Sanctuary. The IEEP program was developed by the National Audubon Society in conjunction with St. George's, the Sanctuary, and the Asa Wright Nature Centre in Trinidad. In the program, we learned about birds and bird migration, taught fourth graders at three local elementary schools, collected data on the computer, and worked on the trails at the Sanctuary.

During the first few weeks, we learned about bird anatomy through the Hypercard program on the Macintosh and taxidermy lessons. We familiarized ourselves with the various local species of birds that reside in the Sanctuary and those that migrate south for the winter. When hiking along the trails at the Sanctuary, we were able to discover the different birds and their habitats. Once we understood the basics of birds and their identification, we worked closely with Lisa Pritchard to come up with a lesson on migration for fourth graders at three elementary schools.

The migration lesson was taught to fourth graders at Underwood, Coggeshall, and Oliphant Schools. We taught the students about the adaptations that make birds special; their feathers, hollow bones, how they fly, why they migrate, and which birds migrate south. Later, students participated in a migration game. (Continued on p. 9)



Animal Pause

The winter has brought us the annual return of "goose music" as the Canada Geese, some 950 of them, commute each day between the reservoirs and the corn fields. Though the species has become overpopulated in many New England states, due to warmer temperatures and people's feedings, they are still a wonderful part of the seasonal cycle and continue to bring music to our ears.

The Sanctuary's sheep, "Tansy" and "Yarrow" seem to be enjoying their new pen, built this Fall as a permanent home. As they browse their way through the bittersweet vines and multiflora roses, the old stone wall, a relic of sheep farming past, has become visible on the western side. The question is, will the pen hold in these two "baaad" woolly beasts? We hope so!

Our resident display hawks and owl were treated to their annual grooming, courtesy of New England Wildlife Clinic from Hingham, MA. Each bird had their talons clipped and their beaks "drummed" of their overgrowth. Old "Hooter" resisted all the way, but was soothed by a few mice in his system afterward.

Little Bea, our bantam chicken, is spending her days between classroom visits and her day pen in the children's garden. Worms are scarce these days so she would appreciate anyone who can visit her for company and bring her wholesome snacks too.

A flock of Cedar Waxwings can be heard almost daily by those who listen for their high pitched calls as they make their way through the Sanctuary's berry trees and shrubs. If you get close enough, you may even see a flock "sharing" their berries as they line up on the branches to pass the single berries up and down.

Red Fox "scat" is plentiful this time of year as it is left visibly on the many rocks and in the middle

of trails and the boardwalks. Foxes are marking their hunting territories with these droppings, as the weather grows colder and hunting grounds become more important. Did you know that a male Red Fox will walk in a straight line until he finds an unoccupied territory?



Look for the visiting Snowy Owls at Sachuest Point. The point resembles the owls' tundra habitat. You might mistake a snowy for a white plastic bag, as they perch on the ground and can be readily seen during daylight hours.

A red phased Eastern Screech Owl was brought to us by Portsmouth Public Works workers when they found him on the side of the road. After an examination by Dr. Wakem from Bristol, the owl was transferred to Tufts Veterinary Clinic because of a permanent eye injury, perhaps making the bird unreleasable.

The first \$75 from the Henny Penny Fund will go toward the purchase of interpretive signs for our animals. We think Henny would have approved of this purchase. It's been a year since her death and we still miss her!

Rabies Warning

Though there has not been a reported case of rabies yet in R.I. this year, the state's Department of Environmental Management is taking precautions and alerting people who are in contact with animals. Because some of our local mammalian wildlife (fox, bats, skunks and raccoons) are very susceptible to the virus, please be cautious by keeping your distance. Do not feed these animals or encourage any friendly behavior. Use tightly sealed cans for trash and seal up any entry holes in your foundations, attics or porches. As a further preventative, domestic pets, both cats and dogs should be vaccinated. For more information, contact DEM, Robert Potter League, or NBS.

Volunteers and Donations

Thanks to all of you who helped us during the past Fall season!

Animal Caretakers: Emily Leslie, Evan Moore, Hera Tar, Michelle Vivieros, Landon Merrill, Brian and Matt Oakley, Michael Kosinski, Laura Mazuroski, Forster Peabody, and Peter Staley.

Animal Donations: Star Market, Clements' Market, New England Wildlife Clinic, Dr. Wakem and Sakonnet Veterinary Hospital

Fall Educational Program Volunteers/Donations: Sharon Culberson, Jocelyn Sherman, Marilyn Lyell, Mary Beth Hunte, Debra Prentis, Angela Larson, Bobbi Lamont, Michele Studer, and an extra special thanks to Joan Thomas.

Harvest Fair Volunteers- General Chairpersons: Anne Damon and Phil Rondina
Committee Chairs: Polly Bradley, Debby DeAscentis, Sara Meade, Penny Anson, Fran Holmes, Sanne Hodges, Francette Roeder, Rachel Cooney, Candy Powell, Jane and David Steele, Kathy Finn, Sharon Pelletier, Bonnie Williams, Phil Rondina II, Betsy deLeiris, Ray Rogers, Cally Gottlieb, Ginny Purviance, Jocelyn Sherman, Roger Gilman, Pam Cooper, Leslie Murphy, Fran Babcock, C.G. King, Peggy Hughes, Al Marcantonio. And to all who gave many hours as volunteers/donors during the fair- WE APPRECIATED EVERY MINUTE OF YOUR TIME !

Night Hike Volunteers: Ron, Mary Alice and Jamie Lurgio, Linda J. Vars, Sara DiBari, Martin and Laurie Bradburn, Justin Brierley, Marc Berry, Seth Engelhard, Cindy and Brian Killavey, Nicole LaChance, Erin Davis, Linda, Ron, Jason and Meghan Franklin, Jay Bessinger, Matt Barabe, Linsley and Ann Boyer, Jeanette Knapp, Jessica Moreland, John Alonso, Michele Vivieros, Matthew and Brian Oakley, Landon Merrill, Ken Dolbashian, and Natasha Harrison.

Office Sitters and Mailing Volunteers: Art Nelson, Yong Marhoffer, Bobbi and Ben Lamont and Fran Holmes.

Spaghetti Dinner Crew: Tom and Jan Gunzelman, Julie Toland, and Jenny Morgan.

And...we are grateful to have had the volunteer expertise from Karla Boreiri and the careful editing by Robin Longshaw and Helene Pritchard.

New! Children's Garden Committee

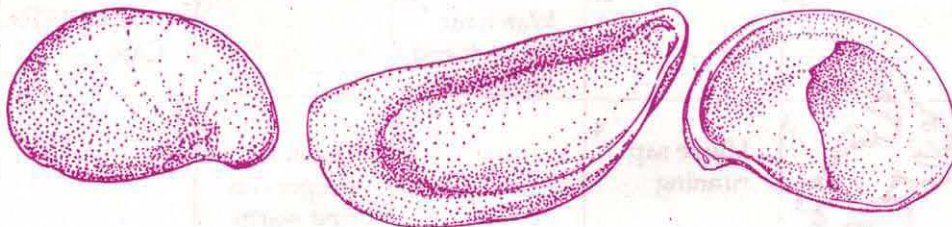
The Sanctuary would like to invite all interested gardeners (both children and adults) to attend our first Children's Garden Committee meeting on Tuesday, February 18 from 3:30-4:30 pm. We would very much like to have this committee make a true commitment toward helping us turn our front garden into a fun and special growing space for the 1992 season. At this meeting, we will decide how to best plan, plant, oversee, and harvest. Come with ideas and a willingness to help us pull it off! Please call us to let us know that you'll be coming.

Volunteer Wish List:

- * Litter Clean Up Volunteers for Sunday, March 22 at 1 pm.
- * Bring gloves and wear heavy shoes. Garbage bags will be provided. Call to let us know you'll help.

Donation Wish List:

- * SE 30 Macintosh Computer
- * Stale cereal and bread



(IEPP intern article continued from p. 8)

The game consisted of the students, as birds, migrating from one end of the room to the other while facing different obstacles such as predators, inclement weather, and polluted habitats along the way. The students were able to get an idea of how few birds actually survive the migration process. In the south, we treated the survivors to candy corn (the fallen members of the flock got some as well!)

To complete the semester project, the 4th grade students from Newport and Middletown wrote various stories and questions, enclosed autumn leaves, and drew pictures to be added to an exchange box to be sent to students in elementary schools in Trinidad. Each classroom in Trinidad will receive the items collected and will then send a similar collection back to the local schools.

In Trinidad, the most southerly isle in the Caribbean, there is a program that parallels ours in St. Augustine's Girls School, St. Joseph's Convent, and Holy Faith Convent Couva. The students there started later in the school year than we did. It's been more difficult than we imagined to get information exchanged at the same rate. However, it is hoped that the Trinidadians will have the same success as we have had.

On the whole, the lessons with the elementary students were a great success. The program gave us many opportunities to help in the Sanctuary, as well as a greater understanding of birds. We enjoyed teaching the students about birds, and the migration process. We encapsulated our project on a bulletin board in the Sanctuary barn. We hope that you can come and see it yourself.



Winter Happenings at NBS

January Sunday 19	Monday 20	Tuesday 21	Wed. 22	Thursday 23	Friday 24	Saturday 25
*Leave Your Mark Art Full Moon (Hunger Moon)			*Preschool Nature Hour *Winter Birding	*Owl Prowl-adults		*Nature Club *Garlic Basket STB conference BeachClean-up
26	27	28	29	30	31	February 1
*Winter Birding *Leave Your Mark Art	Listen for owls		*Preschool Nature Hour	*Heart Basket	Winter thaw: look for insects out and about	*Nature Club *NOFA Conference *Seed Pick-up
2	3	4	5	6	7	8
*Leave Your Mark Art *Seed Pick-up			*Preschool Nature Hour	*Heart Basket		*Nature Club *Winter Walk
9	10	11	12	13	14	15
*Macro Art	Foxes begin to mate		*Preschool Nature Hour *Valentine Pillows	*Piping Plover program	Valentine's Day	*Nature Club *Greenhouse Chemistry
16	17	18	19	20	21	22
*Macro Art 		*Winter Vacation Week Starts *Children's Garden Mtg.	Full Moon (Snow Moon)		*Winter Vacation Week Ends Spring begins	
23	24	25	26	27	28	29
*Macro Art				Watch for Red-winged Blackbirds		*Natural Skin Care
March 1	2	3	4	5	6	7
*Spring Bird Walks begin *Parade Art	Skunks are mating		Maple sap running		Listen for peepers on first warm night	
8	9	10	11	12	13	14
*Bird Walk *Keepers of the Earth Stories *Parade Art		Geese and ducks begin to migrate north		Pussy willows are out		
15	16	17	18	19	20	21
*Bird Walk *Parade Art		*Vacation Week begins	*Preschool Nature Hour Full Moon		*Vacation Week Ends	*Nature Club *Twig Swags *Woodcock Walk
22	23	24	25	26	27	28
*Bird Walk *Volunteer Litter Patrol *Garden Mtg.			*Preschool Nature Hour Egg Hunt			*Nature Club *Easter Basket
29	In April:	Vacation Week		Baskets for kids	Earth Day celebrations	Next newsletter out soon !

NORMAN BIRD SANCTUARY Winter Bird Seed Sale

Saturday and Sunday, February 8 & 9 1992 10:00 a.m. to 3:00 p.m.

Throughout the weekend, the NBS store will have bird feeders and accessories for sale.

Stock up now for the rest of the winter season. Feed the birds and help support programs at the Sanctuary at the same time. Order your bird seed now and receive a 10% discount on all new feeders in stock when purchased during this weekend only. (This is in addition to the 10 % membership discount!)

To order:

Fill out the order form below and mail it with payment to the Norman Bird Sanctuary, 583 Third Beach Road, Middletown, RI 02840. Orders for seed must be received by Friday, January 24, 1992. Make checks payable to the Norman Bird Sanctuary.

Pick up your seed on February 8 & 9 from 10 a.m. to 3 p.m. in the Sanctuary barn.

Name _____ Telephone _____

Address _____

QUANTITY	TYPE OF SEED	PRICE PER BAG	AMOUNT
_____	Black Oil Sunflower Seed -25 lb	\$ 7.82	_____
_____	Black Oil Sunflower Seed- 50lbs.	\$14.75	_____
_____	"Song Maker" quality mixed seed- 25 lbs.	\$ 6.56	_____
_____	"Song Maker" - 50 lbs.	\$12.24	_____
_____	Thistle Seed 5 lbs.	\$ 5.53	_____
_____	Peanut Butter/Suet Cakes 11 oz.	\$ 3.50	_____
Total \$ _____			
(RI sales tax is included)			

MEMBERS: TAKE AN ADDITIONAL 10% OFF ALL FEEDERS IN STOCK
WITH A PRE-ORDER PURCHASE OF SEED ON "SEED SALE" DAYS, FEBRUARY 8 & 9 1992

Norman Bird Sanctuary
583 Third Beach Road
Middletown, R.I. 02840

Non-Profit Org.
US Postage Paid
Newport, R.I.
02840
Permit No. 43

To Current Resident or



Calendar of Community Events

January 25: Save The Bay's 7th annual Land Use Conference "Greenways, Clean Bays", Newport Marriott 9 am-5 pm. Call STB 272-3540 for more information.

January 25: Friends of Sachuest Beach Clean-up. Call Jan Goodland-Metz 849-8120 for more info.

February 1: Natural Organic Farmers of RI (NOFA) Conference at Alton Jones in Kingston. Call Michael Hutchison 397-3304, or write NOFA P.O.Box 83 Peacedale R.I. 02883

April 25 and 26: Earth day festivities at NBS and Touro Park. Island Arts will oversee a special "Sculpture from Recyclables" workshop to be displayed at Touro Park. Call NBS for more info.

<input type="checkbox"/> Individual	\$ 20	<input type="checkbox"/> Sustaining	\$ 50	<input type="checkbox"/> Supporting	\$ 250
<input type="checkbox"/> Family	\$ 30	<input type="checkbox"/> Institution	\$ 100	<input type="checkbox"/> Benefactor	\$ 500
<input type="checkbox"/> Contributing	\$ 35	<input type="checkbox"/> Patron	\$ 100	<input type="checkbox"/> Life	\$1,000

Please Join Us Today !

Your membership supports our conservation and nature educational program efforts on Aquidneck Island, and our management and preservation activities here at the refuge.

Name _____
Address _____
Town/City: _____ State _____
Zip Code _____

Please return with your check, payable to:
Norman Bird Sanctuary
583 Third Beach Road
Middletown, R. I. 02840

The Norman Bird Flyer is published quarterly by the Norman Bird Sanctuary, a non-profit 450 acre nature preserve established under the will of Mabel Norman Cerio.

Trustee: Rhode Island Hospital Trust National Bank

Board of Directors: Anne Damon -Chairman, Betsy deLeiris -Vice Chairman, Al Marcantonio-Treasurer, Charles Moore-Secretary, Larry Allen, Dickson Boenning, Joyce Botelho, Thomas Gunzelman, Katherine Irving, Candace Powell, Ray Rogers, Gay Sheffield, Julie Toland.

Director: Lawrence Taft

Education Coordinator: Lisa Pritchard

Naturalist: Hap Morgan

Caretaker: Matt Benson

Secretary/Receptionist: Sue VanDerhoof

Address: 583 Third Beach Road, Middletown, R.I. 02840
(401) 846-2577

Winter Hours:

Open for hiking/cross country skiing
Tuesday-Sunday 9 am- 5pm

Open Monday holidays. Please, no dogs, horses or bikes.

Graphics include works by Lucia deLeiris, Amy Wright and/or UMD Illustration students under the direction of Bob Barry.

Printing by PDQ on recycled paper with soy ink

