

**INSIDE:**

Director's Notes on Gray Craig..... p. 2  
Spring Programs..... pgs. 4 - 10  
Summer Camp Info... p. 11  
Birds and Breakfast : May 17, 1992

## *The Norman Bird Flyer*

VOLUME NO. 13 ISSUE 2

A QUARTERLY NEWSLETTER

### **WOLF TREES , DEN TREES AND SNAGS**

**SPRING 1992**

The wooded area of the Sanctuary, like most woodlands in New England, is a second growth forest rebounding from a long history of agriculture. The stone walls that run through the woods and the few large spreading trees, called "wolf trees" which once served as shade trees along the edge of pastures now overgrown, are relics of this past land use.

Since our woods are relatively young, most of the trees are of the same age and are strong and healthy. But what makes a forest ecologically productive is not only a diversity of species but a diversity of age classes - a mix of young, mature, decaying and dead trees.

A snag is a dead tree that is still standing. Snags are important nesting, feeding or perching sites for birds and other wildlife. Until recently, foresters systematically removed snags because of their potential for harboring disease and insect pests. This practice is changing, and it is now widely recognized that many bird species that nest in snags are those that feed heavily on insects and thereby help prevent serious insect outbreaks.

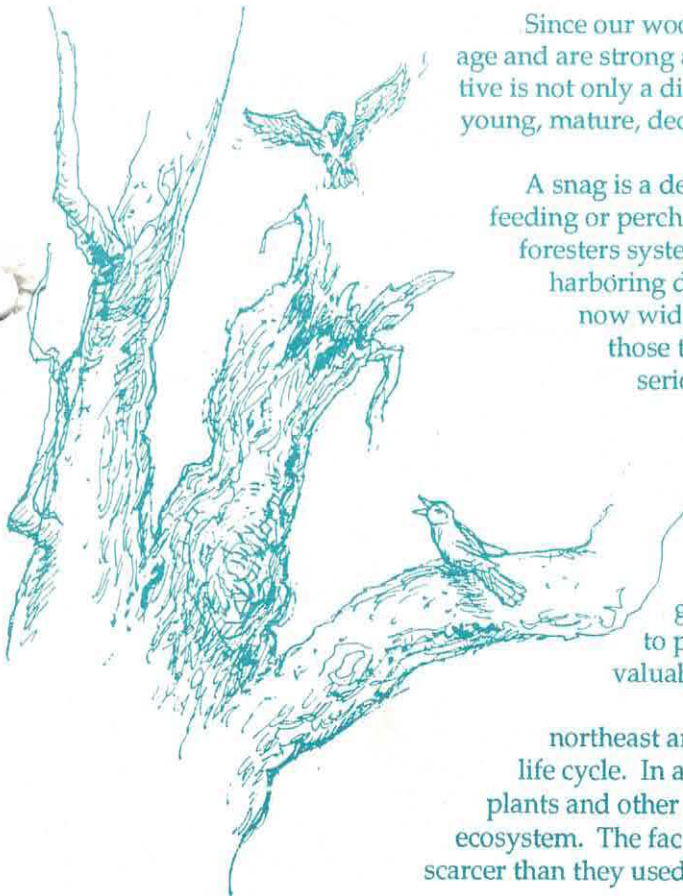
Den trees are those trees having the trunk or large limbs hollowed out by rotting, with an opening to the outside. These include some snags of course, but den trees are typically still alive and often continue to bear mast (nuts and fruit). Wolf trees are likely to make good den trees, and because they are larger, they also tend to produce more mast than others, making them especially valuable for wildlife.

Over 50 species of birds and mammals in the northeast are dependent upon snags and den trees during part of their life cycle. In addition they are used by great numbers of insects, fungi, plants and other animals. These trees are an important part of the forest ecosystem. The fact that many wildlife species are now scarce - or at least scarcer than they used to be - is due in part to the shortage of these trees.

Some cavity-nesting birds, such as woodpeckers excavate their own nest hole. These birds are called primary hole nesters. Others, like the Wood Duck and Kestrel, are secondary hole nesters - they use cavities excavated previously by another bird. Many mammals simply take advantage of hollow sections of trees caused by rotting.

The history of a large dead or dying tree reads like a wildlife field guide. The insects come first, even before the sap has hardened - borers, beetles, and the "grub" larvae of a thousand flying forms. Then the wood-

(Continued on page 2)





(Continued from page 1)

peckers, the smaller of the tribe ventilating the bark, the larger excavating deep "termite mines" in the still fresh wood. Water finds its way into the holes and speeds the rotting process. Fungi side-steps its way up the trunk. Gray Squirrels eat the fungi and nest in the woodpecker holes. Flying Squirrels eat the insects and also nest in the holes. Hawks and Great-Horned Owls eat the squirrels and nest in the dead branches. Each year there are new woodpecker holes; and the older ones get larger, housing new forest creatures. One year Screech Owls; the next, a pair of Wood Ducks from the nearby pond; the next a pair of Common Flickers - that may have started the first hole. Tree swallows, Red and White Breasted Nuthatches, chickadees, wrens, Brown Creepers, Tufted Titmice, Kestrels, White Footed Mice, Gray Squirrels and raccoons are a few of the long list of creatures that inhabit these trees. Gradually the creatures that use a dead or dying tree return it to the forest floor, where it may nourish a seedling that will, if permitted, grow and die, shelter and feed new generations of wildlife, then return to the earth to nourish another seedling.

Not all old dead trees make good snags. Hollow trees broken off at the top and therefore open to rain and snow provide little protection and are of little value. Snags are classified as either hard or soft. Soft snags are punky and weak, and though they are excellent foraging areas for insect eating birds, they are neither as long lasting nor as good for nesting habitat as are the sturdier, hard snags. Small diameter trees may be suitable for some kinds of birds but not for larger wildlife.

Not all tree species are equal in their potential for creating snags and den trees. Basswood and birch are good cavity produc-

ing trees, but most oaks (except black oak) are not. Short-lived tree species such as aspen and cherry often provide suitable snags before other forest trees



mature. Beech trees which are notorious for being infested with fungal heartrot often provide suitable cavities sooner than do the natural death and decay process in other trees, and therefore have great potential as wildlife den trees.

The hurricane last summer did much to increase the potential stock of snags and den trees on the Sanctuary. Over time, some of the broken trees along the trails may pose a safety hazard and will have to be removed, but many more within the woods will begin to provide, nesting, feeding and perching sites for the Sanctuary's wildlife.

Lawrence Taft

#### References:

- Decker, D. & Kelley, J. "Enhancement of Wildlife Habitat on Private Lands", Cornell Information Bulletin #181
- Raphael, M. "There's Life in Dead Trees", Biologue, Winter 1989
- Vermont Fish & Wildlife Department (1985) "Habitat Highlights" Vol. 5 #4
- Williams, Ted (1975) "In Defense of Deadwood, Decadence and Disorder"

## DIRECTOR'S NOTES-

It took over 3 years to do it, but this past January, The Norman Bird Sanctuary finally closed on the purchase of land and conservation easements at Gray Craig, the 81 acre property adjacent to the refuge.

Gray Craig is comprised of scenic ridges, fields, wetlands and forest and is part of a vast open space area which includes the Norman Bird Sanctuary, Sachuest Point Wildlife Refuge, Second and Third Beaches and Nelson and Gardner Ponds.

The Gray Craig Conservation Project was launched in 1989 in reaction to a plan to develop a 56 unit development on the property. The Sanctuary began alternate negotiations with the owners and reached an agreement which severely reduced construction and protects the environmental integrity of the land in perpetuity.

This project now protects the municipal water supply, sensitive environmental habitats, scenic views and contiguous open space by permanently protecting nearly 50 acres of valuable open space on the property through the purchase of land and conservation easements and by restricting development on the remaining property. It reduces construction from the planned 56 units to a maximum of 23 (no more than 12 of which are new construction and the balance to be located on the sites of existing structures), it directs development away from the reservoir, Paradise Brook, and other environmentally sensitive areas and it opens 14.5 acres of land for public access.

The capital campaign organized by the Sanctuary raised \$1.6 million for the purchase by January of 1991. The Project also



received a national environmental achievement award in 1990.

This winter, we established a committee to begin monitoring those areas that are protected under conservation easements. This Spring we will also be organizing volunteer crews to begin blazing a new trail onto the 14.5 acre parcel for public access. If you are interested in assisting us in this task please call us at the Sanctuary office.

Best wishes for the Spring season,

*Larry*  
Larry



Announcing our first...  
***Birds and Breakfast***  
***Bird House Contest***  
for children and adults

Rules:

1. Construct a birdhouse-  
(either decorative for indoors, or  
functional for outdoors)
2. Bring it to us by 5 pm Saturday,  
May 16, 1992
3. Houses will be used to decorate the  
barn during the breakfast,  
May 17, 1992

*Ribbons awarded in the following  
categories:*

children ages 5-8  
children ages 9-16  
adults  
for

decorative (indoors):

-most creative  
-funniest  
-most recycled

functional (outdoors):

-most species specific  
(properly sized/bird)  
-best constructed  
-most recycled

## VOLUNTEERS AND DONATIONS-

The winter season at the Sanctuary was short and sweetened by the help of those individuals and/or businesses that donated their time or quality goods or services:

Mailings: Robin Longshaw, Helene Pritchard, Lisa Utman, Natasha Harrison, and Leona Sullivan.

Education Bobbi Lamont, Mary Beth Hunte, and Marilyn Lyell. Grif Venator, Joan Thomas, Sharon Culberson, and Micrographix

Animal Care/Donations for animals:

Emily Leslie, Laura Mazuroski, Forster Peabody, Mike and Karen Kosinski, Georgia Kocak, Michelle Vivieros, Joellen Densley, Matthew Oakley, Landon Merrill, Hera Tar, Evan Moore, Cathy and Brandon Piwoni, The Callahans, Pat Del Tredici, The Jarret family, Adele's Pet Emporium, Clement's Market and Star Market.

The following individuals have made generous donations in memory of Howard Peterson:

Margaret and Neil Sullivan  
Elizabeth and Edgar Arnold  
Kathleen Creaney  
Rosanna Worthen  
Paul Martellino

### In Our Thoughts-

The Sanctuary lost a volunteer and friend with the death of Poyntell "Pete" Staley in January. Mr. Staley had been part of our corps of animal care volunteers since the Spring of 1990, coming in every Monday afternoon to feed, water, clean up after, and provide general care and attention to the Sanctuary's hawks, owl, sheep, rabbit and other educational display animals. Pete was a man of few words, but he seemed to really enjoy his volunteer job. We appreciated having him as a dedicated volunteer, and we will miss him.

## Lots of Important Spring Volunteers are needed...

-Bakers, Workers, and Bird Walk Leaders for Birds and Breakfast (Sunday, May 17, 1992). Please call and leave your name and daytime phone number if you can lend a hand for this special annual event. (Workers assist for approximately two hour shifts)

-Weeders and Waterers for our perennial, herb, children's, and hummingbird gardens throughout the Spring and Summer (1-3 hours per week).

-Children's Garden Committee to plan, plant and maintain a new 20' x 80' children's garden for use by visitors and NBS programs during the summer. Children and adults are welcome to take part in this project. A 3 month commitment is requested, approximately two hours per week.

-Weekend Receptionist to assist Sanctuary staff in greeting visitors, collecting trail fees, and answering the phone. A commitment of one weekend afternoon, especially Sunday (4 hours per week) for the Spring, Summer and/or Fall season is requested, as often as your schedule permits.

-Teacher/Naturalist Docents to help the educational staff teach Spring school groups at the Sanctuary. Training will be provided. A commitment of one, two hour walk per week through the Spring is requested.

-Painters needed to help us paint the trim and walls of the kitchen and bathrooms of the NBS barn after 3 pm on Saturday, April 11 and/or Sunday April 12. You can stay as long as you like and then... maybe the painting party will progress into a pizza party!

For more information about any of the above volunteer positions, please call NBS 846-2577

*Also, ask about our 'Bird- a- Thon'  
going on that same day!*



## EARTH DAY EVENTS-

The Norman Bird Sanctuary will help celebrate this global holiday by participating in the Earth Day Fair at Touro Park on Saturday, April 25 (Raindate: Sunday, April 26). Look for our big Earth Ball! We hope to see you there!

**Island Arts** invites interested children and adults to help them create a "Recycled Sculpture" using "flotsam and jetsam" from the area beaches. If you would like to participate in this event, contact NBS. The group will meet at NBS on Saturday morning, time TBA.

**Prior to the Fair...** when the birds are singing and the rest of the world still sleeps, join us for a "Sunrise Celebration" on Hanging Rock. Bring a spiritual message, favorite poem, or your thoughts about Mother Earth. Call NBS for exact time of this event. If rainy, it will be postponed until Sunday morning.

**Earth day resolution:** Give up your "Bug zappers"! Studies indicate that these lights do not lure mosquitos. Instead, out of 3,212 insects zapped on an average night, only 3.3 percent were female mosquitoes! Insects attracted to the lights include many beneficial insects such as lacewings, crane flies and pollinating moths. Mosquitoes, on the other hand are attracted to the carbon dioxide emitted by humans and other animals, not ultra violet light. So, unplug those useless machines. Instead, buy some citronella patio candles, put up a bat house (bats can eat 600 insects/hour!) and stock up on your pennyroyal oil, all to save some good bugs on this fragile planet!



ARE HARD TO FIND



## Animal Pause-

**Chicken necks needed:** We are regretting the recent closing of Star Market in Middletown. For many years they were our best supplier of chicken necks for our resident owl and hawks. Paul and his staff were always friendly and went out of their way to save, freeze, and donate free of charge large quantities of the necks until we could pick them up. (Chicken necks are easily swallowed whole by the owl.) So, we are putting out a general request to our members -bring us your necks! Freeze them if you can't get out here on a regular basis. The staff and the birds will appreciate your help!

**Injured wildlife:** The winter season was quiet with a relatively small number of injured animals brought in. Since we do not promote rehabilitation as one of the Sanctuary's goals, the slow season was a relief. In the past few years, we have had to limit any rehabilitation by the availability of staff and the degree of care needed. The Sanctuary will act as a referral and information center concerning nuisance animals or animals needing veterinary assistance. We cannot however, go out and pick-up animals on a regular basis nor can we provide veterinary care. Furthermore, with the onset of rabies so close to R.I., we cannot take any target animal on the premises as directed by the state i.e. raccoon, skunk, fox, or bat. If you would like to help us take care of any injured or young displaced animals, you will need a permit, lots of devotion and proper housing facilities. Please contact DEM for guidelines on obtaining a wildlife permit. Call Lori Suprock at 789-0281.

**Window fatalities:** With the Spring season getting underway, many birds are setting up territories and looking for mates. With this increase in activity comes many window fatalities, as the birds see their reflection in the windows and embark on a pursuit. If a bird hits your window, it may be only stunned for ten minutes and then fly off. Worse, it may break its neck, or suffer brain damage. Death will usually be immediate, but not always. Sometimes, shock may set in. Often it is the shock is treatable by swiftly and carefully placing the injured bird in a small covered box and waiting an hour or two. If recovered, the bird will be able to fly off and resume its annual courtship activities.

The Sanctuary store sells "window hawks" that adhere to a window and look like a predatory hawk. This simple device can scare songbirds away from a potential window hit. Other preventatives include placing fine netting outside your windows, or window socks or chimes to break the reflection, make noise and move intermittently.



## FAMILY EVENT-

### Whale Watch

with the Center for Coastal Studies

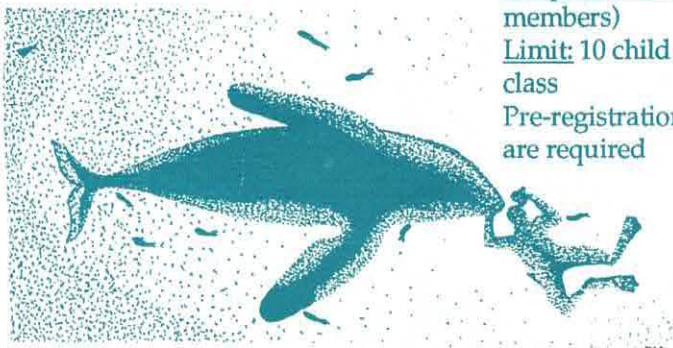
Saturday, June 6 8:30 am

Meet at NBS if you would like to carpool.

Every year the NBS staff looks forward to this wonderful trip to Provincetown in a search for the mysterious creatures of the sea, the whales. Please join us as we board one of the boats of the Dolphin Fleet- the only vessels that work in cooperation with the scientists from the Center for Coastal Studies who study the migration of the Humpback, Minke, Right, and Finback whales as they swim northward during this season. The four hour boat trip will depart at 12:45 pm and return at approximately 5 pm. Participants should dress appropriately for the weather. Food is not included, but may be brought from home, bought on board the boat, or in Provincetown before or after-ward. Binoculars, sunscreen, and cameras are recommended. The trip will be cancelled if the weather is strongly inclement, and the fee for the trip will be refunded. Children are welcome, but must be accompanied by an adult.

Fee: \$22 (\$18 NBS members) adults  
\$17 (\$15 NBS members) children  
Pre-registration and pre-payment are required by May 21.

To register for Spring programs, please use the registration form on page 10



## CHILDREN'S PROGRAMS-

### April Vacation Week

Tues.-Fri. April 21-24 9:30-12:30

Look for the signs of Spring as nature wakes from her long winter's nap. We'll spend more time exploring the outdoors, including hiking, playing games and greening up the Children's Garden. Dress for the weather. A healthy mid-morning snack will be provided. Vacation week is for children in grades K-4.

Fee: \$36 (\$32 NBS members)

Limit: 20 children

Pre-registration and pre-payment are required.

### Preschoolers with Parents

#### Nature Hour

Wednesday mornings 10-11 am  
-or-

Wednesday afternoons 1-2 pm

This popular program has openings in both morning and afternoon sessions. With the help of our Parent Volunteers, Mary Beth and Marilyn, these sessions will offer natural themes as an introduction to nature for a parent or guardian and his/her 3-5 year old. Crafts, walks, songs, and animals will all be a part of the Spring session. One adult may be responsible for two children. Please specify morning or afternoon session.

### Spring Session

May 6: Nature's Moms

May 13: Flowers and Bugs

May 20: Exploring the Shore

May 27: Spring Senses

Fee per session: \$12 (\$10 NBS members)

Limit: 10 child/parent pairs per class

Pre-registration and pre-payment are required



### Down To Earth Day

Saturday May 2 10-2 pm

Have you ever wanted to go marsh mucking ?! On this day, we will explore the local marshes looking for frogs, turtles, seldom-seen plants and whatever else may be lurking ! Wear old clothes and rubber boots or old sneakers. Bring "bug juice" for the "squitoes" and a bag lunch for yourself. We'll have lots of fun, so bring your good sense of humor too! This day is for children in grades K-4.

Fee: \$15(\$12 NBS members)

Limit: 8

Pre-registration and pre-payment are required.

### Spring Night Hike

Friday, May 15 7:30-9 pm

Use your night senses to explore the Sanctuary's trails while looking and listening for nocturnal wildlife. Find out how your night vision rates in the animal world, and how the Sanctuary feels under the light of a full moon. Wear sturdy shoes and eat lots of carrots before you come! Children in grades 2-5 are welcome.

Fee: \$6 (\$5 NBS members)

Limit: 10

Pre-registration and pre-payment are required

Turn the page for more children's programs →



## CHILDREN'S PROGRAMS continued...

### Hummingbird Habitats- Wednesday, June 10 4-5 pm

Plant a garden and make a birdfeeder for the Ruby throated Hummingbird, our one local species of "hummer". Red, purple, and yellow flowering plants will be planted in the Sanctuary's Hummingbird garden. A simple birdfeeder to take home and directions for your own home "hummer" garden will be passed out. Children entering grades K-4 are welcome to participate.

Fee: \$7 (\$5 NBS members)

Limit: 10

Pre-registration and payment are required



### Island Arts Spring Series at NBS-

Island Arts, founded and taught by Natasha Harrison and Lisa Utman is an organization aimed at providing low cost, innovative art experiences for children. In cooperation with NBS, Island Arts is offering the following "natural art" classes for the Spring season. For more information about Island Arts and scholarship assistance, please call Natasha at 847-4240 or Lisa at 848-0307. To register, please use the form provided through NBS.

4/25 Saturday:

**Earth Day Sculpture** -Free- See description with Earth Day events.

4/28, 5/5 and 5/12, Tuesdays after school 3:30-5:30 pm:

**Children's Garden Sculpture**- Come and create a permanent, functional and wonderfully recycled sculpture for the NBS Children's Garden. Materials will be provided. For children in grades 2 and older. Limited to 12 and scholarship assistance is available.

Fee: \$27 (\$24 NBS members). Pre-registration and pre-payment required.

5/19, 5/26, 6/2, and 6/9, Tuesdays after school 3:30-5:30 pm:

**Handmade Papersculpting**- Learn the full process of sculpting with handmade paper using a clay positive and plaster mold. Weave natural scents and discoveries through your creation for an earthy effect. For children in grade 2 and older. Limited to 14 and scholarship assistance is available.

Fee: \$34 (\$31 NBS members). Pre-registration and pre-payment required.

5/16 and 5/23, Saturday afternoons 1-3 pm:

**Indian Arts**- Children in grades K-4 will make symbolic masks to take home and a tribal totem pole to be displayed at the Sanctuary. Dance for thunder and call to the ancient spirits!

Fee: \$ 19 (\$16 NBS members). Pre-registration and pre-payment required.

*We must ask children and birds how  
cherries and strawberries taste.*

*-Goethe*

### Spring Events In the Children's Garden

Join us during the Spring for some on-going events in the Children's Garden. Sharon Culberson has offered to be the "Gardener-in-Residence" to lend her expertise in the planning and planting of the eight raised beds. But, we need your help as well, especially if you are a kid! How about some "Bean Teepees" or a "Butterfly Flower bed"? Let's hear your ideas and put them into the dirt! Special dates include:

April 21 and 23 (public school vacation week) 10 am-12 pm for planning and planting of early Spring seeds. Families invited. Wear old clothes.

May 2 (Saturday) from 3-4 pm for transplanting and painting of the worm bin. Families invited. Wear old clothes.

Thus far, we appreciate the efforts of Sharon, and her husband Dennis, Sarah Busenbark, Pam Zabel, Margarite, Kali, and Casey Crocker, Alex O'Donnell, and Glenna McCaffrey for their volunteer participation in the early planning and cleaning out of the garden. Also to Agway of Portsmouth, for the donation of children's gardening tools.



## PUBLIC PROGRAMS-

Spring Migration Bird Walks-  
Sunday Mornings 8:00 am  
March 1 - June 14

The best time to see birds at NBS is during the Spring migration and early Summer courting season. During migration, a wide variety of songbirds that are "just passing through" make a brief appearance at the Sanctuary and are most visible during that short period just before the leaves reach full size. Species that will nest here are actively courting and defending their territories. Join Sanctuary Director, Larry Taft for these walks.

Fee: free

Pre-registration is not required, except for the walk on 4/12 described below

### Special Bird Walks...

Birding Along Cliff Walk  
Sunday, April 12 8-9 am (weather permitting)

Newport's Cliff Walk is a beautiful 3.5 mile greenway that overlooks the Atlantic. Join Sanctuary Director, Larry Taft, on this 1-hour Sunday morning bird walk to sight some of the remaining sea ducks off the coast as well as some of the recent spring arrivals on shore. Meet and park in the rear parking lot at Cliff Walk Manor. Please pre-register by Saturday April 11.

Birding By Ear

Sunday, May 3 8-9 am (weather permitting)

Don't bother bringing your binoculars on this Sunday morning birdwalk, but be sure to bring your ears! On this walk we will identify the Sanctuary's avian residents by sound rather than by sight. The birds will oblige us with their songs and calls of Spring.

Hilltop Gardens Tour and Tea  
Saturday, May 23 2-4 pm

Stroll through the fragrant and colorful organic herb, flower and vegetable gardens of Sharon Culberson in Tiverton, R.I. She'll help identify plants grown for both drying and culinary pleasures. Then, join her for a taste of refreshing herbal teas and sweets in the courtyard overlooking the gardens. Participants can meet at the Sanctuary to carpool, or can get directions to meet the group there.

Fee: \$10 (\$8 NBS members)

Pre-registration and pre-payment are required

Medicinal Herbs of Aquidneck Island

Friday, May 8 7 pm at Swinburne School

Aquidneck Island abounds with medicinal herbs. The fields, forests or your own backyard may serve to be your own personal medicine chest. During this evening's class, a slide presentation of local medicinal herbs - where to find them, when to harvest, and how to make them into medicines will be discussed. Participants will also take home recipes for healing salves and liniments as well as a blend of "Vitali-Tea".

Fee: \$6 (\$4 NBS members)

Pre-registration and pre-payment are required

Spring Flora Walk-  
Saturday, May 30 9-11 am

The columbines, mayflowers, and the wood anemones are wild and wonderful Spring flowers that one will find on the woodland trails. On this walk, Hap Morgan, NBS Naturalist will help participants search for these wild, as well as other introduced species of flowers that are now in bloom. The natural history, folklore, and medicinal usage of these plants will be covered during this hike.

Fee: \$6 (\$4 NBS members)

Limit: 12

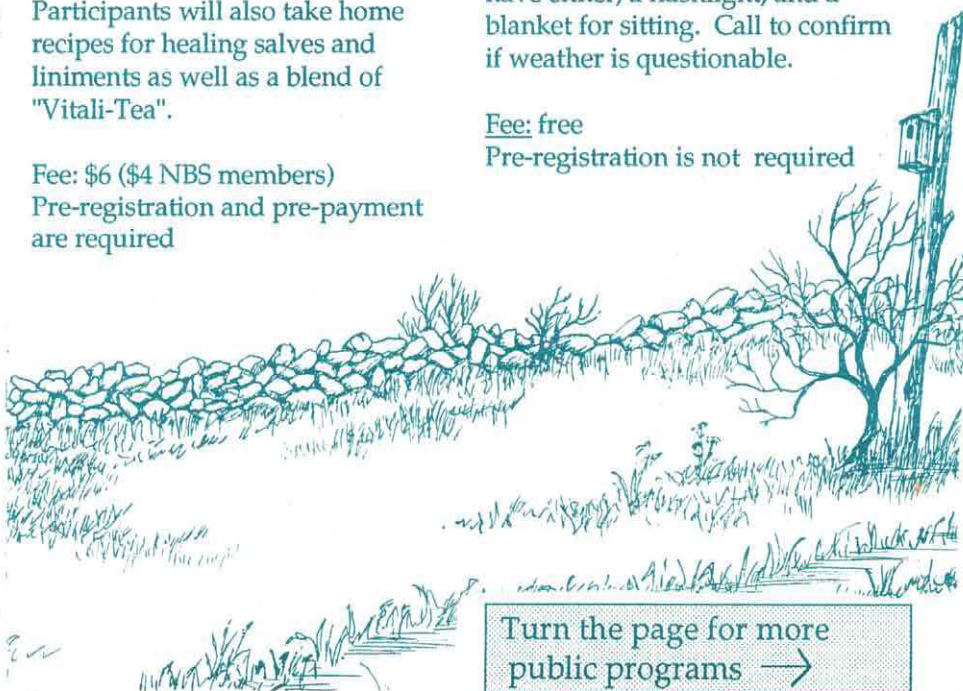
Pre-registration and pre-payment are required

Star Gazing without a Telescope  
Thursday evenings  
May 28 and June 25 9 pm  
(Cloud date: The next day, Friday)

Venus, Mars, and Jupiter will all be visible with the Spring and Summer constellations on these moonless nights. Bill O'Connell, the Sanctuary's volunteer "planetary enthusiast" will be on hand to guide you through the heavenly bodies. Bring binoculars or telescope if you have either, a flashlight, and a blanket for sitting. Call to confirm if weather is questionable.

Fee: free

Pre-registration is not required



Turn the page for more  
public programs →



## PUBLIC PROGRAMS continued ...

Aquidneck Island's Natural History: Project ISLLE for adults  
Thursdays June 11 & 18 7-9 pm at Swinburne School  
Saturdays June 13 & 20 2-4 pm at NBS

In cooperation with Swinburne school and at the request of many parents of 4th graders who are familiar with "P.I." in their schools (an acronym for Island Schools Learning About their Local Environment"), we are proud to offer this four-part class taught by NBS Naturalist, Hap Morgan. During the class, participants will learn about the geology, geography, and natural history of the plants and animals unique to "our island". Two of the classes will be held inside at Swinburne and two will be outdoor field trips at the Sanctuary.

Fee: \$48 (\$43.50 NBS members)  
Limit: 15  
Pre-registration and pre-payment are required

Medicinal Herb Walk  
Tuesday, June 23 6:30 -8 pm

Herbalist and Naturalist Hap Morgan will lead a walk through the fields and woodland of the Sanctuary teaching about the many different types of wild plants that may be used for simple home remedies. Discussion about when to harvest, how best to dry, and what medicinal use each herb has will be the focus of this walk. This program is being co-sponsored by Swinburne School.

Fee: \$8 (\$7 NBS members)  
Limit: 15  
Pre-registration and pre-payment are required



Market Basket Making Class  
Saturday, June 27 10 am-2 pm

Much like the classic English "garden trug" used to carry the summer blooms and herbs in from the garden, this basket combines flat reed and round reed weaving. Sharon Culberson will help guide beginners as well as those who are already familiar with the craft. Bring a bag lunch and scissors.

Fee: \$28 (\$25 NBS members).  
Limit: 10  
Pre-registration and pre-payment are required.

Fresh Flower and Herb Wreath  
Saturday, July 11 1-3 pm

Using a 6" moss base, participants can add fresh sprigs of garden flowers and herbs such as thyme, santolina, lavender, and lamb's ear to complete an aromatic wreath for the Summer season. Sharon Culberson will be the instructor for this class. Bring scissors.

Fee: \$21 (\$18 NBS members)  
Limit: 10  
Pre-registration and pre-payment are required

Nature in Your Neighborhood Walks

Call us to arrange for a Spring or Summer walk in your neighborhood. The Sanctuary staff would like to share some of our natural history knowledge with you in your neighborhood. Whether its in downtown Newport, or in a suburban setting, nature lives! We'll help you identify plants between the sidewalks, learn about the animals that visit your yard, or explore the neighborhood's "empty lot". The walks will be suited for families, or adults. There will be no fee charged other than a donation to the Sanctuary. Spaces are limited, so please call early.



Women In Nature Weekend  
Sat. May 9 1 pm -  
Sun. May 10 10 am

Women, young and older are invited to join us for this Spring overnight gathering to celebrate the season of renewal, outdoor learning, and group cooperation. Hiking, natural crafts, stories, fire-building, and sleeping under the stars will make up this mini "get-away" from home. We'll celebrate the start of "Mother's day" on Sunday morning to leave you with a refreshed peace of mind. A list of suggested camping gear and clothing will be sent upon registration. Food for Saturday dinner and Sunday breakfast, tents, and instruction will be provided.

Fee: \$32 (\$28 NBS members)  
Limit: 10  
Pre-registration and pre-payment are required by May 5, 1992

Herbs and Natural Healing: An Apprenticeship with Hap Morgan

Tues. and Thurs. eve. July 7, 9 & 14 6-8 pm

The fundamentals of herbalism, the medicinal usage of plants, and the identification of local plant species will be the focus of this three-part class. Techniques of wildcrafting, gathering plants and preserving them will be emphasized with the help of field guides and herbals. Participants will make herbal salve, a liniment, and a blend of tea for simple home remedies. Please bring a small wide mouth jar, a 1 oz. bottle, and a small bag or jar for the tea.

Fee: \$44 (\$37.50 NBS members)  
Limit: 10  
Pre-registration and pre-payment are required

To register for Spring programs,  
please use registration form  
on page 10



# Birds and Breakfast

## May 17th



★  
break-  
fast  
seatings  
at

7:30  
8:30  
9:30  
and 10:30

★  
bird  
walks  
start  
at  
6:30am

★  
join  
the  
birdathon

★ enter the  
birdhouse  
contest

★ adults \$5.00  
children \$3.00

★  
reservations  
suggested  
846-2577

### Ticket Information

Please send me \_\_\_ adult tickets and \_\_\_ children's tickets for the NBS Birds and Breakfast 1992  
(Adults: \$5; Children, ages 3-12: \$3 )

My preferred breakfast seating is \_\_\_ 7:30 \_\_\_ 8:30 \_\_\_ 9:30 \_\_\_ 10:30 (Please check first and second choice)

\_\_\_ I am unable to attend, but would like to contribute \$\_\_\_ to benefit the Sanctuary's Conservation Projects

\_\_\_ I would like to donate \_\_\_\_\_ to be raffled at Birds and Breakfast 1992.  
Please call me at \_\_\_\_\_ during these hours \_\_\_\_\_.

\_\_\_ I plan to participate in the 1st annual NBS "Bird-A-Thon" during Birds and Breakfast on  
May 17. Please send me a sponsor sheet and more details.

\_\_\_ I would like to enter a hand-made birdhouse in the " Bird House Contest ". I will drop it off by Saturday,  
May 16, 1992.

Name: \_\_\_\_\_ Phone #: \_\_\_\_\_

Address: \_\_\_\_\_ State: \_\_\_\_\_ Zip: \_\_\_\_\_

Amount Enclosed \$\_\_\_\_\_ Please make check payable to the Norman Bird Sanctuary. Send to NBS 583 Third  
Beach Road, Middletown, R.I. 02840

(Tickets will be mailed to the address above through Wed., May 13. After which, we will hold them at the door  
for you.)



## Program Registration

Please complete and return with payment for program registration. If you need more space for additional registrants, please copy this form.

Name: \_\_\_\_\_ Grade: \_\_\_\_\_  
Address: \_\_\_\_\_ Age: (if child) \_\_\_\_\_  
Town: \_\_\_\_\_ Phone: Home: \_\_\_\_\_ Work: \_\_\_\_\_

	Program Title	Date(s)	Program Fee
1.	_____	_____	_____
2.	_____	_____	_____
3.	_____	_____	_____

## Parent Authorization Emergency Form

For children ages 16 and under attending NBS programs, parents must complete the following:

Child's name : \_\_\_\_\_  
Parent or Guardian : \_\_\_\_\_  
Phone Number(s) where we can reach you during program hours: \_\_\_\_\_

Neighbor or Relative: \_\_\_\_\_ Phone: \_\_\_\_\_  
Doctor: \_\_\_\_\_ Phone: \_\_\_\_\_

Allergies/Medications/Special Needs:

Waiver: In the event that I cannot be reached in an emergency, I hereby give my permission to the Norman Bird Sanctuary's staff or medical personnel to take emergency measures as necessary.

Parent Signature: \_\_\_\_\_ Date: \_\_\_\_\_

## NBS membership:

To become a member or to renew membership, please check appropriate category and include dues in the registration check.

☐ New ☐ Renew ☐ Indiv. (\$20) ☐ Family (\$30) ☐ Contributing (\$35)  
☐ Sustaining (\$50) ☐ Institution (\$100) ☐ Patron (\$100)  
☐ Supporting (\$250) ☐ Benefactor (\$500) ☐ Life(\$1000)

Please make checks payable to Norman Bird Sanctuary.

Send to: NBS  
583 Third Beach Road  
Middletown, R.I. 02840

**TOTAL AMOUNT ENCLOSED:** \_\_\_\_\_



## PROJECT ISLLE Update

Now in its second year, this seven-part environmental education program continues to reach 13 fourth grade classrooms on Aquidneck Island and in Little Compton. Hap Morgan, NBS Naturalist comments, "I'm enjoying being able to teach kids about the island and its wildlife."

For the Spring, the students are working on their "Island Wildlife Guides" which will be distributed to the students and their families, as well as to their school libraries and town libraries. The guides are made up of brief natural history reports and illustrations by the students detailing information about animal that live in the area.

As "Travis" from Middletown's Elementary Annex wrote in a thank you letter, "The thing I liked about "Project ISLLE" is, it's a better way to learn. P.S. I can't wait to come back [to NBS on a Spring field trip]." We agree with him and we're proud to offer this program. Project ISLLE is partly sponsored by the Rhode Island Foundation.

## IEPP with THE NATIONAL AUDUBON SOCIETY CONTINUES...

As reported in the NBS Winter Flyer, The Sanctuary is participating in IEPP (International Environmental Partnership Program) with St. Georges School, three elementary schools- Underwood, Oliphant, and Coggeshall, and six Trinidadian schools. Beginning in April, two St. Georges students will monitor Tree Swallow nesting boxes, teach elementary students about wildlife and exchange data with Trinidad. All the students have received and sent exchange boxes, complete with songs, stories, lessons on bird ecology, illustrations and a video. Through IEPP, the Sanctuary hopes to share environmental concepts locally and globally.

## SUMMER HAPPENINGS-

### Summer Employment Opportunities:

**Youth Conservation Program:** YCP participants will work with a supervisor on trail maintenance and wildlife conservation projects. Applicants must be at least 14 years old, have an interest in natural history and be able to perform vigorous outdoor work. A small stipend is provided.

**Teacher Naturalist Assistant:** One very important "TNA" will be needed to assist Teacher Naturalists during the 1992 summer camp season. Interested applicants should be at least 15 years old, enjoy working with small children, and love to explore nature. The camp runs from June 22 -to August 28 (includes a training week). Wages are \$4.45 per hour. Call or stop by to pick up an application.

For more details and applications contact the NBS office. Application deadline for both jobs is May 16th.

### Sponsor A Child

Each year, NBS members have graciously sponsored needy children who would benefit from a full week at Nature Day Camp, (grades K-4) or Summer Challenge (grades 5-7) during the summer months. Agencies and schools, including Child and Family Services, Project Head Start, the Jamestown School and Gaudet Middle School have helped us locate these children. If you or your business wishes to be a sponsor for one, or many of these children, please enclose a check for the member's fee per child, specifying Nature Day Camp or Summer Challenge and send care of NBS Summer Camp Sponsor Fund, by May 15, 1992. Your generosity will be appreciated.

### Nature Day Camps 1992

Have you received your summer camp brochure mailed prior to this issue of the NBS Spring Flyer? We sent it out separately to all our members. If you did not receive one and you're a current member, please give us a call.

### Summer Housing Sought

Each year, the Sanctuary hires Teacher Naturalists to teach during the Summer months at our Summer Camps. Many of these qualified applicants live out of state and are in need of room for the season. If you have a room, cottage, or apartment available in exchange for a modest rent or situation, please contact Lisa at NBS as soon as possible.

## COMMUNITY CALENDAR-

April 11: Walk at Goosewing Beach. Call R.I. Nature Conservancy 331-7110

April 25: Earth Day Fair, Touro Park; Clean up at Goosewing Beach, Little Compton and Fogland, Tiverton. Call Nature Conservancy 331-7110

May: TBA Household Hazardous Waste CalIDEM 277-2808 for location and date.

May 17: NBS Birds and Breakfast  
May 31: Guided Canoe Trip on Wood River. Call Nature Conservancy 331-7110

June 13: Save The Bay Junior Member Annual Mtg. Call STB 272-3950

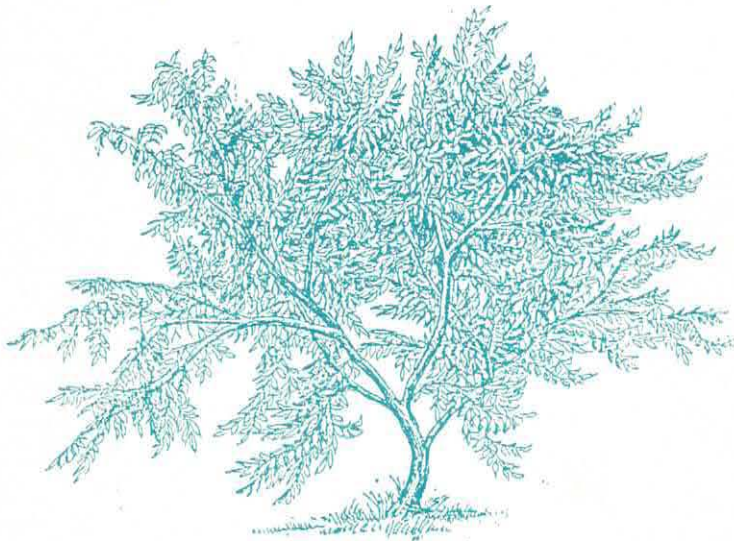
Ell Pond Walk. Call Nature Conservancy 331-7110.

June 16: NBS Annual Meeting details TBA

August 3: NOFA (National Organic Gardeners Association) meeting at NBS 7 pm. All invited.



To Current Resident or



**Spring Wish List:**

- compact washer and dryer
- SE/30 MacIntosh computer
- children's garden tools
- chicken necks (for the owl !)
- electronic cash register
- portable bulletin board
- clean, comfortable 8 x 12 braided, or finished rug (for children's programs)

**Calling all interested and enthusiastic volunteers...**

We need YOU to chair one of our  
1992 Harvest Fair Committees  
(parking, publicity, auction, to name a few)  
for the fair on October 3 and 4, 1992

- Work with dedicated staff and "expert" volunteers , -
- A commitment of one monthly meeting, 1-10 hours a month of preparation and the Fair weekend.

**Can you help us ? Please let us know !**

*The Norman Bird Flyer* is published quarterly by the Norman Bird Sanctuary, a non-profit 450 acre nature preserve established under the will of Mabel Norman Cerio.

Trustee: Rhode Island Hospital Trust National Bank  
Board of Directors: Anne Damon -Chairman, Betsy deLeiris -Vice Chairman, Al Marcantonio-Treasurer, Charles Moore-Secretary, Larry Allen, Dickson Boenning, Joyce Botelho, James Burrell, Thomas Gunzelman, Katherine Irving, Allen Libby, Candace Powell, Ray Rogers, Gay Sheffield, Julie Toland.

Director: Lawrence Taft

Education Coordinator: Lisa Pritchard

Naturalist: Hap Morgan

Caretaker: Matt Benson

Secretary/Receptionist: Sue VanDerhoof

Address: 583 Third Beach Road, Middletown, R.I. 02840

Spring Hours:

Open for hiking, Tuesday-Sunday 9 am- 5pm

Open Mondays beginning Memorial Day

Please, no dogs, horses or bikes.

Graphics include works by Lucia deLeiris, Amy Wright and/or UMD Illustration students under the direction of Bob Barry.

Printing by PDQ on recycled paper with soy ink.

