

Inside this Issue:

Changing Seasons.....pgs.1 & 2

Nature's palette and the changing colors of autumn. Welcome Lauren Parmelee.

Director's Notes..... pg. 3

Successful nesting of piping plovers on Second Beach, the sad plight of the pilot whales & farewell to Fred.

Kid's Page.....pgs. 4

Norman's fun activity page for children.

Pull-out Calendar.....pgs.5-8

A listing of Sanctuary events and programs in a handy pull-out format.

Educational Programs.....pgs.6-7

Complete listing of programs for children & adults.

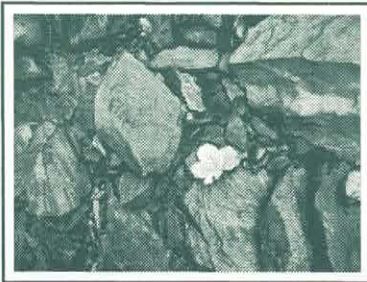
Trails & Tails.....pg.9

Hope Wildlife Rehabilitation Laboratory opens.

Volunteers & Events.....pgs.10 & 11

Summer Entertainment Series a success, What's Cooking this Fall, and new mural dedication.

Sanctuary Photos



Melissa Ellis photos

THE FLYER



the norman bird sanctuary newsletter

The Colors of Nature



by David Collins

What a gift! I close my eyes, and it's as if I am transported, on this hot, muggy August day, into the soft light of autumns past. I remember how beautiful the golden light of fall looks as the colors come to life. The soft, muted jewel tones of maples, hickories, ashes and oaks glow as I stride through past Septembers and Octobers in my mind. Glorious fall afternoons in Missouri and Kansas are a part of my being - the wonderful smells, colors, soft, cool breezes, and sometimes very warm temperatures, still live in my memory.

And now, living in Rhode Island where fall colors can be even more spectacular, I am eagerly awaiting the beauty of New England's autumnal offerings. But how do such extraordinary color schemes come to blossom on Nature's fall canvas? And where do all those cooling shades of green go?

As fall progresses, the hours of daylight are waning - less time to play outdoors in my woods. The nights are

increasingly cool - soon winter will be wielding Nature's paint brush. The shorter daylight hours inevitably have an effect on the landscape around me, including the trees, which derive their green color from a chemical called chlorophyll. It changes

I am eagerly awaiting the beauty of New England's autumnal offerings.

water and carbon dioxide into glucose, a sugar that provides energy to trees. This entire chemical reaction is called photosynthesis, and occurs only in the presence of sunlight.

As winter approaches, photosynthesis ceases, because of the lack of light and water. Trees become dormant and live off the food stored during the summer. The leaves, where chlorophyll is stored, shut down photosynthesis, and the green colors disappear, revealing the yellows (xanthophyll) and oranges (carotene) which were there all along. Bright reds and purples (anthocyanin) are the

result of glucose that is trapped in the leaves when photosynthesis ceases. Glucose in the leaves becomes a bright red during the fall, as it is exposed to cool nights and short periods of sunlight.

The brown of the oak leaves, produced by tannin, is also a waste product of photosynthesis left behind in the leaves. Various combinations of these colors create the beautiful shades of yellows, reds, oranges, and browns decorating our favorite autumn vistas.

The tannin also has an interesting effect in streams. When leaves fall into the water and begin to decompose, the tannins or tannic acid are released. As the water rushes around and over rocks, the tannic acid froths into a bubbly, foamy consistency. These fragments of tannic-foam floating on stream beds look more like soap bubbles from a washing machine, than a sign of leaves decomposing.

Leaves are not the only colors that are center-stage during the autumn months. Berries become beacons for birds, raccoons, bears

Continued on Page 2

Board of Directors

Jay Manning
CHAIRMAN

Christopher Greene
VICE CHAIRMAN

Jean Lambert
SECRETARY

Charlotte Yeomans
TREASURER

Gail Abromitis • Larry Allen
• Brian Arnold • Lorrie Burns
Bob Barlow • Clay Commons
• Anne Howell • Constance Sullivan
• John Woodhouse, Jr.

Staff

Each staff member has an identifying icon. Please follow the guide to identify articles in the newsletter.



Betsy de Leiris
EXECUTIVE DIRECTOR



Lori Cochrane
DEVELOPMENT COORDINATOR



Veronica Hinds
PROPERTY MANAGER



David Collins
EDUCATION SPECIALIST



Heather Ford
EDUCATION SPECIALIST



Suzanne Goulart
OFFICE MANAGER



Melissa Martin Ellis
NEWSLETTER EDITOR

Colors of Nature



Continued from Page 1

and other animals seeking food. Bright yellow horehound, red winterberry, or purple pokeweed garnish the landscape with appetizing treats. Be warned, not all of those fruits are edible, or palatable to humans. Besides native species, there are many fruiting plants that are invasive species, they have become ecological nuisances. For example, Asiatic bittersweet is a plant with attractive yellow and red berries that grows as a vine. The berries are great food for birds and other animals, but the plant grows faster than native species, has few predators, and leafs out sooner than native plants. The result? A very invasive plant that overtakes young trees and other shrubs. Japanese barberry, multiflora rose, and even privet are also examples of invasive plants that become quite colorful in the fall.

Decomposers such as lichens add subtlety to the colors of nature. Lichens are often overlooked in the spring and summer, concealed by thick foliage and brightly colored flowers. A lichen is an organism composed of two distinct species, a fungus and a kind of algae. Easily confused with moss, lichens are distinguished by their hardened texture and flat earth tones- greens, browns, greys, black, and even white. At specific times of the year they can be quite colorful, some with bright reds and yellows. As leaves fall, these dwellers on rocks, trees and logs are the premier showcase of color, to add complementary shades and variety to the browns and yellows of late autumn and winter. They serve as a reminder that life is a process that continues. Even through the seemingly bleakest of times, they need very little sun-

light to survive, beginnings which spring forth eternally from endings, the classic circle of life.

It intrigues me, that in the end, it is those golden rays of sunlight which are literally the brush strokes that determine the colors of the seasonal palette of Nature. Ah, sunlight on my shoulders.

Introducing Lauren Parmelee

We are delighted to welcome to our staff Lauren Parmelee as the Assistant Director of the Norman Bird Sanctuary for Education.

Lauren is a New England native, but comes to us from drier climes, most recently as the Director of Education for the Randall Davey Audubon Center in Santa Fe, New Mexico. She has a Bachelor's Degree in Biology from Amherst College and a Master of Science in Environmental Studies from Antioch New England's excellent program.

Lauren brings great experience and credentials to her position here. As well as teaching in nature centers, she has extensive background in museum work, that will serve us well as we continue to build our exhibits.

She is a superb birder, with banding experience, and has led many birding trips, including Smithsonian trips in the Southwest.

Lauren is looking forward to re-discovering southern New England's charms, and we are looking forward to the fresh ideas and energy she will bring to the Sanctuary's programs. She will officially begin October 14, but you will have a chance to meet her at the Harvest Fair. Welcome, Lauren!



**NORMAN BIRD SANCTUARY HARVEST FAIR
HOME & GARDEN COMPETITION
OCTOBER 5 -6, 2002**

The spirit of competition: The Home and Garden Competition is open to amateur and professional gardeners, growers, canners, cooks and bakers of all ages.

- ❖ Each entry must be grown, or cooked from scratch, solely by the contestant.
- ❖ Professional growers and bakers must enter their items under the professional categories only.
- ❖ Each contestant may enter a category only once.
- ❖ Entries must be registered at the Home & Garden Booth by 11 a.m. on the day of the judging (except scarecrows, which must be registered by 2:00 p.m. on Sunday), and must be removed between 5 & 5:30 p.m. on Sunday, October 6th.
- ❖ All entries should be labeled discreetly with the contestant's name, address, phone number and competition category.
- ❖ Young grower or baker contestants must be 14 years old or younger.
- ❖ After judging, all food entries will be sold at the Country Store. Proceeds benefit the Sanctuary.
- ❖ Amateur categories will be judged on Saturday at 11:30 a.m.
Professional categories will be judged on Sunday at 11:30 a.m.

PRODUCE

Best Single Fruit
Best Single Vegetable
Best Collection
Biggest Pumpkin
Most Unusual Vegetable/Edible Plant
Young Grower-Best Produce
Jack-o'-lantern Contest (judged on Sunday with Scarecrows)

FLOWERS

Best Single Rose
Best Single Dahlia
Best Fresh Arrangement
Best Dried Arrangement
Best Sunflower
Biggest Sunflower Face
Young Grower-Best Arrangement

SCARECROW CONTEST

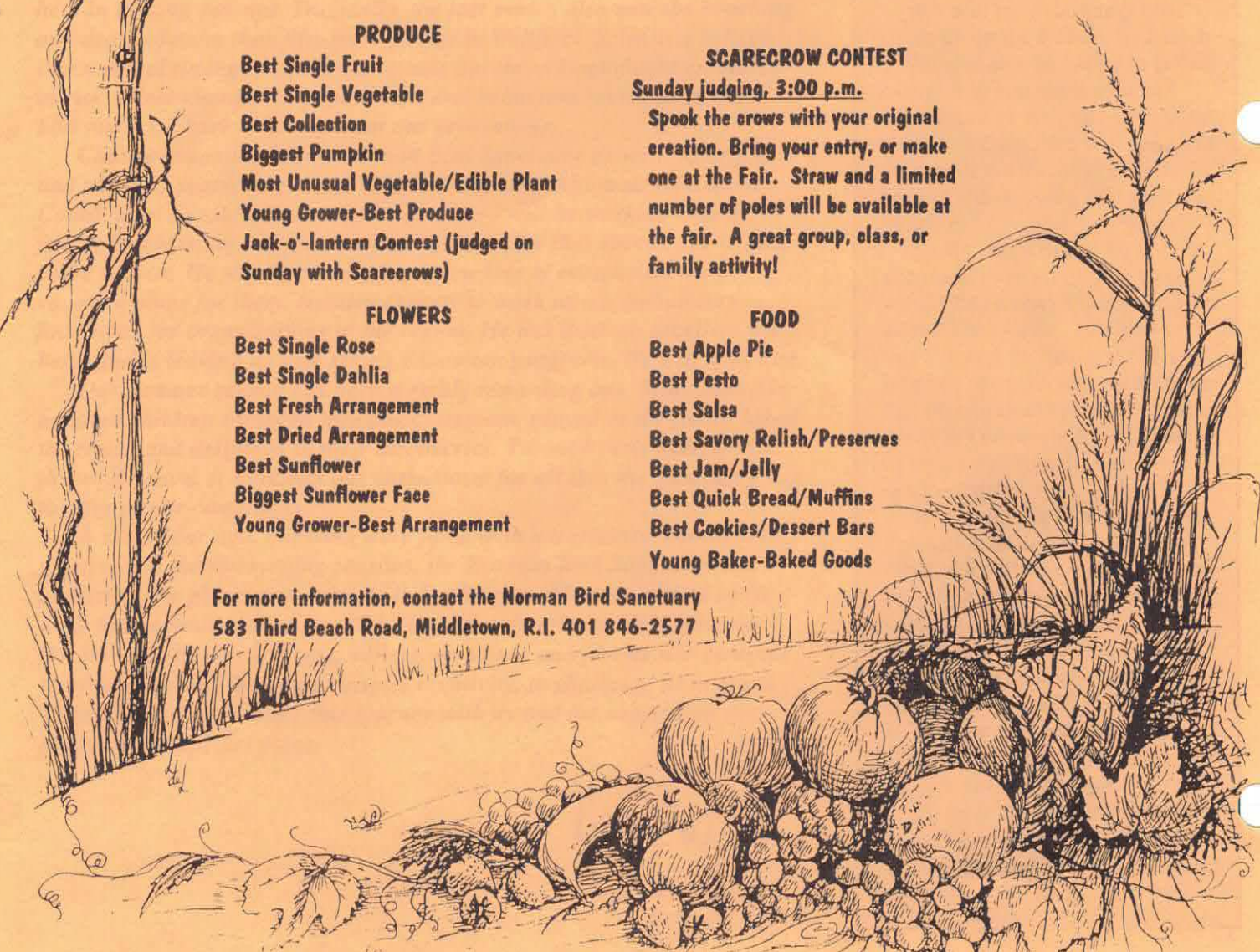
Sunday judging, 3:00 p.m.

Spook the crows with your original creation. Bring your entry, or make one at the Fair. Straw and a limited number of poles will be available at the fair. A great group, class, or family activity!

FOOD

Best Apple Pie
Best Pesto
Best Salsa
Best Savory Relish/Preserves
Best Jam/Jelly
Best Quick Bread/Muffins
Best Cookies/Dessert Bars
Young Baker-Baked Goods

For more information, contact the Norman Bird Sanctuary
583 Third Beach Road, Middletown, R.I. 401 846-2577





Director's Notes

Dear Friends,

After a brutally hot and dry summer, the changes of the season are truly welcome. The days are already shorter, not that the nighthawks and mockingbirds seem to have noticed. The lazy days at the beach and the warm waters and tropical fish brought in by the Gulf Stream's eddies close to shore in late summer don't tell us the whole story. We'll see drier, clearer (and cooler!) air as we move into September. We don't have the brilliant colors of autumn along the shore; instead we will enjoy a more subtle golden glow later this month.

The drought notwithstanding, this summer has seen some thrilling developments. Certainly the most exciting and pleasing has been the successful nesting of piping plovers on Second Beach, the first since 1951. On Martha's Vineyard, Nantucket and Cape Cod as well, these tiny threatened birds seem to have established themselves and flourished. For the third season, we have enjoyed the sight of ospreys fishing the Red Maple Swamp Pond; we hope they will enjoy our hospitality by nesting here in coming seasons. Tragically, the last month also saw the beaching and death of more than fifty pilot whales in Wellfleet. Scientists believe that unusual timing of squid migrations put these magnificent creatures at risk. These changes in populations and behaviors reveal to us daily how much we have to learn about our ecosystems.

Change is coming to the Norman Bird Sanctuary as well. After four and one-half years, Fred Orwiler is leaving his position as Education Coordinator to take on new challenges. Fred will be working with a family business, an on-line vacation booking site that specializes in time share resorts. He will be developing a new line of ecotourism travel vacation plans for them. He also expects to work as a teambuilding facilitator for organizations in the region. He has done an excellent job here, and is leaving us with strong education programs. We will miss him.

Our summer season has been a richly rewarding one. More than five hundred children thronged into our classroom, played in the fields, hiked the trails, and delighted in their discoveries. Through their eyes, we see the world anew. It refreshes our enthusiasm for all that the Sanctuary has to offer to our community.

A short year ago, our lives were filled with uncertainty. Throughout that year, in the intervening seasons, the Norman Bird Sanctuary has nourished the plants and animals living here, and has nourished us as well. In our futures, change will be constant. It will not all be pleasant. But the enduring rock ridges, valleys, meadows and forests will continue to provide us with beauty, to inspire creativity, to challenge us to learn. Thank you for continuing this journey with us and for supporting the future of this special place.

Betsy de Leiris
Executive Director

The Mailman's Blues:

Pleased that we were helping our members with their summer plans by sending out camp brochures the earliest ever, and by providing a window for registration for members only, we were dismayed to learn that some of you did not receive your camp mailing until six weeks later! It was neither snow nor sleet...but something seemed to have kept the camp brochures from their appointed rounds for those of you who live outside of Massachusetts and Rhode Island. We are trying to improve, and ask for your help.

We will have the camp brochure up on the website by March 1. We will also be happy to fax or e-mail it to you upon request. Please call or write us with your e-mail address. We will send out an e-mail notification to members of the opening of camp registration.

Sadly, we will not be able to accommodate all of you who would like to have their children attend our camps. The size of our site and facilities limits the number of children to whom we can offer a quality camp experience. We encourage you to stay in touch and to call, write or e-mail us early.

If you did not pick up a camp evaluation during your summer visits, we will be sending you one. Please be sure to send it back; we value your input and are constantly trying to improve this popular program. In appreciation for your comments, we will send you a coupon for 25% off a day's purchases in the Barn Owl Shop, perfect for holiday shopping.

As ever, thank you for sharing your children with us. It is an honor and privilege to share the world of nature with them.



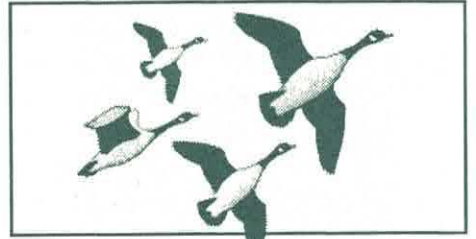
Norman's Activity Page



Hello, again everyone. It's me Norman, with the Fall Edition of the Activity Page. Fall is filled with many mysteries of nature. See if you can unlock some of nature's secrets.

Monarch's undergo an amazing change throughout their life cycle from egg, to _____, to chrysalis, and finally, they turn into a beautiful _____. Do you know what this process is called?

ing them to produce seeds that will survive the winter and grow into new plants next spring. Next time you're out on a hike, visit a field and find a seed:
•That flies on the wind. •Sticks like velcro. •Would be eaten by an animal.




As summer ends and fall begins, the food supply available to animals is being used up quickly as the animals prepare for winter. Many birds have adapted to the decrease in food by flying south in search of new energy supplies. The journey that birds make south is called:

Seed Scavenger Hunt

As temperatures get colder and the amount of sunlight each day decreases, plants begin to die. However, before this they most likely were pollinated by an insect visitor allow-

Why Do Leaves Change Color in the Fall?



Find the  in the newsletter and read the article to learn the truth behind this beautiful mysteries of nature.

Some of the cues or signs that birds use to help them migrate south are pictured below. Can you guess what they are?

Monarch Caterpillar

Start

MILKWEED

Caterpillar ready to become a chrysalis

Finish

Monarch Butterfly



ANSWERS:

Caterpillar, butterfly, metamorphosis, migration, stars, sun, moon.

NOVEMBER 2002



SUNDAY	MONDAY	TUESDAY	WEDNESDAY	THURSDAY	FRIDAY	SATURDAY
					1	2
3 Guided Bird Walk	4	5	6 Preschoolers w/Parents Session B	7 Salt Marsh Restoration	8	9 Plum Island Birding
10 Guided Bird Walk RI Story-telling Festival	11	12	13 Preschoolers w/Parents Session B	14 Metamorphosis Madness	15	16
17 Guided Bird Walk	18	19	20	21	22	23
24 Guided Bird Walk	25	26	27	28 CLOSED THANKSGIVING DAY	29	30 CHANNUKA

DECEMBER 2002

SUNDAY	MONDAY	TUESDAY	WEDNESDAY	THURSDAY	FRIDAY	SATURDAY
1	2	3	4	5 What's Up Down There?	6	7 Holly Days
8 Guided Bird Walk	9	10	11	12 An Evening with Red Tail	13	14 Beginners Birding Christmas Bird Count
15 Guided Bird Walk	16	17	18	19	20	21
22 Guided Bird Walk	23	24	25 CLOSED CHRISTMAS DAY	26	27	28
29 Guided Bird Walk	30	31 NEW YEAR'S EVE				



Educational Programs

Dedication of the Classroom Mural, Farewell to Fred

Sunday, September 15, 4:30 PM
Members & Campers \$2 for supper
Others \$4 " "

Our summer campers worked with ceramic artist Mika Seeger during "Nature and the Arts" week, and created a mural view of the wonders they found in the natural world. Our thanks to Rhode Island State Council for the Arts for their support of this project. Mika will be installing the mural in the classroom from 10:00 am to 4:00 PM. At 4:30, we will gather in the classroom for the dedication of the mural. Join us afterwards for hot dogs and s'mores, and say good-bye to Fred Orwiler, who is leaving NBS this month.
Maximum 50

Nature Guide and Trail Ranger Training

Wednesday, September 18, 6:00-9:00 PM

Become an ambassador for the environment as a trail ranger or nature guide at the NBS. Nature Guides will assist our educators with school field trips, scout groups and birthday parties. Trail rangers hike the trails weekends, answering questions, helping tired hikers and doing small trail maintenance tasks. Be a part of sharing this special place with others.

Bring a bag supper for this initial training session. We'll supply the drinks and dessert. A refresher for current trail rangers and nature guides.
Maximum 20

Mushroom Walk

Friday, September 20, 3-5 PM
\$6 Members \$8 Non-members
Family Program

Dr. Roger Goos, URI Mycologist (that's a mushroom expert!) will once again lead this popular fall walk, and share his extensive and entertaining knowledge of mushrooms. We will hike the Sanctuary's trails, learn to identify local mushrooms, and examine the important role mushrooms play in our ecosystem. Sign up early!
Maximum 20

Coastal Cleanup

Saturday, September 21, 10-12 AM

Meet at the Third Beach Ramp for Bagit!2002. The theme of this year's cleanup

is "A Healthy Sea". Be a part of this international day cleaning our coastline. We will be collecting and tallying all the trash and litter we pick up on Third Beach. After a good morning's work, we'll gather for ice cream and fellowship.

Preschoolers with Parents

Wednesdays

Session A Sept. 25, Oct. 2, 9, 16

Session B Oct. 23, 30, Nov. 6, 13

Ages 3 - 5 years

1:00-2:00 PM

\$30 Members \$35 Non-members

Explore nature with short walks, simple nature crafts, stories, songs and lots of joy and silliness. Parents are guaranteed to have fun too. These are one hour programs once a week for four weeks. Please dress for the weather too. Choose your Session(s) from dates provided. **Maximum 10.**

Discover the Sanctuary Day

Saturday, September 28, 9 AM - 5 PM

Come try on membership for a day! Join us for a guided walk at 11:00 AM and 1:00 PM. Enjoy a 10% discount on purchases in the Barn Owl Shop, and delight in September's clear air on the trails.



Fall Family Campout

September 28-29, 4:30 PM-9:30 AM

Adult \$16 Members \$19 Non-members
Child \$13 " \$16 " "

We'll gather at 4:30 and pitch our tents (Don't have one? We have a few for rent.) Supper cooked over the fire will follow. We'll tell stories and songs by the fire before bed, then snuggle into our sleeping bags for a cozy night. After an early breakfast, join our Sunday morning birdwalk. Bring warm clothes!
Maximum 14

Westport Paddle

Sunday, September 29, 9-4

\$60 Members \$70 Non-members

We'll travel by Bird Van to the Head of the Westport River, where we'll meet the naturalist for the Westport River Watershed Alliance. After you're fitted out with your kayak and have a short lesson, we'll head down the Westport River, and enjoy the ospreys, marshes, farm fields, fall foliage, and more. Bring water

and a bag lunch; we'll supply snacks. Dress for the weather!

Maximum 9

Autumn Night Hikes with the Newport Children's Theatre

October 18, 19, 25, 26 7:00-8:30 PM

\$6 Members \$8 Non-members

One parent free in each family

Family program

The Sanctuary staff and talented actors of the Newport Children's Theater will once again take you on a magical night hike. You'll meet nature's denizens of the night and learn nature's lore. Dress warmly. If you bring a flashlight, please cover it with a red filter. Join us afterwards for cider and cookies.

Greenworks! Opportunities in Environmental Service Learning

Teacher's Workshop

Saturday, October 19, 8:00 AM - 1:00 PM
\$25

Join Caroline Alston of Project Learning Tree for an exciting morning looking at service learning opportunities in the natural sciences. This program is approved by the RI Department of Education for five credit hours for professional development. Combine environmental lessons with community initiatives to let your students have a real impact on the future of their communities. You will receive a Greenworks! Booklet with great teacher resources and ideas!

Continental breakfast and snacks, camaraderie, stimulating training- follow it all with a hike on our trails. All participants will receive a coupon for a 10% discount on the cost of a field trip, or in-class program for your students. Register before Sept.30 and receive a \$5 discount.

Maximum 40

RI Environmental Education Alliance Conference: "Harvesting Environmental Education: The Nature of Inquiry"

Saturday, October 26 8:30-3:00, Audubon Environmental Education Center, Hope St. Bristol, RI
\$35 Students \$25

Always an exciting day, and a great opportunity

Please Note: Preregistration is required for programs.



Educational Programs

nity for teachers, youth leaders or parents looking for ways to share nature with young learners. Workshops include in-depth natural history background on diverse habitats, and lessons that can be immediately put to use with students. And a nice way to see the Audubon's Environmental Education Center. Call Robbie Fearn at Roger Williams Park Zoo, 401-785-3510, ext. 357, for registration information.

Maximum 35

Salt Marsh Restoration at the Galilee Refuge

Thursday, November 7, 7:30 PM

Members free
\$2 Non-members
Adult program

Dr. Francis Golet of the University of Rhode Island will talk about the issues, problems and solutions in restoring this important wildlife habitat. Join us in the Studio for the first of our fireside winter lecture series. This is a preview of what we hope to accomplish here in a marsh restoration project. Hear about our plans after Dr. Golet's talk.

Maximum 35

Plum Island Birding

Saturday, November 9, 7:30 AM - 4:00 PM

\$25 Members \$30 Non-members
Adult program

Join expert birder Jay Manning in the Bird Van for a trip to one of Massachusetts' premier birding spots. The Parker River National Wildlife Refuge in Newburyport is home to more than 800 species of birds, plants and animals. Please dress for the weather (warmly) and bring a bag lunch. We'll supply snacks and drinks. Leave the driving to us!

Maximum 12

Rhode Island Storytelling Festival

Sunday, November 10 2:00 PM

Individuals \$5 Families \$15
NBS Members receive \$1 discount

Once again this year, the Rhode Island Storytelling Festival will conclude with a day of stories on nature themes at the Norman Bird Sanctuary. Storytellers will be spinning their magic in the Studio and the Classroom. Guaranteed to enthrall all ages! For more information, call Cindy at 847-5148.

Metamorphosis Madness

Thursday, November 14, 6:30 PM

Members free \$2 Non-members
Family program

Come meet Norman, the Rhode Island Red Rooster. Norman and his friends will delight you with their zany explanations of insect metamorphosis in this puppet show. Bring a bag supper; we'll have cookies and juice (and coffee for the grown-ups). This is a new offering in our school program catalog. Teachers are cordially invited to attend without charge for a preview.

Maximum 50

What's Up Down There?

Thursday, December 5, 7:30 PM

Members Free \$2 Non-members
Family program

Steve Parente, fisherman and raconteur, will take you on a whirlwind tour of what's happening in the waters of the Sakonnet River and Rhode Island Sound as we get closer to winter. Gather by the fire in the Studio to hear about the secrets of the sea.

Holly Days

Saturday, December 7, 12:00 to 7:00 PM

Adult \$5 Child \$3



Celebrate the holiday season with a day of natural fun at the Sanctuary. Crafts for young and old, a hunt for the enchanted tree, storytelling by a cozy fire, and a festive tree-lighting. As evening falls, a night hike, perhaps a glimpse of an owl, the roasting of marshmallows, and a blazing bonfire.

An Evening With Red Tail

Thursday, December 12, 6:30 PM

Members free \$2 Non-members.
Family Event

In the second of our winter family series, join us in the classroom for a visit with our red-tailed hawk. Learn about what makes raptors so fascinating. Bring your bag supper, and join us after the program for cider, hot chocolate and cookies.

Christmas Bird Count

Saturday, December 14

Members Free Non-members \$2

Throughout the northern hemisphere, birders

are out this week counting species. This is a valuable tool to monitor what's happening with bird populations, and a good indicator for trends in populations. Be a part of the excitement. We'll start in the pre-dawn hours seeking the elusive owls, and continue on the Sanctuary, at Gardiner's Pond, on Third Beach, and up Indian Avenue. Call the Sanctuary for rendezvous times.

Not sure of your birding skills? Come to a **Beginner's Bird Count at 9:30**. We'll do a short program on bird identification, and head out on the Sanctuary's trails.

Owl Prowls

Adults Only

Thursday, January 16 6:00 - 7:30 PM

Thursday, January 30 6:00 - 7:30 PM

Family

Friday, January 17 6:00 - 7:30 PM

Friday, January 31, 6:00 - 7:30 PM

Members \$6 Non-Members \$8

In these shortest days of the year, owls are planning for the future, occupying their nests, and laying this year's clutch of eggs. They are claiming their territory with hoots, screeches and warbles. We'll be looking and listening for Eastern Screech Owls and Great Horned Owls, and perhaps a surprise or two. We'll talk about the habits and habitats of these fascinating creatures, while we enjoy cider and hot chocolate after the walk. **Maximum 35**

For The Birds

Sundays at 8:00 AM

The weather may be getting colder, but the woods, marshes and meadows are still full of life. Join us in the Sanctuary Parking Lot at 8:00 AM to head out with the Sunday morning birdwalk, a Sanctuary tradition. All birders welcome, including beginners. Dress warmly, bring binoculars if you have them or borrow a pair of ours. Observe our winter residents, and the occasional visitor from the far north. Every Sunday until Christmas; check the winter newsletter for the schedule after the holidays.

Harvest Fair

Saturday and Sunday, October 5 & 6

10:00 AM - 5:00 PM

Adults \$5 Children \$2

Celebrate the season with our 28th Annual Harvest Fair. Field games, crafts, pony rides, rock-climbing, and musical entertainment. A whole lot of fun for every member of the family, and a great way to support the educational initiatives of the Norman Bird Sanctuary. See you there!

SEPTEMBER 2002



SUNDAY	MONDAY	TUESDAY	WEDNESDAY	THURSDAY	FRIDAY	SATURDAY
Guided Bird Walk 1	2 <i>Labor Day</i>	3	4	5	6	7
Guided Bird Walk 8	9	10	11	12	13	14
Guided Bird Walk 15 Goodbye, Fred Mural Dedication	16 <i>Yom Kippur</i>	17	18 Trail Ranger & Nature Guide Training	19	20 Mushroom Walk	21 Coastal Cleanup
Guided Bird Walk 22	23	24 <i>Autumn Begins</i>	25 Preschoolers w/Parents Session A	26	27	28 Fall Family Camp Out Discover the Sanctuary Day
Guided Bird Walk 29 Westport Paddle	30					

OCTOBER 2002

SUNDAY	MONDAY	TUESDAY	WEDNESDAY	THURSDAY	FRIDAY	SATURDAY
		1	2 Preschoolers w/Parents Session A	3	4	5 Harvest Fair
Guided Bird Walk 6 Harvest Fair	7	8	9 Preschoolers w/Parents Session A	10	11	12
Guided Bird Walk 13	14 COLUMBUS DAY	15	16 Preschoolers w/Parents Session A	17	18 Autumn Night Hikes w/RI Children s Theatre	19 Teacher s Workshop Greenworks! →
Guided Bird Walk 20	21	22	23 Preschoolers w/Parents Session B	24	25 Autumn Night Hikes w/RI Children s Theatre	26 RI Environ. Education Conference →
Guided Bird Walk 27 Daylight Savings Time Ends	28	29	30 Preschoolers w/Parents Session B	31 HALLOWEEN		



Hope Wildlife Rehabilitation Laboratory

June 11th, 2002 marked the Norman Bird Sanctuary's official opening of the Hope Wildlife Rehabilitation Laboratory.

Wildlife rehabilitation is defined as the process of restoring a wild animal to its natural habitat after a prolonged stay in captivity. The process begins when the animal is first introduced into captivity, due to being injured or orphaned, and ends when it is reintegrated with the natural environment.

The success of rehabilitation, from the biological perspective, is measured by the animal's chance of establishing itself in a natural population and reproducing. Each year the need for rehabilitative wildlife care increases. As our island becomes more populous, human activities increasingly conflict with those of wildlife.

Young opossums, raccoons, and skunks are orphaned in roadway accidents; great blue herons are entangled in monofilament along our waters; rabbit nests are rescued from mowing mishaps; raptors collide with power lines and are hit by vehicles while hunting. An even greater number of orphaned squirrels and nesting birds are brought to our rehabilitation center. Because awareness of wildlife and the environment is increasing, concerned citizens feel a need to rescue animals perceived to be in peril.

Wildlife rehabilitators, out of respect for this concern, have the job of acting as liaisons between the public and wildlife. While human acts often lead to situations in which animals are orphaned or injured, likewise human intervention, in the form of rehabilitative care, at-

tempts to restore the balance.

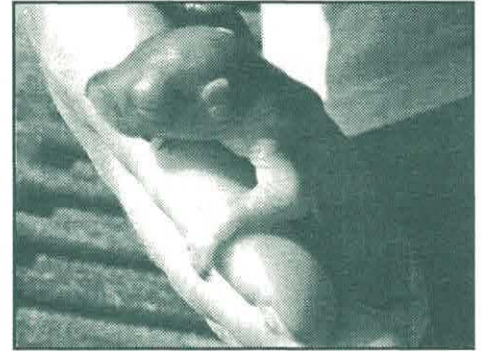
When people rescue an injured or orphaned bird or mammal and bring it in to the Sanctuary, we use the opportunity to open the door to wildlife education. For many people, these brief encounters may be their first experience with wildlife and the beginning of their understanding of ecological concerns.

Wildlife rehabilitation programs are able to educate about and increase awareness of, the need to conserve and preserve all wildlife species and their dwindling habitats.

In the past 25 years, wildlife rehabilitation here at NBS has undergone a metamorphosis. In those early days we accepted all orphaned or injured birds and mammals, and attempted to save all species with the limited knowledge and experience that was available.

Today, we realize that heroically trying to save every animal that comes through the door is unrealistic. Even with today's state-of-the-art knowledge of and experience with wildlife, rescue and rehabilitation attempts often prove unsuccessful.

The Sanctuary, along with most rehabilitation centers, has limited budgets, facilities, access to release sites, and manpower. The current school of thought is to do what is most humane for wild animals in the long run. This means being selective when choosing which ones to save and which ones to euthanize. Many centers specialize in particular types of animals. The Sanctuary will spend the next year looking at what type of rehabilitation facility would most benefit wildlife, not only on Aquidneck Island, but also the entire state of Rhode Island. If you are interested in learning more about wildlife rehabilitation, or how you could support the Hope Wildlife Rehabilitation Laboratory, please contact the Norman Bird Sanctuary at 846-2577.



William Saslow photo



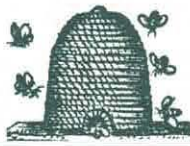
William Saslow photo



Melissa Ellis photo



Melissa Ellis photo



Volunteers & Events

Summer Entertainment Sizzled, Thanks to Del's Lemonade

The Sanctuary's 3rd Annual Summer Entertainment Series was a great success, enjoyed by folks of all ages. Blessed with great weather, audiences relaxed on the Paradise



Farm lawn and listened to the ever-popular Navy Band Northeast's Showband on August 11th. Performing a variety of American musical styles including Swing, Blues, Big Band Jazz and other family favorites, this premier military band had us tapping our toes and singing along.

Trinity Rep's highly acclaimed Summer Shakespeare Project, now in its fifth year, performed Shakespeare's *The Tempest*, here at the Sanctuary on August 18th. We loved this magical tale! Thanks to all who joined us for the Navy Band and theatrical journey with Trinity.

A huge thank you to Bruce Long, owner of Middletown's Del's Lemonade, for once again sponsoring our summer entertainment, allowing the public to enjoy the Sanctuary free of charge.

How Can I Help?

Your gifts today to the Norman Bird Sanctuary help support our programs. Your gifts in the future will ensure that the Sanctuary continues to thrive for future generations. Have you considered a planned gift to benefit the Sanctuary in the years to come? Please call your financial adviser or legal counsel to explore the many ways your passion for preservation can long endure. Recent tax laws have resulted in lower estate and gift taxes for many Americans, resulting in more assets being freed for use as charitable gifts. There are ways in which you can plan for future gifts, while at the same time enjoying immediate income tax savings today. Please call if you would like us to introduce you to some professional advisors to ensure you have met all of your charitable goals for 2002 and beyond!

Naturally Artistic

Norman Bird Sanctuary has long been an inspiration to artists, and some of America's best known have left us their image of this unique place. With the help of the Rhode Island State Council for the Arts, tomorrow's artists created their vision here this summer during "Nature and the Arts" week at

camp. Working with well-known ceramic artist Mika Seeger, campers created a magical mural. We will be installing and dedicating the mural on September 15 (see the program notes). Join us that afternoon at 4:30 to see this imaginative piece of work. Later that afternoon, you'll have an opportunity to wish Fred well in his new endeavors.

The Legacy Tree

The time is now! The Norman Bird Sanctuary must raise \$1 million to renovate its historic farm buildings. Please join with your neighbors and support this vital project for tomorrow's stewards of the earth.



You can honor your child or grandchild with a leaf on the Norman Legacy Tree in the Environmental Education Center with your gift of \$100 or more - a perfect way to celebrate this special corner of Aquidneck Island and someone you love! Your child's name will be permanently displayed on a decorative oak leaf adorning the Norman Legacy Tree that will 'grow' in the Environmental Education Center. Please contact the Sanctuary today to find out how you can help us to preserve Mabel Norman Cerio's legacy, and create a vibrant Environmental Learning Center for nature lovers of all ages and abilities. Call 846-2577.

Thanks, Jasmine

Jasmine Questal-Gee returns to Newport each summer to visit her grandmother and spends part of her summer at the Norman Bird Sanctuary Camp. Jasmine, once again this summer, has raised money to support our initiatives in animal care. A lover of animals large and small, she has found a way to take action to further her passion.



Fred Orwiler photo

Our summer staff, including the extraordinary teen volunteer assistant teacher naturalists on whom we depend.



Volunteers & Events

Join in the Fun of the Harvest Fair - Volunteer!

The 28th Annual Harvest Fair will be held on Saturday, October 5th and Sunday, October 6th from 10:00AM – 5:00PM. This old-fashioned celebration of fall has become a local tradition and each year's success is due to the many wonderful volunteers that donate their time to this event.

We are looking for volunteers to help with such varied areas of the Fair as: ticket taking, adult and children's games, manning the wildly popular mud pit and greased pole events, handing out prizes, selling food and drinks, baking, produce-judging, parking, clean up, etc. **NO EXPERIENCE IS NECESSARY!** We have a committee of talented organizers to help get you started.

As a Harvest Fair volunteer, you will receive free entry to the Fair. This is a great opportunity to become part of a team of individuals that love their community and the Norman Bird Sanctuary. We could truly use your help, whether it is for two or more hours, on either day. To volunteer, or for more information, please call us at the Sanctuary at 846-2577, or email loric@normanbirdsantuary.org.

What's Cookin' This Fall?

As the weather cools and we can once again brave using our ovens, the Sanctuary would love to have donations of baked goods for sale at the Country Store during our Harvest Fair, October 5th & 6th. Or, enter your best recipe into our Home & Garden competition (see the flier insert). Please contact the Sanctuary if you can help.



Suzanne Goulart photo

A special thanks to Nate Lindgren of Jamestown. As his Eagle Scout project, Nate built a bench for the trails and a magnificent flagpole. Both are in honor of Walt Kosinski, Norman Bird Sanctuary Board member and stalwart trail volunteer, who passed away in 2001. Nate was joined at the dedication ceremony on August 22 by the Kosinski family, as the United States and Rhode Island flags and the Norman Bird Sanctuary banner flew proudly in the afternoon breeze.

Remember Us When Making Donations

The United Way of South Eastern New England begins its fund raising efforts in September. Please consider making a donation to the Norman Bird Sanctuary by choosing our Donor Designation Number 6286.

Special Member Coupon

NORMAN BIRD SANCTUARY



\$1.⁰⁰ OFF ADMISSION

Saturday & Sunday October 5th & 6th

10:00AM - 5:00PM • Rain or Shine

\$5 Adults • \$2 Child 3-12 years • Free under 3

**CRAFTS • HAY & PONY RIDES • LIVE MUSIC • FESTIVE FOODS
CHILDREN'S GAMES & STORY TELLING
HOME & GARDEN CONTESTS • LIVE ANIMALS • ROCK WALL**

Norman Bird Sanctuary, 583 Third Beach Rd., Middletown, R.I. 02842
(401) 846-2577

Norman Bird Sanctuary
583 Third Beach Road
Middletown, RI 02842

Non-Profit Organization
U.S. POSTAGE PAID
Newport, RI 02840
Permit No. 43

TO CURRENT RESIDENT OR:

***NOTE:** Your feedback is most welcome, please share your thoughts about the Pull-out Calendar, the Newsletter, scheduled events and programs...in short, anything to do with making the Sanctuary a better place. Please see below for our address, phone number and website information.*

Become A Member Today

Members enjoy free access to the trails, 10% discount in our store, a subscription to our newsletter and discounts on our programs.

- Student \$15 Individual \$25 Family \$40 Contributing \$50
 Sustaining \$80 Institution \$125 Patron \$125
 Supporting \$250 Benefactor \$500 Angel \$1000
 Check Visa/Mastercard # _____

Signature _____ Expiration Date _____

Name _____

Address _____

Phone _____ Email _____

Please check the membership category of your choice and mail with a check or credit card information to:

The Norman Bird Sanctuary, 583 Third Beach Rd., Middletown, RI 02842

www.normanbirdsanctuary.org • (401) 846.2577