



THE SAMOYED QUARTERLY

Summer 1986 • \$8

[Handwritten signature]

Samoyed People

The Samoyed Quarterly
Talks With
Dr. Maurice Waller
SUNNY STAR
Germantown, Tennessee

This interview was conducted in July, 1985, at the office of Dr. Waller by Brenda E. Abbott.

How did you get started in dogs, or Samoyeds, if they were first?

They were not first. When I came out of the service in 1945 we had a Chow, and then when we moved to the lake we got Boxers for our kids. The Boxers became vicious and so we read every book we could find to see what would be a good kid's dog. In every book we looked into, the Sammy kept turning up as the ideal family dog. At that time there was a young couple stationed at Millington Naval Base from Canada and they ran a picture in the paper of a basket full of Sammy puppies ... and that's how we got our first Sammy puppy.

Who was your first dog?

The dog was named "Shaboon" after the popular dance band song out at the time. This girl liked the song and had already named the puppy "Shaboon." I don't recall the breeding since it has been so long, but it was Canadian. She had papers and pedigrees with her although she wasn't too sure of them herself, but all of it was Canadian.

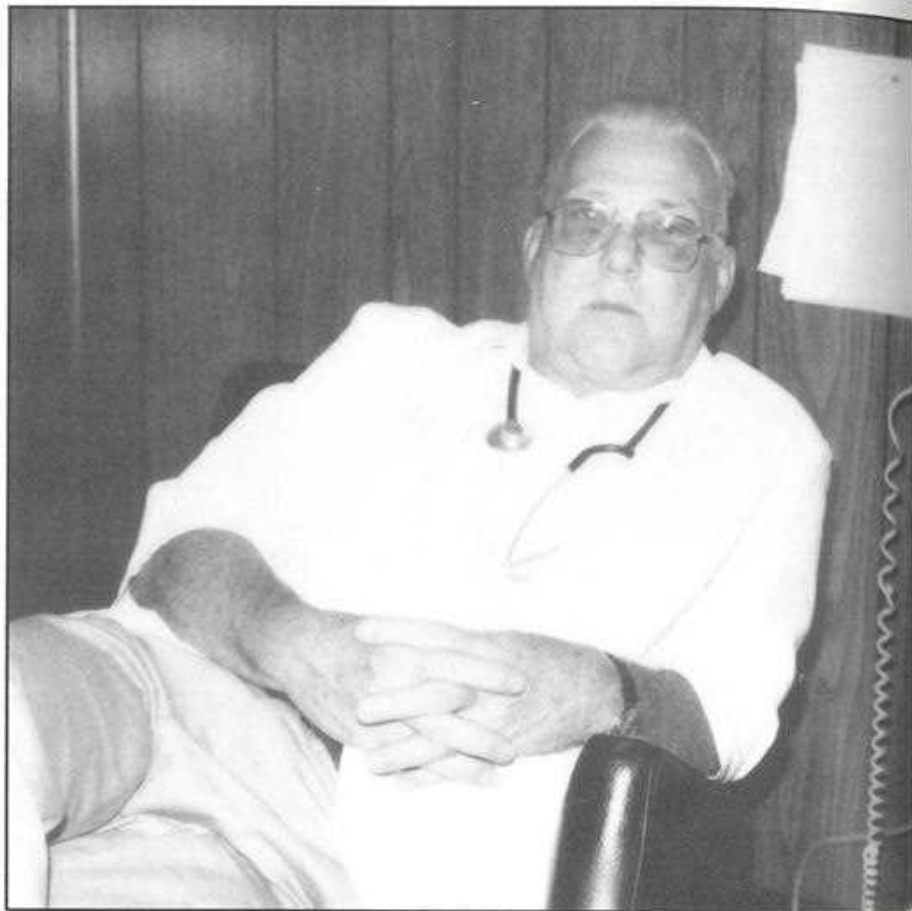
Did you breed from this dog?

No, we didn't. He died of old age and was strictly a pet the entire time.

Where did you go from there?

After he began to get age on him and the children began to get older, we started looking for a better dog because we wanted to show. We had been going to shows to see Sams for several years, but there would always be only one present. You would see Kathryn Tagliaferri with Silver Duke of the Rockies, her one dog at that time, and that would be it.

We chased down a bitch, bought her, took her off of the plane, out of the crate, ran her around, put her back in the crate and shipped her back. She was a very poor specimen. After that we got in touch with Mrs. Morony who had the Marylake Kennels in the 1950's in Texas on the Mexican border, and we



bought our first show dog from her. We showed this bitch, finished her rather rapidly and had the good fortune to pick up a three-point major the first time out. Her name was Ch. Princess Shi-mar of Marylake. After this, we showed her and kept the two dogs for quite awhile. Finally, when the older dog was killed we started looking for another one and I called Mrs. Perry at Kobe Kennels in England. She had some hearing problems at the time and I really ended up talking to her daughter, Irene Ashfield. I had read about a dog that I thought I wanted, Ch. Imperial Rebel of Kobe, but the dog had been sold to Australia. One of the judges from Australia had been there and bought it. She told me the dog was a bit small for this country anyway, but she had another pup which was out of her Sunny Star of Kobe and she shipped this dog to us. We got him, watched him for a couple of days and then wired her a dozen roses and asked her to send us a bitch to go with him! (laughter) She did, and that was our two original breeding

pups.

What was the bitch's name?

Astra of Kobe. The dog was Tanstar of Kobe. Then, and now, we have never had a large breeding program. We never bred and sold but maybe three or four dogs. We only bred when we wanted one for ourselves. We kept the one we wanted and gave most of the others to friends. Very little showing ever occurred with them; they were mainly raised for homes and given to friends rather than sold on the market.

Did you import any other dogs?

Not in Samoyeds. We bred a total of three Samoyed litters. We finished two of them and those were the only ones that were shown; all the rest were in pet homes. When we sell a dog or give a dog away, our policy is that when it leaves the driveway, it does not belong to us. Some people have so many strings attached and so many contracts that dogs become a real business rather than a pleasure, so we

decided not to get into this. Fortunately, or unfortunately for us, the people who did get our dogs just loved them in their homes and didn't care about showing. All of these dogs lived to a ripe old age and were well cared for, and that's all we cared about. Our dogs were shown very little other than the ones we showed ourselves.

Did you ever go over to England and see the dogs that were behind your dogs?

No. Americ of Kobe, which was certainly one of the greatest ones to ever come into this country brought over by Mrs. Ashdown, was the dog I really admired. All of the reading and pictures of him at that time was what led me back to the Kobe Kennels.

Which was your best litter of the three that you bred, and were all three of these litters a combination of the foundation dog and bitch that you imported?

No, the three litters were all sired by this dog and the original bitch that we had gotten from Marylake Kennels. Unfortunately, we didn't breed the English bitch. Yavonne DeCarlo in Virginia told me at the time that she didn't care what else I did, I should breed the bitch before something could happen. I said we wanted to wait until she was at least two or three years old before breeding her because we weren't in the puppy business and we wouldn't need one for ourselves until then. She told me a sad story of having this happen to her, and unfortunately I didn't listen to her. Our dog was hit by a car and killed and so the bitch was never bred. I did show her and she was a great show dog. Mrs. Moore in Benton, Arkansas kept her for a long time and she died at Mrs. Moore's. She was not bred simply because we were going to wait until we wanted one from that breeding and that was one time I should have listened to good advice.

Which of your dogs do you feel was the best?

There is no question that Tanstar was. He was everything I expected out of a Sammy. He was about like Americ to me and that was what I always pictured as the "top" Sammy, as far as I was concerned. I still look for that same thing; it became sort of a by-word at that time because people called it a "Kobe head." This head had more of the blunt nose, in contrast to some of the more pointed noses we see now. He had the

proper size, stance, and ruff. Some of the dogs today have gotten to be pretty good-sized, but the Sammy is really not that big of a dog.

I realize your admiration of Americ of Kobe was a big influence on your ideas about the breed. Besides him, did any one person have an influence on you?

At the time that I was showing there was almost no one in Sammies in our area. The people that I had contact with at that time included Kathryn Tagliaferri who was showing Silver Duke and Maylene, who was the number one bitch that Renee Roux showed for so long. In Prattville, Alabama, Mrs. Ingram, who had a rather large kennel (Snowdrift) and bred and sold widely in this area. When they formed the Dixie, or southern Samoyed group back years ago, I was president one year and I had contact with Mrs. Davidson in the Dallas area. There were some people in Cincinnati named Orman, he played with one of the symphony orchestras, and they had Sammies at that time. Later Dr. Hodges moved here and his wife had a Sammy that she had gotten in Idaho. Donna

Yocum, who lived in Colorado at that time, had a son stationed here at Millington Naval Base, he was out at the house and brought a film of their dogs pulling sleds, etc. Most of the people in this area came into the breed after I did. We were all scattered so far apart that there wasn't much contact. I relied on the English and the New Zealand books; I felt the New Zealand book in particular was good for the information one needed.

What year did all of this start?

I started in the early 1950's and the dog from England was imported in 1964. The dog I bought from Marylake Kennels down on the Mexican border was in the late fifties.

Did you do any showing of these dogs beyond their championships?

No, never.

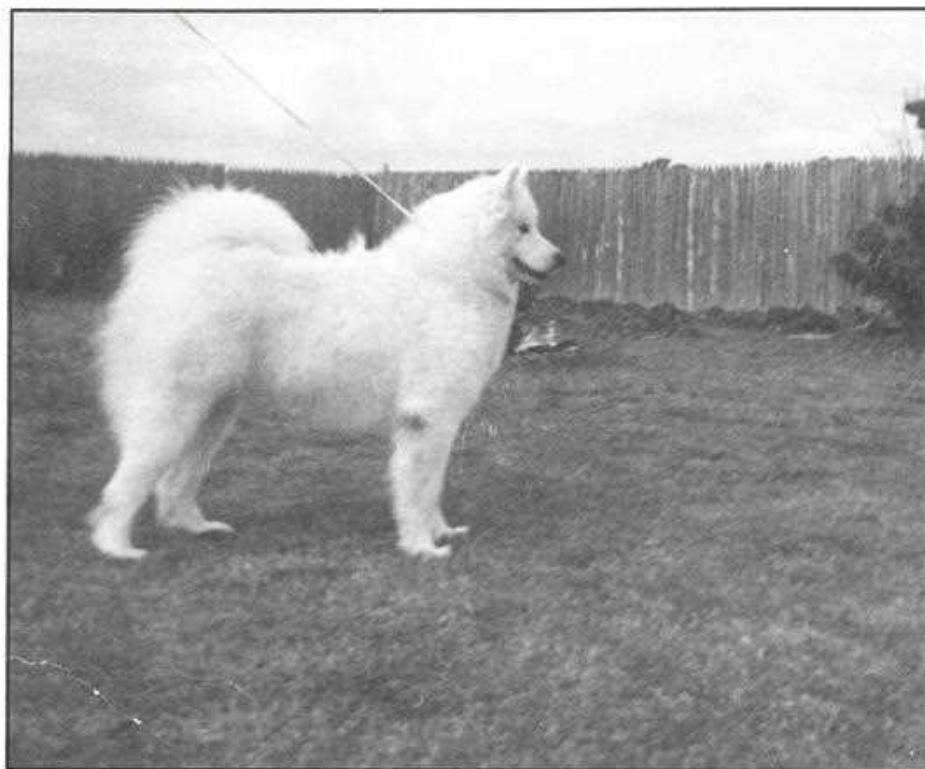
Did you handle your own dogs?

I showed mine about 50/50. In the Memphis area at that time you would see one or maybe two Sammies and that was it. Today our entries in Sams run around 15 or 20 at shows from Little



was
we
eding
d but
bred
We
most
little
they
given
the

other
total
shed
only
were
og or
when
not
e so
many
real
o we



Astra of Kobe.

Rock to Birmingham and Nashville. It has definitely improved in numbers, but at that time Renee Roux, a handler out of New Orleans, showed the dogs for me. He was also the handler for Kathryn Tagliaferri at that time. Linda, my daughter, and Nancy, who worked for me at that time, frequently made trips within 300 miles of Memphis and on those trips Linda would show the dogs.

How active was your daughter with the dogs?

Linda was very active. She loved all the dogs and when they would get to the hotel all the dogs would pile on the bed and sleep with her! She put a Miniature Dachshund through obedience school. She put some of the Sammies through the same thing at home.

Did you or she put any obedience titles on your Sams?

No.

How did you go about training your dogs for the show ring?

We started all of ours at home with a loose string lead around their necks and let them drag it. After a short period of time we would go with them on the lead and then they gradually began to understand that they were to stay with us on the lead. We usually started them quite young in this manner. They would usually be about six months old before

we did any further training and we had a set rule that we would not go beyond five or ten minutes at the maximum because their attention span is not too long at this age. Once we got them to where they would show, we never had any problems; I've always found that Sammies are an easy breed to show.

At what age did you evaluate your puppies for quality?

I like to see them at eight, twelve and sixteen weeks. Of course, we have had other breeds; my daughter had Afghans and I had Giant Schnauzers. Strangely enough, we've had three litters of Sammies, three litters of Afghans, and three litters of Giants, but scattered over many years and bred only when we wanted a new dog. Of all the litters (and I've whelped a couple of litters for a friend of mine who sent his dog down for that purpose) it is kind of uncanny, but on Day One to sixteen weeks and all intervals in between, rarely do you change your mind. We could almost pick from the first day because they seemed to stay pretty constant. Fortunately, all of our litters were small, four seemed to be a magic number, and they all tended to look alike. When puppies in a litter all tend to look alike, we consider that a very good sign. If you have four puppies and they all look different, you're in a heap of

trouble! I only changed my mind on one pup that I can remember. Our pups were whelped in the house, right by the bed, and stayed there for several weeks so that we did see them closely every day. With a small litter like that you don't have to go to all the colored collars and markings like you do with a larger litter.

Did you assist your bitches while they were whelping?

I was there. Nature has a beautiful mechanism for pregnancy and we used to say in med school that the only reason to take the Ob/Gyn residency was to screw up nature's procedures! I never did anything unless there was trouble and this was a rare occasion. We were just there and had to do very little.

Do you believe in supplementing puppies if the mother can't take care of them? Would you tube feed?

I am a very peculiar person when it comes to this. I believe that for any animal that is deformed, nature had a good mechanism for destroying it. The mother, if you will notice in the litters where there is a pup in trouble, will frequently nose that puppy out and the puppy will get cold and die. If there are problems and the mother is going to ignore that dog, I don't make any big issue of it. Skillful neglect is important in any breed; to save 14 puppies out of a litter is not always a star in your crown as far as I'm concerned. The Giant Schnauzer people (which is the breed that I now have) only keep so many out of the litter anyway in Germany and they put the rest of them to sleep. I think that the mother should not be overloaded; if she has 14 puppies it is foolish to try to save one that is just hanging by a thread. I don't do it, although being a doctor I'm perfectly capable of putting tubes in them or anything else, and I have done it for friends, but we never kept a dying puppy alive. We didn't have this type of thing in the Sammy anyway, but we did have it with the Afghans and the Giants and we never tried to save a puppy that was in serious trouble.

What would you do if the mother somehow became unable to care for the litter?

We never had that problem, but if it had happened we would have gone to milk and pabulum. We did this with an Afghan that developed a little mastitis problem and we used a bottle and a

nipple. Any good puppy can nurse, but the one that you have to tube feed is a whole different ball game. I've never tube fed any of them because I just don't care to do it. The ones we put on the bottle could suck that bottle just like a kid would, and there was no problem with that.

How did you go about weaning your puppies?

We had the mother take care of it with her "built-in" mechanism. Our mothers never had any trouble weaning their puppies when they were ready.

Did you start them on any puppy food at a young age?

If they were a bit empty and cried, we did everything that everyone told us. There are 15,000 formulas, there are 15,000 cakes and goodies to bake for them. The original one that we got was hamburger meat mixed with rice and egg yolks, butter and honey. You bake this like a meatloaf and it was crumbly and you fed it to the puppies. It smelled great (laughter) and I'm sure it tasted great; they loved it! We have been through this and everyone you talk to has his favorite "dish," but after all these years we found out that the empty stomach can be filled with just plain scrapped meat. Let the pup lick it off your finger; it will fill the stomach and stay longer because it is much more filling. A veterinarian friend of mine told us about that, and since then we've stayed away from all this cooking and all this work. We always fed our puppies cottage cheese, however, and we bought it in five-pound cans. It has everything they need in it and they never had loose stools. Of course, this was important because we raised them in the house and as soon as they started licking out of a little plate, we would let them have cottage cheese. Later, they would be introduced to hamburger meat and those are the only two things we use to supplement even today.

What do you normally feed your grown dogs? Do you supplement them?

We basically use dry food. I don't think it makes any difference which one you use. I always said that if I wrote a book, it would be on "Foods, Fads and Fools" because the three go together. I've read many books on dog nutrition and it all comes back to this: the major dog food companies are extremely competitive. If one adds a vitamin, the other companies have to add the same

vitamin. They have a larger market than even the baby food market and they very carefully work these foods out; they have large kennels where they test. All major dog foods are good. Many people say not to give anything other than the dry food, but we don't hold to this. We've always given bacon grease and oils for the coats, and over the years we have gotten away from worrying about that sort of thing. We go to the grocery once a month and buy ten to twelve pounds of oleo and we melt it and pour it over the dog food. We've found that is as good as anything, quick, simple, cheap and it works. The butcher shops, under the meat saws, collect large amounts of grease and bone meal and if you have a good friend who will give you this, you're lucky. It is nothing but bone meal, marrow, fat and little pieces of meat, and we used to use that a lot. We would freeze it and cut it into chunks. Now that the butcher shops are gone, we don't do this and oleo is our basic oil.

When breeding two dogs, did you ever help a mating along?

Only once. Here again, nature is pretty good at this sort of thing. We never had any trouble. Once you create a problem, then you have to keep it going so we always arranged for ours to be in a calm, cool situation. If we felt the bitch was ready, we would leave them for a reasonable length of time; if not, we would separate the dogs and try again another time rather than let the male wear himself out. Once the bitch was ready, we had no problems. Only once did we have a bit of trouble and that turned into a fiasco ... (laughter)

nothing ever happened but everybody got worn out and we didn't get a breeding.

Did you ever refuse to service a bitch?

No. (laughter)

I think you're going to tell me what you told me to do many years ago with my first champion male! (laughter)

Right! I never refused a bitch, but I always commented that we wouldn't take a puppy or make any stipulations, and that we charged a flat \$500 cash - win, lose, or draw. Back in the '50's and '60's, \$500 was a big stud fee although I suppose it isn't today. Today I'd probably make it \$750. This way you didn't refuse them, or make them mad, and we don't need to run people out of the sport of dogs. These people would usually reconsider and remember where they could get a breeding for \$50 or \$100 and decide not to spend the price I was asking. Most of these people indicated they wanted to think it over and let me know, but no one ever let me know. We only bred outside bitches maybe once or twice. First of all, we don't really like to breed. We bred only for our own use, never advertised a stud dog in any of our breeds, and on rare occasions I have used my dogs for someone else, but it was strictly a "gratis" affair for a personal friend. Otherwise, we've never really considered ourselves into breeding or in the dog "business" part of it. Our involvement has been strictly pleasure.

Are there any particular faults that would keep you from breeding to an otherwise



First litter.

outstanding dog?

I would not have any qualms whatsoever if there was a dog I wanted to breed to, or if there was a bitch I specifically wanted to breed. Today I would lease the bitch if possible. It's much more important to have a good brood bitch because there are good studs all around. You shouldn't ever worry about how far away the stud dog is, because the one that's 50 miles from you isn't always the best one. If you are really going to be a breeder, one who breeds for exhibiting and showing and wants to make money, then you are foolish not to breed to the best. The "best" doesn't always mean the one that wins the most, either, it means the one who has produced good puppies.

What faults do you consider to be the most serious today in the Samoyed breed?

The most serious faults are the disqualifying ones, and you would certainly not breed individuals with those faults. Otherwise, the single worst things in a Sammy would be bad temperament and aggression. I also feel strongly about extremely bad rears and cowhocks. The rears got so bad several years ago that it was sickening. But bad temperament and rears are probably the most serious things to stay away from in Sammies today. In the early books I read it was stated, and I've seen it quoted elsewhere, that if you cannot fall down and hug a Sammy's neck, he's not a true Sammy. This is true; they are strictly a family dog.

What are your feelings on inbreeding, linebreeding and outcrossing?

All inbreeding is fine if you breed carefully, and good to good. All linebreeding means is that you are picking one individual back down the line in the two pedigrees and strengthening it through the new pedigree as much as possible. The disastrous results from inbreeding happen because you didn't very carefully pick your specimens to start with. You have to have a line like Kobe Kennels that has been going for 30 years; they knew what the dogs produced and had eliminated so much of the bad that they had a pool of genes which even made it hard to come up with the bad. But, when you start taking a dog that you got in Canada and breed it to a dog in California or Florida that has no common ancestors for 50 years, it's going to take you a long time to sort out those genes. You don't know what will

reproduce. Inbreeding and linebreeding are perfectly fine if they are done carefully. You have to be willing to sacrifice a lot of puppies if you do inbreeding because the bad will come to the top just as quickly as the good. I have done it but it is with lines that were developed for 40 or 50 years before they ever got to me. I would still do it if I knew exactly what I had, but I would also be willing to put the puppies down if there was any question.

What about outcrossing?

You are taking a shot in the dark. No one knows what the outcross is going to produce. There are some stud dogs that for some unknown reason have crossed well on almost every line. They just hit. If you have a dog who is producing on many different lines, I would be more prone to go with that particular dog. Or if you have a dog that is producing specimens like himself to the point where you can accurately say he has dominant genes, then an outcross is also fine with that type of dog. Here again, this dog may not be the biggest winner, but he is the dog who is producing.

If I were in the "puppy selling" business, then the name of the game is to sell puppies and, of course, you breed to the guy that won the National Specialty, or Westminster. It then becomes a sales tool. If you're truly a "breeder" and want to breed for the reasons that I wanted to breed, you breed to the dog who can produce what you want regardless of what he's won.

What does your "ideal" Samoyed look like and how does he move?

Movement, to me, is a very important part of the dog. I don't think you can divorce one from the other; you can't say all good movers are correctly built, but all correctly built dogs move well even though some of this overlaps. Basically, I like to see a dog under 24 inches at the shoulders. I know there are plenty of dogs that size around. The English tend to go for a smaller size in general and I would be more likely to come down rather than go up on size. I like to see a dog with a "smile," sparkle, and personality. I like to look at the dogs from the side first and see a dog who is just a bit off-square; good straight legs, well-bent stifles and a good, level, strong back. A dog shouldn't be too short coupled. Also, looking from the side you get the picture of the tail with its plume and proper curl,

and the neck length. Then I like to look at the front of the dog and see dead head-on what he looks like from a distance: are the feet straight, are they turned in or out? I like to see good straight front legs and I like to look past the front legs and not see the back legs. A good deep chest on a Samoyed is very important, and as I approach I hold the palm of my hand up and put it between the front legs. There must be space there and a good, thick chest. I like the so-called "Kobe head" with the blunt nose and bit better stop than most people seem to prefer today. I prefer the more blunt muzzle and head. I like a good arched neck and solid shoulders. I feel between the shoulder blades and like to get a couple of fingers between them. The back must be good, sound and strong. I like a good turn of stifle with pasterns straight up and down. From the rear of the dog, I like to see the tail up so that you can see two hind legs, and look ahead and not see two front legs. The one thing I didn't mention on the fronts is that being down in the pasterns is a bad fault as far as I'm concerned. I do look for that because I see a lot of dogs extremely down in the pastern today. This dog is a herding dog, sled dog and a family dog so you have to look for qualities of all three. He can't be too long in back, weak in back or unsound and still pull a sled. He sure can't herd if he's unsound in the rear. Once you see that the structural part of the dog is there, I like to see them move with a nice-smooth gait. I don't want to see choppy, stilted movement, in or out at the shoulders, running sideways. You should only see two feet coming or going, level back and smoothness. He needs good drive in the rear to pull. If you have this combination of a good sound animal and good movement, then you line them up and the one with the glow and charisma is the one you take!

One thing you didn't mention is coat.

The coat is a double coat. The coats have been from one end to the other in the past twenty years and you see some of everything. The coat is supposed to be a protective coat, but the Samoyed is the most beautiful dog going ... he's the "Cadillac" of the dogs. The coat is not really for beauty, however, it's for protection. The last thing I do is feel down into the coat (for which I've been criticized by a couple reps for "messing up" the people's

Do you have strong feelings about improper tails?

If the tail is set on properly, most of the tails will take care of themselves. Most of the time, the tails are not always up, but I like to see it up at least once when the dog is moving. I don't like to see them run with a long, flowing tail. I don't want to see it hanging to the ground and yet, I don't want to see it like the Elkhound, either. Again, I'm willing to give and take a little on the tail as long as it is set properly and it does come up over the back. A gay tail is not set on properly. The proper position is a nice, pleasant curve over the back down to the hip.

How do you handle the question of breed type versus structure?

The breed type is paramount although it is like a card with two sides. Without one side you don't have the other. Soundness is one side of the card and type is the other. If you have absolute type in a totally unsound animal, you don't have anything. If you have an extremely sound animal that you picked up at the pound, you don't have anything as far as breed dogs are concerned. The two have to go hand in

hand. The AKC keeps asking this question of judges about defining type and this sort of thing, and that is what everybody keeps coming back to. Type has got to be Number One. Soundness has got to be Number Two, but it is difficult to separate them.

Would you share your feelings about the state of the breed today as compared to thirty years ago?

Thirty years ago you saw so few specimens that you didn't have a lot to go on! Also, you must remember that with so few specimens out, the people who spent the money to have a handler or to go to shows, carried a pretty good animal with them. You did see fewer specimens, but basically good specimens. Today we have a lot more animals competing and more animals to compare. If you were to see 50 Sammies today you could depend on 10 being outstanding and 10 being very poor. Everything else is in between.

You mentioned rears a little while ago. We obviously went through a period of time there where the rears ...

... were extremely bad! We got into some real bad cowhocked rears with

really poor movement. The feet were out, the pasterns were down and everyone got involved (the good breeders) and they corrected the rears. But in correcting the rear, they lost the fronts! (laughter) The shoulders and the front ends got bad so now they are moving toward a happy medium. Basically, because we are seeing more numbers, we are seeing more good dogs. The percentage of good dogs is higher, and in the last five or six years, bitches took a marked improvement. In fact, I'm not so sure we aren't seeing better bitches than we are males.

I think most of the breeders will agree with you. We seem to be having an easier time coming up with good bitches than good dogs.

This is fortunate, here again, because if you are going to be a breeder the bitch is the most important factor and this is true in anything: horses, dogs, cats or whatever. If you have a good brood bitch, you can always find a stud to suit you somewhere.

To be continued...

Breeders' Directory

Kennels are listed in alphabetical order.

KEY TO ABBREVIATIONS.

- p - puppies available occasionally
- d - grown dogs occasionally for sale
- s - stud service to approved bitches
- b - dog boarding available
- h - Samoyed handling

LISTING is free to paid subscribers to The Samoyed Quarterly. Just send kennel name, name, address, phone number and appropriate letters to The Samoyed Quarterly.

CONDITIONS. The Samoyed Quarterly will not accept listings from dealers who acquire dogs for resale. All listings must be for Samoyeds with the understanding that all dogs offered for sale are registered or are eligible for registration with the AKC.

AL-A'RAF (pds). 403-256-0858. Mrs Barbara F Selock, Box 8157, Stn F, Calgary, Alta Canada T2J 2V3.

ALAKASAM (psh). 914-876-3741. Thomas & Beverly Delaney, 7369 Fred Short Road, Saugerties, NY 12477.

ALEVER (ps). 414-876-2957. Eve Rittberg, Rt 1, Box 14, Elkhart Lake, WI 53020.

ALLEGRO (pdsb). 409-560-4222. Jim & Terry Young, 734 Willow Oak, Nacogdoches, TX 75961.

ALPHA (ps). 215-966-4079. John & Lucy Ackerman, 104 Fairview St, Macungie, PA 18062.

ALTIER (psh). 516-735-4829. Mrs Lillian Rusch, 144 Bloomingdale Rd, Levittown, NY 11756.

AMBERLANE (pb). 913-642-1913. Pam & Rod Richardson, 8819 Antioch Rd, Overland Park, KS 66212.

ANATEVKA (pds). 619-448-7371. Mark Joseph Walsh, 9934 Pratt Ct, Santee, CA 92071.

ANTARES (ps). 228-8286. Jo Anne Marineau, 4897 John Muir Rd, Martinez, CA 94553.

ARNO (ps). 213-933-4314. Barbara Arnaud, 915 Muirfield Rd, Los Angeles, CA 90019.

AROKOP (pds). 217-787-4905. Helen J Pokora, 841 N Oxford Rd, PO Box 3241, Springfield, IL 62706.

ASGARD (pds). 208-265-4695. Ruth Mary Heckerroth, 2299 Cocolalia Loop Rd, Cocolalia, ID 83813.

AURORA (ps). 514-437-0350. Renate M Frey, 107 Ile de Mai Boisbriand, PO Canada J7G 1R7.

BARBICON (pds). 201-766-7794. Mrs Barbara Brisgel, Colonial Dr at Harding, Morristown, NJ 07960.

BARRON (pds). 314-724-2341. Barb & Dan Cole, 430 Blanche Dr, St Charles, MO 63303.

BJELKIERS (psh). 011-61-1474. Mr Werner Degenhardt, Caixa Postal 18097, Aeroporto Congonhas, 04699 Sao

Paulo, Brazil.

BLEUARTIC (pds). 277-6063. Lee G Shartau, 324-13 Ave NW, Calgary, Alta Canada T2M 0E8.

BLIZZARD (pds). 401-397-5749. Roland & Jane Pelland, RR 3, Box 948, Foster, RI 02825.

BRYDAWN'S (pds). 403-962-5874. Brian & Donna Rebus, Box 62, Spruce Grove, Alta Canada T0E 2C0.

BUBBLING OAKS (pds). 516-543-SAMS. Jack & Amelia Price, 128 Cowie Rd, Commack, NY 11725 2201.

CANDENZA (pds). Betty Powell, 159 Lewis St, Saddy Daisy, TN 37379.

CAPRA (pdsb). 314-745-2197. Mr & Mrs Monty Smoot, Rt 2, Box 246A, Wright City, MO 63390.

CARIBOU (pds). 208-357-3134. Joe M Dyer, 334 W Pine, Shelley, ID 83274.

CHARMIN (ps). 601-992-9142. Michele Plunkett, 111 Boxwood Place, N Brandon, MS 39042.

CHEKKALOV (pds). 801-485-3017. Ron & Darlene Boyce, 2504 Simpson Ave, Salt Lake City, UT 84109.

CHERDE (s). 707-745-6423. Dennis & Cheryl Young, 582 Cooper Dr, Benicia, CA 94510.

CHRISTORI (pds). 219-626-2472. Vicki Vogley, Box 503, Walton, IN 46994.

CHUCKA (ps). 914-254-4648. Chuck & Kathy Bouton, Jr.

Box
CLC
Che
COL
9400
CRC
342
CYN
Brod
DAN
1000
178
DEI
Medi
DEN
128
DEN
Mettr
DESI
Gillar
DEVI
Russ
DIXIE
Box 9
DOW
Calle
EL-A
Cross
FANI
Attorn
FANT
RD 1,
FORF
Buenc
GH06
Sevoll
GREY
Helfin
HERI
Faulm
HILLC
Box 5
JAHA
HI 968
JASAI
959, M
K-WA
Box 12
KAMA
Ont Ca
KARA
Iris M C
KASH
Box 35
KAUZ
3628 B
KERM
Hamilt
1B2
KOLA
95338
KRISKI
Abbott
KROS-
SW 156
KUBLA
Mooreh
91605
KYLOC
12317 L
LYNTHI
9112 En
MAGNC
Lawrenc
MANSH
Port Ho
MARCH
Kulokosl
MARJO
1345 St
MILLAM
Shore D
MOONL
Jeanne
MYSTIC
& Raym
AL 3521
MYSTIC
11909 3C