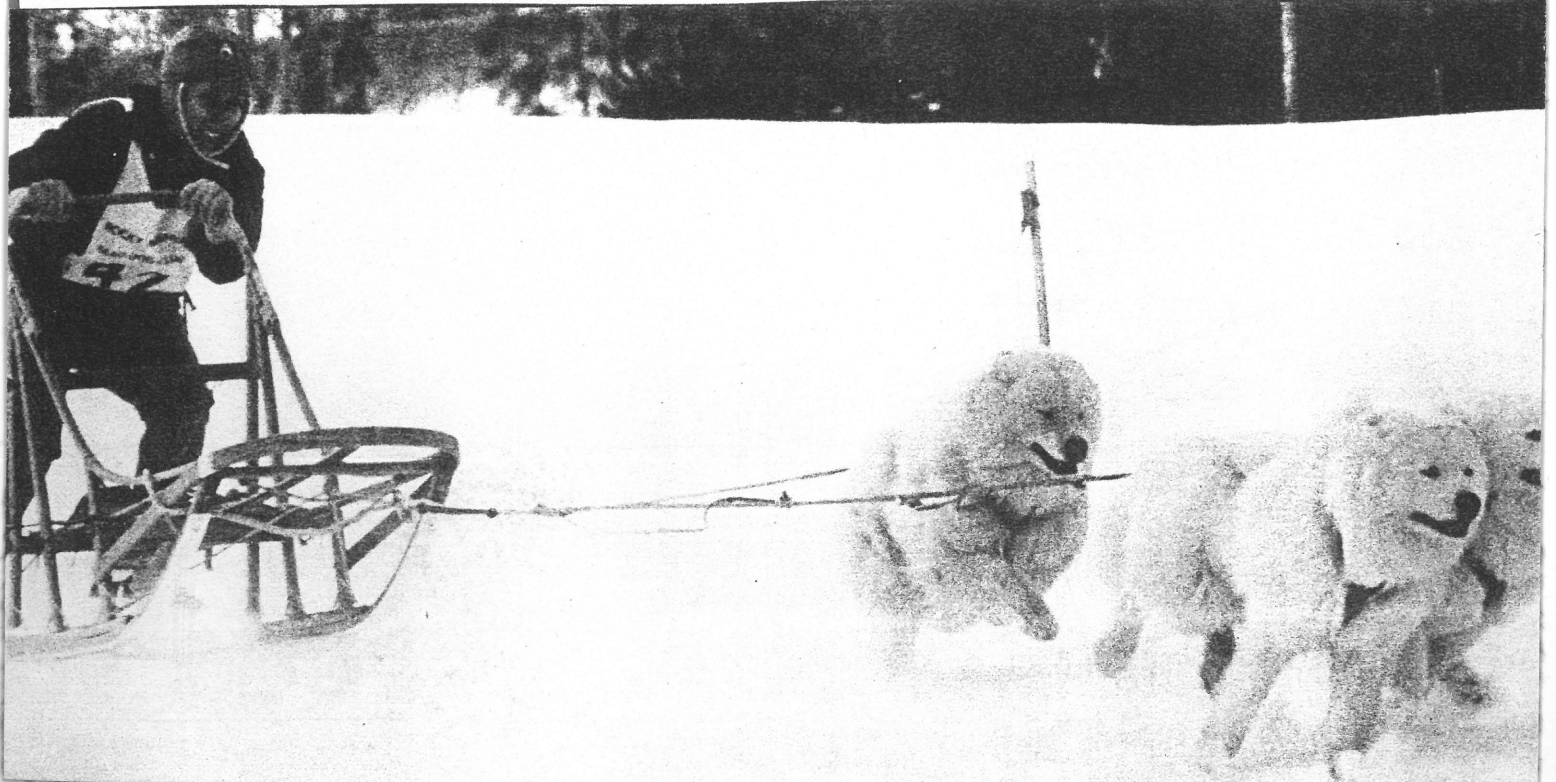
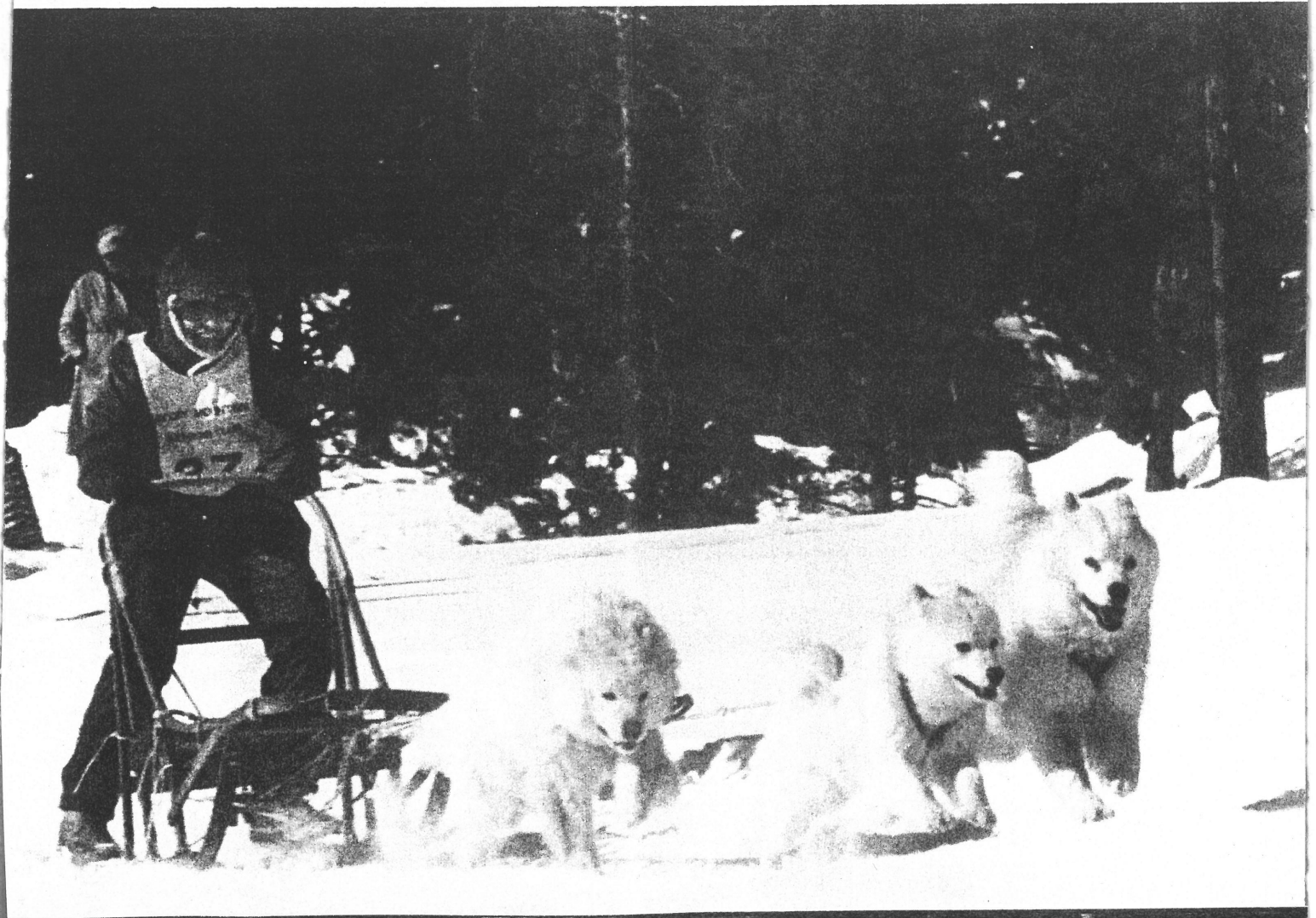


1989 SCA & OWS TOP SAMOYED TEAM



Best Team on the Trail

Award Winning Team



—Sled Dog Racing—

NECESSARILY confined to sections where the winters' snows maintain over protracted periods, sled dog racing is, nevertheless, a definite part of the sporting life in the United States. In Alaska sled dog racing has long been a "national" pastime and has contributed much to the development of better dogs for work in that territory. Yet the fastest dogs, of course, are not always the most valuable for the "long haul." Sled dog racing is regarded as the Far North's greatest sport.

One of the most prominent and colorful of American organizations devoted to sled dog racing and the improvement of sled dog breeds is the New England Sled Dog Club. Organized in 1924 with Arthur T. Walden, famous Alaskan dog-driver, as its first president, the club annually stages a series of races which excite the interest of natives and winter vacationists alike. These events are held in various towns throughout New England.

Most of the teams now racing are composed of Siberian Huskies. The Alaskan Malamute is represented in a number of teams.

Sled dog racing has made important strides in the New England region, as well as parts of Canada and Alaska. Other breeds have been introduced into sled racing. R. G. Wehle of Scottsville, N.Y., several seasons ago had marked success with a team made up of

pure-bred Pointers, some of them field-trial winners from his Elhew Kennels. These Pointers, when conditioned, possessed a turn of speed that enabled noteworthy success in a number of races.

There is no national organization as such that governs sled dog racing. However, the Alaskan circuit is extremely well organized and is considered the major league of sled dog racing on the North American continent. The New England Sled Dog Club, Inc., stages its World Championship Sled Dog Derby at Laconia, N.H., and the New England schedule of sled dog events is probably the most important circuit of races in this country.

Independent clubs, such as the Laurentian Sled Dog Club, have their own constitution, by-laws, and running rules. The race trial is mapped out—a race may be run in two heats—and specific race rules apply to the particular event.

The races are run over back roads as much as possible, the course distances ranging from 12 up to 30 miles, depending upon the snows and the amount of conditioning the teams have had. A good team can average 12 to 14 miles an hour when in proper condition.

The teams are driven in the "gang hitch" (a single leader), with the rest of the team in pairs. Teams usually consist of five, seven, or nine dogs. The pair



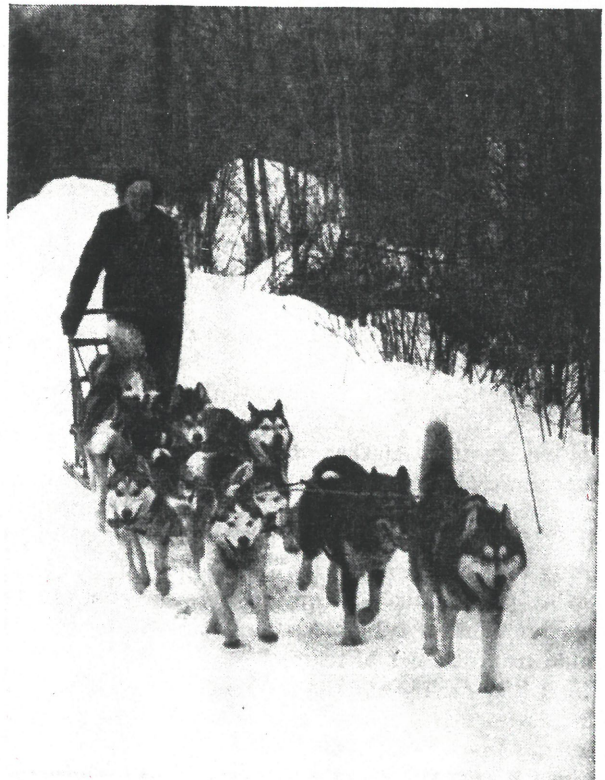
A New Hampshire racing team of Siberian Huskies.



A popular event, this being one for youngsters. Photo by Hank Babbitt.



behind the leader are called "point dogs," the next pair or pairs "swing dogs," and the last pair "wheel dogs." The entire control of the team is by voice. This makes a selection of a leader most important. Contrary to general opinion, the leader does not exercise control over the team by his physical prowess. The commands are "All right" or "Let's Go" to start, "Gee" for right and "Haw" for left. Colored flags are used to mark a course, a red flag on the right denoting a right turn, a red marker on the left meaning a



Another Siberian Husky team from New Hampshire where winters favor the sled dog sport.

left turn, and a blue marker signifying straight ahead.

Races are run on a handicap basis, with prizes for the handicap winner and the elapsed time winner. Handicap intervals are figured on past performances, the handicap committee regulating the individual starts so that each team should, theoretically, finish at the same time. The team crossing the finish line first is the handicap winner, the team making the fastest time is the elapsed time winner. Some condensed rules of sled dog racing follow:

The sled shall be capable of carrying the driver, big enough to carry a dog, and shall be equipped with a brake. For the first heat a team will consist of not less than five (5) dogs, and for each succeeding heat no team may start with less than four (4) dogs.

Starting times are drawn before the race for the first heat. The order for the second heat shall be determined by the elapsed time for the first heat. The slowest team shall start first and the other teams will follow in order of elapsed time.

Drivers and teams are to be inspected by the veterinarian and judges before the start of the race.



Notice that this is a sled dog team made up exclusively of Samoyeds—an Idaho team.

Dogs or teams coming to the starting line unfit or incapable of finishing the course can be disqualified.

Dogs must be carried on a sled if they become unfit after departure and drivers must return with the same dogs as registered at the start.

Whips are limited to a three-foot length. The use of a whip, other than snapping, except when dogs are unmanageable, is prohibited. Judges can disqualify drivers found guilty of using the whip otherwise. Any abuse of dogs is forbidden.

One team has the right of way over a preceding team when the rear team comes within 20 feet of the team ahead. When the right of way is asked for under these conditions, the forward team must make way for the following team or come to a full stop if requested, except when repassing or except within one-half mile of the start or finish line.

Use of internal medicament, injection or stimulant to the dogs before, after, or during a race is forbidden, except for medical purposes.

No dog shall be brought to any Club race from a kennel where there has been an indication of distemper within four weeks nor shall any person from such kennel attend a race. All dogs must be inoculated against distemper. No dog given live virus shall be brought to a race within four weeks.

Dog-drivers, owners, or any other person, are forbidden to assist a team by pacing. Outside assistance will be allowed only when teams are unmanageable.

Every driver shall wear a number visible in front and back *at all times*. This same number will be shown on the sled.

The Samoyed's destiny: Sams were originally bred as sled dogs in Arctic regions. This team, owned by Miss Shirley Keepers, proves that the breed can still give a good account of itself in harness. Photo by Eidson.





L
l
o
y
d
V
a
n
S
i
c
k
l
e

The legendary White Way team, owned by Mr & Mrs. A. E. Mason, driven and trained by Lloyd Van Sickles. In lead is Rex of White Way, who also recorded a record weight pull of 1,875 pounds at West Yellowstone, Montana. This picture was taken in Idaho in the 40s by Lloyd Van Sickle and originally appeared in the July 1961 NDN.



DOG DRIVER



Sled race photo, taken circa 1969.

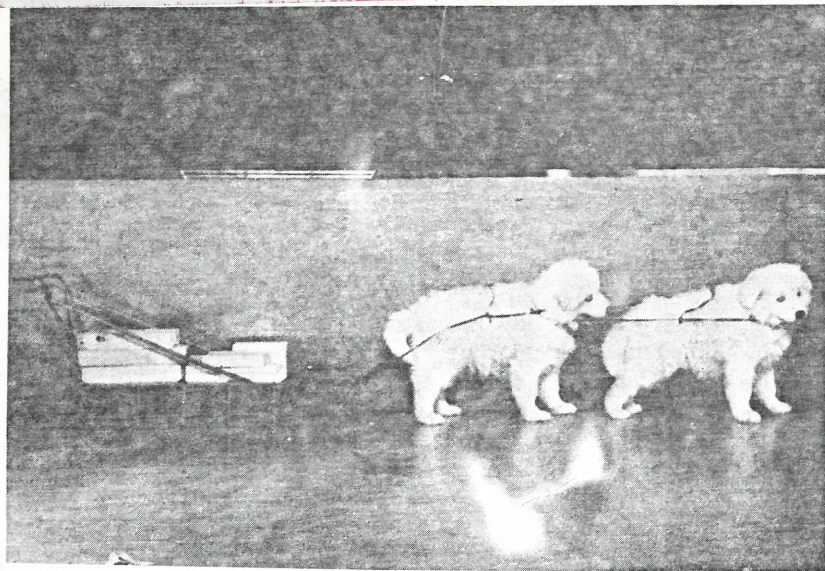


With all feet and one runner off the ground.



March 8, 1986 • New England Sled Dog Club Race – Rangeley, Maine





Wanda Krauss works out her team on wheels on the grass when there is no snow.



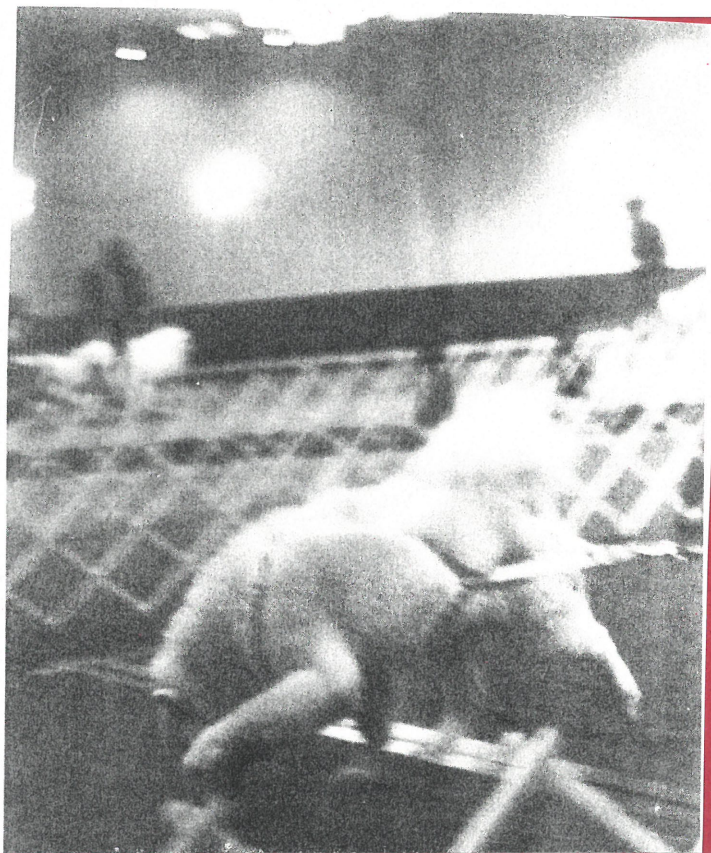
Mrs. Alyce Seekins, Jr. of Troy, New York, is a beautiful sight to see as she races her Samoyed team across the snow. This photograph is featured in the book "The Samoyed" by Mrs. Alyce Seekins, Jr.



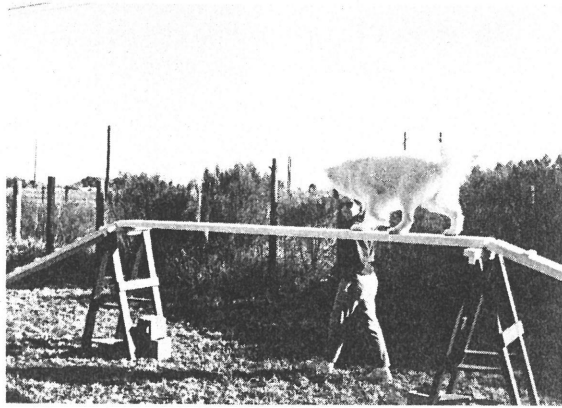
"The Scenery Never Changes Unless You Are
The Lead Dog(s)."



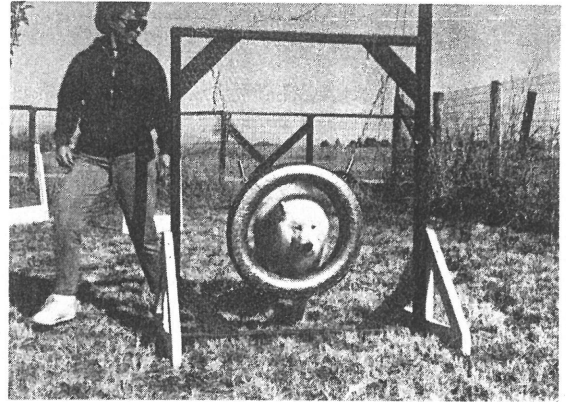
“It takes pull to win.”



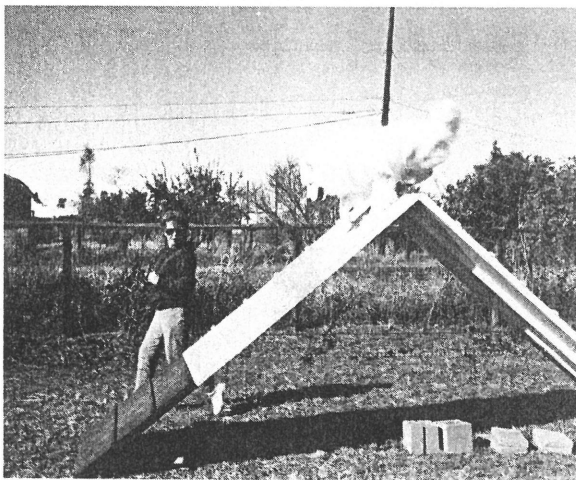
(Taken from rules and regulations of the USDAA).



DOG WALK



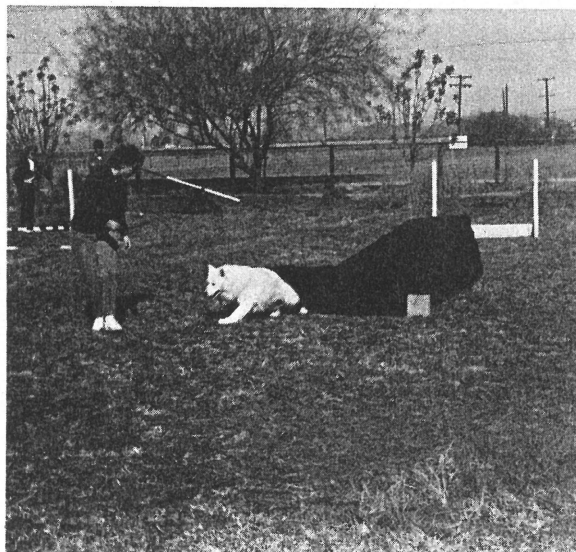
TIRE JUMP



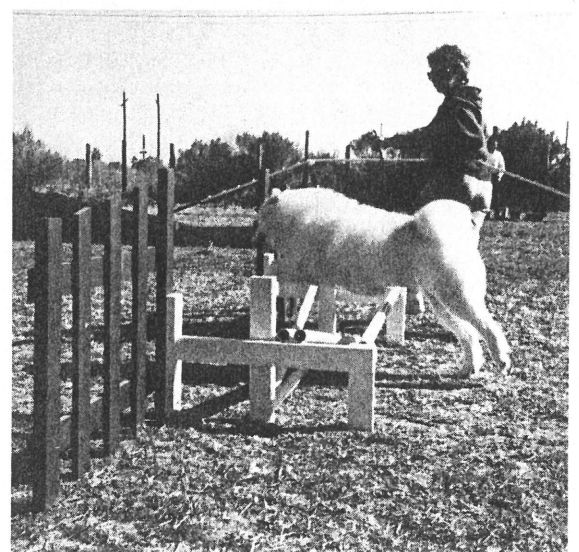
A FRAME



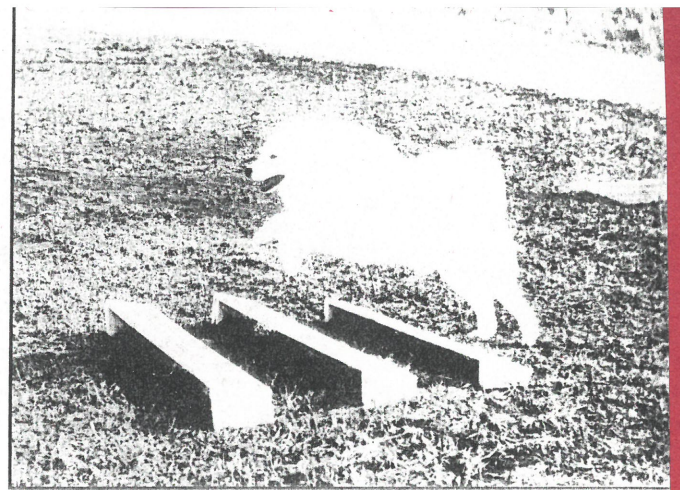
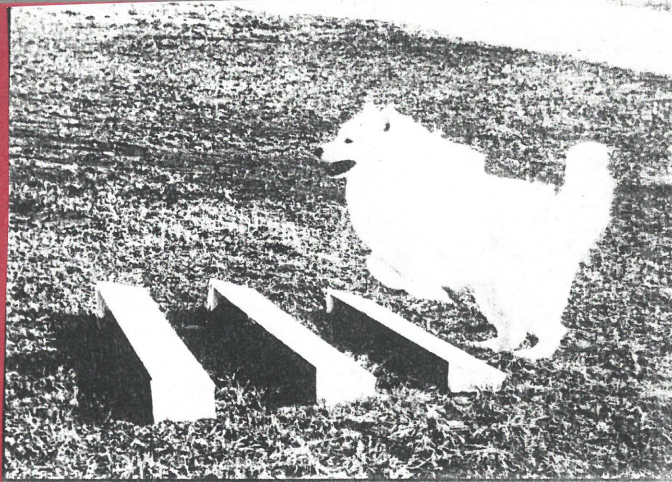
TEETER TOTTER



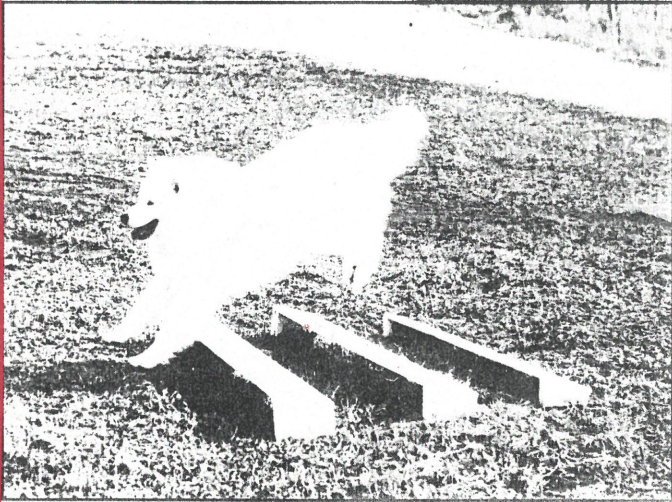
COLLAPSED TUNNEL



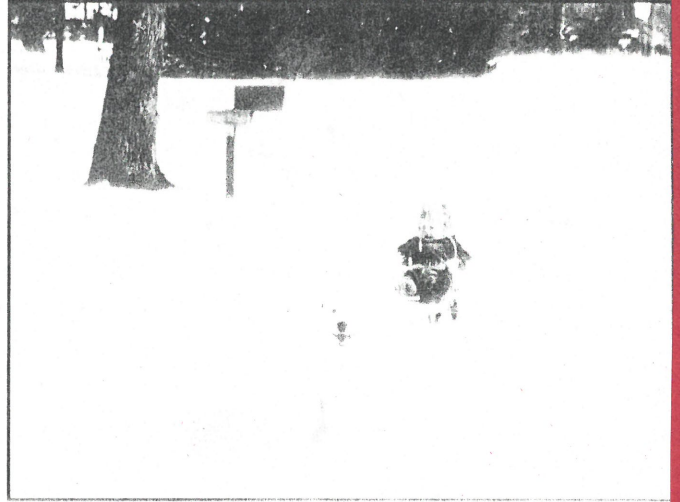
BRUSH JUMP



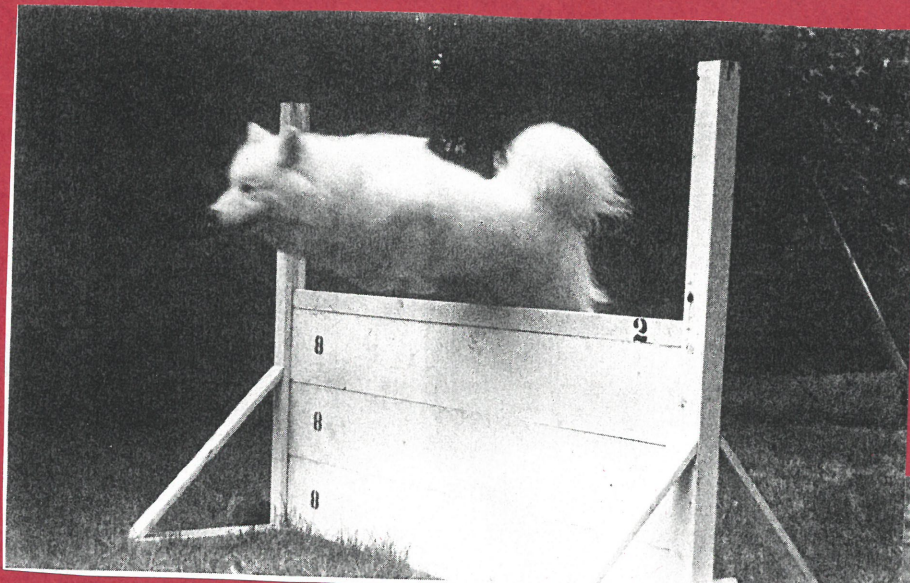
Above, left and right: Zeke doing the Broad Jump.



Zeke completing the Broad Jump.

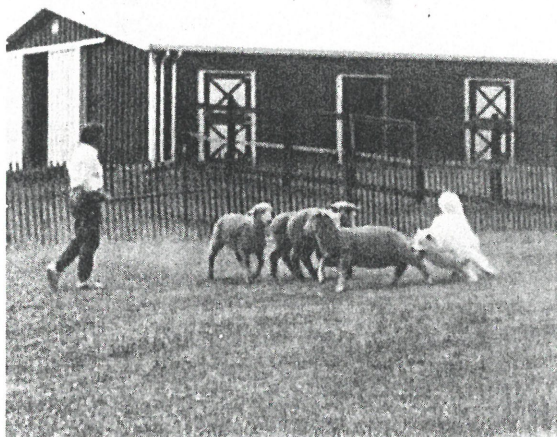


Zeke, pulling author's son. He learned when he took off with the leash in his mouth with the author in hot pursuit. Next came the more formal training.



I remember a long time back, one of the Am Can Ch. Lulhaven's Ensign had a daughter who earned a HIC. Anyone remember her name and any of the particulars?

I'm sure there are other dogs who own HIC certificates out there. Drop me a note and get on the list.



CH. DONNEREIGN THE METROPOLITAN, HIC



CH. KAMODANS DEALERS CHOICE, TT, HIC

IN TRAINING

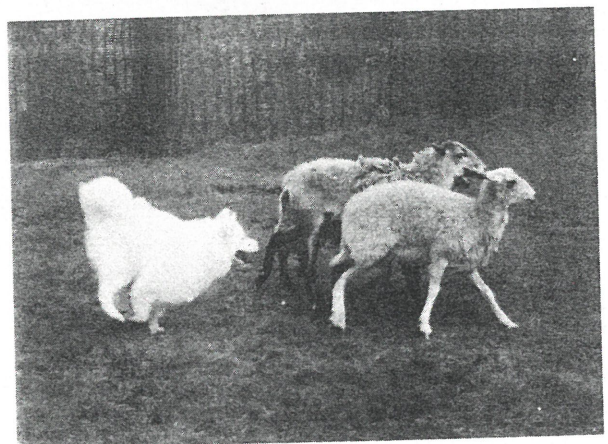
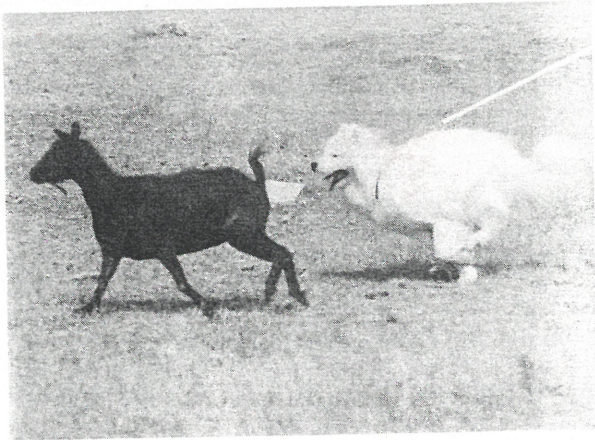
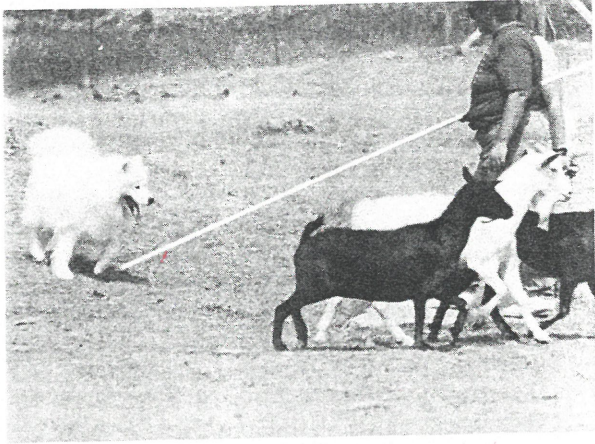


TSIULIKAGTA'S KUNIK (6 MONTHS)



SANCHA'S ILLIANA (10 MONTHS)







Samoyed owners have found that their pets' combings can be woven into beautiful and luxurious articles of apparel. Here Mrs. Lester Ellis models a coat and frock made of Samoyed wool. With her is Prince Valiant.

Wool, brushed from Samoyed coats, is being made into articles such as bed blankets with satin bindings; crib blankets; rugs; woven or knitted suits, topcoats, scarves, socks, baby sacks and caps, and even felted Numdah-type rugs. These articles take dye beautifully and can be washed and even boiled. There is no doggy odor to intrigue other dogs. Yarn making and weaving can be hired, but owners who have carders and spinning wheels or mechanical equipment take much pleasure in this craft.

Season's Greetings
1989



Season's Greetings
1989



THE GREENWICH WORKSHOP



SCOTT KENNEDY AND JOHN WEISS



With *In Training*, Scott Kennedy invites us to share his love for the wilderness and the sport of sled dog racing... and to discover a hidden onlooker.

"Much of the fun of sled dog racing comes from the dogs themselves," says Kennedy. "I call this work *In Training* because these pups, playful Siberians and Samoyeds, are mimicking adult sled dogs and having a lot of fun doing it. 'Let's mush!' they seem to be saying. One pair tugs on the tow line, the other two perch on the sled, prepared to perform the role of passengers." It does

look like fun... and that's why a pair of curious eyes are watching from a distance.

In Training by Scott Kennedy: a classic work in the Kennedy tradition.

IN TRAINING by Scott Kennedy
17⁷/₈" w × 11³/₈" h
3350 Signed and Numbered \$165.
SPECIAL REMARQUE EDITION
17⁷/₈" w × 12³/₈" h
150 Signed and Numbered
with Pencil Remarque \$365
Shown is one example of the
remarque from the Special Edition.

