

## The Smiling Breed

*Phoebe Faulmann*

**H**OW very interesting that a breed that has been dubbed "The Smiling Samoyed" has so many non-smiling owners and handlers turning up in the ring. More and more people are getting into an overcompetitive attitude. They allow themselves to become so hung up with their desire to win, win, win that they forget the feelings of the other exhibitors and even worse, the feelings of their dogs. They no longer attend a show for the "fun" of it. For them it has turned into a grudge match. Their need to win has become so great that they will go to great lengths to "get the win" any way they can. Honestly or dishonestly. Politically or otherwise.

It is no secret that being on the top is fun. Consistently handling a top winning dog can be quite an ego trip. Especially when the dog is winning under many different judges and it is evident to exhibitors alike that the wins are earned honestly and obviously on your dog's own merits! Those circumstances make it easy to smile, smile, smile ... at anyone and everyone. It is certainly a good time for old Fido ... he never had life so good. But no one can stay on the top all the time. Even the best things come to an end. Being on the other side of the winner's circle is no reason to feel angry or cheated. You shouldn't take your disappointment out on your fellow exhibitors (i.e., the guy who beat you). You have to realize that if the same dog or the same handler won all the time, the challenge of what we are trying to accomplish would be completely removed.

Competing can be a thrilling experience, even if you don't win every single time. Just the thought of you and your dog working together as a team for a single purpose is reason enough. Dog showing is still considered a sport. The dictionary defines

sport as a physical activity engaged in for pleasure. Yet, it is becoming more apparent that fewer and fewer people are finding it to be a pleasurable experience. At any given time, it is possible to pull a chair up to ringside to watch the judging and see anything from uncontrollable displeasure to actual abuse of the losing entries. Some exhibitors leave the ring jerking on the lead and muttering obscenities, as if the poor animal lost for the spite of it. The ill-tempered exhibitor hauls his dog off to the exile of a hot car. It's hard to believe that this kind of treatment is what the dog deserves because he placed poorly. This type of exhibitor has no praise for the winning dog. He can name off her demerits as fast as he can the make of his own car. He tends to blame his loss on anything from the judge's lack of integrity to the condition of the ring. And worst of all, he seems to make himself heard above all else. More and more this type of exhibitor is taking the joy out of showing.

Sometimes just winning is more trouble than it is worth. You can almost measure your success by the number of tall tales that are currently being passed around about you and your dog. A seasoned exhibitor knows how to handle this kind of gossip, but to the newcomer, it can be quite depressing and sometimes very discouraging. Believe it or not, some people enter dog showing because they like to meet new people and make new friends.

Some of the poor sports weren't always that way. They have let themselves fall into a rut. They have come to think that they accomplish nothing by showing their dog unless they win. This is their measuring system for success. They have forgotten the primary reason they took up the "sport." It's sad to see that people will sacrifice the love of the breed for the love of the purple and gold.

It would be wonderful if we could

learn to share the other guy's win with as much happiness as we experience when we have our turn at winning. Congratulate the winner and honestly mean it; accept the winning dog for what he is without belittling him behind his owner's back.

Let the other guy enjoy his win to the fullest.

And don't forget old Fido. No matter how he places when the ribbons are handed out, remember he is your friend and the reason for the whole silly game you're playing. Be sure your dog comes out of the ring as proud and happy as he was before he went in. No matter how you place, it's his day; he deserves to enjoy it. Set that standard for yourself.

It's been said that after a time owners and their dogs begin to look alike. Wouldn't it be awful if some of our "Smiling Sams" took on the frowns of their owners. So if you find that you really aren't enjoying yourself and your dog is enjoying it less, maybe it's time to make some changes in your way of thinking.

But most of all ... remember to SMILE ... your Sammy may be watching. •

## Conformation

### A Question of Purpose

*Jim Osborn  
Northridge, California*

**T**HE Samoyed – hunter, herder and hauler! Or so he is advertised. Is he really a "triple threat" dog? A jack of all trades? Or is he simply a mediocre performer at a variety of odd jobs?

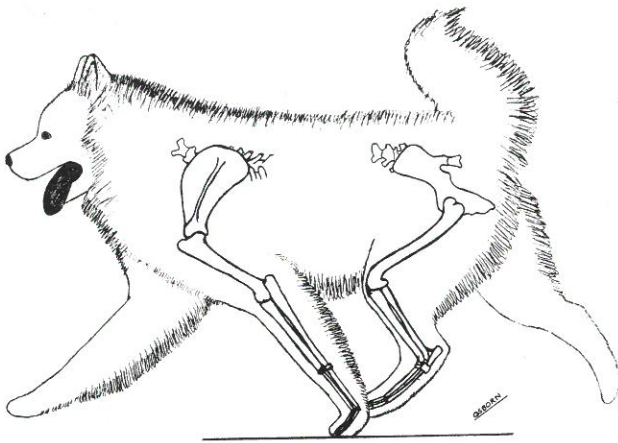


Figure 1A. The dog is shown between strides. One stride has just been completed which involved a diagonal pair of legs, consisting of the left front leg and the right rear leg. In this figure, the right leg has completed its power stroke and is extended behind the dog in the "follow through" position. The left front leg has supported and lifted the body as well as supplying forward thrust and is shown ready to leave the ground in the follow through also. The dog, at this instant, is almost airborne and is being carried forward in a downward arc by its weight and momentum. The opposite diagonal pair of legs, right front and left rear, have been swung well forward ready to "catch" the weight of the dog's body on its downward arc.

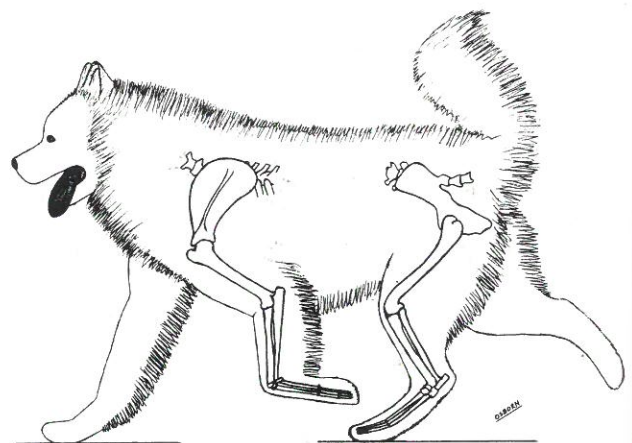


Figure 1B. The forward and downward momentum shown in the previous figure has been caught by the diagonal pair of supporting legs, and the body has been drawn forward and upward by the muscular action of these supporting legs. The right foreleg is moving in the locked elbow position to provide a rigid prop which will force the dog's weight upward, and the muscles behind the upper arm and shoulder blade are contracting to draw the dog's weight forward over the supporting column of bones. The left hind leg, in its forward position, is supporting considerable weight at this point, but is not attempting to lift that weight. This hind leg is remaining in the flexed position and the muscles behind the femur are contracting with great force to draw the pelvis forward. At the same time, the legs on the opposite diagonal have completed their follow through and are now being drawn upward into a flexed position and starting their forward swing.

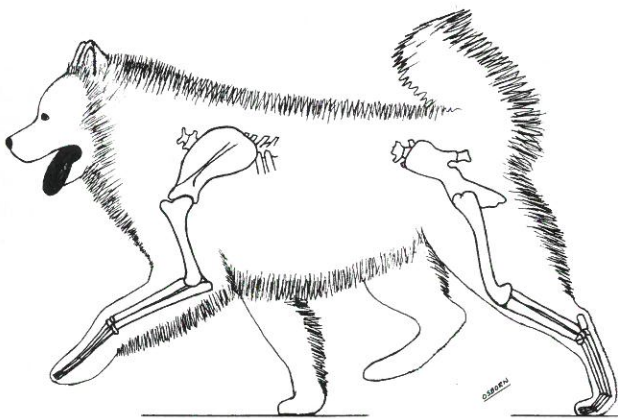


Figure 1C. This illustrates the "instant of push." The supporting right front leg has succeeded in lifting the body, and at the same time, the body has been drawn forward far enough that most of the dog's weight is bearing on the supporting front leg. The muscles of the upper arm and shoulder are providing substantial forward drive. The left rear leg has now been relieved of most of the body weight, and by getting the pelvis forward, ahead of the hind foot, the leg has started to straighten. In the straighter position, the muscles have a better mechanical advantage, so that now, as the hind leg straightens out behind the dog, comes the moment of maximum forward thrust. It will be noted in this figure that the opposite diagonal pair of legs are now highly flexed and well along their forward path in preparation for the next stride.

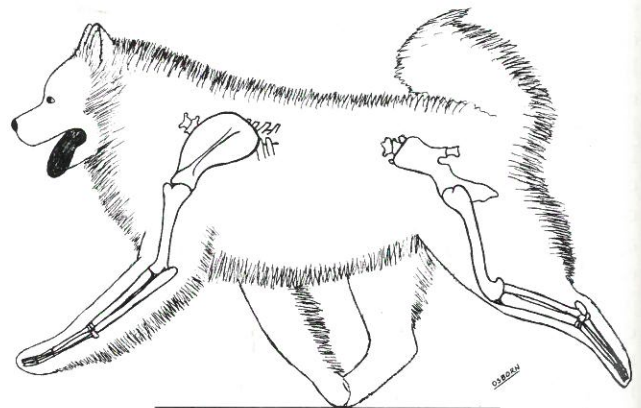


Figure 1D. Shown here is the completion of the stride with the right front and left rear legs having lost traction and contact with the ground, but continuing their rearward arc of travel in the follow through action. The opposite diagonal pair have now reached the point of full forward extension and the dog's movement is by momentum, with the downward arc of travel to be caught to start the next stride.

Those are startling questions, and providing a comprehensive answer would require an in-depth examination of a large number of factors. A broad consideration of these questions would fill several volumes, and that's obviously not the intent of this article. What is intended is to consider these tasks in the light of the requirements of conformation that each task imposes on the dog, and try to determine whether or not a single dog could function effectively at more than one of these jobs.

**W**E should keep in mind that all domesticated dogs originated as hunting companions to man. None of the arctic breeds are very far removed from their predatory wolf-like forebears, and their closest relatives are the modern field and gun dogs, the retrievers, spaniels, setters and pointers.<sup>1</sup> We should also note that man, the hunter, preys on game ranging from hares to bears, and in the hunt he employs dogs as diverse as the Borzoi and Beagle. The manner of employment and hunting techniques are equally diverse. The Samoyed, then, without going into the details of conformation, should be accepted as at least being physically able to hunt. Can he also function effectively as a draft dog? Or a herd dog? These draft and herding functions appear to impose some considerable conflict of requirements of conformation, so let's examine those requirements in some detail.

The tasks that we want to examine all involve MOVEMENT. A dog may keep a wary eye on a grazing reindeer herd while pausing momentarily, but the real work – bringing back strays, moving the herd to new grazing land, or harrying predators – all involve constant motion. Likewise, the draft dog doesn't get his load from here to there while sitting on his backside howling at the moon. The load moves when he does. The manner and type of movement required, then, is the heart of this analysis. So, before proceeding to the examination of the specific tasks, let's briefly review the basic structure of the dog's running gear and his manner of locomotion.

The trot is the basic working gait of many dogs, including the sled dog and the herd dog. The trot is a simple two-time gait with support coming from diagonal pairs of legs – right front and left rear, and then left front

and right rear. The essential sequence is illustrated in the four parts of Figure 1. In Figure 1A, the dog is shown just starting a single stride, and the sequence ends in Figure 1D with the dog ready to start a stride with the opposite diagonal pair of legs.

The sequence illustrated and described represents a single stride by the dog which succeeded in moving him forward by roughly two feet. That accomplishment required an incredibly intricate sequence of coordinated contractions and relaxations of dozens of muscles. The entire sequence would take place in about a tenth of a second for a dog at a fast trot. This, then, exemplifies the dramatic importance of neuromuscular coordination. If these dozens of muscular actions are not accomplished in perfectly timed synchronization, the results will be loss of power and speed, and wasted energy. A muscle that relaxes a split second too soon allows a joint to go lax, or one that contracts a split second too soon is opposing the contraction of some other muscle. Either of these conditions will result in momentary loss of momentum and unnecessary muscular strain. Regardless of what task we ask of a dog, neuromuscular coordination is a primary requirement for a smooth, fluid, efficient movement. It is a quality that is difficult to describe or quantify, but its importance cannot be overstated.

There are some other biological factors involving bones and muscles which we should keep in mind also. First, as bones are made larger in diameter, relative to their length, they become less dense, more porous and more brittle.<sup>2</sup> Therefore, even though a task may require that a dog be heavy of frame, he should never have boning that is massive. Secondly, muscles have more strength as they become thicker and broader, relative to their length, but at the same time, they lose some reflex quickness as well as metabolic efficiency.<sup>3</sup> Therefore, a very thickly muscled dog will be slower and consume more food than a more finely muscled individual of the same body weight, presenting a dilemma requiring compromise in many instances.

Turning now to our herd and sled dogs, let's try to figure out what special requirements of conformation are required by each task.

The first thing is to provide a definition of the tasks themselves. For the herd dog, that's relatively easy. In the context of the arctic dog, the only other domestic animal of any economic importance is the reindeer. The reindeer is a relatively large member of the deer family which ranges from Kamchatka in eastern Siberia westward across northern Asia and northern Europe to the Scandinavian Peninsula.<sup>4</sup> These are migratory animals ranging far into the arctic tundra in summer, and into the subarctic forests in winter. Year-round domestic herds were maintained by the Samoyeds at least as far north as Kolguyev Island in the Barents Sea<sup>5</sup> and by the Lapps at the northern end of the Scandinavian Peninsula.<sup>6</sup> The manner of utilizing the reindeer varies from the hunter who simply follows the migration of the wild herds, to the organized management of domesticated herds. The hunter of the wild herds would utilize dogs for transport and hunting, while the managers of the domesticated deer would want a dog for control and protection of his herd.

**O**UR herd dog, then, must be able to cover a lot of ground efficiently, following the herds in their continual wanderings or driving them to new grazing lands, rounding up stragglers, and keeping the herd together. As the reindeer is capable of considerable speed over rough or uneven terrain, our dog must be of sufficient size, and of proper build, to cover rough ground at a fast trot, and must have very great stamina. In keeping out of the way of the active and sometimes aggressive reindeer, and in coping with wild predators, our dogs must have very good reflex quickness and a high degree of nimble mobility for sharp starts, stops and turns. In short, he must be of at least medium size with good length of leg; he must have great agility, and be capable of a fairly fast sprint; and he must be a tireless trotter over great distance.

Specifying the capabilities of the sled dog is not so straightforward due to the many possible combinations of load, speed and number of animals employed. At one end of the scale would be a lone arctic traveler, off on a few days' journey with the load consisting of the sled, driver, a few personal belongings and a few days'

shown  
l pair  
ward  
legs.  
ion to  
eight  
shoul-  
rward  
eg, in  
ght at  
s hind  
scles  
draw  
oppo-  
id are  
arting

de with  
ion and  
ard arc  
diago-  
l exten-  
vith the  
stride.

worth of supplies – a total load of perhaps as little as 250 pounds. Add another passenger and supplies for a longer trip and the load may go up to 500 to 600 pounds. For moving an entire household, or engaging in commerce, we get into the requirements of heavy freighting, with loads as large as can be handled by any available sled and team – perhaps three quarters of a ton or so. With this wide variation in loads and speeds, it would seem prudent to define two separate types of draft dogs – one for heavy freighting and slow speeds and one for lighter work at higher speeds.

Any sled dog pulling a significant load obviously has to have considerable muscular strength and be rather substantial in size. In the heavy freighting dogs, these considerations probably outweigh all others. The dog should not be so huge and bulky as to preclude a continuous all-day effort, every day, but load moving ability is the primary requisite. For the light to medium load, it should be moved at a fair rate of speed, and this would portend a smaller and more moderately built animal. Our light freighting dog, then, should have a combination of strength, speed and endurance, where no one of these qualities is unduly compromised for the sake of another. A team of heavy freighting dogs should be able to move a load of perhaps 1,200 pounds 25 to 30 miles per day under normal conditions, and the lighter team might be expected to do at least twice that mileage with a load of 400 pounds or so. The dogs must all have the stamina to work continually hour after hour, day after day, at the most grueling task, in the world's harshest environment.

**A**S to the details of size and conformation, let's first examine the requirements of the heavy freighting dog. To start with, how big? This is determined by the interrelationships of three factors: (1) the number of dogs to be employed, (2) the amount of weight that can be moved by each dog and, (3) the total weight of the load. Considering the first of these, the number of dogs that have been used has varied all the way from one to a couple of dozen. The very large teams are almost totally unmanageable and most drivers working every day would prefer to deal with twelve or fewer.

On the other hand, if too FEW dogs are used, then the injury or loss of a single animal might jeopardize the whole team. The amount of weight to be drawn per dog can have wide variation also. Experience would indicate, however, that we can reasonably expect a dog to work all day at a modest speed drawing a sled weight of about one to one and one-half times the dog's own body weight. They are capable of very much more than this for short stretches, but considering a variety of terrain and conditions, this would seem a safe bet. This would indicate a weight range of 80 to 100 pounds for our heavyweight. Ten to twelve 80-pounders could haul a 1,200-pound load, or the same load might be handled by as few as seven or eight dogs of the 100-pound class. In either of these cases, the loss of one dog would not impair progress very much, and the team could still make good headway even with the loss of two members.

The nature of the work performed dictates the general build of the dog, and for our heavy freighting animal, we obviously require that the dog be rather heavy of frame and very well muscled, particularly in the loin and hindquarters. He should not, however, be so bulky and heavy as to preclude a free, easy trot, load and conditions permitting. The height will probably be in the range of 25 to 28 inches at the withers. With a dog this tall, and considering the need for stability against a heavy load, the dog should not be excessively high on the leg. Elbows set at one half the total height would be about right, and the elbow should be at the lowest point of the chest. The overall outline of the dog would be nearly square, but with the moderate leg length, the body, from sternum to tip of pelvis, might be a bit longer than the total height of the dog.

The conformation of the running gear is obviously one of the more important considerations. In front, the heavy freighting dog should have a long, well laid back shoulder blade, with a long upper arm set at right angles to the shoulder blade. In the rear, he should have a moderately flat croup (pelvis), a moderately long upper thigh, moderate angulation at the stifle joint, and a hock set as low as possible.

Now, that description might raise a few eyebrows, so let's examine those

requirements in some detail. By way of example, let's look at the human athlete for a moment. Consider, if you will, three professional athletes, all of about the same height. One is a cross-country runner. He is slimly built, and runs in a nearly upright posture, using the longest possible strides. The next man is a short distance sprinter. He will have a bit more muscle, will run in a slightly more pitched forward position, and will use a somewhat shorter stride than the long distance man. Our third athlete is a heavily built offensive guard on the football team. He lunges across the line in a posture that's more nearly prone than upright, and will drive his weight into his opponent using very short, very rapid, choppy strides. Note that the distance that can be covered by each of these men is directly proportional to their length of stride. Note also that the amount of force produced by each one is INVERSELY proportional to his length of stride. And furthermore, note that as more force is required, the farther behind the man is the arc of his stride.

**T**HESE same principles apply to our dogs. If we want a dog to cover great distance, then he must be slimly built, move with the longest possible stride, and the arc of stride should be balanced under his body. If we want the dog to exert great power, then he must shorten his stride and put the arc of the stride behind him, throwing his weight into the load. This same point can be illustrated by referring back to Figure 1A. In this figure we see the dog in between strides, nearly airborne, carried along only by his momentum. Now, if this dog were hitched to a heavy load, that momentum would be absorbed by the load and his forward progress would cease as soon as the rearward drive of the legs stopped. Our draft dog, then, must use short, quick steps to maintain continuous momentum, and must keep his feet behind him so that his body weight against the load helps to maintain a steady forward push. He will further that action by extending the neck and lowering the head to put his weight as far forward as possible.

Now, how do these principles get translated into specific requirements of conformation? The angular structure of the dog's hindquarters starts with

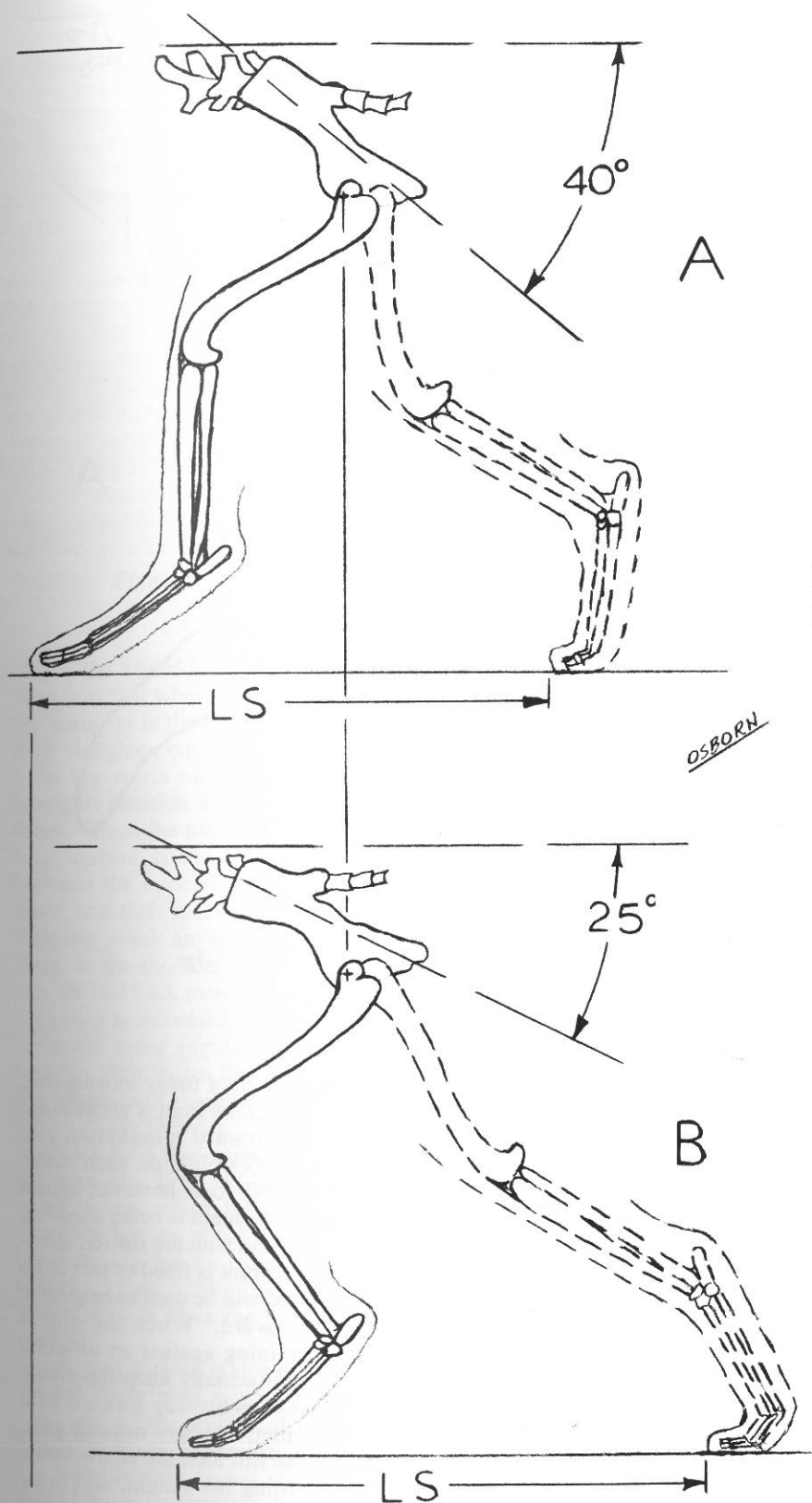


Figure 2. Shown here is the position of the stride with two different pelvic angles. In both A and B, the length of stride (LS) is the same, as is the arc transcribed by the femur relative to the pelvis. It is noted, however, that the flatter pelvis of B puts the arc of stride much further behind the dog.

the pelvis. Figure 2 illustrates this fact by comparing the arc of stride of the steeply set pelvis in Figure 2A, with the flatter pelvis of Figure 2B. The total arc of travel illustrated is the same for both, but the steeply set pelvis extends the forward arc of travel under the dog, and correspondingly limits the rearward arc of travel. The flatter pelvis of Figure 2B puts a greater part of the arc of travel behind the dog. To move with power, the dog must have good rear extension, and this is accomplished, in part, by a pelvis set at a moderately flat angle. The flatter pelvis also permits a longer upper thigh for a given degree of angulation, a fact which is useful in this case. The normally accepted pelvic angle for overall efficiency is about 30 degrees with respect to the horizontal.<sup>7</sup> However, this should be considered an upper limit for our draft dog, and an angle tending more towards 25 degrees would probably be in order.

**N**EXT of concern is the rear assembly in the upper thigh. This member is the most important in the entire assembly. Its arc of travel is the greatest component in determining the dog's length of stride, and the muscles that lie along it are more important than any other in providing forward drive.

Referring to Figure 3, it can be seen that in its more forward position, the hind leg is highly flexed. The dog must draw his body forward from this position by contracting the muscles behind the femur which are connected to the pelvis and the lower end of the femur. This pulls the pelvis forward and reduces the angle between the femur and the pelvis. The larger this angle is, the greater the mechanical disadvantage of the muscle, and the greater muscular effort that is required. The draft dog, under heavy load, will not reach as far forward as the dog shown in Figure 3, because he will not have sufficient muscular strength to overcome this highly flexed position. With the dog having moved to the more forward position of Figure 3, he is shown having drawn himself forward with the hind leg now behind him. As the angle between the femur and pelvis is reduced, the drive from the hind foot is more directly in line with the load (through the femur and pelvis), and now he is gaining further

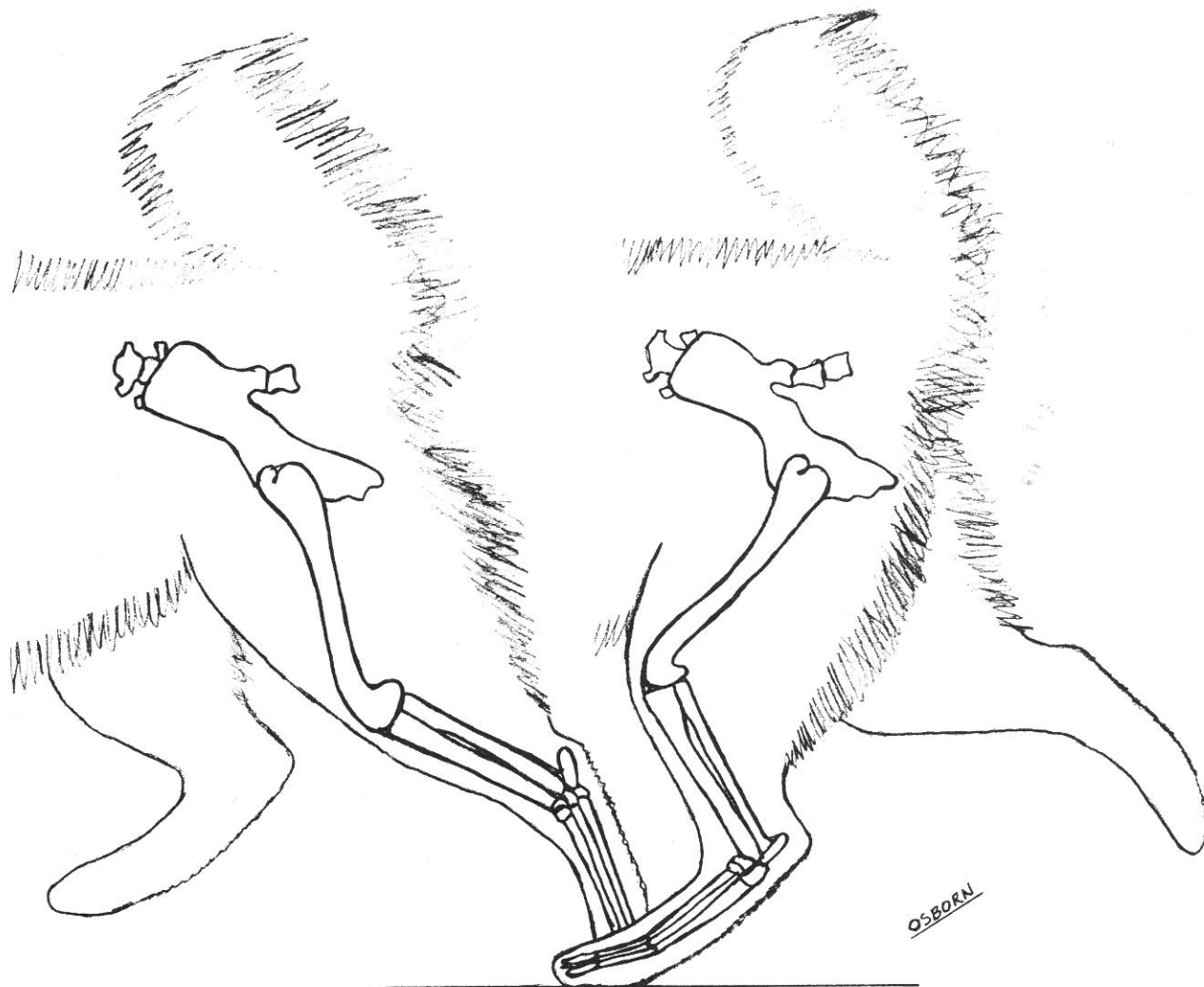


Figure 3. Illustrating the two extended positions of the rear leg.

movement by straightening the stifle and hock joints. The muscles that straighten these joints also work at a mechanical disadvantage which is increased by the flexed position of these joints. For all this, it can be seen that the dog's greatest thrust of power occurs just as the leg straightens – and this must occur behind the dog far enough that the power is transmitted in as straight a line as possible from the foot to the load. Obviously, this point should not be so far behind the dog that he has lost traction, but he will grip with his toes and allow his body line to drop to try to extend himself to this point of peak power.

**W**ITH moderate angulation and upper thigh as long as is practical, the bones below

the stifle joint must be shortened, and they must be shortened proportionately. The hock joint is activated by muscles lying along the lower thigh, and if these muscles are shortened too much, there will not be sufficient action in them to straighten the hock joint. Also, these muscles work at a mechanical disadvantage which increases with the length of the bones below the hock. Thus, by keeping the hock low to the ground, we can both insure that it can be straightened and decrease the strain on the activating muscles. The greater leverage of a high hock gives more speed, but the lower one increases strength and endurance. Figure 4 shows the general rear structure to a more highly angulated rear assembly.

The front assembly offers some contrasting considerations as compared

with the rear. In a freely moving dog, the main job of the front is to catch and direct the forward momentum and relift the dog's weight on each stride. Pulling a heavy load, however, almost all of the momentum is being absorbed by the load, and with the slower, shorter stride, the front is freed of part of its usual job and will be used to help drive the dog forward. When the dog is greatly straining against an ultimate load, he will actually keep the elbow flexed and claw his way forward with his front feet. At any normal gait, however, he will lock the elbow into a prop for lifting his weight, and draw his body forward using the muscles between the shoulder blade and upper arm to flex the shoulder joint, while at the same time the muscles tying to the front of the rib cage will contract to

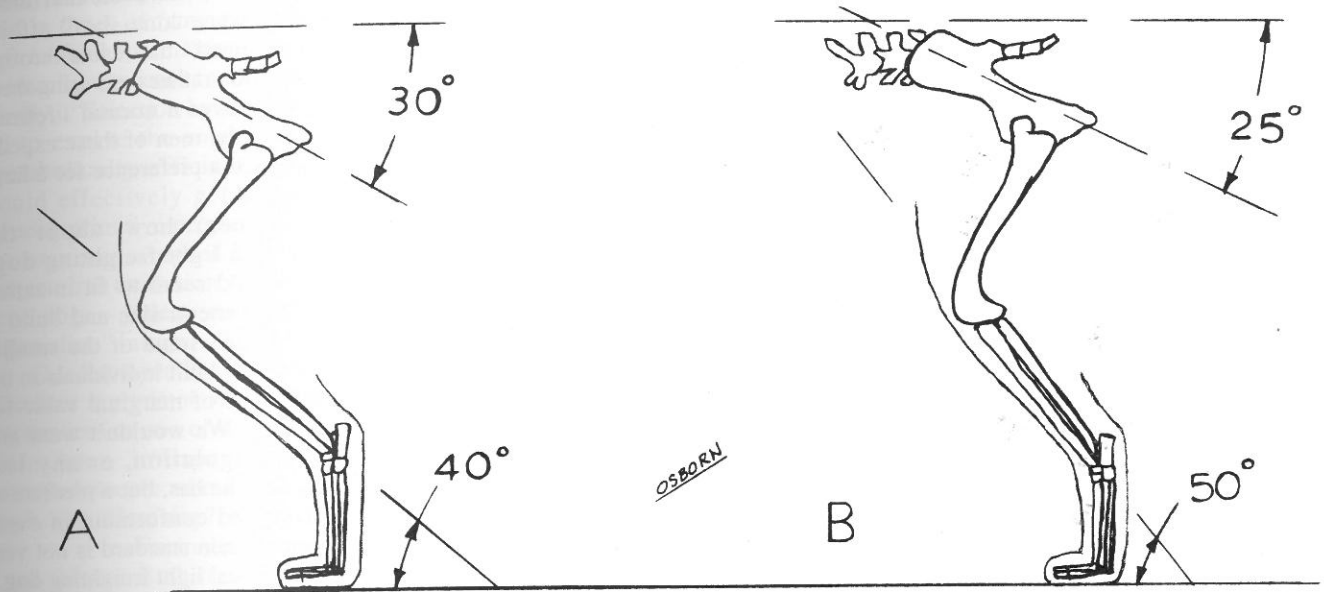


Figure 4. A heavily angulated rear is shown in (A) contrasted with a moderately angulated rear in (B).

rotate the shoulder blade forward. Note now that whereas the rear assembly starts out in the flexed position and must straighten out to exert thrust, the front leg starts out in the extended (straight) position and flexes to exert thrust. Thus, the main thrust from the front comes as the triceps contract between the upper arm and shoulder blade, and their mechanical advantage increases as this angle is made smaller. Thus, as the shoulder blade and upper arm are laid back more, the dog's driving power is increased. As these bones are made more angular in their relationship, their length increases, as does the length (and therefore strength) of the attaching muscles. Now, we normally ask for a well-angulated front for the sake of a long stride in quest of speed and endurance, but it is clear that these features are equally desirable on our draft dog, but for entirely different reasons. One of the rare instances where we can have the best of both worlds!

It goes without saying that the dog we are describing must have sound feet. All of the weight of this large animal is borne by the feet, and all of his considerable power starts at the front and is transmitted through the legs and body to the load. The hare foot, with its longer two central digits, is capable of a bit more traction, while the more compact (cat) foot is easier to

produce with consistent soundness and is less prone to injury. These differences are minor, however, and the most important thing is that the foot be made as large and thick and strong as possible.

That, then, pretty well completes the picture of the heavy freighting dog.

**T**HE same principles discussed in establishing the structure of the heavy freighting dog apply also to the light freighting dog and, indeed, to all dogs. They are all subject to the same laws of leverage and the same biological constraints and they all use the same manner of locomotion. For other tasks, however, we ask for a different set of performance characteristics and therefore we must make some trade-offs and compromises to achieve that different type of performance.

We have specified that a team of light freighting dogs be able to make 50 or more miles per day with a 400-pound load. With the speed required, the sled weight for each dog must not exceed his own body weight. That indicates a size of 40 to 60 pounds, so that a team of ten to twelve dogs of the 40-pound size could handle the 400-pound load, and seven or eight 60-pounders could do the same job. Whereas our heavy freighting dog works mostly at a walk, the lighter dog must work at a trot and be capable of

substantial speed, load and conditions permitting. This portends a dog that is not only smaller than the heavy freighting dog, but he is of lighter build and must have a comparatively longer stride. He is still a draft dog, however, and on no account should he be finely built or "rangy." The longer stride should come from slightly longer legs and increased rear angulation. To accommodate this longer stride without interference, he must have a little longer coupling. Overall, he should have a slightly compact, muscular body, with a deep chest and good rib spring. The leg length should be a bit more than half the total height, and the overall length of body should be slightly longer than the total height. In front, the well laid back shoulder and long, well-angulated upper arm are standard. The increased hindquarter angulation should come from slightly longer bones of the upper and lower thighs, but by no means must this be extreme. The actual degree of angulation should be somewhere in the middle of the two examples illustrated in Figure 4.

This conformation then should theoretically give us the desired balance of power, speed and ground covering ability that we seek in the light freighting dog.

The herd dog presents a rather different picture than either of the draft

dogs. He is required to propel only his own body weight, but must do so with great agility and considerable speed over long distances. Size is determined by the degree of speed required and the rough nature of the terrain to be traversed. A very small dog will not do, but a dog of the 20- to 22-inch height range would probably be entirely adequate providing he is equipped with good length of leg. The length of leg not only provides for facile movement over rough ground, but also extends the length of stride for endurance and provides the leverage of longer leg bones (and muscles) for good sprinting speed. The longer legs also provide the capability to bring the hindquarters up under the body for quick stops and turns.

**T**HE body should be finely drawn and "racy," but not without good depth of chest. In overall proportions, the depth of body should probably be about 40 percent of overall height with the elbows and stifles set somewhat below the body line. The body will have good length, but because of the length of leg, the overall proportions of length versus height will appear nearly square.

The well laid back shoulder and long upper arm are still the standard in front, and the hindquarters obviously require somewhat more angulation than either of the draft dogs. We should probably go back to the 30-degree pelvis for our herd dog, or even slightly steeper, because he requires more forward reach with the hindquarters. A somewhat longer hock is useful here, too, for greater speed, but because of the requirements for endurance, it should still be on the moderate side.

Throughout the analysis, the author has deliberately avoided any reference to specific breeds or standards, but in the case of the reindeer herd dog, nature has provided us with a model so perfect that the comparison is irresistible. The coyote. That's right, the much maligned coyote, *Canis Latrans*, is the perfect model for the dog we seek to herd reindeer. The typical adult coyote is about 21 to 23 inches tall, weighs about 25 to 35 pounds, and is virtually a carbon copy of the herd dog description offered above. Moreover, his performance is all we could ask for. He is, pound for

pound, one of the best trotters in nature, with an endurance over rough ground that is legendary. He is capable of sprinting speeds in excess of 40 mph<sup>6</sup> and is agile enough to dine regularly on the darting jackrabbit. It is not proposed that we try to domesticate the coyote, but rather to use him as an example of the performance, and therefore the conformation, that we want in the ideal herd dog.

We have now been through the analysis of three separate tasks – heavy freighting, light freighting, and reindeer herding – and have derived the requirements of conformation for the type of dog to provide optimum performance of each of those tasks. We have seen that each of these tasks imposes different requirements of performance (strength, speed, etc.) and these differences in performance require corresponding differences in size and conformation.

Now, where does our Samoyed fit into the picture? Which, if any, of these tasks could HE perform effectively? For purposes of comparison, let's briefly summarize the essentials of conformation of the Samoyed. The historical size range of the breed is 20 to 24 inches in height with corresponding working weights of 35 to 60 pounds. He has a body of medium length with a deep chest, well sprung ribs and strong loin. He is 55 percent leg, and somewhat longer than tall. He is (or should be) well muscled. The Samoyed should have a 45-degree shoulder in front with a long upper arm, and a well bent stifle and sharply defined hock in the rear.

It is apparent that the Samoyed is NOT a heavy freighting dog. Although the largest members of the breed do approach the height range of the heavy draft dog, the weight is at best twenty pounds short, indicating that his overall size and build is substantially lighter than required for this job. He has somewhat more leg and a higher degree of rear angulation that can be used effectively at the task of heavy freighting.

**S**OME might argue that the Samoyed, in his "finest hour," was used as a heavy freighting dog by some of the polar explorers and that survivors of these expeditions represent nearly 50 percent of the foundation stock of the modern breed. It

should be noted, however, that these expeditions were "one shot" affairs which "consumed" the teams through planned attrition rather than using them continuously over a normal lifetime. And, most of the men of these expeditions expressed a preference for a larger draft animal.

Well, then, how about the Samoyed as a light freighting dog? Here, he would seem to fit in rather nicely. The general size and build is proper, although some of the smaller and more finely built individuals in the breed might be of marginal value for this purpose. We wouldn't want any more rear angulation, or any less muscling than he has, but a medium or larger Samoyed conforming in every way to the written standard is not very far from the ideal light freighting dog.

The Samoyed as a reindeer herd dog? That's not so easy to answer. The general run of the breed is more heavily built – heavier by almost a factor of two than is required of the herd dog. However, it is not too difficult to imagine the smaller and more finely built members of the breed as being able to perform this job very effectively, even though their size and conformation is somewhat less than optimum for the task. On the other hand, the larger and more heavily built members of the breed had best stay out of reindeer herds. They'll wander too near a calf and wind up skewered on Momma's antlers! And why feed a 50-pound dog to do a job that would be better performed by a 25-pound one? Considering the breed on the whole, we would have to concede that he could probably do the job of herding reindeer, but that his performance and efficiency would certainly be less than optimum.

This entire analysis has been predicated on the idea of considering the OPTIMUM conformation required of each task, and there is good reason for this approach. There are, however, some qualifying factors that should be recalled. The arctic represents a harsh and bitter environment demanding a tenacious struggle for existence of all who live there. In this environment, dogs were kept by the natives because, and only because, they were essential to existence. The most valuable animal was the one who could be of the most use, most often, at the greatest variety of tasks. Food supplies were

rarely abundant and never dependable, and in times of famine, the dogs were left to fend for themselves – or even themselves became food for a starving family. “Selection by starvation” tended to evolve the smallest and most metabolically efficient animals that could effectively get the job done. Among primitive people, this scramble for existence weighed heavily against the natural evolution of special-purpose dogs – unless we consider them “specialists” in survival.

Our Samoyed is a survivor. He is therefore a predator and hunter – and his services at one or more tasks must have been indispensable to the Samoyed people who kept him. Sled dog? Yes. Herd dog? Maybe.

#### Footnotes

1. Moore, Ruth *et al.* “Evolution.”

Time, Inc., 1962. LC 62-20276, p. 86.

2. Lyon, McDowell. “The Dog in Action.” New York: Howell Book House Inc., 1968, fifth printing, p. 192.

3. Lyon, *op. cit.*, p. 114.

4. Halsey, William D. editor *et al.* “Collier’s Encyclopedia, Vol. 5. Crowell-Collier Publishing Company, 1962. LC 62-10819, p. 448.

5. Trevor-Battye, Aubyn. “Ice-Bound on Kolguev.” Archibald Constance and co-publishers. Great Britain, 1895.

6. Halsey, William D., *op. cit.*, Vol. 14, p. 320.

7. Smythe, R.H. “The Dog: Structure and Movement.” New York: Arco Publishing Co., Inc., 1970. LC 70-113948, p. 134. •

which was adopted in England in 1909, quote: “Colour, pure white; with slight lemon markings; brown and white; black and white. The pure white dogs come from the farthest north, and are most typical of the breed.” The English bred toward the white for preference. In 1900, Major F.G. Jackson had proposed that the “Typical Samoyede should be pure white and have a flesh-coloured nose,” quoted from “Every Man’s Book of the Dog” by A. Croxton Smith, published by Hodder and Stoughton, London, 1910. Additional quote from the source, “In formulating the standard, Kilbourn-Scott had not gone as far as that for they had many good dogs with a little lemon colour about the ears, and with black noses.” Actually, the black nose and dark eyes add greatly to the expression.

## 1977 Coat Color

Bob and Dolly Ward  
Calabasas, California

**D**ESPITE the color problem, the Samoyed is a Working Dog. We will address two subjects. One is that the Samoyed may not be all white, but varying shades of off-white, buff, lemon, to sparkling pure white. Color is most often around the ears, but sometimes in the body coat. Some even have a freckled nose! My WD at Tampa Bay, Florida did! The other subject is that the SAMOYED IS A WORKING DOG and regardless of his inherent beauty should not be confused with anything less than a SOUND, worthy WORKING DOG which definitely includes a proper temperament.

Chet Collier, a member of the Westminster KC, announces the breeds during the Westminster Groups. When it was called to his attention, Mr. Collier expressed a willingness to correct that portion of his comments on the Samoyed pertaining to color to adhere to the standard, rather than emphasizing that Samoyeds are all white.

From the New Revised official publication of the American Kennel Club, “The Complete Dog Book,” published by Howell Book House, New York, the following quote of that portion of the Samoyed Standard dealing with COLOR follows under “General Appearance (e) Color SAMOYEDS SHOULD BE PURE WHITE, WHITE AND BISCUIT, CREAM OR ALL BISCUIT.”

Under DISQUALIFICATIONS “ANY COLOR OTHER THAN PURE WHITE, CREAM, BISCUIT, OR WHITE AND BISCUIT. BLUE EYES.”

There is no room for misinterpretation, unless judges and breeders and readers stop at the first comma. There is always the possibility of PREFERENCE. Some owners, breeders, and even judges may PREFER one or the other variations of color in the Samoyed, but according to the standard for the breed, color includes, other than pure white, CREAM, BISCUIT or WHITE and BISCUIT. Any color other than those just named is a DISQUALIFICATION.

The first standard of the breed written by Ernest Kilbourn-Scott

**T**HE current English standard for the Samoyed says on color, “Colour: PURE WHITE, WHITE AND BISCUIT, CREAM.” The Australian standard follows the English exactly.

The official Canadian standard (July 1957) quotes: “Color: PURE WHITE, CREAM, BISCUIT, OR WHITE AND BISCUIT,” and under “Disqualifications: BLUE EYES, DEWCLAWS ON THE HIND LEGS, ANY COLOR OTHER THAN PURE WHITE, CREAM BISCUIT OR WHITE AND BISCUIT.”

The American standard for the Samoyed, under which we operate as breeders and judges, was submitted by the Samoyed Club of America and approved by the AKC April 9, 1963.

From “The Samoyed,” published by the Samoyed Association in England, 1961, I will quote a part that Hank Gutenstein pointed out as significant to this subject: “A description of Antarctic Buck from the Illustrated Kennel News for February 1902, ‘Antarctic Buck is a large dog standing 21 inches at the shoulders (other authorities say 22 inches) and 35 inches long from tip of muzzle to tip of his tail. His coat is absolutely pure white with the peculiar glistening characteristics of the breed. He has a heavy ruff and fine tail and also has the hair ‘round the toes characteristic of Arctic Dogs. The ears are thick and erect with rounded tips and are spread well apart, leaving a fine open forehead

which helps to give the Samoyedes their wonderfully intelligent expression ...” What is not mentioned is that Buck had light to flesh colored points. Indeed a very large number of our imports had them ... Among the eight or so strains Mrs. Kilbourn-Scott distinguished two main types: a tall, brilliantly white dog with light points, a cobbler cream and biscuit shaded dog with dense black points. Among these again she distinguished the bear, fox and wolf type, not to be taken literally, of course, but meaning with a look of wolf, fox or bear. The foxy type would appear to have lost its good points and to represent weakness now (remember this is 1909 to which we are referring), the wolfish and bear type predominate in the modern with a blend of these two as the ideal – the wolf type excelled in gait, though not so good in head as the bear type. It cannot be too often stressed (and Mrs. Kilbourn-Scott lost no opportunity of doing it) that it is MOST necessary to use cream and biscuit shaded, judiciously in breeding, both for stamina and to achieve and preserve those very same glinting white coats so much desired. The preference is for the snow-sheeny white dog, all other points being equal, but persistent penalizing of the cream and biscuit coat and all else but black points can have (and has had) a degenerating effect on the breed. Judges and exhibitors may think that they know heredity, know better than heredity, that they can overcome the long established deeply inherent factors in the breed, but they don't and can't. The

quicker everybody realizes that, the better it will be for the Samoyed breed and fancy.

Mr. Will Halley, *Our Dogs*, 1936, “The texture of the coat, so that even with the fulling of the undercoat absent, the hairs stick out, is only to be preserved by a judicious use of the coloured dog, whose coat is hardly ever soft and silky.” ... The Samoyed dog, as we know it, is natural in the sense that it is not the product of a blend of breeds, but it is, or ought to be, the product of controlled and selective breeding to preserve the most important points, which are those – never let it be forgotten – of a WORKING DOG whose beauty and rightness is a direct ratio to his powers of work and adaptation to climatic conditions. The strong body, the long, strong and tufted feet, the harsh, spiky, glistening outer coat with its dense cotton-wool undercoat, the thick ears with a comfy feel to them (one of the most important items in the beauty of the head) and the full graceful plume form a dazzling picture, it will be agreed, but each of these points helps insure the ability of the dog to live healthily and work strenuously in Arctic conditions. At all times, exaggerations, whether of size, body, length, breadth or length of head, are to be avoided. The Samoyed is a medium-sized, active dog, neither cobby nor wolfish in body, with ample, but not massive, bone. (“Bone heavy down to the ankle” is stigmatized by the Kilbourn-Scotts as absurd.)

In a judging report in 1920 by Mr. Leighton, quote, “I was not aware that

immaculate purity of whiteness in the coat was of more importance than stamina and strength of limb, loin, neck and power in the shoulder. The consistency of depth of coat receive my full attention, but I'm afraid that ornament and prettiness did not lure me from the consideration of bone, sinew and physical conformation.”

Le Comte de Savignac in his report on Crufts Show which he judged in 1936 declared, “The Samoyed being originally a working dog, its natural qualities of utility and type must be preserved before everything else,” but he goes on to say that he deferred to the wishes of English breeders by sacrificing very beautiful specimens that were coloured, this was honest but disastrous ... True white coats are desired by English breeders, but not at the expense of stamina and strength.

To repeat yet again, the wise breeder uses the coloured and shaded Samoyeds for strength and to maintain the glittering whiteness of the whites.

Volume 1 of “The Complete Pedigree Book of the American Champions from 1907-1971” shows, interestingly enough, on page 50, that Pedigree #311, Ch. Donerna's Barin (English), whelped 1920, was listed as WHITE WITH BISCUIT MARKINGS, and he went back to Antarctic Buck in just twelve years.

I believe the Samoyed fancy should ask and require in the show ring that the Samoyed should be judged NOT only as a dog of great beauty but fundamentally judged as a working dog. •

## Samoyed People

The Samoyed Quarterly  
Talks With  
**Jean Blank**  
**WHITECLIFF SAMOYEDS**  
San Francisco, California

*Jean Blank was born on St. Patrick's Day, Mary 17, 1904. She was actively engaged in showing and breeding Samoyeds from 1950 to 1964. Jean “made” five champions*

*before she and Percy Matheron became partners in “Whitecliff” Samoyeds. Percy's wife, Lena, conditioned the dogs.*

*Her first champion was Ch. Cheechaka of Whitecliff. Others of note include Ch. Yurok of Whitecliff (“Rocky”), Ch. Shoshone of Whitecliff (“Shonie”), Ch. Nakomis of Whitecliff (“Missy”), Ch. Sisiupuk of Whitecliff and Ch. Chumikan of Whitecliff.*

*Jean and Percy co-owned Ch. Yurok of Whitecliff, the top winning Samoyed of all time (Yurok was bred by Mary E. Breathehl). Yurok, or “Rocky,” won 201 BOB's, 32 Group 1's, and 5 Bests in Show. He was ranked Number 8 in 1958 and Number 3 in 1959 in the Working Group and was Number 8 dog, all breeds, in 1959. He was the only Samoyed to ever hold a placing in Top Ten Dogs*

(All Breeds). He was the only Samoyed recorded in "Top 400 Great Show Dogs in America," He was the winner of the Perpetual Stud Dog Trophy. Rocky was born in 1955 and died in 1970.

This interview was taped at Jean's home on October 29, 1976.

How did you ever acquire Ch. Shoshone of Whitecliff, "Shonie," back again?

We didn't have very many puppies, that wasn't my idea of this thing at all. And I was very careful where I placed them. I insisted on fenced yards and I insisted on a number of other things. But in this case, this man was a school teacher with a lumber company in the Northwest, way out. He explained to me that the dog could never get outside this area. I knew the puppy was going to be good. I could tell by the conformation. Well, as the dog grew up, they would see to it that he got into fights. In fact, he was so maladjusted when we first got him back, I couldn't show him at all, because he thought that a dog show was a big dog fight and he was ready to get in. I always insisted that if I had to take a dog back like this, I gave them their money back. In fact, I was pretty unpopular for awhile in the Samoyed Club because when I first got in it, I insisted on certain things that I thought were matters of principle, such as not guaranteeing a show dog for a show price and it not being so. And so I originated the idea that if they bought a show dog for a show dog and it didn't become a show dog, they got the difference back between what they paid and the pet price. This didn't set very well.

Would you like to know how I got my first Sam? My first champion was Chaka. I got him from Percy Matheron. I wanted to get another dog that looked something like a Husky or a ... I had heard of Sams, but I knew nothing about them. I never thought of owning one. But, my veterinarian down in Palo Alto sent me over to Los Gatos to call on Mary Breathehl, who was, as he told me, raising Samoyeds. I went over there and I took Charlie and Mary had her first champion present, and this great big dog climbed up beside Charlie and sat down alongside of him and Charlie just grabbed him around the neck. This big twelve-



Ch. Yurok of Whitecliffe with Jean Blank, wearing one of her famous squaw dresses, her trademark exhibiting in the ring.

year-old youngster burst into tears and that was that - we had to have a Sam. And that was what influenced my buying the first Sam.

I had become interested in the breed and Mary took me to my first

dog show at San Francisco. It looked easy. (laughter) Before you knew it, I was acquiring Sam puppies from here and there and everywhere. I had read in the paper, in the ads, that these people over in Lafayette had some pup-

pies. So I went over to see them and Lena was home, Lena Matheron, and I immediately knew that I wanted this big oversize dog. At this time, some of our more prominent breeders were showing little, cut-down Sams and they quarreled about the dog being over standard. To this day, the height is not a disqualification. This became such a hassle because this dog had one thing that most of the dogs in the ring didn't have - he had four good legs. And I thought that was a very good idea for a working dog to have four good legs. A lot of the dogs in the ring were suffering from hip dysplasia. A working dog has to have four legs. It was the first thing that judges noticed and would say, "Oh, my goodness, where did you get such a sound dog?" That was Chaka. He was also a showman like Yurok was. He loved to be admired. He was a lead dog and I have learned that in this breed not all of them are lead dogs. A natural lead dog is great, and this one was one.

I was impressed by their honesty because I had been around just enough up to this time to sense that sometimes people were not so honest about things. Lena sent me all kinds of messages about what to feed him and how to groom him and everything, all written out, and I followed all of these. I also knew something about dogs myself, a little bit. So I worked him fifteen minutes every day. I went on from that point and made him a champion. There were a lot of judges who were conditioned to the idea that this dog could be too big. I kept a little black book and every judge was listed in this little black book and what he did. So I started looking for a little dog who would appeal to the judges who didn't like the big dog. And that is how I got Ch. Chumikan (of Whitecliff).

Percy had come by a female, Carla II, an English dog. And Percy and Lena had Omak (the sire of Yurok). He was their first Sam. Percy bought Omak from Helene Spathold and Omak had been the runt of a litter. He was beautifully made in sort of a compact little way like this, which you will see from his pictures later on. But he was small. He was also so high strung that on a trip he never sat down or laid down. He just paced up and down the station wagon continually. He bred Omak and Carla and the first

two puppies he lost with disease. Chumikan was of the second breeding and he was small and fat, short of leg. I took these two dogs to learn about dog shows and handling on the Texas circuit at a time when the Texas circuit meant that you went around the perimeter of Texas. You drove one day and the next day you showed. We had thirteen shows in a month's time.

*How many years did this all go on?*

Twelve years. I felt that was a long time, because AKC has a rating. They say if you last ten years, you're an old-timer. But I enjoyed the showing. It was a challenge, no matter where I went. I had the time and the wheels, and furthermore, I wanted to see these other dogs. I became interested in the fact that there were different types. And this breed ... I didn't do anything for it, other than to bring it to the attention of judges. I think I did do that. The winning and losing I have seen has been very interesting and there are many things that I like to talk about rather than the standard. Such as showing your dog and not going in there as though you suspect the judge of anything, except looking at your dog. It's partly the showmanship of both the handler and the dog and the packaging of the dog, and this is why I started to wear squaw dresses when I started going down into the desert and into Yuma. These squaw dresses were very popular. I had a picture taken with Derek Rayne. He is a tall man and I am very short. So I would usually kneel down on one foot behind the dog and I had a suit skirt on. When the picture came out, my whole thigh was exposed. So what did my friendly competitors say? "Oh, that's how you win!" So it just seemed that I ought to have a big skirt or something like that, and these dresses were great. Then I found that by showing these white dogs in front of these colored squaw dresses, they made a beautiful background. I also learned to run in moccasins. When they make a pair of moccasins, they put them on and they stick their feet in water. Then, when the moccasin dries, it fits their foot beautifully. So I used all moccasins for running with the dogs. That made it possible for me to really run in the Group ring. And I kept up with the Shepherds and all these men running their dogs. Another

little dirty trick that this handler showed me was that the way to make a dog stand out in the show ring was not to put him next to the other white dogs in the ring, but put him between two big black dogs if possible. So we always went between a German Shepherd and any of the other big black dogs in the ring. And, of course, that made him stand out. I always shooed them away if they even came near me with their Pyrenees or anything else because I wanted to show this dog.

I was told, when I first got the dog, by the group that first got me started out in San Francisco, "You'll have to get a handler, you'll have to get a professional handler. You can't win unless you do, because the handlers go in there and they know all the judges." Well, that isn't true at all. If you could handle a dog, you could do more with your own Sam than any handler could, because the dog would do more for you. Sure, they knew the judges ... just like I knew the judges and the judges knew me or knew anybody who turns up all over with dogs. When I first got into this "racket," I noticed this mad rush to the entrance of the ring when the breed was called. They were all rushing to be the first one in the ring because the idea was that if you were the first one in the ring, the judge would see you. Well, I thought, I'm not going to enter this hassle. So I waited until everybody was in. I never went in first. After I first observed that, I always went in last.

*How did you happen to come along with your kennel name, "Whitecliff"?*

The first thing I noticed was that everybody had kennel names. I lived in Los Altos and Whitecliff was my telephone exchange.

I tried to have it registered. Well, I had made five champions before I formed a partnership with Percy, and these dogs were all named Whitecliff. The American Kennel Club would not register it because they had so many whites, and not just in our breed, they won't limit it to just one breed. I am sure that they protected me for years, because I had so many champions come along.

I went to my first club meeting and it was awful, it was worse than a dogfight, and I didn't want any part of it and resisted it for a long time. Then

I felt that well, I'll support the club and I'll take a membership, but I don't want any office and I turned it down.

*How many litters did you have?*

I didn't count them, keep track of them. All of our records were destroyed. Lena always wanted litters, but I didn't. I tried to limit the breeding. I always wanted to limit it to certain dogs, they had to be sound, the breeding had to be right.

People, in being blind to the faults of their own dogs, if they like a certain thing about a dog, the dog doesn't even have to have legs or it doesn't have to have a head, or whatever it is that they particularly admire, that's it. And Percy particularly liked a smiling dog. I had to teach him, actually, about hip dysplasia and to show it to him at ringside on dogs in various breeds to make him realize that this was important. Other people are only interested in coats, and if it's a heavy coat, they don't care what kind it is.

*What was your best litter?*

Not as a litter, really. What I did was to tell the breed, the breeders, that anybody who had a dog related or descendent from our dogs, they could use the name of Whitecliff. And there are countless number of dogs that are Whitecliff now. I suppose if you really wanted to be a great breeder you would study biology and genetics because it's in the second generation that the qualities apparently come through. They don't necessarily look like their parents. There may be a family resemblance, but they don't. They are apt to look like their uncle or their grandfather or their grandmother or so on, it is usually in the second generation that these traits come through. Shonie, in spite of all the problems, was the closest to the standard. Believe it or not, I finished him very quickly, in three months' time I finished the dog, because he had such quality and the judges were delighted because his head was far superior to Yurok's or anybody else's we had had before. It was a magnificent head. But no, there was no one litter that was greater than any other, regardless of what you may hear.

*You mention that Rocky was poisoned ...*

Well, I was down in the southland at a show and the dog was winning a great deal. He became violently ill on

the bench and he was taken immediately off the bench, excused by the superintendent and taken to a veterinarian. And the veterinarian said he had been poisoned and he pumped his stomach and the dog laid on his side all the way back to Walnut Creek. He had been poisoned. And whether he got that poison, where he got it, we don't know. The article in Western Kennel World explains the whole thing, because there was such a fuss that I wrote a letter, and it deals with the whole story.

*How many champions were in the litters that you bred?*

Well, I made sixteen, but there were many more; I mean, all of these champions descendent from Yurok and Shonie. Shonie has had an incredible number. I haven't got the exact number, but I have been amazed.

*Jean, who would you consider the best dog you ever bred, or ever owned?*

That is an unfair question to an individual dog because to the standard, Shonie was the best dog to the standard that we ever had in a litter of puppies.

But Yurok was one of the greatest show dogs that has ever lived. He is the only dog to have ever made Great American Dogs, the only Samoyed. And he is the only Samoyed to have made the Top Ten for several years in a row and he got down as close as being third in the Top Ten, or eighth in the Top Ten and third in the Groups. Half the time that he was going strong, some of the greatest dogs in our history, in our time, were going, like the Pekingese and the dog that Harry handled, the Boxer, and Bang Away, a famous dog. The time that we took that Long Beach show, we had the pleasure of beating every single top dog in the United States. And that was a great thrill. We went on to Best in Show.

I would help these kids learn how to show. In other words, loose lead. They either hold the dog up and choke him to death and have no control and the dog doesn't understand what they are doing at all. So I always preached loose lead. No one is perfect, and when you are running or gaiting with a dog at a certain pace, if you have him on a tight lead and you have any peculiar thing go wrong with your gait,

you'll make the dog do it. So loose lead and keep him on the mat so he doesn't slip.

*What do you think of inbreeding, linebreeding and outcrossing, and when should each be used?*

I don't believe in inbreeding. It is true that you can get a magnification of the good points, but you can also get a magnification of the bad points. I don't think that the regular dog owner or even the more successful kennel breeder is qualified to measure exactly. I don't believe in it for that reason. Linebreeding, I think that we tested that because of the cattle breeding, which we also studied. I studied it and I got Percy to do it, too. Where they take like a half brother and a half sister, with outbreeding on the other two sides, and found that worked very well.

*What do you consider inbreeding?*

Father to daughter and mother to son, sister to brother, and so on. That is definite, true inbreeding according to the medical profession.

*Would you breed to a dog with a very serious fault if he had outstanding points?*

Well, if that dog could read and write and give me a written guarantee that he would only pass the outstanding points, I might consider him.

*Should Samoyeds be special and does making the Top Ten mean anything?*

It certainly did to Percy - I have never seen such happy people in my life.

*Could you give any specific advice to owners who would like to show their own Samoyeds?*

I would suggest that if they want to handle their own dogs they should, first of all, go to dog shows and watch handlers and watch the breed being judged and what goes up and what doesn't. A Samoyed, a well moving Samoyed, is a graceful dog, and if the person is not physically able to show the dog to the dog's advantage, they shouldn't try. They can have a good dog and they can ruin it. If you are going to have your dog shown by somebody else, you have to condition them with the idea that you can be somewhere adjacent to the ring and not have them want to get to you. •

# The Work Purpose of the Breed

Patricia M. McNab  
Zion, Illinois

**M**Y premise, based on authoritative Samoyed history, will delight neither the advocates of the Samoyed as a sled dog nor, perhaps, the few (the very few) who conceive of the Samoyed as strictly a herd dog. Or perhaps you have already noticed that the Samoyed, by standard, by appearance, and by history, is neither.

Historically, the Samoyed served both functions. It would be fatuous to postulate distinct breeds of Samoyeds, one bred exclusively as a herd dog, and another bred solely as a sled dog. There is no reason to believe that a primitive, wandering people could, or did, do so.

The Samoyed, according to the various general charts on the descent of dogs often on public display at the larger dog shows (see, for example, the Gaines Dog Chart) indicate that Samoyed dogs were an early branch of the prototype dog, and although some breeds descended by way of the Samoyed, the Samoyed itself neither came through the wolf, the fox, or any other breed.

The Samoyed dog, undoubtedly, was a "natural" arctic breed, suited by thousands of years of adaptation to survival in the bitter dry cold, and by body size to a subsistence diet. The wedge head, the heavily furred ears which can be tucked back flat into the ruff, the almond eyes which squint, and do not bulge, the hare feet, profusely furred, with pads comprised of dense, flat hollow hairs rather than "glove leather" (although a number of modern day Samoyeds lack this feature), the long bushy tail which uncurls to screen the nose and mouth of the recumbent dog against the bitter subarctic night air, and, of course, the double, waterproof coat and the natural protective coloration are all Arctic survival features.

The Samoyeds perhaps "found" their dog in the Arctic, and utilized it for their cultural needs. The people that were called "Samoyed" by the world actually were at least four distinct population groups (the Nenets,

Enets, Nagansan and Selkup), existing as a recognizable people in history since at least 3000 BC. There are descriptions of Samoyeds visiting in the Chinese Wei-Lie (about 200 BC), which fit the Nagansan with their peculiar round-bottomed mukluk which left tracks like hoofs, having neither heel nor toe.<sup>1</sup>

The most northerly people were the most numerous of the Samoyed groups, these being the Tundra Yurak (Nenets) and Tundra Enets. They were located on the Arctic Tundra, from the European continent northward to the Arctic Ocean, southward to the forest line, and westward to the Yenesei River of northwestern Russia. These Tundra Yurak (Nenets) and Enets were akin to the Lapps of Norway, and like them had a complete reindeer economy.<sup>2</sup> They herded as many as 2,000 to 20,000 reindeer, wintering them southward to the edge of the tree line and summering them in great drives across the tundra to the edge of the North and Russian Seas along the Arctic coastline, and even swimming them to islands north of the Arctic seacoast. Their dogs were reindeer herders.<sup>3</sup>

They were "house dogs," these reindeer herders, the Samoyed's most valuable possession, for without the dog, the herds could not be kept in numbers sufficient to support their communal life-style. As the herds grazed, the dwellings were moved. Dogs not with the herds slept in the tents of the people, and in the most bitter weather were used like an extra blanket (your one-dog, two-dog or three-dog nights were real cool!). The Samoyed's coat, which dropped off in spring, could be twisted into yarn right off the dog, or could be utilized as wadding for muklucs, or used to make warm felt garments which were lightweight. Those pups which failed to develop quickly into efficient herding and guard dogs, or were injured or aged, contributed to the cook pot, their hides used as decorative edging to inner garments. There was no room for useless sentiment in the subarctic.<sup>4</sup>

The herding Samoyed led a more active life than the herding Collie, since reindeer were considerably larger and more active than sheep. The dog

kept the herd together and protected it from predators, as well as defending the home tents of its tribe from strangers. Samoyed dogs work instinctively as a team with their fellows, and the polar explorer Jackson discovered that several Samoyed dogs were sufficient to hold off a polar bear (then a numerous Arctic predator), long enough for the hunter to escape or kill it.

The tundra herd dog also had to have the herd dog's intelligent, alert, watchful temperament, learning to herd merely by imitation of other herd dogs, and was voice trainable. Unlike the southern sled dog, which was used to physical restraint, physically driven or guided and trained to haul, as any sled dog is anywhere, the tundra herd dog would obey a human whistle or signal from as far as it could be heard. Both temperaments persist in the Samoyed breed today ... the hardheaded, stubborn dog which takes nine years to get its CD and will not obey once it is off lead and out of reach, and the eager, voice-controlled, fast worker which gets its CD in three successive shows and cannot bear a shouted command.

**L**IKE the Lapps, the northern Samoyed people used reindeer hides for tents and outer clothing, bones for weapons and household utensils, stomachs as food containers, sinews for sewing, the meat smoked and stored, the milk and blood their drink, even the velveted antlers were stewed and eaten. The reindeer also served as draft animals. In some areas, they were ridden. The sleds of the Samoyed people were distinct of construction and infinite of variety, there being a different sled for every nuance of purpose. From one to six reindeer were hitched side by side, fan fashion, according to the load. The lead reindeer was always on the left, and the Samoyed always sat with his legs on the left side of the sled. "Dogs were very seldom used, and then only in certain areas, as draft animals."<sup>5</sup> None but the southern Nagansan and the Ostiak (Selkup) used the dog regularly in such a manner; the Forest Enets, Nenets and northern Nagansan occasionally, and the Tundra Yurak

(Nenets) and Enets, never.

THE next largest of the northern Samoyed groups were forest dwellers, the Forest Enets, or Yenesei. They lived in the forest zone south of the Tundra, but were still primarily arctic in nature. They kept smaller herds of reindeer for family use (20 to 35), and in addition, hunted, fished and trapped, living off the land. In the summer, they either turned their small herds of reindeer loose to forage for themselves and breed with the wild reindeer, or sent them northward with the returning Tundra Samoyeds' herds of thousands to summer along the edge of the Arctic seacoast. This freed the forest Samoyeds to hunt and fish and smoke game for the coming winter. These people also used reindeer for draft hauling, but they moved camp infrequently, with the seasons for fishing or hunting. Their dogs carried packs, accompanied them on hunts, and doubtless occasionally would pull hunting sleds. The sleds of the Samoyed people were so constructed and light that they were used both summer and winter, sliding over the semi-thawed squishy earth surface as readily as over snow.<sup>6</sup>

The Nagansan lived in the northernmost parts of the Soviet Union on the Taymyr Peninsula and along the Taymyr river valley, in a manner somewhat similar to the forest Samoyeds. The Nagansan, however, primarily hunted and trapped reindeer, using dogs to do so. They did not turn to reindeer husbandry until the nineteenth century.<sup>7</sup>

The smallest group of Samoyed peoples were the Ostiak (or Selkups), the Kamas (who are defunct as a people) and the southern Nagansan. These peoples did not breed reindeer, but hunted them, and used dogs for hauling. They lived in movable or fixed wooden structures, and pursued limited agriculture, trapping and trading.<sup>8</sup>

Although Samoyed dogs were not widely used for sled work in their homeland, the sled function of the Samoyed has received the lion's share of publicity because of the glamour of the polar expeditions, and sledding activities in our own country. Sledding is fun!

One hundred twenty to two hundred trained Samoyed and Ostiak sled dogs were gathered at one time for a

single expedition. These dogs, according to photographs of the various expeditions, were often multicolored, white and black, as well as the all white version.<sup>9</sup> These were already trained sled dogs, which in the homeland, and on the expeditions, were generally staked out or ran in packs and had the opportunity at home, and on shipboard, to interbreed with other types of Russian or Ostiak dogs because of their proximity.<sup>10</sup> Even so, in general outline, if not in color, these expedition sled dogs are substantially similar in appearance to the Samoyed depicted in the original breed standard, a standard derived from careful, thorough exploratory breedings, as will be described.

The Samoyed of the expedition, and of the tundra, was NOT a large dog, nor was it an optimum sled dog. Its virtue lay in its great strength, its remarkable endurance, and its need for astonishingly little food when compared to dogs of different type or breed or size. Indeed, for this reason, its small size (18 to 20 inches and 40 pounds) was a virtue! These Samoyeds, wrote Shackleton in "The Heart of the Arctic," could pull loads of 80 pounds per dog and average a distance of 40 miles per day let go at their own pace.

DESPITE their numbers and contribution, few but the fittest (and luckiest) expedition dogs survived to be bred from. Of the 120 dogs of the Luigi Amadeo expedition to the North Pole in 1898, two males, Houdin and Russ, were afterwards returned to England and bred from. Most often, those which survived the horrors of the expedition were killed, or abandoned, for want of space or food for the return trip, as Nansen did in his expedition to the North Pole in 1893-1894 ("The Voyage of the Fram"). However, the seven surviving Samoyeds of the Jackson-Harmsworth expedition to the North Pole in 1894 were brought back to England and used in establishing foundations for the breed. Jackson himself was president of the Samoyed Association when it was first constituted.<sup>11</sup>

So many Samoyeds were left along the route to and from the South Pole in the islands around Australia and New Zealand that the inhabitants had to kill many of the dogs in order to have enough food for the rest. Most

often the white dogs were spared, or taken into homes because of their unusual appearance. The Newnes-Borchgrevnic Expedition to the South Pole in the ship "The Southern Cross" had 90 dogs, the remainder of which were left on Stewart Island in New Zealand. Most were euthanatized, but the white dogs were spared. The best-known dog of this expedition was Antarctic Buck, born in 1901, who was found in a Sydney, Australia zoo, purchased and brought back by ship to England to the Kilbourn-Scott kennel. This great dog sired only two litters before expiring of distemper, for which there was then no remedy. One of these two litters was out of the ivory white bitch "Ayesha," who was considered of the purest unmixed blood, having come from the island of Nova Zembla north of the Arctic coastline, extremely isolated. She had black points and chocolate eyes. Buck himself was described as a large dog (21 inches) with strong bone, a very white coat and light points. Out of their mating came some of the most famous champions and widely used foundation dogs of the Samoyed breed. Ayesha is considered the most important bitch influence of the breed.<sup>13</sup>

The Yenesei area Samoyeds were frequently collected for expeditions, and were imported into England and the U.S., the latter to increase height and bone. These dogs were from the Yenesei River area of Russia, and were of larger, more heavily boned appearance, with drop or flop ears which proved extremely dominant. "The Samoyed" (England, 1961, page 10) describes Mrs. Gray-Landsberg's surprise when her newly imported Yenesei Samoyed, Yougor of Halfway (as he was later called) had flop ears, unlike other Samoyeds previously imported by breeders from Russia.<sup>14</sup> The dog collector is reported as saying that they are all like that in Yenesei. Mrs. Gray-Landsberg's kennel was thereafter called "Halfway," purportedly in honor of the appearance of this dog's ears. Many famous champions were bred by Mrs. Gray-Landsberg, and later importations of the Yenesei Samoyeds to the U.S. caused a thorough mixing of the drop-ear inheritance into the mainstream of the Samoyed breed, where it remains to haunt breeders to this day.

**T**HE early English importers of breeding animals, unlike collectors of dogs for expeditions who took almost any trained sled dog, considered Samoyed dogs from the northernmost tundra (the Tundra Yarak/Nanets) as the "only true" Samoyeds. These were restricted geographically to the tundras of northeastern European Russia and the western Urals. Not only white, and ivory, but brown (biscuit) Samoyeds were acquired with great difficulty from these people. The earliest acquisition was the dark biscuit bitch "Sabarka" pictured on page 33 of "The Samoyed" (England, 1971).

The Kilbourn-Scotts collected and bred some eight Samoyed types, and when they were convinced they had produced all the types of Samoyeds the breed was capable of, they compiled the Samoyed breed standard, which has remained substantially unchanged to this day. All of these different variations of type were categorized by Mrs. Kilbourn-Scott as "wolf" – taller very white dogs with light points – and "bear" – stockily built cream and biscuit colored dogs with thickly furred pads and ears and black points. A third type, the "fox" – small, bushy, pointy-headed and slight boned – was discarded as showing weakness. These dogs all shared certain basic characteristics, which the Kilbourn-Scotts described in the Standard of the Breed.<sup>15</sup>

And yes, they used the black and white dogs for breeding. The standard, until 1920, specifically allowed black and white coloration, when it was then altered to eliminate it, due to the rapid disappearance of that color from the Samoyed population.

In the Samoyed Standard, as in history, truth does not lie at one extreme or another of sled type or herding type dogs, but somewhere in the middle ground, upon which the versatile Samoyed dog lived and died. The Samoyed of the tundras in 1894 IS the Samoyed of today. He is shown on page 35 of "The Samoyed" (England, 1971). This dog was then, and is now, eminently suitable to portray the ideal Samoyed of the standard, and to serve as a monument to the Samoyed people. This dog actually worked. And he could work and win today! We should take pride that we, almost alone of all dog breeds, today have a dog indistinguishable from the untouched, natural

working Samoyed of 5,000 years ago. I wouldn't change a thing!

#### Footnotes

1. "Samoyed Peoples & Languages" by Dr. Peter Hajdu, 2nd Ed. Rev. 1963 (Pub. by Indiana University, Bloomington; Moulon & Co., The Hague, The Netherlands), p. 43. Since this book will be heavily drawn on, particularly Ch. 4 (Samoyed Customs), a word about this book is in order. It is not just another book. It is Volume 14 of Indiana University Publications authorized series on Uralic & Altaic Languages. It incorporates over 15 other works in Finnish, Russian, German, Swedish, Hungarian and English, including all the official USSR documentation of the Samoyed peoples. It is also a doctoral thesis, which means that the heads of each of the departments examined every reference and item for accuracy and authentication. It is probably the only English language book of its kind.

2. "American Heritage Dictionary of the English Language," p. 1148 (pub. by Houghton Mifflin Co., 1971) seems to agree. Definition (1) of the word "Samoyed" is given as describing the Ural-Altaic people dwelling in the tundra of the northeastern European Soviet Union and northwestern Siberia; (2) describes the language as that of the Uralic family spoken by four living groups of Samoyed peoples; (3) describes the dog as having a thick white coat. Derivation of the

word "Samoyed" itself is indicated as from the Lapp words "Same-Aednama" meaning "Of Lapland."

3. "Samoyed Peoples & Languages," *ibid.*, pp. 10-11.

4. "The Samoyed." England: 1971 (pub. by The Samoyed Association of Great Britain, c/o The Kennel Club, Picadilly, London W1Y 8AB), pp. 14-15.

5. "Samoyed Peoples & Languages," *ibid.*, p. 16.

6. "Samoyed Peoples & Languages," *ibid.*, pp. 11-13.

7. "Samoyed Peoples & Languages," *ibid.*, pp. 17-19.

8. "Samoyed Peoples & Languages," *ibid.*, pp. 22-24.

9. "The Samoyed – New Zealand," 2nd Ed. by Pearl M. Wilson and Valerie E.P. Auckram, pp. 208-209, p. 213; see also "The Samoyed," *ibid.*, p. 21.

10. "The Samoyed," *ibid.*, pp. 20-21. Most of Nansen's dogs were Ostiak and Greenland Husky, which accounts for their heavier weight.

11. "The Samoyed," *ibid.*, pp. 20-24.

12. "The Samoyed – New Zealand," *ibid.*, pp. 28-29.

13. "The Samoyed," *ibid.*, p. 40; see also "Hutchinson's Dog Encyclopedia," p. 1575.

14. "The Samoyed," *ibid.*, p. 39.

15. "The Samoyed," *ibid.*, pp. 23-25. •

## Food for Thought

Phoebe Faulmann

**T**HE terms "bear" and "wolf" have come to be a very popular way some folks have of describing the different "extremes" we now have within the breed. Unfortunately, some of us have a misconception of these terms and their use. Previously, "bear" and "wolf" were used as illustrations to demonstrate extreme faults, the "bear" being used for a coarse, overdone Samoyed, the "wolf" for other

extremes. These illustrations were used to help the breeder/fancier visualize an animal somewhere between the two, a sort of happy medium, not one possessing features so dominant as to resemble either term. Nowhere in the standard (illustrated or otherwise) is it implied that either term is correct, preferred or near the ideal for a Samoyed.

It makes me shiver to hear a fellow Sam exhibitor state, "Oh, look at that lovely bear head!" Here is someone commenting on a faulty head and at the same time implying that it is cor-

rect. First of all, does the dog really have a "bear" head? Some people don't really know just what a bear looks like. Possibly the dog they are commenting on doesn't really look like a bear at all. Most likely, the real faults with this head are far less than if it really were shaped like a bear. Bears have two-piece heads, nothing close to a wedge. So why use this term to describe a head (or body) that is even near the standard? You are really doing that dog an injustice.

The term "wolf" is used to denote a snipey dog. In reality, wolves are not snipey. This cannot be an accurate description, so why use it?

I own several dogs and I don't feel that any particular one of them is either a bear or wolf. I prefer to think of them as Sams. Each one of them does have a somewhat different look, but I think it is due to the lack of one thing or too much of another. I wish more people would take the time to study terms used in describing other breeds of dogs, then maybe we could describe our own breed with something better than "bear" and "wolf." There is so much more to our lovely breed than simply "bear" or "wolf."

It seems to me that the continuing use of these terms has brought about a change in the shape our breed has taken. True, this categorizing and lumping dogs possessing more or less the same characteristics into two distinct groups does help to keep the two extremes separate in the mind, but both terms are extremes and imply extreme faults. More and more novices have been led to believe by some "breeders" that the "bear" type is correct and preferred. The novice sees these "breeders" receive placement after placement and they come to the decision that "bear" is where it's at, and this forms the basis of their "ideal" Samoyed. Those particular "breeders" do well in the show ring because they groom well, handle well, and train their dogs to be real showmen. They carefully select their entries and even have judges they prefer to show under. These "breeders" are not true breeders in the real sense of the word; they are only exhibitors, no matter how many litters they have produced.

**B**REEDING for extremes is acceptable as long as the extremes are within the stan-

dard. Choosing a particular stud and bitch and breeding to obtain qualities in the pups that you consider to be your personal preference is fine, as long as the qualities that you prefer follow the guidelines set within the standard.

The novices of today are tomorrow's breeders. It will be their responsibility to breed a dog that will resemble the ancestors that brought us all to love the breed so dearly. But even the breeders (exhibitors) of today cannot accept the breed as it has been for so many years, and they continue to breed for more of this, and much more of that, until the original Sam has been lost. Maybe those breeders should just change breeds. Possibly a Pyrenees or

Chow would be more up their alley. Selective breeding is for the purpose of improving, not rearranging until the original has been lost.

Since our standard isn't divided into varieties, it must be remembered that there is only one correct type within our breed. Consider this: are you breeding and showing to better the breed, or are you out to win at any cost? If so, the Samoyed breed will pay the price.

It would seem that so much emphasis has been put on breeding the "type that will win" that someday very soon we might be using the terms "bear" and "wolf" to describe temperaments and, unfortunately, it will be correct. •

## A "Natural" or "Created" Breed?

*Bob and Dolly Ward  
Calabasas, California*

**A** most often asked question is, "What type of dog exists in that area or that country?" Having judged the Samoyed breed for 22 years and in the number of over 3,000 to date, my conclusion is that there is one basic type of Samoyed. This is based upon the fact that my assignments have covered dogs in England, Ireland, New Zealand, Australia, Hawaii, Alaska, Canada and most of the states in the lower 48.

The difference seems to be always by the breeders linebreeding and inbreeding within sections of their country or states. There are breeders in every breed as well as our own that try to stamp or emphasize a characteristic that they admire. No matter what size the standard of their country stipulates, all countries have all sizes of both dogs and bitches. In England, there were at least seven male champions over 23 inches tall and their top winning bitch champions were often 22 and 22 1/2 inches tall. Of course, there were excellent ones within their standard of 20 to 22 inches for males and 18 to 20 inches for bitches. Cana-

da even has a disqualification for males and bitches over the same size standard as the English, but there are innumerable ones that violate this rule and complete championships under Canadian judges.

Please do not take this as meaning that I advocate larger dogs but merely the fact they exist, and with proper balance, type and quality, all superior exhibits can and will make championships regardless of size. For one to believe that one area or country has all large or small dogs is to be an ostrich or a horse with blinders. Neither does any area have all large, long coats. Every conceivable type of coat exists in all areas. Again it depends on the breeding program and preferences of the breeders - not the dogs.

One difference to be noted is the English owner's attitude towards SAMOYED TYPE. Much more concern is placed upon preserving the correct eye, ear, head and a pretty dog. This is perhaps due to more English breeder-judges with much experience. England does not have hundreds of judges without any Samoyed experience judging their dogs. Their breeder-judges outnumber ours five to one, and they do not have one quarter of our registrations. What is wrong with

the Americans?

Disregarding what we believe to be types within our breed, all owners have common concerns about the breed. All areas and all countries agree upon the fact that no one wants large round eyes, cowhocks, fiddle fronts, broad or narrow fronts, snap tails, soft coats or hip dysplasia. All areas and countries are worried about oversized and undersized dogs. It is interesting that England and Australia believe that all American dogs are "giant" and that Americans believe other countries have "midgets." The

truth is that if 50 from each country were in the same ring, you could not separate them except by a few kennel lines with intensive linebreeding behind them.

I have learned that there are good Samoyeds in all areas, that there prevails an original strong type of Samoyed that all the "whim" breeding cannot suppress, that the standard typey, agile, friendly Samoyed exists in all areas. There is much misconception of what other countries, as well as our own, possess in a "type" of Sam-a-yed. •

and producing puppies, I was a breeder, am a breeder, for sixteen years. I have produced 148 puppies in 32 litters. So you can see they were small litters.

*Do you have any particular litters that you look upon with fondness, or of which you are especially proud?*

I think so. I think that anyone who has produced a litter out of Ch. Honey and Ch. Maur Mik's Kim, where there were six puppies and four of these are champions, two Group winners, one a number one dog in the country, and Best in Show winner and compiled the record that Ch. Bopper has compiled, would have to be very proud of that particular litter.

As far as outstanding individuals, I think my Ch. Stutz will always be my most outstanding, because he was my first homebred champion. I campaigned him to a championship myself. And, he had a temperament that was just unbeatable. He was known for his sweet temperament. And, even later on, when he was with Sally Éterroux out in Colorado, her main comment of him was, "He is such a sweet dog." I think that's come through in so many of the offspring, grand-offspring, great-grand-offspring and so on.

*Did you stick to linebreeding in your program?*

There again, we are going to touch on something that is, has been in the past, controversial. The Sammy world as a whole is kind of coming around to the same thinking now. I have always had a theory that there was absolutely no such thing as an outcross in Sams because of the fact that there was only a handful that were brought to this country originally. They all come down out of that, out of those half dozen or so. Some of the imports that were brought in later were from the same kennels, from the same stock. There were only so many dogs brought out of Siberia. So, in my opinion, there *cannot* be an outcross in the Sam breed.

Actually, years ago I was accused of outcrossing. Whereas actually, I was never outcrossing. My first champion produce, who was Stutz of Baerstone, was out of a line that had, I believe, Ch. Snow Chief of the Arctic in his pedigree. I think it was ... ten times in eleven generations. But, I'd have to check that to be sure.

## Samoyed People

The Samoyed Quarterly  
Talks With  
**Jean Baer**  
**BAERSTONE**  
Martinton, Illinois

*This interview was taped at the home of Jean Baer during the summer of 1977 by John and Kathy Ronald.*

*Jean, how did you get started in Samoyeds, and why did you pick Samoyeds?*

I've had dogs all my life, and it's quite a lengthy story about how I got into Sams. I actually met my husband through a Sammy and he won me by way of his dog, who happened to be a gorgeous Sammy. That was Stutz I, unregistered. And, when he was killed by a train some years later, my husband acquired one for me. That was my first Sammy, and just a pet, never used for breeding or anything like that. But I did a lot of learning with that dog.

*How many litters have you bred, and did you have any long range breeding plans when you got started?*

When I got started, I didn't have many plans of any kind. Just that first litter. One doesn't look beyond that. Everyone looks forward to that first litter and you don't really think beyond that. It's an exciting thought, planning it, waiting for it, and will you get to keep one, will your husband let



*Ch. Baerstone's Kasija  
with Jean Baer.*

you keep one? That sort of thing.

As far as long range, I got into that much later. So, in actual breeding



*What about inbreeding?*

Yes, I do inbreeding, not incest breeding.

*What do you consider incest breeding; where do you draw the line?*

Incest to me is mother to son, father to daughter, littermates, and that close. Close linebreeding, which I am known to do – this is half brother to sister – has produced some fine animals. But no closer than that.

*Have you tried to breed toward a particular type of dog and have you achieved that standard?*

Well, yes. We all have a goal. We all have our mind's eye picture of the perfect Sam, as we interpret the standard. And yes, I have always liked a pretty dog. I have always liked a typical "bear" type, which is another controversial word. But in my ads, I'm calling it "Baer type" now. Yes, the goals have been reached to a point.

There is a refinement to be done. That is, of course, other goals.

*Specifically, where?*

A lengthening of leg, maintaining and retaining coat. Structure, head. I would like to improve the movement, and most definitely fronts. Sammies are notorious for bad fronts. It has gotten to the point that the judges just ignore the fronts on the Sam anymore. If you've got a good rear, you've got a good dog.

*As a breeder, are there any particular dogs or particular moments that stand out in your memory?*

There are always the exciting moments of watching a youngster grow up and make his mark in the show ring, and in the breed. There is the excitement of the phone call after the shows, like when Bopper won his Best in Show, and I can assure you that the roof was raised on this house.

The moments of Kopi's victories, his Group I, his many offspring and their championships.

Then, the moment of acquiring Honey back, Ch. Honey Baerstone of Gro-Wil, when I had sold her as a puppy and being able to get her back as an adult after she had produced a lovely litter including Ch. Babe, Ch. Honey Babe of Gro-Wil, number one winning bitch in the country for '68 and '70, multi Group placing winner. Then, taking Honey myself to a Group 2 in Dubuque, Iowa. That was a big thrill.

Acquiring the other daughter, Sonnet, dam of Kopi, who was a lovely producer and just a fabulous brood, with a big coat. She was a big bitch with a loving disposition.

Then we'll backtrack for a moment to Ch. Babe, who I was honored to handle at a couple of shows to a Group 3 and Group 4. That was a thrill. This was before, of course, I had acquired her later on.

*Let's get into structure and breed characteristics, such as coat, pigment, movement, etc., and what emphasis you place on each.*

Every Sam should have them. (laughter)

But seriously, I feel a dog should have a good head. I don't like an anteater type of head, nor too Chow a head. The standard calls for a good wedge, with good breadth and depth. And, I've seen some Sams that lacked many things, including these.

Pigmentation – Sammies have to have pigmentation, otherwise they border on the albino. I know a lot of people who write requesting puppies with no biscuit. In my experience, I've found that biscuit will keep mosquitos away. The darker the pigment on the dog, the less you will find mosquitos buzzing, which is an important factor today with our health problem with the heartworm thing. The biscuit, of course, points to good black pigmentation, and this is the factor that I have found that does keep mosquitos away.

It would be interesting at this time to refer to the American Kennel Club's scale of points for the total Sammy as described in the 1961 edition of the "All Breed Dog Book" published by them.

The general appearance on the scale of points was set as 20 out of

100. The head, 15; coat, 10; size, 10; chest and ribs, 10; hindquarters, which is interesting, because this includes the movement, points to movement, is only 10; the back, 10; feet are only 5; legs are only 5; tail is only 5 – for a total of 100 points.

The general appearance, of course, is depicting what the eye sees, how pleasing it is to the eye. The whole picture, or type. This gets down to your and my interpretation of type, according to the standard. Everyone has their own idea of type and there are as many types as there are breeders in the country, I do believe.

I've already elaborated on head, which I feel is a must. Head on a scale, of course, gets fifteen points. Next in line is coat. Let's touch on that just a little bit. I do have good coats, yes.

An interesting thing happened to me a few years ago. I had a man visit who was a Russian. He had not been in this country too long. You could understand him, yes. He came to see my dogs because he had had a Sammy in Russia. He guided a river boat and the dog was with him all the time. So, of course, I was very proud to be able to show him my dogs with their gorgeous coats. He took one look and hit me below the belt. "Where's your coat," he said. His dog had a coat that would measure twelve to fifteen inches around the ruff, each guard hair, was the description he gave me. Needless to say, I was put in my place very quickly.

He had related a story to me which I found interesting. When he was guiding the river boat, the Germans were patrolling. He was forced to jump overboard in the winter time. He made his way to shore not knowing whether his Sam had followed him or not. He gets to shore and makes it to a cabin and he was literally stiff and freezing. They got inside, the dog shook out and was bone dry. He was wet to the skin and nearly frozen. This I find interesting, because there are some breeders and exhibitors who are nonplussed with the heavier coats of the Midwest dogs, saying simply that too much coat, the dogs get snow-bound in the wild and freeze to death. Let me point out here that dogs that are in the wilds – and it has always been so – are not bathed as our Ameri-



*Ch. Honey Baerstone of Gro-Wil.*

can show dogs are. IF they were, they would not have the waxy buildup on their coats which does resist snow and ice. They cannot freeze to death, their coat cannot even get wet down to the skin.

All right, let's go to movement next. A dog should move light and free, be well balanced. The key here, I think, is balance. AKC in their point scale gives the hindquarters ten points, they give the legs five points, they give the feet five points. I think there is possibly an injustice here. I think size could be tabled down to something less than ten points in importance with more importance being placed in the structure of the limbs that propel the animal.

Getting into size, I think it is a matter of preference. Type is of the utmost importance, and should be considered over size. Your movement, of course, structure, etc., fall in line.

*Would you breed to a dog with a bad fault if he had other outstanding qualities? Are there any faults you would not breed to under any circumstances?*

There are faults that we breed to all the time since there is no such thing as a perfect dog. Yes, we do breed to

faults. Serious faults have to fall in their own category, be assessed according to their deviation from the standard. Yes, there are serious faults I would not breed to: lameness, hip dysplasia, PRA, a very untypey, untypical Sammy.

*Do you feel that people with a confirmed dysplasia or PRA carrier should continue to show their dogs?*

If they don't evidence this in the individuals themselves, and if the owners find pleasure in showing and exhibiting their dogs. This is for the most part what the people have the dogs for in the first place, to have pleasure from them. Not everyone who owns a Sammy is a breeder. And, there are many who buy dogs strictly for the pleasure of owning and showing that dog, and yes, I feel that they are entitled to show.

*Has the incidence of hip dysplasia in the Samoyed had much effect on your breeding program?*

It has had an effect in that it has kept me on my toes these sixteen years. My very first Sam, the pet, was in fact x-rayed clear. I was one of the early promoters, shall we say, of OFA. Having early contact with Dr. Riser, who had been screening X-rays for a



*Ch. Bopper El Toro of Baerstone, BIS Winner.*

while, he sent me the information pertaining to the organized group which is now called OFA, which letter, of course, I sent to Peggy Borcharding for publication in the Bulletin. Subsequently, we have gone from a small handful of enthusiasts to something over 3,000 dogs, and this I find very rewarding, as there were rumors flying way back then that we wouldn't even have 50 dogs clear OFA. It would only be the studs, and that was to promote stud service, etc.

*What about PRA?*

I am obviously aware of it. I think I know what to look for. My dogs have not been checked for PRA. From the earliest dogs that I've owned I have not yet had one walk into a brick wall or become disoriented in the dark, or walk into a wire fence, until one that was given to me a year ago, and recently I have noticed her doing this. Fortunately, she has not been bred, or produced anything and subsequently, will not. I am very

happy to say, she is not my breeding.

I am a proponent of the PRA program to eradicate it from the breed, of course. I have been able to keep close contact with my earliest dogs and I've never found it necessary to even question their vision, let alone put them through a test for the PRA. If it ever came to doing this, of course I would. I just have not found it necessary. As I said, I have done a lot of inbreeding and linebreeding, sticking very closely to my own line, which I know is clear. And, this is one of the reasons I do it in fact.

*Do you feel having a dog in the Top Ten means anything? Do you see any value in campaigning a dog after its championship?*

Having a dog in the Top Ten, of course, is quite an honor. The dog earns it; you earn it. It's a thrill, naturally, because it is a national thing. Campaigning a special, if it is a good one, yes. There are many dogs, champions, who are not worthy to be cam-

paigning as a special. They win on glamour points of the moment that they outgrow. Or, other minor faults turn into greater ones as they mature out to where they are not really worthy to compete in the Working Group. And, that is where it's at.

To campaign a special, you have to keep your eye on the Working Group, because you win breed and then go to compete against the working breeds, and yes, it is a great thrill to have a good Sam in the Working Group, and be in there on a consistent basis. Yes, it is a challenge.

*Does having a handler give you an edge?*

At times, yes, more so now than in years past. Because there are so many more dogs and so many good ones in the working breeds. Economically, in the long run, yes, very much so. It's advantageous to have a handler. But, a good handler for a Sammy is hard to come by. They are few and far between. Not all handlers like Sammies.

*How many dogs have you kept in your kennel at one time, and do you believe in keeping adult Sams together in the same run?*

The answer to the first question is 30 - 16 of my own. The answer to the second question is no. I do not run my dogs together except in the exercise yard, where they run and play. Kenneling them together only leads to misunderstandings between individuals, loss of coat, scar tissue, etc.

*Is there any other subject you'd like to cover?*

There is a subject I would like to touch on. There has been so much play on breeder responsibility, buyer responsibility. How about ethics of the breeder? This is something that has been a sore subject with me for quite a long while. For years, in fact. The integrity, the honesty of a breeder, on a breeder-to-breeder basis. If you wanted to use, for example, a stud from another line, owned by another breeder, you would want specific data, honest facts, and it is very hard to get these days. It has been for quite some time. I would like to see more of this honesty. Total and complete honesty among breeders is the backbone of the breed. Where that goes, so goes the breed. Now, we have to ask ourselves, is the breed going downhill? •

## SQ Centerfold

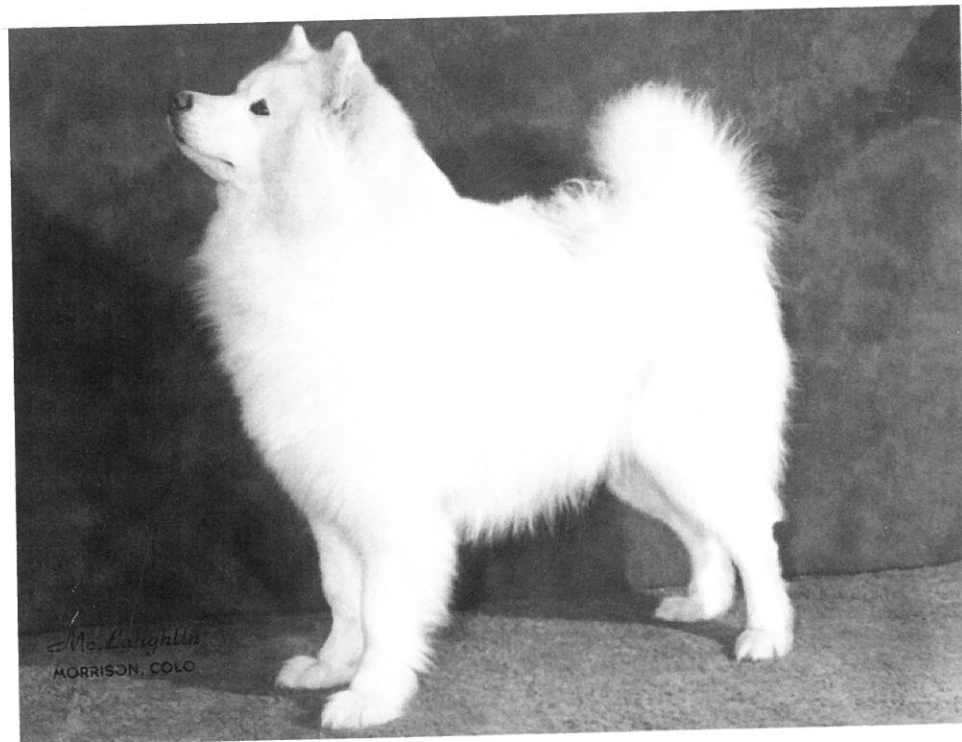
### Ch. Nachalnik of Drayalene

1961 - 1975

Breeders: Mr. and Mrs. Walter Zimmerman Owners: Harold and Doris McLaughlin

Ch. Yurok of Whitecliff  
Ch. Rokandi of Drayalene  
Ch. Silver Crest's Sikandi

White Frost's Tybo  
Drayalene's Clarisse  
Ch. White Way's Juliet O'Snowridge



**C**H. Nachalnik of Drayalene, "Chief," is the top producing Samoyed in the history of the breed. The following notes on Chief are by his owners, Harold and Doris McLaughlin.

Chief was purchased at seven months of age from Helene Spathold, a Samoyed AKC judge from California. Chief was the stud service puppy by her Ch. Rokandi of Drayalene and out of Drayalene's Clarisse.

Chief was Helene's last and, according to her, the best of her years of breeding. She passed away shortly after shipping Chief to Silveracres.

Before Chief, Helene had found us a top quality bitch, Cnejinka. Her eye for top quality Samoyeds must have been good, as Ch. Cnejinka produced nine champions from her total of fifteen puppies.

Chief was never a "hot shot" in the ring. He made his championship

in sixteen shows. He had two Group placements from the classes. He was only speialed once. Even when he was being shown, he was a better producer than a winner. His first champion son, Zamaraski, finished before he did.

Chief's record as of November 1976 is 44 champions. This includes 35 AKC champions, 7 Canadian champions and 2 Mexican champions. With 48 more of his get pointed, he will have many more champions before his record tops out, and it is not likely that this record will ever be broken.

To set the record straight on how often Chief was used at stud at Silveracres, here are the facts. Chief was bred to 52 females, including those owned by Silveracres. This produced a total of 281 puppies. At last count, 128 of those had their OFA number. So Chief was not only a great producer

of champions, he was a great producer of clear champions. Chief's stud fee was always kept low so that we could choose quality bitches for him. No one ever paid over \$150 to breed their bitch to him.

Chief was the Top Producer (Samoyed Club of America) for the years 1969, 1970, 1973 and 1974. His son, Ch. Kondako's Dancing Bear, was the Top Producer for 1972 and 1975.

On the winning side, Chief's daughter, Am/Can Ch. Kipperic Kandu of Suruka Orr CD is the top winning Samoyed bitch in the history of the breed, with two all-breed Bests in Show and one Specialty Best in Show.

Chief had an outstanding temperament and was dominant for it. He was one of the great ones. •

# The Nutritional Requirements of the Samoyed

Jim Osborn  
Northridge, California

**T**HAT there are as many different ways to feed a dog as there are owners is axiomatic — and we could probably extend that to say that there are as many different formulas for weaning puppies as there are breeders. The new puppy owner or novice breeder, however, needs some background knowledge and a point of departure for developing his own feeding routines, and it is the intent of this article to provide that background and starting point.

Although the primary intent here is to discuss the feeding of the pregnant or lactating bitch and her puppies, this can be done in detail only in the context of the overall feeding plan, and therefore some discussion of the basic nutritional requirements of the dog is in order. Feeding the brood bitch, or weaning puppies, involves variations of the basic maintenance diet of the adult dog, so this will be the starting point.

The National Research Council<sup>1</sup> has provided a generally accepted breakdown of the nutrient requirements of dogs. This information is sometimes expressed as requirements per pound of body weight of the dog, but a more useable form of the data is to express the requirements per pound of food, and then feed any given animal enough to maintain proper weight and condition. These nutrient requirements are so expressed in Table 1.

The easiest and most common way to provide the proper balance of nutrients is to use good quality commercially prepared dog food. Any given brand of food will provide (on the package or from the manufacturer at your request) a breakdown of the nutritional content as well as the ingredients. If the nutrient contents are a reasonable approximation of the requirements of Table 1, then no other supplementation is required. If some ingredient is missing or in poor proportion, then some supplementation is required. It should be noted that many nutrients are available from a variety of food sources and that some of these are more digestible and usable by the

dog than are others. Therefore, an evaluation of the ingredients is sometimes important in comparing different brands or different types of food. Collins<sup>2</sup> gives a number of simple, but effective, procedures for evaluating various types of commercial dog food, but one of the commonest and easiest is to note the size and texture of the dog's stool. My own experience has indicated enormous differences in the quantity and texture of the dog's stools resulting from the feeding of different brands of kibble. The owner should obviously prefer the brand(s) that produce the smallest, firmest stools in his dogs, as that indicates the food is being thoroughly digested and assimilated.

**H**AVING addressed the question of what to feed, the next concern is, how much? The answer quite simply is — enough to maintain the dog at a healthy body weight. Individual dogs vary widely in their level of exercise and metabolic efficiency, and additional variations are imposed by age and climate. My personal belief is that the arctic dogs in general, and the Samoyeds in particular, have a significantly greater metabolic efficiency than the species average. The National Research Council<sup>1</sup> has published rough guides as to the calorie requirements of various sized dogs, and for a 50-pound dog their figure is about 31 kcal per pound of body weight per day to maintain an adult dog, with about double this amount required for growing puppies. Our experience has indicated a rather different figure, with 16 to 22 kcal per pound of body weight per day required to maintain our mature dogs, and about 20 to 28 kcal per pound per day required for "young adults" (one to two years of age).

The two largest variables in determining a dog's food requirements are probably climate and level of exercise. Collins<sup>2</sup> notes that a dog sleeping outside in the northern states in the winter may require as much as 90 percent more food for maintenance as the same dog maintained in summer (or in a mild climate). This same author notes that up to a four times increase above the basic maintenance diet may

be required for a dog under continually heavy physical stress.

Obviously there is no simple formula for determining how much to feed, and it is strictly a matter for the owner, by cut-and-try, to determine what the requirements are to maintain each dog at an optimum weight.

To transform the nutritional requirements into an actual diet, I will discuss briefly our own feeding practices, which are probably quite similar to many other fanciers'. Our mature dogs are fed a basic maintenance diet consisting of kibble, a fresh frozen meat product and cottage cheese, with a small amount of other fat added. The meat product we use is formulated for dogs and contains beef by-products with vegetable and mineral additives to form a fairly well balanced food. It contains about 37 percent dry matter and runs about 40 kcal per ounce of food. The kibble is a nationally known brand that contains an excellent balance of nutrients and runs about 100 kcal per ounce. The cottage cheese which we use is actually the "out-of-date" cheese from the markets which is sold to the pet food manufacturers and repackaged as a low-cost pet food. It will not be available in all geographical areas, but many fanciers make arrangements with their local market or dairy to obtain out-of-date cheese to be used as dog food.

The basic daily maintenance diet for our adult dogs is, then, as follows:

4-6 ounces fresh frozen meat product (served raw)

2 ounces cottage cheese

3/4 to 2 1/2 cups kibble (1 cup = 4 ounces by weight) as required to maintain weight

1/2 to 1 tablespoon corn oil, bacon grease or pork lard

The fat is added principally to increase the intake of fatty acids for skin and coat condition, and these are not available from beef tallow. A number of commercial products are available for this purpose. The majority of these are based on wheat germ oil and are quite good, but also quite expensive. We also feed an occasional "treat" of small quantities of liver. It might be noted that eggs (cooked) are an excellent source of fresh protein and may be substituted freely in place

TABLE 1  
Nutrient Requirements of Dogs<sup>1</sup>  
(In percentage or amount per pound of food)

Nutrient	On a dry basis	Dry-type dog food	Canned or wet mixtures
	%	%	%
Dry Matter	100.0	91.0	28.0
Protein	22.0	20.0	6.7
Carbohydrate(max.)	71.5	65.0	20.0
Fat	5.5	5.0	1.5
Calcium	1.1	1.0	0.3
Phosphorus	0.9	0.8	0.24
Potassium	0.9	0.8	0.24
Sod Chloride	1.5	1.4	0.43
Magnesium	0.05	0.04	0.014
	Mg per lb of feed	Mg per lb of feed	Mg per lb of feed
Iron	26.0	24.0	7.0
Copper	3.3	3.0	1.0
Cobalt	1.1	1.0	0.3
Manganese	2.2	2.0	0.6
Zinc	2.2	2.0	0.6
Iodine	0.7	0.6	0.2
Vitamin A	0.7 <sup>2</sup>	0.6 <sup>2</sup>	0.18 <sup>2</sup>
Vitamin D	120.0	120.00	40.0
Vitamin E (growth)	22.0 <sup>3</sup>	20.0 <sup>3</sup>	6.0 <sup>3</sup>
Vitamin B <sub>12</sub>	0.01	0.01	0.003
Folic acid	0.08	0.07	0.02
Thiamine	0.33	0.3	0.10
Riboflavin	0.98	0.8	0.24
Pyridoxine	0.44	0.4	0.12
Pantothenic acid	0.99	0.9	0.3
Niacin	4.8	4.4	1.3
Choline	550.0	500.0	150.0

<sup>1</sup>The values shown are based upon dry and canned foods containing 91 and 28 per cent dry matter. Moisture has been included to indicate general level of composition rather than as a requirement. There is no evidence that carbohydrate as such is required, but since it occurs as a part of many dog-food ingredients, a maximum value has been suggested.

<sup>2</sup>The 0.6 and 0.18 mg quantity of crystalline vitamin A is equal to 2000 and 600 IU, respectively. One mg vitamin A alcohol = 3,333 IU of vitamin A. One mg beta carotene = 1,667 IU of vitamin-A activity. For dogs carotene is approximately one-half as valuable as vitamin-A alcohol.

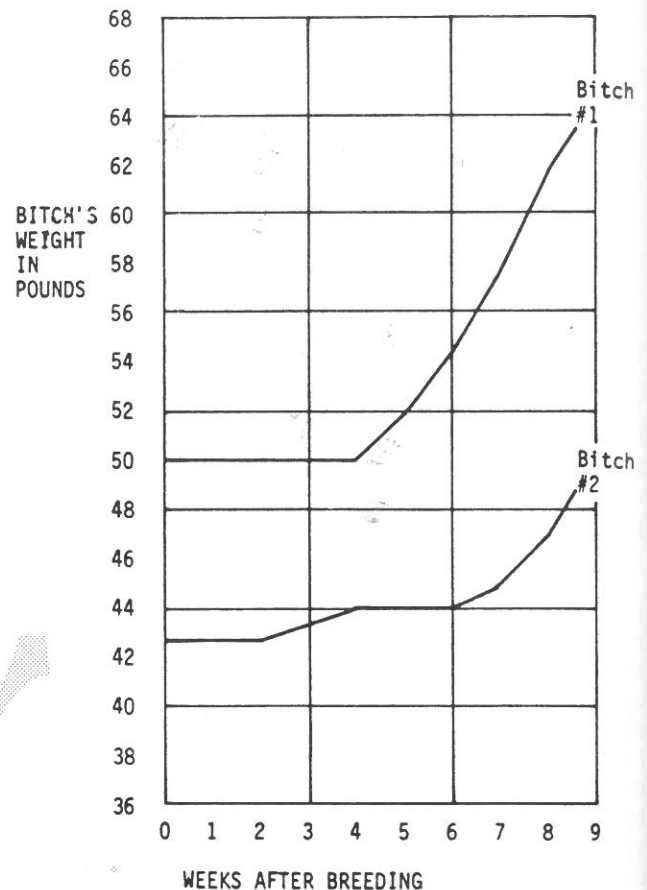
<sup>3</sup>As alpha tocopherol.

of meat products. *Raw egg white*, however, will create a biotin deficiency and should never be fed.

The nutritional requirements for the pregnant or lactating bitch and

milligram per pound of body weight, and about the same amount would seem appropriate for the adult breeding animal. The problem with supplying vitamin E is that it is oil soluble

Figure 1. PREGNANCY WEIGHT CHART



Bitch No. 1 whelped five puppies with a total birth weight of 81 ounces, while bitch No. 2 whelped only two puppies with a total birth weight of 31 ounces.

growing puppies do not differ drastically from the normal mature dog, except for quantity - basically they just need more of the same. There are some minor differences, however. Vitamin E is known to be required by growing puppies and is apparently related to some of the reproductive functions of the adult dog. For growing puppies, the daily requirement is about one

and can be destroyed if the fat in the diet is in any way rancid. To overcome this problem, our own practice is to supply the vitamin E in the form of water soluble tablets which are crushed into powder and mixed with the food at mealtime. These tablets are available at health food stores, and about 50 milligrams per dog is a reasonable amount.

It is also generally accepted that the growing puppy needs a somewhat higher proportion of vitamins A and D and the important minerals calcium and phosphorous than does the adult dog. These are probably best supplied as multivitamin and mineral supplements. It should be noted that the ratio of calcium to phosphorous is quite important, and a calcium supplement by itself is not wise. Our own practice is to use a balanced multivitamin supplement and to also use bone meal as the source of mineral supplements. Moderation is called for, however, in the use of all such supplements as, in some cases, an excess can

be toxic and can actually result in "vitamin poisoning." In this regard, the "coat conditioners" frequently contain vitamin additives (usually A, D and E) and the use of these is ill-advised if other vitamin supplements are provided in the diet.

**A** comment on vitamin C is also in order. The authorities generally believe that the dog manufactures his own vitamin C and its inclusion in the diet is therefore unnecessary. It has always been our practice, however, to provide a small amount of vitamin C in the diet of growing puppies. This is purchased also from the health food stores, as ascorbic acid in powdered crystal form, and like the vitamin E, mixed with the puppies' food at mealtime. About 25 to 50 milligrams per day per puppy is entirely adequate.

Against this background, then, what sort of feeding plan is appropriate for the brood bitch and her puppies? To begin with, in between litters, the bitch should be kept on the normal adult maintenance diet with only the addition of the vitamin E as previously noted. Her weight should be kept steady at an optimum point (not fat), and she should get sufficient exercise to maintain good muscle tone. If the bitch's weight or muscle tone go off, she should be conditioned for at least three months prior to breeding. Hip X-rays, worming and DHL boosters should all be done well in advance of the breeding date, and no systemic drugs should be administered during pregnancy or lactation, except in the case of a dire emergency. If this is all carried out properly, no other additives or changes in diet are recommended during the first month of pregnancy.

We have twice experienced the situation of breeding a maiden bitch, and having her immediately cut down her exercise and start acting very "matronly." If this occurs, a small reduction in food intake to maintain her weight is in order.

The bitch's weight should remain essentially constant for the first four weeks of pregnancy, and a small (one to two pound) increase is typically noted at the end of the fifth week. This increase is principally due to water retention, but it is at this point that the diet can be increased slightly. Fox<sup>3</sup> has noted that the greatest

weight gains of the bitch are in the last trimester of pregnancy and gives a typical weight chart for another breed. Fox also notes that the bitch's nutritional requirements are almost doubled at that point in time. A pregnancy weight chart for two of our own bitches is shown in Figure 1. In this figure, bitch number one shows the typical weight increase at the end of the fifth week and a steady and dramatic increase thereafter. Bitch number 2, however, does not show a measurable weight increase until the end of the seventh week. In that case, we held off on any increase in food until the weight gain had been noted, and then fed the bitch in the anticipation of a numerically small litter. This turned out to be the case, and our reduced feeding prevented the bitch from getting fat during her pregnancy.

Our typical feeding plan for a pregnant bitch is as follows:

At the end of the fifth week, we give, in addition to the basic maintenance diet, a half cup extra kibble, a half tablespoon of bone meal and a half teaspoon vitamin supplement daily. (Vitamin supplements vary widely in their concentrations, and the one we use is not heavily concentrated.) This is continued for about ten days, and at the end of six and a half weeks of pregnancy, another increase is made, identical to the first. At the end of the seventh week of pregnancy, we add another half cup of kibble and one to two ounces of extra meat to the daily diet. (Total increase = one and a half cups kibble, one to two ounces of meat, one tablespoon bone meal, and one teaspoon of vitamin supplement.)

Some bitches will develop a distaste for specific foods (cottage cheese, for example), and their appetite may vary during the late stages of pregnancy. Also, some bitches will go off food entirely several days before whelping, while others may eat a full meal just a few hours before giving birth. There is little you can do but cater to the bitch's whims, but try to insure that dietary balance is maintained insofar as possible.

At the time of whelping, we prepare a milk mixture in the proportion of one cup of milk, to one egg yolk, to one teaspoon of honey. This is mixed in a blender, and a cup or so offered to the bitch at the completion of whelping, and with each meal during lacta-

tion.

Appetite variations may be encountered for a few days after whelping, but the breeder should encourage the bitch to take in a sufficiency of calories to keep up her milk production. For the first few days of lactation, the bitch's diet should be the same as the last week of pregnancy, except for the addition of two to three cups of the milk mixture. If the bitch does not like the milk mixture (very unusual), or if the milk disagrees with her or causes diarrhea, then discontinue the milk, but add one and a half teaspoons of bone meal and an additional half teaspoon of vitamin supplement.

About four to seven days after whelping, the bitch's appetite should increase sharply. Increase the meat, cheese and kibble as required, but the increase should not exceed four to six ounces of meat and cheese, and one to one and a half cups of kibble. Bone meal can be increased by one teaspoon daily and the vitamin supplement can be increased by a half teaspoon. The total increase at this point, above the maintenance diet, would be four to six ounces of meat and cheese, two and a half to three cups of kibble, one and a half tablespoons of bone meal, one and a half teaspoons of vitamin supplement, and two to three cups of the milk mixture. Feeding three times daily during lactation is recommended because of the increase in total consumption.

All the foregoing presumes a "normal" sized litter of five to seven puppies. For more or less than this, scale the diet up or down slightly in accordance with the litter size and the bitch's appetite and condition. As the puppies are weaned, the bitch should gradually be returned to the normal maintenance diet as a part of weaning.

**W**EANING the puppies sometimes seems like a big mystery to the first-time breeder, but if approached methodically, it is entirely routine. The dam should provide all of the puppies' nutrition for the first two and a half weeks and will provide most of the caloric intake for about the first month. The pups should be entirely weaned by about seven to eight weeks. We prefer to let the dam do the final weaning herself, but she can be assisted by increasing the solid food to the puppies and cut-

Bitch  
#1  
Bitch  
#2  
9

birth  
ed only  
ounces.

fat in the  
To over-  
practice is  
e form of  
nich are  
ixed with  
se tablets  
tores, and  
is a rea-

cepted that  
somewhat  
s A and D  
s calcium  
the adult  
t supplied  
al supple-  
d that the  
horous is  
m supple-

Our own  
multivita-  
use bone  
al supple-  
l for, how-  
h supple-  
excess can

ting down the bitch's food intake in a timely manner which will reduce her milk supply. It is recommended that this be accomplished on a gradual schedule as follows:

At about five weeks after whelping, cut the bitch's kibble by one cup. At six weeks after whelping, eliminate the extra meat, cheese and milk from the bitch's diet and cut the kibble by a half cup. From six to eight weeks after whelping, gradually return the bitch to the normal maintenance diet. An extra half teaspoon of bone meal and a half teaspoon of vitamin supplement can be continued for two or three weeks to help replenish the mineral reserves in the bitch's system.

Waiting too long to get the pups started on solid food is a common error, and if the breeder waits much beyond three weeks of age, the typical Samoyed brood bitch will take over the job herself by regurgitating her own food for the pups. Starting the pups off on milk and cereal is another common error that generally results in diarrhea and causes the pups to be slow in acclimating to solid food. Our own practice is to start the pups on solid food at about 17 days of age. They should be started on the schedule that the breeder plans to maintain for them (three meals a day is recommended). The raw meat is the first food given and should be just a taste — perhaps a quarter of a teaspoon licked from the fingers. After two days of this, increase the meat to a half teaspoon per meal, and try to get them to take it, one at a time, from a saucer or shallow bowl. At 21 and 22 days of

age, give them about one teaspoon each of meat at each meal, and then at 23 and 24 days, add a half teaspoon of cottage cheese and mix with the meat. At 25 and 26 days, double the food to two teaspoons of meat and one teaspoon cottage cheese per meal. At 27 and 28 days, mix one teaspoon of ground kibble with the meat and cheese. Continue increasing the total intake every other day thereafter, and gradually increase the proportion of kibble.

**U**P to about five weeks of age, each puppy should get an individual portion to insure that they learn to eat and get acclimated to solid food. From then on, they should be fed in groups of three or four from the same pan or platter. The competition will increase their enthusiasm. If, in the three- to five-week age range, the pups do not eat well, hold them off of mama for two to four hours prior to feeding.

At about four and a half to five weeks, whole kibble can be used in place of the ground kibble, but it is probably best to soak it in water or milk for a few minutes first, and then mix it with the meat and cheese (at mealtime).

By seven weeks of age, each puppy should be getting an adult portion of meat and cheese, and about one cup of kibble per day (divided into three meals). The supplements can be mixed with the meat and cheese in the proportions of one pound meat, a half pound cheese, two tablespoons of bone meal, one tablespoon vitamin

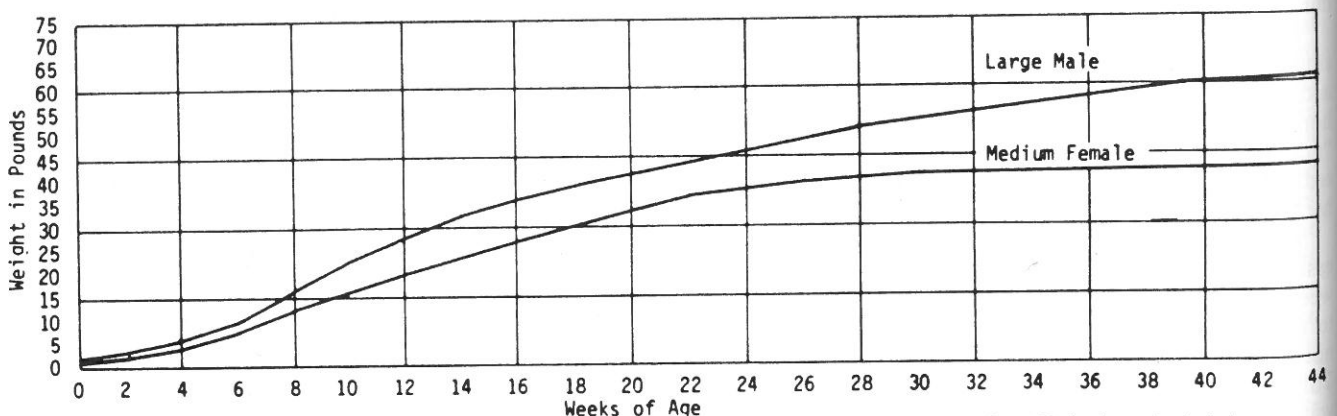
supplement, 100 to 200 units of vitamin E, a pinch of ascorbic acid and two tablespoons of corn oil or pork fat. Beyond seven weeks of age, increase the kibble to each pup as required, based on size, condition, appetite and growth rate. The maximum food intake for a pup will be between the ages of three and seven months. We have never raised a pup that required more than three cups of kibble per day (in addition to the meat and cheese), and the vast majority have done well on about two cups per day.

The pups can be cut to two meals per day at around five to six months of age. The supplements should be cut in half by about seven months of age, and discontinued entirely by twelve months.

The feeding plan described above corresponds to 60 to 65 kcal per pound of body weight in the seven- to nine-week age range, tapering to about 45 to 50 kcal per pound at three months and then to less than 30 kcal per pound of body weight at about one year of age. Figure 2 shows a couple of growth curves that represent the typical range of our own experience. Growth rate and development does, of course, vary from line to line, but these curves should be reasonably representative.

There can be considerable variation in the puppies' weight gains during the first week or so, and litter size has a lot to do with this. Our experience indicates that a one- to two-ounce gain is typical during the first twenty-four hours and that a doubling of the pups' weight in six to eight days is

Figure 2. TYPICAL GROWTH CURVES FOR TWO SAMOYED PUPPIES



The male in this chart was a 17 ounce puppy at birth and developed into a large adult, 24 inches in height and about 62 pounds. The bitch was 11 ounces at birth and developed into a medium sized adult, 20-3/4 inches tall and weighing about 43 pounds.

normal. A weight loss at any time during the first few days is cause for concern, and as much as an ounce loss should prompt the breeder to supplemental feeding if no other cause is apparent.

Every breeder, it seems, sooner or later encounters some problem which prevents the dam from nursing the whelps in the normal manner, and they thus require hand feeding by the breeder. Numerically large litters may require supplemental feeding also, and involves much the same technique.

There are commercial preparations intended as substitutes for mother's milk and they are generally quite good. Allergic reactions to these preparations can develop, however, and if this should occur, the following formula has been found to be satisfactory:

- 1 cup canned goat's milk
- 1 tablespoon white Karo
- 1-2 drops lime water
- 1 cup distilled water

If the whelps are less than three days old, tube-feeding is recommended and the veterinarian should be consulted for quantities and procedures. At three to five days of age and beyond, bottle-feeding is recommended, as it satisfies the puppy's natural suckling instincts, and they learn to taste and swallow food. Also, by bottle-feeding, the pup can tell you how much he needs - just give him all he wants. Four or five feedings per day is recommended for puppies less than three weeks old, and three times per day thereafter, following the usual procedures for solid food and weaning.

If diarrhea is encountered in bottle-feeding, try adding baby rice cereal to the formula to make a thin gruel. Enlarge the holes in the bottle nipples and feed as usual. Beyond seven to ten days of age, the cereal is a recommended addition in any event.

This entire article has been addressed to the more or less typical Samoyed with normal metabolic processes. There are many instances of abnormal metabolism, age or disease which require special dietary practices. A veterinarian should be consulted any time such a problem is suspected. Such problems may be treated with medication or prescription diets or a combination of both, and these treatments have enabled many dogs to

live to a ripe old age where an early death might have otherwise resulted.

#### References

1. "Nutrient Requirements of Dogs," a report of the Committee on Animal Nutrition, 1962, National Academy of Sciences, National Research Council, available from the U.S. Government Printing Office.

2. Collins, Donald R., DVM; "The Collins Guide to Dog Nutrition," Howell Book House, Inc., 1972, Library of Congress Cat. Card No. 79-182241.

3. Fox, M.W., MRCVS; "Canine Pediatrics," Charles C. Thomas, Publisher; 1966, Library of Congress Cat. Card No. 66-12442. •

## A View from Ringside

Phoebe Faulmann

**S**INCE it has been such a long time since I have been able to watch the judging from ringside, rather than from within the ring, I believe I have forgotten just how important having a "turned-on" dog can be. Recently, over a three day weekend, there were some lovely animals who HAD to be overlooked because they failed to "show" themselves to the judges. It seems to me that the two most important things in getting the judge's eye are: a bright white Sam and a turned-on, happy, showy dog. Some judges say that they will put up a quality dog in spite of itself, but why take a chance? Just as many say that a dog show is for show dogs ... therefore, they must show. You can bet all of us have been beaten by dogs who were not necessarily better by conformation standards, but because they showed their little hearts out and just ASKED the judge for the win. One can't really dwell on those losses because it's nice to see those happy, well-adjusted Sams having a good time and enjoying the shows. It certainly demonstrates that the dog has had some prior training and attention. It may be bothersome to be beaten by a better trained dog that is not necessarily a better dog, but that is easy enough to correct.

Whatever the quality of your dog, if you are going to show him, you owe it to the dog (and, I might add here, his breeder) to present him to the judge in his best possible form. If you have chosen your dog well, the quality will be inborn, but he will

have to be taught how to SHOW these qualities off.

Begin to train your pup early. Feed him cookies (milk bones) each time you have him on the grooming table. Teach him to eat from your hand (this is very important) and to wait on all fours for each bite. If your pup can develop a taste for popcorn, a method that works quite well is to teach him to catch the corn as you toss it to him. Aim for the pup's nose and only let him eat it if he catches it. Make it plain that he is not even to consider what lands on the floor. Naturally, this can't be started on an eight-week-old pup. Learning to watch for and anticipate the bait that is being tossed creates a wonderful and eye-pleasing effect, and works very well in keeping your dog's attention focused on you, instead of everything else going on around him. This will also teach your dog to "follow" the bait. If he will watch your hand, you can move his head up or down, or to either side. This is very handy when the judge is walking down the line looking for expression.

**W**HEN you teach your dog to bait, it's a good idea to have a pocket for the bait. Feed your dog from your pocket so that he will learn that the food is kept there. AS soon as he realizes that the food is in the pocket, he will begin to anticipate that also. After some training, you will have to do no more than give him a tidbit occasionally to keep him standing square, with ears up and tail wagging.

Your dog should be familiar with the "stand-stay" command and allow you to handle his legs in order to set him up when he doesn't stop square. I don't like to get in the habit of hand stacking a dog, and they certainly look much nicer shown naturally; but there are some cases when it is necessary. In the ring during judging, though, is not the time to teach your dogs the basics of hand stacking, so be prepared and plan ahead, just in case.

Sometimes the picture you get standing in front of your dog and baiting him is not the same picture the judge is getting. It is often helpful to elicit the aid of a knowledgeable friend to help you practice setting up your dog. Try several different ways of setting your dog up, and let your friend help you decide which is best for that particular dog. What works for one dog may not always be the best for another dog.

When you set your dog up and bait him, you are aware of feet placement and expression. Head and neck arch are areas, however, most often overlooked. In my mind, proper head and neck arch and placement do more for a dog than what Reagan had done for jelly beans! It can affect your dog's entire outline. Have your friend tell you when it looks good, and make a mental note in your minds as to his placement of head, feet, etc., from your angle. Sometimes you see people baiting their dog from such a close range that the dog is looking straight up at them, especially if they are showing a smaller Sam. This completely does away with neck arch, and will usually also cause the dog to lean back on his rear and make an awful mess of what would otherwise be a good rear assembly.

I think the best way to bait a dog for the show ring is to stand directly in a straight line with his rear, feet square and his rear well back. Try and bait your dog from hip level and stand back about three feet. Try several different positions with your friend watching, and then decide which looks best.

**A**LL of the above advice is for when the dog is standing still. It is of equal importance to have a well-trained dog when it is your turn to gait. You should have your puppy broken to lead by eight to

ten weeks of age, but be sure to make it fun. It is very important for your dog to move in a straight line, briskly, with his head up (but not looking up at you). Speed of movement depends on what is most complementary to that particular dog. Some have to move faster than others to get into a single-track. Get your friend to help again. Sometimes it is necessary to teach

yourself some balance, and to use long strides so as not to interfere with your dog's own balance.

Showing dogs is a lot of fun. But showing a successfully well-trained dog is a beautiful experience, and it also helps to decrease your anxiety. And goodness knows – we could all benefit from that. •

## Presentation

*Harold and Marguerite Kritsch  
Cumberland, Ontario*

**M**ANY people with a good quality Samoyed have left the show ring disappointed because they felt the best dog had not been the winner. They felt their dog had the best movement, conformation and quality. Could it be that their dog did not show himself to his best advantage? Did he move freely around the ring, stand squarely and readily accept examination, or was he a galloping clown picking up bait from the floor, barking and having a grand time? The judge cannot see much with a dog's nose glued to the floor, and much less with a dog squirming while trying to be examined. A dog and handler should be a team working in unison. Proper ring presentation could mean the difference of winning or not winning.

Show training should start in the whelping box with puppies about four weeks old. When feeding puppies, you should not place the food dish on the floor and let the puppies dive into their meal. Rather, let them know you have the food by allowing them to smell it and then hold it up high so they will hold their heads up to see where the food has gone. This teaches them to look toward the food and prepares them for future baiting which you may want to use in the ring. Many dogs, even older ones, never learn to look up. Have you noticed that when a ball is bounced some dogs never realize where the ball has gone?

Breaking a puppy to the lead is

the next stage of presentation. A puppy should never be dragged or forced to walk on a lead. It is very important that they have no bad experiences while on a lead. Coax a puppy with tidbits of food and keep the lead very loose. If a puppy decides to go in the opposite direction, follow him but still hold the lead. He soon will become accustomed to the lead and start to follow the food. Your training should start with only a few minutes, and as a puppy becomes older, you may extend your training periods. Do not suppress a vigorous puppy into being a statue as you may end up with a dull adult dog. Every puppy should have a puppyhood. Once the puppy is trained to the lead and knows where the bait is, make it a policy not to give tidbits unless the ears and tail are up. Even if you must put the tail up yourself and hold it there until you give him the bait. It is also good practice not to let a puppy pick up bait from the floor, especially during training. Training periods should be fun and harsh discipline left for later, unless a puppy becomes uncontrollable. Praise is essential, and all training should be finished on a good note. Some people like to stack their dogs and more work goes into that by teaching a dog to stay in a placed position. We prefer free stance, as the dog appears more alive and natural. If a dog has good conformation, he will present himself well, although many young dogs tend to stand in strange positions.

A handler must have a well-trained dog, and the handler himself must complement the dog by being

properly dressed. Wide pants, long belts and necklaces and a pocket of noisy change all interfere with the proper presentation of the dog in the ring. White shoes seem to clutter the appearance of a dog's movement in the judge's eye. No dog looks good with six feet!

When preparing a dog for the show ring, cleanliness cannot be too strongly emphasized. It seems some

exhibitors groom each of their dogs in the same manner. Each dog is an individual with individual faults that can be accentuated by improper grooming. Rather, a different technique should be used to minimize the fault.

Proper grooming, training and the handler's attire can make the difference in your show results. Preparing for the ring takes dedication and work, but it is worth the effort. •

English type that she had had the shot for was not affected with our American types. So I lost her and I was so upset about that that we had decided to get another one. That was Ch. Monte of Kobe. After that, I got two more. The last one, Janina of Kobe, just died in June 1975. They were both fourteen and a half.

*How did you happen to start using the name Kobe?*

I was breeding and people started to use my Kobe name. I'd advertise and somebody else would advertise and they didn't have any Kobe blood at all and I had bred five; at that time, I had only had four. Finally, I registered it just to protect it, because I wouldn't have registered the name Kobe, although Kobe does mean dog. Ceretta was in whelp when she came and she had seven puppies. We kept all but one.

*How many litters were there altogether?*

I would have no idea. Let's see ... I have been breeding for 34 years, and usually, after my husband passed away, I always had probably four litters a year, and he died in 1932, so I couldn't tell you - three or four per year. By that time, I had twelve dogs, and then I kept any puppy that I liked. And all of a sudden, I don't know how many years later, I discovered I had 37 Sams!

*Of all the litters you have bred, do you have one litter you would consider the best?*

The best litter. I have linebred so many years that I know the type of dog I can get by breeding certain dogs together, and as I was playing with the pictures here waiting for you to come, I can see by certain pictures that now, fifteen years later, the dogs look alike. My Ch. Babbitt and my Robin really look so much alike that after a number of years you have a hard time telling them apart.

I have done linebreeding straight through from the very beginning. The English dogs were linebred with the Ch. White Way Kobe. Now, Janina, my last English dog, was slightly different than my original English dogs, but still you see how many years between.

*What is the best dog you ever bred?*

I just can't pick it, because I rejoiced with each one!

## Samoyed People

The Samoyed Quarterly  
Talks With  
**Margaret R. Tucker**  
**KOBE OF ENCINO**  
Sun City, California

*Why did you pick Samoyeds?*

Because, as a child I always like white dogs. I went and got a little puppy, but it was not registered. It was an awfully cute little thing, and she lived to be thirteen and a half years old. My next dog was a registered puppy who lived to be fourteen years old. She died in 1944 in the spring.

*So when did you actually start breeding?*

I started with her; we waited until she was eighteen months old and then we bred her at eighteen months. We contacted the Robert Wards, they are both judges. Bob judges all breeds; Dolly judges two or three. So they were the first friends I had in San Juan Valley. Then we mated her and we got our first litter and Ch. Kunto was my first champion out of my very first litter. Of course, the Wards and I have been very good friends ever since, naturally.

*Does your kennel name, Kobe, come from the English?*

Yes, but that doesn't come in until later. I bred her to Ward's Starchak twice, and then I bred her once more, and then I went to a beginner in dogs. I wrote to Agnes Mason and sent her the pedigree and she thought it would be okay. It was outbreeding. There was a dog advertised in the English Dog World - Assemblat - his parents

were both champions and that's the pedigree I sent up to Agnes. Then Agnes thought it would be fine and then we wrote to Mrs. Perry, who had, at that time, the best-known kennel in England, and we imported her in whelp to the English champion at that time, Ch. Raff of Kobe, who was doing all the winning, so that was Ceretta of Kobe, and she came to me in whelp to Raff of Kobe. Later, Raff was imported into this country because, of course, it had been some time since anybody had imported an English Sam, and so it was quite advertised a lot in the bulletins, etc.

*How did you actually decide to start importing?*

This magazine came to me and to this day I don't know why or how I got that magazine. But it came and here was this Sam and I knew that Agnes had imported White Way of Kobe. As a result, we decided we would get her. They had kept her over there a couple of weeks longer because a new type of serum for distemper had come out over there. So I thought she was well protected. Well, I had the club coming, but they wouldn't hold their meetings off and on, and this time there was some disease around. I knew some Sams had a disease, so I asked that no one bring Sam, or come on my place. Somebody with their sick dog came and my Ceretta of Kobe got the disease.

*And was this distemper?*

Oh, yes. But when I took her to the veterinarian, he said that there were various kinds of distemper, and that the

*You should be very proud of the fact that your dogs had developed a definite line that people could actually tell they were your dogs.*

Oh, definitely. You can, today. Your linebreeding does that. People say they cull and then they put that puppy to sleep. I can't do that. I grade my puppies and ship them – easily three-fourths of all the pups I have bred have been shipped. I have shipped two or three to Hawaii; I have shipped to Alaska, all over Canada; I have shipped to Brazil, Old Mexico, and I think I have puppies in all states of the United States except a few.

*Is there a person or some thing that has influenced your breeding program?*

I would say Agnes Mason because she was up in Alaska – she was raised there – and her father had a team of dogs and she had a team of dogs and she was up there until she went to college. Then they had to come down here, because I don't believe the University of Alaska was in existence at that time. So she knew what a racing dog was. Well, I have never bred for show dogs, for glamour dogs, never. I have bred for working dogs because they are working dogs. They pull the sledges in the Arctic, so I have always wanted to keep my dogs that size. A lot of people today are breeding for big dogs. In the Arctic, they are the size that the standard calls for, male and female.

I went to the Arctic first in '62 and the last time in '71 and the White Way dogs – that is Agnes Mason's kennel. That's what she bred for. Gait shows structure, so what is a working dog if it hasn't structure? Now I love a beautiful head, I do love that. The English male that I got, I used him three times. I never used a male, either, for a stud until he was eighteen months old. But he always threw his very coarse, Chowy head, so I never used him again. I have had all my dogs x-rayed since 1952.

I think too many do breed just for money instead of the good of the dog.

*Can all Samoyeds' pedigrees be trusted as to accuracy?*

In any breed, in any line of work, regardless of lawyers, or doctors, or anything, you have people who are not honest. It is the same thing in the dog world because twice that I can think of right now. Once over in Encino and



*Kobe's Komak of Encino, a grandson of Starchak. The judge, Robert H. Ward, is wearing a tailored jacket spun of Samoyed dog hair from the combings of Ch. Starchak CD and woven in Nova Scotia.*

once on Fulton Avenue in North Hollywood, I had women come and ask me for papers for their dogs because they were not registered. I naturally refused and tried to explain to them what they were doing, that it would get into the pedigree and then people who would want a certain bloodline would buy, and because it had certain dogs in it, and they really weren't in there. Both times I was told, "I know a breeder who for \$25 would give me papers. Why don't you?" I told them it was dishonest.

I had a pedigree come back to me from the Midwest and they had one of my dogs as a dam.

So yes, people can falsify. When you sign your papers, you guarantee that it is true as far as you possibly

know.

*Have you seen the difference of the dogs since they have been here in Southern California? Do you think that Sams will possibly gradually lose their coat because they are not in the Arctic?*

No, I have always raised Sams here in Southern California and they take my dogs from here up to Canada and they do get a heavier, denser coat. But they don't go beyond their genes in length. Now, when I brought the English dogs in, I had to watch out for that, because England has a law that they do not work their dogs; they are not allowed to work Sams at all. So they have gone a lot for coat and they do have glamour coats, and that's where Jimmy gets that longer coat that

I am not especially fond of, but he does have a long, English-type coat.

*Has it been your experience that coat was very important to winning in the ring, and in color, would you actually penalize biscuit?*

No, I wouldn't penalize biscuit because it is in our standard; it is permitted. I would not penalize it. We tried to put several things into our standard, but AKC vetoed them so we couldn't put them in. We wanted some penalties, but AKC vetoed them. But no, I would not. I prefer pure white. The standard has been a bone of contention for many years; they wanted to raise the standard of bitches to 22, and AKC vetoed that. It passed for twelve and then vetoed, because if you change one thing, then the next generation is going to want to change another, and the next, and then you haven't the original dog at all.

*What advice would you give to other breeders who are just starting out?*

First, study the standard. Then go to dog shows and see what dogs they like personally. Then get a puppy and train him and then watch if they want to establish a kennel. Watch all the dogs in the show ring and see, because sometimes when you are starting out, you like several different dogs. Then get the opposite sex from the other dog that you like and mate them, and then linebreed. Then start from your puppies and grandchildren, then linebreed and keep to that linebreeding. If there is one thing that you want to establish, of course, you inbreed, but then you have to keep your puppies from six months to a year in order to know that you are saving the right puppy for the point that you made dominant by inbreeding.

*How much grooming should be done, and specifically, what did you use?*

I never took a dog to a show without first bathing it and grooming it. That is half the battle. The judge goes from dog to dog and you take a dirty dog in the room who has not been bathed.

Baby shampoo is excellent; Sam's skin is extrasensitive to detergent, and after I no longer bathed my own dogs, I have had to change from one groomer to another because they have used detergent and the skin breaks out. So I use baby shampoo, or Ivory

Flakes. I have never had any trouble with Ivory Flakes (not the powder, but flakes). And you pour hot water over it and beat it with an egg beater, and I have never had any trouble with skin rash from Ivory soap.

*Did you ever go to many match shows to start the puppies off, or did you just start actually taking them to the shows?*

Fifty-fifty. I have always trained my own dogs myself.

*Should a handler be used and does a big name handler help in some way to win?*

I think without a doubt if your dog is not absolutely tops a well-known handler helps.

*Do you think judging today is fair, and what can be done to improve it?*

I would say that a sincere judge will always be fair. Just like we were saying, there are people who are honest and people who are not honest. And the judge that looks at the handler – whether the owner or a professional handler – he's not being fair. He is being dishonest; he is judging the owner instead of the dog and there is nothing that I can see that you can do about it. When you know that it is that type of a judge, just don't show under him.

*Do you think sledding has any value to the dogs?*

Oh, yes. I think yes in both ways – I think sledding will tighten up a dog, make his muscles as they should be, especially in a working dog, develop muscle and strengthen the dog throughout and then it is lots of fun. Most dogs love to be hooked up and raced. They love it! All of my dogs that I used for racing would get so excited, you would go to hook them up and they couldn't stand still. They would "yip, yip, yip!" and oh, the fun you would have with them. It is just the most fun! Sure, your hands get cold; your toes get cold, too, to us from Southern California, but oh, it was so much fun. I have missed it! My husband was crippled from the first World War, so we couldn't run our dogs. Did I ever have a female in harness? I don't believe I did, but I have often had three of my dogs on one team. But oh my, that is fun!

*How long have you lived here?*

I got my first registered Sam in 1944 and I had the unregistered Sams for fourteen years, and in 1944, when she died – just six months later – I got

the registered Sam. That was in Encino; I was over there, and in 1954, I was asked to move by the city because I had too many dogs, and I moved over to North Hollywood in the industrial area. Then I stayed there for 21 years, due to the health and surroundings, I moved down to Sun City – senior citizens' town.

I have had dogs all my life and I was in the service for 30 years. I was a physiotherapist after the first World War.

*Where did you get your physiotherapy training?*

First, I went to Kellogg's Sanitarium in Battle Creek, Michigan at a coed school for physiotherapy and physical education. I stayed there for the first semester, and then, being old-fashioned – we wore big bloomers at that time – I couldn't lay down on the floor and kick my legs and do everything with men in the room, too, coed, so then second semester I changed to a girls' school, physical ed, in Chicago, and stayed there. It was a good thing, because I got the background for physiotherapy there.

*Tell us about yourself and your husband.*

He had dogs all his life, too. Since we didn't have any children, you have to have something to love, so we got dogs.

*Is there anything else about the Samoyeds that you would like to bring out?*

Just that I certainly hope they won't change the type and the disposition of a Sam. I do wish and hope that when the breeder sells the puppy, he will talk on structure. I do think today we do have better rears than we had some years ago; I can't say as much for the front. I think we had better fronts before. Now, many dogs are perfect today, just the same as they were in those days, but we have more poor fronts today than we did in those days. And I do wish they would watch that. They are very minor things in a dog; the minor things you just don't inbreed on that, that's all. You compare the two dogs and try to find out something about their ancestors so that you don't make a minor fault become a major fault. But I think that is the duty of the breeder to alert a beginner, because I was so ignorant when I started with Sams. •

H. Ward,  
e

ference of  
en here in  
you think  
dually lose  
not in the

ised Sams  
a and they  
to Canada  
lenser coat.  
their genes  
rought the  
atch out for  
a law that  
s; they are  
at all. So  
at and they  
and that's  
er coat that

# Caveat Emptor! (The Expenses of Dog Ownership)

Dave Moe  
Lakewood, Colorado

**W**E first decided to buy a dog in early 1974. That was only three years ago, but my! how long it seems in retrospect. Not that those years have been other than thoroughly enjoyable. Not that we would do it any other way if we had a second chance. But ... well, maybe I'd best explain myself.

When we first decided that a Samoyed was for us, we were living in an apartment and driving a Volkswagen (bug). With our frugal habits, we did not see a dog as being a major expense item. Our first education came with the realization that we could not keep a dog penned up in an apartment. We went out and put a down payment on a new house, then settled back and waited for our loan to close. Good timing being a precise art, the puppy was ready for us three weeks before the house was, and we snuck him out daily before dawn and after sunset to do his thing, hoping against hope that he would keep quiet in the daytime so as not to get us evicted prematurely. Apparently our hope was rewarded, as we never heard from the landlord.

But even before we moved to our new house, another inconsistency became evident: we could not transport ourselves and a fully grown Samoyed in a VW, with any expectation at all of comfort and convenience. Perhaps at this point we should have begun to realize where we were headed – but no, we dashed right out and bought an economy station wagon.

Now the happy family moved into their new home, with everything they could wish for except – What's this? You can't have your dog wandering loose. He could be run over, or stolen. This thought occasioned two necessities – fence and a dog run. A run by itself would leave the dog where he could easily be seen by unscrupulous passersby while we were not at home, and would require his being chained in the yard when he was out of the run. A fence, alone,

would mean that the dog would have to live cooped up in the basement, unless we were home and he could play in the backyard. Result: (1) dog run – materials and a blistering, sweaty Saturday, and (2) fence – stockade variety, six feet high. Of course, the dog being outside necessitated the construction of a nifty A-frame doghouse (materials and two Saturday mornings). At least I had enough sense not to try building the fence by myself.

So much (thank God) for the initial expenses of dog ownership. Now we began to discover the incidentals connected with such bliss and happiness. First it was membership in a local breed club and a national breed club. Then it was subscriptions to the AKC Gazette and other doggy magazines. Then it was vet bills – shots, checkups, wormings and X-rays. Then it was shows!

Shows had to be the topper. We discovered that it cost a minimum of \$8 (more in most cases) to acquire the princely right to parade your dog for a few moments before a man in thick spectacles, who was paid, not by the quality of his selection, but by the number of dogs he got to choose from. In short, the more the judge got paid, the less our dog got noticed. Considering the amount of time a particular exhibit spends in the eye of the judge, it works out to about \$4 per minute. A tidy sum, and much more enjoyable as income than as outgo. At any rate, the cost of walking into the ring was only part of the expense of showing. Hot dogs, coffee, parking, gas (for a local show) and the show catalog proved to be, at minimum, almost as much as the entry. Multiplying the total cost by a reasonable average of twenty shows per year, and adding enough for gas, food and lodging at all out-of-state shows, brings us to an annual sum that staggers the imagination. However, that cost, although it practically constitutes a king's ransom, covers only the actual expense of going to the shows. It does not include the preparations.

In the cost of soap and water, the preparation of the dog for showing is not a considerable amount. But we

discovered that there were a few other incidentals: pin brush, polishing brush, slicker brush, combination brush, wide-tooth comb, fine-tooth comb, tooth scraper, trimming shears, thinning shears, toenail clippers, matt splitter, nose black, large fan, industrial vacuum, grooming table, crate, leads and collars, or in other words, quite an investment in basic accouterments. We were just beginning to fathom the depths of the dog game. The word "game," by the way, is rather a curious term when applied to dogs. It refers to a contest of endurance between one's sanity and one's bank account.

Going into our second year of dog owning, we began to concern ourselves with the fact that with both of us working (to support our habit), our dog was alone all day. The obvious answer to this dilemma is one dear to the hearts of all Samoyed owners, for whoever heard of a Sammy owner with just one dog? A dog is, after all, only human, and must get very lonely when left by himself. So being either gluttons for punishment or irretrievably stupid, we bought another puppy – this time a bitch.

**H**APPILY, the purchase of a second dog did not entail the purchase of as much auxiliary equipment as did the first dog. They could use the same car, the same yard, run, doghouse, grooming equipment, etc. The only additional cost was for her own lead and collars, her own crate, her own food, her own vet bills, and so on.

And one more thing. The bitch did one thing that our dog had never done – she came into heat. Now previously, our annual kennel bill had been small, as we were only on vacation for nine days out of the year. But now not only was our vacation kennel bill doubled, but twice annually the bitch had to go to the kennel by herself for a dozen days, in order to maintain our dog's sanity. In short, doubling our inventory of stock more than quadrupled our annual kennel costs. Still, a bitch does have some advantages. For one thing, she doesn't kill trees and shrubs, which

are no mean expense in themselves.

Showing our dogs required another expense we had not considered – training classes. Now the cost of our club-sponsored classes is very reasonable. But when you add gas to and from classes, and stopping at the diner after class for pie, coffee and conversation (with tip), and when you do this, say, 30 or more times a year, you have once again spent a large sum of money in such small increments that you haven't even seen where it went. (Remember, it is the little expenses that kill you.)

**F**OOD! The word had a sumptuous and savory sound. Say it again slowly and listen carefully. Do you hear the chink of coins and the crackle of crisp bills? Being dog lovers as well as dog owners, we fed only the best. A dog is, after all, only human. How would you like to eat creamed chipped beef for every meal? And so we fed a dry dog food for roughage, a soft-moist for balance, calcium phosphates for the bones, vitamins for vigor, a special protein mixture, hardboiled eggs for the coat, and cottage cheese for consistency. We added sundry canned meaties for flavor and variety. No matter that the dog next door did fine on table scraps and kibble. Oh, yes – we also fed table scraps. And for goodies we served up large Milkbones, morning and night, with a parade of dog treats and Bonz through the day, for every little instance of obedience on their parts from going out on command to coming in on command. (We didn't know it at the time, but something in a dog's nature compels him to pass through an open door, with or without command. If he is inside and a door is opened, he will go outside whether he wants to or not. If he is outside, he will come in. He cannot control this response. How often have you let your dog out only to see him standing by the door wanting right back in? He never wanted to go out in the first place. But when you opened the door, out he went, with no more ability to stop himself than a puff of smoke on the breeze.)

Returning to the subject of this discourse, I believe we have catalogued most of the expenses of owning dogs. They are certainly not the same figures we put down on paper

when we first began to think about buying a dog. For those of you who are considering your first such purchase, or who know of someone who is about to take the plunge, the following list is included in the summary:

#### EXPENSES OF DOG OWNERSHIP

One-Time Expenses: House; Station Wagon; Fence; Dog Run; Doghouse; Grooming Tools; Scoop Shovel; Grooming Table; Power Dryer; Carpet Vacuum; Large Fan; Bath Tub (usually comes with house).

Annual Expenses: Local Club Dues; National Club Dues; AKC Gazette; Other Doggy Mags; Show Catalogs; Food at Shows; Gas to Shows; Lodging at Shows.

Per Dog Expenses: Crate; Collar and Lead; Food Bowls; Worming; Squeaky Toys; New Shrubs (for dogs only); Carpet Cleaner; Newspaper; Paper Towels; OFA Application; Tattooing.

Annual Per Dog Expenses: Shots; Checkups; Minor Surgery; Food; Kenneling (triple for bitches); Show Entries; Water for Washing; Water for Drinking; Goodies; Training Classes; Fun Matches.

This list does not include prices, as they may vary with geographical location, and by taste or budget. It also does not include such incidentals as extension cords or electricity for the power dryer, new grass seed for backyard foxholes, miscellaneous furniture items (pillows, towels, sofas) that a dog might destroy, lawsuits for dog bites, replacement bags for the vacuum, a dolly for the crates, etc. Oh, yes! It also does not include the

actual cost of the dog itself, which is far too often the only expense the novice dog buyer considers when he decides to purchase a pet.

Yes, it has been a very long three years since we began to number ourselves among the fancy. Long on companionship. Long on enjoyment. Long on love. But certainly much longer on the pocketbook than we ever could have envisioned at the start. For educational value, I would rank it against junior high and high school combined. If we had only known then what we know now ... we'd have done the same thing, anyway.

But that's just our own foolishness. Other people may find themselves in a different boat altogether. So perhaps the next time you see some giddy young fool looking wistfully at a litter of fluffy puppies, you might consider whether or not you ought to flash the list (above) past him, and give him a little preview of what lies in store for the unsuspecting. More than likely it will make no difference to him whatsoever. Any head, once turned by a Samoyed puppy, is not likely to turn back again for any consideration. That's part of the intoxication and fascination of the breed. But every prospective buyer has at least the right to know all of the coincidental details connected with dog ownership that are not obvious at the first glance.

Caveat Emptor – Let the buyer beware! ••

*Reprinted from "Samogram," a publication of the Samoyed Club of Colorado.*

## Roadwork and Your Sam

(Should You or Shouldn't You?)

*Phoebe Faulmann*

**W**ITH warmer weather and sunny skies over most of the country, many of us will be taking to the great outdoors, and with us

will go our Sams. After a winter full of rain and snow, we are looking forward with added interest to the upcoming circuits. This brings to mind the thought that many of our furry friends will come out of their semi-winter retirement, and with the help of their overanxious owners begin their roadwork programs to

assure that they are in top possible form for the shows.

More and more people are hearing about the benefits that can come from a forced exercise program. Just the mention of the word "roadwork" seems to "strike up the band" for some folks. They look upon it as a magical cure for their dogs' ills, or shortcomings. After all, the dog that swept the last circuit was roadworked every day. They had asked his handler.

**N**O one can argue the advantages to having an animal in top working form; they could fill up the page. But these dogs have been conditioned by people who know what they are doing ... people who have bred, shown and most likely even raced dogs over a number of years. They have a commonsense program developed by experience along with trial and error.

The novice cannot, and does not, realize the harm that can come from an improper exercise program. Most people never even contact a reliable source before putting their own formulated, cure-for-all programs into use. And although everyone agrees about the need for a routine exercise program, little has been written about how to go about it. I have heard proud owners boast that their hopeful is doing three miles a day while pulling 50 pounds of weight. And to think he is only seven months old. I am afraid there are many well-meaning people who just don't realize what they are doing wrong.

I have collected some ideas that might be useful in your decision of roadwork and how to go about it.

No puppy should ever be run using the car. Puppies given the freedom to play usually give themselves adequate exercise and they know to stop when their bodies have had enough. If you feel you must exercise your pup, do it on a loose lead in your backyard. Puppies are loose ligamented - just as a growing child, they cannot take the strain of roadwork. When the ligaments tighten up, then you are ready for roadwork. The

effect of a forced exercise program on a puppy can be disastrous.

Consider your surface. The best surface is grass, dirt and some types of gravel or sand. The pavement of most roads retains heat and is far too rough and hard. If you gait on pavement or cement, go shorter distances and be sure to watch for sore pads or lameness. Pavement is not a desirable surface and should be avoided whenever possible. The surface used for roadwork should be level. A slight uphill grade will help, but *never* gait a dog downhill, as this can break down the pasterns and shoulders. Keep the dogs' nails as short as possible and treat their pads with a toughener if they get sore. To be beneficial, roadwork must be started at *least* a month prior to showing. Work on a loose lead at a comfortable speed. A Sam with correct angulation can naturally gait faster than one with steeper angulation. Allow your dog to gait as slowly as possible without pacing. The slower speed helps reduce some of the shock on the pasterns, and the slower the speed, the more you can build up the muscles.

To work your dog, you can either trot with him or work him beside a bicycle or behind a car. If you use a car, the best speed is zero to five mph. Never any faster. Start your dog out at a quarter to a half mile at the most. When you are in the car, this does not seem like any ground to cover at all, and maybe you will be tempted to go a little farther, but when the dogs haven't been worked at all, you must realize their muscles will feel the strain. The second week of work you can increase the distance by another quarter to half mile. After a two-week period, you will be up to a mile. Increase another half mile each week until you are up to two miles. Never go over two miles at any one time. After you have built up to two miles a day with daily work, a session three times a week will be sufficient to keep your dog in condition. Never start working your dog a week before a show. Remember to allow at least four weeks to see your results.

Always remember to use com-

mon sense. If you use the tailgate method, check to see that the dog is not inhaling the exhaust from the car. Stop if you see your dog tiring. Plan to do your work in the cool part of the day, and never after the dog has had a full meal. Always wait at least an hour after exercise to feed. And always start with a dog that is in good general health ... never one that is overweight or debilitated. An overweight dog can wind up with broken down pasterns and a permanently poor front because of the unnatural strain caused by the overweight combined with the stress of roadwork. Get the weight off first, and while you are waiting to begin, take the dog for long, slow walks. When the extra weight comes off, then he will be ready, and so will you.

I don't think one should give a positive age to start roadworking. Don't start your pup the day he turns a year. Every dog is an individual. Let it depend on his physical maturity. Many are still too "loose" to start at that age.

**R**OADWORK is used to help correct minor movement faults and is a good method for the lazy dog that allows his muscles and ligaments to become soft and loose from disuse. But a dog that moves incorrectly because of structure faults will receive little benefit, if any. Sometimes a structurally incorrect dog will develop another movement fault to compensate for the one he already had. No amount of roadwork will make this dog a "winner."

I hope you can see that roadwork done improperly is dangerous. Before you start, talk with a knowledgeable person ... one who has done it over a period of years and is aware of what *can* and *will* go wrong.

After you have put together a well-structured exercise program and carried it out, sit back and watch your dog fall into a natural, flowing gait - the kind you can admire hour after hour. It may be that you and your dog will be the next ones to "sweep" the circuit. •

## What Was I Just Saying?

Dave Richardson  
Long Beach, California

**H**OW many puppies did you produce last year? Why? What happened to them? Where are they right now? How about the year before that? Did you know, before you bred the litter, who would be buying them?

Those of you who have heard me speak on the subject of the responsibility of the breeder for what he breeds have heard me state that the breeder has a responsibility to, first and foremost, those puppies that he has created; second, to the people who have bought those creations of his; and third, to the rest of his fellow Sam breeders and fanciers. How one handles these responsibilities falls under the classification of professional ethics. I don't mean those items like making sure that the sire and dam of a litter are in good physical condition, are compatible breeding partners, and all those other points that are so prone to end up being embedded in some praiseworthy but otherwise innocuous document called a "Code of Ethics." If you are a breeder, a professional in dogs, then these things are just normal operating characteristics.

The things I'm talking about now can probably best be shown by a couple of (true) examples. The first has to do with a novice couple and their first Sam, bought from a well-known breeder, as a companion/show prospect at eight weeks of age. The couple received the standard comments about both parents being OFA, PRA clear, etc., and received a GUARANTEE that the dog would be free of this, that and the other, or they would get their MONEY BACK! Eight months of age and the puppy is severely dysplastic. The couple contacts the breeder and is told that they had raised the puppy on a slippery surface and had let him stand on his hind legs, and the GUARANTEE was no longer valid. The couple were stuck with a puppy, a large financial problem in trying to alleviate the puppy's painful condition, no possibility of any help from the breeder, and a very bad taste in their mouth.

This was no isolated instance, as the breeder is known for sharp transactions of this type. The novice couple finally had the pup put down and are now in Siberians. They are nice people and I wish them well in their new breed.

The second example has to do with a couple who weren't novice, but are quiet, gentle kids who are still feeling their way into the "professional" category. They had shown a dog, bought specifically from another well-known breeder as a potential champion, that had developed a substantial genetic "hitch in his git-a-long." They, too, had a GUARANTEE, this one a replacement type of document. They had already invested two plus years of time and lots of dollars in this animal, and did not want to start over again with a puppy, so they made a bargain with the breeder. The bargain went something like placing their present male in a pet home, giving the breeder several hundred dollars on top of the three or four hundred that they had originally paid, and they would receive a good show quality male that the breeder had in her "kennel." They sent the money, and lo, nothing came back. Some time passes and our couple calls the breeder. The breeder says she can't send the dog; not now, not ever. Our couple says, "Uh, yeah, sure, but what about sending back our money?" The breeder says, "Oh, well, I'm sorry about the money, but I've already spent it!" There follows a year of quiet dickering with our couple worried that if they said anything rash ("Gimme back my @\$%&\* money!") they would irritate the breeder and not get anything back. So there they were - no dog, no money, three years down the tubes and another case of bad taste in the mouth. Eventually, by threat of legal action, they did get their money back and they are still in the breed. Unfortunately, so is the breeder!

**A** third example, a quickie. A Midwest couple contracts, long distance, to buy a puppy based on an ad. They send the full price of \$400 plus shipping. The litter is born and, you guessed it, the con-

tractual puppy never gets sent! Period! End of story! No kidding, they have written, called, sent telegrams, and they don't even get a reply! For crying out loud!

Where are the professional ethics of these people, these breeders? Why do I, and mine, have to field the phone calls on these rotten transactions? How are we supposed to explain to these people that they are seeing abnormal situations, that they have run into the "take the money and run" group, no matter that both of the breeders involved in the mentioned examples are well-known show kennels? How do I tell the customers of these breeders that the GUARANTEES aren't worth the paper they are written on? And, how do I tell the world that the term "breeder" implies honor, integrity and conscientious application of what is right and proper in the selection, placement and follow-up on the puppies produced?

**I AM A BREEDER!** I am responsible for guaranteeing that the puppies I produce will be placed in proper homes, companion, show or whatever. I have to make the decision that even though the puppies are getting too old to be placed easily that I won't just shuffle them off to some spur of the moment buyer so that you can get the Sunday night phone call from the guy with the eaten chair. I have to be prepared to take that puppy back, right now if need be, if he is in a home where he is not wanted. I have to be financially and morally responsible for the guarantee that I make on the pup's viability, usefulness and worth as an adult. I have to bend over backwards to the person who buys my puppy; education, guidance, honesty in all my dealings. If anybody is going to give, it is going to have to be me, **THE BREEDER.**

How many puppies did you produce last year, breeder? How many of them came back or were you asked to take back? Could this be because you produced too many puppies? Sure, sure, I know that you are breeding good examples of the breed, that you are single-handedly saving the true Samoyed from extinction. But, with all of those puppies underfoot, are you

sur  
ing  
tho  
no  
ma  
da  
fo  
get  
ma  
you  
rem  
you  
to b  
acti  
had

**S** lence  
has b  
most  
breed  
ed pr  
tion o  
of on  
there  
tant c  
dyspl  
breed  
mance  
plasia  
preser  
sium o  
"I  
of gen  
plasia  
mass s  
result i  
tion b  
should  
purpos  
use of  
formar  
perform  
genotyp  
(Se  
posed C  
Schem

sure that you didn't act hastily in placing some of them? Maybe a couple of those "fast sales" are the ones that are now giving you ulcers. Maybe, just maybe, you compromised your standards on the type of home you wanted for those pups; moved too quickly to get the pups out of the house. No matter, friend, those pups are still your problem and should act as a reminder that a little thought before you breed that litter that you "just had to have" is a lot easier than the transactions around the pups that you "just had to sell."

**YOU ARE A BREEDER!** Your honesty and honor, your professional ethics are, first and foremost, up to you and your interpretations of what is right and what is wrong. Honor cannot be legislated by your club, by your state's laws, by any act of anyone but yourself. But, what I do will be visited on you and what you do will be visited on me, so let's try to be kind to each other and responsible to our pups, responsible to the people who buy them, and responsible to the breed that allows us the pleasures that breeding now and then brings. •

OFA offspring produced; such ads play "the numbers game." Information on the NUMBER of OFA clear progeny is totally useless, and indeed dangerous, since it may lead people to believe a dog (or kennel) is doing well in producing clear dogs when, in fact, that may not be the case. The number of clear progeny that can be claimed is more a function of the number of puppies produced than any ability to produce clear offspring. Consider, for example, the stud that produces 50 puppies with a 50 percent hip dysplasia rate; he will have 25 puppies he could conceivably claim as OFA clear. Another stud with 20 puppies and a zero hip dysplasia rate will have 20 puppies he can potentially claim as OFA clear. For hip dysplasia purposes, the latter stud is a better bet, but lists giving only the number of OFA clear get out of these two studs may well make the former appear to be on a par with, if not superior to, the latter. Many breeders who would not dream of using their stud on a bitch who does not have an OFA number, nevertheless seem unable to report the PROPORTION of their stud's x-rayed progeny who are dysplastic (or clear) — but they can frequently quote useless statistics on the NUMBER of OFA clear progeny.

If we as breeders select breeding stock or studs, or if we as buyers select a kennel from which to acquire a puppy, with selection against hip dysplasia in mind, what information do we need?

(1) First, if the stud, brood, or breeding pair have produced a number of puppies, determine how many have been x-rayed and what proportion OF THOSE X-RAYED are dysplastic. Note that it is the proportion of those x-rayed, NOT the proportion of those PRODUCED, that is relevant. Animals with bad batting averages on hip dysplasia production can still have low proportions of hip dysplasia if those proportions are figured on total puppies produced and only a few of the puppies have been x-rayed. (The dog with twenty puppies, all dysplastic, will have a five percent hip dysplasia rate based on total puppies produced if only one puppy is x-rayed (1/20).)

If the proportion of dysplastic to total x-rayed animals is notably above twenty percent, recognize that you are

## The Numbers Game

*Don and Dot Hodges  
Poynette, Wisconsin*

**S**INCE the early sixties and the establishment of the Orthopedic Foundation for Animals (OFA), the prevalence of hip dysplasia in Samoyeds has become a principal concern of most fanciers. Virtually every serious breeder follows the minimum accepted practice of radiological examination of breeding stock and the mating of only clear individuals. However, there is a second and equally important criterion for selection against hip dysplasia which few people in this breed seriously use: family performance. A proposal for a new hip dysplasia registration scheme for Canada presented at the 1972 OFA Symposium on hip dysplasia stated:

"It is recognized that heritability of genetic predisposition to hip dysplasia is low. Hence individual or mass selection against the disease will result in very slow progress but selection based on family performance should give rapid progress ... The purpose of the scheme is to encourage use of selection based on family performance rather than on individual performance alone — or, selection of genotype rather than of phenotype."

(See Crawford and Kaye, "A Proposed Canadian Selective Registration Scheme for Control of Canine Hip

Dysplasia," page 152 of Proceedings of the CHD Symposium and Workshop held in St. Louis. October 19-20, 1972, sponsored by OFA.)

Many of you familiar with Samoyeds around the country know of dogs that have OFA certification and several generations of OFA certified ancestors who nevertheless produce a high incidence of hip dysplasia. If one approached eradication of hip dysplasia solely from the principle of breeding clear dogs to clear dogs, such individuals might seem to be better breeding bets than dysplastic animals; unfortunately, that may not be the case. In general, most authorities in the field would agree that while selecting clear dogs for breeding is better than no selection on hip dysplasia criteria at all, nevertheless one would be better off breeding dogs with good family performance (i.e., high proportions of clear offspring, siblings, etc.) than breeding dogs with OFA clearances (and with ancestors with OFA clearances) who have poor family performance. To quote one OFA newsletter: "A mildly dysplastic dog with all normal siblings would be a better breeding risk than the only normal dog from an otherwise totally dysplastic litter."

Samoyed ads for kennels, studs, broods and so forth frequently pay lip service to the concept of family performance by touting the NUMBER of

dealing with an animal or breeding pair that is producing hip dysplasia at a rate greater than the breed average according to OFA statistics (however, OFA statistics are based on those X-rays submitted to OFA; since X-rays of obvious hip dysplasia cases are frequently not sent to OFA, hip dysplasia incidence in the breed is probably greater than OFA's broad average – how much greater is not known). Recognize, too, that if the proportion of dysplastics is based on only a few x-rayed puppies, this statistic is less useful as an indicator of the animal's potential production rate – small sample results can be unreliable.

(2) Suppose, however, that the stud, brood, or breeding pair have no or very few puppies from previous breedings of adequate age for x-ray results. Then determine likely family performance for these dogs by asking about hip dysplasia incidence in full and half sisters and brothers, and the incidence in litters produced by such relatives. Also ask about the animal's aunts and uncles. In all such instances, it is again the proportion dysplastic out of the total x-rayed that is the key statistic.

(3) Suppose little information is available on dysplasia performance in either parts (1) or (2). Then you have no alternative but to rely on the fact that the individuals themselves are clear – this information is not as comforting as good family ratings from (1) and (2), but it is better than not knowing anything at all about the dysplasia status of the individuals involved.

**R**EVIEWING this three-step plan, you will see that the OFA status of the individual has been given less significance than other information on family performance. This should not be interpreted, of course, as implying that dysplastic animals should be used if one can demonstrate good family performance, since in our breed there are sufficient quality specimens who are neither dysplastic nor from families with poor hip dysplasia performance. But the point to be made is that information on an individual's status is of little comfort if that individual does not have the family performance to back him up. If the goal is eradication of hip dysplasia, the concern is what

that individual is going to PRODUCE, and his own status is only a small clue in that respect.

Let us make three final points. First, none of the comments in this column should be construed as implying that hip dysplasia should be the sole, nor necessarily the most important, criterion for selecting puppies, studs, or broods. In other words, the information gathered on family performance will have to be weighed along with the information on all other criteria for selection that you consider important. Second, if adver-

tisers are going to use advertising space to provide information on hip dysplasia records, they would do the breed a greater service by devoting that space to the really relevant hip dysplasia information – the proportion of those x-rayed that are dysplastic – rather than playing the numbers game. Third, to develop reliable family performance statistics on their breeding stock, breeders should foster customer relations that encourage x-ray evaluation of ALL puppies they produce, whether sold to show or pet homes. •

## Samoyed People

The Samoyed Quarterly  
Talks With  
**Lila Weir**  
**JOLI**

Renton, Washington

### *How did you get started in Sams?*

When J.B. and I were first married, we had seen the Samoyeds of Bernice Cooper at Four Star Kennels in Maple Valley. She had the kennel up next to the road, and as J.B. rode by on his motorcycle, he happened to see them.

When we were out at Silver Lake about 23 years ago, and I had about \$35 saved, I'd seen Sam puppies advertised, so I wrote to this ad which was out in Auburn. She wrote back and said they were \$35 without papers and \$15 more if you wanted the papers. The sire was Ch. Stormy Weather of Betty Blue, which meant nothing to me at that time. Well, it just so happened I had that many dimes and quarters. (laughter) So J.B. brought that one home – that was "Happy." Time went on and eventually we heard of a match in Marysville. Went to the match and, of course, Happy was an absolute idiot. So then we went to another match, in Whidbey Island, and Janet Wilcox was judging (she was a handler at this time). She told us if we just taught that dog some manners he'd go. So, J.B. ended up going to

George Payton's handling classes. George is now a judge, and Janet is also a judge. A lot of time has gone by.

At the second match is when we saw Nan-Nuk, who was owned by Goldie Klein and Marie Mueller. At that point, we just fell in love with her. She was about eight months old and we said when we got another Samoyed, a female, we'd get one from Billy Tucker. We just assumed they were like these cookie cutters, we'd just write to Billy and say, "We want one just like her." Of course we'd get one! Talk about green!" (laughter)

Nan-Nuk was two years old when they decided to sell her and she'd had two litters. That's how we started, and a couple of years later, we had a litter of puppies from Happy and Nan-Nuk. Four of them became champions, one needed one point to finish and we never finished her. We were off and running!

In all, I think we bred five litters with eight champions, two of which we owned ourselves.

We had a policy which, with only one exception, we followed all the way. A female was bred once, we keep what we want from the litter, and that's it. If it doesn't turn out, tough! We don't try again and again just to see if we can do better.

As time went on, we ended up

keep  
char  
out t  
any  
dogs.  
I'm  
  
here  
S  
Corg  
here.  
L  
work  
Y  
PRA  
last l  
none  
check  
check  
dogs  
it has  
sham  
about  
dog b  
was a  
point,  
the d  
dogs'  
Regar  
But I  
that it  
Some  
qualit  
anima  
course  
the las  
nine a  
cropp  
possib  
ing? I  
picked  
Sams,  
in thei  
checki  
are, ey  
not bre  
croppi  
Unfort  
who sti  
W  
with th  
glauco  
ever w  
not hav  
ma, wh  
We foc  
a lousy  
rent on  
little pu  
took h  
around  
would

keeping dogs from litters that weren't champion quality and they just lived out their lives here. We never had any luck finding homes for adult dogs. We used to have 30 dogs here — I'm down to 20 now.

*What are the breeds you have here now?*

Siberian Huskies and one Welsh Corgi, which we don't count, he's just here.

*Did PRA affect the lines you were working in?*

Yes. We were out of Sams when PRA hit, basically. I think we had our last litter prior to that, so actually none of our dogs' eyes were ever checked. Some of the get were checked, so we know that some of our dogs were obviously carriers, because it has come down the line. It's a real shame. I feel about PRA as I did about hips. There's an awful lot of dog between the eyes and the hips. I was afraid it was going to get to the point, which it didn't, really, where if the dogs' hips were clear and the dogs' eyes were clear, breed it. Regardless of what's between them. But I don't see that, I'm really glad that it doesn't seem to be happening. Some people are still breeding their quality animals to somewhat faulty animals if those animals are clear. Of course the eye thing we can tell, but the last one I heard of, the animal was nine and a half years old before it cropped up with PRA. How can you possibly wait till then to do any breeding? I think the general attitude that I picked up on in PRA, especially in Sams, is that people are eliminating it in their breeding programs. They are checking, a goodly number of them are, eyes on a yearly basis. They're not breeding those animals which are cropping up with eye problems. Unfortunately, there are a lot of us who still aren't checking eyes.

We never had any eye problems, with the exception of Rainy, who had glaucoma. That was the only one who ever went to an eye man and he did not have anything except the glaucoma, which was caused from an injury. We fooled around with our local vet, a lousy one, I might add (not the current one), for two weeks. He had a little puncture in the right eye and we took him in. If we hadn't fooled around for two weeks, he probably would never have had glaucoma,

because it went from one eye to the other, infecting the other eye. He did not have anything else wrong with his eyes, and he was five years old then. None of our dogs ever went blind. All of our old dogs lived until they were thirteen years old. Maybe some of them did have it, I don't know. If I were to do it over again, I would certainly have eyes checked, but at that time, nobody checked eyes. We had hips x-rayed, of course, from our very first dogs, before OFA. As a matter of fact, even the last ones we x-rayed were prior to OFA. We have our Siberians' eyes checked and their hips are x-rayed, but I don't bother having eyes checked on dogs I'm not breeding. I have more dogs around here I'm not breeding than dogs I am. Although with eyes we took all of our old stuff in and had eyes checked to see where we were at, whether or not they were being bred. Now I'm to the point where the young stuff will be checked. The males will be checked on a yearly basis and the females will be checked before they're bred and probably not again until they're older, unless I suspect something is wrong. If I had Sams, they would be going in for a yearly check, because it certainly is a problem.

*Some people have said they consider that PRA in Sams has been a problem affecting a few breedings in the country. Do you agree with that?*

Well, all they have to do is buy my pedigree book and start chasing their dogs back, and those dogs they think are affected, because they're going to find they all go back to the same dogs. As far as I'm concerned, most every Sam in the United States has the potential possibility of a carrier. Granted, not all. The problem was intensified by linebreeding to dogs who had PRA without knowing it. This is the reason, from my viewpoint, that they cropped up. But when you start looking through their pedigrees, you're going to find the same dogs that are in the background of the affected dogs are in the background of everybody's Sams. If not within the first three or four generations, further back. Since PRA did not start with this generation of dogs, you have to go back. It did, of course, hit the Northwest area. And, again, there was no secret about it. It was linebreeding to an affected animal which,

who knew? This ended up a real mess. But the potential is there in everybody's dog, as far as I'm concerned. If I had Sams, they would jolly well be checked out. At the same time, I feel if you find an affected animal in your stock, this is not the time to throw everything out and start on someone else's. Getting rid of your current stock and going to someone else's isn't going to solve the problem. Number one, you may find that you have compounded your problems. The local people had to go out because of the turn-around. Everything they owned was affected, practically, or they were pretty sure they were carriers. It was a very bad thing. Some of the best dogs who ended up being affected were definitely carriers. Being gung ho on pedigrees as many years as I have, I always laugh when someone says, "It isn't in my line." Stick around, it will be! I always think, too, if you breed long enough, you're going to run into everything.

*If you had an outstanding dog, an OUTSTANDING Samoyed, and he was a confirmed PRA carrier, or, say, he was a confirmed carrier of hip dysplasia, would there be any circumstances where you would use him at stud?*

On my own stock, perhaps. He would never be an outside stud. You're speaking of a really outstanding specimen, not just a good dog, but really a special dog. I would very probably use that animal on one of my own bitches and keep everything in the litter. I would discard the pet stock as it cropped up by finding good homes for them, or, like I say, most of my dogs just live here the rest of their lives.

I would be much more leery of a PRA carrier or the eye problem than I am of the hips, having gone into that for many years. If the dog was producing hip dysplasia, I would not be too concerned with a clear animal from that dog. In other words, we would go the palpation route, looking for a pup from him which did not have HD. But I'm more worried with PRA, because if he was a carrier and the female was a carrier, even if the pup didn't have it, it would probably be a carrier, and you just go down generation after generation with it. As far as we know at this point, it's a

recessive. There doesn't seem to be any other solution. What has happened is a goodly number of generations have just now cropped up and the right combination came out. This is the reason I say there is no one line anyone can say is clear of it.

*What about the case of a person who has a stud dog that has been bred to 10, 20 or 30 bitches? Does he have the responsibility to the breed to test-breed his male?*

No. He has the responsibility to have that dog's eyes checked. He also has the responsibility to keep track of the puppies, not only for PRA or HD, but what kind of pups he's producing. Is there some fault that's cropping up here? Temperament, for instance, that you can only lay back at the door of that stud? That, to me, is the responsibility of a stud owner. I don't feel that he should have to test-breed. When it comes to PRA, I just don't feel it's going to do any good. If it could be definitely proven at six months, that would be one thing. So we're asking people to produce an awful lot of worthless animals. Maybe some people can put them down - I can't. That's what happened with the Malamutes with dwarfism. They ended up flooding the market.

*Do you think that potential puppy purchasers should make sure that both the sire and dam have certification numbers before they buy them? In other words, how much care should people take? Same with OFA.*

I'm not sold on CERF. I don't mean that I'm against them. I don't think, at this point, that my own dogs will be certified. My stud dogs probably will be, but it is strictly a registration thing. The certificate you get from your VO is all you need. In other words, if I go to someone and say, "I would like a puppy from this litter. Please show me your certificates from your veterinarian ophthalmologist that clears the eyes of the sire and dam." That's all I need. I don't need a CERF number. At the same time, the CERF is, of course, very beneficial. For instance, if I want a puppy from someone in Miami.

*Isn't it kind of a universally recognized standard, just like the championship?*

Yes. It will become one, eventually, and I'm sure it is coming. A



*Ch. Joli White Knight, August 1965. Littermate of first four in Stud Dog picture. Co-owner/co-breeder/handler, Lila Weir.*

CERF number is easier to put down on the end of a pedigree rather than going out and Xeroxing copies of the original certificate. I, myself, to buy a puppy from anyone, would insist upon eye examinations - with proof. Either a CERF number or a copy of the certificate which, of course, has the date on it.

I would also insist on OFA. I feel anyone going out and looking for top quality stock that they plan to show and/or breed should also insist on it. But, if a breeder doesn't have to do it

and can get away with selling puppies without it, then I guess more power to them. In fact, when I've had a litter of puppies, even when people buy pets, I've told them that the dogs were OFA'd. I explained it to them and showed them the eye certificates on the dogs simply because I feel this is a breeder's responsibility.

*In regards to your research with the pedigree book, has the research shown that the PRA carriers today go back to any specific dogs or group of dogs?*

N  
way w  
obviou  
crop u  
that so  
to hav  
PRA.  
the sam  
ed Sta  
where,  
Wh  
you me  
people?  
Or  
Englan  
importe  
more, b  
were us  
With th  
five Sar  
every or  
the Engl  
four who  
Russia in  
rest of  
importe  
imported  
related,  
all relate  
ferent tan  
different  
with diff  
that word  
when you  
nice to s  
We calle  
thing ever  
word bec  
what you  
Are th  
related to  
teen?  
I beli  
goes bac  
imports, e  
teen were  
England so  
we importe  
England, t  
single one  
say every  
Pedro. I thi  
and found  
original dog  
Everybody  
back to the  
They got th  
as possible!  
Why do  
in some are  
others?  
More in

No. Not actually. There's no way we can tell going back, but it's obvious that it's something that didn't crop up from underneath a log and that some of the very first imports had to have been either carriers or had PRA. Since all of our dogs go back to the same dogs, every dog in the United States, Canada, England, anywhere, is a potential for PRA.

*When you say the same dogs, do you mean dogs from the Samoyede people?*

Originally the Sam people in England. There were about fifteen imported into England, maybe a few more, but actually about fifteen who were used extensively in breeding. With the exception of about four or five Sams here in the United States, every one of our Sams goes back to the English Sams. There were about four who were imported directly from Russia into the United States. All the rest of our Sams were originally imported from England. England imported from Russia, so they are all related, many generations back, but all related. Everyone went off on different tangents, so that's why we have different types. Well, they started out with different types, as such. I hate that word! We used to use that word when you couldn't think of anything nice to say about somebody's dog. We called it "typey." I've had this thing ever since. I just don't like the word because it really doesn't say what you want to say.

*Are there some lines which are related to just a portion of these fifteen?*

I believe that every single Sam goes back to every one of those imports, eventually, because the fifteen were crossed back and forth in England so many times. By the time we imported dogs over the years from England, they were carrying every single one of those imports. Now I say every one - there are dogs like Pedro. I think I was able to trace back and found him in the pedigree of my original dogs. He was the black Sam. Everybody's always delighted to trace back to the black Sam. (laughter) They got that out of there as quickly as possible!

*Why do you think PRA showed up in some areas of the pedigree and not others?*

More intensive breeding to an

affected animal. I think it has lain hidden for many years. It has been occurring over the years, but it has not been occurring with a great amount of frequency - enough for anybody to realize it was a problem. A dog has gone blind or its eyesight impaired, maybe it's gotten hit by a car, so who knew? Now, of course, I have a feeling that (maybe I'm wrong) in maybe ten years it will be hidden completely again, waiting to come leaping out at the unsuspecting person.

They are finding the carriers now and the affected dogs are being eliminated from programs (that is of the people who are really dedicated breeders). But you also have zillions of puppies being born every day to people who don't know any of these things. Eventually they end up in someone's pedigree. So who's to know? Not everyone is going to check eyes - not everyone checks hips. As long as it's been kicking around, there are still an awful lot of people who don't. According to the OFA representative for the Siberian Husky Club of America, we have 2,500 OFA'd dogs now, but there have been close to that many registered in a month. It's the same with Sams. I think there are 3,500 now, which I don't think is even a half year of registrations.

*I think they were registering over 10,000 a year.*

Right. So approximately less than one-third of what has been produced in one year has been OFA'd. Obviously there are a lot of un-x-rayed dogs running around. Probably that many again have been x-rayed and cleared by their local vet. It still leaves an awful lot of dogs that have not been cleared or ever been near an X-ray machine.

We used to hear, when we first heard of HD twenty years ago, "My dogs don't have any problem." And yet I remember one specific dog that they called Chuchu because his hips clicked. That was twenty years ago, nobody KNEW about hip dysplasia, right? You could actually hear that dog's hips click. Now we know, of course, that the dog was obviously badly dysplastic. We knew of a number of crippled dogs in the rear. We had dogs that were finished for their championships that had lousy rears. They never went under an X-ray

machine, but we can assume that they were probably dysplastic at this point. Who's to know?

I think this is a very difficult problem for people who are really dedicated to doing what they can to produce top stock. They are x-raying and having eyes checked, and in the meantime, they are trying to get rid of the faults that are cropping up in the line. That's a very small minority of people, very small for the number of dogs that are being bred and the number of puppies being produced. Don't get me started on overbreeding. Screaming bloody murder! These people who are having any more than one litter a year are overbreeding; in fact, in some cases, one litter a year is overbreeding. And using studs right and left. Oh! Uh! But, I guess everyone has their own ideas.

*Tell us about your Best in Show Sam that you bred.*

Knika, yes. Knika was sold, of course, as a puppy to some friends of friends in Portland. They kept him almost a year and then their son ended up with asthma and they had to get rid of him. Cliff Bade came by. Cliff had his own Tartar Prince whom he had bought. He was, I think about fifteen then, maybe even younger, because when Knika took his Best in Show, Cliff was seventeen and I think Knika was four. That, of course, was out of our first litter - beginner's luck again.

I always feel and still believe that in order to get a Best in Show dog you have to be in the right place at the right time and you've got a real quality animal.

Anyway, Cliff bought him and he started showing him off and on. I think that Knika was two years old when he finished him. Of course, we knew Cliff and helped him out. I always referred to Cliff as a "sponge," because he was always asking questions and would listen to every answer. It was marvelous having someone like that around, really did wonders for your ego. It still does, by the way. (laughter)

I was supposed to go to Denver, they had asked me to be guest of honor at that particular specialty. Suddenly, at the last minute, I couldn't make it, but Cliff went with Knika. Dolly Ward was the judge and she, of course, put him to breed, after

which she had to fly home. She's never forgiven herself for that, but there was no way she could stay for Best in Show. At that time, I believe there were 830 entries, which was a huge show in 1963. Which, of course, is nothing now. What's an 800-dog show? But at that time, it was bigger than any show in this area. That was a thrill! I don't know who was more thrilled, Cliff or me!

*Was he campaigned extensively?*

Not really. Cliff was going to high school and he showed him locally. The only other was Denver, and after he returned from Denver, in California. It seemed as though – I'm not sure of his record – every time he took breed, he placed in Group. Cliff was an adequate handler. He was showing at a time when kids, per se, often didn't get a look from the judges. He was a very young seventeen, but he did a nice job with handling. Certainly not on a professional level, and yet that dog invariably got a good look if not placed in Group. I think he had a couple of firsts in Group besides that. Knika died at a very young age. I always felt that if the dog had been professionally handled and campaigned he could have been right up there at the top as far as winning Bests in Show, etc. At the same time, I don't think that's all that important. I think that the fact he took Best in Show with a boy of seventeen was just great. Better, really, than if he'd been campaigned by a professional. Being a Best in Show handled by the owner is a much bigger win than a dog that's professionally handled.

*Why do the Samoyeds fair so poorly as compared to the other arctic breeds in sled competition?*

I think of the arctic breeds a beautiful Sam with that glistening white coat and gorgeous head is flashy.

A lot of Agnes Mason's dogs were used, but you look at the pictures of the White Way Sams. They were very efficient machines. They were good-looking dogs, but they didn't carry all this glorious coat (they had lovely heads) and they were working dogs.

I think what attracts most people to the Sam is not his ability as a working dog but his appearance. So actually, soundness and ability to move



correctly haven't been all that important. There's a big race, the Iditarod, from Anchorage to Nome, that is run every year. I think if I had the opportunity I could go around the United States and I could get a team of Sams to compete. I think there are good ones which could run, especially the long distance race. I don't think Sams are sprinters. They don't fare too well in sled racing on these nice, beautiful tracks (of which there aren't too many). I think where they do best is on some lousy track where they're belly deep in snow and they'll keep going when other dogs quit.

*Do you think there's too much emphasis on coat?*

There has always been too much emphasis on it. Nobody admires a beautifully groomed, beautifully coat-

ed Sam more than I do, but there can be too much.

I have a feeling about that anyway. Whether it's a Sam, Siberian or any dog of any other breed, if there's one thing that you see, that hits you in the eye, whatever it is, it's too much. The Sam shouldn't be overdone on anything.

*Is there too much emphasis on head?*

Being a "head hunter" myself (laughter), I have a problem looking at a Sam – I tend to look at a head first. I'll see a Sam and I either like him or I don't, but right after that I'll look at the head, then I'll look at the gait. For my own preference, I want a good head and a good gait. I'm interested in coat, tail carriage and all those other things, but if I can have

Stud L  
Nantu  
handle  
of Enc  
Weir;  
out of  
lane; A  
month

those  
proper  
anythin  
Of cou  
thing.  
not to  
one tha  
W  
I  
Happy  
teeth,



Stud Dog class, August 1961; Judge – the late Eva Hill. Left to right: Ch. Jöli Knika, handler/owner Cliff Cabe; Ch. Jöli Nantu, handler/co-owner/co-breeder Lila M. Weir; Am/Can Ch. Jöli Fang CD, handler-owner Dick Ross; Jöli Un-Nuk, handler/owner Martin Guchee – needed one point to finish above four out of one litter from Am/Can Ch. Kobe's Nan-Nuk of Encino – they were two years old in this picture; Am/Can CH. Tod-Acres Fang, co-owner/handler the late John B. Weir; Am/Can Ch. Winter Wind's Tamerlane, bred/owned/handled by the late Gil Simpson – thirteen months old here – out of Leordan's Winter Wind of Ga-Les; Winter Wind's Silver Lady, owner/handler Marilyn Lewis – litter-sister of Tamerlane; Am/Can Ch. Kombo's Silver Prince Am/Can CD, owned and handled by breeder Ellen Weltzin, Canada – he is eight months old in picture – out of Can. Ch. Snow Ridge's Sonya.

those two things, a pretty head and proper gait, I'll settle for just about anything else in between. (laughter) Of course, pretty heads are a touchy thing. What is pretty to one person is not to another. I want a gentle head, one that looks sweet.

*What's your ideal head?*

I suppose it goes back to Happy's. That dog, showing all his teeth, couldn't look mad. He

COULDN'T look mad! It's a sweet look.

*Do you believe the "game" is honest?*

The game is mostly honest, yeah. When you get into Groups and Best in Show, then you're in a different ball game. I'm speaking of class dogs. Many breeder/handlers are better and more competent than the professional handlers in their breed.

*Was there a reason for your decision to get out of Sams?*

We never really decided to get out of Sams. We just ended up being without them, if that makes sense. We didn't really make a decision, it was more or less made for us. We had nothing to show or breed and we just never went out and bought them. We felt we had lost the quality of our first Sams. •