

F B F T C

OF
LOS ANGELES



Vol. II. No. 6

MARCH

PRICE 25c

1929

**Free Service to
EBELL Members**

If you get a puncture or blow-out when on the road call

Westmore 2343 and we will come at once and fix your tire free of charge.



The New SUPER-SERVICE INDIA TIRE

... is the finest tire that can be made—bar none! It is "custom-built." Made expressly for those who want—and can afford—the best.

No limitation was placed on its cost specifications—either in quality of material—or cost of construction. It is the acme of perfection in tire construction—the last word in tire design—the culmination of tire making. And, because of this high-quality and high-cost construction—naturally it costs more than the average tire.

This tire is extra "over-sized." It has an extra thick tread—assuring perfect traction and longer wear. It will add immeasurably to your pleasure and comfort to realize that the possibility of a puncture or a blow-out is so remote that you can dismiss these, or similar troubles, from your mind.

It is made of superior material—the purest and highest-priced rubber possible to obtain. Not an ounce of reclaimed rubber or cheapening fillers enters into its construction. And its jet black solidity adds to the appearance of the finest car.

The India Super-Service Tire will out-run and out-wear any other tire now on the market. It has been subjected to the most rigid tests to demonstrate that it is capable of a greater mileage than you will ever need—30,000, 40,000, 50,000 miles. It should last you as long as you keep your car.

Above statements are backed by two separate and distinct guarantees: The India Tire & Rubber Co. guarantee the tire against all defects in material and workmanship for the life of the tire. Nelson & Price, Inc., the largest distributors of INDIA tires in the world, with a 17-year reputation for Tire Service, stand back of the tire with a specific...

**MINIMUM GUARANTEE OF
25,000 Miles**

Nelson & Price, Inc.

HOLLYWOOD BEVERLY HILLS VERNON
6433 SUNSET BLVD. 1729 WILSHIRE BLVD. 3711 SANTA FE AVE.
LONG BEACH RIVERSIDE
1118 AMERICAN AVENUE 452 WEST 8TH STREET

America's Finest Tire

Beautiful Toluca Lake Park

"Where Hollywood Meets North Hollywood"

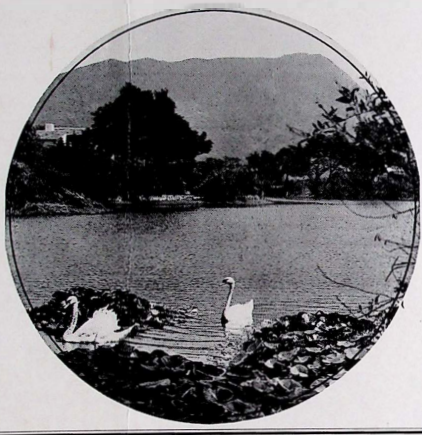
The new home of the picture stars.

Three and a half miles from Hollywood Boulevard

HEFFRON-MCCRAY-ST. JOHN

178 South Western Avenue

DUnkirk 6116 Los Angeles GLadstone 2687



BEAUTY IS RESTORED

with

WHITE KING

GRANULATED SOAP

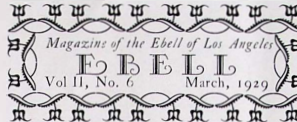
Fabrics may not be new, but they can be made to look like new with White King Granulated Soap.

Clean... smart... fresh... that's the way your gingham and prints will always look if you will only be sure to wash them with White King Granulated Soap.

It's safe for anything water may touch.

**WHITE KING
GRANULATED SOAP**

Washes Everything



Mrs. Charles S. Crail.....*Editor and Manager*
Ivan Deach, Jr.....*Advertising Manager*

Contents of this Issue

EBELL ENTRANCE	Cover
OUR CLUB	1
Mrs. Charles D. Burt	Frontispiece
HOSPITALITY IN THE CLUB—Mrs. A. Bennett Cooke	3
PROGRAM	4
EBELL'S BRIDGE TEA	5
NATURE LOVERS—Mrs. Chas. D. Burt	5
AUDITORIUM GUEST TICKET COMMITTEE	5
DEPARTMENTS	6
DEPARTMENT NOTES	7
ART AND TRAVEL DEPARTMENT BY Mrs. James W. Johnson	8
THE SPIRITUAL VALUE OF VOICE TO LITERATURE Mrs. William B. Hunnewell	8
EBELL HOUSE COMMITTEE	9
PROGRAM NOTES	10
SOCIAL WELFARE ACTIVITIES Mrs. Chas. Eggleston Crary	11
PRACTICAL RELIEF REST COTTAGE SCHOLARSHIPS	
EBELL'S POETRY PAGE	12
EBELL JUNIORS	13
EBELL'S LIBRARY	14
EBELL'S BOOK PAGE	15
CLUB POLICY	16
IN THE GALERIA	17
CLUB CALENDAR	18
APPLICATIONS FOR MEMBERSHIP	19
IN MEMORIAM	19
CLUB NOTES	20
PERSONAL INTEREST	21
HEARD ABOUT THE CLUB	22
THE ETIQUETTE OF THE FLAG	22

Our Club

WHEN a person feels that he is beyond need of improvement that is the time he should be careful for he probably needs improvement then most of all.

Just so it is with a club, self satisfaction is often self destruction. It is not enough that Ebells is located on the handsomest boulevard in the city, in a clubhouse excelled by no women's clubhouse in America, richly adorned and magnificently furnished; it is not enough that Ebells' membership is the largest and that it is selected from the most intellectual and cultured in a city where the successful of all the nation have gathered. Ebells must constantly improve, must constantly furnish to its members better service and higher ideals in club activities.

Ebells of Los Angeles is not static. She is either improving or deteriorating. She will either march forward in fulfillment of her purpose, or she will lag behind in failure and defeat.

Many problems concerning the welfare of the club come before the board for attention and ultimate solution. It is impossible to bring them all before the club in open meeting. Yet they are problems in which every club member should be interested. Questions such as these, how the club may be more congenial and hospitable to members, the future policy for the club's financing, increase in dues, new departments, the most acceptable type of Monday programs, our dining room, evening functions. These are but a few of the many problems which are vital to our club. It has been suggested that the magazine present some of these problems and that the members discuss them among themselves with the hope that the discussions will gradually crystallize into a wise solution of them. The success of any undertaking is largely dependent upon the friendliness and co-operation of the co-workers.

To be the president of Ebells for a term is an education in itself; it is an opportunity seldom matched anywhere. Our presidents grow with the opportunity and the responsibility. In a real sense they become stateswomen with large minds and broad horizons. One of the most necessary attributes of a successful club is hospitality. Our president gives her reflections on this subject in this issue.

Other subjects will be presented in subsequent issues with, perhaps, a questionnaire whereon club members may express their ideas on the various subjects.

GIFTS AND GREETINGS

For All Occasions

BRIDGE PRIZES PLAYING CARDS



Shop at OSCAR BALZER'S "Two Shops" Just West of Vine

EBELL MAGAZINE

This Magazine is published by the Ebells of Los Angeles, with Editorial Offices at the Club House, 743 South Lucerne. Oregon 4104. The Advertising and Printing Offices are at the Wetzel Publishing Co., Inc., 336 South Broadway, Phone TUCKER 4145.



Photo by Boye

MRS. CHARLES D. BURT



President's Notes

Hospitality in the Club

By MRS. A. BENNETT COOKE

IN THE year seventeen hundred and ninety-eight, while France was still suffering from the madness of revolution, King Charles IV of Spain presented to the Mission of Santa Clara, California—so the story runs—a chime of three large bronze bells as a harbinger of peace. These came with the proviso that they be rung every evening at eight-thirty o'clock to remind the faithful to pray for the souls in purgatory.

For one hundred and fifty years these bells performed their daily task, sending their silvery tones out over the beautiful valley, like the Muezzin of the East, to call the faithful to prayer.

Then came that fateful October day in nineteen hundred and twenty-six when the old Mission was burned to the ground. The belfry crashed into the flames and two of the bells were broken and melted by the intense heat but the third remained intact.

With much difficulty this bell was withdrawn from the burning embers, cooled, suspended hastily, and at the usual time its message rang out on the clear evening air—a message that all was well, that the faithful must not be faint-hearted, that out of the ashes would rise something probably greater and better, that duty was duty and all work was worth while.

Just so in our club life every now and then a clear, silver-toned message comes to us that somehow clears the atmosphere of harassing details and allows us to see the worth-whileness of large endeavor.

Many years ago such a message went the rounds of the club world. It was called "A Collect for Club Women," and while I saw it in many different publications, at no time did I see the name of the author attached to it. A few days ago I saw it republished after a lapse of years and this time the credit was given to the clever woman who wrote it.

I reprint it here because I feel those of you who knew it and loved it years ago will be glad to have a copy for your scrap-books and those who have not seen it before will respond to the clarion call it makes to the best and the highest that is in us.

The EBELL of LOS ANGELES

4400 WILSHIRE BLVD.
OREGON 4104

OFFICERS

- Mrs. A. Bennett Cooke, *President*
 Mrs. Charles S. Crail, *First Vice-President*
 Mrs. Edgar S. Stanley, *Second Vice-President*
 Mrs. Frank Howell Stanbery, *Third Vice-President*
 Mrs. Edward Everett Sherrard, *Fourth Vice-President*
 Mrs. Edward A. Tufts, *Recording Secretary*
 Mrs. Albert Homer Purdue, *Corresponding Secretary*
 Mrs. James Catlett Ernst, *Treasurer*
 Mrs. J. Elbert Harshman, *General Curator*
 Mrs. Samuel Emerson Faraot, *Chairman EBell Rest Cottage Association*
 Mrs. Alfred W. Rea, *Chairman of Scholarships*

DIRECTORS

- Mrs. A. Bennett Cooke, *Chairman, Board of Directors*
 Mrs. S. M. Browne, *Chairman of Rentals*
 Mrs. Charles D. Burt, *Chairman of International Relations*
 Mrs. Charles Eggleston Crary, *Chairman of Social Welfare*
 Miss Frederica De Laguna, *Chairman of Resolutions and Public Relations*
 Mrs. Grantland Seaton Long, *Chairman of Theatre Interests*
 Mrs. William Read, *Auditor and Chairman of Finance*

COLLECT FOR CLUB WOMEN

By MARY STUART

Keep us, O God, from pettiness; let us be large in thought, in sword, in deed.

Let us be done with fault-finding and leave off self-seeking.

May we put away all pretence, and meet each other face to face without self-pity and without prejudice.

May we never be hasty in judgment and always generous.

Teach us to put into action our better impulses, straight-forward and unafraid.

Let us take time for all things; make us grow calm, serene, and gentle.

Grant that we may realize it is the little things that create differences; that in the big things of life we are as one.

And may we strive to touch and to know the great, common woman's heart of us all.

And, O God, let us not forget to be kind.

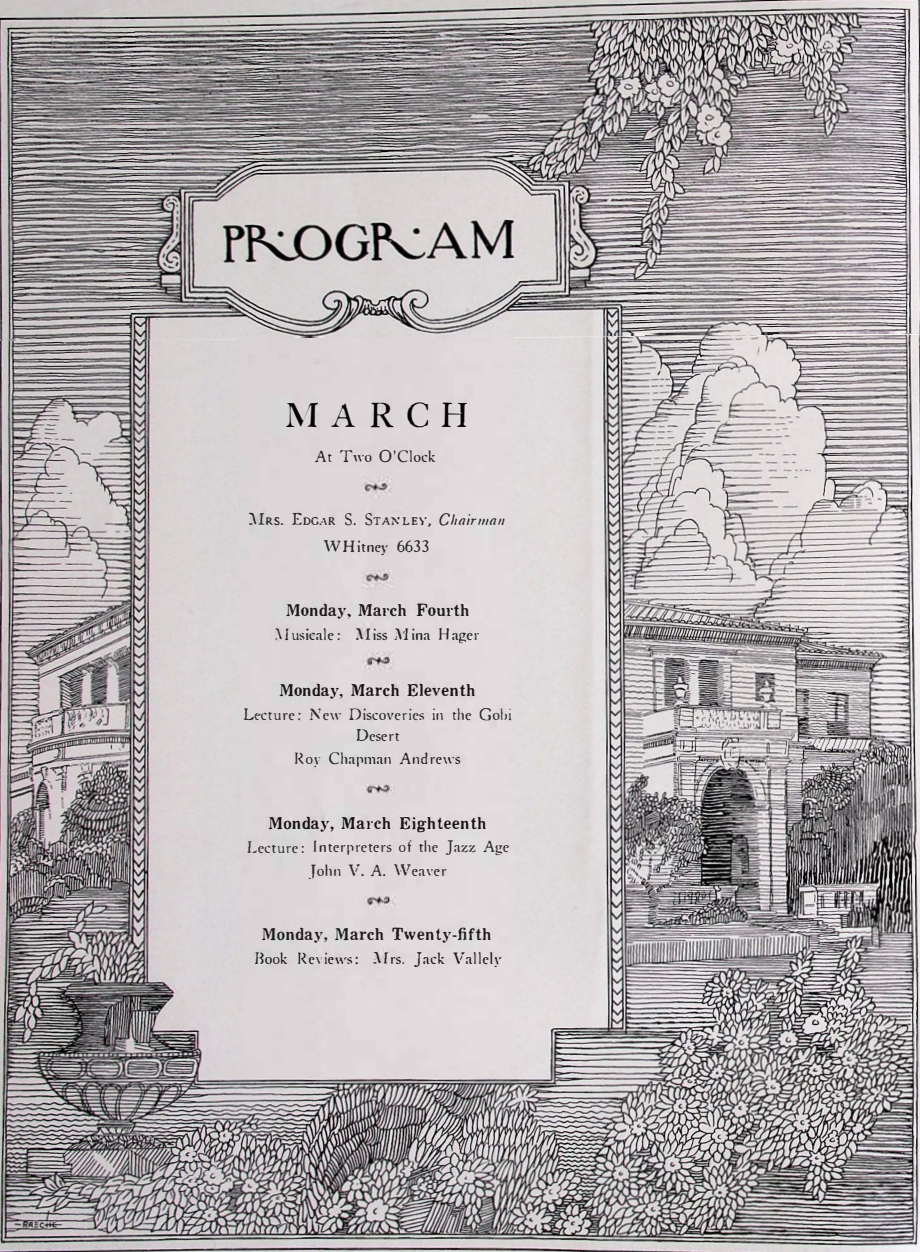
The dictionary defines hospitality as friendliness to guests, to visitors. It hardly seems possible that there should be any lack in this respect in our club. But I wonder if a greater show of friendliness and cordiality of the members to each other might not be cultivated to advantage.

The intimate, subtle, intangible thing to which we apply the term atmosphere pertains to all institutions where people habitually assemble. With a membership as large as ours it is hardly to be supposed that more than a partial personal acquaintance obtains among all.

At the same time we are in a sense one family and might well afford to forego some of the unimportant formalities and conventions, bearing in mind that no loneliness is so poignant as that one sometimes feels in a crowd.

If we wish our club to grow and blossom in the graces of friendliness and hospitality we must cultivate these graces in our contacts with each other.

"And, O God, let us not forget to be kind!"



PROGRAM

MARCH

At Two O'Clock

Mrs. EDGAR S. STANLEY, *Chairman*
WHITNEY 6633

Monday, March Fourth
Musical: Miss Mina Hager

Monday, March Eleventh
Lecture: New Discoveries in the Gobi Desert
Roy Chapman Andrews

Monday, March Eighteenth
Lecture: Interpreters of the Jazz Age
John V. A. Weaver

Monday, March Twenty-fifth
Book Reviews: Mrs. Jack Vallely



Photo by Boye

MRS. FRANK LAMBERT STITH

Ebell's Bridge Tea

By Mrs. F. O. McCOLLOCH

MARCH fifteenth is the date chosen by the benefits and entertainment committee for the first of the series of cozy Bridge Teas, to be held in the tea room of the beautiful Ebell Club.

The tables will be limited to sixty, and will be only four dollars each. Reservations may be made direct to Mrs. Robert Hartwell, 306 So. Kenmore, or to Mrs. William J. Wilson, 5017 Franklin, and must be accompanied by checks. There will be no scheduled sale of tickets, as is customary for the larger social affairs. Because of the small number, the time honored rule of "first come, first served" will have to be the order of the day. The demand will be great, for there are many who will delight in finding this happy way to serve the club itself, and also in the intimacy this opportunity will afford.

This marked departure from the usual elaborate and crowded party was prompted by two very definite reasons:

First, and by far the most important one being the welcome announcement of the chairman, Mrs. Wilson, that the quota for the Club Philanthropies had been completed, and the budgets of the various Welfare departments assured. The response to the appeal of Rest Cottage, the Scholarship Fund and the Practical Relief was generous and in keeping with the need they presented, and the splendid attendance at the teas, luncheons, etc. given for this purpose was a most satisfactory demonstration of the love and interest they hold in the hearts of all.

And the second, and, now that we consider it, almost as important reason, is the purpose for which the money derived from these teas will be used. They will be given for the benefit of the furnishing and comfort of the club itself. Many demands have come from members for covering for the stairs. The money from this party will

(Continued on Page Seventeen)

Nature Lovers

By Mrs. CHARLES D. BURT

A NATURE LOVER

*Oh, how I love all buds that blow,
All flowers of field and comb!
I love the works of Nature so
I have to take them home.*

*For like a babe I needs must clutch
The pretty things I see;
I love the lovely flowers so much
I cannot let them be.*

*From meadow, marsh and wood I take
Enough to load a truck:
The branch was made for me to break,
The rose for me to pluck.*

*With dogwood boughs I freight my car,
And heaps of trailing pine;
I can't enjoy them where they are,
I have to make them mine.*

*While duller mortals dare avow
That where they ride or walk
They leave the bud upon the bough,
The bloom upon the stalk.*

*Their souls are sure of baser stuff,
Their hearts are made of stone;
He loves not loveliness enough
Who makes it not his own.*

*And so a curse, a blight, a bane,
My ruthless raid I ride,
To plunder orchard, heath and lane
And waste the countryside.*

—ARTHUR GUITERMAN.

California's wild flowers, like her wild game, are disappearing rapidly, and in our effort toward conservation, in some cases, we are locking the barn door after the horse has been stolen, by passing protective laws for the preservation of wild flowers, cacti, and many other plants. These laws are especially timely in regard to cacti as in some places the desert is being entirely devastated of these plants by "plant hogs" (we have road hogs) who are taking them away in truck loads. So one can see that the danger is imminent.

There is a great temptation when we are motoring over our wonderful highways, to stop and pick armfuls of the wild flowers that grow by the wayside, but how many of us stop to think that if some one ahead of us had done the same thing, we should not have had the pleasure even of seeing these beautiful flowers? So the same misfortune will come to those who follow us when we have ruthlessly pulled and trampled these gifts of God. Many times these flowers are so frail that they will before we arrive at home and we simply throw them away. This is really wicked; so let each member of Ebell appoint herself a committee of one to protect California's wild flowers by simply admiring them as they grow and by not picking them.

Unfortunately the regulations against the removal and destruction of certain plants are not uniform in the different



Photo by Boye

MRS. CHARLES F. RATHMAN

Auditorium Guest Ticket Committee

MRS. CHARLES F. RATHMAN, chairman of the auditorium guest ticket committee, is assisted by Mrs. Philip Benjamin Kennedy. The committee slogan is, "The customer is always right." Yet the committee must abide by a few simple rules made by the board of directors and the patience and courtesy of Ebell members make this possible.

The station is just inside the Lucerne Street entrance and for your further convenience a table has been placed at the Eighth Street door where guest tickets may be secured one hour before all auditorium meetings.

counties but an effort is being made to make them so. At present it is unlawful, in any part of the state, to remove trees or shrubs in any forest reserve, or to pick flowers or remove plants from private property without the consent of the owner. The following list includes some of the plants which are now protected in one or more of our southern counties:

Strawberry cactus, fishhook cactus, hedgehog cactus, barrel cactus, torch cactus, cholla and beavertail opuntia, maguery agave, smoke tree, ironwood bush, desert holly, desert ironwood, desert candlewood or ocotillo, California fan palm, tree poppy, Matilija poppy, sea dahlia, western azalea, mountain dogwood, desert lily, lemon lily, chocolate lily, maidenhair fern, camp or cardinal pea, scarlet larkspur, and Mariposa lily. Other plants will be added to the list as the need is felt. It is human nature to resent a law when it is made, so let us anticipate legislation by refraining from being a factor in the destruction of one of California's assets, her wild flowers.

Again may we ask you to read the ar-

(Continued on Page Twenty-two)

DEPARTMENTS

MRS. J. ELBERT HARSHMAN, *General Curator*
Olympia 5234

MRS. ROBERT H. HUNSTOCK, *Assistant Curator*
Washington 6560

MRS. DICK SMITH, *Assistant Curator*
Rochester 9349

◆ ◆ ◆

APPLIED DESIGN—SECOND AND FOURTH MONDAYS, 10:00 a.m.
Mrs. Lurah C. Davis, Curator—Washington 5332
Department Room

March 11th—First class, exercise in bird forms, circle, rectangle and triangle
Second class, flower form, side view, twelve by seventeen inches

March 25th—First class, rhythmic leaf, one color, eleven inches.
Second year class, bowl of flowers; problem based on proper distribution of black. Twin idea of one dominant form and articulation of all subordinate forms, ten by ten inches

◆ ◆ ◆

ART AND TRAVEL—THIRD WEDNESDAY, 10:00 a.m.
Mrs. James W. Johnson, Curator—EX 4603
Fine Arts Room

March 20th—Traveling for Pleasure in South America
Mrs. John D. Fredericks
On the Way to Bogota
Mrs. John Gates, Jr.
Living in the Andes at 14,200 Feet Elevation
Mrs. Francis Webster Blackford
Luncheon in honor of representatives of the Press.

◆ ◆ ◆

BETTER AMERICAN SPEECH—FIRST TUESDAY, 10:00 a.m.
Mrs. George W. McCoy, Curator—
Washington 6344
Fine Arts Room

March 5th—Shall We Bring the Radio Diction Medal to Los Angeles?
Mrs. David Douglas Hugh
Drill in Speech Improvement
Mrs. H. Kenyon Burch
Latin an Aid to the Study of English
Mrs. Ilot Johnson
"Prunes and Prisms" or Slang
Mrs. Jesse E. Wilson

◆ ◆ ◆

BIBLE LITERATURE—THIRD TUESDAY, 10:00 a.m.
Mrs. William Milton Kinney, Curator—GR 7931
Fine Arts Room

Calling card privileges at all meetings of this Department

March 19th—Current Religious Events
Mrs. Alexander Campbell Smither
Lecture: The Story of Passion Week, Day by Day
Mrs. Lena Leonard Fisher
Special Easter Music
Ivan Edwardes, Tenor

◆ ◆ ◆

BOOK CHAMBER—SECOND FRIDAY, 10:00 a.m.
Mrs. Jack Vallely, Director—Whitney 2135
Fine Arts Room

March 8th—Class Discussion
Book Reviews

◆ ◆ ◆

BROWNING—FIRST AND THIRD MONDAYS, 10:00 a.m.
Mrs. Francis D. Blakeslee, Curator—DRexel 2121
Fine Arts Room

March 4th—Cleon: a study
Mrs. Francis W. Blackford

Reading: Cleon
Mrs. Harry A. Ford
Discussion

March 18th—Browning's Use of Dramatic Monologue with Readings

Mrs. Julia M. Powell
Selections Illustrating Browning's Versatility
Miss Julia Virginia Cox

◆ ◆ ◆

CHILD STUDY—FIRST AND THIRD TUESDAYS, 2:00 p.m.
Mrs. Charles Toney, Curator—HOLLY 7441
Department Room

Mrs. Harry Lamport, Lecturer

March 5th—What a Child Needs
Mrs. Harry Lamport

March 19th—Diet for the Development of Good Teeth
Dr. M. Evangeline Jordan
Diet for Good Health
Mrs. Harry Lamport

◆ ◆ ◆

DRAMA—FOURTH WEDNESDAY, 10:00 a.m.
Mrs. Walter Johnson Veale, Curator—Whitney 9958
Auditorium

March 27th—Pictures of Faeryland
When Irish Eyes are Smiling—Ball
Fern Staben, Harp
Folk Songs
Lorain Noble Trenham
Farewell to Cucullian, arranged by Kreisler
(An old Irish air)
Emily Korstad, Violin
Elizabeth Champion, Piano
Where the River Shannon Flows—Russell
My Wild Irish Rose—Olcott
Fern Staben, Whistler
Lecture: The Irish Drama
Mrs. W. S. Bartlett
O, Irish Mills—Lester
Believe Me If All Those Endearing Young Charms—Moore

Mrs. Roy Charles Arnold, Soprano
Mrs. Guy Bush, Piano
The Sidhe of Ben-Mor—An Irish Folk Play—
(Ruth Sawyer)
The People:
Bridget Hegarty, a widow, Mrs. J. W. A. Off
Mairin and Barney
Her children, Mairin, Mrs. Walter Hubner; Barney, Mrs. Gretchen Babb
Shiela, her daughter, Miss Lillian Duncan
Nora MacDiarmund, her neighbor, Mrs. Tom P. Robertson

Padraic, a half-witted piper, Mrs. Nellie Multer
Hesetine
Sidhe or faery women, Miss Carol Kierulff, Miss Mamie Nevada Voigt, Mrs. Donald Stent Simpson, Mrs. Helen McClure
Play and stage settings by Drama Workshop
Luncheon

◆ ◆ ◆

FRENCH—FRIDAYS, Mrs. A. Halden Jones, Curator—BEacon 5347
Mlle Madeline Lestier, Instructor,
Solarium

9:30 A. M.: Cours élémentaire
10:30 A. M.: Cours intermédiaire
11:30 A. M.: Cours avancé

DEPARTMENTS

LAW—FOURTH FRIDAY, 10:00 a.m.
Mrs. Arthur C. Hart, Curator—WHitney 7222
Miss Florence M. Bischoff, Instructor
Fine Arts Room

March 22nd—Domestic Relations
Mrs. Kemper Campbell
Minors
Miss Florence Bischoff

◆ ◆ ◆

LIVES AND TIMES—FOURTH TUESDAY, 2:00 p.m.
Mrs. Raymond Tremaine, Curator—500-516
Fine Arts Room

March 26th—Unusual Experiences of My Trip
Miss Elizabeth Ward
Review of a Recent Book
Mrs. George V. Shipley

◆ ◆ ◆

MUSIC—FIRST WEDNESDAY, 10:00 a.m.
Mrs. Roy Charles Arnold, Curator—Atlantic 6948
Fine Arts Room

March 6th—Current Events in Music
Mrs. Ernest James Dill
Illustrative Lecture, Philharmonic Orchestra Concert
Gertrude Ross, Composer-pianist
Lecture Recital: American Indian Opera "We-Wahste"
Mr. S. Earle Blakeslee
Soprano, Florence Blakeslee
Baritone, Chief Yowlache (Yakima Indian)
Luncheon

◆ ◆ ◆

PARLIAMENTARY LAW—FIRST & THIRD MONDAYS, 10:00 a.m.
Mrs. Charles S. McKelvey, Curator and
Instructor—Rochester 5033
Department Room

March 4th—Smalltown Club 10:00 A. M.
Lesson Topic: Lay on the table; take from the table; ratify

March 18th—Smalltown Club 10:00 A. M.
Lesson Topic: Reconsider; rescind

◆ ◆ ◆

POETRY—SECOND TUESDAY, 10:00 a.m.
Mrs. Louis Ward Watkins, Curator—Alhambra 241
Fine Arts Room

March 12th—Shelley: Reformer and Pamphleteer
Mrs. Thorwald A. Probst
Shelley, the Lyric Poet
Mrs. John A. M. Robb
John Keats and the Greek Spirit
Dr. Harvey Eagleson
Keats—Youngest of the Immortals
Miss Adah Yale KleinSmid

◆ ◆ ◆

PSYCHOLOGY—SECOND AND FOURTH MONDAYS, 10:00 a.m.
Mrs. Henry Thomas Wright, Curator—Van Nuys
6020-R-3
Fine Arts Room

March 11th—The Psychology of the Masters of Literature
Mr. O. B. Stade

March 25th—The Meaning of Life
Dr. Clifford S. Barrett

◆ ◆ ◆

PUBLIC AFFAIRS—SECOND WEDNESDAY, 10:00 a.m.
Mrs. Leiland Atherton Irish, Curator—HEmpstead
1141
Fine Arts Room

Calling card privileges at all meetings of this Department

March 13th—International Relations Program
Speaker, Mr. George Gleason
Luncheon

SPANISH—THURSDAYS—Mrs. W. L. McLeod, Curator—HOLLY 7742
Senora Maria Lopez de Lowther, Instructor
Department Room

9:00 A. M.: Clase de Conversación
10:00 A. M.: Clase Intermediaria
10:45 A. M.: Clase Elementaria

DEPARTMENT NOTES

BETTER AMERICAN SPEECH:

The Helen Louise Stubbs Memorial Prize was awarded to Mrs. Margaret Barbrick Purcell, who presented the best biographical sketch in the professional class.

The Amateur Prize offered by Mr. and Mrs. Henry Levinson was captured by Mrs. Louise Ward Watkins.

Sincere appreciation is here expressed by the officers of the department to those who participated in this endeavor, especially to those who did not win. By helping with your co-operation you are now in training for the essay contest, which awaits your contribution, and subsequently for the short story writing.

Mrs. David Douglas Hugh is a well known English scholar. As an exponent of choice diction she is talking over KNX on Wednesday afternoons from 2:30 until 3:00.

March Word List: Tarpaulin, capsule, alternate noun and verb, anthropomorphic, prebendary, anadiplosis, Yaqui, experience, experiment, ferocity, penalize, asseverate, fuliginous, fragile, invidious.

Recommended for study: The Century Vocabulary—Word-book—Greever and Bachelor.

BROWNING:

Mrs. Blackford will discuss Cleon as an argument against Epicureanism. Members of the department are requested to read Cleon in advance, noting especially lines 20 to 151; 245 to 262; and 273 to 335; also bring Browning's poems, note-books and pencil.

Julia Virginia Cox, A. M., Dean of the Department of Speech at Cumnock School, a student of phonetics and drama, will read excerpts from several of Browning's poems to illustrate his versatility and the variety of his poetic expression. Child-like quality, religious fervor, rhythm, lyric quality, philosophical attitude toward life, narrative, and other types will be emphasized.

CHILD STUDY:

Dr. M. Evangeline Jordan, who is to be our guest speaker this month, has spent the past twenty-five years in the interest of better teeth. She is a pioneer in preventive dentistry, believing that there would be few adult teeth problems if infant teeth were intelligently cared for. Dr. Jordan's book, "Operative Dentistry for Children," is now being used as a text book in many schools, and has been translated into the French language.

MUSIC:

Mr. S. Earle Blakeslee has specialized in Indian work for many years. The opera, "We-Wahste," was given in Ontario with forty-eight members of our Los Angeles Symphony Orchestra.

Mr. Blakeslee studied composition both in Italy and Germany.

LAW:

The vitally interesting subject of Domestic Relations will be clearly discussed by Mrs. Kemper Campbell, one of the very able lawyers of Los Angeles.

Miss Florence Bischoff, Instructor of the department, will discuss Minors.

(Continued on Page Twenty-two)



Photo by Boye

MRS. WILLIAM B. HUNNEWELL



Photo by Geo. F. Cannons

MRS. JAMES W. JOHNSON

Better American Speech Department

Mrs. George W. McCoy, Curator

MRS. WILLIAM B. HUNNEWELL, in her recent lecture before the Better American Speech Department, presented information of great value to persons wishing to express their thoughts and the thoughts of others to the best advantage. The following excerpts will afford an insight into how her subject, "Voice and Its Spiritual Value to Literature," was treated.

As a working basis in her class procedure Mrs. Hunnewell chose the following poem:

TELL AMONG THE MOUNTAINS

*Ye crags and peaks, I'm with you once again!
I hold to you the hands you first beheld,
To show they still are free! Methinks I hear
A spirit in your echoes answer me,
And bid your tenant welcome to his home again!*

*O sacred forms, how proud you look!
How high you lift your heads into the sky!
How huge you are! How mighty and how free!
How do you look, for all your bared brows,
More gorgeously majestic than kings
Whose loaded coronets exhaust the mine!*

*Ye are the things that tower, that shine, whose smile
Makes glad, whose frown is terrible; whose forms,
Robed or unrobed, do all the impress wear
Of awe divine; whose subject never kneels
In mockery, because it is your boast
To keep him free!*

*Ye guards of liberty,
I'm with you once again! I call to you
With all my voice! I hold my hands to you
To show they still are free! I rush to you
As though I could embrace you!*

(Continued on Page Twenty-three)

Art and Travel Department

By Mrs. James W. Johnson, Curator

THE Curator of the Art and Travel Department feels that she has been particularly fortunate in the circumstances surrounding her work. Beginning her duties at the time of the opening of the new club house, when the prestige of the name of "Ebell" made it easier to get outstanding authorities to come before us on our programs, she has also had the hearty co-operation of our own members, who have so generously given of their time and ability. The problem has never been to find something for a program, but to choose from the abundance of material available, the thing that would best round out the theme that she had in mind. She wishes to thank, at this time, all those members who have taken part on the programs, those who have, by their suggestions or influence, enabled her to get speakers, and those who, as department workers, or as attendants at the meetings have contributed to their success.

One of our recent speakers said that she had never addressed so sympathetic and responsive an audience. This is a real tribute to our department personnel, as well as to our club spirit.

With only seven meetings a year, it has been impossible to do much that the Curator would have liked to have done. The temptation to ask for two meetings a month was strong, but the conviction that we need, in Ebell as in most other clubs, not more meetings, but more time and incentive for personal study, not more opportunity for absorbing, but more stimulus for digging, has deterred her. If any member has been started on a new train of thought or a quest for first-hand information, the objective of the department has been, in so far, attained.

The modern approach to life is more and more the art approach. While it is important to know our Art History, our Period Furniture, our Orders in Architecture, and our Galleries, how much more important it is to have the discrimination to enable us to sift the good from the bad of any period, to place together those things that belong together, that speak the same language, though they may be ages apart in time of production. Art is a continuous development in cycles, an ascending spiral.

Every once in so often we go back to a study of fundamentals, followed by strong simple work, growing skill in technique, mas-

(Continued on Page Twenty-four)



From left to right: Mrs. Frank Karr, Mrs. Edward W. Forgy, Mrs. William H. Smith, Mrs. George H. Mosher, Mrs. W. Harry French, Mrs. L. C. Norris, Mrs. J. W. A. Off, Mrs. Edith B. Isaacs, Mrs. Harry J. Tiemeine

Suggestions from the Sub-Chairmen of the House Committee

Few of Ebell members realize what a great amount of detail work is required that the club house may be kept in order, decorated on proper occasions, provided with luncheons, teas and adequate telephone service.

In the January issue of the magazine Mrs. Stanbery told of her work as chairman of the house. Under her supervision ten committees operate, each having a definite work. Some of these committees perform their important tasks in such an efficient yet quiet way that the members of the committee are rarely seen or appreciated.

Mrs. John B. Long, chairman of furnishings, has the responsibility of seeing that the furnishings are kept in the place intended for them, arranged as the decorator intended them to be especially in the reception room and tea room. When new furnishings are needed it is her duty to ascertain prices and with the approval of the board buy what is needed.

Even in a house so new as ours repairs and adjustments are occasionally needed. Mrs. Lyman B. Stookey, with the assistance of Mrs. Frances Stribling, the house manager, looks after these details.

Ebell's largest committee, which functions every Monday afternoon throughout the entire club year, is the tea committee consisting of two hundred and twenty-three members with Mrs. Harry J. Tiemeine chairman.

Each month has a new hostess and new assistants working under the general chairman and her assistants.

The club policy of Ebell is to have as many members as possible take some active part in the work of the club and the Tea Hostesses are carefully selected by the executive committee.

Since the opening of the club year over nine thousand cups of tea have been served in the beautiful tea room thereby adding

a delightful spirit of hospitality at the close of the Monday programs.

It may be of interest to note the cost of the Monday afternoon teas. For October the cost was \$162.10, for November \$123.13, and for December \$105.87 making a total of \$391.10. That may seem large when you realize you have only one cup of tea and one or more little cakes with lemon and sugar. But Mr. William Harrison Smith, chairman of commissary, says the service is the expensive part. She suggests that as the afternoon tea is supposed to be, and really is, a pleasant, profitable and social hour, please let us not hurry too much.

The members of the luncheon ticket committee sell tickets, collect them at luncheons and are hostesses in the dining room. Mrs. Frank Karr, the chairman, with her committee suggests that each club member purchasing her luncheon ticket look at the date before leaving the office as in a theatre. The committee appreciates the co-operation of the club members in taking their places in the dining room which the tickets indicate.

Parties of any size may be arranged for at the luncheons with a table to accommodate the number of guests.

Some club members have a mistaken idea as to the duties of the ticket committee. In order to facilitate the committee's work as well as to secure the service desired, the committee suggests that members keep in mind that the information desk at the front door is the reliable source of information, that the ticket office is not the check room or the lost-and-found office and that the members of the committee do not assist in serving the luncheons.

Several times during the year Ebell has entertainments which require the services of a special occasion decorating committee. All flowers, drapes, articles or anything needed in decorating are furnished or col-

lected by the committee and it is being responsible for the care and return to its proper place of anything used.

The members of this committee endeavor to carry out ideas appropriate for each occasion to make the event worthy of Ebell. Mrs. L. C. Norris is the chairman.

Mrs. W. H. French is chairman of the Wednesday luncheon decorating committee. The work is divided so that each member serves two Wednesdays each month, reaching the club house at 9:30 in order to attend departments later. Before the holidays, the flowers were donated by the members of the committee. Since then the fund derived from the sale of the flowers used at the luncheons has been used. This fund is not very large and the committee is anxious that it be remembered that all flowers are for sale after the luncheons. Those not sold are taken to the "olarium for the afternoon teas or sent to the Ebell Junior meeting.

The committee of decorations for the theatre stage for Monday afternoons consists this year of twenty-one members, which includes the chairman, Mrs. John W. A. Off, and two assistant chairmen. Two members serve for one month with the chairman. A budget is formed by an assessment of fifty cents each. Flowers are brought by the designated members on duty when possible. However, it is expected that any member of Ebell who has garden flowers will assist in this work by offering some to the chairman. It is the aim of the committee to make an attractive setting for Ebell's President, and those participating in the programs.

The work of the office telephone assistance is handled by three members, including a chairman, Mrs. Edith B. Isaacs, and two assistants. Each one is asked to give one day a week to assist in the office, by answering the telephone and replying

(Continued on Page Sixteen)

Program for March

Roy Chapman Andrews, Leader of the Third Asiatic Expedition---The Newest Discoveries in the Gobi Desert with Remarkable Still and Motion Pictures

MINA HAGER, the artist of Monday, March fourth, is an American educated in her own country, who went to Europe and conquered recognition in the concert world.

She is the possessor of a rich contralto voice and presents a program of variety and versatility, ranging from the sixteenth century madrigal to the most complicated modern score.

She has attained considerable distinction as an exponent of Modern Music, knowing that new ideas have always had a hard fight to find acceptance, and that truly worthwhile compositions remain in oblivion because there is not the right interpreter for them. She feels that someone must believe in modern compositions and give them a hearing, and that the public will gradually become used to that which at first seems harsh and unattractive, if the tune becomes familiar to their ears.

Miss Hager has sung in the Chicago Opera, with the Berlin Philharmonic Orchestra, and before the very critical audiences of London and New York. Last year she was a soloist at the Hollywood Bowl.

On Monday, March eleventh, ROY CHAPMAN ANDREWS, who has just returned from a 5000-mile journey by automobile and camel caravan in the far-off Gobi Desert regions of Mongolia, is to tell of his experiences as head of the Third Asiatic Expedition, which is under the sponsorship of the American Museum of Natural History in co-operation with the American Asiatic Association and Asia Magazine.

Mr. Andrews has just completed the fourth year of his efforts to find direct evidence of prehistoric man in Asia. He is the man who astounded the scientific world a few years ago by the finding of the dinosaur eggs. In the 1926 expedition he found human cultures of a race that probably lived 20,000 years ago, which was the first direct evidence in support of his theory of the Asiatic origin of man.

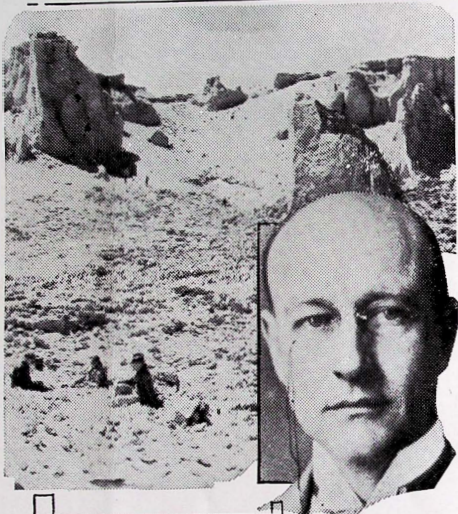
Outstanding in the work of the 1927-28 expedition is the finding of certain fossilized bones of a prehistoric monster surpassing all other known mammals in point of size. From the bones already unearthed, it is quite possible that this prehistoric monster was as long as an ocean liner. Many other interesting discoveries were unearthed in the Gobi sands.

It is an interesting fact that, wherever possible, duplicate specimens are being collected for a natural history museum at Peking for the Chinese government, which is co-operating in every way with Mr. Andrews' party.

Dr. Andrews will talk on "The New Discoveries in the Gobi Desert." There is much real drama in his story because of the fact that the expedition was compelled to face bandit hordes, terrible sand storms and the constant civil war strife prevailing in China. He was able to bring back a splendid pictorial record which will be shown in his own exclusive motion pictures, which depict a panorama of prehistoric and modern life as it is found today in this quaint, far-off corner of the world so little known to Americans.

JOHN V. A. WEAVER, the speaker of Monday, March eighteenth, is unique in modern American literature as creator of the only serious poetry in the "American Language." In addition he is a novelist, a contributor of short stories and articles to all the important magazines, a dramatic critic and a writer of movies. He was until recently Literary Editor of the Brooklyn Eagle, and his life as such has given him a personal acquaintance with practically every writer, of whatever prominence in America today, and many in foreign lands.

Besides his first book of poems "In American," he has written "Finders" and "More in American," delectable poems, now filled



ROY CHAPMAN ANDREWS

with a chuckling humor, now expressing a real pathos, always written simply and sincerely, not in the usual elegant language of the usual poets, but in the vernacular in which most Americans think and talk.

Very recently he published his first novel, "Her Knight Comes Riding."

Mr. Weaver will speak on "The Interpreters of the Jazz Age," as personalities and creators.

On Monday, March twenty-fifth, Mrs. JACK VALLELY will continue her regular fourth Monday book reviews.

MONDAY program notes accompanying are copied each month verbatim from the publicity sent out by various lecture bureaus to the program chairman. They do not express the personal opinion of any Ebell member, but they tell what others have said about the artist engaged. They are intended to serve as a helpful guide to the most profitable point of view in regard to the work of the lecturer or musician under consideration.

SOCIAL WELFARE ACTIVITIES

OFFICERS

- Mrs. Charles Egleston Crary
Chairman
- Mrs. T. J. Fletcher
Chairman Practical Relief
- Mrs. Samuel Emerson Faroot
Chairman Rest Cottage Association
- Mrs. Alfred W. Rea
Chairman of Scholarships
- Mrs. WILLIAM J. WILSON
Chairman of Benefits



Photo by Boye

Mrs. CHARLES EGLESTON CRARY

EBELL REST COTTAGE OFFICERS

- Chairman.....Mrs. Samuel Emerson Faroot
- Asst. Chairman.....Mrs. O. B. Hutchings
- Secretary.....Mrs. Walter E. Barrett
- Treasurer.....Mrs. W. F. Hackett

DIRECTORS

-Mrs. A. Bennett Cooke, President 1928-1931
-Mrs. William Read, Auditor 1926-1930
-Mrs. J. A. McCusker 1927-1930
-Mrs. T. Paul Jones 1928-1931
-Mrs. Jack Armstrong Jevns

SOME thirty or more years ago our Ebell was organized primarily as a Study Club. Still in its subconscious mind must have been the idea of service for the motto they chose was *Ich Dien*, I serve. That idea has influenced Ebell all these years until now we have a regular Social Welfare department consisting of Practical Relief, Rest Cottage and Scholarships.

A few years ago, Ebell decided to enlarge its scope and the Ebell Juniors became part of our organization. Showing that the leaven of service was still working, they also formed a Social Welfare department and took under their wing several families of small children, clothed these children, looked after the families at Thanksgiving and Christmas, not only with substantial dinners, but with gifts for all.

As these Juniors passed the age limit and came into Ebell proper they not only left a well established Welfare department behind them but could not be happy until they had established another department for themselves, The Lives and Times, and so the good work has gone on.

This year has been a busy one. In September, Practical Relief was busy outfitting our Scholarship girls and getting them ready for school or college. As we have twenty-one on our scholarship list you may know your Practical Relief committee had their hands full, but it was a labor of love and they were as happy in outfitting our girls as the girls were in receiving their pretty clothes. Of course we never forget our Rest Cottage guests. When any of them needs a new dress or coat or something to make them comfortable, Practical Relief gets right to work and often makes an entire outfit so that the guest in question may be well dressed when she is able to go to work once more.

In the early part of December a jelly and jam shower was given for the Helen Mathewson Club to which a number of our Scholarship girls belong. Tea was served in the Solumium by the Practical Relief committee and each Ebell woman as she came in had a gift for the girls' cun-

board so that before the afternoon was over there was a substantial contribution to their store of goodies for the winter. As Christmas approached the Christmas spirit pervaded everyone. The Rest Cottage women raised funds among themselves and made plans for a wonderful Christmas dinner for our Rest Cottage guests, past and present. Invitations were sent out and accepted and one hundred and thirty sat down to a bountiful turkey dinner. There was also a gift for each guest. While the Rest Cottage committee was busy getting ready for its celebration Practical Relief, under the fine supervision of its chairman, Mrs. T. J. Fletcher, was preparing to give Christmas cheer to the needy ones of the Disabled Veterans Club, Post No. 1, and

(Continued on Page Seventeen)

Ebell Rest Cottage

Yearly Memberships

Associate Dues.....	\$1.00
Contributing Dues.....	\$2.00 or more
Sustaining Dues.....	\$12.00
Life Membership.....	\$100.00
Memorial Membership.....	\$100.00
<i>Will you help us carry on this work?</i>	

Rest Cottage Memberships from July 1, 1928, to February 1, 1929, are as follows: Associate 556, Contributing 182, Sustaining 50, Life (new memberships) 5, Memorial 4, Guest Associate members 30. The goal of Rest Cottage Association is "Every member of Ebell a member of Rest Cottage Association."

Practical Relief

IN ORDER that work can be done we must have willing workers, and the special message this month of Practical Relief is an urgent call to the members for more workers. Sickness and bad weather have depleted our ranks and consequently our supplies are very low. The hours are short—work begins at 9:30 A. M. and ends at 3:00 P. M. with a pleasant hour for lunch. We do have good times together besides the satisfaction of doing a good work.

Our work with the girls has been very satisfactory this past month. We outfitted two of our high school girls with lovely white dresses. One pretty little girl, when she saw her dress, cried with joy. The mother of the other girl wrote that without our help her daughter would never have been able to graduate.

If every member who has sent in garments could see the girls when they are able to get a new dress or coat we feel sure that she would go through her things and send in those suits, dresses, and coats which she has put aside and no longer cares to wear. Practical Relief's stores are sorely in need, so do send in everything of women's, men's, or children's clothing possible, curtains, or household articles, for we can find a place for everything.

Mrs. Alfred W. Rea, Chairman of Scholarships, reports an Endowment of \$57,000.00, the interest of which, together with special scholarships and contributions from interested members of Ebell, is taking care of twenty students. One of these, a graduate of the University of California at Los Angeles, is at the University of California taking advanced Library work. The other nineteen are following different courses of instruction at local universities.

Mrs. Landon Horton, a life member of Ebell, a life member of Rest Cottage Association and a member of the Membership Committee of the Rest Cottage, enriched our treasury by giving a memorial membership for her mother, Mrs. Joseph Kurtz at the holiday season.

EBELL'S POETRY PAGE

Contributed by Members of Ebell

LIFE LINES

Grace Frye

Pencil Pal, I need you. Scheming, dreaming,
You must help this telling.....spelling
Swift as memory beckons.....reckons.

Brave old pal, my pencil. Scribbling, quib-
bling,
Knows that time is fleeting.....beating
Me to life's swift ending.....lending
Minutes only for reciting.....writing.

CLUB CANTOS

Grace Frye

Inebriate of clubs am I
Intoxicating—body, mind.
Reform me not, lest sober hours
Dull duties bring of womankind.

Clubs are not man-made machine
With engine, cogs and wheel
But women's clubs are made of soul
Thank God; That's why they feel.

Clubs should not be sheltered
From worlds undisciplined.
As well to wrap a fire
In wool, because of wind.

Sharp words can cut and kill
Surely as with knife.
Careful then, word surgeons,
Heart is in club life.

THE JOSHUA TREE

Ruth McClintock

Bravely you lift your tortured arms
Above the brown expanse of desert sea
And as the countless seasons come and go
You seem to stand on guard forever wait-

ing
For that long prayed for day when water
Brings the desert's great awakening.

DAY BREAK

Ruth McClintock

Sad is the wind's trumpant song
As it swires in the tree tops high
Then a hush there comes—ere the break
of day
While souls—just passed—go by.

GLIMPSES

Ruth McClintock

A breath of flowers—a note of song
Bring haunting thoughts of you,
But I listen in vain
For your voice, my dear,
As memory takes me along the way
Through years that are past
And days long gone
Down that golden path to yesterday.

EXILED

Pauline Curran

(From Artland Magazine)

A laggard wind stirs in the waiting trees
That throw their nets for every vagrant
breeze.

The moon has hidden tears behind her veil.
Her stolen glory fades, her footsteps fail.
A life-buoy moans an endless dirge at sea,
While honking geese break through my
revery.

Were I to rise and lead with a glad cry—
I know the land where my swift wings
would fly!

SAN GABRIEL

To E. F. W.

San Gabriel: Where the padres dwelt,
And tolled, and preached, and taught,
The altar where the Indians knelt,
To offer gifts their hands had wrought.

San Gabriel: Link with the historic past,
Glamorous with tradition and romance,
With glittering pageantry o'er cast,
Spain's show of swords, and love of dance.

Bold Serra's home for many a day
As he journeyed from South to North,
And trod alone the King's Highway
On the missions which sent him forth.

And one fair morn came another guest,
A stranger to Spanish priests,
One Jedediah Smith, in quest
Of food for men and beasts.

Which the long trek across the plains
Had caused to be depleted quite,
Here he lingered; and took pains
His commentary keen to write.

Then came Fremont and '48
With the Yankees in their wake,
Adventurers in the new-born State
Their dreams 't achieve, their fortunes make.

To you and me all this seems far-
Away and long ago
Remote from our experience
Of either joy or woe.

The day which we remember best
Within these Mission walls:
The moment which crowns all the rest,
Our memory oft recalls

Is not historic or sublime,
Neither pageant nor high mass,
Nor is it worthy of a rhyme
But we may let that pass.

That moment made us one in fact
As we are one in soul
And gave each what the other lacked
To reach his wished-for goal.

The years since then have brought small
change
"For better or for worse,"
Nor shall Love think it even strange
To sing thus in poor verse.

A GAVELCOUE

Grace Frye

With presidential velle
She talks of politics
Instead of art and travel.

It takes an awful nerve
To silence, awe and swerve
Clubwomen with a gavel.

PARTNERSHIP

Grace Frye

I lost my club unthinking
'Twas valuable to me
So filled with inspiration
Small blame for larceny.

But when I sought and found it
My woman's legacy
I learned that inspiration
Belonged to club . . . thru me.

THE ALIEN

Mrs. Guy Bush

A gypsy woman smiled at me today
In the crowded city street.
Neat, orderly people all around me
Sober clerks and stout housewives
Intent on their own small affairs,

Then suddenly the flashing of her smile,
White teeth in a swarthy face,
And a red bandanna around her throat,
Somewhere a glitter of beads

As we passed each other,
There were two other women with her,
And she spoke to them quickly in her
guttural voice;
I know not what tongue she spoke,
But I think it was the language the trees
speak

When the wind passes over them
That the brooks murmur rapidly
To the flowers along the bank,
For the winds and waters and wide hills,
All things that live beneath the blue sky,
That know not man-made ways, but the
ways of God

With the sun and the green earth in spring,
Forests and open fields,
Woodsmoke rising in the still air,
A circle of dark faces around the fire,
The first stars in the quiet sky,
A snatch of wild song flung carelessly into
the night

These were the things I saw when she had
passed by.

SOME DAY

Helen Brown (Mrs. Chester Wallace Brown)

America must some day sit erect,
And open wide her eyes upon her crimes—
Too long her sleep has held her in its grasp,
And made her deaf to all our loud lament.

Why should the artist genius slave and die
For lack of faith, and food that gold will
buy,
While graft grows sleek and fat from poor
man's hands,
and gold is worshipped by the most of men?

A poet must be dead an hundred years,
Before approval marks him for her own.
Why can't we see the worth in fellow-men,
And speak our praise where now we utter
scorn?

THE GARDEN

Helen Brown (Mrs. Chester Wallace Brown)

The spirit of a garden is not trapped
By walls and gates and made a slave to
man;

It lives in God's great open space content,
And needs not greed, but comes at love's
command;

It looks in pity on the thing man makes
Of straight hard paths and jumbled beds of
plants,
And points with love to meadow, plain and
hill,
Where things are left to grow at God's
goodwill.

A garden is a place of sweet commune
Between the soul and Him who made us all;
A garden starts and ends God's Holy Writ,
And spans creation's dawn and close of
time.

EBELL JUNIORS

Miss Elizabeth Wheat.....President
WHITNEY 7239

Mrs. Georgia Bennethum Toolen.....
.....First Vice-Pres.
HEMPSTEAD 9310

Miss Frances Jamison.....Second Vice-Pres.
WHITNEY 7365

Miss Lois McQuiston.....Secretary
ROCHESTER 3782

Miss Ruth Kennedy.....Treasurer
WASHINGTON 9201

JUNIOR NOTICE

The March business meeting and pro-
gram will be held in the Fine Arts Room,
March 13, at 2:00 P. M.

The program for March will be a Hi-
Jinx given entirely by the Lives and Times
department. They are presenting two
pantomimes under the direction of Mrs.
Charles Chamberlain.

The fourth of the series of lectures will
be on Mrs. Herbert Hoover, and will be
given by Mrs. John D. Fredericks.

The March card party will be given at
the home of Velma and Selma Lytell, 276
South Plymouth, on Wednesday, March
27, at 2:00 o'clock.

The permanent list will be discontinued.
All those wishing to come must call Mrs.
Ruth Craig before Monday, March 25.
Telephone OREGON 8364.

The Junior Rummage Sale will be held
March 7, 8, 9.

Any discarded clothing will be gladly
received by the welfare committee.

The clothing will be called for by notify-
ing Mrs. Ellsworth Ross at OXFORD 3981.



Photo by Lansing Brown

MISS RUTH KENNEDY

EBELL JUNIORS VALENTINE PARTY

A GROUP of Ebells Juniors under the
guidance of Mrs. Frank Wilkinson
arranged the Valentine Dinner
Dance that was such a complete success on
Thursday evening, February seventh, at
the club house.

Mrs. Lawrence Allen, chairman of dec-
orations, and her committee were respon-
sible for the tables so beautifully decorated
in varied colored sweet peas and candles.
Strewn over the tables were red hearts
pierced with arrows.

Red and white Pierrots and Pierrettes
marked the places and held a valentine for
each guest.

During the evening a special dance num-
ber was offered by Gretchen Mayer, a
pupil of the Misses Lytell. Miss Mayer
was accompanied at the piano by Mr. Robert
Smith.

Everyone danced until the last strains
of music were heard and had a good time.

The Junior Scholarship Fund was in-
creased by many more dollars.

An interesting feature adopted by Ebells
Juniors this year has been the ten-minute
talks on famous women at the beginning
of each meeting. As club members who are
alert to public affairs we feel that interest
is even more keen toward women who
have given a large share of their lives to
public activity. So throughout this year
we are to hear about some of the "Famous
Women" either of the past or present gen-
eration.

EDNA ST. VINCENT MILLAY

Edna St. Vincent Millay, possibly the
most gifted of the younger lyricists, was
born February 22, 1892, at Rockland,
Maine. After a childhood spent almost en-
tirely in New England, she attended Vas-
sar College, from which she was graduated
in 1917. Since that time she has lived in
Greenwich Village, New York City.

Besides her keenly individual lyrics,
Miss Millay has a quantity of short stories
under various pseudonyms, has translated
several songs, and has been connected with
the Provincetown Players both as play-
wright and performer.

Her friends and teachers of Camden,
Maine, knew she had the fairy gift long
before the world found it out. But in a
certain poetry contest she received only
honorable mention because, unlike the other
children, who were pious and dutiful and
spoke of righteousness and sin, her poem
was the fresh and honest picturing of life,
with a total absence of commonplace and
insincere moralizing.

Although the bulk of her poetry is not
large, the quality of it approaches and some-
times attains greatness. Her first long
poem, "Renascence," was written when
Miss Millay was scarcely nineteen; it re-
mains today one of the most remarkable
poems of this generation.

—MRS. DANIEL GAINES HON.

PRINTING AND PUBLISHING SERVICE....

THE PRODUCTION OF FINE BOOKS, magazines and other printing, as well as a publishing, editing and marketing service, is all a part of our regular day's work.

Perhaps you have a printing or publishing problem—if so, bring it to the most thorough printing and publishing institution on the Pacific Coast.

Wetzel Publishing Co., Inc.

336 SOUTH BROADWAY

TUCKER 4145

LOS ANGELES

BILTMORE GARAGE



Grand Ave. at Fifth

- Centrally Located Directly Opposite Biltmore Hotel.
- Official Garage Auto Club of Southern California.
- Fire Proof. Aisles Always Clear and Clean.
- Every Motor Service (except repairs.)
- All Work Guaranteed.

Telephone M 2ual 3131 Absolutely Reliable

LOS ANGELES, CALIFORNIA

GEORGE F. CANNONS

Camera Portraits

8165 Sunset Blvd. CRestview 8102

You need never have "CREPEY SKIN"

Use "Key to Beauty" Organic Gland Cream, and overcome crepey skin, fine wrinkles and relaxed contour. \$5. and \$8. the jar

Try a Marvelous Vienna Method Nerve Toning Facial at Mme. Bergeron's Salon. VA 6816

MME. ANNA M. BERGERON 1221 Haas Bldg., Los Angeles AND ALL LEADING STORES

McGulloch and Ever Ready Drug Stores—Young's, Inc.



MME. BERGERON



"KILSNAYL"

Sure death to SNAILS and SLUGS. NON-POISONOUS and may be used freely as it does not attract dogs, cats, poultry, etc.

KILLS BY CONTACT and after watering, dissolves and percolates through the soil, killing eggs and larvae. Also valuable as a soil food, putting new life into trees, shrubs, roses, etc., after killing insects destroying feeder roots.

Call or Write for Free Sample FERTILSPRAY CO. (VA 8638) 941 West 7th Street

Ebell's Library

"When all that is worldly turns to dross around us, books only retain their steady value." —Washington Irving.

We have added many new books to our library during January, in fact so many, that we have established a "New Book" shelf right back of the desk. On this shelf you will find all the new books, both fiction and non-fiction, that happen to be in. In order to buy more new fiction we have adopted the plan, used in many libraries, of buying the new books and charging ten cents a week for their circulation until they have paid for themselves; then they will be added to our regular book collection. These newest fiction books are kept on a shelf, also back of the desk, marked "Pay fiction." Do not fail to look for this shelf when you come into the library.

The Case of Sergeant Grisha by Arnold Zweig. This is a great war story of a Russian prisoner, a remarkable book, touching, extremely interesting, significant, a document in humanism, and a drama that is both comedy and tragedy.

Elizabeth and Essex by Lytton Strachey. A book not to be missed, a brilliant historical study; worthy of comparison with Macaulay at his best.

Story of Oriental Philosophy by L. Adams Beck. A brilliant exposition for Western minds of the lives and teachings of the philosophers of the East.

Magic Island by W. B. Seabrook. The Literary Guild selection for January. An interesting book of travel dealing with the strange island culture of Haiti.

Fringe of the Moslem World by Harry A. Franck. A travel narrative of Egypt, Palestine, Transjordan, Syria, and the "new" Turkey.

Old Buddha by Princess Der Ling. The life story of the great Manchu Empress.

Scarlet Sister Mary by Julia Peterkin. The life of the Gullah negroes in South Carolina, dramatic in quality and highly picturesque.

Francis Wilson by D. B. Wyndham Lewis. The story of the poet who was the king of vagabonds and the vagabond who was the prince of poets.

We also have books to sell in our library. These you will find in a display on the library table. They consist of books which have been given us, but being duplicates, we do not need them. Because of this you will find from time to time some very interesting books, many of which are out of print and almost impossible to buy in the stores. By patronizing your library in this way you will help us to buy the books we need. Watch this table every week as the selection changes constantly.

The following books were given to the library during the month of January: Queer Judson, Lincoln; Ellen Lewis, Singmaster; Woman Named Smith,

BILTMORE HOTELS ON THE COAST



LOS ANGELES BILTMORE

THE MOST OF THE EAST! SANTA BARBARA BILTMORE

BY THE SUN/SILKENE SEA FLINTRIDGE BILTMORE

ON A MOUNTAIN TOP NEAR PASADENA ARIZONA BILTMORE

ON THE DESERT NEAR PHOENIX

John H. Underhill, New York President, International Executive Vice President, Charles Board Vice President.

Luncheons and Dinners deliciously prepared LOS ALTOS TEA ROOM 4121 Wilshire Blvd. at Bronson Phone DRexel 8881 Entrance through Los Altos Apartments Lobby Luncheon served from 12 to 2 p.m. Dinner from 5:30 to 8 p.m.

Oemler; Cassell's Classified Quotations, Benham; Lyric Echoes, Waters; Poems of Pleasure, Wilcox; New Foot Prints in Old Places, Stiles; Fundamentals of Creative Writing, Buck; Course in Narrative Writing, Buck; Tree of Heaven, Sinclair; Piper's Pee, Adams; How to Write Photoplays, Emerson; O'Malley of Shangannagh, Byrne; Makers of English Fiction, Dawson; Woodsmoke, Young; Famous Buildings, Barstow; Studies of Contemporary Poets, Sturgeon; Notes on English Literature, Emery; Shakespeare Explained, Lunt; Riceyman Steps, Bennett; Family Library of Poetry and Song, Bryant; King, Kingsley; All the King's Horses, Stevens; Swan Song, Galsworthy; Charwoman's Shadow, Dunsany; Bridge of San Luis Rey, Wilder; Understanding Human Nature, Adler; Foe-Farrell, Quiller-Couch; Children of Divorce, Johnson; I. Mary Maclean; Wonderful Year, Locke; Doodsday, Deeping; London River, Tomlinson; What's the World Coming To?, Hughes; Waves of Destiny, Pedler; Complete Club Book for Women, Benton; Green Bay Tree, Bromfield.

The BOOK PAGE

Books are true friends that will never flatter nor dissemble; be you but true to yourself - - - and you shall need no other comfort.— Bacon.

The February BOOK REVIEW

By MRS. JACK VALLEY

Yonder the long horizon lies, and there by night and day The old ships draw to home again, the young ships sail away; And come I may, but go I must, and, if men ask you why, You may put the blame on the stars and the sun and the white road and the sky. —GERALD GOULD.

- Roads to the North.....By Charles S. Brooks
- Paris Salons, Cafes, Studios.....By Sisley Huddleston
- Paris Vignettes.....By Elizabeth Eaton Burton
- The Spanish Pageant.....By Arthur Stanley Riggs
- Let's Do the Mediterranean.....By Carveth Wells
- An Italian Holiday.....By Paul Wilstach
- Adventures of an African Slave.....By Captain Canot
- The Last of Free Africa.....By Gordon MacCreagh
- An Indian Journey.....By Waldemar Bonsels
- An Avatar in Vishnu Land.....By Stanley Warburton
- Beneath Tropic Seas.....By William Beebe
- The Magic Island.....By W. B. Seabrook
- On Wandering Wheels.....By Jan and Cora Gordon

My dear Dorothea:

True, I have neglected you, but since I have finally done just what you have wanted me to do for lo, these past five years, I know that I will be forgiven and even have an interested audience as I write.

Remember Lorita Valley who gave that stunning book review the time I took you to Ebell? Well, she became real big hearted and decided to pass on her fund of knowledge by establishing "The Book Chamber" last year.

We were awfully serious and did some wonderful things. This year we are doing some equally wonderful things but more in the "Round Table" manner. I mean, we have such delightfully informal discussions. Heavens, you would never think we are the representatives of such a dignified club. Of course Clayton Hamilton in his "A Manual of the Art of Fiction" (which we have such) has given us much leeway by saying that "no subject is immoral for treatment in fiction."

You can readily see that with such "freedom of the press" we are practically unhampered and the members have treated their subjects in such a natural way that we have had a gorgeous time.

This year I have been honored

by being named Secretary of this erudite body. I never secretaryed before, but they are good enough to allow me to continue and the subject matter is so good it practically writes itself.

Mrs. Valley just gloats when the reviewers' knees do a castanet before they take the platform,—she says that makes them do much better work. I quote her accurately—"I do hope you are just scared to death." I was. Last year I did a review of "Emperor Francis Joseph" by Eugene Bagger. When it was all over I said to her, "Goodness I shall have to give my review all over." "Why?" said she. "Well, I forgot to kill Elizabeth." She had such a tragic death, you know, and it was a pity that my audience missed the pathos of the situation.

We had some wonderful biographies last year. One of our members, Mrs. Resor, comes all the way in from Redlands. She took that very uninteresting man Louis XVIII and made his biography one worth listening to. Disraeli by Mrs. Dick Smith, Mussolini by Mrs. Crabbe, and Talleyrand by Mrs. Day were some of the outstanding ones.

Fiction was well handled by the members and, do you know, it is amazing to hear what these

amateurs can do when they have to. Of course, Mrs. Valley has given generously of her time in coaching her class for public appearances, but she is so cold-blooded in what she expects us to do! Her faith will move mountains and she just tells us what to do and we go meekly forward in fear and trepidation and do exactly what she tells us to. A wonderful teacher was lost in that fine lecturer.

I must tell you something about our class discussions. By the way, do you happen to know "the purpose of fiction?" I didn't. The purpose of fiction is to present some great moral or truth by giving us an imaginative series of events. Doesn't that sound elegant? Here is some more: No subject is immoral for treatment, but the manner of its presentation, that is, whether it is honestly or dishonestly handled, may brand the book as moral or immoral. A niceness in the choice of subject matter and a dishonest smugness in handling it will not make a book moral, as for instance, the Elsie Dinsmore series. Whereas, a fearless and honest interpretation of a subject for which we have a natural distaste may be entirely moral, although we may not enjoy reading it.

Here are some more interesting points I picked up. There is a marked difference between a resumé, a criticism and a review. The resumé tells the story briefly and unadorned. The criticism does not necessarily go into the story, but views it entirely from the technical standpoint, and is usually left

(Continued on Page Twenty-four)

Privately Printed BOOKS

EVERY YEAR we make a number of books intended for private distribution. These books cover a wide range of subjects:

- MEMOIRS
- FAMILY HISTORIES
- GENEALOGIES
- MEMORIALS
- SPEECHES
- LETTERS
- ESTATE BOOKS
- TRAVELS
- ETC.

A few of these books are elaborate and costly, but most of them are not. Our long experience as book makers enables us to make even the least expensive of these books distinctive and attractive. Many such books are included in "The Fifty Books of the Year" Exhibition.

If you have such a book in mind we should be glad to give you our ideas regarding its production.

THE WETZEL PUB. CO. INC.

336 South Broadway Los Angeles, Calif.

LARGEST BOOK SHOP BETWEEN HOLLYWOOD AND DOWNTOWN Circulating Library Wilshire Stationers WA 1860 541 So. Western

FOR ST. PATRICK'S DAY PARTIES BROWN STUDIO 631 So. Olive TU 3004

YE OLDE BOOK NOOK A Good Book is Always a Treasure Latest Fiction, Travel, Biography, Poetry Imported Novelties, Cards, Stationery 6308 Sunset Blvd., at Vine St. HEMPstead 3407

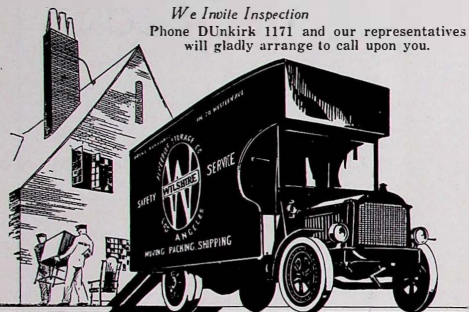
You Can Depend on Wilshire Service

Wilshire gives personal skilled attention to every detail of your needs, whether moving within the city or across the country. We have representatives throughout the United States and Canada. We can ship your household goods anywhere at reduced freight rates. Experienced packers prepare your goods for shipment or storage.

Store your possessions in our conveniently located, exclusive furniture fireproof constructed depository, containing every feature necessary for safeguarding your valuables.

We Invite Inspection

Phone DUNKIRK 1171 and our representatives will gladly arrange to call upon you.



WILSHIRE STORAGE

Phone Dunkirk 1171 116 So. West 7th Ave

For Those Not Slender

Peterson's

LOS ANGELES

LARGER SIZES EXCLUSIVELY

Fashions for the Southland

Spring's smartest offerings in Ensembles, and Street Frocks featuring the new Pastel Tweeds, Sportswear and Prints. Also Street Dress and Travel Coats. For the short, Medium and full figure.

\$59.50 to \$195.00

Imported and recreated custom made Hats in Small, Medium and Large Head Sizes... \$10 to \$39.50

738 West Seventh Street

Club Policy

1. All Monday afternoon programs begin at two o'clock.
2. At all open Monday afternoon programs each member is allowed one guest only, either a man or woman.
3. There is a charge of fifty cents for a guest at all open auditorium meetings.
4. Auditorium guest tickets are sold by a committee at the Lucerne entrance. Members might be served much more rapidly if they have fifty cent pieces when buying tickets. This committee is on duty at one o'clock each Monday.
5. All luncheon tickets are seventy-five cents each and are on sale in the Galeria Mondays and Wednesdays. On other days they may be procured at the office.
6. No luncheon tickets will be reserved over the telephone either from the office or from officers of the departments.
7. It is requested that members asking for turn back luncheon tickets have the exact change.
8. The Green Gate is always open for exit.
9. The door from the foyer to the patio can be open only when a Credentials Chairman is on duty at the office entrance.
10. Please notify the office immediately of any change of address so that the magazines may be delivered. The post office does not forward second class matter.
11. The Club house is closed to visitors all day Saturday.

"Have Them Cleaned the Wilshire Way"

Most Modern Color Restoring, Non-Injurious Process for Thoroughly Cleaning and Renovating All Rugs and Carpets

Wilshire Rug Cleaning Works
2115 Beverly Blvd., N. Alvarado
DRexel 6662 LOS ANGELES



SANITAS is the original cleanable cloth wall covering which has given complete satisfaction to millions of users during the past twenty-five years.

Many of the best decorated homes throughout the country are done in SANITAS because it combines artistic effects with practical economy. SANITAS does not fade, crack or peel. Can be cleaned with a damp cloth.

Before you select your wall coverings, be sure to see the exceptionally attractive SANITAS styles now offered.

Downey & Gotwals

EXCLUSIVE MANUFACTURERS AGENTS
IMPORTED AND DOMESTIC WALL PAPER,
PAINTS AND SUPPLIES

821 So. FLOWER ST. LOS ANGELES, CALIF.
TEL. TRINITY 5425

Suggestions from the Sub-Chairmen of the House Committee

(Continued from Page Nine)

intelligently to the many messages and requests that come in.

The busiest days are Monday, Wednesday and Friday and a member of this committee aims to be on hand on these days.

The chairman believes that in order to insure complete service to the club this committee should be extended to include at least two more members. This would aid on special occasions on the old days not covered by this program in supplying workers in case a regular member is unable to attend on her day.

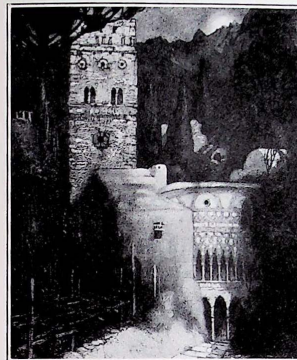
The Solarium is becoming very popular on Wednesday afternoons, where many members and their guests enjoy a game of bridge and the delightful tea that is served at four o'clock.

The committee in charge of this new feature of our club, with Mrs. George H. Mosher chairman, is working hard to please and wishes that more of the Ebells members with their friends would arrange to entertain at least once a month.

The charge is only fifty cents per person with tea and wafers.

Your advertisers are all carefully selected and reliable firms. When you go into their places of business tell them that you noticed their advertisement.

IN THE GALERIA



THE PALACE OF THE DUC DI RUFFOLO AT RAVELLO—BY GENUARO FAVAI

A VARIED and charming collection of Favai adorns the walls of the Fine Arts Room and Galeria during March.

The miniature case holds the usual exquisite exhibit. This month the delicate and subtle portraits by Miss Emma Siboni. Genuaro Favai has taken a leading place in the world of art for twenty-five years. Many honors have been bestowed upon him; great has been the appreciation with which his work has been received in different parts of the world.

Today his great talent, ripened through the years, still produces with unabated fire some of the choicest views ever painted of Italy.

Favai is represented with two works in the Luxemburg, Paris; in the Museum at Philadelphia; Museum at Toledo, Rome; Museum of Udine, Peru, and others. He has been elected a Societaire Honoraire of the Salon at Paris, where his canvases have been regularly and successfully shown. Famous artists, including Rupert Hughes, Philip Laszlo, Gaston Latouche, George Denis, Alexander Harrison, Gedney Bunce and John Barrymore, have been and still are collecting his paintings. America's leading art critic places Favai at the head of the list of modern masters from Italy.

During the last three years he has roamed to the coast of the Gulf of Salerno, making black and white drawings of the Saracenic architecture of this region, some of which are shown. This departure reveals him as a draftsman *par excellence* as well as a clear and brilliant colorist.

A portrait of Favai is loaned Ebell to add to the interest of his exhibit. To Jules Kievits, brother-in-law of Favai, of the Kievits Gallery, we are indebted for this beautiful showing for March.

Miss Emma Siboni is Secretary of The Association of Miniature Painters and director of the Stickney School. Her efficiency in her chosen art has been acquired entirely aboard.

Miss Siboni was awarded the Balch Prize in 1928 and is now represented in the annual exhibit of miniatures at the Public Library.

Bridge Tea

(Continued from Page Five)

be used to purchase this covering. And the committee had a decided feeling that this was a personal affair, and that no solicitation of attendance should be made. They are given for the members of the family, as it were, and are a real test of the quality of affection that lies in the hearts of those who love the club, and are able and anxious to share in the completion of its needs, and adding to its beauty.

Ebell is the club home of its members, and furnishes inspiration and is a source of pride to all who claim its privileges. The matter of its finances is not, and can never be, a burden to any one, because its obligations as well as its pleasures are of interest to every loyal member.

We love the thing we work for; enjoy that which we have helped earn. Ebell needs more than just our moral support.

Social Welfare

(Continued from Page Eleven)

Monday, the day before Christmas, was a busy day for Mrs. Fletcher and her committee.

Seventy-two baskets for as many families were filled to the brim with good things for a bountiful Christmas dinner. The Juniors did the same for the eight families they have been providing for, not only filling the baskets for their Christmas dinners but added toys for the children.

In addition to these special occasions funds are provided for the carrying on of the regular Social Welfare work of Ebell through the activities of the Benefits and Entertainments committee, of which Mrs. William J. Wilson is chairman. The quota for the committee to raise this year is twenty-one hundred dollars. This does not include Scholarships, which has its own special endowment.

ST. PATRICK FAVORS

Party Shoppe

Everything to Make Your Party a Success
Suite 202A - 6719 Hollywood Blvd
HEmpstead 3819 HOLLYWOOD



Los Angeles Public Libraries

THE first effort to provide a public library for Los Angeles took place in 1859. A reading room was established on Los Angeles Street, near the Plaza, and books were donated by public spirited citizens. Eastern newspapers, gathered by messengers of the Overland Mail, were the chief attraction.

The present Los Angeles Public Library System consists of a Central Library—46 branches, and 77 stations. Over 866,000 books are available, and last year, more than 7,600,000 volumes were circulated among Los Angeles homes.

Library system is one of the soundest investments that a community can make.

Less cultural perhaps, but as necessary for community growth, development and happiness, is light, heat and power—electrical of course.

DEPARTMENT OF WATER AND POWER
BUREAU OF POWER AND LIGHT
CITY OF LOS ANGELES





One of the Bedrooms in the Beverly Home of Hallie Cooke Caldwell

The simplicity of this room is in direct keeping with the Architecture, its charm and refinement being brought out through the exquisite hand-made and decorated furniture and furnishings which rest against backgrounds of French grey and ashes of roses, accented with turquoise blue and salmonwood.

Our especially designed and hand-made furniture comes directly to you from our shops without retail profit.

CHARLES H. DODD

(Incorporated)
Designers and Makers of

Exclusive Interiors, Special Furniture, Decorations
Importers of Fine Fabrics, Upholsteries, Floor Coverings

646 South Berendo Street Telephone
at Wilshire Washington 7671

FROM THE
DIARY
OF A
SUCCESSFUL
HOSTESS

... Aunt Mildred is a good old scout, at that. I took her with me to the club meeting at Mrs. Neale-Trafford's expecting her to be bored. But she wasn't in the least. . . I don't know whether it was the cordiality of Jeanne and Grace or the unusual refreshments—it certainly wasn't her bridge score. . . The hostess had the Premiere Caterers serve the refreshments—something new for just a bridge party. I wonder if it was her cook's afternoon off.

Phone
DREXEL
3163

Premiere
PASTRIES
CANDIES
ICE CREAMS
(MOSHER-LASHAR, Inc.)
3717 WILSHIRE BLDG. [At Oxford]

The Club Calendar

- Friday, March 1**
Practical Relief; Department Room; 9:00 A. M.
French; Solarium; 9:30 A. M.
- Monday, March 4**
Regular Monday Meeting; Auditorium; 2:00 P. M.
Browning; Fine Arts Room; 10:00 A. M.
Parliamentary Law; Department Room; 10:00 A. M.
- Tuesday, March 5**
Better American Speech; Fine Arts Room; 10:00 A. M.
Rest Cottage Meeting; Department Room; 11:00 A. M.
Child Study; Department Room; 2:00 P. M.
- Wednesday, March 6**
Music; Fine Arts Room; 10:00 A. M.
Luncheon
Members' Tea; Solarium; 2:00 P. M.
- Thursday, March 7**
Spanish; Department Room; 9:00 A. M.
- Friday, March 8**
Practical Relief; Department Room; 9:00 A. M.
French; Solarium; 9:30 A. M.
Book Chamber; Fine Arts Room; 10:00 A. M.
- Monday, March 11**
Regular Monday Meeting; Auditorium; 2:00 P. M.
Psychology; Fine Arts Room; 10:00 A. M.
Applied Design; Department Room; 10:00 A. M.
- Tuesday, March 12**
Poetry; Fine Arts Room; 10:00 A. M.
- Wednesday, March 13**
Public Affairs; Fine Arts Room; 10:00 A. M.
Luncheon
Ebell Juniors Regular Meeting; Fine Arts Room; 2:30 P. M.
- Thursday, March 14**
Spanish; Department Room; 9:00 A. M.
- Friday, March 15**
Practical Relief; Department Room; 9:00 A. M.
French; Solarium; 9:30 A. M.
- Monday, March 18**
Regular Monday Meeting; Auditorium; 2:00 P. M.
Browning; Fine Arts Room; 10:00 A. M.
Parliamentary Law; Department Room; 10:00 A. M.
- Tuesday, March 19**
Bible; Fine Arts Room; 10:00 A. M.
Child Study; Department Room; 2:00 P. M.
- Wednesday, March 20**
Art and Travel Department; Fine Arts Room; 10:00 A. M.
Luncheon in honor of representatives of the Press
Members' Tea; Solarium; 2:00 P. M.
- Thursday, March 21**
Spanish; Department Room; 9:00 A. M.
Drama Work Shop; Fine Arts Room; 2:00 P. M.
- Friday, March 22**
Practical Relief; Department Room; 9:00 A. M.
French; Solarium; 9:30 A. M.
Law; Fine Arts Room; 10:00 A. M.
- Monday, March 25**
Regular Monday Meeting; Auditorium; 2:00 P. M.
Applied Design; Department Room; 10:00 A. M.
Psychology; Fine Arts Room; 10:00 A. M.
- Tuesday, March 26**
Lives and Times; Solarium; 2:00 P. M.
- Wednesday, March 27**
Drama; Auditorium; 10:00 A. M.
Luncheon
Members' Tea; Solarium; 2:00 P. M.

(Continued on Page Twenty-three)

Applications for Membership

It is the duty of any member of Ebell who knows a good and sufficient reason why the following applicants should not be admitted to membership in the club to notify the chairman of the membership committee at once.

REGULAR MEMBERS

- Burrill, Mrs. Stanley S.—Culver City 4218
10335 Cheviot Drive
Endorsed by Mrs. Alfred C. Kuehl
Mrs. Charles Toney
Mrs. C. J. Thorson
- Farwell, Mrs. Felix—OREgon 6735
742 South Spaulding Avenue
Endorsed by Mrs. Lyman Farwell
Mrs. Frank A. Catterin
Mrs. William Harrison Smith
- Hall, Mrs. Robertine Hines—FABer 1432
1438 Kellam Avenue
Endorsed by Mrs. William Reeve
Miss Pauline Curran
Mrs. Charles F. Gray
- McGeagh, Mrs. Myrtle Price—ROchester 8137
2132 Wellington Road
Endorsed by Mrs. Frank L. Gautier
Mrs. Harry J. McCleann
Mrs. Claude C. Coffee
- Oblinger, Mrs. Gates C.—MUTual 3281
330 South Grand Avenue
Endorsed by Mrs. Thomas R. Cooper
Mrs. J. Creighton Mathewes
The Dayton Woman's Club, Dayton, Ohio.

JUNIOR MEMBERS

- Lloyd, Miss Elizabeth—FITzroy 0429
694 South Hobart Boulevard
Endorsed by Mrs. F. H. Nettleton
Mrs. Harry Philip
Mrs. Alfred Rea
- McGeagh, Miss Mary Metcalf—RO 8137
2132 Wellington Road
Endorsed by Mrs. B. Rey Schauer
Mrs. Louis F. Foley
Mrs. J. Irvine Wells
- McGrath, Miss Charlotte M.—DRExel 0551
117 South LaFayette Park Place
Endorsed by Mrs. A. J. Casebeer
Mrs. Harry A. Ford
Mrs. Warren F. McGrath

In Memoriam

- Mrs. Mary Jane Howell Mrs. B. F. Nance Mrs. E. W. Goodan

KATHRYN BROWN

2519 West Seventh St. FITzroy 1276

Gowns Prints Millinery

Attractively Priced, \$19.50 to \$49.50

Announcing
RAE GOODWIN'S
return to
HUDGENS' PERMANENT
WAVE SHOP
401 Brack Shops
where she will resume the practice of her well known EDMOND Wave as well as other systems of Permanent Waving.
Your patronage will be greatly appreciated
Phone TUCKer 2863

For Advertising Space in Ebell
Call TUCKer 4145

The advertising office of this Magazine is located at 336 So. Broadway, on the fourth floor of the Gray Building. Phone TUCKer 4145 for information.—Advertising Manager

“HAIR - A - GAIN”

SCALP and HAIR SHAMPOO

Listen in Radio KFI Tuesday 11:39 to

A Guaranteed Preparation

May Be Purchased

At All First Class

Department Stores.

Drug Stores, Beauty Shops

Georgia O. George

Originator, Inventor, and Sole Manufacturer

KNX Monday 11:00 to 11:30

Club Notes

Following the Monday morning department, sandwiches and coffee or tea will be served in the dining room from 12:00 until 1:00 o'clock, 25c a service.

One of the outstanding social affairs of the club year was the annual luncheon of the Spanish department, Thursday, January 31st.

The activities of the Spanish department are always of unusual interest and this occasion was especially notable for the fine musical program which preceded the luncheon. The program consisted of Spanish songs and dances in picturesque costumes by members of the department.

There were also piano and vocal solos by distinguished visiting artists.

A luncheon, furnished by the members of the department, was served informally in the large dining room to over two hundred members and guests.

Luncheon was followed by bridge. Beautifully decorated prizes were given at each table, also there was a prize.

The ladies of this department are to be complimented on their fine spirit of co-operation and hospitality, which goes to make this one of the most enjoyable departments of Ebell.

Sixty members of the Psychology department of the Ebell Club were the guests of the Department of Philosophy of the University of Southern California on Monday morning, January 28, when that department met in the Hoose Library of Philosophy at the University, and heard Dr. Ralph Tyler Flewelling, chairman of the department, outline the functions of philosophy in the modern university. Following the talk a number of the rare volumes from the philosophy library, which numbers nearly 10,000 titles, were displayed. At noon luncheon was served in the councilors' room of the new Student Union building.

Plans for the new Seeley W. Mudd Memorial Hall of Philosophy, which is to be erected this spring and be ready for occupancy in September, were displayed. In describing the proposed development of the department of philosophy Dr. Flewelling announced that it proposed to establish at the University an international visiting professorship in philosophy which would allow the University to bring to Los Angeles every year some great teacher of philosophy to lecture and carry on advanced instruction.

Arrangements for the meeting at the University were made by Mrs. H. T. Wright, curator of the Psychology department. In the absence of Mrs. Wright because of illness Mrs. Lydia Crossley, assistant curator of the department, presided.—From the University of Southern California Semi-Centennial Commission, City.

Mrs. Joe Crail, Ebell member and former Vice-President of Ebell Juniors, was elected without opposition Corresponding Secretary of the Congressional Women's Club in Washington, D. C. This is a club whose membership is composed of wives of the members of Congress.

On March 20th the luncheon will be in honor of the representatives of the Press.

A happy occasion for the members of the Department of Applied Design and their friends occurred on Thursday afternoon, February seventh, when forty of them visited the Huntington Library and Art Gallery at San Marino.

Much of the success of this trip was due to Mrs. O. B. Hutchings, who supervised transportation for the entire group.

The greater portion of the afternoon was spent in the Art Gallery, among the priceless examples of an art age that will be studied by art students of all time.

By the time this Bulletin is in the hands of the members, The Ebell of Los Angeles will possess a handsome silk American flag, to grace its platform, and four silver trays for the tea urns in the Tea Room.

The acquisition of these much needed articles is made possible through a beautiful and successful party at the Club House on Friday, February first, when sixty-five tables of bridge were filled by members and their friends. Thirty-nine prizes were awarded, all donated, and many of them made by members of the department. Six of these were given as door prizes, twenty-nine as game prizes, and four as special gifts. One to the president, Mrs. A. B. Cooke, one to the general curator, Mrs. J. Elbert Harshman, one to our former president, Mrs. William Read, and another to the curator of the department, Mrs. Lurah C. Davis.

The chairmen of the different committees were: Tickets, Mrs. Florine Wolfstein; refreshments, Mrs. Charles E. Listenthal; decorations, Mrs. John T. Withers; prizes, Mrs. A. E. Rippey; talley, Mrs. Charles Lee Powell; table, Mrs. Charles E. Stanton; accounts, Mrs. Daniel Beecher; music, Miss Ruth Kennedy.

A program featuring club artists included Mrs. Paul Robinson, soprano; Mrs. Grace Inman Ard, pianist; and Mrs. Vernon Stockwell.

RENT A SEDAN

with a WOMAN DRIVER

and help create a new method of income for your Club—ask about the plan at your Club office.

Bonded Careful Drivers

all thoroughly acquainted with Los Angeles and Southern California.

Rate \$2.50 per hour

Members using service not charged for "Waiting" time while attending Club meetings.

Social & Shopping Auto Service

GL. 5990
5705 Melrose Ave.

JASON ROBARDS coming to the Windsor Square in NEW BROOMS

Beginning Thursday evening, February 28th, the Los Angeles public will again have an opportunity of seeing Mr. Frank Cravens' most notable success when the Five-O-Six Players will present Mr. Jason Robards in his uproarious comedy hit of the year, New Brooms. Mr. Robards will be remembered for the brilliant success he attained at the El Capitan Theatre in Hollywood in this same play last season. Mr. Robards will be supported by such well known featured artists as Messrs. Wm. Humphries, Frank Cooley, Ivan Christy, James Devoe, Tom London, Joe Bonner, and Edwin Harris, all of whom have scored individual successes in their various roles.

New Brooms has enjoyed one of the most notable successes in the past decade, having run for two solid years in New York and one year in Chicago, and was voted by critics as Mr. Cravens' most successful effort.

GIFTS-ANTIQUE

Talies and Favors



Exclusive Importations

6757 Hollywood Boulevard Opposite Egyptian Theater

When you buy Quality Products You have taken the first step toward Real Economy

Complete line of —Artists Supplies —Picture Frames & Framing to Order —Domestic and Imported Wall-papers —Paints

Mathews Paint Company

Conveniently located stores—
Los Angeles
Pico and Hill Sts.
Hollywood
Vine at Se ma
Pasadena
Green St. at Oak Knoll
Riverside
762 West Tenth St.
Monrovia
308 South Myrtle St.
Phoenix, Ariz.
134 South First Ave.

MATHEWS
HOME SINCE 1867 DECORATION

Beulah Hughes
Millinery

3725 WILSHIRE BOULEVARD

HERMAN C. SCHMIDT, INSURANCE

Fire, Burglary, Automobile and All Risk Insurance on Jewelry and Furs.

Responsible Companies Represented—Efficient Service—Prompt Adjustments

422 Union Bank Bldg.
LOS ANGELES
VAndike 2842 or Trinity 2991

Personal Interest

BIRTHS
Martin. To Mr. and Mrs. George B. Martin, a daughter, Elizabeth Browning Martin. Born January 19, 1929.

ENGAGEMENTS
Hoyt-Stookey. Miss Helen Phelps Hoyt to Dr. Byron Stookey, son of Mrs. Lyman Polk Stookey.

MARRIAGES
Meversieck-Atkin. Miss Mary Catherine Meversieck, daughter of Mrs. Flora C. Meversieck, to Mr. Harold French Atkin.

REYNOLDS-FASSOTH. Miss Katherine Reynolds, daughter of Mr. and Mrs. Walter J. Reynolds, to Mr. Paul D. Fassoth of San Francisco, Calif.

Bryan-Ballingier. Mr. William Jennings Bryan, Jr., to Mrs. Ellen Bent Ballingier, daughter of Mr. and Mrs. Arthur S. Bent.

Johnson-Jamison. Mr. Frank Levin Johnson to Miss Frances Jamison, daughter of Mr. and Mrs. Arthur Chaucey Jamison.

McDonald-Merrill. Mr. John Miller McDonald, of Chicago, to Miss Florence Marion Merrill, daughter of Mr. and Mrs. Walter A. Merrill.

Reay-Rea. Mr. Dwight Hunter Reay to Miss Frances Rea, daughter of Mr. and Mrs. Alfred W. Rea.

Please send information of personal interest to the Club Survey Chairman, Mrs. William Dellamore, 310 South Kingsley Drive, Telephone Washington 5725.

Anloinelle Hagen

Correct Clothing for Gentlewomen

730 So Flower St
Telephone Va 8363

EXPRESSION—VOICE Quality—Control

Highest Testimonials—Special Terms to 25c!

Telephone for appointment Westmore 3654
JULIA M. POWELL

FOOTWEAR OF FASHION THAT MIRRORS THE MODE AT CANNES—THE RIVIERA AND HOLLYWOOD

The French Bootie
6916 HOLLYWOOD BLVD.
GRANITE 5203

Modern broadcasting and the Magnavox Dynamic Speaker have given new aesthetic values to radio entertainment. Capable artists know that nothing is lost when they are heard over a Magnavox. Music-critical listeners likewise appreciate the fidelity of Magnavox. Why not enjoy your radio to the fullest extent?

THE MAGNAVOX COMPANY

Oakland, California Chicago, Illinois

For Further Information Write
THE LEO J. MEYBERG CO.
1022 Wall Street
Phone WEstmore 9255 LOS ANGELES

For Advertising Space In
EBELL
Call TUCKER 4145

YOUR HEALTH

is made a living investment when supervised at

DR. MOORE'S HEALTH-RESTORIUM

Wilshire at Rampart
DU 2441

2 Phones W. Ashington 9875—8974

DILLIN DRUG COMPANY

Prompt Delivery Service
S. A. M. to 10 P. M.

691 SO. WESTERN AVENUE
Corner Sixth Street
LOS ANGELES

Solving the Moving Problem

really is quite easy. Simply phone the Hollywood Storage Co., Granite 1161. Trained, courteous men using modern equipment will call and make light of what otherwise might be a day of exasperation.

Service that is Superior

Hollywood Storage Co.
Conveniently Located
1025 N. HIGHLAND
GRANITE 1161

Largest West of New York—Oldest on the Coast

HUDGEN'S Permanent Wave Shop
EXCLUSIVE HAIR WAVING SPECIALISTS

Entire Front 4th Floor Brack Shops Seventh at Grand, Los Angeles
Mildred J. Caldwell Phone TUCKER 2863
In Charge

SELECTED SCHOOLS

LytellStudio of the Dance

"A Private School of Dancing"

Velma Lytell Selma Lytell

The Art of

Plastic, Interpretative, Classical, Tap and Ballroom Dancing

Taught at

546 So. New Hampshire Ave. WA 7546 OR 4321

MACURDA-DRISKO SCHOOLS

(Formerly Los Angeles Coaching School)

Private Junior College, Private High School, Coaching Classes, Tutoring, Small classes, individual attention. Scholarship is emphasized.

1609 WEST NINTH STREET

DUnkirk 1416

Girls Collegiate School

Established 1892
ACCREDITED COUNTRY DAY AND BOARDING SCHOOL
Glendora foothills nr. Los Angeles
SEVENTH GRADE TO COLLEGE
GRADUATE WORK TWO YEARS
Miss Parsons and Miss Dennen

Whitney 5852 Office DRevel 7900

Bertha Caroline Stockwell

Member of Ebell
Whistling Soloist and Instructor of Whistling Studio
233 So. Wilton Place Los Angeles

Department Notes
(Continued from Page Seven)

PUBLIC AFFAIRS:

The International Relations program scheduled for March 13th will have as speaker Mr. George Gleason, President of the Council on International Relations. The Council was recently organized under the direction of Dr. Rufus B. von KleinSmid. It is intimately related with the University of Southern California.

PSYCHOLOGY

Mr. O. B. Stude, a University of Strassburg student, will be remembered for his excellent presentation of "The Story of Psychology" at the opening meeting of the department.

Dr. Clifford S. Barrett is head of the Philosophy department of the University of California at Los Angeles. Dr.

Miss Fulmer's School
Member of Ebell
Children's Dept. — Kindergarten through Eighth Grade. Boarding and Day. Experienced teachers for all grades.
Automobile Service
KINDERGARTEN PRIMARY EDUCATION for Young Women.
College Entrance Requirements.
Telephone: DUnkirk 4974
627 S. St. Andrews Pl.

"For Sons of Discerning Parents"
BEVERLY SCHOOL FOR BOYS
for Boys from 10 to 18
Non-sectarian, Non-military, Day and Boarding. Scholarship and school sports equitably blended.
Annual Catalogue on request, 368 South Virgil Avenue, Los Angeles, California. Tel. DUnkirk 1468
"The School that Stresses Scholarship"

MACURDA-DRISKO SCHOOLS
(Formerly Los Angeles Coaching School)
Private Junior College, Private High School, Coaching Classes, Tutoring, Small classes, individual attention. Scholarship is emphasized.
1609 WEST NINTH STREET DUnkirk 1416

KENWOOD HALL
Boarding and Day School For Girls
All classes in the out-of-doors—Pupils received at any time throughout the year
Ruby Mildred King, Director
6367 Wilshire Boulevard, Opposite Carthay Center. OREGON 5303

Westlake School for Girls
Accredited College Preparation and Lower School. Courses in Music, Art, Home Economics, Swimming pool and all out-of-door sports.
HOLMBY COLLEGE
Leads to 3rd year in Universities. Fully accredited. Fredricka De Laguna and Jessica S. Vance, Directors, 744 North Faring Road.

Barrett is a Ph.D. of Princeton University.

Nature Lovers

(Continued from Page Five)
article in our January Bulletin under General Federation Notes about "Hogging the Scenery." It is in accord with this idea about the wild flowers and there is a chance for each one of us to do our bit in preserving the beauties of our glorious state.
Let each member of Ebell ask herself if she is like Arthur Guiterman's "Nature Lover."

For Advertising Space In
EBELL
Call TUCKER 4145

Heard About the Club

Voice over the telephone: "What is the meeting about? I don't want to come unless I know what is going to be doing."

"It's where ignorance is bliss that a little learning is a dangerous thing."

"A speech to be immortal does not need to be eternal."

"Come up to our house to-night." "Can't, I'm going to see Samson and Delilah." "Well, bring them along."

"Whenever a person comes to the conclusion that she is indispensable, then she isn't."

"Why do they keep the stubs to the luncheon tickets?"

"Have your afterthoughts first, and you'll miss a lot of trouble."

At the ticket window: "Take care of this glass of jelly for me till after the meeting."

"When we grow old gracefully, it takes a long time to do it."

Telephone call: "Can you tell me where the Beverly Bowling Alley is and what the phone number is?"

"The new Einstein theory is said to be something like love. No one else can possibly understand it."

"If you want all the ticket why don't you take it up at the door?"

"Will you please change this five dollar bill? I'd like it in nickels and dimes."

"The most effective co-educational institution is matrimony."

"Reserve a seat for every luncheon for me. I will pay for it only when I use it."

Please send contributions to this column to the editor, care of Ebell Club.

Windsor Square Theatre
for 3 days only, beginning
Thursday, February 28
Mr. Jason Robards
in
Frank Craven's
Unproportionally Funny
Comedy in Three Acts
"NEW BROOMS"
Matinee, Saturday, March 2
Evenings: 5:00 & 8:00
Matinee: 2:30 & 5:00
Box Office Phone OXleton 0505
for Reservations

Etiquette of Flag Prepared

Respect Old Glory!
Believing that the misuse of the Stars and Stripes is due to ignorance rather than a deliberate intention, the California Chapter of the Daughters of the American Revolution has prepared a "Flag Etiquette." These are the new rules which are to be recognized through the State in the matter of displaying the Flag:

The Flag should be raised at sunrise and lowered at sunset.

When the Flag is placed at half-staff it should be hoisted to top of staff first, then lowered to one breadth of the Flag. When lowered from half-staff it should be raised to top of staff first and then lowered. On Memorial Day the Flag should float at half-staff until noon and full-staff after noon.

The American Flag should always have the place of honor when carried with other flags in a parade; either precede or at the right. International usage forbids the display of the flag of one nation above that of any other. They should be flown from separate staffs on the same level.

When the Flag is used in connection with the unveiling of a statue or monument it should not be allowed to fall, but should be carried aloft to wave out, forming a distinctive feature during the rest of the ceremony. When the Flag is placed over a bier or casket the Union should be at the head.

When the Flag is worn as a badge it should be worn flat on the left breast.

When the Flag is used as a decoration it should, whenever possible, float from the staff. The Flag should never be festooned or draped, always hung flat. When the colors are required for decoration, red, white, and blue bunting should be used. When the Flag is hung against the side of a building or wall horizontally, the Union should be in the upper left-hand corner. When hung vertically the Union should be in upper right-hand corner. The Flag should never be hung wrong side out. When the Flag is hung as a banner across the street the Union should be to the north or east.

The American Flag should never be dipped in salute. It should never be allowed to touch the ground. It should never be displayed lower than a person sitting. It should never be worn as a whole or part of a costume. It should never be used to cover or decorate any kind of furniture or vehicle. The design of the Flag should not be used as decoration on napkins, handkerchiefs, sofa-pillows, cakes, candies, or ice cream.

Better American Speech Department

(Continued from Page Eight)
*The hour will soon be here. Oh, when will liberty
Once more be here? Seating yonder peak,
I saw an eagle wheeling near its brow,
O'er the abyss his broad expanded wings
Lay calm and motionless upon the air
As if he floated there without the aid
By the sole act of his unlorded will.
That buoyed him proudly up.*

*Instinctively I bent my bow; yet kept he rounding still
His airy circle, as in the delight
Measuring the ample range beneath
And round; absorbed, he heeded not
The death that threatened him.
I could not shoot.
'Twas Liberty. I turned my bow aside
And let him soar away.*
—JAMES SHERIDAN KNOWLES.

I. The reader must be acquainted with the historical background of the selection he is presenting. This includes:

- (a) A knowledge of the author and of his subject.
- (b) An appreciation of his style.
- (c) An accurate understanding of references to places, people, and events mentioned.

II. He must then become thoroughly familiar with the selection; he must live with the ideas and characters until they are his own.

III. Next he must read aloud, to test:

- (a) His voice quality and its range and radiation.
- (b) His enunciation; the mechanics of speech.
- (c) His ability to emphasize significant words by tone color, to bring out "points" by a careful analysis of lines and phrases.
- (d) His evaluation of unusual words and colloquialisms.

IV. Finally his bodily expression, including gesture and facial expression, must evolve as a complementary factor to the emotional stimulus of the selection.
(a) He must experiment to find the most characteristic gesture.
(b) He must limit himself to that which is natural and necessary.

When the study of "Tall Among the Mountains" was completed Mrs. Hunnewell discussed a short essay on "Voices" by Ella Wheeler Wilcox. This essay being difficult to find, we quote from it as follows:

VOICES

ELLA WHEELER WILCOX
Voices affect me like music; like perfumes; like scenes in nature.

I have heard the voice of a man or woman who was not visible; and all the atmosphere changes as if a sudden wind had risen; or as if an eclipse had taken place at noon-day; or as if a "light that never was on land or sea" had risen in the skies at night.


Once in the desert of the commonplace I heard a voice; and instantly I was enveloped in beauty. Statues gleamed from hidden niches; and fountains played; and there were culture and repose and charm all over the world.

Not all soft voices are pleasant; not all loud voices are unpleasant. It depends upon the Quality.

There is a woman who is crowned with youth and classic beauty. She is like a marble goddess to see; and oftentimes I have beheld her moving about exquisitely kept lavans, under the shadow of great trees.

She is a picture to please the eye; a picture—until she speaks. Always when her voice reaches my ears the same thing occurs. The beautiful lavans give place to ragged, unkempt farm-house yards, the great trees vanish, and I see only forlorn buildings, dilapidated stables, men in shirt sleeves and "suspenders," coming home tired with toil; women with calico aprons and prematurely faded faces, performing disagreeable duties. The utterly commonplace and unromantic side of life is expressed by the voice of this beautiful woman.

It is like a blow to my ear. Her own nature is devoid of romance; there is no sentiment in her soul. And so the voice tells the story of temperamental



*Dependability
Richness
Purity*

These are the outstanding features of Gold Seal products and Gold Seal Service.
Milk unsurpassed in quality, scientifically cared for to safeguard its purity—service that means satisfaction.

Prove the difference
Phone OXford 1011

SANITARY GOLD SEAL DAIRY
Hamel Road and Alden Drive

FINE GARMENT CLEANING
O. W. THOMAS COMPANY
DRY CLEANERS and DYERS
2207-9 Maple Ave. Plant and Office WEstmore 2059

THE ARCADY DINING ROOM
On Wilshire Boulevard at Rampart
EXCELLENT MEALS PERFECT SERVICE DELIGHTFUL MUSIC
Special Menus for Dinner or Luncheon Parties Telephone: Fitzroy 6161
Table d'Hote A la Carte at all Hours

The Club Calendar
(Continued from Page Eighteen)
Thursday, March 28
Spanish; Department Room; 9:00 A. M.
Friday, March 29
Practical Relief; Department Room; 9:00 A. M.
French; Solarium; 9:30 A. M.

Patronize your advertisers. Tell them why you are doing so. And thus help your magazine and your club.

low places. It could not be a voice of the depths.
I know a man whose voice will bring calm out of turmoil; peace out of discord; and rest out of weariness; men, women, children, animals, all feel the magnetism and charm of his modulated tones. Each sentence is a

(Continued on Page Twenty-four)

We Are Now Showing
Our
New Spring
Collection
of
Gowns, Wraps, Frocks,
Coats, Sports Apparel,
Millinery, and
Accessories.
Shayne's
Individual Apparel for Gentlewomen
6922-24 Hollywood Blvd.
Directly Opposite
Grauman's Chinese Theatre



FOXES

luxuriously soft—and as nearly perfect as Nature and COLBURNS can make them.

Special Summer Prices

Colburns
FURS EXCLUSIVELY
716-715 SOUTH FLOWER ST.

"When It's a Matter of Good Taste"
The Wilshire Caterers
ICE CREAM—CAKES—PASTRIES—ICES
692 S. Vermont WA 1204

Washington 9771 Flitzroy 0654
STERLING CLEANERS & DYERS
3908 W. 6th Street
LOS ANGELES, CALIF. We Own and Operate Our Own Plant.
R. W. THOMAS, Mgr.

HOLLYWOOD EMPLOYMENT AGENCY
OLympia 1987
High class domestic help
Laundresses and Cleaners
Wilshire, Hollywood and Beverly Hills Our Specialty
4366 Sunset Blvd. Established in Hollywood 1921

Patronized by
The Elite of Los Angeles
The French Modern HAND LAUNDRY
1217-1219
West Washington St.
Los Angeles
Telephone: WEstmore 9643

GREETING CARDS
Kodak Finishing Pictures
NOTAN ART SHOP
832 West 6th Street
LOS ANGELES, CALIF.
Telephone VAndike 8565

Colored Help? Yes!
Thorough, Pleasing, Courteous

DEPENDABLE
VAn. 5767
Mamie V. White, Employment

Better American Speech Department

(Continued from Page Twenty-three)
caress, however dignified the words may be.

There are voices which rouse you to action, which stir you with ambition; and there are others which fill you with despondency. There are voices which irritate you like the buzzing of an insect or the grating of a file; and voices which hiss like serpents and snap like turtles.

Sometimes from the rosebud mouth of youth proceeds the cracked voice of age; and from feminine lips the deep bass of masculine tones; but most dreadful of all is the thin, piping voice of femininity issuing from the bearded lips of men.

That which we are, and the result of that which we have been, can be changed and modified by the cultivation of the voice.

Were all the world to speak in a melodious and pleasing voice, many of the harsh disagreeable qualities in human nature would disappear.

What does your voice express? Listen and analyze it; and then ask your best friend, if you are brave enough to hear the answer.

Mrs. Hunnewell closed after reading several selections, among them the Twenty-third Psalm, exemplifying how much of spiritual value can be added to literature by observing the foregoing principles.

The Book Page

(Continued from Page Fifteen)
to one who is an authority on the subject matter he is criticizing. The reviewer is no more or less than a reporter and tells the story just as he finds it. It is always to be remembered that the reviewer's function is to make people want to read, and that thought must be ever uppermost when reviewing a book.

Don't you think me the informed young thing? I wish I had the space and time to tell you just half of the interesting and intriguing things that have developed and that I have learned in this charming group under Mrs. Valley's friendly supervision. I don't know how they happened to allow me to have this important position, but up to date I have apparently fooled them all, and I am grateful, for you know I have always said, I don't want my child to catch up with me too early.

I have given you nothing but "Book Chamber," however, next time I write, with this off my

(Continued from Page Eight)
tery, over-emphasis of technique, and decadence. Any one of a number of things may start a new cycle—a great catastrophe, a spiritual awakening, a new medium of expression, new living conditions, and so on. The complete cycle can be advantageously studied in the Japanese print, which was the outcome of the introduction from China of a new process, that of printing from the wood block. Often an artist will show the whole cycle in his work, though fortunately for art, many have maintained their highest level to the end. Surely this discrimination, which may be developed by travel, study, and experience, is worthy of our cultivation.

The past few years have seen many art fads rise and wane. It would have been a waste of time to have gotten very much excited about any of them, yet out of them all, something has crystallized, something is happening.

Next to keeping young by studying, the most important thing is to keep an open mind. Our city hall is an example of the new American architecture that is growing up about us, and we know that a new type of furniture always and inevitably follows a new type of architecture. In this era, which we are now entering, we will need all the discrimination that we can muster to enable us to help, not hinder.

In our libraries, we do not throw out our classics to make room for the latest sensation, but we select from the best of the modern books those which deserve a place among our old favorites. Holding fast to the good of the past and choosing the best of the present is a good program for art or literature or life.

Our newspapers and magazines are full of this discussion of modern art. One could quote indefinitely. The following, from the columns of the Art Digest, is a prophecy made by Mr. Bailey in a lecture before the Art Institute of Chicago. After citing the historic instances when invasions of Greece and Italy by barbarians had first destroyed art, then built up a finer art, he goes on to say, "Today we are witnessing another invasion of barbarians. It is the influx of so-called modernistic art. Its suggested purpose is to destroy everything that went before it, and to substitute its own conceptions. This is the wild blood of today. And as the cycle revolves, there will arise out of this clash of barbaric art and the older or more conservative forms, a greater and more vital art which will receive the acclaim of the world."

chest I shall be able to write you some news about the family. Do let me hear from you soon and let me know what you are doing in a literary way.

Affectionately,
ELEANORE.
Mrs. George Amon Meyer
Secretary, Book Chamber



WHEN YOUR FRIENDS FROM THE EAST VISIT LOS ANGELES

WHEN you show the wonders of Los Angeles and Southern California to your relatives and friends from the East, be sure to include in your itinerary a visit to Forest Lawn. ☞ This great Memorial Park is known throughout the world. Each year 500,000 go through its gates. Distinguished visitors from every land have paid glowing tribute to the vision that inspired Forest Lawn, and to the scale upon which that vision has been realized. ☞ At Forest Lawn you will see the famous *Little Church of the Flowers*, modeled from the quaint structure at Stoke Poges, England, tenderly associated with the Poet Gray's classic *Elegy*. ☞ The work of many of the greatest sculptors of all time is reproduced in Forest Lawn Memorial Park, including Michelangelo's heroic *Moses*, Thorvaldsen's smiling *Christus*, Professor Gazzeri's *Mystery of Life*, Canova's *Three Graces*, and numerous others. ☞ In the marvelous Mausoleum at Forest Lawn soon will be installed the actual-size reproduction in art glass of Leonardo da Vinci's immortal painting *The Last Supper*. Upon this stupendous project Italy's distinguished artist-sculptor, Rosa Caselli Moretti, has been at work for more than four years. ☞ A visit to Forest Lawn is a source of spiritual inspiration. No one can witness the progress of this notable institution without experiencing a renewal of faith in the immortality of the human soul.

A booklet "The Truth About Burial Customs and Costs" will be mailed FREE on request. A beautifully illustrated Art Book, "Chimes," fully descriptive of the statuary, etc., in Forest Lawn, may be obtained by sending 25 cents to partially cover printing cost.

FOREST LAWN MEMORIAL PARK

Glendale Blvd. and San Fernando Road, Glendale
CLOSE TO THE HEART OF LOS ANGELES

928 PLMP

FROM
EBELL

743 So. Lucerne
Los Angeles, Cal.
Return Postage
Guaranteed

4314 - 80
S. M. ...
Postage Due...
This mail is returned charged with
postage due according to Section
1101 P. L. & R. Sec. 1101 (1924)
L A U R A B I R O W N
5 0 L U C E R N E B L V D
S A N G E L E S C A L I F

Sec. 435 1/2, P. L. & R.
U. S. POSTAGE
PAID
Los Angeles, Calif.
Permit 1874

MADDUX AIR LINES

INCORPORATED

America's Greatest Airway System

DAILY SERVICE BETWEEN
LOS ANGELES AND:

Bakersfield	Long Beach	San Bernardino
Fresno	Santa Ana	Palm Springs
Oakland	San Diego	El Centro
San Francisco	Agua Caliente (Mexico)	Mexicali (Mexico)

Tijuana Race Special—Leave Los Angeles at noon daily—Return morning or afternoon. (Earlier planes also.)

The Orange Loop—Daily—All of Southern California in one glorious trip—from Los Angeles through Imperial Valley to border, west to Agua Caliente, up coast to Los Angeles—or reverse routing.

MADDUX AIR LINES, Inc.

636 S. Olive St.

WEStmore 4111



HENRY F. WITHEY

ARCHITECT

A. I. A.

405 So. Western Ave.

~ IDEAL ~ CERTIFIED DAIRY

MILK is the most important item in the list of foods you buy. You have every right to demand that it shall be safe, absolutely clean, fresh, and above all that it shall be palatable. You are familiar with the fact that your City Health Department maintains the strictest inspection and that it surrounds the production of milk with every safeguard.

In the production of Ideal Certified Milk we not only fulfil your requirements and those of the City Health Department but we adhere strictly to the rules and regulations of the Medical Milk Commission.

We produce milk that meets every requirement of the Medical Fraternity and the Mother who demands the very best in the food she gives to her child.

Ideal Certified milk has been declared to be the finest milk in America. It won this distinction in International contest in June, 1928.

For Service Call

Ideal Certified Dairy

Douglas 421

Glendale, Calif.