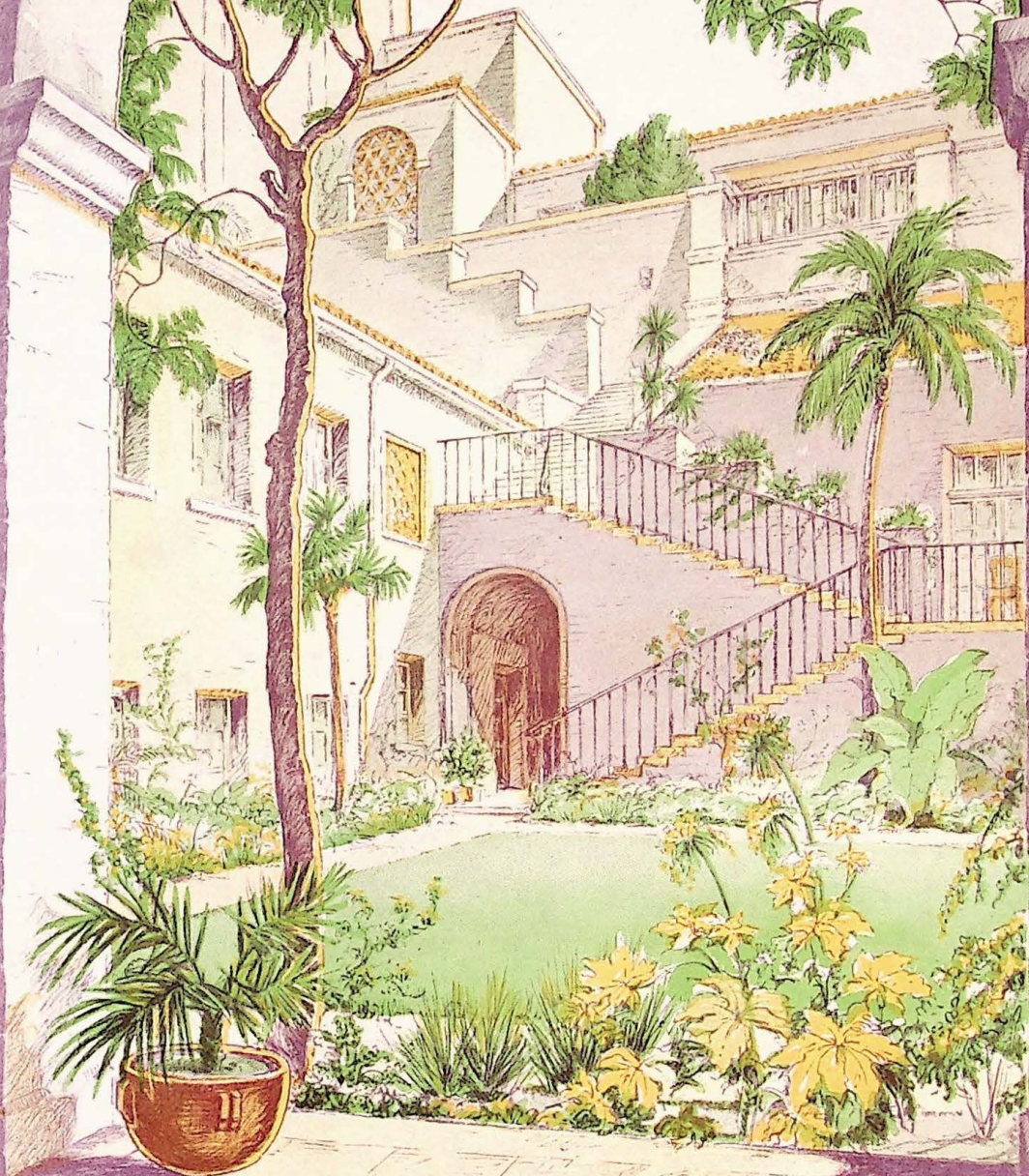


The
CEBOLA



of Los Angeles

Ophe Klinker

Vol. III. No. 7

APRIL

1930

PRICE 25c

Sanitas IS PREFERRED

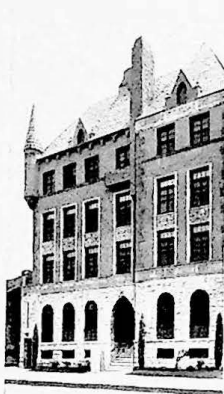
At Right, the palatial Beverly Hills home of Mr. F. E. Gloyd.



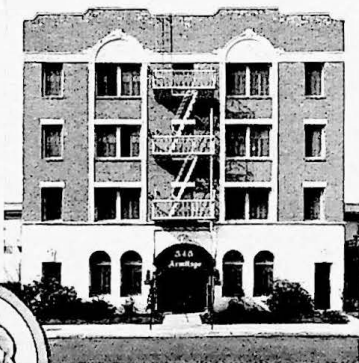
... before decorating learn about its beauty, durability, economy

THE marked preference shown for Sanitas, the modern wall covering, by those who build better class homes and apartments in Southern California, demonstrates conclusively the remarkable qualities of this unique fabric. ✧ There are Sanitas styles to meet every decorative requirement . . . modest homes or mansions, pretentious apartments, modern hotels and club houses are giving ample evidence of the beauty and durability of this versatile cloth wall covering. ✧ But a building doesn't necessarily have to be modern to use Sanitas to advantage. Many older homes, apartment houses and club buildings have had their interiors modernized with this practical, charming and economical product. Sanitas doesn't crack, peel or fade and is easily cleaned with a damp cloth.

Sanitas is *wall insurance* . . .
an investment rather
than an expense.



Above, the Groystone Apartments and below, two views of Armitage Apartments



WITHOUT obligation to you, we will gladly show you the new Sanitas Sample Book, containing 150 styles and numerous decorative suggestions in full color. Call and see this sample book before decorating. Or, phone TRinity 5425 and we will send the book for your inspection.



Downey & Gotwals

SANITAS DISTRIBUTORS

Headquarters for Fine Wall Papers

821 South Flower Street, Los Angeles

Look for this trademark on the back of the goods





MRS. CHARLES S. CRAIL *Editor and Manager*
 EVELYN BENOIST *Advertising Manager*

The magazine is published by the EBELL OF LOS ANGELES, with editorial offices at the club house, 743 South Lucerne. ORegon 4104. The advertising and printing offices are at the WETZEL PUBLISHING CO., INC., 336 South Broadway. Phone VAndike 7736.

The Life of a Club

THE FUTURE and value of women's clubs has been discussed during the past year in books, newspapers and magazines. Some writers have predicted the fall of women's clubs, others have said they are approaching the zenith of their strength and usefulness.

Women's clubs, as men's, are made of all varieties and kinds. The modus operandi depends, largely, upon the object of existence.

Our Ebell of Los Angeles was organized as an educational, philanthropic and cultural club. With these objectives, there are certain fields of activity which are prohibited to us, such as enterprises for pecuniary profit, politics, and sectionalism or sectarianism.

Our club building was constructed, primarily, for the use of club members and we are looking forward to the time when it will not be necessary to take a large part of the income of the club to make payments of principal and interest on its cost. In the meantime the value of our property is increasing rapidly. For the next few years a most important part of the club's activities and welfare will be concerned with its financial affairs.

Ebell has never failed to take her stand on great questions of vital interest to the people whether local or national when such questions were within the sphere of her activities. The club membership is practically unanimous upon any moral issue or subject of great civic welfare.

So these subjects do not endanger the life of our club. But there is one essential without which no club can continue to prosper and that is the interest and devotion of its members.

It is a well known fact that the workers in any organization are the ones most interested and the ones most zealous for the organization's welfare. The ideal club is one in which every member has a definite work and is happy in her work. With a club of three thousand members it is, perhaps, impossible to find the exact work which is congenial for each member; but, no doubt, there could be many more active members than there are at present and the club's aim is to have every member a willing worker. With a happy, interested and devoted membership the welfare of a club is secure.

—THE EDITOR.

Our Special Number

THE MAY number of Ebell Magazine will be issued as a special number. It will be called the Souvenir Number and will be dedicated to our Charter members. For our cover we shall use the picture of the Portals as these doors were the gift of those devoted patriarchs.

In addition to carrying the regular club program and the various activities the Souvenir Number will be historical. We hope to have a picture of each president and a short résumé of the work accomplished during her administration.

Contents of this Issue

EBELL PATIO	Cover
EDITOR'S PAGE	1
MRS. ALBERT H. PURDUE	Frontispiece
PRESIDENT'S PAGE	3
PROGRAM	4
NIGHTS IN THE SAHARA—MRS. BYRON THORPE CARR.....	5
THE CORRESPONDING SECRETARY— MRS. ALBERT H. PURDUE.....	6
COSTUMES	6
WHAT IS IMPORTANT—MRS. W. FELIX RAMSEY.....	7
DEPARTMENTS	8
DEPARTMENT NOTES	8
CLUB NOTES	9
SPANISH LUNCHEON	10
PROGRAM QUESTIONNAIRE	10
PROGRAM NOTES	11
GENERAL FEDERATION NEWS	11
EBELL'S POETRY PAGE	12
SALON OF ART	13
MURAL PAINTING—JULIAN E. GARNSEY	13
EBELL JUNIORS	14
SOCIAL WELFARE ACTIVITIES	15
BOOK PAGE	16
THE TWO SEAS—P. A. BEHANNESY	17
SCHOLARSHIPS	20
LIBRARY	21
CLUB CALENDAR	23
PERSONAL INTEREST	23
APPLICATIONS FOR MEMBERSHIP	24

There will be special articles both by members who have been active in club affairs in former years and by members who at the present time are carrying on the club work.

The regular departments of the magazine will be given extra space and each will have something special to present. The magazine will be larger than the ordinary issue. An additional number of copies will be printed and available.

We hope to make this special number something of which every Ebell member will be proud and which she will want to place among her keepsakes.

—THE EDITOR.

What Is Your Favorite Program?

OUR CLUB has been built around the Monday programs. It is very important that these programs shall be the best obtainable within the limits of our budget. It is equally important that they bring benefit and pleasure to the members of the club. The advantages of club life are desirable and profitable only when the members are receiving such programs of entertainment and information.

Each of us has an idea as to what should be on our programs. Many of us have ideas which are similar. While many are willing to accept another person's judgment, most of us would like to express an opinion in the matter and to declare our preferences for programs which appeal to us.

In order that each club member may have the opportunity to so express herself a questionnaire has been prepared by the program chairman, Mrs. Edgar S. Stanley, and appears in this issue of the magazine.

Each member is requested to register her choice of programs through the questions and send them to Mrs. Stanley.

In this way the program chairman will be informed as to just what the club members like and the selections for next year's programs may be made accordingly.

—THE EDITOR.



MRS. ALBERT H. PURDUE
Corresponding Secretary

Published monthly by the Ebells of Los Angeles

EBELL

Vol. III

APRIL, 1930

No. 7

President's Page

MARCH THIRD has come and gone and again Ebells women have shown their loyalty by their staunch support of their Board of Directors.

It is always a difficult piece of work to so explain the needs of a club that the membership at large can be led to see its own responsibility as regards the finances. It means something in overhead to move from a clubhouse of fifteen rooms and a small auditorium to a palatial place of seventy-five rooms and a fully equipped theater. It is the same as moving from a bungalow into a palace. Increased demands. Increased expenditures.

Our contractors and other business men advised us before we came into the new building that an increase in dues was the only answer.

However by careful management, by means of an influx of new members, and by means of a sum refunded from the building fund, we have been able to carry on successfully during these three years of occupancy. The depressed state of the real estate market, the peculiar situation in the theatrical world (few or no road shows), and reduced rentals of every kind—all combine to show us that we are running precariously near the edge of things.

Our club is too valuable to us, it means too much in our lives, for us to shirk the responsibility when the situation is brought to us as participating members. Accordingly after four weeks of discussion and explanation of our affairs, the amendment providing for an increase in dues of ten dollars a year was carried by an overwhelming affirmative vote of nine-tenths of those present and voting.

Even this increase does not make the income from dues equal to the aggregate of budget items. Neither does it make the dues in Ebells equal to that of the larger Eastern clubs. The Chicago Woman's club, the Cincinnati Woman's club and a number of others pay much higher dues. However with a probable sale of our Figueroa property for a reasonable sum within the next few years, the mortgage can be reduced, the interest lessened, and the

conduct of the club's business will become easier.

I wish again to emphasize the fact that the present Administration will not profit by this increase. It is simply a helpful gesture for the next Administration.

May I take this opportunity to thank those women who sent such fine, encouraging letters to me and all the women who worked so valiantly in the educational campaign during this trying time—the Past Officers' Round Table and many others. Also may I again commend that overwhelming majority of the members at large on their understanding and on their loyalty.

And now the first of April is approaching and the question of the annual election is confronting us.

It behooves us to weigh well the qualifications of the candidates offered for the several vacancies—their fitness to meet the requirements of those positions. We should remember that we—the club members—have the power to choose the candidates since we use the petition system and not a nominating committee. Let us see to it that they are not chosen for friendship's sake but because they are the best qualified women available.

And when the question of the candidates has been settled and the names posted, let us make the contest a friendly one. Let us adopt for our slogan—

Every thing good I can say of my candidate; nothing derogatory of her opponent.

—MRS. A. BENNETT COOKE.

The EBELL of LOS ANGELES

4400 WILSHIRE BLVD.
OREGON 4104

OFFICERS

Mrs. A. Bennett Cooke,	<i>President</i>
Mrs. Charles S. Crail,	<i>First Vice-President</i>
Mrs. Edgar S. Stanley,	<i>Second Vice-President</i>
Mrs. Frank H. Stanbery,	<i>Third Vice-President</i>
Mrs. Edward E. Sherrard,	<i>Fourth Vice-President</i>
Mrs. Jess E. Wilson,	<i>Recording Secretary</i>
Mrs. Albert H. Purdue,	<i>Corresponding Secretary</i>
Mrs. Patrick Campbell,	<i>Treasurer</i>
Mrs. J. Elbert Harshman,	<i>General Curator</i>
Mrs. William R. Wherry,	<i>Chairman Ebells Rest Cottage Association</i>
Mrs. Samuel Cary Dunlap,	<i>Chairman of Scholarships</i>

DIRECTORS

Mrs. A. Bennett Cooke	<i>Chairman, Board of Directors</i>
Mrs. Charles D. Burt	<i>Chairman of Library</i>
Mrs. Charles Egleston Cray	<i>Chairman of Social Welfare</i>
Mrs. Julian Ellsworth Garnsey	<i>Auditor</i>
Miss Frederica de Laguna	<i>Resolutions and General Federation Secretary</i>
Mrs. William Read	<i>Chairman of Public Relations</i>
Mrs. James Andrew Rogers	<i>Chairman of Rentals</i>

PRESIDENT'S DAY

Art patrons and members of Ebells remember that the first Wednesday in every month is President's Day and following the luncheon there will be a Gallery Talk, by some prominent speaker, on the paintings exhibited. The Salon is open to visitors other than Ebells members on that afternoon; admission cards may be had from Miss Emily Orr, Arcady Apartment Hotel, Wilshire Boulevard. Self-addressed stamped envelopes should accompany requests, or Miss Orr will hold your friends' cards at the Wilshire door on the said Wednesdays from two to four o'clock.



PROGRAM

April

At Two o'Clock

MRS. EDGAR S. STANLEY, *Program Chairman*
WHITNEY 6633

Monday, April Seventh

Lecture: Philosophy and Common Sense
Dr. Edmund H. Hollands

Monday, April Fourteenth

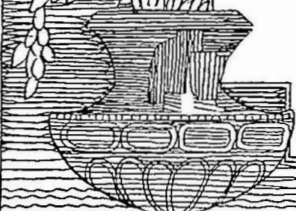
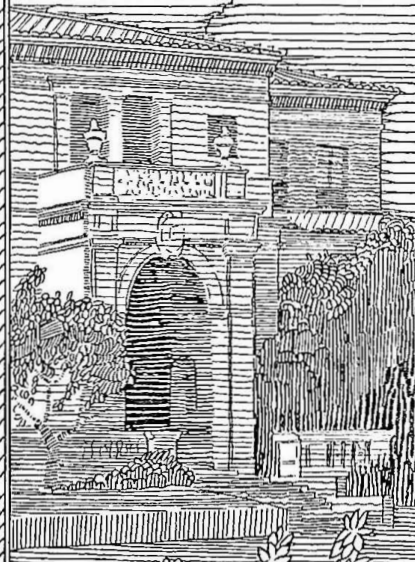
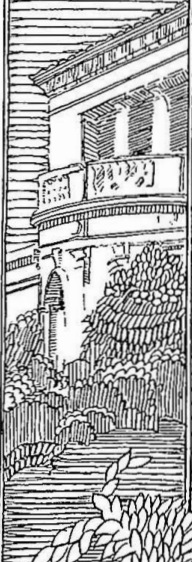
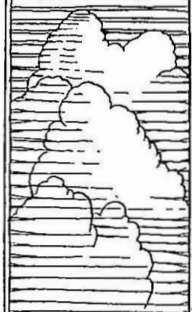
Illustrated Lecture: The Art and Architecture
of India
Miss Helena Whitford

Monday, April Twenty-first

Musicale: Donald Thayer, baritone

Monday, April Twenty-eighth

Three-Act Comedy: The Enchanted April,
by Kane Campbell
Drama Workshop of Ebell



RAE.CHE



BENEFIT HOSTESSES

Sitting, left to right—Mrs. R. C. Chaffin, Mrs. Ella E. Duncan.
Standing, left to right—Mrs. John H. Walker, Mrs. Kenneth P. Baber, Mrs. William Dellamore, Mrs. William H. Daum.

Nights in the Sahara

MRS. BYRON THORPE CARR

NORTH AFRICA, sunlit, exotic, oriental, land of the flaming torch and burning brazier.

Long had I desired to visit this far away region, and my first glimpse of Algiers seemed to me a reproduction of an Arabian Night city. Terrace upon terrace of gleaming white houses, rising from the water's edge, surmounted by a lovely background of dark green wooded slopes.

The old kasbah is the most fascinating portion to visit.

I shall transport you immediately to that remarkable battle-mented city Constantine, a city of surprising interest in a most remarkable location. It was built during the reign of Julius Cæsar, and owing to its almost impregnable position, besieged eighty times before it was finally conquered and destroyed and rebuilt in the year 311 A. D. by the great Emperor Constantine and named in honor of himself—Coita—being the Roman for Constantine.

'Twas here at the charming hostelry La Cirta we engaged the services of the famous official guide, one Saadi ben Ahmed, who has been engaged in conducting hundreds of renowned authors, artists and people of note to the vast Sahara.

As he strolled into the lobby, he was a striking figure, his handsome Arab costume completed by the most gorgeous blue broadcloth burnous I have ever seen—more anon of this lovely garment.

Having arranged an itinerary which included many unique features, visits to out of the way spots, we were keen to set out for Biskra, where he kept his paraphernalia and camels, and which is the starting point for the desert trip.

En route we spent one night at El Kantara, the gateway.

Saadi had planned a surprise in honor of my daughter's sixteenth birthday. When we arose and looked out from our balcony we beheld two Arab steeds. Mounting them in high glee we rode forth, and as we passed through this magnificent portal, El Kantara, we saw a marvellous thing—the first oasis of the desert, 90,000 palm trees in one group.

A broad flowing river meandered through this beautiful Palmeric which we forded several times.

Here we found the primitive Arab—such poverty, the red, white and black villages were a revelation.

As we neared Batia, the scene became more and more desolate at this point. We motored out some twenty miles. Ah! such a waste, no sign of life, not a leaf or twig of green far as the eye could reach. Sand! Sand! Sand!

All suddenly the beautiful ruin of that ancient Roman city, Tingad, burst into view.

Nestled at the foot of the Atlas Mountains lies this disintegrated rootless city, more marvellous than Pompeii. Founded by that glorious Emperor Trajan in the year 100 A. D. and today, conceded to be one of the greatest archaeological finds of the century.

One walks through the streets, the shops, the huge Forum, magnificent Amphitheatre, the contour of the latter intact. One sees the royal boxes, the huge stage enclosures for the wild beasts, even the ruts in the stone streets caused by the chariots are plainly visible.

There is a beautiful font, the lining being of exquisite mosaic, the coloring perfect.

Hundreds of columns, black, white, pink marble, elegant carved capitals, and most beautiful of all, the great triumphal Arch of Trajan, the carvings and symbols easily decipherable.

One could spend days here; a splendid museum houses many treasures. In the days of Roman occupation these people enjoyed a vast trade, lived and thrived until they were overcome by the Vandals. A succession of earthquakes completed the ruin and the combined action of wind and sand finally obliterated all trace of the once splendid city.

Late at night we reached Biskra. Now indeed we were in the heart of the desert, now we sensed the witchery of the Orient, it is the garden of oblivion.

A long spur of rosecolored mountains stretch way to the south and the far desert beyond seems mysteriously dim and blue like a remote sea.

Our first night wild strains of weird music and the thud of the tom-tom assailed our ears as we walked up the dim narrow streets with Saadi, white robed figures weaving in and out.

We first witnessed the dreadful performances of the dancing dervish, quite remarkable as he is in an hypnotic state and feels no pain but when he passed a white hot knife up and down his arm and the odor of burning flesh filled my nostrils and he sank panting at my feet I begged to move on.

The great attraction is the dancing of Ouled Nails. They were far prettier than the women of Algiers. Night after night the Arabs sit motionless, gazing upon this curious dance, a dance of much sensuality and suggestion.

Morning and our caravan awaiting us.

Six camels laden to the guards, six camel drivers, a trig little gray mule for Saadi and he in the most charming brown desert costume.

I had informed him that it would be utterly impossible for me to ride a camel without a burnous. When after some difficulty I found myself seated in the saddle, he slipped up behind me and dropped over my head that gorgeous pale blue burnous. Never have I worn such a luxurious garment for in spite of golden sunshine and blue skies a keen cold wind blows over the great Garden of Allah—the Sahara.

Behold us, on our way, I leading the caravan, on a huge cream colored beast with long silky hair, a beauty as camels go, who gargled and snarled and expostulated from morning till night.

Later I found he was only indulging in muttering "sweet nothings" for the benefit of his little brown lady companions.

So we padded on out over the ancient caravan trail where so many thousands of camels and humans have pursued their way.

At noon we dismounted, rested and partook of a delicious luncheon. I neglected to say that a charming young New York woman joined us so we were three lone women, with seven Arabs to guide us.

About four-thirty we suddenly rounded a huge dune and beheld our gay little camp of bright striped tents. It is really

(Continued on Page Ten)

The Corresponding Secretary

MRS. ALBERT H. PURDUE

WHILE most of the work of the Corresponding Secretary is done quietly at her desk, her outlook is not limited to the four walls of her library. Her letters are sent to "the seats of the mighty" and to the homes of the lowly; they may travel only a few blocks or they may encircle half the globe; they may be answers to communications written in French, German or Spanish; they may be in reply to messages expressed in perfect English or to requests made with a halting pen. In order that her letters may be effectively written, she must have both imagination and understanding; she must try to put herself in the place of the person to whom she is writing and to say the things that are in keeping with the purpose of the letter and the mood of the recipient.

When some matter of business has been thoughtfully considered by the Executive Committee, often there follow the words, "The corresponding secretary will please write a letter." While it is important that all officers be alert during business meetings, it is necessary that the corresponding secretary be also letter minded, in order that she may know just what is essential and what would be superfluous in her communications. Thus the busiest part of the week comes just after board meetings, for business letters especially must receive prompt attention.

The desk of the corresponding secretary is never clear for more than half a day. The telephone rings and the Chairman of Club Survey or a member of her committee reports that there is joy in some Ebell family and perhaps that sorrow has entered the home of another. These calls are likely to come during the first half of the week, for much of the information that enables the Executive Committee to keep in touch with the members is gleaned during the social hour every Monday afternoon. Once again the request is made of each member that, when any item of personal interest comes to her knowledge, she shall pass it on to this group of splendid workers.

Two or three times a year written invitations are sent out for special meetings. Often there is the opportunity to write a letter thanking a member or a friend for some gift that has been made to Ebell. The spirit of appreciation that prompts the giving is indicated by a paragraph quoted from a letter written by the husband of one who had been a dearly beloved member of the club: "To my wife, Ebell was a live force. She always brought home to me the great thoughts of the eminent men and women who have appeared before your club and the many fine things said and done by your officers and by your members. They were to her a great inspiration and joy, a constant awakening."

When the accumulation of letters becomes unusually great, the corresponding secretary puts herself upon a stint. She decides that a certain number, come what may, must be written every day, and she holds herself to it. Fortunately, this never seems really a burden. Instead, it brings the joy and the satisfaction of something accomplished. Ebell responsibilities have a way of "getting" the worker. A member's love for the club is such that she will do whatsoever is necessary to put things over. Added pleasure is derived from having suitable materials with which to work,—printed stationery for business letters, beautifully engraved cards for social correspondence, smaller ones for invitations, and letter paper for longer communications.

Ebell may be compared to a vast mechanism with many parts



MRS. EDWIN E. EMBURY

Costumes

Costumes to a play are like color to a picture. Pictures speak the universal language. Without the proper atmosphere the beauty and prestige of a play would be lost. It fails to charm the eye and hold the attention of an audience.

Ebell now has its own wardrobe and is compelled to rent very few costumes such as those used in elaborate pageants and dramatic production. By having a club costumer we are saving many dollars. No matter how small or how large the program may be, every time a play is produced we are always glad to see that it is properly costumed.

Many times I have been asked, where do we obtain these gowns, hats, wraps, head-pieces, etc. which are used. We have purchased a few but most of them have been made in the department. A great many members have been so kind as to send in things which were no longer of use to them, old-fashioned dresses, hats, flowers, bits of lace, gold braids, etc., and we have found use for every article.

At the beginning of the year we asked the Board if we might purchase a number of strong boxes. Permission was given us to rent out our costumes at a nominal rental. In this way we are acquiring the needed sum and will soon have the boxes on our shelves.

Members taking part in plays should let us look after their costumes as soon as they have been assigned their parts. If this is done they will be better pleased and it will make the work easier for your chairman and her assistants.

that are closely related. Who is there that does not like to see the wheels go 'round? The Corresponding Secretary is glad to contribute a chapter to what is being written about the work of the various officers and departments of the club.



CREDENTIALS COMMITTEE FOR APRIL.

Left to right—Mrs. Newton A. Carmean, Mrs. Chas. Salisbury,
Mrs. Forest E. Lewis, Mrs. L. Cleveland.
Seated—Mrs. Roy Porter, Mrs. Chas. Garstang,
Mrs. F. B. Belcher, Mrs. John Buchanan.

What Is Important?

MRS. W. FELIX RAMSEY

MR. JAMES FERGUSON of Pasadena, California, won one of the *Forum's* prizes for this definition of "What is Important?" "All accomplished work of beauty, durability, and merit is preceded by careful, correct thinking. In the degree that the thinking is exact, blunders are avoided, time is saved and harmonious completion finally attained. Correct thinking, is, therefore the most important thing in the world."

Thought cannot be considered, however, apart from its instrument, language, for the reason that we must have adequate words for holding our thoughts in our own minds, and we must agree on certain conventions that will guarantee to us that we can say to others the thing that we intend to say.

When I agreed to lead the language drill in the Better American Speech Department, it had been such a long time since I had given any serious thought to the technical part of the study of language, I felt a little like *The Bear of Very Little Brain*:

"Now is it true or is it not
That what is which and which is what?"

Then I remembered a bit of advice I had heard my father-in-law give his young son at the time he was beginning the practice of law. "Young man, you can't know all of the law, but you ought to know where to find all of the law." An idea! At least, I could look about to see what modern writers and modern teachers are saying about language.

They seem to agree that language, as we have it, is the result of a continual contest between the school teachers and "the masses." Both are good for us. The school teachers keep us conventional enough that the man in Maine can understand the man in Oregon. They keep the language formal enough that we may hand it down, intact, to our children's children. "The masses" make us discard some of our unnecessary forms and worn-out words; they give vigor and expression to our vocabulary.

"People must meet and it is a matter of common courtesy to say something even when there is scarcely anything to say. There is an art in saying something when there is nothing to say, but there is an art not less important of saying clearly what one

wishes to say when there is an abundance of material. Language is not all of speech; it is the social part of the faculty of speech and a collection of conventions written or unwritten adopted by the social body" (*The Meaning of Meaning*—C. K. Ogden and I. Richards).

Until recently many people have thought that the laws of language, like the laws of the Medes and the Persians, could not be altered. Our writers, many of whom seemed more concerned with what not to say than with what to say, wrote highfaluting phrases for the critical few, because only the critical few could read; but today the masses of the American people read and those who would be helpful must temper their words to the hungry lambs.

Our language has grown so rapidly that it takes a deal of curiosity, interest, and research to keep up even with the new words which inventions and world contacts have given it. Dr. Terman of Stanford University tells us, "The best single test of any person's intelligence that we have so far devised is the number of words of his mother tongue he can clearly define."

The language has grown, but the day has not added a minute to its fourteen hundred forty minutes, therefore, many writers have said, "We haven't time for grammar. Let's do away with rules. We have something to say; let's say it in our own way. Let's be expressive and original."

Contradictory as it may seem one must know how to be original. Dr. Thorndike says, "Necessity is not the mother of inventions, but the knowledge of other inventions is the mother and original ability is the father." This is as true in speech and in literature as it is in science and in mechanics. Mr. Brander Matthews has told the story that on one occasion he was talking to Mr. Rudyard Kipling about the principles of literary art and chanced to tell him that he had pointed out to his class of students at Columbia University the several masters of storytelling by whose example he had obviously profited. Mr. Kipling smiled pleasantly and then slyly drawled out, "Why give it away? Why not let them think it was just genius?"

Mr. Albert Edward Wiggam, in his book *Exploring Your Mind* tells us—quoting a friend—"If you want to be wise read text books, for school text books, from Solomon's Proverbs down, have sought to preserve the most advanced knowledge of the age."

There was a time, when one went to a feast, one conformed to a specific style of dress, and one leisurely and carefully cut one's salad with a fork; but times have changed and lettuce heads have grown larger and harder. Today one may clothe one's self in any reputable dress; one may cut one's salad with a knife or with a fork, but let one come to the feast with clean hands and with some semblance of order in one's clothing or one may not be invited again.

The pendulum was due to swing away from many of our improperly founded rules of expression; also from some rules which, though well founded in the beginning, have had their day. As examples, note: A careful writer today does not hesitate to end a sentence on a preposition; there is an apparent dying out of the niceties of the Subjunctive Mood. There is still need for many reforms. The text books are wise that are beginning to have their laws conform to the growth of the language and to the time element of the age.

Careful observers say that about five per cent of the people can get the feel of a sentence without studying grammar, but the other ninety-five per cent must advance by the grammar route. A rule of grammar, however, is only a social convention which makes it easier for me to say to you what I intend to say, and also makes it easier for you to understand what I intend you to understand. Some of us may feel like the *Cheerful Cherub*:

"Conventions creep my sweeping style;
Why should I be ruled by custom?
Rules were only made, I think,
For those too weak to bust 'em."

Though there are times to break rules, it requires more skill to break an accepted rule effectually than it does to keep to the required form.

(Continued on Page Twenty-two)

D E P A R T M E N T S

MRS. J. ELBERT HARSHMAN, General Curator
OLympia 5231

MRS. WILLIAM MILTON KINNEY, Assistant General Curators
GRanite 7931

MRS. CHARLES E. STANTON
ROchester 4120

APPLIED DESIGN

FIRST AND THIRD MONDAYS, 10:30 a.m.—Department Room

MRS. W. L. WILLIAMS, Curator—WYoming 4437
MRS. LURAH C. DAVIS, Instructor

APRIL 7TH—Design for embroidery in a space approximately eight inches square, in black and white. Submit two or more.

LUNCHEON

APRIL 21ST—Continue previous lesson in embroidery design by using sequences of color with accent of complementary colors.

LUNCHEON

ART AND TRAVEL

THIRD WEDNESDAY, 10:30 a.m.—Fine Arts Room

MRS. HARRY LEIGH BENTLEY, Curator—OREgon 7158

APRIL 16TH—*Around the Bay of Naples*, Illustrated, Mrs. Mary Mendenhall Perkins.

LUNCHEON

BETTER AMERICAN SPEECH

FIRST TUESDAY, 10:30 a.m.—Fine Arts Room.

MRS. H. KENYON BURCH, Curator—FITzroy 0355

APRIL 1ST—*Language Discussion*, Mrs. W. F. Ramsey; *Speech Presentation*, Mrs. Charles W. Roadman; *Speech Training As Personality Adjustment*, Professor Charles Frederick Lindsley.

BIBLE LITERATURE

THIRD TUESDAY, 10:30 a.m.—Fine Arts Room

MRS. SAMUEL H. FRENCH, Curator—ALhambra 6879

APRIL 15TH—*Literary Aspects of the Bible*, Dr. Bruce Baxter.

BOOK CHAMBER

SECOND FRIDAY, 10:30 a.m.—Fine Arts Room

MRS. JACK VALLELY, Director—WHitney 2135

APRIL 11TH—Book reviews and class discussion.

APRIL 18TH—LUNCHEON

BROWNING

FIRST AND THIRD MONDAY, 10:30 a.m.—Fine Arts Room

MRS. FRANCIS D. BLAKESLEE, Curator—DRexel 2121

APRIL 7TH—*Stereopticon Lecture: Browning's Italy*, Mrs. Mary Mendenhall Perkins.

LUNCHEON

APRIL 21ST—*Caliban*, Miss Frederica de Laguna; *The Flower's Name*, Mrs. S. W. Jewett; *Muleykeh*, Mrs. Chas. S. Gibson; *Home Thoughts from Aboard*, Mrs. William Reeve.

LUNCHEON

DRAMA

FIRST WEDNESDAY, 10:30 a.m.—Auditorium

MRS. WALTER JOHNSON VEALE, Curator—WHitney 9958

APRIL 2ND—*Sakuntala*, a pastoral drama of the sixth century by Kalidasa, adapted from two translations, arranged in five scenes, directed by Margaret Barbrick Purcell. Cast: A Charioteer, Mrs. George W. McDill; Dushyanta, The King, Mrs. Willodeane West Wright; Sakuntala, daughter of a king and a heavenly nymph, Mrs. Raymond Tremaine; Anusuya, Mrs. J. H. Woods; Priyamvada, Mrs. Ruth S. Roman; A Lord Chamberlain, Mrs. T. P. Thompson; Gautami, matron to Sakuntala, Mrs. C. S. Gibson; The Domestic Priest, Mrs. J. W. A. Off; Woman attendant to the child, Mrs. Gertrude Baty; The Story Teller, Margaret Barbrick Purcell; Atmosphere and noises, Mrs. Vincent Kerans.

Part II. A Harem Scene in Modern India in which we see the women of India entertaining each other with music, song, and dance. Miss Virginia Woods will sing oriental selections. Farah Anguize Khanum (Mrs. Sidney Sprague) and Mr. Sidney Sprague will play Hindu, Arabic, and Persian themes. Farah Anguize Khanum will play the oriental drums.

Members of Ebell will be ladies of the harem.

PRESIDENT'S LUNCHEON

DRAMA WORKSHOP

THIRD THURSDAY, 2:00 p.m.—Fine Arts Room

MRS. TOM P. ROBERTSON, Director—REpublic 8421

APRIL 17TH—*Drama Along the Street*, Mr. Robert W. Major. A one-act play, *The Set of Turquoise*, by Thomas Bailey Aldrich, members of the Drama Workshop.

FRENCH

FRIDAYS—Solarium.

MRS. WARREN T. SMITH, Curator—WHitney 8176

Mlle. MADELINE LETESSIER, Instructor

9:30 A. M.: Cours Elémentaire; 10:30 A. M.: Cours Intermédiaire; 11:30 A. M.: Cours Avancé.

LAW

FOURTH TUESDAY, 10:30 a.m.—Fine Arts Room

MRS. JOHN B. T. CAMPBELL, Curator—DUNKirk 3057

MISS FLORENCE BISCHOFF, Instructor

APRIL 22ND—*Domestic Relations*, Miss Florence Bischoff; *Eugenie Marriages*, Judge Walter Guerin.

LIVES AND TIMES

FOURTH TUESDAY, 2:00 p.m.—Solarium

MRS. RAYMOND TREMAINE, Curator—WYoming 4423

APRIL 22ND—*Review of a recent book*, Miss Marguerite Strangman. *Costume Recital*, French Songs in the Manner of Yvette Gilbert, Mrs. Joseph D. Taylor, Soloist, Miss Aurora Berg, Pianist.

MUSIC

FOURTH WEDNESDAY, 10:00 a.m.—Fine Arts Room

MRS. ROY CHARLES ARNOLD, Curator—ATlantic 6948

APRIL 23RD—*Current Events in Music*, Mrs. Ernest James Dill. Lecture: *Spanish Rhythms and Melodies*, Mrs. Gertrude Ross, Composer-Pianist. *Music of Spain*: Edward Clarke, Baritone; Rachel Steinman Clarke, Violinist. Laura May Poler, accompanist.

LUNCHEON

PARLIAMENTARY LAW

SECOND AND FOURTH MONDAYS, 10:30 a.m.—Department Room

MRS. WILLIAM P. TRAYNOR, Curator—WHitney 8572

MRS. CHARLES S. MCKELVEY, Instructor

APRIL 14TH—10:30 A. M. Lesson Topic: Suspension of the Rules. Object to the Consideration of the Question. Lessons XVIII, XIX.

LUNCHEON

APRIL 28TH—10:30 A. M. Lesson Topic: Complete Incidental Motions. Lessons XX to XXIII. 11:15 A. M. Smalltown Club.

LUNCHEON

POETRY

FIRST TUESDAY, 12:00 noon LUNCHEON—Poet's Corner

MRS. THORWALD PROBST, Curator—OLympia 7871

APRIL 1ST—*Robinson Jeffer's Poetic Message*, Mrs. Hester Alverston Moffett. Edwin Arlington Robinson, Poet, Miss Frederica de Laguna.

Honor Guests, Mr. and Mrs. Colin Palmerston, Miss Dorothy Handox, Miss Mary Murphy.

PSYCHOLOGY

SECOND AND FOURTH MONDAYS, 10:30 a.m.—Fine Arts Room

MRS. HENRY T. WRIGHT, Curator—CRestview 7427

APRIL 14TH—*Conscience*, Mrs. William Read.

LUNCHEON

APRIL 28TH—*The Philosophy of Psychology*, Dr. Ernest A. Holmes.

LUNCHEON

PUBLIC AFFAIRS

SECOND WEDNESDAY, 10:30 a.m.—Fine Arts Room

MRS. CHARLES D. HILL, Curator—REpublic 8249

APRIL 9TH—*Urgent Problems of the Pan-Pacific*, Dr. O. W. E. Cook. Calling card privileges at this meeting.

LUNCHEON

Informal Discussion, Dr. O. W. E. Cook.

SHAKESPEARE

SECOND TUESDAY, 10:30 a.m.—Department Room

MRS. JOHN FREMONT SALTER, Curator—ALhambra 1802-W

APRIL 8TH—*Merchant of Venice*, continued, under direction of Dr. Frederick Warde.

SPANISH

THURSDAYS—Department Room

MRS. L. P. SIMS, Curator—WHitney 4734

SEÑORA MARIA LOPEZ DE LOWTHER, Instructor

9:00 A. M.: Clase Superior; 10:00 A. M.: Clase Intermediaria; 10:45 A. M.: Clase Elementaria.

Department Notes

BETTER AMERICAN SPEECH DEPARTMENT:

Professor Charles Frederick Lindsley, Professor of Speech at Occidental College, is a speech teacher of long experience, having served at Ohio State University and at the University of Minnesota before coming to California. He has published extensively in speech magazines, his major interest lying in the application of psychological principles to speech education. Professor Lindsley has developed one of the strongest speech departments in Southern California, offering a full major program in speech fundamentals, public speaking, dramatics, and interpretative reading. He is particularly well known for his Sunday afternoon broadcasts from KHJ.

D E P A R T M E N T S

Word list: didactic feaze implicit explicit impressive expressive admiral admiration futile impious.

BIBLE LITERATURE:

Dr. Bruce Baxter of the University of Southern California, whose recent Monday afternoon lecture was so much enjoyed, will discuss the Literary Aspects of the Bible.

In Hilaire Belloc's book, *A Conversation with an Angel*, he speaks of "that enormous feat, the translation of the Old Testament into English, under James I of England. In this case, the translator was not concerned with literary effect, but with a much more important thing, exactitude of message. He was not like a man translating Homer; he was like a man decoding a foreign telegram in time of war, upon the precise value of each word in which turn facts vastly important to him. Yet this great literary effort was manifestly successful. I take it that it was achieved by the intensity of emotion involved. A man having to translate, 'The stars which rise just before the sun made a loud chorus, and the elementals directly produced by the Creator did the same in their happiness,' produced, 'When the morning stars sang together, and the sons of God shouted for joy.'"

BOOK CHAMBER:

On Friday, April 18th, the Book Chamber will hold its second and last luncheon of the year, at which book reviews will be given by members of the chamber.

DRAMA:

Farah Anguize Khanum is a Persian woman who is now a resident of Los Angeles.

DRAMA WORKSHOP:

Long ago a wise man wrote, "Appearances deceive. And this one maxim is a standing rule, men are not what they seem."

Mr. Major, however, is going to show us how we may read in the faces of those who pass along the street, something of their mental and moral standards, their temperaments and natures and even of the positions they hold in life, for such control has the mind over the muscles of the face that "by their lines ye shall know them."

Mr. Major is President of the Major School of Acting and although a young man, has had a wide experience in both European and Eastern theatres and schools.

LIVES AND TIMES:

The Ebell Juniors are invited to be the guests of the Lives and Times Department at their meeting this month. A special program has been prepared for their entertainment.

Mrs. Joseph D. Taylor, one of the artists of the afternoon, has studied at the Scola Cantorum in Paris, and has proved herself with her programs in the East as well as in the West, a delightful interpreter of song. Her skill as a violinist has given her a lovely legato, and her diction ranks with that of the best French Discuses. Mrs. Taylor will appear in some beautiful costumes.

MUSIC:

Edward Clarke and Rachel Steinman Clarke have been for many years identified with the musical life and activities of Chicago and the Central West. They have been spending their first winter in California, and have already made hosts of friends through their appearances in the principal clubs of Southern California.

These artists recently spent a winter in Spain, and brought back with them the music of that country, some classical and some popular. It is from this collection that they will give their program Wednesday morning, April 23rd.

Laura May Poler, accompanist, is a well known Los Angeles musician.

POETRY:

Mrs. Hester Alverson Moffett, editorial and feature writer, has made an exhaustive study of the poetry of Robinson Jeffers and has carried on an interesting correspondence with this poet whom many critics are heralding as the greatest of American poets. Mr. Colin Palmerston is a poet and short story writer, Miss Dorothy Haddox, poet and president of the Verse Writer's Club. Miss Mary Murphy is the sister of Mrs. Edwin Markham.

PSYCHOLOGY:

Dr. Ernest A. Holmes is Dean of The Institute of Religious Science of Los Angeles, and conducts the Sunday morning service of the Institute in the Club auditorium.

PUBLIC AFFAIRS:

Dr. O. W. E. Cook, Professor of Political Science and International Relations at the University of Southern California, will present his fourth and last lecture in a most enlightening and fascinating series.

Dr. Cook has the faculty of making each word he utters vibrant and full of interest.

We urge a "full house" to hear him, especially as the meeting of the Pan-Pacific Union in Tokio brought before the world the urgent problems of the Pan-Pacific. These are the problems concerning which we will think and study.

Club Notes

NO ALBUM PLANNED

The attention of the President has been called to the fact that certain photographers are soliciting members of Ebell to have their pictures taken for an album. No one has any authority to do such soliciting as Ebell is not preparing an album and does not intend to prepare one.

On February 28th, Mrs. Florine Wolfstein opened her lovely home at 617 South Lucerne Boulevard to the Parliamentary Law Department. A delicious luncheon was served followed by an afternoon of bridge. Many members of the department entertained their friends in this way, the only regret being that the number of tables was limited. For the pleasure of the day much credit is due to Mrs. T. O. Babb and her committee, which included Mrs. M. R. Poundstone, Mrs. L. T. Mullen, Mrs. H. F. Duryea, Mrs. W. L. R. Patterson, Mrs. A. Swanfeldt and Mrs. J. C. Kuchell.

On Thursday, March 27th, at two p.m., the department of Applied Design will give a Bridge Tea in the solarium, and the members of this department are busy with preparations for an enjoyable event. A door prize will be offered. Ebell members may bring guests at fifty cents each and fill tables and provide as many prizes as they wish to give.

Home made cakes, which have been donated, will be a feature of the tea, to be served at four o'clock. A few tables are not yet sold, and Mrs. Florine Wolfstein, chairman of ticket committee, WHitney 8327, will give information regarding them.

If you are interested in contributing to the Ebell Repair and Improvement Fund, send your renewals and subscriptions to magazines to Frances A. Stribling, 743 So. Lucerne Boulevard, Los Angeles, California. A part of each order received is placed in this fund.

During the holiday season, a very good beginning was made from renewals and subscriptions turned in to Mrs. Stribling.

Nights in the Sahara

(Continued from Page Five)

wonderful how expert these Arabs were in providing comfort and shelter.

Tea awaited us, which was most refreshing and soon we started out to view the sunset.

Climbing over dune after dune, the sand is hard and firm, we were soon aware of the approaching departure of the glorious orb of day.

Just as the sun dips over the horizon the whole atmosphere seems to turn to liquid gold, lovely beyond description; this lasts only a few moments and instantly the sky is a riot of color. Our fondest anticipations were realized, no words can describe the glory of that scene so utterly different from anything we had ever beheld.

We hastened back to camp. Darkness fell abruptly.

We indulged in a six course dinner, excellent, a combination of French and Arab dishes. We desired to eat cous-cous, the native dish, cocktails, wines followed by liqueurs and coffee. It is a marvel how the chef prepared such an elaborate affair.

"Now, Madame," said Saadi, "you must view the night." Once more we climbed high up on a sand dune, and wrapped with a blue burnous, I experienced the witchery of a tropic night.

The sky was like purple black velvet. The stars hung tremulous, like great golden flowers, the soft swish of the desert wind, the weird music played upon the desert flutes; it was all indescribably fascinating—and the dawn was equally lovely.



PRESIDENT'S AIDES

Seated—Mrs. Laura P. Joyce

Standing—Mrs. Ulysses Grant Miller, Mrs. Arthur C. Hurt.

Spanish Luncheon

Members of the Spanish department and their guests gathered at the club house February 27th for the annual Spanish department luncheon-bridge. The reception rooms were gay with color, for many Spanish costumes were worn and innumerable colorful shawls and lacy mantillas added to the Spanish atmosphere. The program chairman, Mrs. R. E. Filcher, had secured a group of artists who delighted us with a brilliant program of music and Spanish dancing.

Mrs. Irma Homer played a piano solo, Moszkowski's Concert Waltz in E Major.

Mrs. Sue Wilson gave Spanish dances. Mrs. Wilson is a well-known native California girl who specializes in Spanish dances and has done much professional work in the local clubs and other musical programs.

Madam Dellavanti, coloratura soprano, who has appeared at Covent Garden and at Queens Hall, London, gave three numbers, accompanied by Mrs. Homer.

Miss Elaine Hammond, the world's foremost woman-banjoist, gave us several numbers, both classical and modern.

Miss Cornelia Niles of the Niles Ballet, who is well known for her authentic interpretations of character, gave three Spanish numbers including La Gitana, Dance Andulasa and an improvised number as an encore. She was accompanied by Raymond McFeeters, whose work as a soloist and accompanist is outstanding. Mr. McFeeters gave us also two modern piano selections.

Luncheon followed in the dining room where Spanish colors prevailed in the table decorations. Mrs. W. L. McLeod and Mrs. R. L. Holland, co-chairmen for the luncheon, with their committee provided a tempting luncheon which was followed by several musical and dancing numbers by our artist guests.

Bridge occupied the remainder of the afternoon. During the games Miss Mamie Voigt as a lovely señorita dispensed candy and later table prizes from a ribbon-decked tray.

The pleasure of the afternoon was due to the wonderful work of the committees of whom the following were chairmen: Mrs. R. E. Filcher, Mrs. W. L. McLeod, Mrs. R. L. Holland, Mrs. F. D. Irwin, Mrs. P. W. Seals, Mrs. R. L. Byron, Mrs. H. N. Hosick, Mrs. F. A. Rauscher, Mrs. E. M. West, and the Misses Mamie Voigt and Mary McGeagh.

Program Questionnaire

Because of the ever present desire of the Program Chairman to present programs which are both instructive and enjoyable to Ebells members and because of her wish to ascertain from time to time just which programs seem to the majority to answer this purpose the following questionnaire is submitted to the members. It is not a vote but the privilege of making known your preferences in the matter of program material.

1. What type of program do you most prefer?

Music	Literature, including
Drama	Book Reviews
Art	Public Affairs
Illustrated Lectures	Travel

Please name in order of preference 1-2-3-4-5-6-7.

2. What, if any, changes would you suggest?

3. Name in their order three programs of the past two years especially pleasing.

4. Name three programs especially disappointing and why?

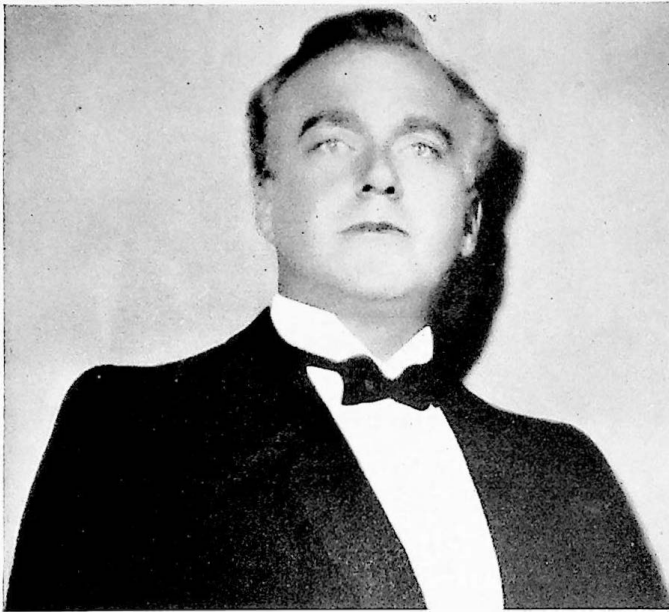
Comments and suggestions are solicited.

Sign Name.....

Return questionnaire to Mrs. Edgar S. Stanley, Program Chairman, Ebells Club.

THE APRIL PROGRAM

Monday program notes are copied each month, verbatim, from the publicity sent out by various lecture bureaus, to the program chairman. They do not express the personal opinion of any Ebell member, but they tell what others have said about the artist engaged. They are intended to serve as a helpful guide to the most profitable point of view in regard to the work and lecturer or musician under consideration.



DONALD THAYER

On Monday afternoon, April seventh, the program will be presented by DR. EDMUND H. HOLLANDS.

Dr. Hollands obtained his doctor's degree from Cornell in 1905. Since that time he has taught consecutively at Cornell, Princeton, Hamilton, and Butler Colleges. Since 1913 he has been Chairman of the Department of Philosophy at the University of Kansas. In 1926 he was made President of the Western Philosophical Association. At present he is Visiting Professor at the University of Southern California. He will lecture on "Philosophy and Common Sense."

MISS HELENA WHITFORD, who will lecture on "The Art and Architecture of India" before Ebell on Monday afternoon, April fourteenth, was for some years a teacher in the Honolulu High School. She also lived for some time in India where she had a variety of associations which gave her a broad opportunity for knowing the people of India and their culture.

The soul of India is splendidly revealed in its architecture, which has been a living art in stone since about the third century B. C. to the present time. Miss Whitford will stress the culture and impulses that have given rise to this art and will illustrate the lecture with many colored picture slides presenting the outstanding buildings of each period of India's architecture.

On Monday afternoon, April twenty-first, Ebell will present DONALD THAYER, brilliant young American barytone, who was born in Minneapolis, where he began to study the art of singing at an early age. His mother had been a concert pianist. He was brought up in musical surroundings. As a boy he studied singing with Hal Woodruff, conductor of the Apollo Club in Minneapolis.

Later, Mr. Thayer went to Boston to continue his studies. There he studied under the direction of Stephen Townsend, the well-known choral director.

After serving four years in the Navy, during the World War, Mr. Thayer resumed his studies under Oscar Seagle in New

York, which was followed by four years of study in Italy, under the world-famous teachers, Alfredo Martino and Franklin Cannone, of Rome.

Appearing in Nice and Monte Carlo, Mr. Thayer attracted the attention and won the praise of Jean de Reszke and Mary Garden, who predicted a brilliant future for the young barytone.

Upon returning to America, Mr. Thayer studied with Frantz Proschowsky, the teacher of Mme. Galli-Curci, Tito Schipa, and many other world-famous artists. It is to Frantz Proschowsky Mr. Thayer owes his greatest success.

Mr. Thayer has recently appeared at Town Hall, New York, where eastern musical critics were unanimous in their praise and in the opinion that he is one of the best new singers and will be heard much of.

On Monday afternoon, April twenty-eighth, the DRAMA WORKSHOP OF EBELL will present its annual three-act play. Mrs. Tom P. Robertson, Director of the Workshop, has selected for this program, "The Enchanted April," a dramatization by Kane Campbell of Elizabeth's famous novel of the same name. This delightful comedy possesses scintillating dialogue, humorous situations, and a charming love story.

The play revolves around four women who, although unknown to one another and from different castes and environments in life, yet are drawn together by an advertisement in a London newspaper that an Italian castle is to rent for the month of April. They rent the castle on the club plan with the understanding that it is to be a safe retreat from the male species for thirty days. What eventuates when the husbands of two of the women and a suitor for the hand of another invade the palace brings to a culmination many scenes of merriment, and of course, the big love scene. The play is being directed by one of our own members, Margaret Harvey Futch, Director of the Western Academy of Dramatic Arts. The cast includes Mrs. N. Bradford Grenham, Mrs. Chas. L. Stanton, Miss Beatrice Brand, Mrs. James R. Marcus, Mrs. Edith Van Neff, Mrs. W. W. Wright, Mr. Kenneth Randall, Mr. Paul Stanton, and Mr. Paul Morgan.

General Federation News

MISS FEDERICA DE LAGUNA, *Chairman*

The theme that is prominently before the minds of the Federation Clubs this year has to do with the home in all its aspects—the spiritual aspects, moral and mental; while at the same time the material side has not been neglected. Comfort in the home, education in the home, and above all, idealism in the home. These domestic and moral problems have been fitted to the homes of all classes, from the well-to-do home to the bare necessities of the home of poverty. Indeed, the most inspirational feature of the study has been in connection with the overworked and resourceless poor, whose homes are so pitifully lacking in the things that make a pleasant home.

Resolution passed by the Ebell of Los Angeles on Monday, February 1, 1930.

Whereas: Alice K. Parsons, our friend and beloved fellow member, has been called to her eternal reward; and,

Whereas: She was one of the founders of our club and throughout its history has been a directing and sustaining force in forming its ideals; and,

(Continued on Page Eighteen)

EBELL'S POETRY PAGE

Contributed by Members of Ebell

PILFERED PIPES

ADAH KLEINSMID MARR

When Florian pipes to the naiads of Pan,
On wings of the wind dulcet echoes are borne,

Till each sleeping sylph in her emerald glen
Awakes at the call of his silvery horn.

Then instantly springing from out gloom to glow,
From fern-mantled deeps to the countryside bright,

They whirl their white robes like a May-blossomed bough,
Or snowy doves soaring athwart the sun's light.

When Florian pipes to the naiads of Pan,
Poor Pan sits alone on his gaunt, slanted rock;

He calls all in vain to his scattering band,
Their truant lips pucker and jeeringly mock;

For Florian's shoulders wear rich rainbow robes,

His eyes are blue sapphires, his hair burnished gold;

While Pan is confounded with sharp cloven hooves,

Half human, half brute, thus of Satyr-like mold.

When Florian plays to the naiads of Pan,
The syrinx he blows is the flute that Pan made;

But shimmering figures capriciously sway
To duck-pilfered pipes of their pastoral glade,

And little they guess 'tis the same slender reed
That called them to dance in their native retreat,

For Florian's shoulders wear rich rainbow robes,

And Pan is a Satyr with poor, cloven feet.

THE BROWNING LOVE LETTERS

LOUISE WARD WATKINS

Frail bits of yellowed paper,
Tied with old, worn string,
Penned by light of a taper,
What memories they bring!

A poet, laurel-crowned,
A lady, sweetly wise,
In each the other found
The love which never dies,
Eternal and triumphant,
The world of men to tell
That life is worth the living,
The soul is sound and well.
"God's in His heaven!" Pippa sings,
And joy is everywhere,
Each season new wealth brings,
Fresh beauties ever rare.
Yet Nature's loveliest and best
With love cannot compare,
Although her balm may soothe the breast

Oppressed by dull care.
Love has a sure and subtle power
To cheer the darkest way,
And turn each weary, saddened hour
Into the light of day.

Love finds a path whercon to tread,
No obstacles it knows.
The languid woman on her bed
Through its strong sway, arose,
Forgot her ills, her grief, her woe,
Transfigured by its grace;
Left friends and family to go
Abroad for a brief space
To a southern land she held so dear,
And there fulfilled her life
Famed and beloved afar and near,
As poet, mother, sweetheart, wife.

These faded bits of paper here
So brittle and so old,
Bespeak romance without one tear,
A gentle tale unfold.

TREASURES

DAISY C. BREEDEN

It was but yesterday I sought to find
Some dull prosaic document that lay
Deep in a wooden chest where treasures stray,

And old discarded knick-knacks are con-
signed,
Or anything that cumbered up the space
Of heart or home too filled with mundane things

For memories. Their ghostly presence
brings

A blush of shame to my world-hardened
face,

And as I close the chest and turn away,
I know I lock my heart with bar and chain
Lest I should feel.

In musty disarray
Letters of love and friendship there remain;
The last most precious one my father sent—
Oh! we are too hard pressed for sentiment!

THE SILVER-LEAF MAPLE TREE

GRACE E. BUSH (Mrs. Guy Bush)

At a sudden turn in the road we saw it
first—

A silver-leaf maple tree.
Its shining and trembling arrested the eye
Like something of unearthly beauty!

It seemed a spirit-tree lighted on earth
For a fugitive moment.

The polished silver of its thousand leaves
Caught the shimmer of the sun,

And flung it back again to the blue sky
In a gentle radiance of light.

And after we had passed by,
I thought that I could still see the shining
of it;

And I said to my heart,
"Let me turn my shining side each day
To the world where I live
And give back to others
Some of the light and joy given to me."

THE HEIGHTS

EVA STAVNOW

O, let me live on the top of a hill
Where heaven's breezes blow;
And the days are calm and nights are still,
While the world is all aglow.
A hill that the sun greets first at morn
And smiles on last at night,
And that the moon and stars adorn
In a canopy of light.

My castle stands there in the air,
Veiled by a white-cloud mist,
With a heaven-reaching golden stair
Which angels' feet have kissed.
O, let me live on the top of a hill
Where song-birds' notes are clear,
And the whispering trees and a rippling rill
Tell of the earth-ties near.

For if I might climb to my palace of light
To find no friends by my side
I would turn away from its lofty height
Back to the world I had tried.
I could not abide on the top of a hill
While earth held those dear to me low;
But I would go up in my dreams there still
To bring back a bit of the glow.

SPRING IN BALLYSHANNON

PAULINE CURRAN

Published in "Critique"

Oh, to be a beggar man and sit upon a stone,
Fluting to the fairies and the birds that
pay no rent;
Or to wander dreaming up the boreens all
alone,
Caring nothing that my bit o' silver has
been spent.

I'd be blessing all the ladies giving crusts
of bread;
Always welcome in the house where there's
an empty chair,
Telling fortunes by the fire or singing for
my bed,
With a shamrock in my pocket, divil a bit
I'd care.

Cabbages and turnip rows, I'd say bad luck
to them!

(Men of Ballyshannon looking enviously at
me.)

Would that elves might find my hoe and
change it to a gem,
Sending it to mermen at the bottom of the
sea.

SPRING

HELEN LOUISE BROWN

The other side of yesterday it was not
spring,
And now today the whole glad earth her
beauties bring;
The bursting buds on tree and shrub are
but the sign
Of what our lives are yet to be, when made
divine.

SALON OF ART



ART SALON COMMITTEE

Seated—Mrs. A. Bennett Cooke, Mrs. Sidney A. Temple.
Standing—Mrs. Walter Harrison Fisher, Mrs. Willets J. Hole,
Mrs. Charles Henry Thompson.

APRIL! How time speeds when each journeying day is filled with interest! Our exhibitions of paintings and sculpture seem hardly in place when, lo, the month has passed and one group of beautiful canvases must give way to another collection of equal interest.

April will be hostess to the distinguished Mural Painters whose works we have invited. In assembling this exhibition we are again indebted to the generosity of Mr. Earle Stendahl, Mr. A. S. Cowie, Mr. Robert Vose, and to the artists themselves.

The murals of Frank Brangwyn, the greatest living painter of England, will be shown—a lunette of exquisite color and composition; also three panel decorations by Dean Cornwell, who is a pupil of Brangwyn, and a painter of such finished work that it is said Brangwyn feels the mantle of his renown will some day be possessed by the younger man. Cornwell is now in England working on the mural decorations for the Los Angeles Public Library. We should be intensely interested in the exhibited panels.

Next we shall find something by our friend, Hugo Ballin, A.N.A., whose fine murals in the B'nai B'rith Temple on Wilshire Boulevard are such a source of reverent joy and pride to us. They are vital, glowing delineation of the foundation of our material and spiritual existence, and each time studied they become more beautiful. Mr. Ballin has a charming studio home in Santa Monica, California.

Mr. Julian E. Garnsey, president of the California Water Color Society (and nominated president of the California Art Club to succeed Mr. Shrader), will have an example, or examples, of his murals in our Salon. Mr. Garnsey decorated the ceilings of Royce Hall, the main building of the U. C. L. A. at Westwood. He is a member of our Honorary Committee of Artists of the Art Exhibition Committee and has the honor of being the husband of our very own Mrs. Garnsey, who is a member of the Board of the Ebells of Los Angeles.

Mr. Armin Hansen, A.N.A., of Monterey, California, will be with us in a powerful picture of the deep seas. We have a very fine thing with us during this March exhibition—"Salmon Fleet"—remarkable handling of vivid blue. Mr. Hansen has one of his marine murals in the Hotel Del Monte at Monterey where can also be found the decorations of Dan Grosbeck—two lovely historical paintings over the huge fireplaces in the living room. Those of you who read John Steven McGroarty's description of the Santa Barbara Court House have an introduction to Dan Grosbeck. Mr. Grosbeck has immortalized himself in his murals there. Go see them, you too will be glad.

Gordon Couts of Palm Springs will also be among our honored guests of painters during April, and we hope these gentlemen will be able to come in person on the first Wednesday of the month, President's Day.

Only one artist declined our invitation to show this month—Albert Herter, N.A., of Santa Barbara. Mr. Herter is so busy on his murals in San Francisco that he could find no time for exhibitions this year, but promises to bring us some of his work later.

We have only space for the bare announcement of the Water-Color Exhibition. As you know, Mrs. Leafy Sloan-Orcutt will award an Honorarium Prize of fifty dollars for the best water-color. Honorable Mention will be given the painting receiving the greatest number of votes from the members of Ebells during this exhibition. Mr. Thomas McKay, Chairman of Exhibitions of the Society, will assemble the paintings.

Mr. Hugo Ballin, Mr. De Witt Parshall, Mr. Carl Oscar Borg, Mrs. Leafy Sloan-Orcutt and the Chairman of the Art Exhibition Committee will be the judges. Now let us all enter into the spirit of choosing the painting we like best, and at least learn the names of our water-color painters of California.

Miniature Exhibition by Miss Alice E. Ludovica, daughter of Julius Ludovica, noted portrait painter of Dresden, Germany, and New York City. Awarded medals of distinction.

We feel that a description of mural paintings will make the exhibition more interesting and have asked Mr. Julian Garnsey to tell you something of them. His article follows.

Mural Painting

JULIAN E. GARNSEY

GOOD mural painting is like the dressing of a salad. It may be the salvation of a poor building and it improves even the best building.

To be really good, any mural painting must be designed, in scale, color and significance, for the space which it is to occupy. Unless it fulfills these fundamental conditions, which have been the basis of all great decoration in the past, it will not be successful in mural quality, however clever as painting. For that reason, sketches for mural painting can be regarded only as approximations. The conditions to be met in any building—conditions of lighting, surrounding materials, height above the floor line, and so forth,—will make necessary modifications in the finished work of any scheme presented by a sketch. Sometimes such modifications must be made during the progress of the work. In the Sistine Chapel, for instance, Michelangelo found it necessary to change the size of his figures after some of them had been completed, and we find those at one end of the Chapel larger than those at the other.

In the great days of the Italian Renaissance, important decorations were done in place. Nowadays, under the necessity of speed in building operations, this is seldom possible, and the mural painter must develop a sixth sense, by long experience,

(Continued on Page Twenty)

EBELL JUNIORS

REGULAR MEETING

The April meeting will be held in the Fine Arts Room on Wednesday, April 9, at two thirty o'clock.

We were fortunate in securing as our speaker Mr. Edgar Harrison Wileman, the "Consulting Decorator" of Barker Brothers. Mr. Wileman lectures on interior decoration at the University of Southern California and the University of California at Los Angeles. He also gives a series of lectures at Barker Brothers.

His lectures will be on the general decoration of the home and the arrangement of the rooms. He will illustrate his lecture with new color schemes and fabrics. Mr. Wileman will be glad to answer any questions regarding the home.

This program should prove interesting to anyone planning a new home or the re-decoration of an old one.

A special invitation to attend Mr. Wileman's interesting lecture is extended to the regular members of Ebell.

IMPORTANT NOTICE

As Mrs. Daniel Gaines Hon is moving out of town, all reservations for the monthly card party must be made by phoning Miss Mary McGeagh the day before the party at ROchester 8137.

JUNIOR BOOK CHAMBER

In spite of the rain, the February meetings of the Book Chamber were marked by unusual response and interest. At the last meeting the following books were reviewed:

1. "Dido," by Gertrude Atherton (Winifred Huntington). The story of the Queen of Carthage painted in a most interesting and human fashion.

2. "A Mother's Cry," by Helen G. Carlisle (Mrs. Dwight Reay). A novel dealing with the commonplace struggles of a mother with four children.

3. "Grandmother Brown's Hundred Years," by Harriet C. Brown, (Lois McQuiston). A fascinating biography giving the story of a woman's attitude toward life from 1829-1929.

4. "Early Autumn," by Louis Bromfield (Lois McQuiston). One of the novels of a trilogy giving the family history of the Pentlands.

5. "Hans Frost," by Hugh Walpole (Helen Houston). The story of a seventy-year-old man breaking from the tyranny of his wife to gain solitude and contentment in which to write his masterpiece.

6. "Queen Elizabeth," by Katherine Anthony (Elizabeth Lloyd). An interesting though somewhat sarcastic biography in which the character of the queen is made predominant over the facts of history.

7. "New Worlds To Conquer," by Richard Halliburton (Mary McGeagh). The adventures, humorous and otherwise, of the author in Central and South America.

The first meeting in April will be held on Thursday, April third, at the home of Winifred Huntington, 1733 North Wilton Place, at two o'clock.

The second meeting will take place at the home of Lois McQuiston, 1871 Virginia Road, on Thursday, April seventeenth, at two o'clock.

If you plan to attend either meeting, please call Mrs. Thom at WHitney 6328.



EBELL JUNIORS COMMITTEE

Standing, from left to right: Winifred Huntington, Credentials Chairman; Mrs. Dwight Reay, Scholarship Chairman; Mrs. Hayes Halverson, Program Chairman; and Mrs. Arthur Daves, Courtesy Chairman. Seated, from left to right: Mrs. Leslie Bowden, Drama Chairman; Mrs. Wayne Hickey, Ticket Chairman; Mrs. Daniel Gaines Hon, Work and Play Chairman.

OFFICERS

Miss Lois McQuiston.....President
ROchester 3782

Miss Ruth Kennedy.....
.....First Vice President
WYoming 5712

Miss Ruth Morrison.....
.....Second Vice President
ROchester 4188

Mrs. Harold Craig.....Secretary
ORegon 8364

Mrs. J. Ellsworth Ross.....Treasurer
OXford 3981

THE CREAKING CHAIR

The annual three-act benefit play of the Ebell Juniors was presented March 4th at the Ebell Auditorium (Windsor Square Theatre). Without doubt it was one of the best plays presented by the Ebell Juniors.

Much credit should be given to Mrs. Leslie S. Bowden and Mr. King Baggot, who staged and directed the play.

We are grateful for the privilege of again seeing a favorite of both stage and screen, Mr. King Baggot, and hope to have him with us again.

The characters in the play were as follows:

Angus Holly.....Mr. Paul Fort
Aissa.....Mr. Eugene Radovich
Anita Latter.....Mrs. Leslie S. Bowden
Rose Emily Winch.....Miss Beatrice Brand
Edwin Latter.....MR. KING BAGGOT
Sylvia Latter.....Mrs. D. Gaines Hon
Mrs. Carruthers.....Mrs. R. S. Redington
John Cutting.....Mr. Harold Enfield
Philip Speed.....Mr. Carl Fredericks
Oliver Hart.....Mr. Bert Morse
Henley.....Mr. Walter Mathews
Jim Bates.....Mr. Bob White

Every member of the cast gave a splendid interpretation of his part.

Mrs. Earl Oakley was extremely capable as stage manager of the production. Mrs. Frederick C. Beyl was her assistant.

The play was well attended. The audience gave much to the success of the production in their enthusiastic reception.

FASHION SHOW

Next month will find us busy in preparation for our annual Spring Fashion Show, which is scheduled to take place in May.

At this early date plans have not been very fully made, but we know that the affair will be in the nature of a bridge party, after which the models (recruited from our own Juniors) will circulate among the tables in the main dining room while hostesses and their lucky guests have their Tea.

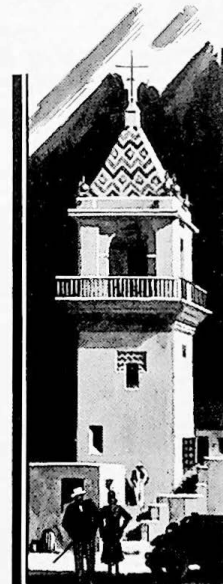
The gowns displayed will be of a nature suitable to late Spring and Summer wear and should be of great interest to all. For who could resist the long, flattering printed chiffons, the smart black pajamas, and the seductive evening wraps that will be featured?

WORK AND PLAY

(With apologies to K. C. B.)

I'm here to say
If you've failed to come
To a Junior bridge party
You've missed a lot
So you'd better plan
To come next time
On April 25th
At two o'clock
In the Solarium
At the Ebell Club
And you will get 100
Added to your score
If you're there on time
So make an effort
To be on hand
Because you'll have
The time of your life
I thank you.

—By Mrs. Daniel Gaines Hon.



YOUR days may be complete with the rhythm of gaiety or the sweetness of leisure. The nights are reserved for your profound repose. Cuisine that revitalizes dormant appetites. Individual, painstaking service. You've planned to someday visit Palm Springs. Make that "someday" now.

Warren B. Pinney

el mirador
PALM SPRINGS **hotel**
CALIFORNIA

SOCIAL WELFARE ACTIVITIES

Social Welfare

Mrs. CHARLES E. CRARY, *Chairman*

Of all the work being done in Ebell it seems to me there is nothing more worth while than the work of the Social Welfare Department for it blesteth not only him who giveth but him who receiveth.

Each year in the early spring the department has its annual luncheon. Such a luncheon was given recently and it was most interesting to hear the reports of the several chairmen. Mrs. Wherry, chairman of Rest Cottage, confined her report mostly to extracts from letters of past and present guests of the Cottage whose appreciation was unbounded for the physical and mental uplift they had received while there.

I wish more of the Ebell members would drop in occasionally at the Cottage, which is situated at 135 North Park View Avenue, just off of First Street, and see what an attractive, home-like place they are giving to the guests. The atmosphere of peace and contentment is felt as you enter the door.

It is a privilege that we are able to help put a little happiness and courage into the hearts of these guests who come to us from time to time, of whom so far this year there have been a hundred or more. Mrs. William Read, who was the first chairman of Rest Cottage, told how after the Cottage had been given to Ebell by Miss Flanders they started out with a sum of forty-two dollars in the bank with which to run it. That sum has been gradually increased by the dollar memberships which our Ebell members have the privilege of giving annually, by life and memorial memberships, and by contributions from the Benefits and Entertainments Committee until now, the Cottage not only belongs to us, but we have accumulated an endowment or reserve fund of over thirty-four thousand dollars—a good beginning.

Mrs. Fletcher, Chairman of Practical Relief, told of the work being done by her little band of workers. Her report was short and she could only touch on a few high spots. Referring to the aid given each year to the disabled veterans, both at Christmas time and during the year, to rehabilitating some of our Rest Cottage guests so they could be well dressed when leaving, which means so much when one is looking for work, and also to dressing many of our students. Mrs. Fletcher and her committee just love these young girls. It does their hearts good to dress them neatly and prettily and that is why they appreciate it when members bring in clothing they can use for that purpose. She would also appreciate the help of any of our members who can sew and who have a few hours they can give on Fridays. This Practical Relief Committee is so small it is a wonder they can accomplish as much as they do, and they deserve all the more credit on that account.

Mrs. Dunlap, the Chairman of Scholarships, told of our scholarship girls and the high ideals the Scholarship Committee holds for them. She said in selecting our girls "more and more we insist on marked ability and fine character" and their ideal was that it should not only be accounted a privilege but an honor to be an Ebell Scholarship girl. There are at present twenty-three students who are the recipients of these scholarships.

Our Lives and Times Department, of which Mrs. Raymond Tremaine is Curator,

has a scholarship girl also and they take great pride in the good work she is doing at college and in helping her in whatever way possible.

Not to be outdone by their seniors the Juniors, as reported by Miss Lois McQuisition, have a group of children they are caring for. They take great pleasure in dressing these children and seeing that at Christmas they are well provided with toys and a basket filled to the brim with everything pertaining to a fine Christmas dinner.

We were very happy to have as our guest of honor this year Helen Mathewson Laughlin, Dean of Women of University of California at Los Angeles. Those who have heard Dean Laughlin know what a dynamic speaker she is. She is so interested in her girls and her work at the university that the young women are most fortunate in having one who so thoroughly understands their problems and has their welfare so much at heart.

As Dean Laughlin says, she is for the modern girl—and you can realize it as you see and hear her talk about them. The Dean spoke about the old State Normal School which was the forerunner of the university in the South and told of a number of men and women who graduated from there and have since made their mark in

the world, prominent among them being Mrs. Herbert Hoover.

She also said that at present there are over six thousand students at the Uni-California at Los Angeles, over half of these being women.

Dean Laughlin paid especial tribute to Ebell for the assistance it has given college girls. She referred to the Helen Mathewson Club, which houses twenty-five self-supporting girls, most of them being honor students and Ebell scholarship girls. She also spoke of the need for further help for girls at college and said: "I am now looking for a philanthropist who will build a home where girls can do light housekeeping at a rental of not more than fifteen dollars per month. We desperately need houses for students who have little to spend."

REST COTTAGE MEETING

The speakers on the March Rest Cottage Association program were Mrs. Henrietta Muir, superintendent of nurses, and Miss Herzog of the Social Service Department of the Los Angeles County General Hospital.

Mrs. Muir pictured in a very interesting manner the necessary equipment of a large city for the care of its needy, and described very clearly, the equipment and plan of the new General Hospital.

Miss Herzog spoke of the Social Welfare work. She expressed her appreciation of Ebell Rest Cottage and what it meant to convalescent women of the General Hospital who needed this rest until their strength permitted them to return to their work.

A new program plan has been inaugurated for the Rest Cottage meetings. Social conditions and the development of social welfare work of various countries will be studied and presented by club members who have visited these countries.

On April first, Mrs. Sharon will tell of conditions as she found them in India and Mrs. Jevne will give her impressions of Egypt.

These programs are open to all members of the club.

OFFICERS

Mrs. Charles Egleston Crary,
Chairman

Mrs. T. J. Fletcher
Chairman Practical Relief

Mrs. William R. Wherry
Chairman Rest Cottage

Mrs. Samuel Cary Dunlap
Chairman Scholarships

Mrs. Frank Brown Wheat
Chairman Benefits

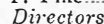


OFFICERS OF EBELL REST COTTAGE ASSOCIATION

Mrs. William R. Wherry.....*Chairman*
Tel. WY 3419

Mrs. Willis Charles Sharon.....
.....*Assistant Chairman*

Mrs. Walter E. Barrett.....*Secretary*
Mrs. Charles T. Pike.....*Treasurer*



Mrs. A. Bennett Cooke, President
Mrs. Julian Ellsworth Garnsey, Au-
ditor

Mrs. Jack Armstrong Jevne
Mrs. T. Paul Jones

Miss Hattie A. Newman



Ebell Rest Cottage

Yearly Memberships



Associate Dues.....	\$1.00
Contributing Dues.....	\$2.00 or more
Sustaining Dues.....	\$12.00
Life Membership.....	\$100.00
Memorial Membership.....	\$100.00
<i>Will you help us carry on this work?</i>	

ARE YOU A BIG SISTER?

Mrs. JACK ARMSTRONG JEVNE

How would you like to be a "big sister" to some unhappy girl, whose life you may be able to reconstruct?

Take, for instance, the story of our little friend, let's call her Mary.

Mary came to Rest Cottage from the General Hospital, so weak she could hardly speak; so sad, so quiet and uncomplaining; one could immediately see she was going through some great sorrow. After a time of complete rest, good food and pleasant environment she felt she was among friends and told us her sad story.

She was happily married in Arizona and expecting her first baby. One morning her husband kissed her good-bye as usual. That evening she prepared dinner but her husband failed to appear. Alarmed, she tried to find him but discovered he had closed up his prosperous business and disappeared. The police tried to locate him but all efforts were futile.

She came to Los Angeles heart broken. After a few months her baby was born, a weak little thing with a hair-lip. The baby was left at the hospital while Mary came to the Cottage in an effort to regain her health. Ten days after, Mary, while in the Cottage, had another shock, her baby had succumbed to pneumonia. Still another

(Continued on Page Nineteen)

The BOOK PAGE



NOVEMBER CREDENTIAL COMMITTEE
 Standing, left to right—Mrs. J. Lee Penn, Mrs. Lee P. Jordan,
 Mrs. Henry P. Clarke.
 Seated—Mrs. B. Dudley Snudden, Mrs. Watson Eugene Barnes.

A FEW WORTH-WHILE BOOKS

It was on that first balmy summer Sunday morning that I was asked to write the Book Page. Anything was possible that morning and writing seemed as delightful as listening to the birds sing. It is cold and quiet and foggy tonight!


One book which has left a lasting impression I want to pass on, even though most of you have heard it reviewed. We discovered at the last Book Chamber meeting that a book could be reviewed by two people, each one giving an entirely different point of view, in fact, it was difficult to believe that the reviewers had read the same book. In Hughes Mearns' book, *Creative Power*, a plea to encourage self-expression, he says that children are creative persons who use language not as an end but as a means of expressing thought and feeling. He says: "The attention is never on the word but on the force that creates the word." He never "corrects" the children's papers. Instead he looks for the thought or the picture the child is trying to convey.

Let us hope that the young today are being taught with some of these ideas in mind. Perhaps we can start a movement to have the school teachers read Mr. Mearns' book. Another thought for teachers and mothers who expect great results in watching their children's progress he presents in a clever way. A lady, greatly discouraged after observing the children, is told to go out on the grass and watch the dandelions grow. Of course, nothing happens. She cannot watch them grow nor watch the children develop. The entire book is filled with delightful bits of poetry, children expressing themselves.

Another book which I have just read because I was interested in the author rather

paper which usually shows the picture of a prize fighter about to charge. than the title of the book, is *The Iron Man* by W. R. Burnett. This book presents the life of a prize fighter. Mr. Burnett makes the reader as well acquainted and sympathetic with this fighting man and his cronies as with the gang leader in his first book, *Little Caesar*. He shows all the intrigue, the double-crossing companions, the trickery of the managers, and the unnatural existence, entirely ruled over by gamblers and crooks, which the prize fighter is forced to live. After reading the book one can have some understanding of that page in the morning

(Continued on Page Nineteen)



Members

Of the Book-loving Brotherhood will welcome the news that the "Sign of the Satyr" will soon mark a new location at 3929 Wilshire Boulevard, where you may obtain your first-editions, and new and rare books with greater ease...

3929 Wilshire Boulevard

THE SATYR BOOK SHOP

NEW-OLD-AND-RARE-BOOKS
 1622-NORTH-VINE-ST.-HOLLYWOOD
 3929-WILSHIRE-BOULEVARD

BOOKS

Newest Novels - Biographies - Non-Fiction - Gift Books - Reprints
 Best Books for Boys, Girls, and Little Tots - Greeting Cards

WILSHIRE STATIONERS

Washington 1860 541 So. Western Ave.

JONES BOOK STORE

Now At

734 WEST SEVENTH STREET

Between Hope and Flower

Telephone: TRinity 7286

Formerly at 426-428 West Sixth St.

Books for Grownups

THE CHILDREN'S BOOK STORE

638 S. Figueroa St.
 Los Angeles, California

Mrs. Valley's Selection of Books procurable at the

La Brea Circulating Library

849 South La Brea Avenue and
 Las Lomas Library
 1057 Westwood Boulevard

HARRIET TODD CARTER

Los Angeles Representative

Encyclopaedia Britannica

ALICE BALLARD
 586 No. Gower
 GL 4534 If No Answer, HE 8706

THE TWO SEAS

Address by Phares Anton BeHannesty before the Art and Travel Department

IN THE very heart of my native land there lie two bodies of water that are remarkable for their physical features, past history and present aspect. The name of the one is the Sea of Death, that of the other the Sea of Galilee. These two inland lakes are only a few miles apart, and yet the character of the one is as far above the other as the heavens are above the earth. Both receive into their bosoms the same sweet waters of the Jordan, as well as those of other mountain streams, and yet the water of the one is intensely bitter, salty and poisonous; no life can exist in its fatal depths, while that of the other is fresh and wholesome, sweet to the lips of man and beast. It is especially famous for the countless variety of fish which therein abound.

The country surrounding the Sea of Salt is as dead and barren as the Sea itself, and nourishes but two kinds of trees, and both of those are worthless. The one is that out of which was composed the Crown of Thorns for Him who died on Calvary; the other has fruit resembling golden apples, which, when you offer to taste them, crumple to ashes on your lips.

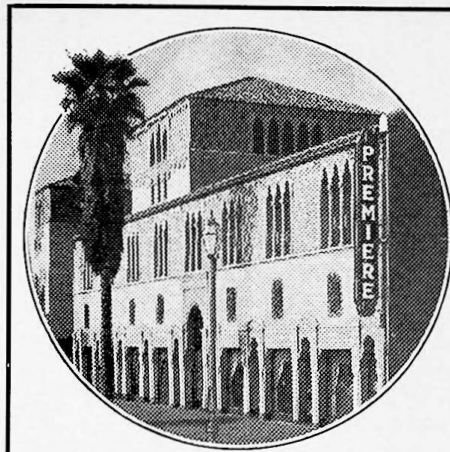
The region adjoining the Sea of Galilee is wonderful for its surpassing fertility. Almost the year around it is a perfect paradise of beauty. Not only oranges, lemons, laurels and magnificent oleanders flourish there in profusion, but the entire country is embellished with luxuriant wild flowers and crested with the clinging fingers of a thousand vines; and as one inhales here the sweet air of blossoms, and hears the chorus of the nightingales as they chant their heavenly music, he realizes his youthful dreams have been fulfilled; at last Galilee with its beautiful Rose of Sharon is all he fancied in childhood.

To him who may chance to visit these two unlike seas the contrast is wonderful beyond description. It is a never-to-be-forgotten moment when he looks for the first time upon the shining waters of the Dead Sea as they extend before him to the very horizon. Strange and memorable scene! High mountains tower above them to the east and west and seem to rise from the gloomy shores heavenward in their robes of purity as some celestial visitors might withdraw from the dark, evil passions of mankind. To the south extends a long, narrow belt of sand and ashes. From the north flows slowly the mighty Jordan, desirous apparently to prolong its luxuriant meanderings in the silent valley, reluctant to pour its sweet and sacred waters into the accursed bosom of a sea doomed to inactivity. Not a cloud breaks the blue serene of heaven and not a breath stirs the air. Scarcely a ripple relieves the glassy surface of the lake. The silence is most oppressive. Oh, for the voice of a bird, the hum of an insect to break in upon the overwhelming monotony! Oh, for a screen of leafy boughs to shelter from the glow of the sun and the glare of the sand!

What an impressive evidence there exists along this barren strand of the conflict between the forces of life and death! Here and there are scattered trunks and branches of trees—venerable patriarchs of the forest—rent by violent floods from their ancient dwelling places near the sacred river Jordan, dashed into the Sea of Salt; then, after being steeped in brine, flung upon the dreary beach to petrify into mute memorials of the past. Dead, yet they live. Voiceless, yet they speak, and with a voice in comparison with which the mighty roars of Niagara are but a whisper.

But why should one linger amid such gloom? Let him but behold the Sea of Galilee and he is at once enraptured. On every side the scenery is charming. Glorious indeed are the glimpses which he gains of the Galilean shore, to which history, poetry and legend give undying interest. Blue beneath the Syrian sun, flecked with light shadows of the passing clouds; or dark and wrathful beneath the storm, this Sea is a constant source of pleasure and fascination. Paths of ideal beauty wind about its shores, sun-sheltered by the trees, rendered cool and fragrant by the breezes from those calm waters upon which the Man of Galilee

(Continued on Page Twenty-two)



FROM A COOKIE to a WEDDING CAKE

Successful hostesses rely upon *Premiere* for fine quality and excellent service.

*Pastries, Candies and
Ice Creams*

Premiere
3717 Wilshire Blvd.
Bet. Serrano & Oxford

*Luncheons
and
Dinners*

Daily in our
Tea Room.
Tasty lunch-
eons, 11:30 to
2:00 at 50c.

Savory din-
ners, 5:00 to
7:30, at 85c
and \$1.00.

Special Sun-
day dinner,
noon to 7:30
at \$1.00.

*As near to
you as your
telephone. . . .
Prompt deliv-
eries. Phone:
DRexel 3163.*

How many fares, please?

When you ride by street car, you get there—and you only pay one fare.

When you ride in your automobile downtown you usually get there—but you pay more than once! You pay the garage—the gasoline station—the tire shop—the insurance company—the parking station—the car washer, and so on until you begin to wonder where the thing stops, anyhow.

Use your town car, the street car, for town use and increase your bank account.

Los Angeles Railway

General Federation News

(Continued from Page Eleven)

Whereas: Her life was an example of noble service and high endeavor in her guidance of the young, and in her loyal support of the best interests of her community: Therefore be it,

RESOLVED: That we, the Ebell of Los Angeles, on this seventeenth day of February, 1930, do hereby express our deep loss in her passing, and pay a loving tribute to her memory: And be it further,

RESOLVED: That a copy of these Resolutions be sent to Miss Emmie H. Parsons, her sister and our dearly loved fellow member, and to her brother, George W. Parsons.

FREDERICA DE LAGUNA,
Chairman of Resolutions.



Another subject that obtains with the clubs throughout the land is Law Enforcement. Through Mrs. Urquhart California stands well in the van for profound interest in the progress of this movement. She says, "It is fitting for the loyal federated women of the United States to once more dedicate themselves to the accomplishment of this nation-wide plan of Law Enforcement. . . . There is no greater incentive to work for a full understanding and enforcement of our Eighteenth Amendment than the crying need of women and childre in foreign lands. For the sake of the world, America's prohibition experiment must not fail."

HOLLYWOOD EMPLOYMENT AGENCY

OLympia 1987

High class domestic help
Laundresses and Cleaners

Wilshire, Hollywood and Beverly Hills Our Specialty
4366 Sunset Blvd. Established in Hollywood 1921

Think
When
You
Drink



Mountain Spring Water is used exclusively by the club. Why not use it in your home. *A Natural Flowing Spring.*

Any member of the Ebell Club who cuts out this advertisement and turns it into the *Ebell Club* office will receive one bottle of water free.

Phones: GARfield 4381-4380

MOUNTAIN SPRING WATER CO.
226 So. Ave. 54 Los Angeles

TRANSITONE!

IN TUNE
WITH
THE
WORLD

You are never alone
with a TRANSITONE

THE AUTO RADIO

Concealed Installation

WESTERN AUTO ELECTRIC CORP.

Distributors

1601 South Hope Street, Los Angeles
Phone: WEStmore 1441

"When It's a Matter of Good Taste"

The Wilshire Caterers

Ice Cream—Cakes—Pasteries—Ices

692 So. Vermont

WAShington 1204

Edwards' Petland Bird Store

Largest Stock of Talking, Song and Fancy
Birds. Everything for Them

J. C. EDWARDS

Oldest Expert and Fancier

629 South Grand

VAndike 9317

LINOLEUM FLOORS

Represent Style, Beauty, Quality, Value

On our display floor we feature all the newest designs, hundreds of beautiful patterns, selected from the leading linoleum mills of the world.

Staines Imported - Nairns "Scalex" - Armstrongs

Our expert workmen are master craftsmen in the art of laying Linoleum, which assures our clients floors that will remain in perfect condition.

LINOLEUM SHOP

Phones:

3910 West 6th Street

WAShington 8572 and 3373

Window Shades

Rubber Tile
Linoleum Tile

Drapery Rods
(Brass or Wrought Iron)

NUTS

NUT CANDIES

NUTTY ICE CREAM

*"Fresh every day in every way,
Raw, cooked, roasted,
Blanched, dipped and toasted."*

Give us a ring for your party orders.

4967 West Pico - - - - - Phone, OREGON 4901
5629 Wilshire - - - - - Phone, OREGON 2680



CASH OR ROMANCE

*Will buy real lace for wedding gowns. An interested in either rose point flouncing or scarfs.
Please write, stating size and price.*

2328 West 7th Street

PANAMA CANAL
HAVANA • NEW YORK

A G L O R I O U S 5000-MILE C R U I S E

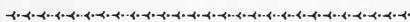


YOUR TRIP EAST IS A
VACATION IN ITSELF ON
THESE GREAT ELECTRIC LINERS

For 16 carefree days leave worry and trouble behind. Take it easy. Just loaf. That's the simple prescription many doctors recommend. Or if you want action there are deck sports, swimming, dancing, etc.

You pass thru the gigantic Panama Canal, visit Balboa, historic Old Panama. Then under tropic skies to Havana, gay pleasure city of Old World charm—and on to New York.

The great electric fleet of Panama Pacific Line, the largest vessels ever built in America, herald a new era in ocean travel, affording unbelievable comfort at sea. All state-rooms are outside.



Rates are \$135 up Tourist Cabin, \$300 up First Cabin (\$275 after Apr. 16). Private bath, rooms en suite with private verandah, if desired.

S. S. VIRGINIA
CALIFORNIA
PENNSYLVANIA

Alternate in fortnightly service between California and New York. Special fares for "one way water, one way rail" trips. Go by sea, return by rail, or vice versa.

Panama Pacific Line
INTERNATIONAL MERCANTILE MARINE COMPANY

PANAMA PACIFIC LINE (Dept G 4)
460 Market St., San Francisco

Please send me your free booklet —
"Traveling Around America"

Name _____
Address _____

Other Offices — Los Angeles, Seattle, Vancouver
— or your local steamship or railroad agent



MRS. HARRIET S. GREENFIELD

Mrs. Greenfield has kindly furnished music for the club members in the reception room before the Monday meetings.

Are You a Big Sister?

(Continued from Page Fifteen)

blow, she found out, by having the records searched, that she had never been legally married, her husband had had a fake ceremony performed.

Mary's recovery was retarded by a very weak back so a special corset was obtained for her and little by little her strength returned. Through her untiring effort she secured a position but the strain was too much, she broke down and returned to the Cottage. On return to Rest Cottage, a young member of Ebelle coached her in stenographic work and when Mary slowly regained her strength she was able to take a position in a real estate tract office.

She worked hard, she loved her work, she saved enough money to buy a Ford on the installment plan, which she used to take her back and forth to the office, which was some miles out in the country.

As is customary, we kept in touch with Mary and a short time ago we received a wedding announcement from her and a note saying how happy she was in her new home.

Mary's plight was just one of many of similar nature who have come to us with their troubles and some "big sister" has had the privilege of helping.

Constructive work of this type is what makes the follow up work of Rest Cottage worth while and an extreme delight for those who have the joy of being connected with it.

The Book Page

(Continued from Page Sixteen)

In case you have wanderlust or a desire to get off the beaten path, you will perhaps enjoy a journey with Richard Halliburton in *New Worlds to Conquer*. Mr. Halliburton seems to be rather generally disliked but he certainly accomplishes all that he sets out to do and writes about it in a most interesting and entertaining way. This story of adventure abounds with unusual exploits. He climbs to the crater of Popocatepetl, swims the Panama Canal, dives into the famous Well of Death in the land of the Mayas, climbs high into the Andes

to the ancient City of the Incas, plays hurdy-gurdy man in Buenos Aires and Robinson Crusoe on his own island. He also gives a very clear picture of French Guiana and the horrors of Devil's Island. The book is filled with interesting pictures. Surely this is ample material, some of which should interest the most blasé reader.

What a joy we can find in books these Spring days when perhaps our interest is on the high seas, roaming about London, watching Victoria Falls, or exploring the haunts of the other half of the world—and we must remain at home. Still there is never a dull moment. All we need do is turn to the library, turn on the light, and there we are!

MRS. ELBRIDGE R. THRAPP
Secretary Book Chamber.

Philippines Employment Agency
PABLO DARIO CASTRO
We Furnish All Kinds of Help on Short Notice
Experienced Chauffeurs, Cooks, Butlers, House-boys, Janitors, Waiters, Bellboys, Schoolboys, Etc.
Telephone V Andike 3088 107 N. Los Angeles Street

Flowers for all Occasions
Hollywood Knickerbocker Florists
Hollywood Knickerbocker Hotel Lobby
GRanite 2767 1714 Ivar Avenue
GLadstone 3171 Hollywood, Calif.

Mend your speech a little,
Lest you may mar your fortunes.
Shakespeare.
Power — Clearness — Intonation
Quick Results via Scientific Methods
For Appointment: ROchester 4794
Mrs. David Douglas Hugh

Try Christine Terp's
Royal Brand Candy
MARZIPAN AND TRUFFEL
3043 West Seventh Street
Phone: EXposition 1990
We Ship and Deliver



LADIES KEEP FIT

- | | |
|---------------------------------|-----------------------------|
| Individual Corrective Exercises | Massage: Electric & Swedish |
| Electric Sweat Cabinets | Physical Examinations |
| Sun Baths | Dietary Instruction |
| Therapeutic Lights | Weight Correction |

"Be Our Guest"

Dr Lovell's Physical Culture Center

154 W. 12th St. WESTmore 1481-2-3
Personal Consultation



Mural Painting

(Continued from Page Thirteen)

whereby he may foresee the effect of his decoration, which is painted on canvas in his studio, in the space for which it is intended. The necessary experience is gained only through trial and error. It comes as a result of having had many opportunities to do work at full size and by learning from each piece of work what not to do next time. So the development of an important school of mural painting, such as we hope for on this Coast, will come only through the offering of many opportunities.

The subjects for mural painting may be found in history, in present greatness and in future aspirations. Southern California is rich in all these respects. She has an unrivalled heritage of colorful historic incidents in the periods of Spanish occupation, the coming of the Americans, the finding of gold, and so on. She has subjects at hand in the present industrial activities,—oil, oranges, shipping, manufactures, motion pictures, and a whole series in the variety of natural scenery found on her long coastline. And who shall set a limit to the future possibilities of this part of the world, or to the imagination of the artist in his prophetic vision of their accomplishment?

Great mural painting has been in the past the hand-maiden of great architecture, which has been, in turn, the child of prosperity. In Southern California we have been prosperous, and our architects have measured up to the opportunities given them to an extent which is admired by the whole country. Interest in our architecture will also develop and will become a new influence, to our gratification and pride. If the necessary opportunities are given, such a happy result may be expected.

SCHOLARSHIPS

It is fitting as a part of our educational program that our Scholarship students should have been identified with the Public Affairs at the meeting on March 12, when the Chairman, Mrs. Charles D. Hill, graciously welcomed them to the platform, to receive their prizes won in the essay contest. Ten essays on "The Meaning and Scope of Citizenship" were carefully considered by the Judges, Mrs. Robert Moulton, Chairman, assisted by Mrs. Sidney Parsons and Mrs. Henry Levinson. The first prize of \$50.00 went to Miss Toby Edison, a junior at U. C. L. A.; the second, to Mrs. Beulah Alexander, a Senior Assistant in the Home Economics Department at U. C. L. A.; the third, to Miss Rosalie Botterell, a Freshman at U. C. L. A. and the fourth to Mr. Raymond Labory, of the California Institute of Technology at Pasadena. Miss Toby Edison spoke for the group in a few words of deep appreciation of the honor of holding an Ebell Scholarship and of gratitude to Mr. and Mrs. Charles N. Flint. The four winners were guests of the Scholarship Chairman at the Law Observance luncheon afterwards. They had such a happy time visiting the Ebell "University" and were more than interested in our educational programs.

This is the second Essay Contest sponsored by Mr. and Mrs. Flint, whose continued interest in Scholarship is giving Ebell an enviable reputation in the community. Again, we thank them heartily.

MRS. SAMUEL CARY DUNLAP,
Chairman of Ebell Scholarship Committee.

WITZEL

Photographer
for
Ebell Magazine

1011 West 7th St
VAndike 7596

6324 Hollywood Blvd.
HOLLYWOOD 8905

FOR THOSE NOT SLENDER



CHIFFONS

for Dinner-*Informal*
and *Afternoon Wear*

PASADENA
624 E. Colorado St.

Peterson's
LOS ANGELES
738 WEST SEVENTH

216

Regular Sizes 36 to 46 — Stout Sizes 38½ to 54½

COOK'S TRAVEL SERVICE

A COMPLETE WORLD-WIDE ORGANIZATION

*Information Given and Special Itineraries
Planned for Individual Travelers to All
Parts of the World*

STEAMSHIP TICKETS BY ALL LINES
AT LOWEST RATES

Official Agents of the
PASSION PLAY

AT

OBERAMMERGAU

Thos. Cook & Son

623 So. GRAND AVENUE

*In Co-operation With
WAGON-LITS CO.*

The Wilshire Jewelers
 CALVIN SMITH
 626 South La Brea
 A complete and modern jewelry store and manufacturing plant. Expert workmanship in remodeling old into modern pieces of jewelry.

IMPORTATIONS OF EXQUISITE LINGERIE
 CHINESE SILK—Hand-embroidered. Each piece a creation, luxuriously soft and fine.

LACES FROM INDIA
THE RICKSHAW
 1485 North Vine St., Hollywood (at Sunset)

WHEN FUR MINDED SEE

 935 So. Broadway
 3rd Floor
 Los Angeles
A COMPLETE FUR SERVICE

**Luncheon - Afternoon Tea
 Dinner**
THE ORANGE TEA SHOP
 3846 WILSHIRE BLVD.
 For Bridge Teas and Luncheons
 Phone DRexel 9509

414 W. Main St. 370 Blackstone Ave.
 Visalia, Calif. Fresno, Calif.
Estrada's Spanish Kitchen
 3520 Wilshire Blvd.—WA. 5226
 Los Angeles, California
DINNERS and SHORT ORDERS
 11:30-2 4-12 midnight
 Mission Road 108 W. Cota St.
 Colma, Calif. Santa Barbara, Calif.

The Cake Box
 The "Goode" Things to eat.
 6621½ Hollywood Blvd.
 GRanite 6818
 Pasadena
 20 So. Garfield Ave.
 Wakefield 8770

The Arcady
Bridge Luncheons!
 The delightful Pompeian Room of the Arcady is a charming place to entertain one's friends. Cuisine and service of the best. Private dining rooms available.
 So CONVENIENT for your friends, just two blocks west of Westlake Park at Rampart and Wilshire.
LUNCHEONS, TEAS & BRIDGE LUNCHEONS
SEVEN-COURSE DINNERS
 a la carte service
 Ftzroy 5161
2619 WILSHIRE BLVD.

Ebell's Library

The Library will be open:
 Mondays from 10:00 A.M. until 2:00 P.M. and one-half hour after program.
 Tuesdays from 10:00 A.M. until 12:30 P.M.
 Wednesdays from 10:00 A.M. until one-half hour after luncheon.
 Thursdays from 10:00 A.M. until 12:30 P.M.
 Fridays from 10:00 A.M. until 12:30 P.M.
 On fourth Tuesdays the Library will be open until 4:00 P.M.

A BOOKISH PARTY

At this time of the year when we are having annual luncheons and benefit parties, we caught the contagion and decided we must have a frolic of some kind in the Library. We knew there would be many notables present, we wanted to have everything jolly and informal, so we called ours a St. Patrick's Day party.

We were all agreed that "Disraeli" must be master of ceremonies because he is so well known and so much admired. Princess Der Ling assisted him, and made us each "Kowtow" to "Old Buddha." She had spent "Two Years in the Forbidden City" and knew just how it was done. "Queen Elizabeth" and "Catherine the Great" were not at all enthusiastic about it, but said that if "Henry the Eighth" would cross "The Bridge of San Luis Rey," they would have a "Permanent Wave" and try "The Art of Thinking."

Louis Bromfield sent word that in the "Early Autumn" "A Good Woman" had "Possession" of "The Green Bay Tree," so he would be pleased to attend, and would tell us about "The Strange Case of Miss Anna Spragg."

Our English authors added much to the gaiety. Galsworthy brought "The Silver Spoon" and "The White Monkey" and sang his "Swan Song." "The Rich
 (Continued on Page Twenty-four)

Shall we adopt this Federation Pledge?
CLUB MEMBER! PLEDGE YOUR-SELF TO THIS!

- Silence during program.
- Helpful thinking during business.
- Relaxation and fun during social hour.
- Cheerfulness in accepting, and conscientiousness in fulfilling responsibility.
- Loyalty to all members.
- Exertion in the interest of the club.

Phone: HO 5337
DON'T MISS YOUR PHONE CALLS
LET 24 HOUR
TAKA MESSAGE SERVICE
BE YOUR SECRETARY
 You Use Our Phone Number
 We Take Your Messages
WARNER BROS. THEATRE BLDG.
 Suite 202 \$3.00 per month

Cleaning and Weaving
Oriental Rugs and Carpets
has been our life study
Danelian Brothers
Hempstead 2988
 1731 N. Vine St.



**A Better
 Laundry
 Service**

TROY SERVICE is for those who appreciate the difference between the usual and the unusual.

Troy invites the privilege of rendering unusual laundry service to you.

**This is Troy's 40th
 year in business
 in Los Angeles**

TROY LAUNDRY

Telephones:

For Los Angeles, Hollywood, Beverly Hills and South Pasadena: **WEstmore 1311.** Westwood, Santa Monica Bay District: **61350.** Redondo **2598.**

W Washington 1864
Frida Schroeder
 CAKES
 3029 W. Seventh Street
 A Block East of Vermont—In Polly's Patio
 "Quintessence of Homemade Goodness"

Create an Impression
 That will remain with your guests by uniforming your maids in distinctive outfits—designed and made by an experienced firm.
K. M. Myers Corp., Ltd.
 Phone: TR 0484 1021 W. 7th St.

Established 1880
**PIONEER STEAM
 CARPET
 CLEANING WORKS**
 W. G. Cline, Pres.

 Telephone: TRinity 0143
 Fifty years experience Rug Cleaning, Repairing, etc., on the *Golden Rule* basis made it possible.

The Two Seas

(Continued from Page Seventeen)

walked and, in His majesty, spoke peace to the angry winds, hushing the surging waves to silence beneath His feet.

Anticipate what you will, you never can be disappointed in the Sea of Galilee. In the words of the Queen of Sheba the astonished traveler exclaims, "The half has not been told!" Nor does familiarity with its glorious and charming scenes lessen their effect, for, according to that immortal poet, "A thing of beauty is a joy forever." Whatever else may be forgotten in this crowded life of ours, such a vision of this glorious Sea will linger like an inspiration with him who has stood on its shore, until memory shall have lost its power, until his eyes shall have closed upon the finite to behold the Infinite.

In remote ages the Sea of Death was as beautiful as the Sea of Galilee; its scenery as charming. That was the time when the fated cities of the plains flourished in its vicinity till their crimes drew down from above the consuming fire and they were withered from off the face of the earth. When we consider that once the contrast between these two seas was almost imperceptible, the first thought that comes to the mind is, "Why such a contrast today?" It is a well-known fact that every inland lake must sooner or later become salty, bitter and poisonous if it has no outlet; and this is precisely the cause of the existing condition of the Sea of Death. Situated as it is, in such a low crater-like basin, fourteen hundred feet below the sea-level, it receives great volumes of water from every direction, giving nothing out except what is forced by evaporation. Thus it becomes still more bitter, salty and poisonous. It is even seven times more salty than the ocean, while the Sea of Galilee becomes sweeter and more beautiful as the countless ages sweep into fathomless eternity, for underlying its action is the fundamental law of the universe of God, "It is more blessed to give than to receive."

These two seas, so near and yet so unlike, represent two types of human life; the one governed by selfishness—the other, by love. How low must be the impulses of him who absorbs the resources of others to gratify his own selfish desires. If he were not living on such a low plane, fourteen hundred feet below the level of the Heart of Humanity, he surely would be conscious of that sacred power, so lofty and sublime, implanted in every human breast, which, if not perverted into selfishness, would fling outwardly upon society and even upon the brute world. As the Sea of Death receives great volumes of water and never becomes full, so is that nature that absorbs, always having a sufficiency but never enough. The time at last comes when there is not even a sufficiency and it is the means of its own destruction. As the Sea of Galilee pours out its sweet and sacred waters forever, and never becomes empty, so is the human soul made infinite in power to love and serve; the higher mortal ought to mourn that he has thus far lived having helped so few with this godlike thing—the lingering image of the Great Creator.

There is no value in education unless we can act out the wisdom of the school. There is no merit in culture if sleep and stupor can fill its place.

It cannot be that an era so powerful, a country so vast and marvelous as this, asks only for the common pursuits that bring us daily bread for the table or shelter from the storm. There must be something more than this, and today, more than ever, there is a flag of progress and service waving over every hill and tower. Happy are we if we can see this divine banner, if our ear can from the noises of this world separate the whisper that asks us to be soldiers of mankind. As such, in our highest form, we must be in ceaseless action, with an Americanism simple in creed but rich in activity; and, like the Americanism of Abraham Lincoln, let it all be incarnated in life; like the red in the rose, let Americanism be in us; let it be our color, our very form of being. We may find times for patience with radical theories of government, but let us be as impatient of their wrong application as a good musician is impatient with discord; and all of this will soon form into a river, the streams whereof will make more and more glad the whole of humanity and our God.

What Is Important?

(Continued from Page Seven)

The author has a duty toward the reader, but the reader has a duty not less important toward the writer. Walter B. Pitkin, professor in Journalism at Columbia University, says that one of the main causes of lack of grasp in reading is "weak vocabularies." Too many of us are satisfied with approximate meanings. He thinks that it is much more important to know all the meanings of each of fifteen thousand words than to know one meaning of each of fifty thousand words.


Professor Pitkin says that we should approach the printed page with the determination to grasp its meaning well enough to write a brief report for filing when we have finished the reading. These reports should be filed systematically so that they can be got at easily for frequent reference.

May we not use text books and literature as an approach to better speech? In doing this we shall find our better speech an approach to better literature.

Our final aim should be to improve our vocabularies to this end, that we shall improve our own thought and also our understanding of the thought of others.

American, European and Oriental Novelties

"A Thousand Gifts of Distinction"




5510 Wilshire Boulevard
6326 Hollywood Boulevard
6330 Hollywood Boulevard

Hollywood Blvd.
West of Vine

Wilshire Blvd.
West of La Brea

The Modern Woman..



...fully realizes the value of a specialized and competent advisory service designed to meet her particular needs...whether it concern an investment, the rental or purchase of a home, insurance, or the negotiation of a loan. You need not hesitate to come to this office with your business problem. We shall be happy to serve you.

3900 WILSHIRE BOULEVARD FITZROY 4111

WRIGHT & BECKER, REALTORS



Bresee Brothers
FUNERAL DIRECTORS
855 South Figueroa Street
Phone FAber 3125

Personal Interest

Please send information of personal interest to the Club Survey Chairman, Mrs. William Dellamore, 310 South Kingsley Drive, Telephone WASHINGTON 5725.

ENGAGEMENTS

BURT-HIXSON. Miss Claranita Burt, daughter of Mrs. Edgar H. Cline, to Mr. Robert MacDonald Hixson.

OATES-WILCOX. Miss Evangeline Oates to Mr. John Charles Wilcox, son of Mr. and Mrs. Oscar C. Wilcox.

MARRIAGES

FAYRAM-YERGE. Mr. Alonzo Fayram to Mrs. Rachel F. Yerge, daughter of Mrs. Walter Harrison Fisher. March 5, 1930.

HUDDLE-WILSON. Mr. Harry Coate Huddel, son of Mrs. Gertrude C. Huddel, to Miss Virginia Wilson, granddaughter of Mrs. George Lafayette Crenshaw. November 12, 1929.

SUTHERLAND-LATIMER. Mr. William Wilkins Sutherland, son of Mr. and Mrs. William M. Sutherland, to Miss Carol Nadine Latimer, daughter of Mr. and Mrs. Howard J. Latimer. February 12, 1930.

BIRTHS

ARMSTRONG. To Mr. and Mrs. John A. Armstrong, a daughter, Anna; born February 18, 1930. Daughter of Mr. and Mrs. John M. Buchanan.

HANNA. To Mr. and Mrs. John S. Hanna (Osee Hughes), a daughter, Patricia Anne; born February 17, 1930. Son of Mrs. Elizabeth M. Hanna.

LOCKE. To Mr. and Mrs. Edmund Locke, Jr. (Elizabeth Brown), a daughter, Helen Elizabeth; born February 17, 1930. Daughter of Mr. and Mrs. Chester Wallace Brown.

MCDONALD. To Mr. and Mrs. John Miller McDonald of Evanston, Illinois, a son, John Miller, Jr.; born January 5, 1930. Daughter of Mr. and Mrs. Walter A. Merrill.

SMITH. To Mr. and Mrs. Ossie M. Smith (Marcella Blood), a daughter, Marcella Jeanne; born February 19, 1930. Daughter of Mr. and Mrs. O. M. Blood.

YOUNG. To Mr. and Mrs. Lyndol L. Young (Mildred Wellborn), a daughter, Nancy; born February 5, 1930. Daughter of Judge and Mrs. Charles Wellborn; son of Mr. and Mrs. Milton K. Young.

Mrs. Ruth Bryan Owen is quoted as saying, "The confines of the home have so expanded that they now include not merely one's own city or state or even one's own country, but the world itself."

The Club Calendar

TUESDAY, APRIL 1

Better American Speech
Fine Arts Room; 10:30 A.M.
Rest Cottage Meeting
Department Room; 11:00 A.M.
Poetry
Poets' Corner; 12:00 noon
LUNCHEON

WEDNESDAY, APRIL 2

Drama
Auditorium; 10:30 A.M.
PRESIDENT'S LUNCHEON
Solarium Tea; 2:00 P.M.

THURSDAY, APRIL 3

Spanish
Department Room; 9:00 A.M.

FRIDAY, APRIL 4

Practical Relief
Department Room; 9:00 A.M.
French
Solarium; 9:30 A.M.

MONDAY, APRIL 7

Regular Monday Meeting
Auditorium; 2:00 P.M.
Applied Design
Department Room; 10:30 A.M.
Browning
Fine Arts Room; 10:30 A.M.
LUNCHEON

TUESDAY, APRIL 8

Shakespeare
Department Room; 10:30 A.M.

WEDNESDAY, APRIL 9

Public Affairs
Fine Arts Room; 10:30 A.M.
LUNCHEON
Solarium Tea; 2:00 P.M.
Ebell Juniors' Regular Meeting
Fine Arts Room; 2:30 P.M.

THURSDAY, APRIL 10

Spanish
Department Room; 9:00 A.M.

FRIDAY, APRIL 11

Practical Relief
Department Room; 9:00 A.M.
French
Solarium; 9:30 A.M.
Book Chamber
Fine Arts Room; 10:30 A.M.

MONDAY, APRIL 14

Regular Monday Meeting
Auditorium; 2:00 P.M.
Parliamentary Law
Department Room; 10:30 A.M.
Psychology
Fine Arts Room; 10:30 A.M.
LUNCHEON

TUESDAY, APRIL 15

Bible Literature
Fine Arts Room; 10:30 A.M.

WEDNESDAY, APRIL 16

Art and Travel
Fine Arts Room; 10:30 A.M.
LUNCHEON
Solarium Tea; 2:00 P.M.

THURSDAY, APRIL 17

Spanish
Department Room; 9:00 A.M.
Drama Workshop
Fine Arts Room; 2:00 P.M.

FRIDAY, APRIL 18

Practical Relief
Department Room; 9:00 A.M.
French
Solarium; 9:30 A.M.
Book Chamber Luncheon
Dining Room; 12:00 noon

MONDAY, APRIL 21

Regular Monday Meeting
Auditorium; 2:00 P.M.
Applied Design
Department Room; 10:30 A.M.
Browning
Fine Arts Room; 10:30 A.M.
LUNCHEON

TUESDAY, APRIL 22

Law
Fine Arts Room; 10:30 A.M.
Lives and Times
Fine Arts Room; 2:00 P.M.

WEDNESDAY, APRIL 23

Music
Fine Arts Room; 10:00 A.M.
LUNCHEON
Solarium Tea; 2:00 P.M.
Benefit Dinner Dance
Dining Room; 7:30 P.M.

THURSDAY, APRIL 24

Spanish
Department Room; 9:00 A.M.

FRIDAY, APRIL 25

Practical Relief
Department Room; 9:00 A.M.
French
Solarium; 9:30 A.M.

SATURDAY, APRIL 26

Ebell Juniors' Benefit Bridge Tea
Dining Room; 2:00 P.M.

MONDAY, APRIL 28

Regular Monday Meeting
Auditorium; 2:00 P.M.
Parliamentary Law
Department Room; 10:30 A.M.
Psychology
Fine Arts Room; 10:30 A.M.
LUNCHEON

WEDNESDAY, APRIL 30

Solarium Tea; 2:00 P.M.

Westlake School for Girls
Accredited College Preparation and Lower School. Courses in Music, Art, Home Economics, Swimming pool and all out-of-door sports.
HOLMBY COLLEGE
Leads to 3rd year in Universities. Fully accredited. Fredrica De Laguna and Jessica S. Vance, Directors, 700 North Faring Road.

Private Tutoring
Teachers selected by experts for each individual student. All high, college, and grade school subjects. Tutors sent to homes or hotels if desired.
Macurda-Drisko Schools
1609 West Ninth Street
DUNKIRK 1416

For Advertising
Space In
EBELL
Call VAndike 7736
or TUCKER 4145



Has Individually Designed

•••

Silvia Sherman
"Chateau La Martine"
627 So. Normandie

•••

Telephone: EXposition 1121

Miss Fulmer's School
Member of Ebell
Children's Dept. — Kindergarten through ninth. Boarding and Day. Experienced teachers for all grades.
Automobile Service
KINDERGARTEN PRIMARY EDUCATION for Young Women.
College Entrance Requirements.
Telephone: DUNKIRK 4974
627 S. St. Andrews Pl.

HOLLYWOOD STORAGE COMPANY



When the modern matron moves she does so in the Modern Manner. She phones the Hollywood Storage Co., Granite 1161 and turns her moving problems over to this modern organization knowing she will receive truly Superior Service. :- :-

•••

HOLLYWOOD STORAGE COMPANY
CONVENIENTLY LOCATED
1025 No. HIGHLAND...GRanite 1161

APPLICATIONS for Membership

It is the duty of any member of Ebell who knows a good and sufficient reason why the following applicants should not be admitted to membership in the club to notify the chairman of the membership committee at once.

REGULAR MEMBERS

- Babcock, Mrs. Ernest S.**, 411 South Kingsley Drive; Washington 6621.
Endorsed by Mrs. William C. Fritz, Mrs. R. H. Blumle, Mrs. Arthur H. Shivers.
- Bennett, Mrs. Jennie E.**, 545 South Alexandria Ave.; Washington 0854.
Endorsed by Mrs. Warren Cash Watkins, Mrs. E. H. Frazier, Mrs. James E. Geever.
- Gaines, Mrs. Hoyett Howard**, 6236½ Orange Street; Wyoming 4545.
Endorsed by Mrs. Francis Moulton, Mrs. H. S. Cheney, Mrs. Guy L. Huyett.
- Jarvis, Mrs. Charles E.**, 1823½ South Wilton Place; Rochester 926S.
Endorsed by Mrs. Elizabeth J. Esken, Mrs. J. Lester Adams, Mrs. Gertrude Ross.
- Stockman, Mrs. David T.**, 1170 South Norton Avenue; Empire 4611.
Endorsed by Mrs. G. N. Spencer, Mrs. Stanley Miller, Mrs. Laura P. Joyce.

JUNIOR MEMBERS

- French, Miss Margaret**, 2131 Third Avenue; Empire 3386.
Endorsed by Dr. Mary Greene Korstad, Mrs. Dell A. Schweitzer, Mrs. W. H. French.
- Tuttle, Miss Martha M.**, 1525 San Vicente Boulevard, Santa Monica. Santa Monica 25-344.
Endorsed by Mrs. Frank Howell Stanbery, Mrs. George Harris Cook, Mrs. William Scott Humbert.

IN MEMORIAM

- MRS. FRED BETTS
MRS. WILLIAM BASSETT CORWIN
MRS. LENA LEONARD FISHER
MRS. GEORGE A. LEPPER
MISS ALICE K. PARSONS
MRS. ALONZO C. POTTER

FLOWERS BY
PIERRE
IN THE WILSHIRE TOWER
5516 WILSHIRE BOULEVARD

Wyoming 2194

HEART DISEASES

You should know about

NEW
MEDICAL
BOOK

The eminent heart specialist, Dr. Robt. Wm. Langley, tells what you should know about your heart in simple, non-professional language. You will find encouragement and aid in caring for and preventing heart disease. Discuss—Blood Pressure—Heart Failure—Palpitation—Care—Rest—Diet—Heart Murmurs—Athletics—Drug Effects, etc. Cloth bound. Illustrated. Postpaid \$2.00.



WETZEL PUBLISHING CO.
336 So. Broadway, Los Angeles, Calif.

A BOOKISH PARTY

(Continued from Page Twenty-one)

Young Man" and "Hans Frost" devoted themselves to Charlotte Cameron, who had just returned from "Wanderings in South-eastern Seas." William J. Locke, "The Beloved Vagabond," was quite chummy with Warwick Deeping, who told us that "Old Pybus" was now living with "Sorrell and Son" in "Roper's Row." Michael Arlen brought "Lily Christine," who wore "The Green Hat," but they were not so much sought after as "The Six Mrs. Greenes."

Charlie Merz came with "The Great American Band Wagon" and made so much noise that Roy Chapman Andrews was heard to say he wished they were at "The Ends of the Earth." Borcovici didn't object to the noise at all, but said it reminded him of some of his "Nights Abroad." Just about this time Richard Halliburton, in his breezy way, offered to tell us all about "Grandmother Brown's One Hundred Years" but "Disraeli" told him he was afraid time would not permit, he might have to stop in "Midstream," which would be disastrous. Richard was quite peeved, and looked about for "New Worlds to Conquer."

Joseph Lincoln brought "Galusha the Magnificent" and "Cap'n Dan's Daughter," who made a charming contrast to the "Whiteoaks of Jalna."

Edith Wharton, who had "A Son at the Front," brought "The Children" and gave us "Glimpses of the Moon" from "The House of Mirth."

Bess Streeter Aldrich came with "A Lantern in Her Hand," looking for "A Lost Lady."

Katherine Mayo seemed very anxious that "Mother India" should not meet Dhan Gopal Mukerji, who was urging everyone to "Visit India with Me."

Paul de Kruif brought his "Microbe Hunters" who found Reymonts' "Peasants" a satisfactory field for their efforts.

The "Giants in the North" soon put down the "Revolt in the Desert" and went "Vagabonding Down the Andes" with Harry Franck.

Remarque, now that it was "All Quiet on the Western Front," persuaded Arnold Zueig, who had just disposed of "The Case of Sergeant Grischka," to join him and M. J. Tomlinson in a toast to "All Our Yesterdays."

"Benjamin Franklin," "Daniel Webster" and "Theodore Roosevelt" had discussion about the follies of "Our Times."

At the very last minute, Manuel Kemloff came, wearing his "Coronet" and bringing with him the Countess of Warwick, who discoursed most pleasantly on "Life's Ebb and Flow."

Our refreshments were in charge of "Mamba's Daughters," who served most acceptably.

The crowning touch was given to our party when the Bartletts, the last to leave, said to us, as only they can say it: "Adios."

—MRS. O. P. LOCKHART.

Don't Throw Them Away!
Bring Your Hosiery for
Repairing to
KNIT A RUN COMPANY

Two Stores
1841 So. Western Wilshire at La Brea

Telephone
VAndike 7736

for
Advertising Rates in
Ebell Magazine

Have them Cleaned the Wilshire Way
WILSHIRE
RUG CLEANING WORKS
2115 BEVERLY BLVD.
Drexel 6662
CARPET WORK OF EVERY DESCRIPTION

LLOYD'S DETECTIVE SERVICE

Trained Operatives

Mr. Lloyd is an Investigator with
30 Years' Experience in Municipal,
Federal and Private Service

355 So. BROADWAY

VANDIKE 7448

Night: YOrk 7359

Larchmont Beauty Salon

246 No. Larchmont Blvd.
GRanite 3052

Permanent Waving
Special attention
shown grey hair

Alfonce, recently from Berlin and Paris, will cut and shape coiffures in the latest mode.



Our Permanent Wave

Competent Operators in All Dept's

Rodney Benson

DECORATIVE FURNISHER

1436 North Foothill Blvd.

at Washington St.

Pasadena

Sterling 9077



MEDITATION

... This life-size statue in Carrara marble—an original by Emilio Viaschi, one of Italy's most distinguished sculptors—is included in the fine collection of art at Forest Lawn. The gates of this famous memorial-park are open daily from eight a. m. to five-thirty p. m.

FOREST LAWN MEMORIAL-PARK
GLENDALE AVENUE AND SAN FERNANDO ROAD - GLENDALE

Telephones: Los Angeles: Albany 1121 - - - Glendale: Douglas 8661

CLOSE TO THE HEART OF LOS ANGELES

FROM
EBELL
743 So. Lucerne
Los Angeles, Cal.
Return Postage
Guaranteed

Sec. 435½, P. L. & R.
U. S. POSTAGE
PAID
Los Angeles, Calif.
Permit 1874

RUMOR VS. FACT

*The
Truth
About
Funeral
Prices*

Because of our unequalled facilities, Pierce Brothers has gained an unjustified reputation for high prices. Figures for the past three years prove conclusively that nowhere in the city is it possible to obtain a fitting burial for less. Almost 40% of our business has been in funerals costing less than \$200, of which more than half cost less than \$100.

Write for "Before Sorrow Comes."



ADVISORS & DIRECTORS

720 W WASHINGTON ST.
PHONE WESTMORE 4156

A Service Built to the Ideals of Particular People

*Three Plants Devoted to Complete
Automotive Service*

1725 So. HOPE—Auto Laundry, Polishing, Lubrication.
1801 So. HOPE—Buick Authorized Service.
1823 So. HOPE—Reconstruction of Damaged Bodies and
Fenders, Top Recovers, Seat Covers,
and Duco Refinishing.

*A Department for Every Need of Your Car at a
Reasonable Cost*

Joseph Kreutzer Corp.

PHONE: WESTMORE 6461

Current Exhibit of Suits Gowns Furs Millinery



*Comprises those rare productions of
Collins Art in Dress, distinguished
in taste and correct in Line.*



*The House of Collins has established the
Correct Line of the individual figure as
the criterion of art in Dress.*



*Equally true of every phase of the cos-
tume, Collins Furs glorify and Collins
Millinery crowns the Dress.*



Harry Collins
ART IN DRESS

PARK VIEW AT SEVENTH