

The Ebell Insider

we're so glad you're here!

Hello, and welcome to the second issue of our member newsletter!

As you know, we've welcomed several new members to our Board of Directors for three-year terms that began in July, and some of them are now chairs or vice-chairs of Board committees. I'm excited about them all, and about all our committees, and I hope you will be too.



NEW EBELL BOARD MEMBERS AND ROLES

New to the Board this term are Kay Balue, Linda Myerson Dean, Kathryn Edwards, Carol Impara, Gail Orum, and Jill Scheetz. Kay and Linda are both longtime Ebell members who have served on the Board before. (Some of you will remember that Kay is a past President of The Ebell). Kay will lead the Rest Cottage Association this term, while Linda will chair the Advancement Committee. Kathryn, Carol, Gail, and Jill will chair Audit & Risk Management, Scholarship, Membership (vice-chair), and Historic Collections, respectively.

CONTINUING EBELL BOARD MEMBERS AND ROLES

Members continuing their terms on the Board include J. Lee Braly (VP of Finance and Finance Committee chair), Rosa Bravo (Membership chair), Beverley Clarkson (Programs chair), Catherine Collins (VP), Lauralee Gooch (Governance chair), Janna Bodek Harris (Secretary), Camille Lombardo, Gerrie Maloof (Programs vice-chair), Christy McAvoy (House, Theatre, & Grounds chair), Nellie Scott, Clare Sebenius (Communications chair), Fran Varga (Ebell Friends chair), and Fazie Yakub (Treasurer).

LEARN MORE ABOUT EBELL COMMITTEES

Most committees are open to all Ebell members in good standing, either as voting or advisory members; a few, like Finance and the Executive Committee, accept only members currently holding specific Board positions. If your skills and interests make you a good fit for any of the committees I've mentioned, please contact the chair (they're all listed in our Member Directory on the website) or email Meredyth Deighton, Director of Membership & Programming, at meredyth@ebellofla.org.

Remember, The Ebell needs YOU!!

Yours truly,

Randi Jones
President, The Ebell of Los Angeles

2024–2025 Impact Report: A Year of Community, Creativity, and Connection

We are proud to unveil The Ebell of Los Angeles' 2024–2025 Impact Report—a celebration of the extraordinary ways our community came together this past year. As members of the Impact Evaluation Taskforce, we had the privilege of reviewing the data, stories, and milestones that reflect the scope of our collective work, and we are excited to share the results with you.

Amplifying Women's Voices. This year, The Ebell brought to life 341 unique happenings—programs, gatherings, and service opportunities that animated every corner of our historic campus. Among them were 116 original public events and 44 co-produced public events, with 80% dedicated to amplifying women's voices, creativity, and leadership. From intimate author talks to major concerts and civic forums, these experiences engaged more than 27,000 people and affirmed The Ebell's place as a vibrant hub for arts, culture, and connection in Los Angeles.

Welcoming Community. In all, The Ebell opened its doors to over 100,000 people—neighbors, students, artists, theatergoers, patrons, and members—who found inspiration and belonging here. Student participation surged by 62%, with thousands of young people engaging through matinees, internships, and acting classes.

Engaging Members. What inspires us most, though, is the heartbeat of our membership. This year, 110 member gatherings brought us together to learn, celebrate, and connect. Members contributed an extraordinary 23,000 hours of service across 30 committees and subcommittees, ensuring The Ebell's legacy continues to thrive.

This report is, ultimately, about you—our members and supporters—whose generosity, leadership, and involvement make everything possible. Thank you for being part of this story. We invite you to explore the full report and take pride in what we've accomplished together.



PROGRAMS

Fall Program Highlights

BEVERLEY CLARKSON

Be inspired by powerhouse women changing the world – from groundbreaking entrepreneurs to influential artists who will leave you energized and ready to take on anything.

Immerse yourself in unforgettable performances showcasing incredible artists and their latest masterpieces. These experiences will have you talking for months to come.

Celebrate together as we honor our cherished Ebell traditions, creating new memories and energy while honoring the legacy that makes our community special.

Mark your calendars, invite your friends, and get ready to be part of something truly special. We can't wait to see you there!

- 10/4/25: Salsa Dancing (continuing series)
- 10/6/25: Distinguished Voices Luncheon: Opening Day w/Jessie Kornberg from the Skirball Cultural Center
- 10/9/25: Distinguished Voices Coffee Talk: The Flow World discussing Period Poverty
- 10/11/25: Salsa Dancing (continuing series)
- 10/12/25: LA VOICES: LA Jewish Symphony
- 10/13/25: Concert: Contadoras y Compositoras- An Afternoon of Latin-American Art Song & Arias
- 10/18/25: Pre-Code Film Series: Kim Luperi presents an overview of pre-Code cinema and highlights some of the key actresses of the era
- 10/27/25: Charter Day: Heads Up!
- 11/1/25: Line Dancing Class (series begins)
- 11/3/25: Gentle Jazz Class (series begins)
- 11/10/25 Distinguished Voices Luncheon: Nellie Scott, Executive Director of the Corita Art Center and Ebell Board member
- 11/12/25: Cup & Saucer
- 11/16/25: Distinguished Voices Coffee Talk: Holocaust Museum LA

Ebell Members Support Friends in Deed's Women's Room

BARBARA BRUNER

The Social Service Subcommittee of the Rest Cottage Association (RCA) works to advance The Ebell's legacy of supporting women in need through hands-on volunteerism and thoughtful philanthropic partnerships. One such ongoing partnership is with Friends in Deed, a Pasadena-based nonprofit doing vital work for individuals who are unhoused or at risk of losing their housing.

Among its programs is The Women's Room, a unique daytime refuge created specifically for women who are experiencing homelessness or housing insecurity. While it may sound like a simple space, The Women's Room is much more than that—it serves as a sanctuary where women can find safety, dignity,

and community. Guests can enjoy breakfast or lunch, shower, wash clothes, use computers, and access a wide range of social services. Recently, the program has added a small library and a quiet room, offering a peaceful place to rest. Opportunities are also available for creative and healing activities such as painting, flower arranging, and poetry writing.

Ebell members Nancy Meade and Barbara Bruner have been preparing and delivering breakfast once a month to guests at The Women's Room for nearly two years. The connection between volunteers and recipients is heartfelt and human—women supporting other women in a spirit of compassion and equality. As Barbara reflects, "There is something about providing healthy nourishment to others that feeds one's own soul."



If you live in or near Pasadena and would like to get involved, contact Barbara Bruner at babruner@earthlink.net. She would love to talk with you about how you can help.

Supporting the Future of Los Angeles

CAROL IMPARA

For over a century, the Ebell/Flint Scholarship Program has helped outstanding Los Angeles undergraduate students in financial need achieve their academic potential. Launched in 1919 with the modest sum of \$1,005.50 to fund seven high school girls, the program has grown, providing a transformative impact over several generations through the awarding of nearly 4,200 grants totaling more than \$10.4 million. This enduring commitment exemplifies the fulfillment of The Ebell's mission of uplifting women through education by extending this support to the community at large.

The program's historical evolution— from the inclusion of male recipients in 1927 to its current robust oversight and administration—demonstrates a deep dedication to fairness and excellence. The Ebell Scholarship Committee meticulously reviews applications, conducts in-person interviews, and ensures that recipients meet rigorous academic standards. A scholarship recipient must maintain full-time enrollment with a 3.25 GPA while being both a permanent resident of, and attending a college or university within, Los Angeles County. Scholars at 4-year institutions receive \$5,000 each year, and scholars at 2-year institutions receive \$3,000.

For this academic year (2025–26), the Ebell proudly supports 53 scholars across 16 Los Angeles County colleges, including three community colleges and thirteen four-year institutions. These students represent a vibrant cross-section of Los Angeles, encompassing 39 majors, with 19 seniors, 24 juniors, and 10 sophomores.



This year's Scholars' Award Dinner was held on September 11, 2025, in The Ebell of Los Angeles' Dining Room. Thirty-seven scholars, along with their guests, were welcomed by the Scholarship Committee and Ebell members. Two alumni speakers, Ryan Capaci and Rosalyn Phan, recounted their amazing careers thanks to the Ebell Scholarship!

Our next event, the **Scholarship Breakfast on February 21**, is a great opportunity for Ebell members to meet our scholars. All are invited to attend!

NOMINATING

Seeking Ebell Nominating Committee & Future Board Member Candidates

Open Nomination Period - Now through December 31, 2025

This year, the Nominating Committee will present to the Board for review and approval a slate of four candidates to serve on the Nominating Committee, replacing the four members whose terms are ending. Because new Board seats were created and filled in the last two years, there are no open Board positions this year.

Nominating Committee Purpose

The Nominating Committee is a committee of The Ebell of Los Angeles established to assist the Board of Directors in fulfilling its fiduciary duties to appoint and cultivate the best qualified candidates for the Board of Directors and for the next Nominating Committee. It also serves to develop a leadership pipeline for future Ebell Board members.

Requirements for Nominating Committee Candidates

The Nominating Committee consists of nine members of The Ebell who shall have been members in good standing for at least two (2) years by June 30 of the year in which they are elected or appointed to serve. It is anticipated that most Nominating Committee members will have experience working on one or more Ebell committees prior to their nomination. Our Nominating Committee members are selected from our membership based on their ability to make meaningful contributions to the stewardship of The Ebell.

Seeking Board Member Candidates for Future Pipeline

While there are no Board openings this year, the Nominating Committee is looking for names of potential Board members to add to our pipeline for cultivation and consideration in the future. The ideal Board member will be a collaborative problem-solver who can think broadly and strategically about the mission of the organization and its future needs. The candidate will have nonprofit and/or professional experience, be adept at making complex decisions, and be comfortable with fundraising and working with staff leadership and other Board members.

Self-Nominate or Nominate Someone Else

We welcome members to self-nominate and/or nominate someone they know. This is your opportunity to help shape the future of The Ebell. Before submitting a nomination, please speak to the prospective nominee to confirm the nominee's interest in pursuing the position.

[CLICK HERE FOR NOMINATING FORM](#)

Continued from previous page

General Expectations of Nominating Committee Members

For the organization to fully benefit from the strength of our Nominating Committee members, we expect the committee members to exhibit and apply the following capabilities:

1. **Meeting Attendance:** Attend, prepare for, and participate in regular (and special) committee meetings.
2. **Membership Commitment:** Contribute to the support of the organization by maintaining an active paid (regular or lifetime) Ebell membership.
3. **Professional Experience and Contacts:** Use personal and professional contacts to benefit the organization.
4. **Learning and Outreach:** Learn about the organization and recruit and welcome members, guests, and visitors to The Ebell.
5. **Board Recruitment:** Participate in cultivating potential candidates for leadership roles at The Ebell.
6. **People Skills:** Be comfortable speaking with members and potential candidates about The Ebell and leadership roles.
7. **Judgment and Fairness:** Evaluate nominees in a consistent manner, applying the screening and interview tools used by the Nominating Committee; balance the skills and diversity of continuing board members with potential candidates to provide the talents and leadership needed for the organization's future.
8. **Decision Making:** Possess independent judgment combined with the ability to consider different perspectives and compromise if necessary.
9. **Team Player:** Demonstrate the ability to collaborate, compromise, and work toward solutions in a congenial and respectful way.
10. **Ebell Experience and Understanding:** Show past involvement with at least one Ebell committee or task force, as well as understanding of and enthusiasm for the Board's long-term vision for The Ebell and its future.
11. **Technological Skills:** Be able to handle electronic documents.

Please feel free to contact any of us with questions. Nominatingcommittee@ebellofla.org.

We appreciate your contribution to this important effort and look forward to receiving your nominations. (Note: Members will need to be logged in to access the form.)

2025–2026 Nominating Committee:

Laurie Schechter, Nominating Committee Chair
Phyllis Currie, Nominating Committee Vice Chair
Emma Welch, Nominating Committee Secretary
Catherine Collins, Board VP/ Liaison
Jill Bauman

Cheryl Finley
Erica Liepmann
Caroline Moser
Donna Russell
Arden Teplow

[CLICK HERE FOR NOMINATING FORM](#)

From Hollywood to Uganda

An Interview with Dinah Perez

LAURIE SCHECHTER

I had the opportunity to catch up with member Dinah Perez about her career and volunteer efforts. I hope you enjoy learning about the impact she's making near and far.

Tell us a little bit about your personal journey and connection to Los Angeles.



I have lived in Los Angeles for most of my life. I came when my parents divorced and my mother, who was disabled, decided to depart New York for Los Angeles where she had a sister.

You have been recognized as a leading entertainment attorney, designated by Thomson Reuters as a “Super Lawyer” for five of the last six years. Can you tell us more about your career and legal practice?

I graduated from Loyola Law School and have been in the practice of entertainment law for over two decades. I focus on film, music, television, new media, and publishing, helping creators and companies alike. My clients include recording artists and producers,

composers, and songwriters; TV and motion picture writers, producers, directors, and actors; talent agencies; and social media influencers and personalities.

I understand your professional success extends beyond the law and all the way to Uganda. Please tell us more.

Three years ago, while gorilla trekking in Uganda, I was inspired to help provide opportunities for African children to get an education. Over the last three years, I have been able to contribute and raise funds to send 16 of the 50 Mutanda Island children to boarding school; the remainder receive island English language education. Children in the island school aged out at the end of the first grade, so it was likely that these children were going to end up illiterate like their parents and without opportunities for a better life. Now, I see these children with ear-to-ear smiles and a hope for a life that they never thought possible.

How does your work in Uganda align with The Ebell’s mission and vision?

From the very beginning, The Ebell was a place where women could converge in ways that were not possible in society, a place of education, art, community, and empowerment. My mission in Uganda is about opening the eyes of the children and showing them what is possible in the world. Like The Ebell, it is about service, education, and empowerment. I am honored to be part of the Ebell legacy and have access to its inspiring programming that continues to this day – only blocks from my home!

Destroy_Rebuild LA #23

AWARD-WINNING PHOTOGRAPH BY KAREN NUMME

Ebell member Karen Numme's photographic collage *Destroy_Rebuild LA #23* won First Place in the "Rebirth and Renewal" exhibition juried by Ellen Friedlander & Nancy A. Scherl for L.A. Photo Curator. The work evokes the aftermath of the devastating Los Angeles fires earlier in 2025, capturing a fractured urban landscape where firefighters, utility poles, scattered mailboxes, and disembodied wires loom over fleeing individuals in scenes tinged with grainy washes of yellow and red.

Numme uses this piece to explore both loss and resilience. The jurors noted that while *Destroy_Rebuild LA #23* forces viewers into uncomfortable memories, it also asserts that rebuilding—of neighborhoods, of lives—is never completed in mere physical form. Through its layered structure, the photograph becomes a meditation on destruction, community endurance, and the ongoing process of renewal.

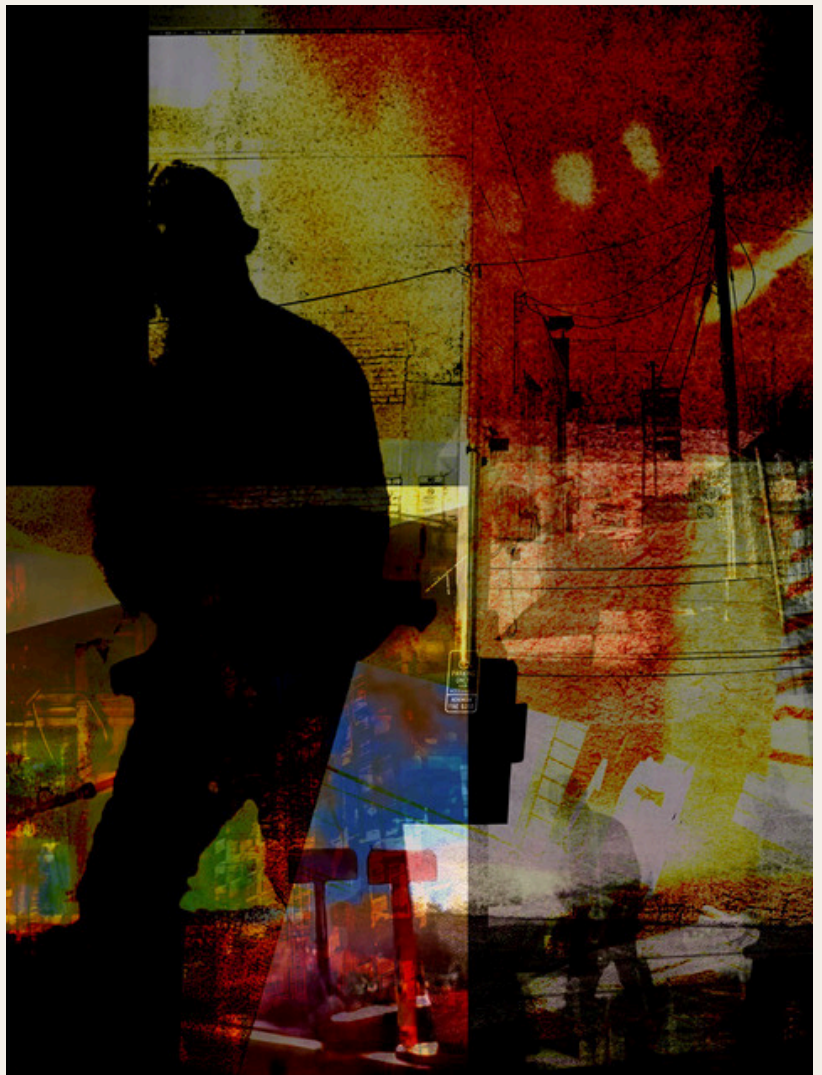
On the series, Numme said that she sought to "...evoke a sense of urgency, resilience, and the shared responsibility." She also describes how a close friend's loss in the Altadena fires—losing home, business records, and belongings—prompted her to document the catastrophe as both witness and tribute to those rebuilding their lives.

Destroy_Rebuild LA #23 also won Honorable Mention at the International Photography Awards (IPA) 2025 Photography Competition.

Your Art, Your Story

Have a poem, short story, photo, or painting you'd love to share? We welcome member submissions to be featured in future issues of our quarterly! Showcase your voice and vision with our community.

[LET'S CHAT!](#)



A New Ebell Initiative

The renaissance of the Civics Committee at The Ebell is afoot. Our founders and members have a long history of being deeply committed to Civics education. With the focus on the role of government featuring prominently in the news and in our lives, the Civics Committee, a subcommittee of Programs, will provide access to education and promote civic engagement by advancing the understanding of the rule of law. It is our hope to help our members and our community make their own informed decisions.

We look forward to bringing you informative content.

Interested in getting involved? Contact Rosa Bravo (310) 880-5130 or Gerrie Maloof (310) 922-8800.

We the People *of the United States, in Order to form a more perfect Union, establish Justice, insure domestic Tranquility, provide for the common defense, promote the general Welfare, and secure the Blessings of Liberty to ourselves and our Posterity, do ordain and establish this Constitution for the United States of America.*

- The Preamble to the U.S. Constitution, 1787

Important Fall Dates:

Sep 17 – Constitution Day
Happy 249th Birthday to our
Constitution!
[Learn More](#)

Oct 24 – United Nations Day
Celebrating 80 Years!
[Learn More](#)

Nov 4 – Election Day
Rock the Vote!
[Register to Vote](#)



Our Congratulations

We are delighted to announce the marriage of Emma Jude Harris, daughter of Ebell board member **Janna Bodek Harris** and her husband Jim, to Adam Lenson. The couple, both theatre directors in London, were married in a small service in London in 2024. They enjoyed an intimate gathering with family and friends last month in Los Angeles at the bride's parents' home.

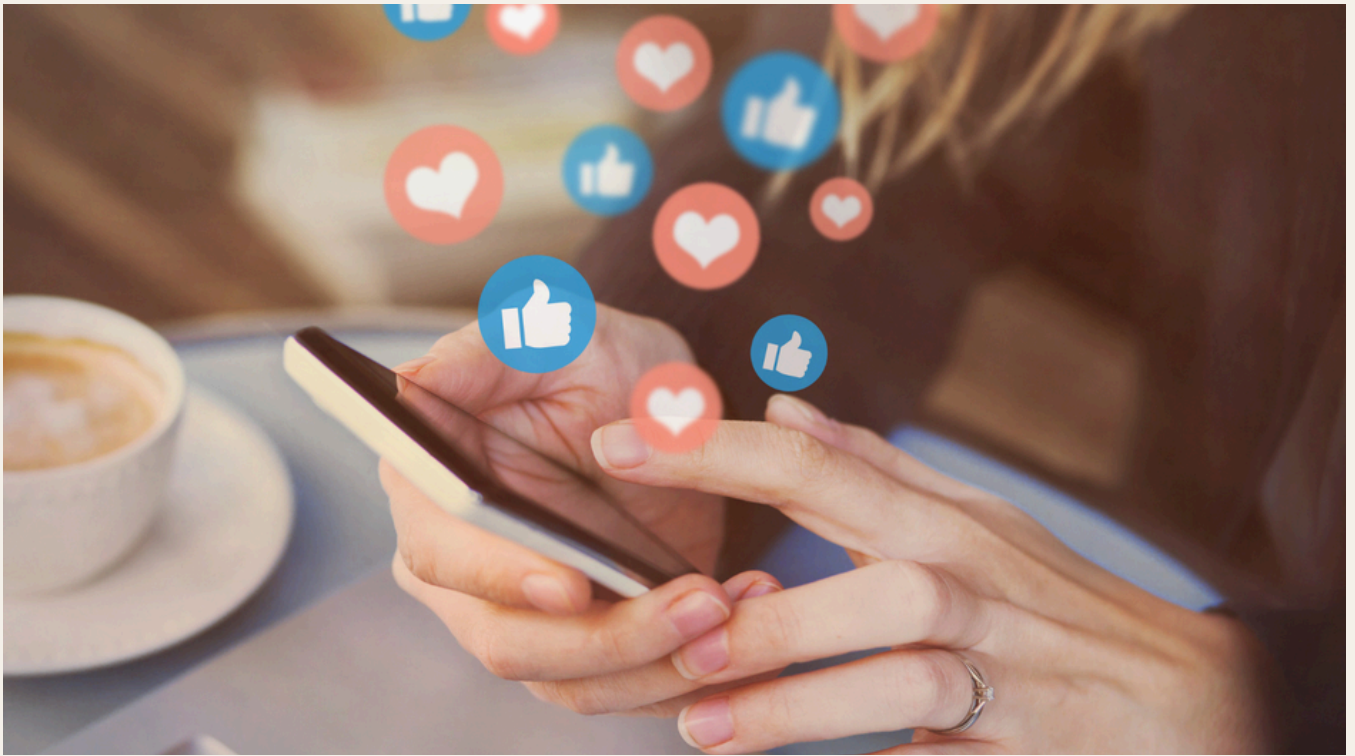


Our Condolences

Bernard Mathis Malloy, M.D. (Barney), father of Ebell member **Elizabeth Malloy**, passed away at home in Washington, D.C. on August 1, 2025. Dr. Malloy worked for the Central Intelligence Agency as a Staff Psychiatrist for 31 years, ultimately serving as Chief of the Psychiatric Division where, among other things, he was tasked with creating psychiatric studies of foreign leaders. A Certified Geriatric Care Manager with her own practice, Elizabeth expertly and lovingly managed her father's care from afar, while also helping Los Angeles seniors and their families, including a group of caregivers at The Ebell.



If you have news (births, deaths, weddings, anniversaries, etc.) that you'd like to share with other members in our next quarterly newsletter, please send your information to newsletter@ebellofla.org.



Your Space for Member-to-Member Connection

JOIN THE CONVERSATION, SHARE YOUR UPDATES, AND STAY IN
THE LOOP WITH OUR MEMBER FACEBOOK PAGE

Want to see what's happening right now in our community? Looking for a space to connect, share, and support each other in real time? Our Members' Facebook Group is the place to be!

This private group is where members:

- Share photos from events
- Ask questions or advice
- Post opportunities or collaborations
- Make announcements and promote their projects
- And just check in with one another between meetings

While our eblasts and newsletters keep you informed on the big-picture happenings, the Member Facebook Page brings the day-to-day moments to life. It's a casual, interactive space where members can connect, and share.

Let's bring our amazing community to life online, too. Join the conversation today!

[CONNECT HERE](#)



Caught on Camera

2025 BARBEQUE



Caught on Camera

LA OPERA WESTSIDE STORY

