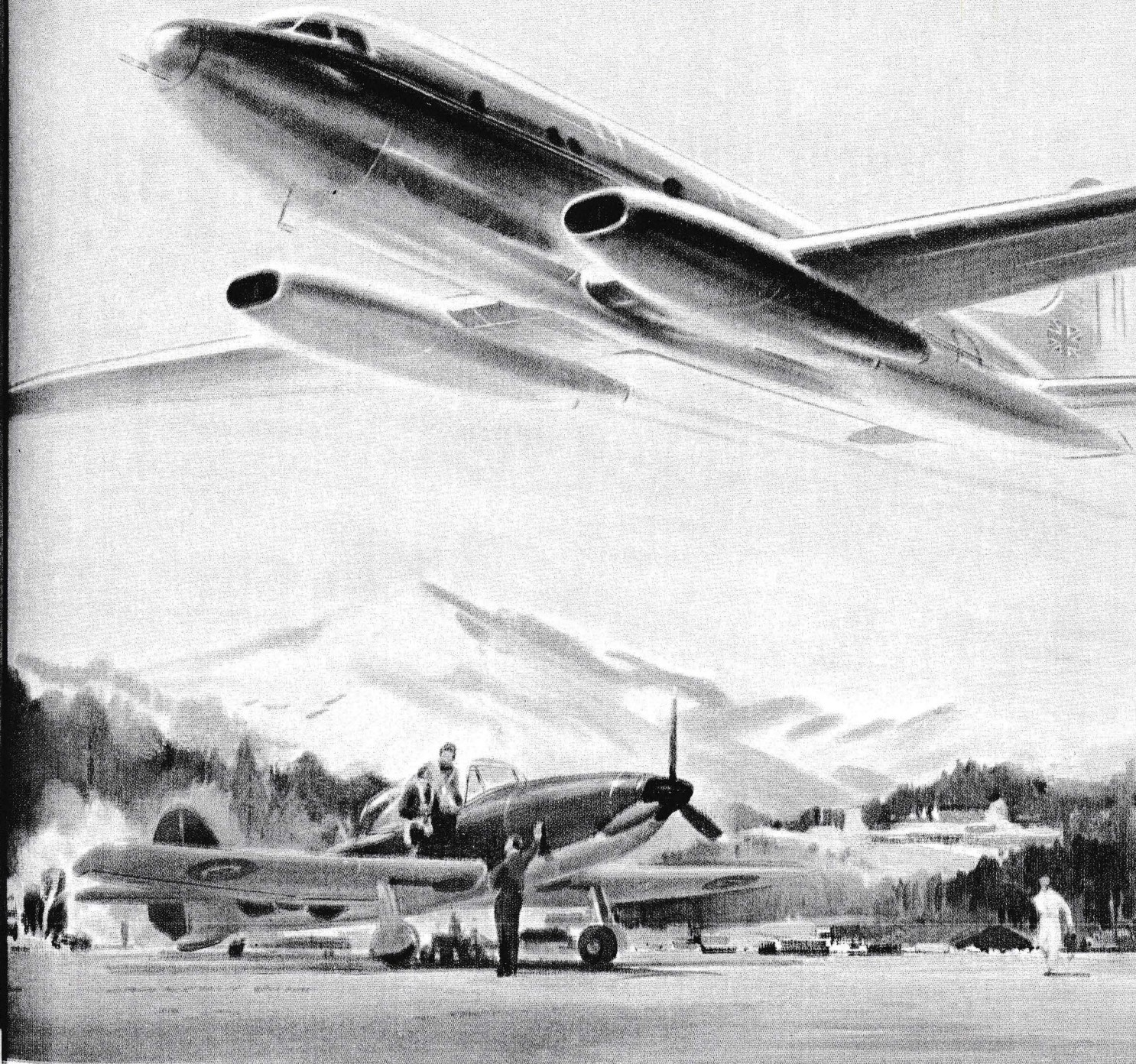




IN THE FOREFRONT OF PROGRESS



Jet Transports ??? Some of these questions can be answered now—in theory—but soon the Avro Tudor 8 flying at upwards of 25,000 ft. with 4 Nene engines will give Avro vital *practical* answers to the problems which must be solved before high-altitude air-conditioned travel at Jet speed becomes the rule. And in the field of trainers where the name of Avro has always held pride of place, the latest successor to the '504', the 'Tutor' and the 'Anson' is the new Avro 'Athena' powered by a gas-turbine propeller engine—the Armstrong Siddeley 'Mamba'.



Avro

A. V. ROE & CO., LIMITED • MANCHESTER • ENGLAND

(Branch of Hawker Siddeley Aircraft Co. Ltd.)

71

LAND

AVIATION

physiologi-
500 m.p.h.
metallurgi-
ratures in

apparatus
s. It means
actors. It
bearing
300,000 lb.
down con-
Africa and
n Laws in
as import-
port drive
be accom-
the work
to fruition
forward
assured.

ring along
zon I for
medium-
es for the
Marathon
, the Vick-
routes and
S.R.45 for
newer and
off. These,
illustrated
n together
wer them.

otten

ter field. A
g made of
quirements
a national
there may
sh industry
D.H. Moth
ying with-
anada has
fine little

nd realize
ature pros-
they lay in
nd still do
ze too that
cient aero-
ada, as in
and New
a further
ity of free
elong but
ic and col-

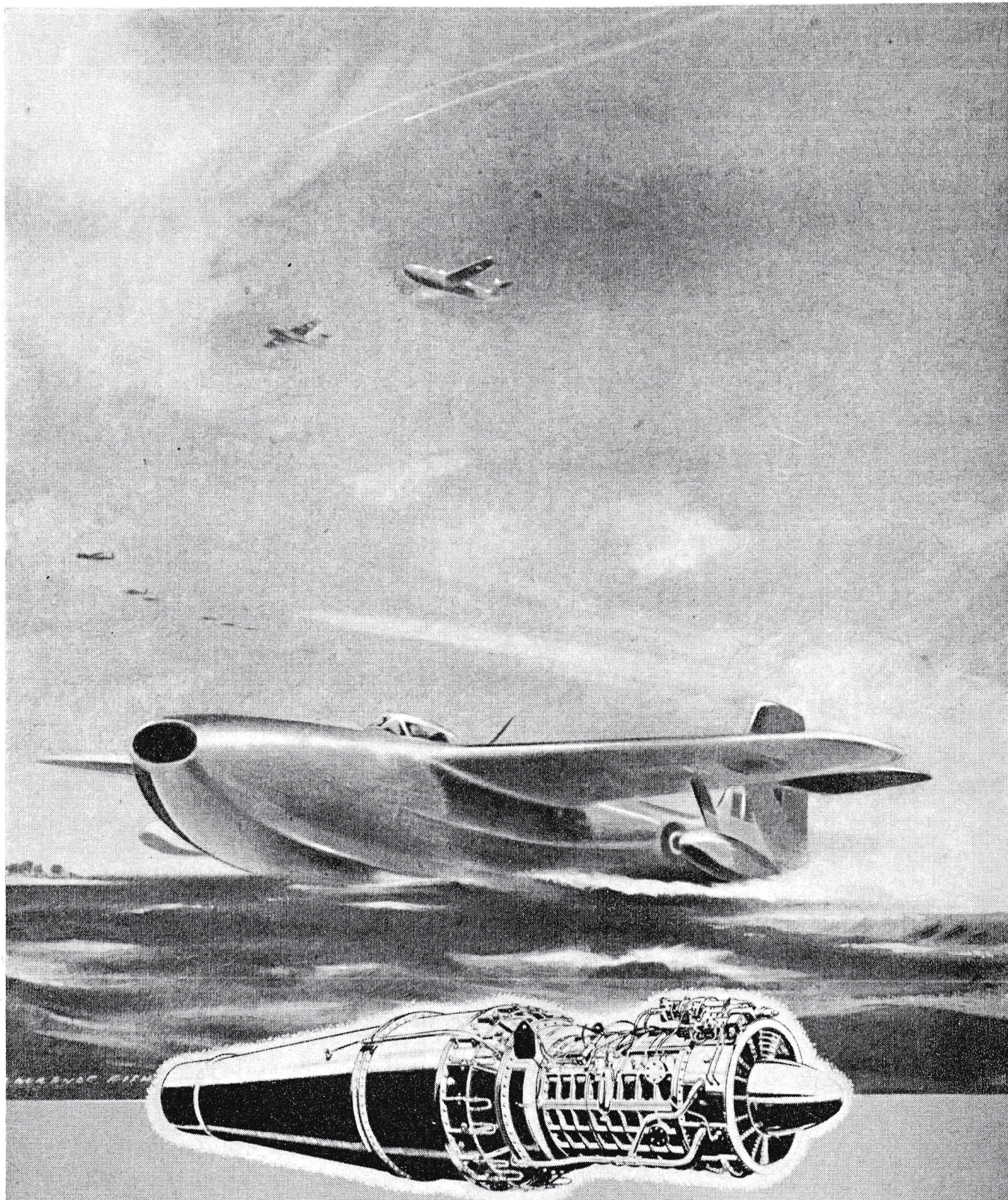
faces the
ifold tasks
ont it but
e needs of
equipment
ar. In pre-
tion issue
a stage in
tributes a
t remains



HAWKER SIDDELEY GROUP

Leaders in the British Aircraft Industry

A. V. ROE & CO. LTD. HAWKER SIDDELEY GROUP LTD. HAWKER SIDDELEY MOTORS LTD. AIR SERVICE TRAINING LTD.



SAUNDERS-ROE

The SR/A1 Fighter Flying Boat, powered by two Metrovick Axial Flow Jet Units

METROPOLITAN-VICKERS

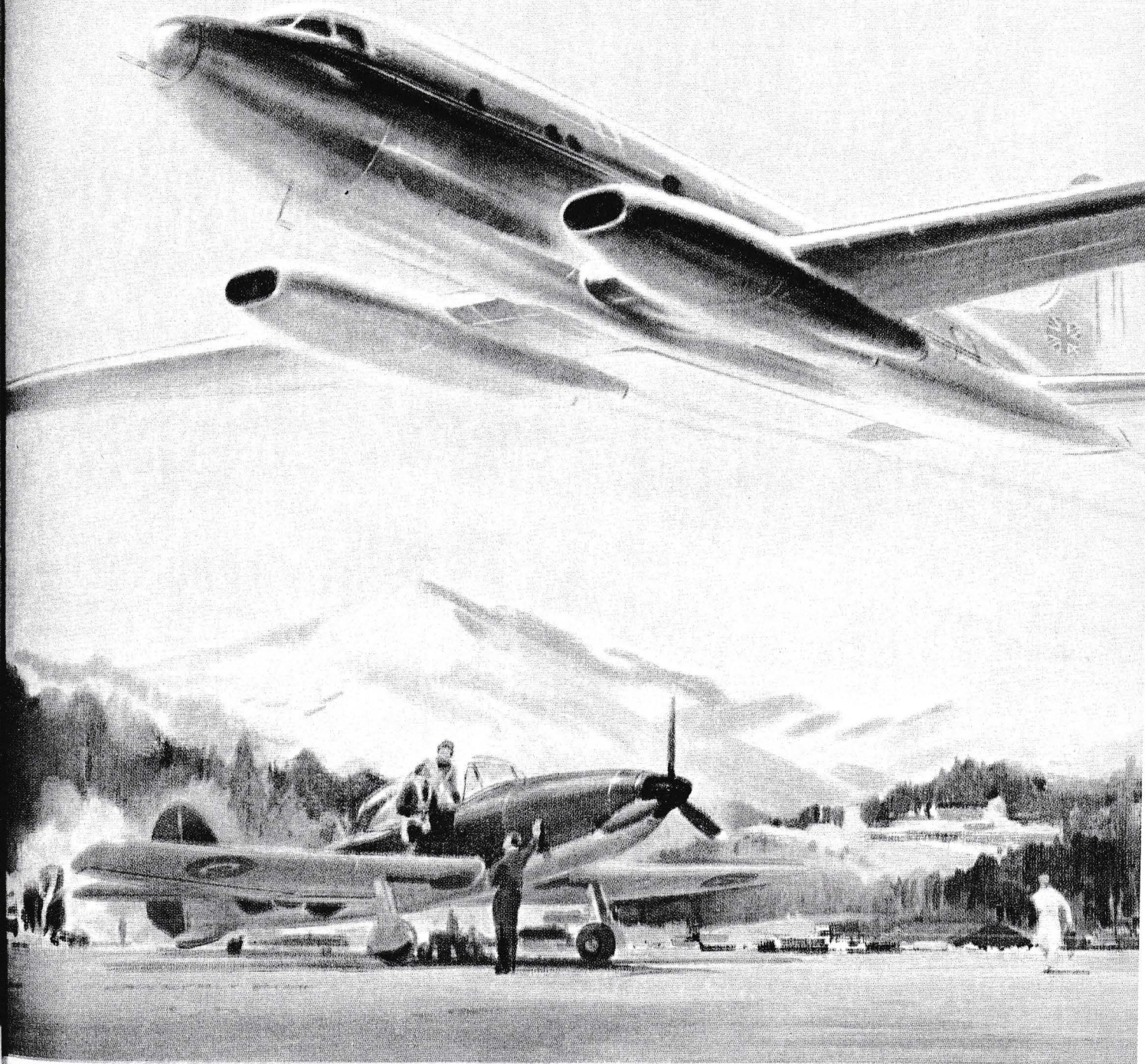
ELECTRICAL COMPANY LIMITED

SAUNDERS-ROE, LTD., 45, PARLIAMENT STREET, LONDON, S.W.1, ENGLAND
METROPOLITAN-VICKERS ELECTRICAL CO., LTD., TRAFFORD PARK, MANCHESTER, 17, ENGLAND

CANADIAN AVIATION June 1947



IN THE FOREFRONT OF PROGRESS



Jet Transports ??? Some of these questions can be answered now—in theory—but soon the Avro Tudor 8 flying at upwards of 25,000 ft. with 4 Nene engines will give Avro vital *practical* answers to the problems which must be solved before high-altitude air-conditioned travel at Jet speed becomes the rule. And in the field of trainers where the name of Avro has always held pride of place, the latest successor to the '504', the 'Tutor' and the 'Anson' is the new Avro 'Athena' powered by a gas-turbine propeller engine—the Armstrong Siddeley 'Mamba'.



Avro

A. V. ROE & CO., LIMITED • MANCHESTER • ENGLAND

(Branch of Hawker Siddeley Aircraft Co. Ltd.)

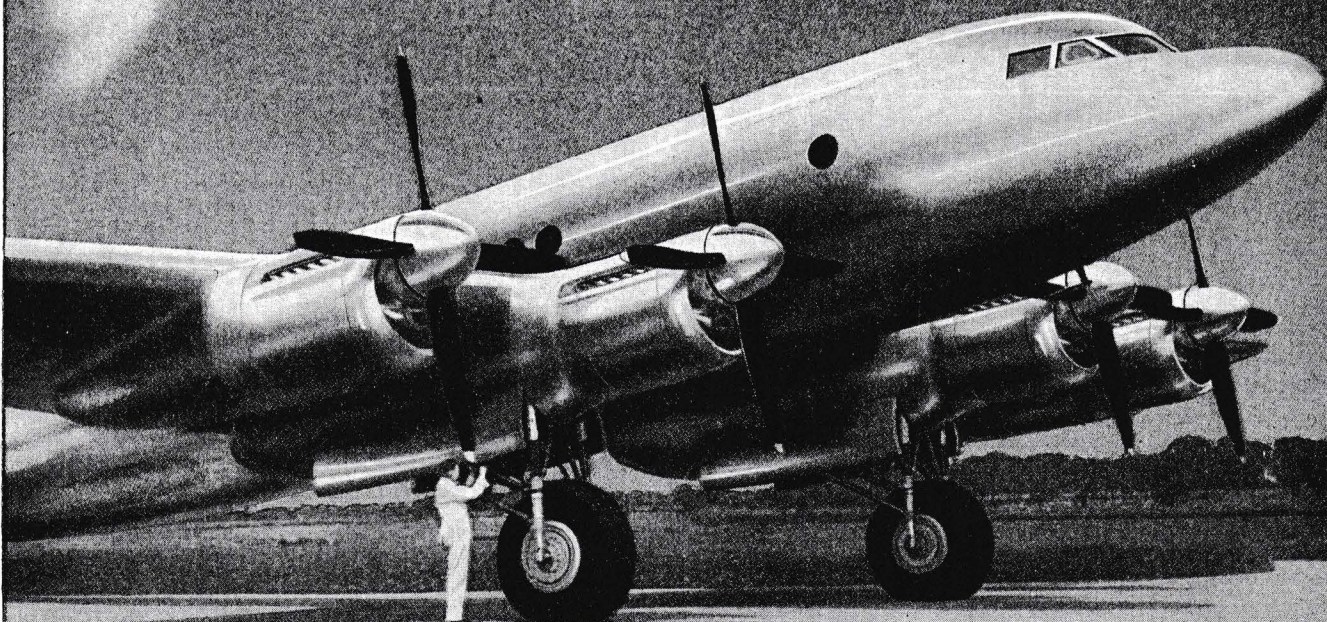
CANADIAN AVIATION JUNE 1947

AVRO LEADS THE WAY!



The Tudor I has behind it unparalleled experience—gained in the design and production of the world's most powerful bomber, the Lancaster; in the design and production of Britain's largest wartime Transport aircraft, the York; and in the design and production of the fastest Mail Carrier in regular long-distance operation to-day, the Lancastrian.

THE NEW AVRO TUDOR I



A. V. ROE & CO., LIMITED, MANCHESTER, ENGLAND

(Branch of Hawker Siddeley Aircraft Co., Ltd.)