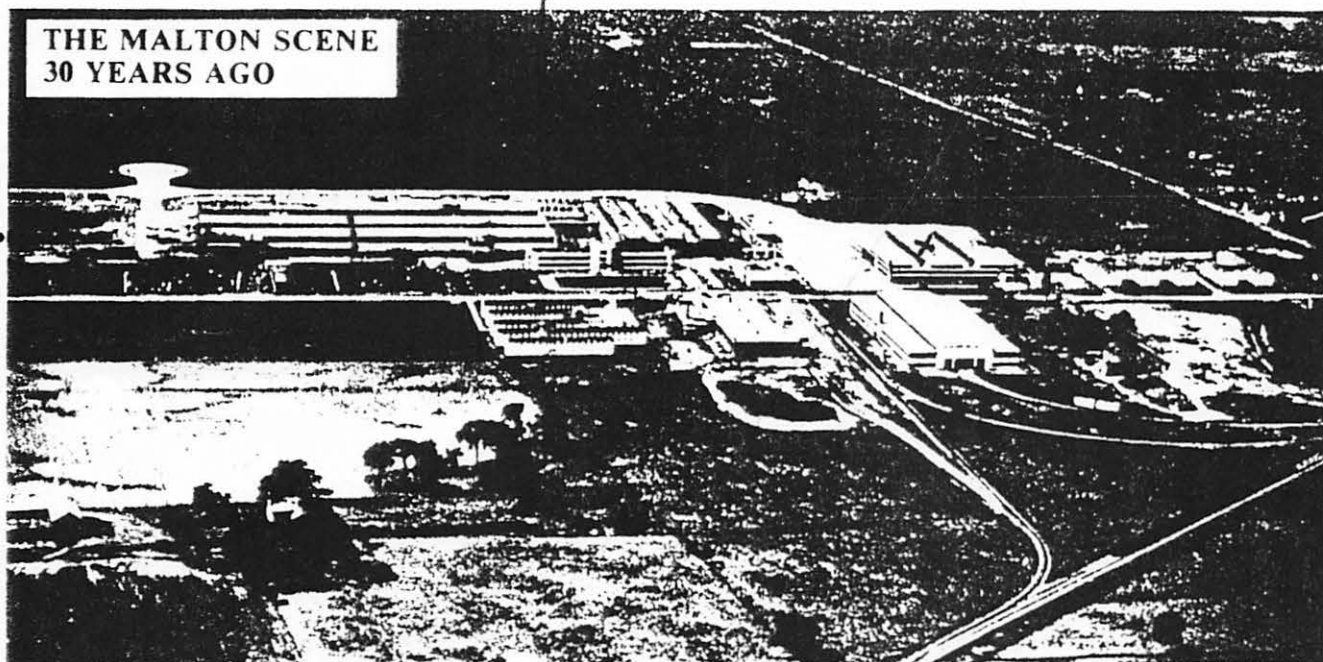


3 BAY LENGTH
1940
ORIGINAL
PLANT
1938

DETAILS BLDG
DROP HAMMER SHOP
OFFICE BLDG
1942

X ASSOCIATED
AIRCRAFT

THE MALTON SCENE
30 YEARS AGO



3 BAYS
1940

ORIGINAL
PLANT
1938

For a glimpse of the past, and as a tribute to the many old-timers still in the Company, we publish this aerial view of the Victory Aircraft plant, taken early in 1945. It is the oldest photo of the Malton area in our files, and should stir many memories.

Until World War 2 began, Malton had been a small cluster of houses and a general store at a country cross-roads, far from Toronto. By 1945, it was a hive of wartime industry. The main product was the Avro Lancaster bomber, which was

force presented many problems. A special train of 8 to 10 coaches left downtown Toronto each morning, bringing city residents. The train waited on a plant siding during the day and returned them at night. Other employees made their way from distant points, as far away as Hamilton. With gasoline strictly rationed and tires in short supply, employees joined car pools or rented buses for the long trip over dirt and gravel roads to reach the plant. Extended working hours and overtime were a way of life.

CHARLIE GILCHRIST was Foreman of the Progress Group in the Details Building, and kept a myriad of small parts moving from Machine Shop to assembly.

DOUG MCGUIRE had completed his part in the massive tooling program for Canadian production of the Lancaster—a huge aircraft in those days.

ALEX HUTCHINSON was doing maintenance and rigging work with shovels, crow-bars, rollers and lots of muscle. Fork-lift trucks and front-end loaders were rare.

LEGEND HAS IT THAT LEIGH CAPEROL LANDED A LYSANDRE ON THE ROOF TURNED & TOOK OFF !!

BAYS WERE 100' WIDE FOR SHORT STERLING PRODUCTION BECAUSE ITS WING SPAN WAS 98' !!

ASSOCIATED AIRCRAFT ORIGINALLY BUILT FOR HANDLEY PAGE HAMPDEN & AVRO ANSON. TAKEN OVER BY VICTORY AIRCRAFT TO ACCOMMODATE LANCASTER FINAL ASSY BECAUSE LANCASTER 103' WING SPREAD !

A VRO CANADIAN AIRCRAFT