

HAVING NAVIGATION PROBLEMS?



Now
Learn radio navigation
in only 45 minutes,
the convenient, fast, easy way...
on Hi-Fi, L.P. recordings!



"ON COURSE, ON THE GLIDE PATH" is a high fidelity, L-P record that takes you along an actual ground controlled radar approach to the L.A. International Airport.

Relax in your easy chair and learn without effort proper usage of ground, tower and approach control.

Learn all the radio aids to navigation quickly and effortlessly with this sensational album. Included with each album is an illustrated detailed brochure which explains marker beacons, V.H.F. omnidirectional radio ranges, and all other necessary navigational aids.

"INSTRUMENT FLIGHT" is a high-fidelity L-P record that takes you on an actual IFR flight from Los Angeles to San Francisco.

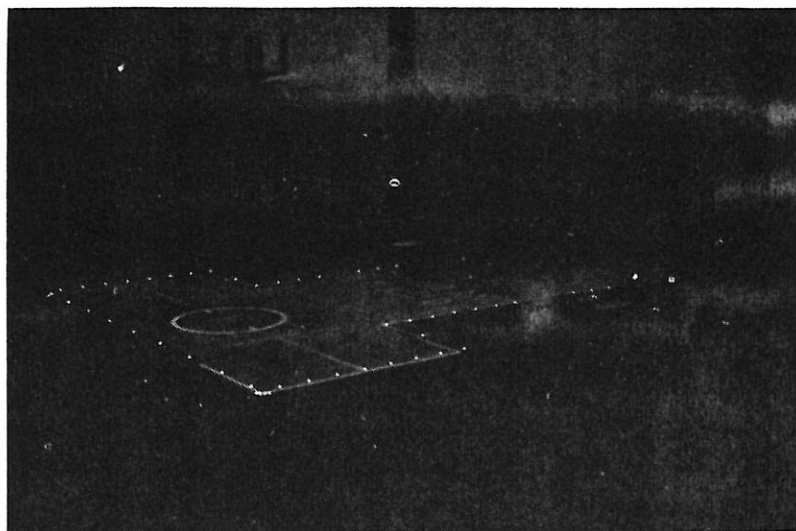
Experience actual pre-flight weather briefing, flight planning and filing. Hear complete enroute communications.

Included with each album is an illustrated detailed brochure which pictures flight plans, logs and computations. Actual photographs of various omni and ADF needle displacements for enroute situations.

A complete set of Jeppesen instrument charts are also included.

**DEALERS and DISTRIBUTORS INQUIRIES
INVITED.**

AERO-PROGRESS, INC.,		DEPT. T-30
10493 Santa Monica Blvd.,		
Los Angeles 25, Calif.		
Please find enclosed \$_____ for the following:		
-----INSTRUMENT FLIGHT at \$8.98 ea.		
-----ON COURSE, ON THE GLIDE PATH \$5.98 ea.		
Name _____		
Address _____		
City _____	State _____	
Please enclose 25c to cover postage and handling. California residents add 4% sales tax.		



HELIPORT LIT FOR NIGHT FLYING: Battersea Heliport, London, which was developed by Westland Aircraft Ltd., has been granted a licence for night flying. Lighting consists of medium-intensity elevated perimeter lights and floodlights mounted on towers to make the platform stand out against its surroundings. Pilots also receive assistance from an angle of approach indicator.

central heating system including sewerage and water services, fuel oil storage, electrical services and other related work. Completion date is September 30.

TCA/BOAC Agreement

More than 450 tons of air freight capacity will be offered across the North Atlantic this summer by TCA and BOAC. The two airlines, which recently completed a commercial agreement for trans-Atlantic passenger travel, will also co-ordinate activities in the field of air freight.

Air freight destined across the Atlantic between Canada and the United Kingdom/Europe will be moved by either airline, using the fastest, most convenient TCA or BOAC flight available. Shipments onward bound from the U.K. to Europe, will travel BOAC or BEA from London to their destinations.

Together, the two airlines will provide more than 900,000 lbs. of cargo capacity to international shippers, consignees, agents and forwarders on both continents.

Wheeler Takes Over S. Prov.

Southern Provincial Airlines, Toronto Island Airport, which has been operated by Canadian Aircraft Renters Ltd., has recently become associated with Wheeler Airlines Ltd. of Montreal.

Under the new arrangement, F. H. (Tom) Wheeler becomes head of the

company with James M. Lavery, Montreal, serving as secretary-treasurer. They have become members of the board of directors together with continuing members Joseph Ryan and Howard Ross, both of Toronto. Terrence Coghlan, formerly of Wheeler Airlines, has been named manager of the Toronto operation.

Weight & Balance

The DoT says that commercial operators may now use the following figures for computing passenger weights. Adult male 165 lbs.; adult female 143 lbs.; children 3-11 years inclusive 77 lbs.; infants 22 lbs.

BOAC to Toronto

BOAC introduced its new London-Montreal-Toronto service March 1 with a Comet 4 flight. In use on the service will be Comet 4's and Britannias until April 18 when the Corporation will introduce Boeing 707's.

Initially, the 707 service will be once weekly, but will be increased to five times weekly beginning June 13. A month later it will be stepped up again to a once-per-day service. Though the Comet 4's will not be used after the advent of the 707's, Britannias will continue to see service on the route.

Avro Aircraft Services

Inauguration of the new Avro Aircraft Services Div. presents commercial operators with an up-to-date, experienced facility for aircraft turna-

round servicing, maintenance and modification operations.

Located on company property adjoining Toronto's Malton Airport, the hangars of Avro Aircraft Services are large modern structures amply supplied with power, heat and light. Both buildings are fully fire protected by sprinkler systems, a 24-hour fire guard service, and by the company fire brigade located in an adjacent building.

Members of the staff have recently completed training to qualify them for the servicing of Bristol Britannia and Boeing 707 aircraft, and participation in other courses is planned.

Spartan in the West

The management of Spartan Air Services Ltd. has announced that in the interests of economy and to utilize existing technical facilities, the Fixed Wing Division of the Spartan organization will be moved to the Winnipeg plant of Bristol Aero-Industries Ltd. Spartan is now controlled by the Bristol Aeroplane Co. of Canada Ltd.

The Fixed Wing Div. operates Anson V's, Mosquito 35's, DC-3's, Norsemen and Cessna 310's. The Winnipeg plant specializes in airframe repair, overhaul and maintenance. It is considered that use of these facilities will serve to streamline the Fixed Wing operation.

TCA Cuts Freight Rates

TCA has reduced air freight rates between Canada and Britain/Europe by as much as 68%. The decrease will be effective April 1.

The tariff reductions, roughly between 25% and 68%, apply to a number of specific commodities, including leather

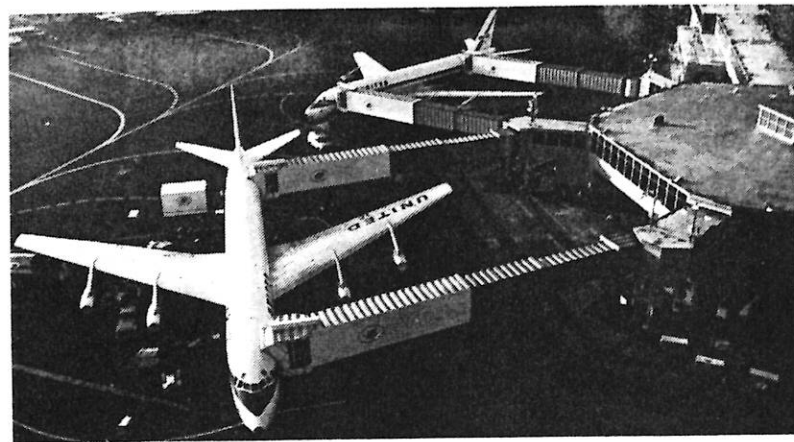
and leather goods; cloth and textiles, other than clothing; automobile and agricultural machinery parts; pottery, chinaware, crystal and glassware; radio and TV parts; household appliances and scientific, precision, surgical and dental instruments.

Specific commodities, such as automobile and agricultural machinery parts, will be shipped by air from Montreal to the U.K. for as little as 32 cents a pound.

DoT Spending

The 1960-61 Estimates for the Department of Transport contain an amount of \$52 million for airport construction, an \$11 million cut. It now is estimated that \$47 million will have been spent in the fiscal year which ends March 31, instead of \$63 million appropriated.

Other DoT estimates for the new



JETWAY CORRIDORS: Two United Air Lines DC-8 jet mainliners are shown at San Francisco International Airport ready to load passengers through "Jetways". The unique corridors extend from 52 feet to 107 feet, swing smoothly into place on wheels. Units raise and lower electro-mechanically and can be extended to an aircraft's doorway in less than 60 seconds.

fiscal year include \$12 million for radio aids to navigation; \$510,000 for grants to flying clubs, commercial schools, instructors and student pilots.

More F-27's for Canada

PWA's negotiations to purchase from three to five Fairchild F-27 turbo-prop airliners have reached the final stages. The acquisition of the 40-passenger turboprops will be PWA's initial step in re-equipping its fleet with turbine-powered aircraft.

Almost at the same time as the announcement from Fairchild of the PWA deal, came word that Quebecair has decided to purchase at least one more F-27 in 1960, and is considering the ordering of another six over the period of the next two years.

IATA Fare Dispute

North Atlantic airlines propose to continue their present passenger fares, including surcharges for jet service, until the end of April. This is a stop-gap measure taken while they negotiate a new fares pattern to take effect on May 1.

CPA Cuts a Fare

CPA will introduce the lowest fare ever charged by Canadian carriers between Vancouver and New York. The \$10 fare decrease is part of a drive to encourage Canadian west coast passengers flying to New York to use a Canadian airline.

CPA's new tourist class fare from Vancouver to New York will be slightly lower than the lowest fare now in



FU-24 AGRICULTURAL AIRCRAFT FOR NEW ZEALAND: Fletcher Aviation Corp., of El Monte, Florida, has announced shipment of three more FU-24 agricultural utility aircraft to New Zealand. Shipped in pre-fabricated kits, the aircraft can be assembled by local labor using simple hand tools. Over 60 of the unique FU-24's are in use in New Zealand today.