

People

Aro Equipment Corp., Bryan, Ohio, has named **R. B. Blythe** assistant to the vice-president and **D. W. Orrick** sales manager of aircraft products.

* * *

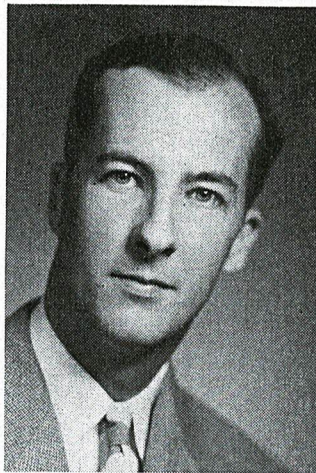
J. B. Ridley, vice-president of A. E. Ames & Co., has been named a director of Atlas Steels Ltd., Welland, Ont.

* * *

New executive of the Ottawa branch of the Canadian Aeronautical Institute: **J. L. Orr**, president; **G. C. D. M. Holman**, vice-president; **A. Jaworski**, secretary; **R. B. Ferris**, treasurer; **T. E. Stephenson**, councillor.

* * *

A **James C. Floyd**, vice-president, engineering, Avro Aircraft Ltd., Malton, Ont., only Canadian winner of the U. S. Wright Medal, has been honored with a Fellowship by the Royal Aeronautical Society of Great Britain.



D. D. McLean has been named manager, sales department in the Canadian Westinghouse Co.'s Electronics Division, Hamilton, Ont. He was engaged in electronics work in the Canadian Navy, National Research Council and Trans-Canada Air Lines prior to joining Westinghouse in 1951.

Data Processing Associates Ltd., Ottawa, announces the election of **George Glinski**, Dipl. Eng., (electronics editor of Canadian Aviation) as director and president and **Douglas Peacock** as managing director and vice-president. Both were senior executives of Computing Devices of Canada Ltd., of which Mr. Glinski was a co-founder. He is regarded as one of the leading engineers in digital and analog computation in Canada.

* * *

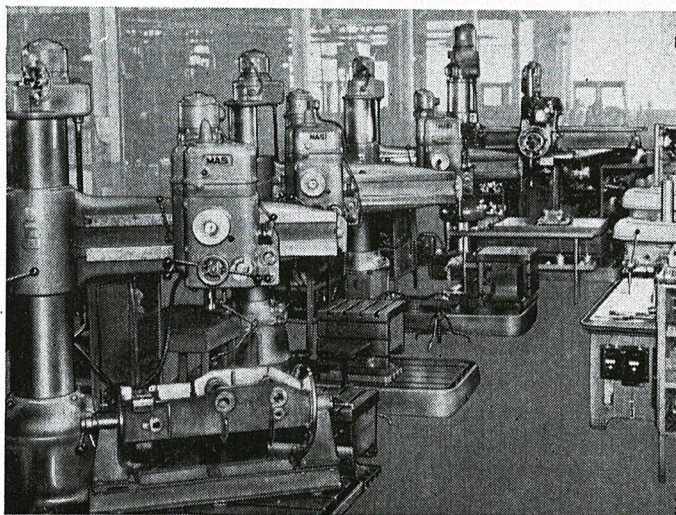
Automotive & Aircraft Parts Manufacturers' Association (Canada) has named **O. D. Cowan**, vice-president and **D. M. Park**, hon. treasurer.

* * *

G. Lawton Johnson has been elected to the board of directors of Greer Hydraulics, Inc., Jamaica, N.Y.

* * *

MacDonald Bros. Aircraft Ltd., Winnipeg, a member of the Canadian Bristol Aeroplane group, has appointed **R. H. May** sales manager. He has been with Bristol since 1936.



ARE *Peak Loads* YOUR PROBLEM ?

Manufacturers from many unrelated industries rely on a BATA contract to relieve the internal PEAK LOADS when EXTRA PRODUCTION is NEEDED IN PRECISION MACHINING.

Often this will result in less complicated production — and less costly —
than the internal strains incurred by a manufacturer in gearing up
to meet these TEMPORARY INCREASED SCHEDULES.

WHEN YOU MUST PRODUCE — LET A BATA SUB-CONTRACT HELP YOU

BATA ENGINEERING —

DIVISION OF BATA SHOE CO. OF CAN. LTD.

Phone
Frankford 99

— BATAWA, ONT.