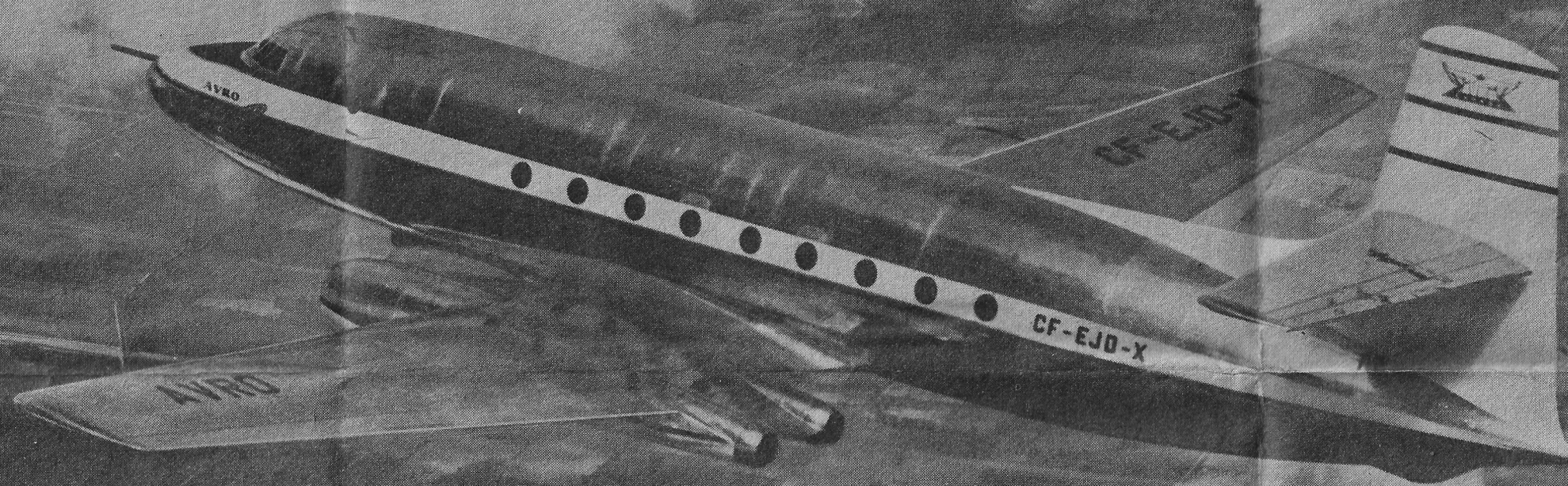


CANADIANS FIRST IN NORTH AMERICA WITH:

50-PASSENGER JETLINERS

MEMBERS of I.A.M. Lodges 717 and 1922 at Toronto, Canada, are particularly proud of the job they have done in helping out A. V. Roe Canada Ltd. put into production the first jet passenger airliner on the North American continent, William Boothroyd, I.A.M. representative, writes *THE MACHINIST*. The big 50-passenger plane is powered with four turbine engines and cruises well over 400 miles an hour. Passengers ride in luxurious comfort in air conditioned, pressurized cabins. "Our new ship, we believe, is the answer to improved air travel and we are mighty proud to have played an important part in its development," he explains. "Contributions in all phases of development and production were made by I.A.M. members. I.A.M. Lodge 717 is the bargaining agent for production employees in the factory and I.A.M. Lodge 1922 for technical and salaried employees." Boothroyd listed some of the outstanding features of AVRO's Jetliner including the safety of the four jet engines packaged into two nacelles, one in each wing, which enables an engine failure to be handled with less effort and hazard than with the conventional four-engine nacelle type. While the ship is designed to carry 50 persons in comfort, it can easily be modified to carry 60 persons, or 40. The air conditioning and pressurization units are integrated into a completely automatic system to supply fresh air to passengers at comfortable temperature and pressure under all flight conditions. A stewardess position at aft end of cabin is complete with an instrument panel controlling temperature, oxygen flow, lights, telephone and other factors necessary to passenger comfort. The engines, Rolls-Royce Derwent 5 turbines, are of the centrifugal type manufactured by AVRO's gas turbine division adjacent to the plane plant at Malton, 15 miles from Toronto. Boothroyd said the future of Jetliners looks good and I.A.M. members are looking forward to good job futures with AVRO.



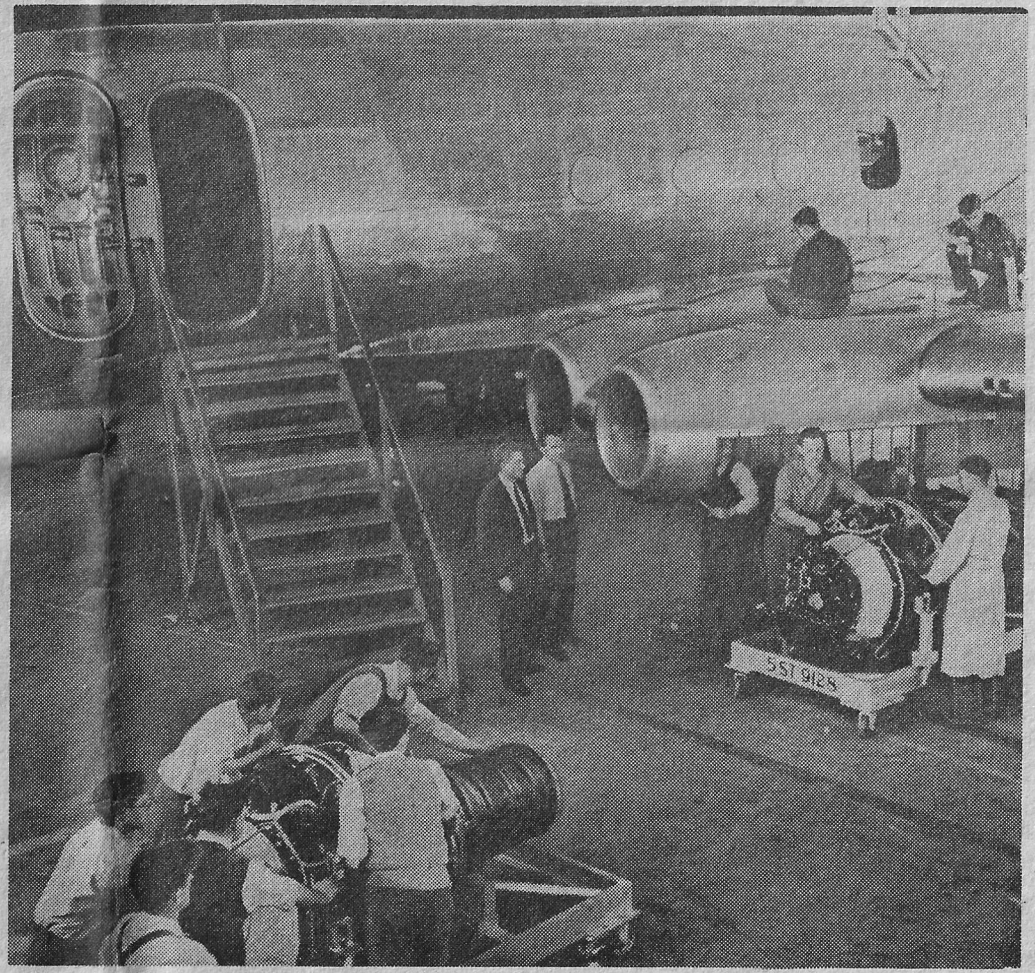
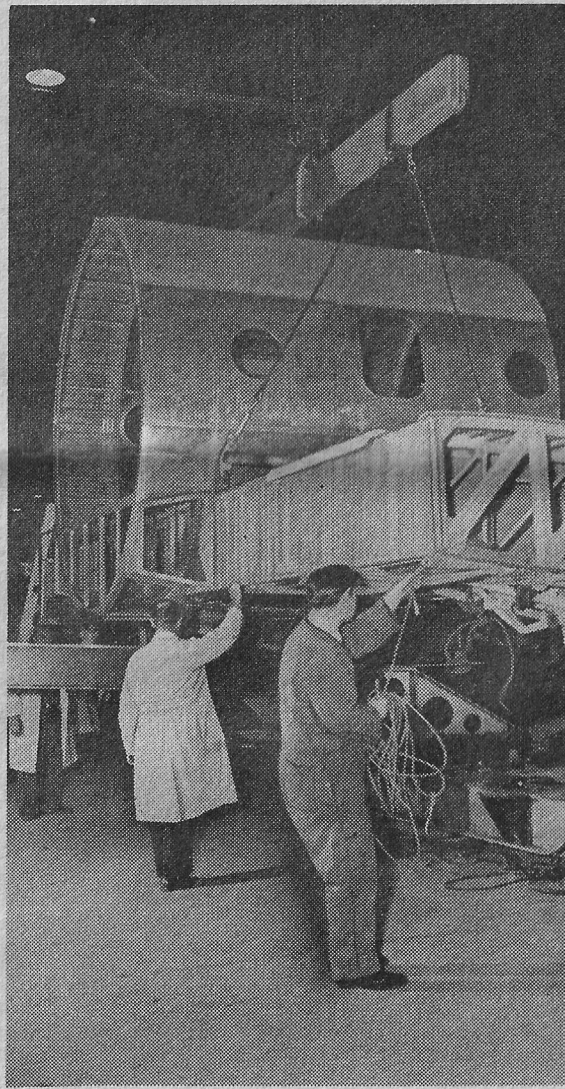
AVRO Jetliner, made by I.A.M. members at A. V. Roe Canada Ltd., Toronto, cruises at a speed of well over 400 miles an hour.



NOSE installation is handled by I.A.M. members. Glide-path antenna is fitted. Below, Jetliner is taking off on runway.



FUEL system is inspected prior to next operation. Entry to tanks is from lower wing portion along its leading edge.



JET ENGINES, above, are being wheeled into position prior to installation in the Jetliner. Parts and all operations from front door to back are handled by I.A.M. members. Left, center section of fuselage and main panel is removed from assembly jig. All assembly fixtures are held to extremely close tolerance assuring quality and interchangeability.