



Jesper Parnevik serves a putt on the 5th green

Our Sales & Distribution team promotes our products (l to r): Captain Ron Clark, Vice President, Corporate Safety and Environment; Sam Pellegrino, Manager, E-Commerce, PTO; Sarina Aluja, Personal Ticket Office Support Specialist; Brian Wild, Director of Business Development-Consolidated Travel; and Shirley Clark, Captain Clark's spouse.



J. L. Lewis examining the long putt on # 8



Sergio Garcia pumps his fist after sinking a putt on the 36th hole.



Pioneers in our midst

This summer, Jim and Irene Floyd travelled on our wings, from Toronto to Manchester, England, to celebrate their 60th wedding anniversary. They married amid danger and intrigue.

A walk through the past

In June 1940, at the height of the Battle of Britain, the Floyds were both working for the A.V. Roe Company (Avro)—Jim in the design office and Irene in the tracing department. Avro produced the famous Lancaster heavy bomber, which was instrumental in the allies' World War II victory.

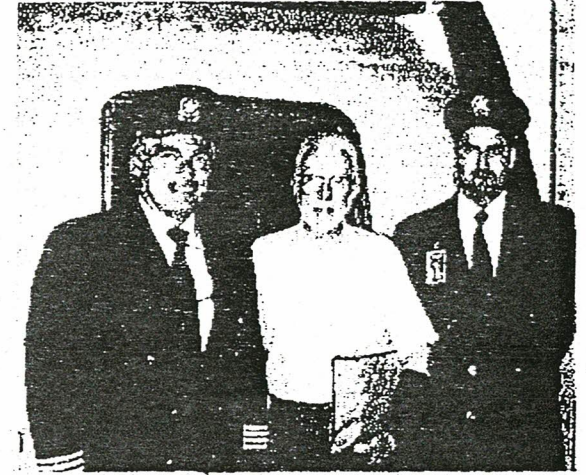
Floyd had his hand in designing a number of groundbreaking aircraft, including the Avro Canada Jetliner—the world's second, and North America's first—jet transport, and the legendary Avro Arrow supersonic interceptor. Fifty years ago, the Jetliner was flying twice as fast and twice as high as propeller-driven airliners. Although it didn't go into production, it did set the standard for modern-day air travel. In

case you'd ever wondered, Jetliner Drive, at the entrance of Toronto's Terminal 2, is named in its honour.

One of aviation's unsung heroes

A Canadian Aviation Hall of Fame inductee, Jim Floyd was the first non-American to be awarded the Wright Brothers' medal. He received that honour in recognition of his pioneering work on the Jetliner.

Talk about vision. Forty years ago, Floyd and his colleagues at Avro were already working on ideas for space shuttles and supersonic transport. During the 1960s, he played a major role in the development of the Concorde. Neil Armstrong, the first man on the moon, recently described Floyd as "an engineer's engineer."



(l to r) Captain Gerry Lapensée; Jim Floyd; and First Officer Mike Landry.

A kind man, the soft-spoken Floyd demonstrated a tremendous capacity to lead and teach during his long aviation career. He helped change the way we travel. He saw things as they could be, pushing the limits by asking himself and others "why not?"

Special thanks to William Mellberg.