

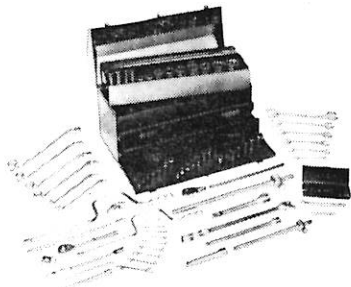
**PERFECTLY
BALANCED...**

trim and strong

Designed for the modern mechanic—light in weight—streamlined in design.

Every wrench is made from tough Chrome—Vanadium Steel—highly polished for easy handling.

Openings from 3/16" to 1 1/2"
Lengths from 2 3/4" to 15 1/2".



SW-60 Master 1/2" drive set. The finest basic wrench set made especially for Canada's master mechanics. This set has every combination of handles and adapters, extensions and sockets in the 1/2" Drive Range

Preferred by Skilled Mechanics
Sold and serviced by leading automotive
jobbers from coast to coast



**GRAY
BONNEY
TOOLS**

people



Newly appointed manager, marketing services, of the electronics division of Canadian Westinghouse Co., Ltd., Hamilton, Ont., is **F. Robert Aitken** (above). He has been in company's sales department since 1953. **K. J. Farthing** has been appointed general advertising manager for the company.

Lear, Inc., Grand Rapids, Mich., announces the appointment of **Clare E. Barkalow** as associate manager of the advanced engineering division.

Relinquishing managership of Atlas Titanium Ltd., Welland, Ont., **D. H. Munroe** becomes assistant comptroller Atlas Steel Ltd., the parent firm. He is succeeded by **T. Howard Adair**. **Dr. Robert Clark** succeeds Mr. Adair as chief plant metallurgist of Atlas Steels.

Immediate Delivery

We stock, overhaul and install

PRATT & WHITNEY	WRIGHT
R1830	R1820
-75, -92, -94	-202, -56, -72

R985 R1340 R2000

and our most popular DC3 engine
R1830 - SUPER - 92

ENGINE WORKS
Inc. Lambert Field St. Louis, Mo.

NAVCO, INC. Lambert Field St. Louis, Mo. PErshing 1-1710

has in stock

A.B.C. Bendix Collins
Sperry Wilcox

Executive Aircraft Radio

Remmert-Werner

Inc. of St. Louis	Inc. of Florida	Inc. of Toledo
Lambert Field	Pompano Beach	Express Airport
Lodestar	DC3	Beech

Specialists in Conversion, Maintenance, Overhaul

Following reorganization of the manufacturing division of Canadair Ltd., Montreal, **T. V. Chandler** is appointed manufacturing administration director. **Robert J. Higman** is now special weapons manufacturing director; **H. J. McKeown** is appointed quality control director; and **G. N. Arnison** is quality control superintendent—missiles. **Charles A. Ulsh** becomes aircraft manufacturing director and is succeeded by **R. S. Campbell** as aircraft factory manager. **Frank W. King** is made long range planning and operations research manager; **Donald D. Dogherty** is now master scheduling manager; **Donald Dixon**, formerly assistant general superintendent assumes title of aircraft manufacturing engineering manager; and **H. E. Egbert** is appointed special weapons manufacturing engineering manager. **R. C. McCutcheon** succeeds Mr. Egbert as plant engineer.

Douglas G. Gallop is appointed a technical representative of the Bakelite Company, Division of Union Carbide Canada Ltd., Toronto. He is a B.A.Sc. graduate of Toronto University.

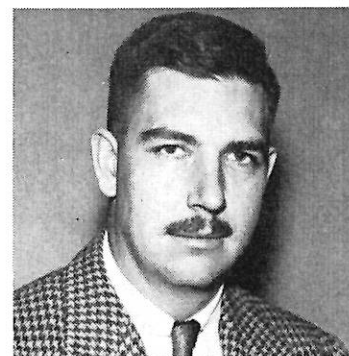
Appointed Washington D.C. district manager of Walter Kidde and Co. Inc.'s Aviation Division, is **Gordon J. Schanck**. He is transferred from the Dallas office.

Newly appointed contracts officer — navigation, of Computing Devices of Canada Ltd., Ottawa, is **Lt.-Cmdr. A. J. McCulloch**, retired Royal Navy officer.

James B. Carter is appointed chairman of the board of directors of James B. Carter Ltd., Winnipeg. He is succeeded as president by **Daniel Sprague**.

Newly appointed public relations manager of Orenda Engines Ltd., Malton, Ont., is **Lorne Frame**.

Elected vice-president of the Lockheed Aircraft Corp., Burbank, Calif., in charge of public relations, is **John E. Canaday**. Newly appointed domestic sales manager of the firm's California division is **Frank F. Davis**.



Formerly executive assistant to the Fraser River Board in Victoria, B.C., **R. L. Walker** (above) has joined Hunting Technical and Exploration Services Ltd., Toronto. He is a graduate of the University of British Columbia, B.A.Sc., P.Eng.