

AVRO Canuck

Copy of a Photo Album
Courtesy of AVRO Test Pilot Peter Cope

Arrow 2000 Collection
A.V. Roe Canada Heritage Museum
Calgary, Alberta



THIS SEQUENCE OF 4
SHOTS COVERS A LOOP.
I THINK I WAS FLYING
FB S AND JAN WAS
FLYING THE PHOTO
AIRPLANE WITH HUGH
MCKECHNIE TAKING
THE PICTURES











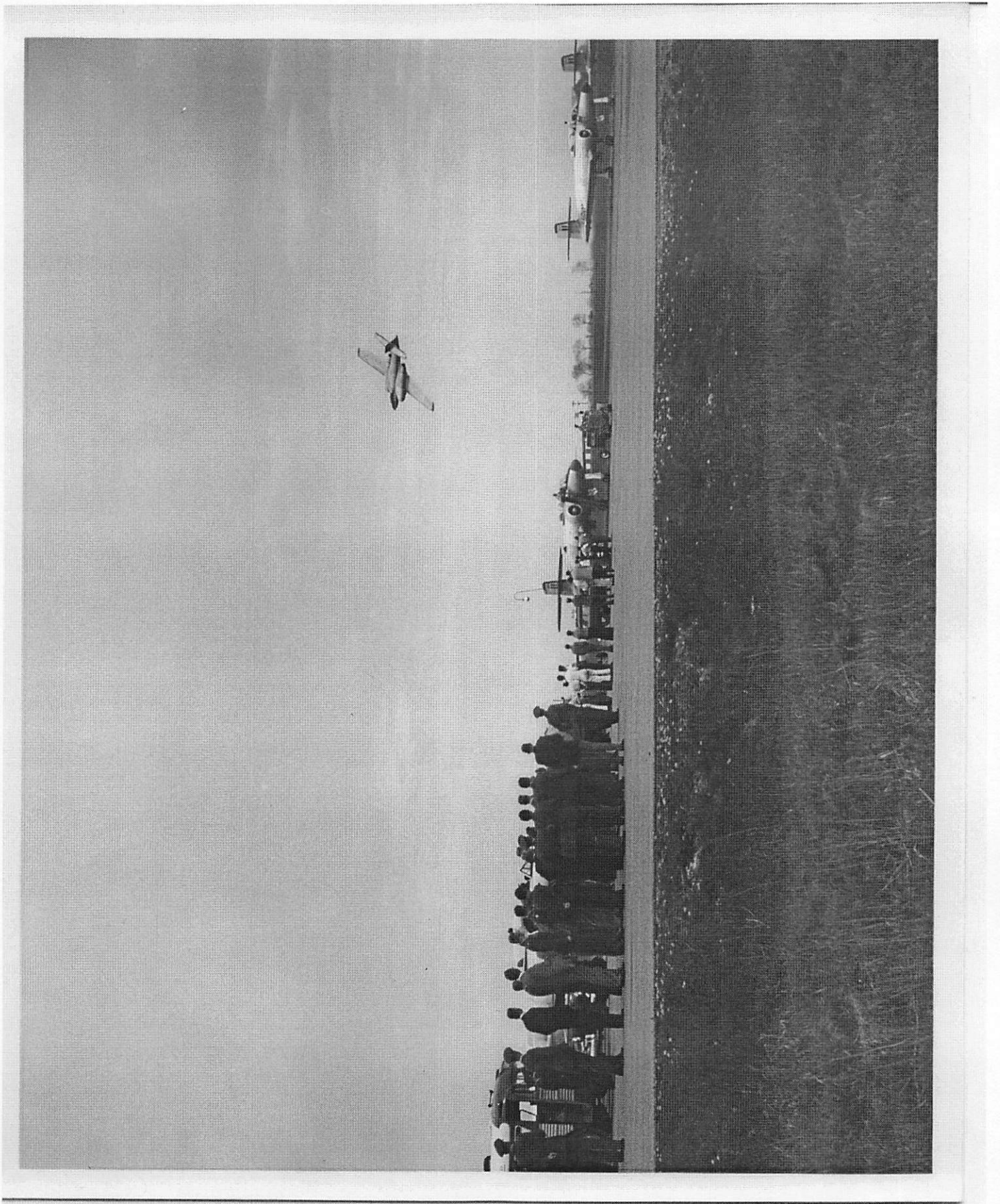


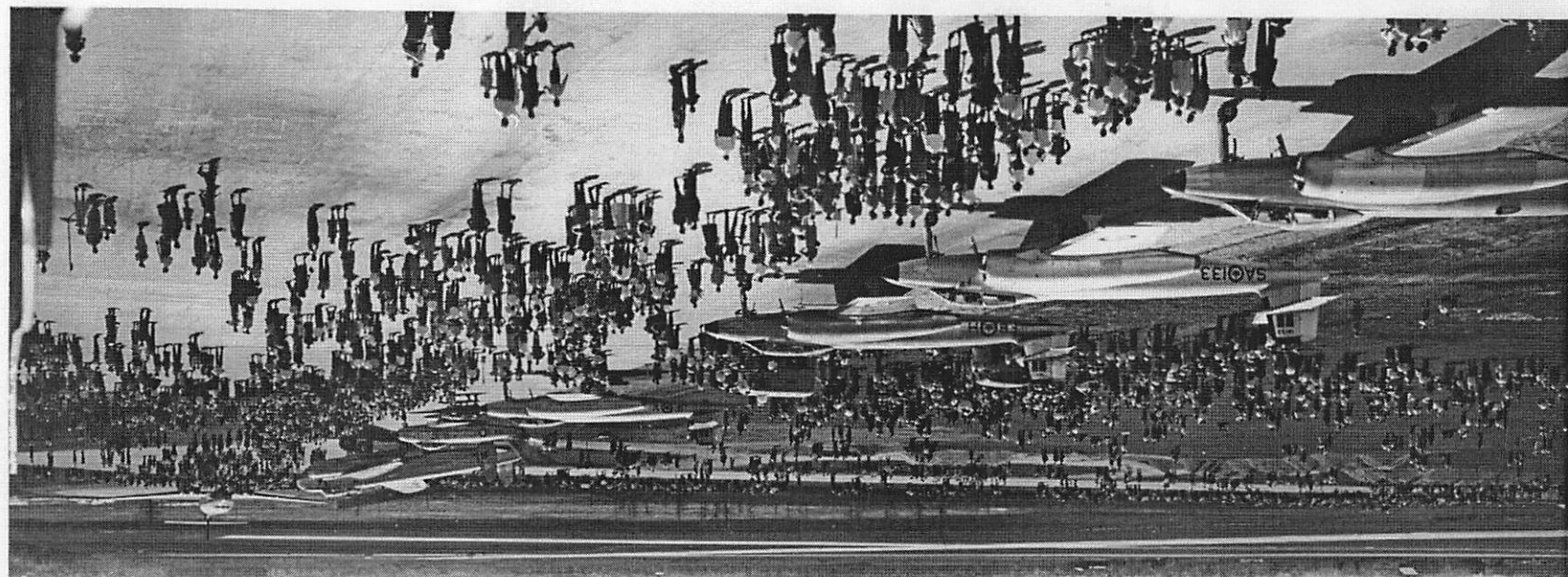


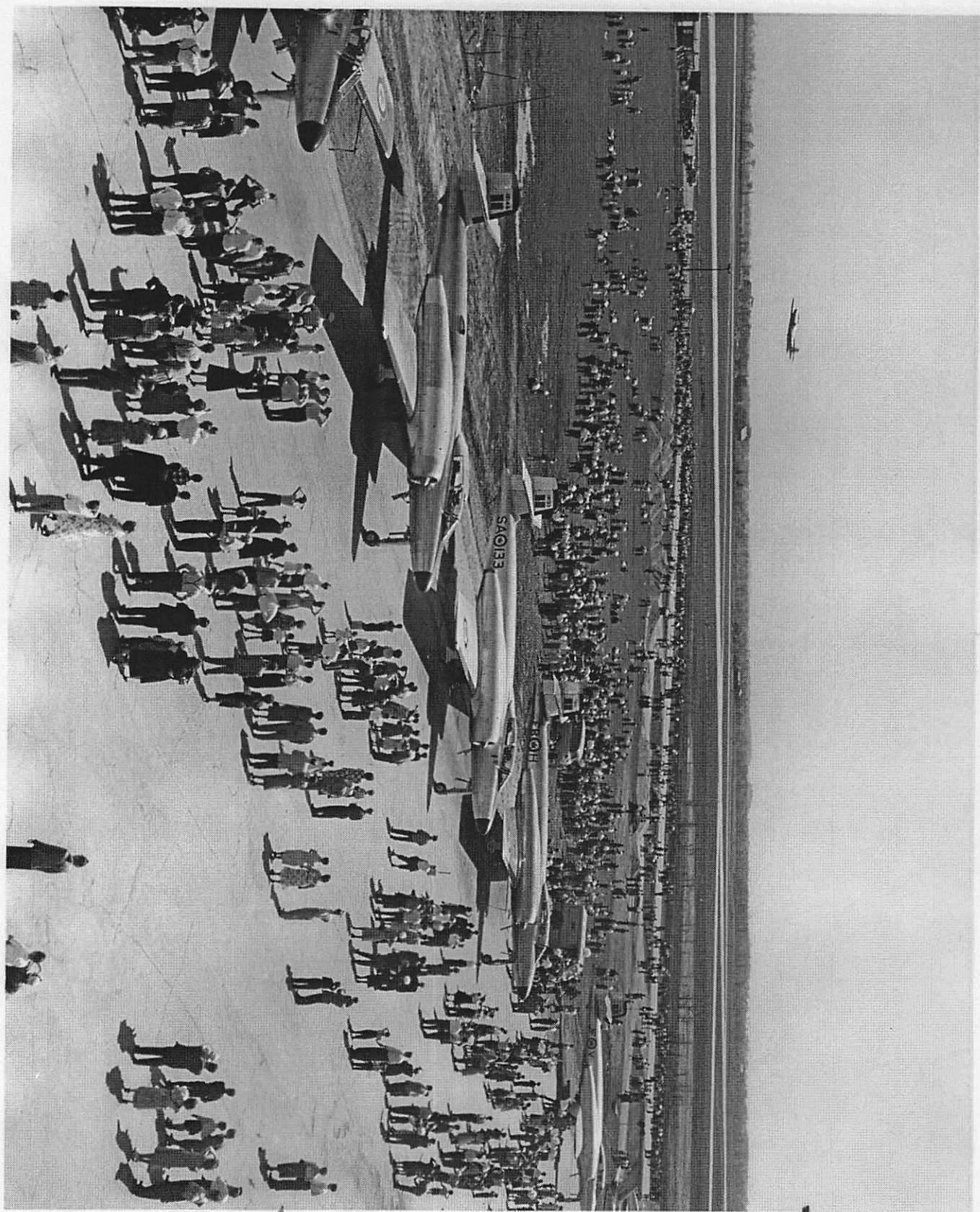






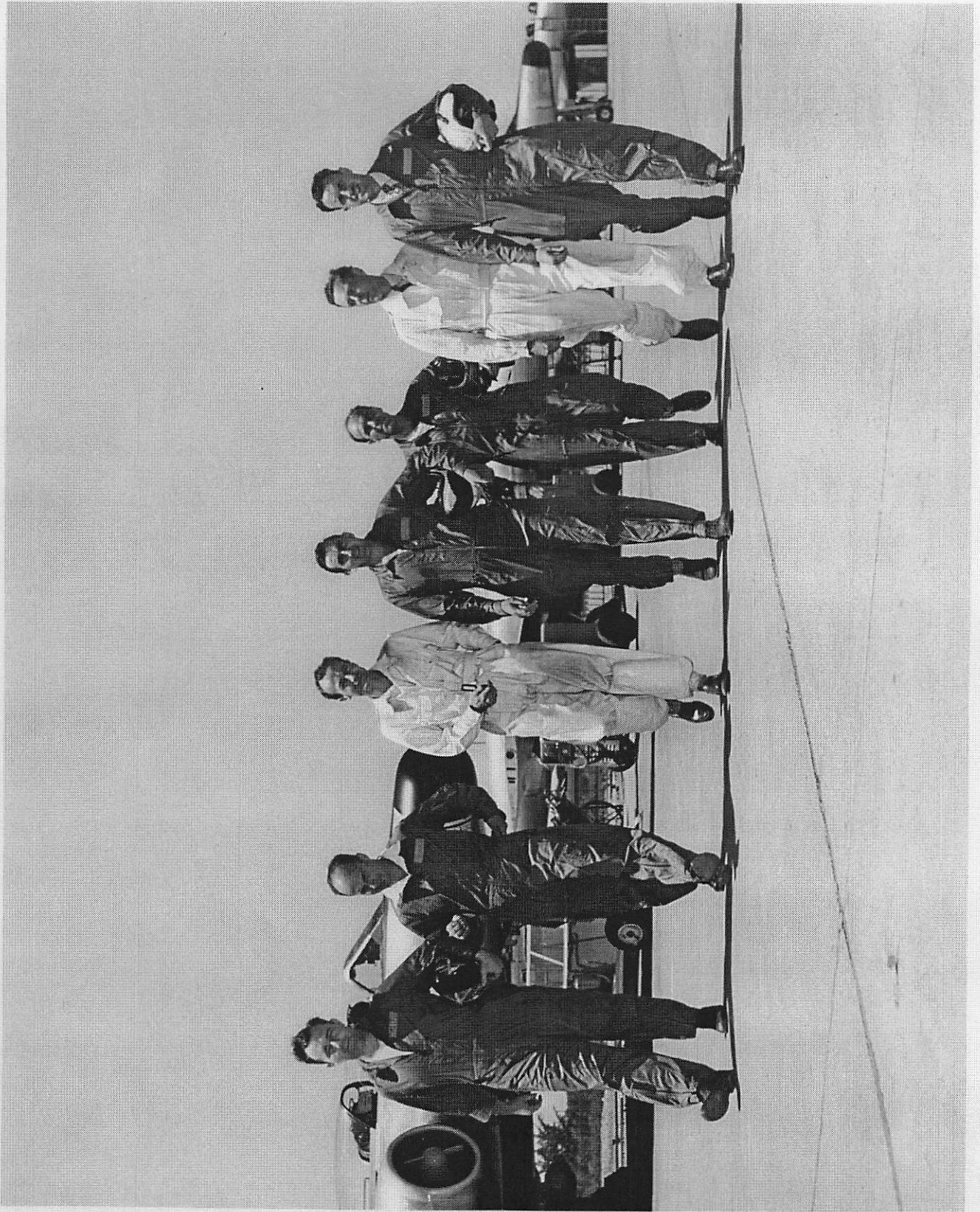




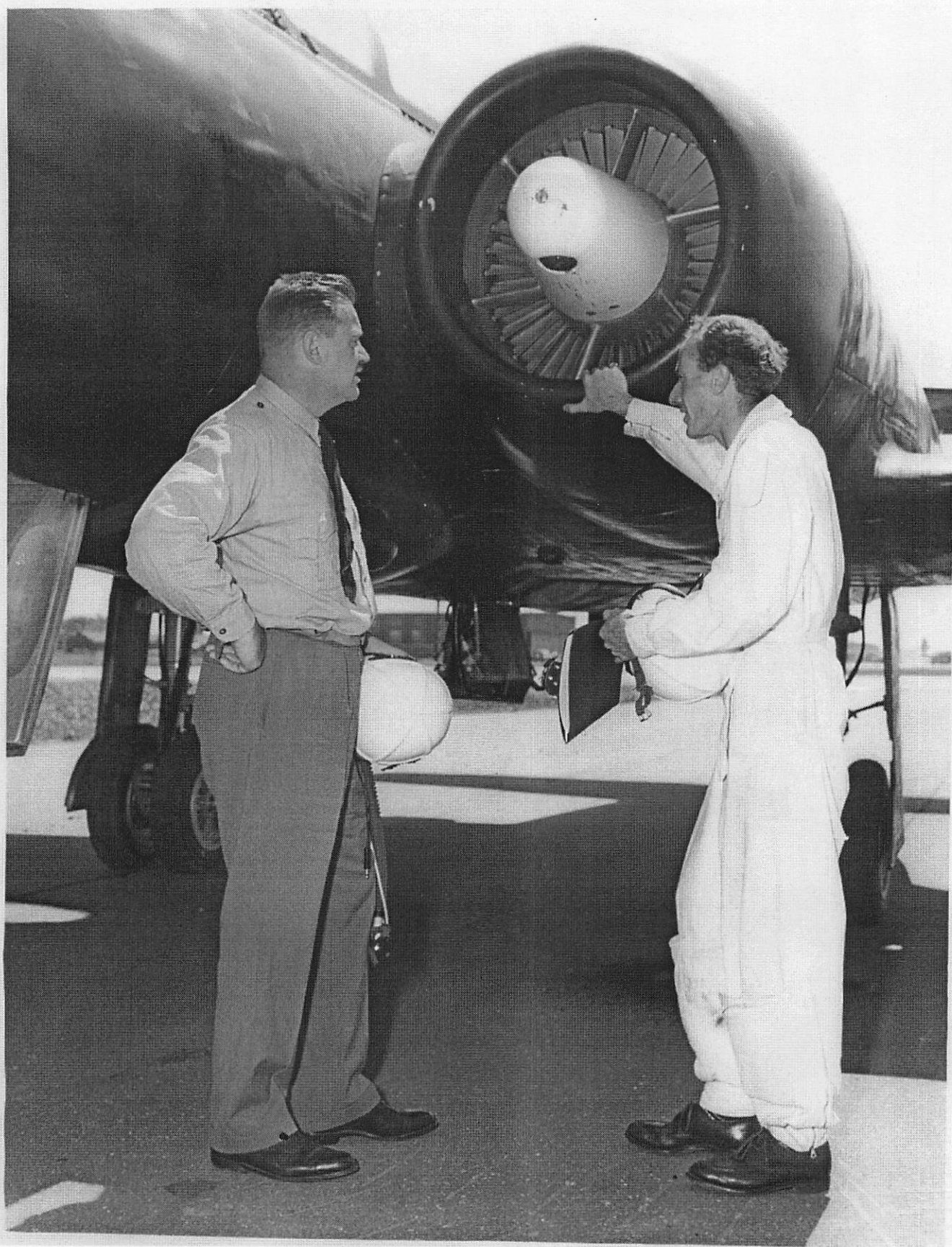












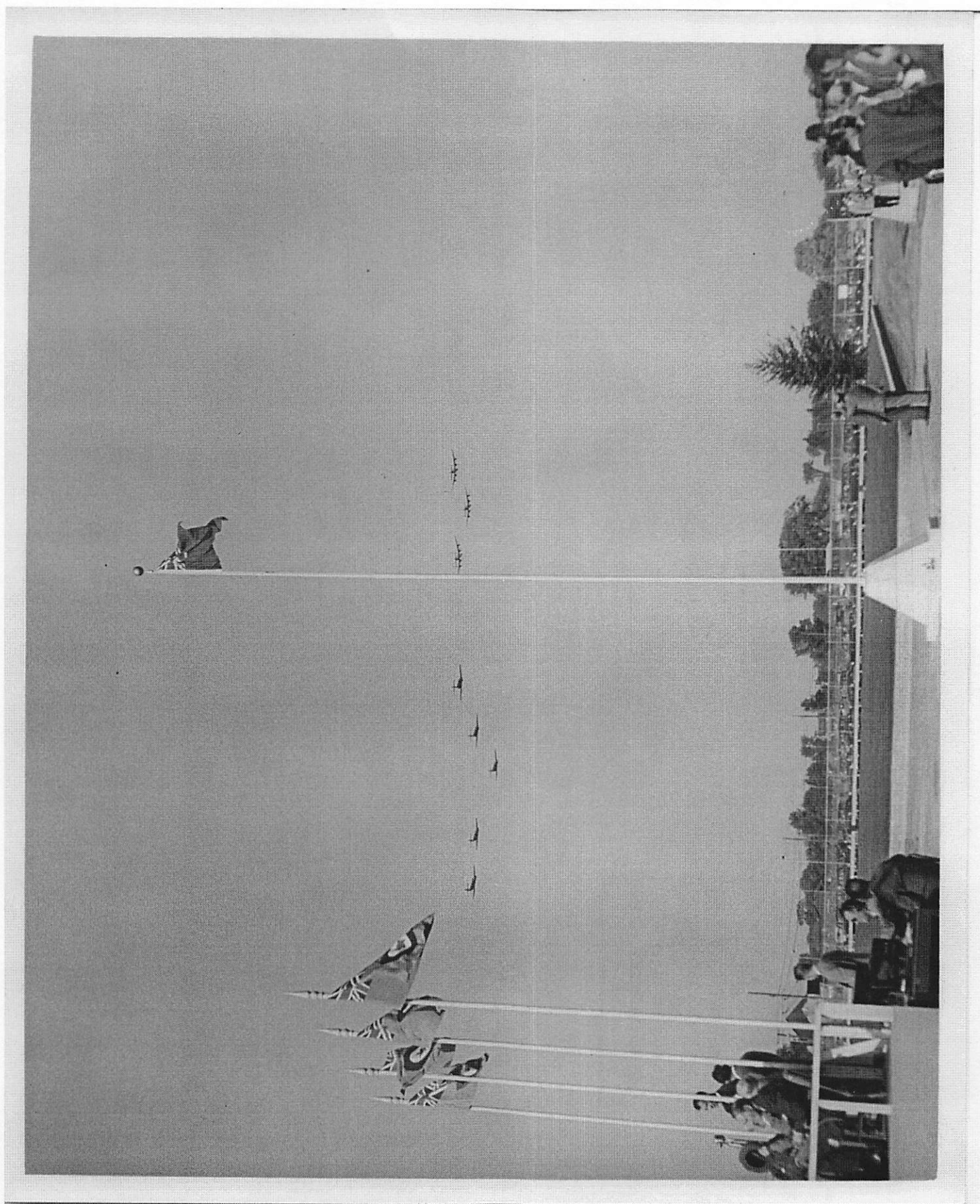


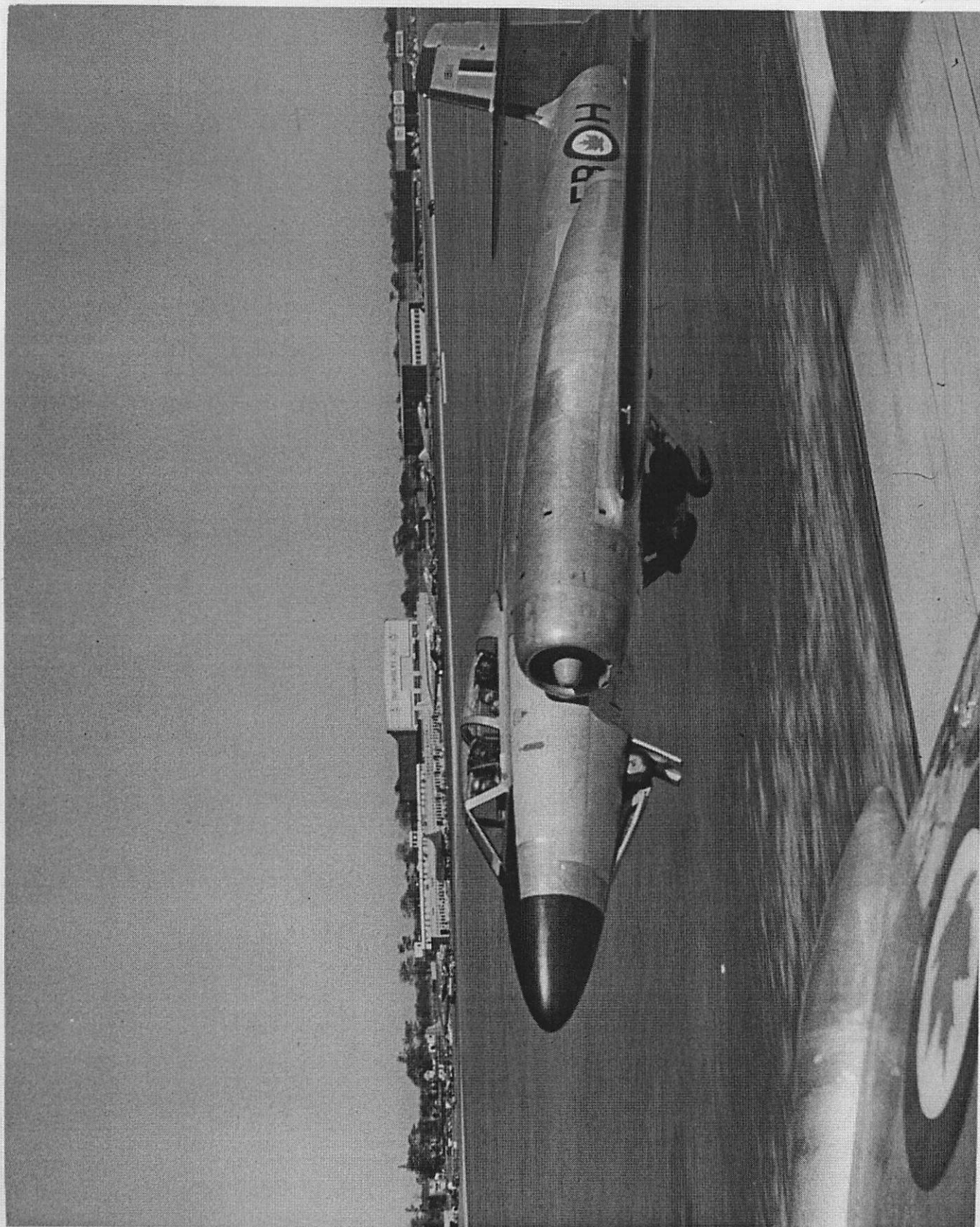


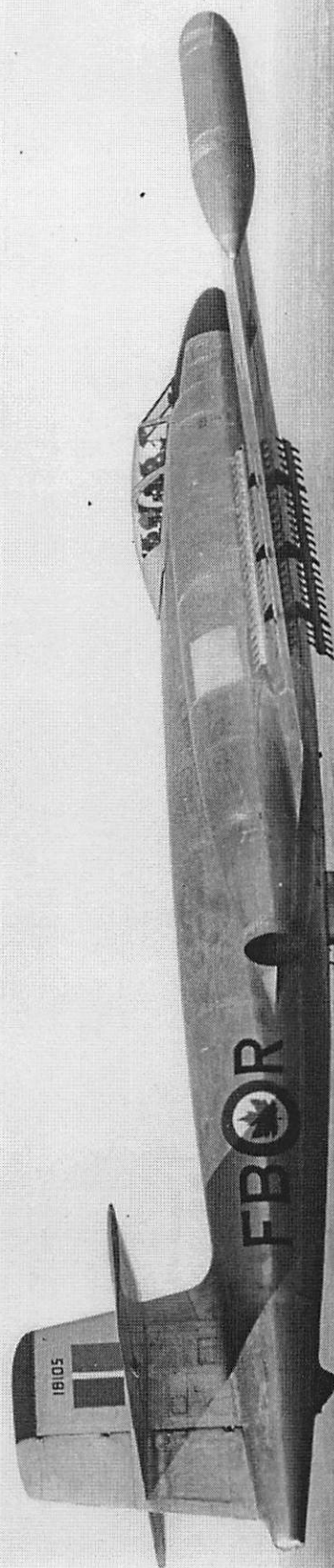




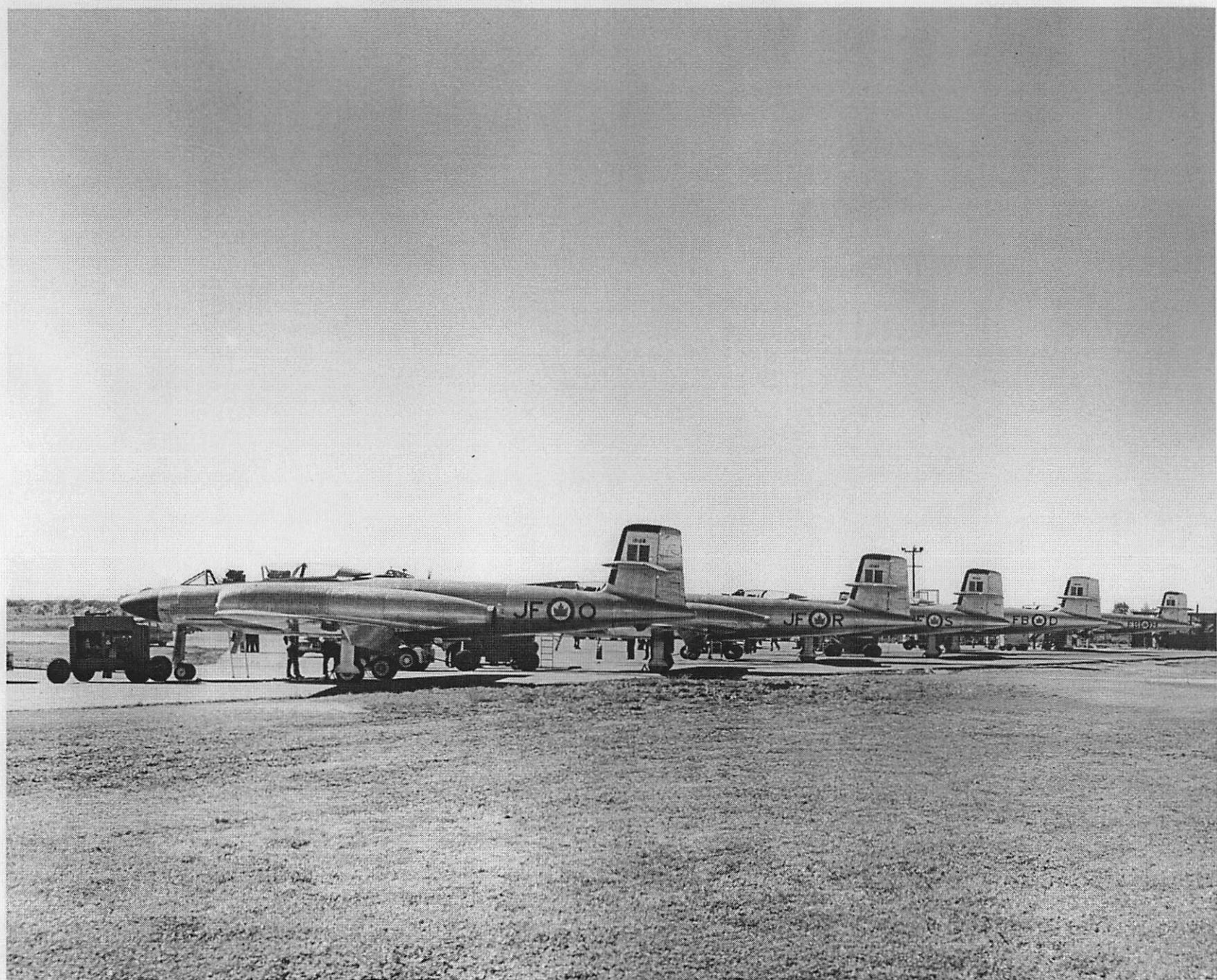




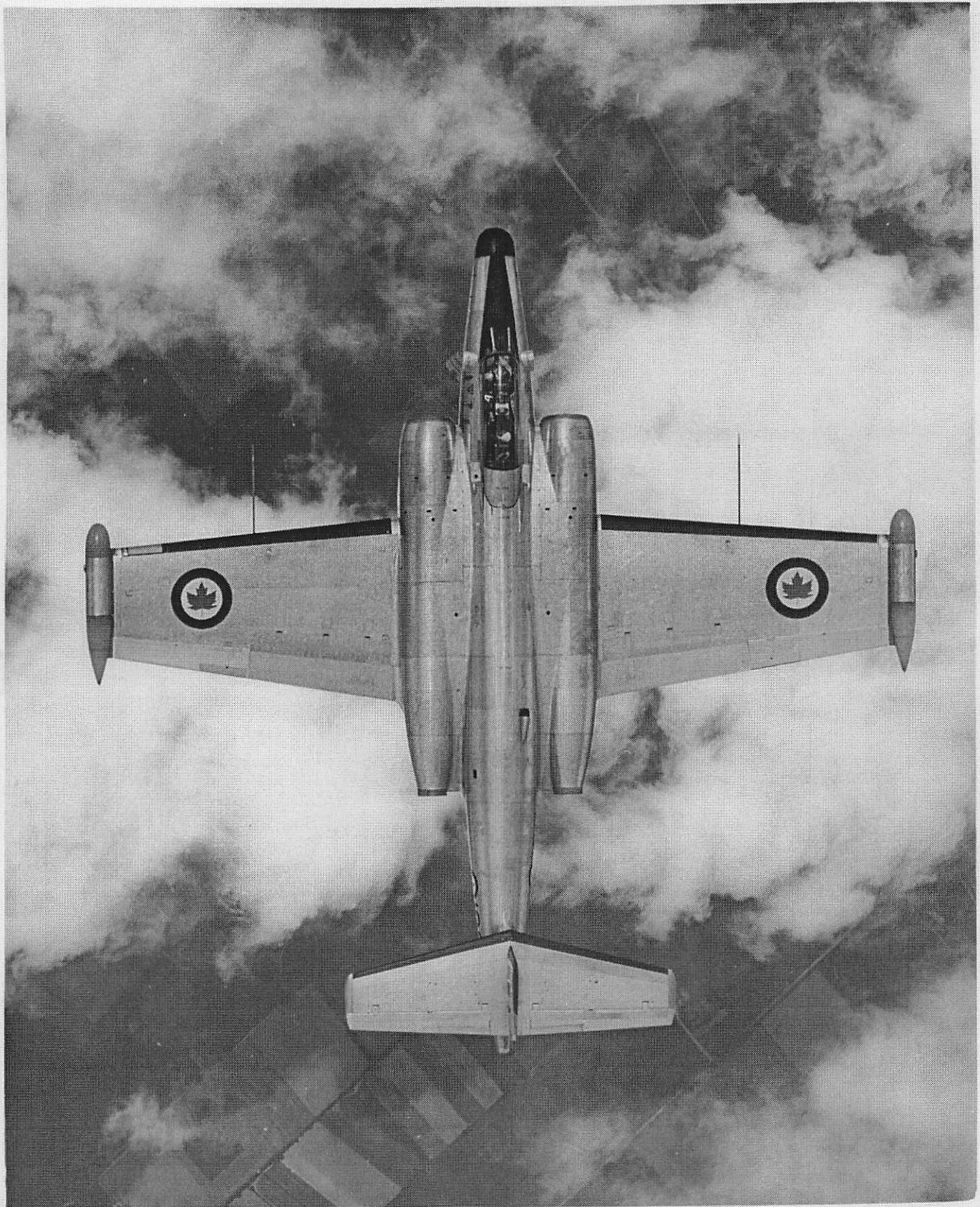


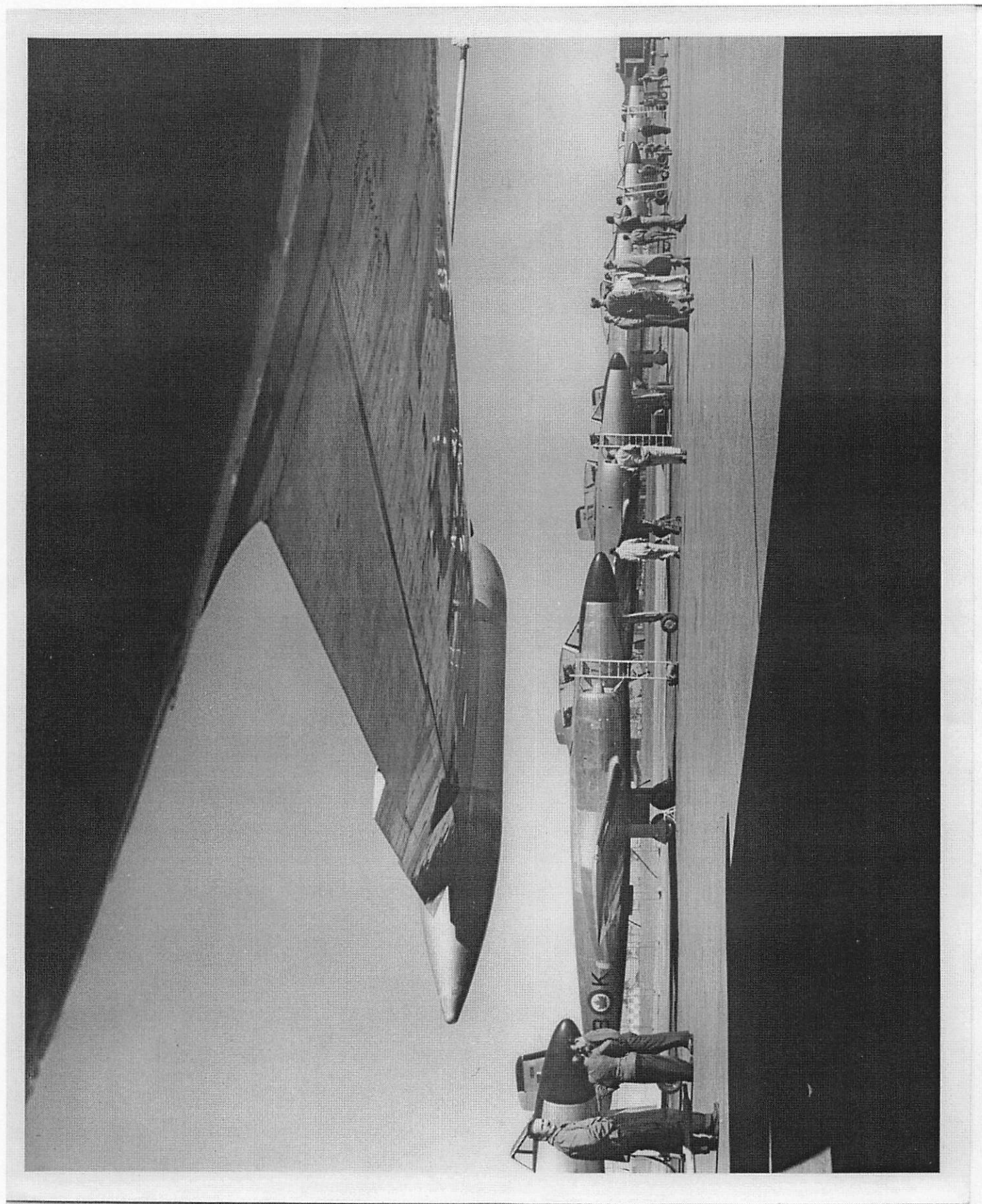






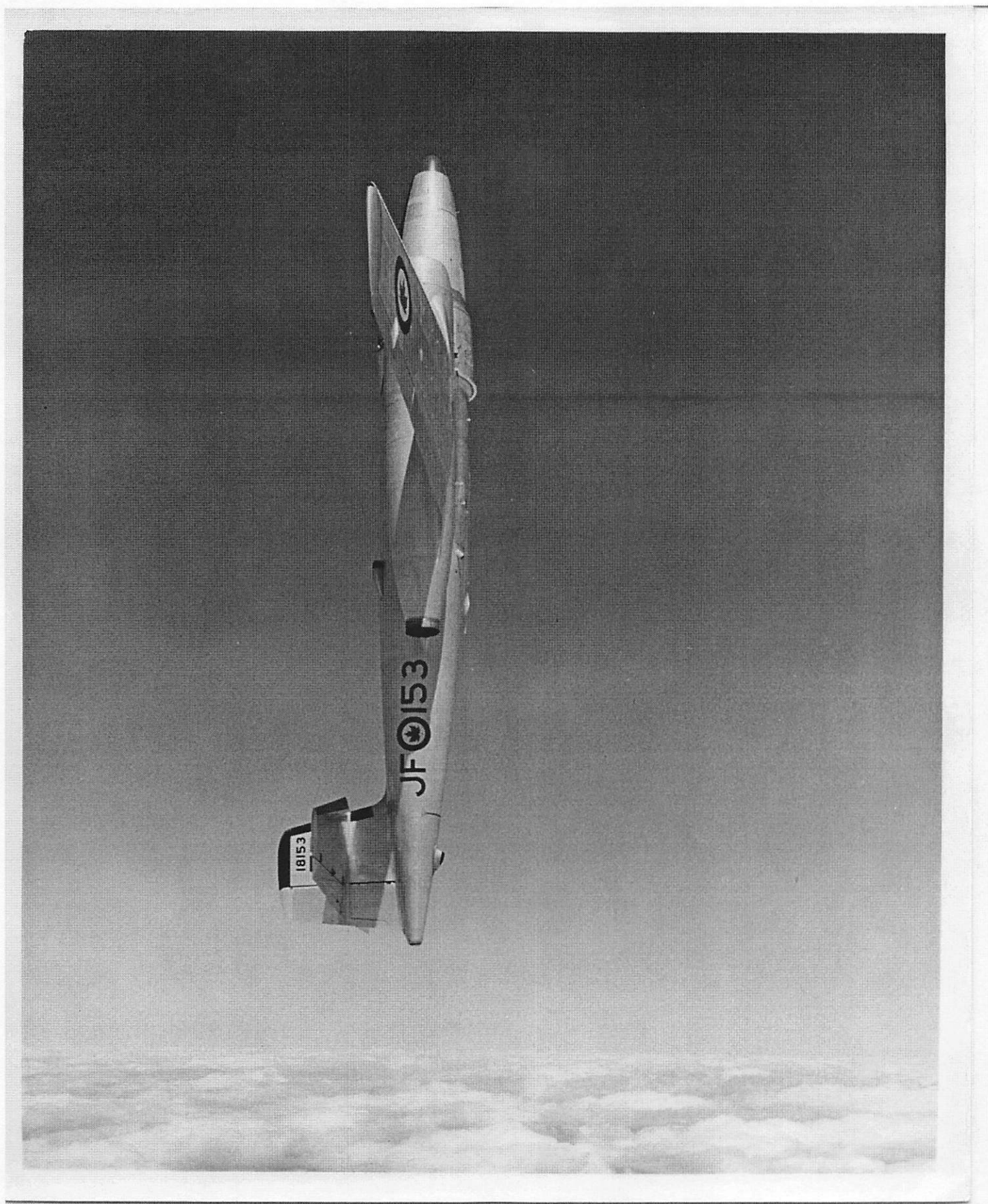
















AVRO AIRCRAFT LIMITED

OFFICE OF THE
VICE-PRESIDENT AND GENERAL MANAGER

305-2004
TERMINAL 3
TORONTO, ONT.

May 10, 1956.

PERSONAL.

Mr. Peter Cope,
73 Kingsway Cres.,
Toronto, Ontario.

Dear Peter:

I understand that, recently, you chalked up 1,000 hours of test flying in CF.100 aircraft.

I did not wish to let this occasion go by without a word of congratulations and thanks. In this flying you have contributed substantially to the development of the aircraft, and particularly to the development of its armament systems.

Again, many thanks, and all my best wishes for your continued success.

Sincerely yours,

FRED T. SMYE.

M.

Avro NEWS

PUBLISHED BY AVRO AIRCRAFT LIMITED, MALTON, ONTARIO

MAY 11, 1956



WARM HANDSHAKES of congratulation awaited Test Pilot Peter Cope when he climbed down from a Mark 5 CF-100 last week after a rocket firing test flight. This trip logged his 1,000th hour of test flying in various marks of production and experimental CF-100s. Ground crew members are (from left): Roy Cussans, Jim Shaw, Art Death, Jim Canning and Bill West, all of Experimental Flight Test departments.



LEN HOBBS
BRENDA
PILOT

BILL DEVINE
COMPANY
EXEC A/C
PILOT
DC3 & DOW

STAN HASWELL
PRODUCTION

JACK WOODMAN
RCAP

CHRIS PIKE
PRODUCTION

MIKE COOPER-SLIPPE
BRENDA
CTP



FRONT ROW L-R.

LORNE
URSEL
PRODUCTION
A/C

CANT
REMEMBER
HIS NAME
FLT ENG
A/C PILOT
FOR
EXEC A/C.

JAN
ZUMWOSKI

DON
CTP
RODGERS

SPUD
POTOCKI

PETER
COPE





400 DP1









