

## people



**Earl Redfern** is appointed production manager of Orenda Engines Ltd., Malton, Ont. He was formerly repair and overhaul superintendent.

Promotion of **Patrick McTaggart-Cowan**, former assistant director of the meteorological branch of the Department of Transport, to the position of Associate Director, is announced.

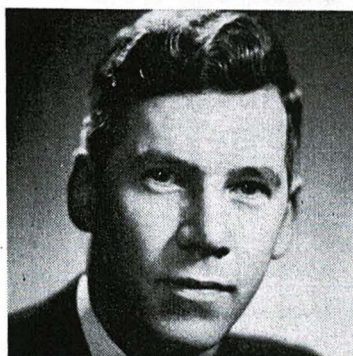
Recently retired was **Kenneth Foster Saunders**, aviation pioneer in Canada, who held the post of Regional Superintendent of Air Regulations of the DOT at Edmonton, Alta.

Appointment of **Charles D. Davidson** as installation liaison engineer of Rolls-Royce of Canada Ltd., is announced. Position has been created as a result of the expansion of commitments for the installation of turbojet and turboprop engines in North America.

New additions to the board of Aircraft Radio Corp., Boonton, N.J., are **Nils Sundstrom** and **Brig. Gen. Tom C. Rivers** (USAF Ret.).

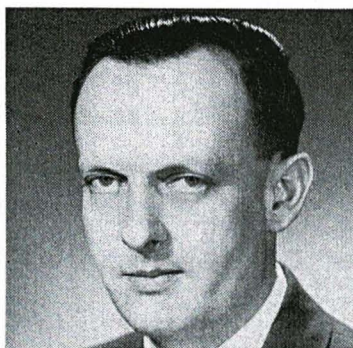
Newly appointed manager of the service engineering for the aero division of Honeywell Controls Ltd., Toronto, is **Otto M. Cepella**.

**W. H. Riggs** (above) has been appointed Vice-President, Manufacturing, of Avro Aircraft Ltd., Malton. Mr. Riggs was Production Shops Manager during peak production of the CF-100 and development of the supersonic CF-105 Arrow. Recently, as Works Manager, he has been responsible for continuing and new production activities at Avro.



Election of **John D. Houlding** (above) as a director of RCA Victor Co. Ltd., Montreal, is announced. He is vice-president, technical products, of the company, with direction of research, tube manufacturing, commercial and industrial electronics, as well as defense activities.

Appointment of **Harry Thomasson** as consulting engineer is announced by Canadian Westinghouse Co. Ltd., Hamilton, Ont. He was previously manager of firm's research and development laboratories.



Appointment of **W. A. Dymond** (above) as commercial manager of the Photographic Survey Corp., Toronto, is announced. He joined the company in 1946.



The Alvis Leonides Major engine powers the new Westland Whirlwind Helicopters now in service with the Royal Navy. The Leonides Major gives the Whirlwind 30% increase in rate of climb and 100% greater ceiling.

# ALVIS

LEONIDES AERO ENGINES

ALVIS LIMITED · COVENTRY · ENGLAND