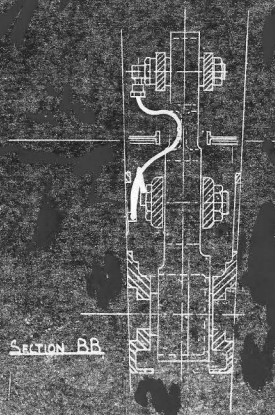
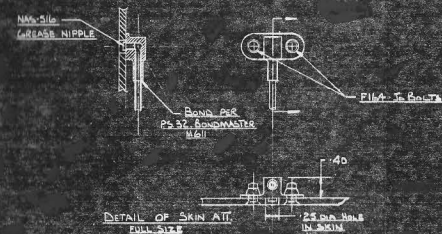
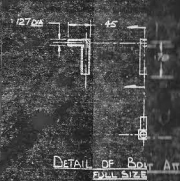



FIN 2



SECTION B.E



4. ALL SHU LUBRICATION POINTS ON THIS INVESTIGATION ARE ATTACHED TO EXISTING DETACHABLE PLUGS; THESE WOULD REQUIRE MODIFICATION.
3. IT SHOULD BE POINTED OUT, THAT AT PRESENT LUBRICATION POINTS IN THE RUDDER 'CONTROL BOX' ARE MODERATELY ACCESSABLE, WITH THE EXCEPTION OF THE POINT AT THE RUDDER JACK , WHICH NECESSITATES THE REMOVAL OF RUDDER JACK ACCESS DOOR.
2. DANGER EXISTS IN THAT THE TUBE MAY BECOME LODGED BEHIND ONE OF THE MANY HIGH-RISE PINS USED IN THE CONSTRUCTION OF 'CONTROL BOX'; ALSO AS THE CONTROLS ARE ACTUATED, THE LUBRICATION TUBE WILL IN PLACES, RUB LIGHTLY ON THE STRUCTURE.
1. THIS METHOD OF LUBRICATION IS SUBJECT TO OBTAINING 1/4 OD FLEXIBLE NYLON TUBE,

NOTES

[illegible]