

# Continental Air Power



Supreme Commander,  
NORAD:  
General Earle E. Partridge

## Early warning radar sites

WITH THE FORMATION of the North American Air Defense Command (NORAD) in September last year, Canada and the United States pledged their partnership in the defense of this continent.

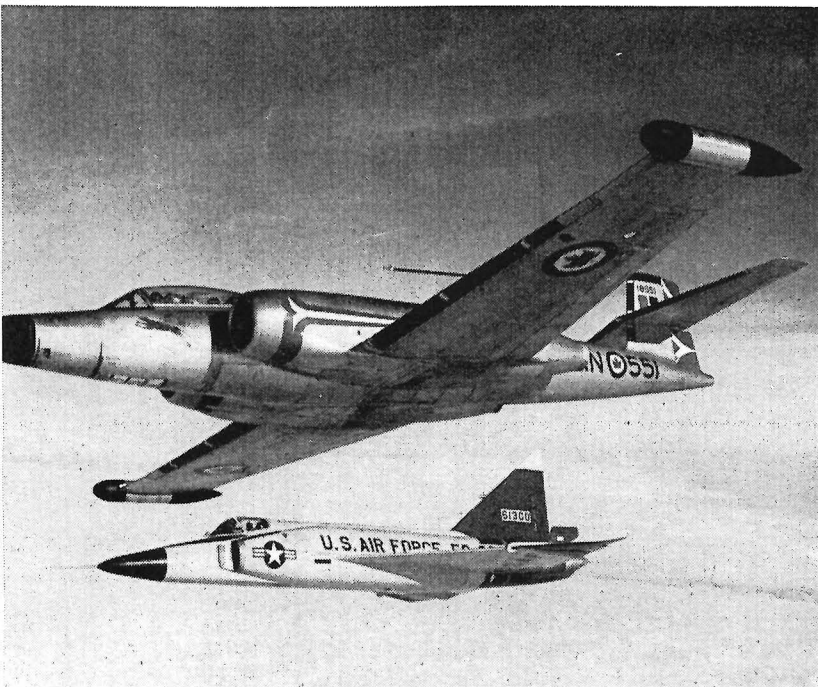
From the headquarters at Colorado Springs, control is exercised over every component of the defense system. From there the functions of detect, intercept, identify, and destroy are co-ordinated.

The girl working at the Plexiglas plotting board in the concrete combat operations centre is the vital link. She receives messages relayed from distant radar outposts, ranging from far above the Arctic Circle down to the Gulf of Mexico, and out into the Atlantic and Pacific on each flank.

The comprehensive communications system gives the commander-in-chief ability to assess the situation immediately,

*NORTH AMERICAN  
AIR DEFENSE  
COMMAND*

## Manned interceptor units



## NORTH AMERICAN AIR DEFENSE COMMAND

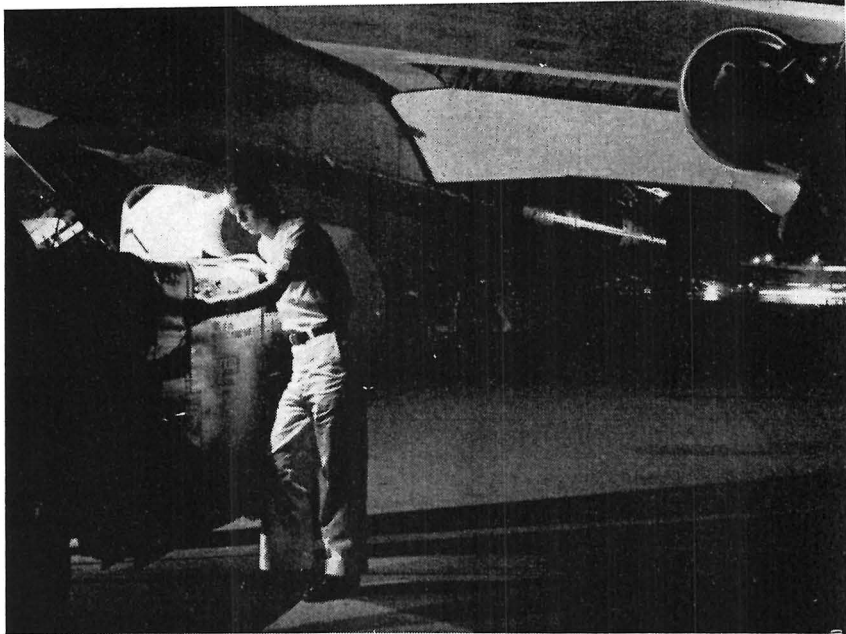


670

Co  
Op  
Ce



Deputy Commander,  
NORAD:  
Air Marshal C. R. Slemon



Strategic Air Command bases

## AMERICAN COMMAND



Combat  
Operations  
Centre

and to contact Washington and Ottawa as well as all the far flung elements of his command.

Manned interceptor planes of the USAF and the RCAF and ground to air missiles stand ready, and the men of Strategic Air Command are alert.

An important step-forward in continental defense in 1957 was the addition of nuclear air-to-air rockets to the armament of the Command's interceptors. These are capable of destroying whole formations of bombers when touched off by a proximity fuse.

In 1958, the Semi-Automatic Ground Environment (SAGE) system is scheduled for installation at the direction centres of NORAD. This automatically sifts the continent's air traffic—identifies friendly aircraft by electronic comparison with submitted flight plans—and speeds interception of unidentified aircraft.

## Missile defense sites

